



ADITYA GLASS LINE



"PATENTED GLASS COATING TECHNOLOGY"

'ADITYA GLASS LINE' is a Anand (India) based Glass Line Company that masters in the field of Glass Lined Spares, Accessories, Pipe Fittings, Lab reactors and Re-glass lining of Spares Since 2015. We are committed to give best manufacturing quality at most competitive price. We design glass line items as per standards as well as customise design and specifications on enamelled quality Mild steel, stainless steel, forging or casting materials.

Our U.S.P. is Unique **"PATENTED GLASS COATING TECHNOLOGY"** world wide.

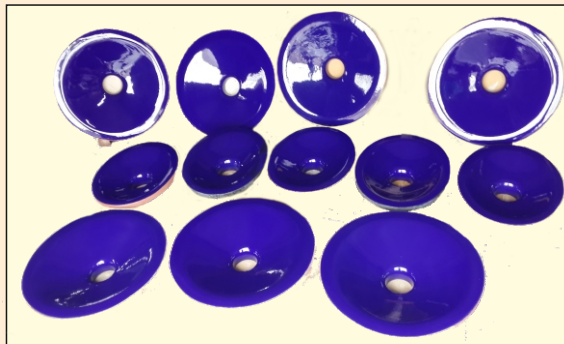
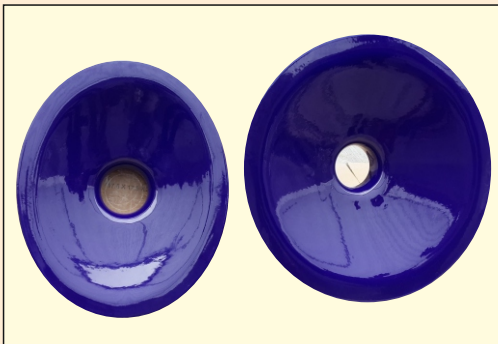
Wide range of glass lined products are manufactured for Evaporation, Distillation, Extraction, Halogenations (Chlorination, Bromination), Nitration, Condensation, Sulphonation, Oxidation, Reduction, Ammonolysis, Diazotation, Esterification, Hydrolysis, Alkylation, Acetylation, Methylation, Grignard reaction, Friedel-crafts reactions, Polymerization, Crystallization, Cryogenic reaction, Pressure reaction, Suspension, Dispersion, Transport of liquids to gases, and for many other corrosive reactions for **Chemicals industries, Pharmaceuticals industries, Polymers industries, Agriculture industries, Dye industries and Food industries.**

We are undertaking ;

- Re-Glass Lining Process for Spares, Agitators, Baffles, Lab Pan & Top Dish.
- Glass Lined Repairing Services as per customer demand &
- Inspection Services (Spark test, Thickness) for Glass lined Pressure Vessel

GLASS LINED COVERS :

MAN HOLE COVER :



HAND HOLE COVER :



CENTER OPENING COVER :

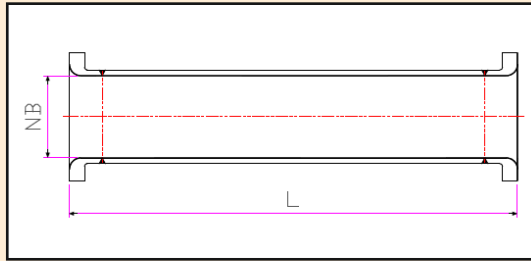
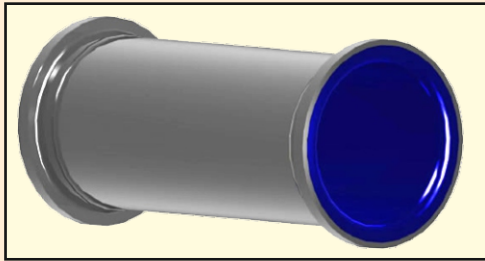


PROTECTION RING :



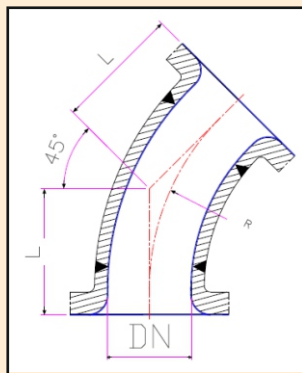
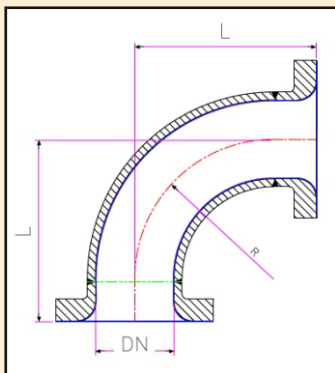
GLASS LINED FITTINGS :

PIPE :



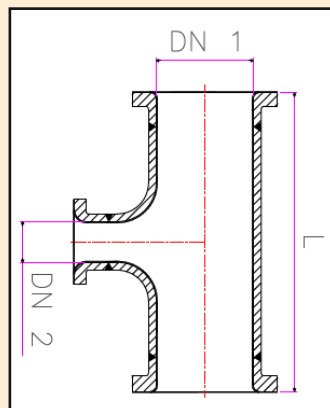
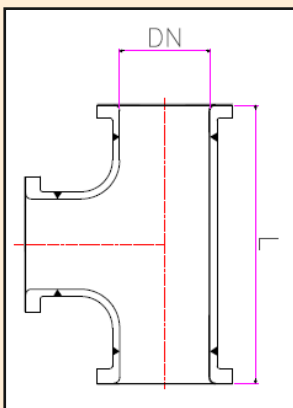
Nominal	mm	25	40	50	80	100	125	150	200	250	300	350	400	450	500	600	700
Diameter = DN	Inch	1"	1 1/2"	2"	3"	4"	5"	6"	8"	10"	12"	14"	16"	18"	80"	24"	28"
LENGTH (L)	mm	300	300	500	800	1000	1000	1000	1400	1400	1400	1400	1400	1400	1400	1400	1400

ELBOW :



Nominal	mm	25	40	50	80	100	125	150	200	300	350	400	450	500	600	700
Diameter = DN	inch	1"	1 1/2"	2"	3"	4"	5"	6"	8"	12"	14"	16"	18"	80"	24"	28"
90		90	105	115	135	155	175	195	260	315	360	400	505	555	1000	1100
45	mm	60	70	80	95	105	125	150	180	250	400	450	505	555	1000	1100

TEE :



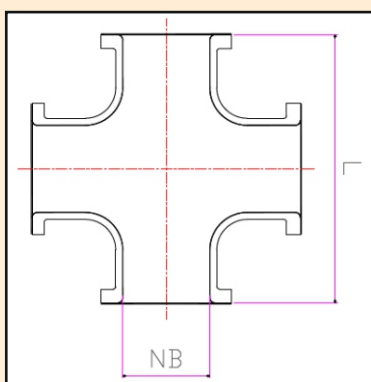
EQUEL TEE :

Nominal	mm	25	40	50	80	100	125	150	200	250	300	350	400	450	500	600	700
Diameter = DN	Inch	1"	1 1/2"	2"	3"	4"	5"	6"	8"	10"	12"	14"	16"	18"	80"	24"	28"
LENGTH (L)	mm	180	210	230	270	310	350	390	520	630	700	800	900	800	1000	1100	1200

REDUCING TEE :

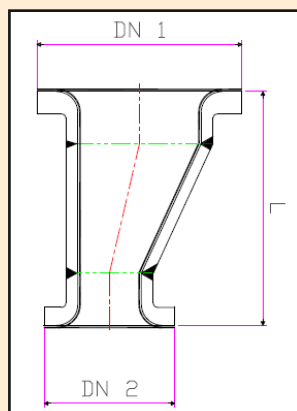
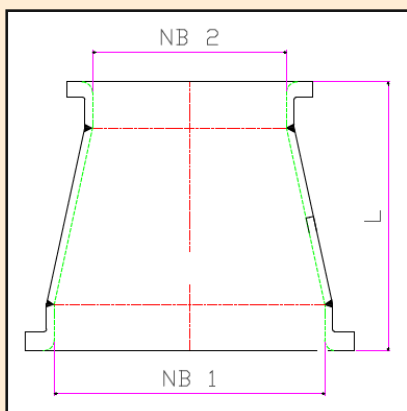
DN 1	DN 2	25	40	50	80	100	125	150	200	250	300	350	400	450	500	600
40	L	210														
	L1	95														
50	L		230													
	L1	100	110													
80	L		270													
	L1	115	125	130												
100	L			310												
	L1	125	135	140	150											
125	L			350												
	L1	140	150	155	165	170										
150	L				390											
	L1	155	165	170	180	185	190									
200	L				520											
	L1	185	195	200	210	215	220	225								
250	L					630										
	L1	230	240	245	255	260	265	270	275							
300	L					700										
	L1	290	300	305	315	320	325	330	335	340						
350	L							800								
	L1							355	360	365	370					
400	L								900							
	L1							365	375	380	385	390				
450	L									800						
	L1							375	380	385	390	395				
500	L										1000					
	L1							470	475	480	485	490	495			
600	L											1100				
	L1										525	530	535	540	545	
700	L												1200			
	L1										570	575	580	585	590	595

CROSS :



Nominal	mm	25	40	50	80	100	125	150	200	250	300	350	400	450	500	600	700
Diameter = DN	Inch	1"	1 1/2"	2"	3"	4"	5"	6"	8"	10"	12"	14"	16"	18"	24"	28"	
LENGTH (L)	mm	180	210	230	270	310	350	390	520	630	700	800	900	800	1000	1100	1200

REDUCER :

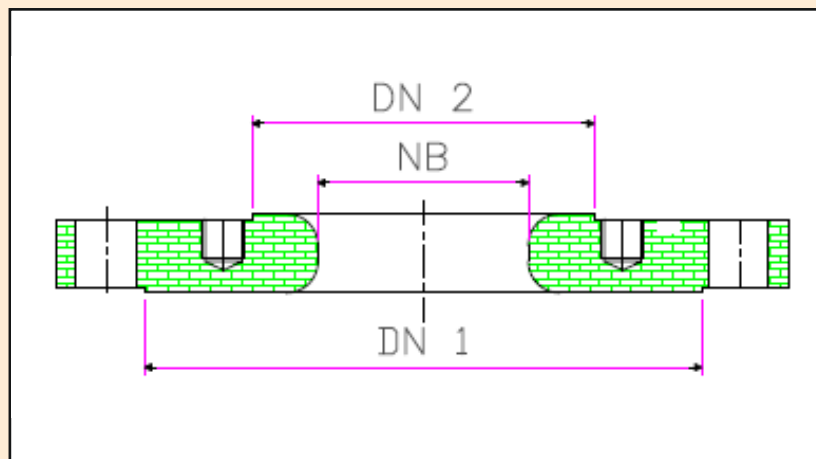
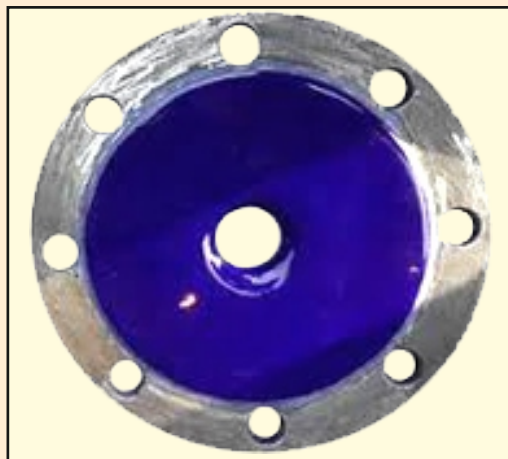


REDUCER : CONCENTRIC/ ECCENTRIC

DN 1	DN 2	25	40	50	80	100	125	150	200	250	300	350	400	450	500	600
40	L	140														
50	L	140	140													
80	L	140	140	140												
100	L	175	175	175	175											
125	L	200	200	200	200	200										
150	L	225	225	225	225	225	225									
200	L		250	250	250	250	250	250								
250	L			300	300	300	300	300	300							
300	L			350	350	350	350	350	350	350						
350	L							420	420	420	420					
400	L								440	440	440	440				
450	L									440	440	440	440			
500	L								595	595	595	595	595	595		
600	L										600	600	600	600	600	
700	L											600	600	600	600	600

GLASS LINED FLANGES :

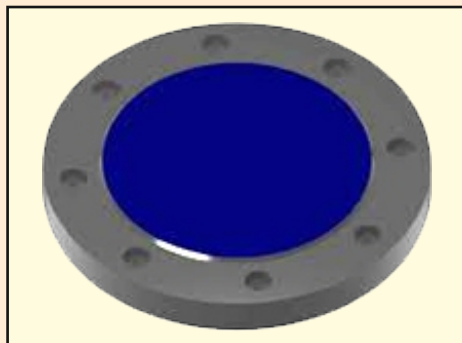
REDUCING FLANGE :



ASA150 & PN10

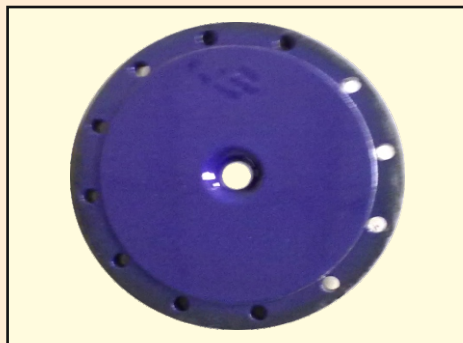
[illegible]

BLIND FLANGE :



BLIND / PRESSURE FLANGE	
ASA150 / PN10	
Nominal Diamiter = DN	
25	150
40	250
50	300
80	500
100	600
125	700

PRESSURE FLANGE :



GLASS LINED VALVES :

DIAPHRAGM VALVES :



BELLOW VALVES :



FLUSH BOTTOM VALVES :



SPINDLE :



RE-GLASS LINING SERVICES :



DAMAGED GLASS LINING



AFTER RE-GLASS LINING

GLASS LINED LAB VESSELS :



COMING SOON.....

www.adityaglassline.com



ADITYA GLASS LINE

PLOT NO : 9A/2, SANGITA COMPOUND, B/H VIDYA WIRE, OPP. VISWAKARMA,
NR. RITESH ENGINEERING, PHASE - I, G.I.D.C. VITTHAL UDYOGNAGAR - 388121.
ANAND, GUJARAT. INDIA.

PHONE : +91 8155899998, +91 9925284580

E-MAIL : INFO@ADITYAGLASSLINE.NET, SALES@ADITYAGLASSLINE.NET

WEB SITE : WWW.ADITYAGLASSLINE.NET