

NEXTGEN PLASMA

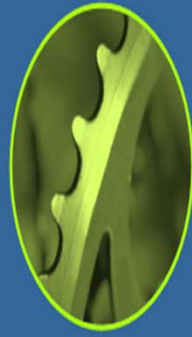
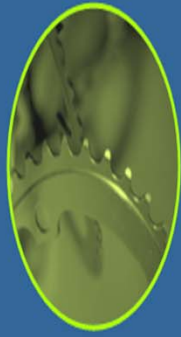
Welding Cutting & more...

NextGen Plasma Pvt. Ltd. are a leading supplier of automated welding systems and components. We apply proven experience and innovative solutions to automated welding and help manufacturing companies around the world to improve product quality and increase productivity.

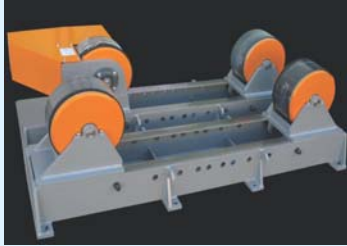
Nextgen products fall into three distinct categories:

- Fixtures – to hold and position the torch and / or part for automated Arc welding – GTAW / GMAW / SAW.
- System Integration - turnkey solutions that are custom built to meet our customers' needs.
- CNC Plasma / Flame Profile cutting System.

Addressing the most demanding
welding and cutting situations.



Welding Rotators, Manipulators & Column & Boom



Nextgen welding rotators are always RELIABLE.

Supplied with a stop/start foot switch

Speed range is 3 to 65 IPM

Weight capacity is 450 kg

When used in combination with a set of idler rolls, will rotate
Parts weighing up to 900 kg with diameters from 12 to 800 mm



Nextgen Geared tilt turntables or rotary tilting turntables are terms used for gear rotating positioners. They rotate at a variable speed and tilt the rotary table at a constant speed from flat to 135 degrees. Small positioner designs are often called bench top or table top positioners. Welding positioners sizes range from 50 kg. to 10 tons and more..



Nextgen Welding turntables, or welding rotating tables, provide a high-precision, low-cost method of rotating a pipe, vessel or industrial work piece around a vertical axis. Rotary turntables are used for precise positioning in the flat or horizontal position. Floor turntables are well suited for welding, flame cutting, X-ray and machining application.
Capacity -300kgs to 3 ton



Nextgen Welding Column Boom & Column Boom Manipulators, which are designed to work in conjunction with rotating and positioning equipment.

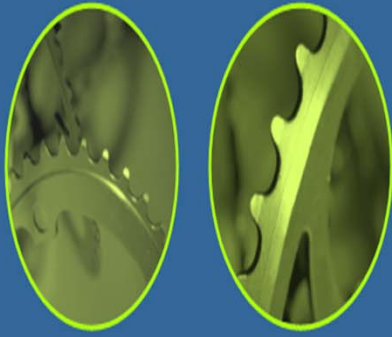
Vertical Stroke -1500mm-6000mm;

Horizontal Stroke-1500mm-6000mm;

Boom Traverse Speed-150-1250mm/min;

Boom Lift Speed-750mm/min;

Max.Load at Extreme end (kg)-100-300



Side Beam Carriage, Head-Tail Stock Manipulator & Straight Line Cutter



Nextgen Flat style **Side Beam Tracks and Travel Carriages.**

- A typical track and carriage system consists of a track, one or more carriages, support posts, and cantilevered booms for some models.
- Linear control is used with all powered carriages. Uses a linear drive system which offers smooth and backlash free travel.
- 135 kg load carrying capacity out 300 mm from the carriage face
- Maximum track length is 7620 mm.
- Manufactured from heavy steel plate and is reinforced with a structural channel section.



Nextgen Automated Welding Systems for manufacturing of Gas Bottles are designed for welding the circumferential seam or gas valve manifold with precision to achieve zero rejection and negligible re-work.

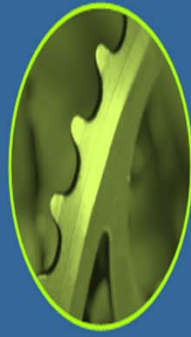
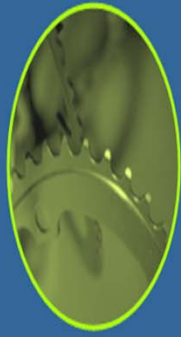
The system consists of a powered headstock, an adjustable pneumatic tailstock, and an adjustable weld head mounting post that rides on a precision machined base. The headstock rotation and the welding process \ sequencing are controlled by a microprocessor controlled control panel.



Nextgen straight-line track cutting system is available in plasma or oxyfuel configurations. It cuts up to 100mm thick plate with an oxyfuel torch and up to 25 mm thick plate with a plasma power source up to 100 amps.

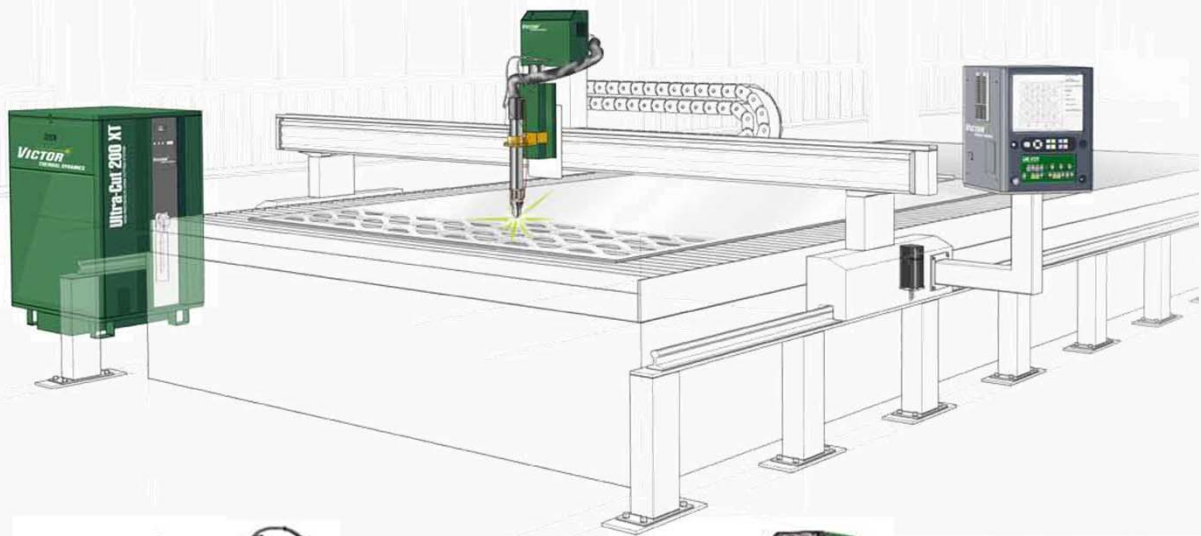
The small, portable unit is suitable for use on job sites and eliminates the hand cutting of long straights. The track can be extended in 1500mm sections to the required length. Adjustable torch heads can cut bevels and V's from 0 to 45 degrees.

A radius attachment is available to cut diameters from 150 mm to 1500mm.



CNC Plasma / Flame Profile Cutting Machine

Full Integrated Thermal Dynamics CNC Plasma Cutting System



Nexgen Plasma Private Limited association with Vikrant Special Machines Pvt.Ltd. manufactures CNC Profile Cutting Systems- The plasma cutter is capable of handling material up to 50mm thick. Heavy steel wall tube construction Rack and pinion drive system Precision planetary gear drive Precision 35mm linear rail system AC servo drive package Industrial CNC controller with built in shape library Dual side drive gantry Heavy duty cable carrier, Automatic torch height control "iTHC" with **iCNC XT Controller**. This machine can be set up with air or gas plasma systems

We bring intelligence to the table

NextGen Plasma Pvt. Ltd.

2A, C. I. T. Scheme No.: XXXV, Kolkata – 700017, INDIA.

Tel.: +91 33 64560082 / Fax.: +91 33 24550080,

email: sales@nextgenplasma.com / website: www.nextgenplasma.com

