

Yaxon Biocare Pvt. Ltd.

Backbone to a Healthy future

About Us

- **Founded in the year 2010.**
- **Huge distribution network of C&F agents & Stockists.**
- **Manufacturing Products for more than 1000 Clients in India.**
- **Manufacturing units in Parwanoo (H.P), Rai (H.R) Narela (Delhi).**
- **WHO Compliance Manufacturing Unit's.**
- **100% Excise Free Zone.**
- **Latest approval from DCGI and FSSAI.**

Certifications

GMP Certification



HACCP Certification



ISO Certification



Certifications

ISO Certification



DL-375/AYUSH/
A&U/DC/2016/208

FSSAI Certification



fssai

Central Lic. No. : 10018064001350
State Lic. No. : 10814020000270



Company Profile

Yaxon Biocare Pvt Ltd (YBPL) The company have established itself in a very short span of time and is very well known for the production of quality products. The company was awarded ISO 9001-2008, 22000-2005 & GMP WHO Compliance Certification. The company continued to maintain its high standards in market

Our facility has been in business since 2010 and is committed to meeting the ISO 9001:2008, 22000-2005 , GMP standards that are consistent with FDA and international PIC/S GMP regulatory requirements

The company received an exceptionally good response from the market, Producing high demands. Our manufacturing facility have ample production capacity to cater the national as well as international market.

Yaxon Biocare Pvt Ltd , was incorporated in 2010 as a private limited company . The Marketing office and production facilities are located at Plot No.6 & 7, HSIIDC Industrial Estate rai(H.R) India. The company is spread over an area of 15000 sqm, having manufacturing facilities for Beta Lactum& Non Beta Lactum Syrups, Drops, Tablets, Dry Syrups, Sachet , Capsules, Injections, External Preperation, Soft Gel Caps & all other types of Ayurvedic, Nutraceutical & Cosmetic Preperations..

Yaxon Biocare Pvt Ltd has state of the art machinery for manufacturing products. The quality control laboratory is fully equipped with all the required equipments for testing of Raw Material, in process and finish products. The production and Quality Control Staff is highly qualified having 10-15 years of experiences in Multinational and National Companies

We understand you are in lookout for good suppliers from India and it is here, we offer you our services and products.

We are committed to offer the best health-care products at affordable prices.

Yaxon Biocare Pvt Ltd is committed to providing you with streamlined manufacturing services of high-quality products. We stand confidently behind our entire product line. We feel happy to provide you with any data or support you require..

Nutraceutical Products

- CRANBERRY EXTRACT + D-MANNOSE TABLETS/SACHETS (Useful for Building Urinary Tract Health)
- CRANBERRY EXTRACT VITAMIN C, VITAMIN B5 & L-METHIONINE TABLETS
- GINSENG MULTIMINERALS MULTIVITAMINS WOMAN HEALTH SUPPLEMENT TABLETS
- FERROUS ASCORBATE 100 MG + FOLIC ACID 1.5 MG WITH ZINC 22.5 MG TABLETS/CAPSULES
- GINSENG, GREEN TEA EXTRACT, GINKGO BILOBA EXTRACT, GARLIC POWDER, LYCOPENE WITH MULTIVITAMIN, MULTIMINERALS & AMINO ACIDS CAPSULES
- CHOLECALCIFEROL 60000 I.U. TABLETS/SACHETS
- PRE-PRO BIOTIC WITH FUNGAL AMYLASE & FRUCTO OLIGOSACCHARIDES SACHET/CAPSULES
- PROBIOTIC SACHETS WITH ISABGOL HUSK (LACTOBACILLUS ACIDOPHILUS, BIFIDOBACTERIUM LACTIS BACILLUS COAGULANS)
- COLLAGEN PEPTIDES SACHETS TYPE (II)
- COLLAGEN PEPTIDE, GLUCOSAMINE SULPHATE & VITAMIN C SACHETS (12.5 gm)
- COLLAGEN PEPTIDE (TYPE I), CHONDROITIN SULPHATE, SODIUM HYALURONATE & VITAMIN C TABLETS/SACHETS
- COLLAGEN PEPTIDE (TYPE II), GLUCOSAMINE, CHONDROITIN WITH GINGER EXTRACT MULTIVITAMIN & MULTIMINERAL (TABLETS)
- COLLAGEN PEPTIDE, BIOTIN, GREEN TEA EXTRACT, GRAPE SEED EXTRACT, AMINO ACIDS VITAMINS & MINERALS TABLETS
- VITAMIN K2 7 WITH CALCITRIOL, CALCIUM CITRATE, METHYLCOBALAMIN, CHOLECALCIFEROL TABLETS
- L-GLUTATHIONE-500MG + ALPHA LIPOIC ACID-100 MG TABLETS
- L-GLUTATHIONE, ALPHA LIPOIC ACID, PYCNOGENOL, GREEN TEA EXTRACT, VITAMIN C GRAPE SEED EXTRACT, VITAMIN E & L-ARGININE TABLETS

Nutraceutical Products

- L GLUTATHIONE ALPHA LIPOIC ACID NATURAL EXTRACT VITAMINS & AMINO ACID TABLETS (Bottle Packing & Alu Alu Packing)
- IPRIFLAVONE, ALFACALCIDOL WITH CALCIUM CARBONATE TABLETS
- S ADENOSYL L METHIONINE 200/400 MG TABLETS
- AMINO ACIDS WITH MULTIVITAMIN CAPSULES
- LYCOPENE, DHA, ZINC & FOLIC ACID TABLETS
- MYO INOSITOL 1100 MG TABLETS
- MYO INOSITOL , L-METHYL FOLATE & VITAMIN D3 TABLETS
- L-ARGININE SACHETS
- L-ARGININE, PROANTHOCYANIDIN, DHA, FOLIC ACID & VITAMIN B6 SACHETS
- L-ARGININE + GRAPE SEED EXTRACT SACHETS
- L AGRININE, ZINC SULPHATE MONOHYDRATE & FOLIC ACID TABLETS
- L-METHYL FOLATE, PYRIDOXAL 5 PHOSPHATE, MECOBALAMIN TABLETS
- SILYMARINE WITH CO ENZYME Q10, MINERALS, VITAMINS, AMINO ACIDS & ANTIOXIDANTS TABLETS
- L-AGRININE 3 GMS + L-GLUTATHIONE 25 MG AND PROANTHOCYANIDIN 75 MG 5 GM SACHET
- L-METHYL FOLATE, PYRIDOXAL-5-PHOSPHATE, MECOBALAMIN, L-CARNITINE, (EPA&DHA) TABLETS
- LYCOPENE, AMINO ACIDS WITH MULTIVITAMIN & MULTIMINERALS CAPSULES/TABLETS
- VITAMIN B1, VITAMIN B2, VITAMIN B6, VITAMIN B12, NIACINAMIDE, CALCIUM, ZINC COPPER & FOLIC ACID CAPSULES
- METHYLSULFONYLMETHANE, ORNITHINE ALPHA-KETOGLUTARATE, L-LYSINE CHONDROITIN, GLUCOSAMINE, MULTIVITAMIN SACHETS
- EXTRACTS OF GARCINIA COMBOGIA, GUGGUL, GREEN COFFEE BEAN, GREEN TEA, GLABRA, GINGER WITH CHROMIUM SACHET

Nutraceutical Products

- VITAMIN K2-7 with CALCITRIOL, CALCIUM CARBONATE, BORON, ZINC TABLETS (15 Tablets Strip)
- L-5-METHYL TETRA HYDROFOLATE CALCIUM TABLETS
- CO-ENZYME Q10, L-CARNITINE, LYCOPENE POWDER & ZINC SULPHATE TABLETS
- L-CARNITINE, L-TARTARATE, MECOBALAMIN & FOLIC ACID TABLETS
- PHYTO-NUTRACEUTICALS (NETTLE LEAF EXTRACT, SAW PALMETTO EXTRACT PABA) L-LYSINE WITH BIOTIN, MULTIVITAMIN & MULTIMINERALS TABLETS (Hair Supplement)
- SOYA ISOFLAVONES, GRAPE SEED EXTRACT, AMINO ACIDS AND VITAMINS WITH MINERALS TABLETS (Hair Supplement)
- GRAPE SEED EXTRACT GREEN TEA EXTRACT GAMMA LINOLENIC ACID (BORAGE OIL) AMINO ACIDS & VITAMINS WITH MINERALS TABLETS (Hair Supplement)



Products

"Backbone to a Healthy Future"

Recent Launched Products



- ➔ Cranberry - 200 mg + D-Mannose -200 mg + Hibiscus Extract- 100 mg Tablet /Softgel
- ➔ Collagen Peptides - 175 mg + Grape Seed - 10 mg + Green Tea - 10 mg + Biotin - 10 mg Vitamins, Minerals, Amino Acids (Hair, Skin & Nails Formula) Tablet
- ➔ Saw Palmetto - 100 mg + Nettle leaf - 50 mg, Vitamins, Minerals, Amino Acids (Hair Growth Formula) Tablet
- ➔ Saw Palmetto - 100 mg + PABA - 50 mg + Nettle leaf- 50 mg + Lycopene - 4000 mcg + Omega-3 Fatty Acid - 1000 mcg + Biotin - 10 mg Vitamins, Minerals, Amino Acids Capsule/Softgel
- ➔ Calcium Aspartate - 1 120 mg + Pyridoxal-5-Phosphate- 2 mg + Mecobalamin A 1500 mcg + L-Methylfolate - 1 mg + Vitamin k2-7 - 45 mcg & Minerals Tablet
- ➔ Collagen Peptide - 10 g + Glucosamine Sulphate Potassium Chloride - 1500 mg + Vitamin C - 35 mg + Boswellia serrata - 200 mg + Vitamin D3 - 10 mcg Sachet
- ➔ Collagen Hydrolysate - 5 g + Rosehip Extract- 4.5 g Sachet
- ➔ Rosehip Extract - 750 mg + Vitamin C - 125 mg And Devils claw Extract Tablets
- ➔ Cissus auadrangularis Extract - 500 mg Capsule
- ➔ Vitamin k2-7 - 50 mcg + Calcium Citrate - 750 mg + Methylcobalamin - 1500 mcg + Cholecalciferol - 2000 IU Tablet
- ➔ Vitamin K2-7 - 50 mcg + Calcitriol - 0.25 mcg + Calcium Carbonate - 225 mg + Magnesium - 50 mg + Zinc - 7.5 mg Tablet
- ➔ Calcium Citrate - 1250 mg + Magnesium - 100 mg + Zinc - 4 mg + Vitamin D3 - 12.5 mcg Tablet
- ➔ Myo-inositol - 500 mg + N Aetyl Cysteine - 300 mg + Vitamin E - 15 mg + L-Carnitine - 30 mg + L-Arginine - 30 mg + Folic Acid - 100 mcg + Selenium - 30 mcg Tablet
- ➔ Calcium Citrate Malate - 1250 mg + Calcitriol - 0.25 mg + Vitamin D3 400 I.U. Tablet
- ➔ Calcium Aspartate - 560 mg Tablet
- ➔ Calcium Citrate - 500 mg + Vitamin D3 - 10 mcg Tablet
- ➔ Milk Calcium - 500 mg + Magnesium - 100 mg + Vitamin C - 50 mg + Zinc - 7.5 mg + Vitamin D3 - 50 mcg + Menaquinone - 45 mcg Tablet
- ➔ Ipriflavone - 300 mg + Alfalcidol - 0.25 mcg + Calcium Carbonate - 500 mg Tablet/Softgel
- ➔ Saw palmetto - 140 mg, Nettle Leaf Extract- 180 mg, Pygenum Africanum - 30 mg, Zinc - 10 mg, Lycopene - 10 mg, Green Tea Extract- 40 mg Capsule
- ➔ Cyanocobalamin - 1500 mcg + Vitamin B6 - 3 mg + Alphalipoic Acid - 100 mg + Folic Acid - 1.5 mg Tablet/Capsules
- ➔ D-Ribose - 500 mg + L-Carnitine - 500 mg + Ubiquinol - 50 mg + Magnesium - 50 mg Tablet/Softgel
- ➔ Berberine - 475 mg, Purslane - 180 mg, Gymnema sylvestre - 200 mg, Banaba leaf extracts - 3 mg Vitamins & Minerals Tablet/Softgel
- ➔ Pre - Pro Biotic with B-Complex Vitamins Capsule
- ➔ Lyophilized Saccharomyces Boulardii - 250 mg Sachet
- ➔ Wheat Grass 100 gm Powder in Jar



Yaxon Biocare Pvt. Ltd.
www.yaxonbiocare.com

Products

“Backbone to a Healthy Future”

Recent Launched Products

- ➔ Calcium Citrate Malate With Vitamin D3 Sachet 4 gm
- ➔ Bilberry Extract with Pine Bark Extract Tablets
- ➔ L-ornithine L-Aspartate - 3 g Sachet 5 gm
- ➔ Silymarin - 140 mg with LOLA (L-Ornithine, L-Aspartate, B-Complex & Silymarin Tablets)
- ➔ L-Glutathione - 500 Mg + Vitamin C - 50 mg Tablet
- ➔ Ferrous Ascorbate - 100 mg + Folic Acid - 1.5 mg + Zinc - 61.8 mg Tablet/Softgel
- ➔ Ferrous Ascorbate - 100 mg + Folic Acid - 200 mcg + Zinc - 7.5 mg + Vitamin D3 - 10 mcg + Cyanocobalamin -1500 mcg Tablet/Softgel
- ➔ Ferrous Asparto Glycinate - 100 mg + L-Methyltolate Calcium - 1 mg + Pyridoxal-5- Phosphate - 0.5 mg + Cyanocobalamin -1500 mcg + Cholecalciferol - 50 mcg Tablet
- ➔ Ferrous Ascorbate - 200mg + L-Lysine - 100 mg + Zinc - 32 mg + Lycopene - 10000 mcg + Folic Acid - 5000 mcg + Cyanocobalamin - 500 mcg + Selenium - 65 mcg + Vitamin D3 - 25 mcg Tablet
- ➔ Myo inositol - 550 mg + D-chiro-inositol - 13.8 mg + Chromium - 100 mcg + Vitamin D3 - 5 mcg Tablet/Softgel
- ➔ Myo-inositol - 1100 mg + D-Chiro-Inositol - 27.6 mg + L-Methyl Folate Calcium - 200 mcg + Vitamin D3 - 400 IU Tablet
- ➔ D-Choro-inositol - 75 mg + N-Acetyl Cysteine - 75 mg + Alpha-Lipoic Acid - 40 mg + Vitamin C - 35 mg + Calcium Carbonate - 110 mg + DHA - 60 mg Capsule
- ➔ L Methylfolate - 1 mg + Cyanocobalamin - 1.5 mg + Pyridoxal-5-Phosphate - 0.5 mg & Vitamin D3 - 25 mcg Tablet
- ➔ Co Enzyme Q10 - 25 mg + L-Carnitine - 250 mg + Lycopene Powder - 2500 mcg & Zinc - 12 mg Tablet
- ➔ Green Tea Extract + Ginseng + Ginkgo Biloba + Lycopene + Garlic + L-Carnitine L-Tartrate with Vitamins & Minerals Capsule
- ➔ Cyanocobalamin - 1000 mcg + Alphalipoic Acid- 200 mg + Vitamin B6 - 3 mg + Folic Acid - 1.5 mg + Inositol - 100 mg + Benfotiamine - 100 mg Capsule
- ➔ Amino Acids + Vitamin A- 0.5mg + Thiamine-1 .6mg + Riboflavin-2mg + Nicottnamide-20mg + Pyridoxine HCL 1.2 mg + Folic Acid- 0.5mg + Calcium Pantothenate- 0.4mg + Cyanocobalamin - 1 mcg + Ascorbic Acid 40 mg + Tocopheryl Acetate - 5 mg + Biotin - 30 mcg + Cholecalcrlterol - 2.5 mcg Capsule/Softgel
- ➔ Valrne 135 mg + L-Methionine - 90 mg + Leucine - 90 mg + Tyrosine - 75 mg + Phenylalanine - 70 mg + Lysine 65 mg + Threonine - 65 mg + Isoleucine - 60 mg + Histidine - 45 mg + Tryptophan - 25 mg Tablet
- ➔ Alpha Lipoic Acid - 200 mg + Benfotiamine - 150 mg + Myo-Inositol-150 mg + Pyrialoxal-5-Phosphate - 2 mg + L -Methylfolate - 0.8 mg + Cyanocobalamin - 1500 mcg + Chromium Picolinate - 200 mcg Capsule
- ➔ Green Tea - 200 mg + Lycopene - 5000 mcg , Vitamins & Mineral Capsule
- ➔ Vitamin B1 - 1.4 mg + Vitamin B2 -1.6 mg + Vitamin B6 - 1.5 mg + Vitamin B12 - 1 mcg + Niacinamide 18 mg + Folic acid - 200 mcg + Calcium - 5 mg + Zinc - 600 mcg + Copper - 25 mcg Capsule
- ➔ Lycopene, Cyanocobalamin, Carotenoids & Multivitamin Capsules
- ➔ Green Tea - 100 mg + Isotlavones - 50 mg + Vitamin C - 40 mg + Coenzyme Q10 - 30 mg + Pine Bark - 25mg + Lycopene - 8000 mcg + Alfa Lipoic Acid - 200 mg + Cyanocobalamin - 1500 mcg
- ➔ A -Z Formula Tablet / Capsules

Products

“Backbone to a Healthy Future”



Recent Launched Products

- ➔ Curcumin 500 mg, Piperine 5 mg, lycopene 1000 mcg tablets
- ➔ Green Tea Extract, Cyanocobalamin, Lycopene, Vitamins & Minerals Capsule/Softgel
- ➔ Tribulus Terrestris, Chasteberry, Evening Primrose, Green Tea, Lycopene, Vitamins, Minerals With Amino Acids Capsule
- ➔ Ginseng , Ginkgo Biloba, Citrus Biotlavonoids, Grape Seed, Natural Mixed Carotenoids, Green Tea, Piperine, Lutein With Omega 3 Fatty Acids, Multivitamin, Multimineral, Trace Elements is Microorganism Tablet/Softgel
- ➔ Ginseng, Wheat Germ Oil, Citrus Biotlavonoids, Natural Mixed Carotenoids, Grape Seed, Green Tea, Ginkgo Biloba, Piperine, Lutein & Omega -3 Fatty Acid, Pre-Pro Biotic, Multivitamin & Multimineral Tablet/Softgel
- ➔ Lycopene - 6000 mcg + Cyanocobalamin - 750 mcg + Carotenoids - 4800 mcg + Lutuin-6 mg , Multivitamin & Multimineral Capsule/Softgel
- ➔ Vitamin B-Complex With Multimineral Tablet/Softgel
- ➔ Grape Seed, Ginseng, Ginkgo Biloba, Green Tea, Garlic, Lycopene, Citrus Biotlavonoids, Multivitamin, Multimineral & Amino Acids (5G Vegetarian Combination)Tablet
- ➔ Ginseng, Green Tea Extract, Grape Seed Extract, Ginkgo Biloba, Garlic Powder, Guggul Extract, Ginger Root Extract, Green Coffee Bean Extract, Glycyrrhiza Glabra Extract, Lycopene, Citrus Bioflavonoids, Multivitamin, Multimineral & Amino Acids (9G Tablets)
- ➔ Each 15ml contains: Lycopene Formula Syrup 200 ml
- ➔ L-Lysine - 50 mg + Nicotinamide - 15 mg + D-Panthenol - 3 mg + Ribotlavin Sodium Phosphate - 2.5 mg + Thiamine HCL- 2 mg + Pyridoxine HCL - 0.75 mg + Cyanocobalamin - 2 mcg Syrup 200 ml
- ➔ Each 15ml contains : Multivitamin Formula Syrup 200 ml
- ➔ Green Tea - 400 mg + Garcinia cambogia - 150 mg + Ginger- 20 mg + Piperine - 5 mg Sachet 1gm
- ➔ Soya Protein, Milk Powder, Green Tea, Garcinia cambogia, Caralluma fimbriata, Biotin, Amino Acids, Vitamins & Minerals Sachet
- ➔ Each 5ml contains : Ofloxacin - 50mg Suspension 30 ml
- ➔ Ursodeoxy Cholic Acid - 150/300 mg Tablet
- ➔ Omeprazole - 10 mg + Ondansetron - 4 mg Tablet
- ➔ Each 5ml contains : Ofloxacin - 50mg + Tinidazole - 150 mg Suspension 30 ml
- ➔ Each 5ml of the reconstituted suspension contains : Amoxycillin -125 mg Dry Syrup 30 ml
- ➔ Each 5ml contains : Azithromycin - 100/200 mg Suspension 15 ml
- ➔ Each 5ml contains : Roxithromycin - 50 mg Suspension 30 ml
- ➔ Norfloxacin - 400 mg + Tinidazole - 600 mg Tablet
- ➔ Linezolid - 600 mg Tablet
- ➔ Each 5ml contains : Cefixime/Cefpodoxime - 50 mg Dry Syrup
- ➔ Each 5gm contains : Extract of Garcinia Combogia, Guggal, Green Coffee Bean, Green Tea, Glycyrrhiza, Glabra, Ginger with Chromium Picolinate Sachets



Yaxon Biocare Pvt. Ltd.
www.yaxonbiocare.com

Products

"Backbone to a Healthy Future"

Recent Launched Products

- Luliconazole 1.0% w/w cream 15 gm
- Gamabenzene Lotion 100 ml
- Carbonyl Iron - 50/100 mg + Zinc Sulphate - 22.5 mg + Folic Acid - 0.5/1 .5 mg Capsule
- Ferrous Fumarate - 30 mg + Folic Acid - 1.5 mg + Vitamin B12 - 10 mcg + Elemental Zinc - 15 mg Tablet
- Iron (III) Hydroxide Polymaltose Complex - 50/15 mg + Folic Acid - 0.5/0.2 mg Syrup 200 ml/Drops 15 ml/Sotlgel
- Minoxidil Tropical Solution 5%
- Each 15ml contains: Ferric Ammonium Citrate - 160 mg + Cyanocobalamin - 7.5 mcg + Folic Acid - 0.5 mg + Cupric Sulphate - 30 mcg + Manganese Sulphate - 30 mcg Syrup 200 ml
- Each 5ml contains: Ferric Ammonium Citrate - 10 mg + Folic Acid - 1.5 mg + Cyanocobalamin - 15 mcg + Sorbitol Sol (70%) Q.S. Syrup 200 ml
- Each 5ml contains: Ferrous Gluconate - 129.5 mg (Ea. to Elemental Iron 15 mg)+ Folic Acid - 0.25 mg + Vitamin B12 - 1.25 mcg + Calcium Lactate - 75 mg Syrup
- Each 15ml contains: Ferric Ammonium Citrate - 160 mg (Ea. to Elemental Iron 32 mg) + Folic Acid - 0.5mg + Cyanocobalamin - 7.5mcg Syrup 200 ml
- Each 15ml contains: Ferric Ammonium Citrate - 200 mg (Eq. to Elemental Iron 41 mg) + Cyanocobalamin - 7.5 mcg + Folic Acid - 0.5 mg + Zinc - 7 mg + Pyridoxine Hcl - 15 mg + Sorbitol (70%) - 750 mg Syrup 200 ml
- Ferrous Ascorbate - 200 mg + L-Lysine - 100 mg + Zinc - 32 mg + Lycopene - 10000 mcg + Folic Acid - 5000 mcg + Cyanocobalamin - 500 mcg + Selenium - 65 mcg + Vitamin D3 - 25 mcg Tablet
- Ginseng - 42.5 mg, Vitamins 8, Minerals Softgel
- Vitamin D3 - 0.25 mcg + Omega 3 Fatty acids (EPA - 180 mg 8, DHA - 120 mg) + Cyanocobalamin - 1500 mcg + Folic Acid - 400 mcg + Boron - 1.5 mg + Calcium Carbonate - 500 mg Softgel
- Ferrous Asparto - 100 mg + L-Methylfolate Calcium - 300 mcg + Cyanocobalamin - 1500 mcg Softgel
- S-Adenosyl L-Methionine - 400 mg + L-5 Methyltetrahydrofolate Calcium - 500 mcg
- Cyanocobalamin - 1500 mcg Tablet/Softgel
- Ketoconazole - 2% W/W Shampoo 100 ml
- Aceclofenac - 100 mg + Paracetamol - 325 mg + Thiocolchicoside - 4 mg Tablet
- Ketorolac - 10 mg Tablet
- Ginseng, Vitamins & Minerals Capsule/Softgel
- Each 5ml contains: Albendazole - 200mg + Ivermectin - 3mg Drops 10 ml
- Permethrin Lotion 60 ml
- Cerebroprotein Hydrolysate 90 mg Tablets
- Curcuma Longa Extract (Standardized to 95% Curcumin) 600 mg, Piper Nigrum Extract (Standardized to 95% Piperine) 5 mg Tablets
- L-Methylfolate-1 mg, Cyanocobalamin-1500 mcg, Pyridoxine HCl-1.5 mg & Docosahexaenoic Acid-100 mg Tablets

Products

“Backbone to a Healthy Future”

Soft Gelatin Capsule Nutraceuticals



- ➔ Ginseng, Green Tea Extract, Grape Seed Extract, Ginkgo Biloba, Garlic Powder, Guggul Extract, Ginger Root Extract, Green Coffee Bean Extract, Glycyrrhiza Glabra Extract, Lycopene, Citrus Bioflavonoids, Multivitamin, Multimineral & Amino Acids (9G Tablets)
- ➔ Vitamin D3, Calcium, Zinc & Magnesium
- ➔ Grape Seed, Vitamin E, Beta Carotene, Lycopene, Zinc oxide, Lutein, Selenium, Manganese & Copper
- ➔ Coenzyme Q10, Lycopene, Mixed Carotene, Omega 3 Fatty acids (EPA and DHA), Calcium Ascorbate, Zinc, Wheat Germ Oil, Vitamin B12 & Selenium dioxide
- ➔ L-Carnitine L-Tartrate, Ginkgo Biloba, Green Tea, Lycopene, Mixed Carotene, Multivitamin & Multimineral
- ➔ Ginseng, Grape seed extract, Lycopene, Iron, Calcium, Multivitamin, Multimineral & Amino Acids
- ➔ Co-enzyme Q10, Lycopene, Fish oil & Selenium
- ➔ L-Methyl Folate, Vitamin K2-7, Cyanocobalamin, Pyridoxine, Lycopene & ALA
- ➔ Co-enzyme Q10, L-Arginine, Fish oil & Selenium
- ➔ Bentotiamine, Cyanocobalamin, Alpha Lipoic Acid, Chromium, Inositol & Folic Acid
- ➔ Ginseng, Grape seed extract, Lycopene, Multivitamin, Multimineral & Amino Acids
- ➔ Grape Seed Extract- 50 mg, Multivitamin & Multimineral
- ➔ Myo-inositol, N-Acetyl Cysteine, Biotin, Lycopene, Folic acid, Chromium & Vitamin D3
- ➔ Ubidecarnone (Coenzyme Q10), L-Carnitine L-Tartrate, Zinc ascorbate, Lycopene & Astaxanthin
- ➔ Omega 3 Fatty acids (EPA and DHA), Alpha-lipoic acid, Pine Bark Extract, Bentotiamine, Beta-Carotene & Multivitamin
- ➔ Omega 3 Fatty acids, Coenzyme Q10, Vitamin B6, Cyanocobalamin, Vitamin E & Vitamin C
- ➔ L- Lysine, L- Arginine, Reduced Glutathione, Chromium Nicotinamide, Multivitamin & Multimineral
- ➔ L-Methylfolate, Vitamin K2-7, Cyanocobalamin, Pyridoxal-5-Phosphate, Lycopene & Alpha Liopic Acid
- ➔ Amino Acids, 5-Hydroxyanthranilic acid, Multivitamin & Multimineral
- ➔ Lycopene, Zinc Sulphate, Selenium dioxide, Vitamin A, Vitamin C & Vitamin E
- ➔ L-Arginine, Vitamin E, Beta-Carotene 10%, Lycopene 10%, Zinc oxide, Selenium dioxide, Lutein 8% Manganese & Copper
- ➔ Lycopene 6%, Cyanocobalamin, Lutein 10%, Black grape seed & Beta-Carotene
- ➔ Grape Seed, Lycopene 6%, Zinc sulphate, Lutein 8%, Selenium & Multivitamin
- ➔ Vitamin B1, Vitamin B2, Vitamin B3, Vitamin B6, Pantothenic acid, Cyanocobalamin, Vitamin C, Folic acid, Biotin & Hydrogenated oil



Yaxon Biocare Pvt. Ltd.
www.yaxonbiocare.com

Products

“Backbone to a Healthy Future”

Soft Gel Capsules Drug

- Doxercalciferol 0.05 mcg
- Doxercalciferol 2.5 mcg
- Methylcobalamin JP 500 mcg + Alpha Lipoic acid USP 100 mg + Pyridoxine Hydrochloride IP 3 mg + Folic acid IP 1.5 mg
- Methylcobalamin JP 500 mcg + Alpha Lipoic acid USP 100 mg + Folic acid IP 1.5 mg + Benfotiamine 50 mg
- Methylcobalamin JP 500 mcg + Beta Carotene 10.33 mg + Alpha Lipoic acid USP 100 mg + Vitamin B1 IP 2 mg + Vitamin B6 IP 1.5 mg + Chromium Polynicotinate 200 mcg
- Methylcobalamin JP 500 mcg + Alpha Lipoic acid USP 100 mg
- Chlorpheniramine Maleate IP 2 mg + Dextromethorphan Hydrobromide IP 10 mg + Phenylephrine Hydrochloride IP 5 mg
- Methylcobalamin JP 1500 mcg + Alpha Lipoic acid USP 100 mg + Folic acid IP 1.5 mg + Calcium Pantothenate IP 10 mg + Vitamin B1 IP 2 mg + Vitamin B6 IP 1.5 mg + Vitamin E Acetate IP 25 I.U + Vitamin A USP 5000 I.U + Inositol USP 100 mg + Chromium Polynicotinate 200 mcg
- Cholecalciferol (Vitamin D3) IP 60000 I.U
- Calcitriol IP 0.25 mcg + Calcium Carbonate IP 1250 mg Eq to elemental Calcium 500 mg + Boron (as Sodium Borate) USP 1500 mcg + Methylcobalamin JP 500 mcg + L-Methyl Folate IP 800 mcg + Magnesium (as Magnesium Oxide) 50 mg + Zinc (as Zinc Sulphate Monohydrate) IP 7.5 mg
- Calcitriol IP 0.25 mcg + Calcium Carbonate IP 500 mg Eq to elemental Calcium 200 mg + Zinc (as Zinc Sulphate Monohydrate) IP 7.5 mg
- Folic Acid IP 5 mg + Docosahexaenoic Acid 200 mg
- Coenzyme-Q10 USP 100 mg + Eicosapentaenoic Acid 90 mg + Docosahexaenoic Acid 60 mg + L-Arginine IP 100 mg + Selenium Dioxide Monohydrate Eq. to Elemental Selenium USP 100 mcg
- Isotretinoin IP 20 mg
- Isotretinoin IP 10 mg
- Vitamin K27 25 mcg + Calcitriol IP 0.25 mcg + Calcium Carbonate IP 625 mg Eq to elemental Calcium 250 mg
- Fish Oil, Rich in Omega-3-Acid BP 180 mg + Eicosapentaenoic Acid 120 mg + Docosahexaenoic Acid 120 mg + Methylcobalamin JP 1500 mcg + Calcitriol IP 0.25 mcg + Calcium Carbonate IP 500 mg + Boron (as Disodium Tetraborate) BP 1.5 mg + Folic acid IP 400 mcg

Products
“Backbone to a Healthy Future”
Soft Gelatin Capsule Drug



- ➔ Evening Primrose Oil & Cod Liver Oil Soft Gelatin Capsules
- ➔ Evening Primrose Oil Soft Gelatin Capsules
- ➔ Lycopene, Black Grape Seed Extract, D.I.methionine, Adenosylcobalamin & Lutein Soft Gelatin Capsules
- ➔ Clindamycin & Clotrimazole Vaginal Suppositories
- ➔ Cyanocobalamin, Alpha Lipoic Acid, Pyridoxine Hydrochloride, Folic Acid Soft Gelatin Capsule.
- ➔ Clindamycin Capsules IP 300 Mg
- ➔ Isotretinoin Capsules USP 20 mg
- ➔ Isotretinoin Capsules USP 10 mg
- ➔ Vitamin K2 7, Vitamin D3, Calcium Carbonate Soft Gelatin Capsules
- ➔ Omega 3 Fatty acid, Cyanocobalamin, Vitamin D3, calcium carbonate, boron & folic acid soft Gelatin capsules
- ➔ Cholecalciferol 60000 IU soft Gelatin Capsules
- ➔ Calcium , Vitamind D3 & Zinc Soft Gelatin Capsules
- ➔ Folic Acid & Docosahexaenoic Acid soft Gelatin capsules
- ➔ Coenzyme- Q10, Eicosapentaenoic, Docosahexaenoic, L-Arginine & Selenium Soft Gelatin Capsules



Yaxon Biocare Pvt. Ltd.
www.yaxonbiocare.com

Products

“Backbone to a Healthy Future”

Tablets Drug

- Ofloxacin IP 200 mg
- Ofloxacin IP 200 mg + Ornidazole IP 500 mg
- Aceclofenac IP 100 mg + Thiocolchicoside IP 4 mg
- Aceclofenac IP 100 mg + Thiocolchicoside IP 8 mg
- Montelukast Sodium IP 4 mg + Levocetirizine Dihydrochloride IP 2.5 mg
- Pantoprazole Sodium Sesquihydrate IP 40 mg
- Paracetamol IP 325 mg + Nimesulide IP 100 mg
- Voglibose Tablet IP 0.2 mg
- Voglibose Tablet IP 0.3 mg
- Ursodeoxycholic acid IP 300 mg
- Ursodeoxycholic acid IP 150 mg
- Paracetamol IP 325 mg + Diclofenac Potassium IP 50 mg + Chlorzoxazone IP 250 mg
- Paracetamol IP 325 mg + Diclofenac Potassium IP 50 mg + Serratiopeptidase IP 10 mg
- Pantoprazole Sodium IP 40 mg + Sesquihydrate IP Eq. to Pantoprazole Domperidone 10 mg
- Aceclofenac IP 100 mg + Paracetamol IP 325 mg
- Olanzapine IP 5 mg
- Olanzapine IP 10 mg
- Rabeprazole Sodium IP 20 mg
- Cefpodoxime Proxetil Eq. to Cefpodoxime IP 200 mg
- Escitalopam Oxalate IP Eq. to Escitalopam 10 mg Clonazepam IP 0.5 mg
- Betahistine Dihydrochloride IP 16 mg
- Betahistine Dihydrochloride IP 8 mg
- Azithromycin (as dihydrate) Eq. to Azithromycin anhydrous IP 500 mg
- Azithromycin (as dihydrate) Eq. to Azithromycin anhydrous IP 250 mg
- Escitalopam oxalate Eq. to Escitalopam IP 10 mg
- Ketoconazole IP 200 mg
- Levocetirizine Dihydrochloride IP 5.0 mg
- Ondansetron Hydrochloride IP 4 mg
- Cefuroxime Axetil Eq. to Cefuroxime IP 250 mg
- Cefuroxime Axetil Eq. to Cefuroxime IP 500 mg

Products

“Backbone to a Healthy Future”

Tablets Drug



- Amlodipine Besylate Eq. to Amlodipine IP 10 mg + Atenolol IP 50 mg
- Amlodipine Besylate IP 5 mg
- S-Amlodipine Besylate Eq. to Amlodipine IP 2.5 mg
- Amlodipine Besylate Eq. to Amlodipine IP 10 mg
- Roxithromycin IP 150 mg
- Fluconazole IP 150 mg
- Levofloxacin Hemihydrate Eq. to Levofloxacin IP 500 mg
- Levofloxacin Hemihydrate Eq. to Levofloxacin IP 250 mg
- Telmisartan IP 40 mg
- Ramipril IP 5 mg
- Ramipril IP 10 mg
- Ciprofloxacin Hydrochloride Eq. to Ciprofloxacin IP 250 mg
- Ciprofloxacin Hydrochloride Eq. to Ciprofloxacin IP 500 mg
- Amoxycillin Trihydrate Eq. to Amoxycillin IP 250 mg + Potassium Clavulanate (as potassium clavulanate diluted) Eq. to Clavulanic acid IP 125 mg
- Amoxycillin Trihydrate Eq. to Amoxycillin IP 200 mg + Potassium Clavulanate (as potassium clavulanate diluted) Eq. to Clavulanic acid IP 28.5 mg
- Cefpodoxime proxetil Eq. to Cefpodoxime IP 100 mg
- Cefpodoxime proxetil Eq. to Cefpodoxime IP 50 mg
- Deflazacort IP 6.0 mg
- Diclofenac Potassium IP 50 mg + Serratiopeptidase IP 10 mg
- Glimepride USP 2 mg
- Glimepride USP 1 mg
- Glimepride USP 1 mg + Metformin Hydrochloride IP 500 mg
- Glimepride USP 2 mg + Metformin Hydrochloride IP 500 mg
- Enalapril Maleate IP 2.5 mg
- Losartan Potassium BP 50 mg + Hydrochlorthiazide BP 12.5 mg
- Losartan Potassium BP 50 mg
- Glucosamine Sulphate IP 750 mg + potassium chloride Eq. to glucosamine 446 mg + Diacerin IP 50 mg
- Glucosamine Sulphate IP 750 mg + potassium chloride Eq. to glucosamine 446 mg + Diacerin IP 50 mg + Methyl sulphonyl methane IP 250 mg



Yaxon Biocare Pvt. Ltd.
www.yaxonbiocare.com

Products

“Backbone to a Healthy Future”

Tablets Drug

- Rosuvastatin Calcium Eq. to Rosuvastatin IP 10 mg
- Rosuvastatin Calcium Eq. to Rosuvastatin IP 20 mg
- Rosuvastatin Calcium Eq. to Rosuvastatin IP 5 mg
- Cefixime (as trihydrate) Eq. to cefixime anhydrous IP 200 mg + Ofloxacin IP 200 mg
- Cefixime (as trihydrate) Eq. to cefixime anhydrous IP 100 mg + Ofloxacin IP 100 mg
- Cefpodoxime Proxetil Eq. to Cefpodoxime IP 200 mg + Ofloxacin IP 200 mg
- Cefpodoxime Proxetil Eq. to Cefpodoxime IP 100 mg + Ofloxacin IP 100 mg
- Atorvastatin Calcium Eq. to Atorvastatin IP 10 mg
- Atorvastatin Calcium Eq. to Atorvastatin IP 20 mg
- Atorvastatin Calcium Eq. to Atorvastatin IP 40 mg
- Atorvastatin Calcium Eq. to Atorvastatin IP 80 mg
- Methylethergometrine Maleate IP 125 mcg
- Esomeprazole Magnesium Trihydrate Eq. to Esomeprazole IP 20 mg
- Esomeprazole Magnesium Trihydrate Eq. to Esomeprazole IP 30 mg
- Ferrous Ascorbate 100 mg + Folic acid 1.5 mg + Cyanocobalamin IP 15 mcg + Zinc Sulphate Monohydrate IP 22.5 mg
- Ferrous Ascorbate Eq. to ele. Iron 100 mg + Folic acid 1.1 mg + Methylcobalamin IP 1.5 mg + Zinc Sulphate Monohydrate Eq. to ele. Zinc IP 22.5 mg
- Adenosylcobalamin 15 mcg + Ferrous Ascorbate 100 mg + Folic acid 1.5 mg + Zinc Sulphate Monohydrate Eq. to ele. Zinc IP 22.5 mg
- Levocetirizine Dihydrochloride IP 5 mg + Ambroxol Hcl (Sustained release pellets) IP 75 mg
- Aceclofenac IP 100 mg + Paracetamol IP 325 mg + Serratiopeptidase (as enteric coated granules) IP 15 mg
- Calcium Citrate Maleate Eq. to ele. Calcium IP 250 mg + Vitamin D3 200 I.U
- Gabapentin USP 300 mg + Methylcobalamin JP 500 mcg
- Thicolicoside IP 8 mg + Etoricoxib IP 60 mg
- Paracetamol IP 500 mg + Phenylephrine Hcl IP 5 mg + Caffeine (anhydrous) IP 30 mg + Diphenhydramine Hcl IP 25 mg
- Paracetamol IP 625 mg
- Ofloxacin IP 400 mg
- Paracetamol IP 500 mg
- Cefixime (as trihydrate) Eq. to Cefixime anhydrous IP 100 mg + Lactic acid bacillus 2.5billion spores
- Fexofenadine Hydrochloride IP 180 mg
- Fexofenadine Hydrochloride IP 120 mg

Products

“Backbone to a Healthy Future”

Tablets Drug



- Cefixime (as trihydrate) Eq. to Cefixime anhydrous IP 200 mg
- Montelukast sodium Eq. to Montelukast IP 10 mg + Levocetirizine hydrochloride IP 10 mg
- Cefixime (as trihydrate) Eq. to Cefixime anhydrous IP 200 mg + Lactic acid bacillus 2.5 billion spores
- Cetirizine Hydrochloride IP 10 mg
- Artemether IP 80 mg + Lumefantrine USP 480 mg
- Azithromycin Dihydrate Eq. to Azithromycin anhydrous IP 100 mg
- Cefixime (as trihydrate) Eq. to Cefixime anhydrous IP 100 mg
- Hydroxyzine hydrochloride USP 25 mg
- Aceclofence IP 200 mg
- Cinnarizine IP 20 mg + Domperidone IP 15 mg
- Tranexamic acid BP 500 mg + Mefenamic acid IP 250 mg
- Methylprednisolone IP 4 mg
- Etoricoxib IP 90 mg
- Drotaverine Hydrochloride IP 80 mg + Mefenamine acid IP 250 mg
- Montelukast sodium Eq. to Montelukast IP 4 mg + Levocetirizine Dihydrochloride IP 2.5 mg
- Tramadol Hydrochloride IP 37.5 mg + Paracetamol IP 325 mg
- Clarithromycin IP 500 mg
- Clarithromycin IP 250 mg
- Cefixime (as trihydrate) Eq. to cfixime anhydrous IP 100 mg
- Doxylamine Succinate Eq. to Doxylamine USP 10 mg + Pyridoxine Hydrochloride IP 10 mg + Folic acid IP 2.5 mg
- Glimepride IP 2 mg + Metformin hydrochloride (as sustained related) IP 500 mg
- Primaquine Phosphate Eq. to Primaquine IP 15 mg
- Tolperisone Hydrochloride IP 150 mg + Diclofenac Sodium IP 15 mg
- Ivermectin BP 6 mg
- Ivermectin BP 12 mg
- Deflazacort 30 mg
- Levocetirizine Hemihydrate Eq. to Levofloxacin IP 250 mg + Ornidazole IP 500 mg
- Hydroxyzine Hydrochloride USP 10 mg
- Cefixime (as trihydrate) Eq. to cefixime ahydrous IP 10 mg + Ornidazole IP 500 mg
- Calcium Carbonate Eq. to ele. Calcium IP 1250 mg + Vitamin D3 IP 500 mg



Yaxon Biocare Pvt. Ltd.
www.yaxonbiocare.com

Products

“Backbone to a Healthy Future”

Tablets Drug

- Divalproex Sodium Eq. to Valproic Acid IP 500 mg
- Divalproex Sodium Eq. to Valproic Acid IP 750 mg
- Citicoline Sodium Eq. to citicoline IP 500 mg
- Duloxetine -Hydrochloride BP 20 mg
- Sodium Valporate IP 133.5 mg + Valporic Acid IP 58 mg (both together correspond to Sodium Valproate 200 mg)
- Sodium Valporate IP 200 mg + Valporic Acid IP 87 mg (both together correspond to Sodium Valproate 300 mg)
- Sodium Valporate IP 333 mg + Valporic Acid IP 145 mg (both together correspond to Sodium Valproate 500 mg)
- Betahistine Hydrochloride IP 16 mg
- Clobazam IP 20 mg
- Clobazam IP 10 mg
- Loratadine IP 10 mg
- Amlodipine Besylate Eq. to Amlodipine IP 5 mg + Atenolol IP 50 mg
- Cetirizine Hydrochloride IP 5 mg + Ambroxol hydrochloride IP 60 mg
- Nimesulide BP 100 mg
- Clarithromycin IP 125 mg
- Acetylcysteine BP 300 mg + Ambroxol Hydrochloride IP 30 mg
- Piroxicam IP 20 mg + Betacyclodextrin BP 100 mg
- Cetirizine Dihydrochloride IP 5 mg + Phenylephrine Hydrochloride IP 5 mg + Paracetamol IP 325 mg
- Terbinafine Hydrochloride Eq. to terbinafine USP 250 mg
- Levocetirizine Dihydrochloride IP 5 mg + Ambroxol hydrochloride IP 60 mg
- Tramdole Hydrochloride IP 50 mg + Paracetamol IP 325 mg + Domperidone IP 10 mg
- Primaquine Phosphate Eq. to Primaquine IP 15 mg
- Methylcobalamin JP 1500 mcg + Alpha Lipoic Acid USP 100 mg + Folic acid IP 1.5 mg + Thiamine Hydrochloride IP 10 mg + Pyridoxine Hydrochloride 3 mg
- Ondansetron Hydrochloride Eq. to ondansetron IP 4 mg + Omeprazole magnesium Eq. to Omeprazole USP 10 mg
- Aciclovir BP 800 mg
- Calcium Carbonate IP 1250 (from an organic source of oyster shell) IP 500 mg + Vitamin D3 IP 500 I.U.
- Risperidone BP 3 mg + Trihexyphenidyl Hydrochloride IP 2 mg
- Risperidone BP 4 mg + Trihexyphenidyl Hydrochloride IP 2 mg
- Clobazam IP 20 mg

Products

"Backbone to a Healthy Future"

Tablets Drug



- ➔ Febuxostat IP 40 mg
- ➔ Etoricoxib IP 60 mg + Thiocholchicoside IP 4 mg
- ➔ Etoricoxib IP 5 mg + Paracetamol IP 325 mg
- ➔ Levocetirizine Hemihydrate IP 200 mg + Ofloxacin IP 200 mg
- ➔ Cefpondoxime proxetil Eq. to Cefpodoxime IP 200 mg
- ➔ Cefuroxime Axetil Eq. to cefuroxime IP 125 mg
- ➔ Doxofylline IP 400 mg
- ➔ Linezolid IP 600 mg
- ➔ Ferrous Ascorbate Eq. to ele. Iron IP 100 mg + Folic acid USP 1.5 mg + Zinc sulphate Monohydrate Eq. to ele. Zinc IP 22.5 mg
- ➔ Montelukast Sodium Eq. to Montelukast IP 10 mg + Fexofenadine Hydrochloride IP 120 mg
- ➔ Minocycline Hydrochloride Eq. to Minocycline USP 50 mg
- ➔ Minocycline Hydrochloride Eq. to Minocycline USP 100 mg
- ➔ Haloperidol IP 5 mg
- ➔ Methylcobalamin JP 500 mcg + Gabapentine USP 300 mg
- ➔ Levetiracetam USP 500 mg
- ➔ Levetiracetam USP 750 mg
- ➔ Lamotrigine IP 100 mg
- ➔ Lamotrigine IP 50 mg
- ➔ Gabapentin USP 300 mg + Methylcobalamin JP 500 mcg
- ➔ Etizolam IP 0.5 mg
- ➔ Fluvoxamine Maleate IP 100 mg
- ➔ Flupenthixol Dihydrochloride Eq. to Flupenthixol BP 0.5 mg
- ➔ Flunarizine Dihydrochloride Eq. to Flunarazine BP 10 mg
- ➔ Escitalopram Oxalate Eq. to Escitalopram IP 10 mg + Clonazepam IP 0.5 mg
- ➔ Escitalopram Oxalate Eq. to Escitalopram IP 5 mg + Clonazepam IP 0.5 mg
- ➔ Escitalopram Oxalate Eq. to Escitalopram IP 10 mg
- ➔ Escitalopram Oxalate Eq. to Escitalopram IP 20 mg
- ➔ Nitrazepam IP 10 mg
- ➔ Piracetam IP 400 mg + Citicoline Sodium Equivalent to Citicoline IP 500 mg



Yaxon Biocare Pvt. Ltd.
www.yaxonbiocare.com

Products

"Backbone to a Healthy Future"

Tablets Drug

- Lorazepam IP 1.0 mg
- Lorazepam IP 2.0 mg
- Propranolol Hydrochloride IP 10 mg
- Propranolol Hydrochloride IP 20 mg
- Fluvoxamine Maleate IP 50 mg
- Sertraline Hydrochloride Eq. to sertraline IP 25 mg
- Sertraline Hydrochloride Eq. to sertraline IP 50 mg
- Risperidone BP 2 mg + Trihexyphenidyl Hydrochloride IP 2 mg
- Piracetam IP 800 mg
- Toprimate IP 50 mg
- Amisulpride IP 400 mg
- Fluvoxamine Maleate IP 100 mg
- Trifluoperazine Hydrochloride Eq. to Trifluoperazine IP 5 mg + Trihexyphenidyl Hydrochloride IP 2 mg + Chlorpromazine Hydrochloride IP 50 mg
- Pregabalin IP 75 mg
- Zolpidem Tartarate IP 5 mg
- Olanzapine IP 10 mg + Fluoxetine Hydrochloride Eq. to Fluoxetine IP 20 mg
- Olanzapine IP 10 mg
- Olanzapine IP 5 mg
- Olanzapine IP 2.5 mg
- Clozapine IP 100 mg
- Naproxen IP 250 mg
- Alprazolam IP 0.5 mg
- Alprazolam IP 0.25 mg
- Alprazolam IP 1 mg
- Chlordiazepoxide IP 10 mg
- Chlordiazepoxide IP 25 mg
- Zolpidem Tartarate IP 10 mg

Sachets Drug

- Chloecalciferol IP 60000 IU
- L-Arginine IP 3 gm

Products

“Backbone to a Healthy Future”

Capsules Drug



- Rabeprazole Sodium (as Enteric coated pellets) IP 20 mg + Domperidone (As Sustained release pellets) IP 30 mg
- Omeprazole (as Enteric coated pellets) IP 20 mg + Domperidone IP 10 mg
- Omeprazole (as Enteric coated pellets) IP 20 mg
- Omeprazole (as Enteric coated pellets) IP 20 mg + Domperidone IP 30 mg
- Lansoprazole (as enteric coated pellets) IP 30 mg
- Rabeprazole Sodium (as enteric coated pellets) IP 20 mg + Itopride Hydrochloride (as sustained release pellets) IP 150 mg
- Rabeprazole Sodium (as enteric coated pellets) IP 20 mg + Levosulpride (as sustained release pellets) IP 75 mg
- Esomeprazole Magnesium Eq. to Esomeprazole IP 20 mg (as enteric coated pellets) + Domperidone Maleate Eq. to Domperidone (as sustained release pellets) IP 30 mg
- Pantoprazole Sodium Eq. to Pantoprazole (As Enteric coated Pellets) IP 40 mg + Domperidone (as sustained release pellets) IP 30 mg
- Pregabalin IP 75 mg + Methylcobalamin IP 500 mcg
- Pregabalin IP 150 mg + Methylcobalamin IP 500 mcg
- Aceclofenac (as Sustained release pellets) IP 200 mg + Rabeprazole Sodium (as Enteric coated pellets) IP 10 mg
- Aceclofenac (as Sustained release pellets) IP 200 mg + Rabeprazole Sodium (as Enteric coated pellets) IP 20 mg
- Pantoprazole Sodium Eq. to Pantoprazole (As Enteric coated Pellets) IP 40 mg + Domperidone (As Sustained release pellets) 30 mg
- Acebrophylline IP 100 mg
- Decrabeprazole Sodium (as enteric coated pellets) IP 10 mg + Domperidone Maleate Eq. to Domperidone IP 30 mg
- Clindamycin Hydrochloride Eq. To clindamycin IP 300 mg
- Isotretinoin USP 20 mg
- Aciclovir BP 800 mg
- Vitamin k2 7 45mcg + Calcitriol IP 0. 2 mcg Calcium Carbonate IP 625 mg Eq. to elemental Calcium 250 mg
- Chlecalciferol (vitamin D3) IP 60000 I.U.
- Calcitriol IP 0.25 mcg + Calcium Carbonate IP 500 mg Eq. to elemental Calcium 200 mg + Zinc (as Zinc sulphate monohydrate 7.5 mg
- Folic acid IP 5 mg + Docosahexaenoic acid IP 200 mg
- Coenzyme-Q10 USP 100 mg + Eicosapentaenoic acid 90 mg + Docosahexaenoic acid 60 mg + L-Arginine 100 mg + Selenium Dioxide Monohydrate Eq. to elemental Selenium IP 100 mcg
- Cefuroxime Axetil IP 125 mg + Potassium Clavulanate Diluted Eq. To Clavulanic Acid IP 31.25 mg
- Amoxicillin IP 125 mg



Yaxon Biocare Pvt. Ltd.
www.yaxonbiocare.com

Products

“Backbone to a Healthy Future”

Dry Syrup Drug

- ➡ Amoxycillin IP 200 mg + Potassium Clavulanate Diluted Eq. To Clavulanic Acid IP 28.5 mg
- ➡ Cefixime Eq. to Anhydrous Cefixime IP 50 mg
- ➡ Cefixime Eq. to Anhydrous Cefixime IP 50 mg + Potassium Clavulanate Diluted Eq. To Clavulanic Acid IP 31.25 mg
- ➡ Cefpodoximeproxetil Eq. to Cefpodoxime IP 50 mg
- ➡ Cefpodoximeproxetil Eq. to Cefpodoxime IP 50 mg + Potassium Clavulanate Diluted Eq. To Clavulanic Acid IP 31.25 mg
- ➡ Cefixime Eq. to Anhydrous Cefixime IP 100 mg
- ➡ Cefpodoximeproxetil Eq. to Cefpodoxime IP 100 mg
- ➡ Cephalexin Eq. to Anhydrous Cephalexin IP 125 mg
- ➡ Clarithromycin IP 125 mg

Ointment & Cream

- ➡ Diclofenac Diethylamine BP 1.16%w/w Eq. to Diclofenac Sodium 1%w/w + Linseed oil IP 3%w/w + Methyl salicylate IP 10%w/w + Menthol 5%w/w + Benzyl Alcohol (as Preservative) 1%w/w
- ➡ Hydroquinone USP 2%w/w + Tretinoin USP 0.025%w/w + Mometasone Furoate IP 0.1%w/w
- ➡ Sucralfate USP 70 mg + Metronidazole IP 10 mg + Providone IP 50 mg
- ➡ Fusidic acid IP 2%w/w Cream base
- ➡ Mometasone Furoate IP 0.001%w/w Cream base
- ➡ Mupirocin IP 2%w/w Ointment base
- ➡ Povidone Iodine IP (available Iodine 0.5%w/w) Ointment base 5%w/w
- ➡ Clindamycin Phosphate USP Eq. to Clindamycin 10 mg + Adapalene IP 1 mg Gel base
- ➡ Clobetasol Propionate IP 0.05%w/w + Calcipotriol IP 0.005%w/w Ointment base
- ➡ Permethrin IP 5%w/w Cream base
- ➡ Clobetasol Propionate IP 0.05%w/w Cream base
- ➡ Mometasone Furoate IP 0.01%w/w + Fusidic acid IP 2%w/w Cream base
- ➡ Terbinafine Hydrochloride IP 1%w/w Cream base
- ➡ Ketoconazole IP 2%w/v + Zinc Pyrithione(ZPTO) 1%w/v Lotion base
- ➡ Salicylic acid IP 2%w/v
- ➡ Chlorhexidine Gluconate Solution IP 0.2%w/v
- ➡ Tacrolimus USP 0.1%w/w Ointment base
- ➡ Tacrolimus USP 0.3%w/w Ointment base

Products

“Backbone to a Healthy Future”



Liquid Oral Drug

- Levosalbutamolsulphate Eq. to Levosalbutamol IP 1 mg + Ambroxol Hydrochloride IP 30 mg + Guaiphenesin IP 50 mg
- Salbutamol Sulphate Eq. Salbutamol IP 1 mg + Ambroxol Hydrochloride IP 15 mg + Guaiphenesin IP 50 mg + Menthol IP 1 mg
- Terbutaline Sulphate IP 1.25 mg + Ambroxol Hydrochloride IP 15 mg + Guaiphenesin IP 50 mg + Menthol IP 2.5 mg
- Terbutaline Sulphate IP 1.25 mg + Ambroxol Hydrochloride IP 30 mg + Guaiphenesin IP 50 mg + Menthol IP 2.5 mg
- Ondansetron Hydrochloride Eq.to Ondansetron IP 4 mg
- Albendazole IP 200 mg
- Magraldrate (Anhydrous) IP 400 mg + Simethicone IP 20 mg
- Sodium Picosulphate BP 5 mg
- Montelukast Sodium Eq. to Montelukast IP 4 mg + LevocetirizineDihydrochloride 2.5 mg
- Paracetamol IP 125 mg + Phenylepherine Hydrochloride 5 mg + Chlorpheniramine maleate 0.5 mg + Sodium Citrate IP 60 mg + Menthol IP 1 mg
- Ferrous Ascorbate Eq. to ele. Iron 30 mg + Folic acid IP 550 mcg
- Ferrous Ascorbate Eq. to ele. Iron 30 mg + Folic acid IP 550 mcg
- Paracetamol IP 250 mg
- Azithromycin (as dihydrate) Eq. to Azithromycin anhydrous IP 200 mg
- Deflazacort IP 6 mg
- Citicoline Sodium Eq. to Citicoline IP 500 mg + Piracetam IP 400 mg
- Ondansetron Hydrochloride Eq.to Ondansetron IP 2 mg
- Acebrophylline 50 mg
- Lactulose Concentration Eq. to Lactulose USP 10 mg Aqueous base
- Clarithromycin IP 125 mg
- Artemether IP 20 mg + Lumefantrine USP 120 mg
- Cefpodoxine Proxetil Eq. to Cefpodoxime IP 100 mg
- Cyproheptadin Hydrochloride (Anhydrous) IP 2 mg + Tricholine Citrate 275 mg
- Lycopene USP 2000 mcg + Niacinamide IP 25 mg + Pyridoxine Hydrochloride IP 1.5 mg + Cyanocobalamin IP 1 mg + Folic acid IP 100 mcg + Zinc (As Zinc Gluconate Anhydrous) USP 3 mcg + Managanese (As managanse Gluconate Anhydrous) USP 2 mcg + Selenium (As sodium Selinate) IP 35 mcg + Iodine (As potassium Iodide)USP 100 mg + Copper (As Cupric Sulfate) 100 mcg



Yaxon Biocare Pvt. Ltd.
www.yaxonbiocare.com

Cosmetic Products

"Backbone to a Healthy Future"

- ➡ **FOOT CREAM 30gm, 40gm, 60gm, 75gm, 100gm**
- ➡ **SCAR CREAM 20g, 30g**
Kojic Acid, Vitamin C, Aloe Vera Extract, Wheat Germ Oil, Titanium Dioxide
- ➡ **MOISTURISING LOTION 60ml, 100ml, 120ml, 150ml, 200ml, 250ml**
Sodium Pyrolidone Carboxylic Acid, Vitamin E, Cyclomethicone, Dimethicone, Allantoin
- ➡ **MOISTURISING CREAM 30g, 40g, 60g, 75g, 100g**
Urea, Lactic Acid, Aloe Vera Extract, Allantoin, Glycerin, Vitamin E, Almond Oil
- ➡ Octyl Methoxy Cinnamate, Avobenzone, Sulisobenzene, Zinc Oxide, Vitamin E **Cream With Zinc**
- ➡ **FAIRNESS CREAM 30g, 40g, 60g, 75g, 100g**
Undecylenoyl Phenylalanine, Sodium Palmitoylproline, Water Lily Extract, Wheat Germ Oil, Cyclomethicone, Dimethicone
- ➡ **NEEM & HONEY FACE WASH 50 ml, 80 ml, 100 ml, 150 ml**
Neem Extract, Honey, Allantoin, Lactic Acid, Glycerin
- ➡ **STRAWBERRY FACE WASH 50 ml, 80 ml, 100 ml, 150 ml**
Strawberry, Extract. Aloevera, Extract, Allantoin, Lactic Acid, Glycerin
- ➡ **ANTI AGEING CREAM 40g, 60g, 100g, 200g**
Coenzyme Q10, Vitamin E, Aloe vera Extract, Wheat Germ Oil
- ➡ **DEPIGMENTATION CREAM 20g, 30g**
Kojic Acid, Vitamin C, Aloe Vera Extract, Wheat Germ Oil, Titanium Dioxide
- ➡ Undecylenoyl Phenylalanine, Sodium Palmitoilproline, Water Lily Extract, Wheat Germ Oil **CREAM 10g, 500g, 1000g**
- ➡ Tea Tree Oil, Bio Polymer **SHAMPOO 60 ml , 80 ml , 100 ml , 120 ml , 150 ml**
- ➡ **ALOEVERA CREAM 60g, 80g, 100g, 120g, 150g**
Vitamin A, Vitamin E, Aloe Vera Extract, Wheat Germ Oil
- ➡ **SUNSCREEN CREAM SPF30 30g, 60g, 75g, 100g**
Octyl Methoxy Cinnamate, Avobenzone, Sulisobenzene, Zinc Oxide, Vitamin E
- ➡ **SCAR GEL 10g, 20g, 30g, 40g, 60g, 75g**
Onion Extract, Glycerin
- ➡ **BRIGHTENING CREAM 5g, 10g, 15g, 20g, 30g, 40g**
Kojic Acid, Dipalmitate, Magnesium Ascorbyl Phosphate, Aloe Vera Extract, Wheat Germ Oil, Titanium Dioxide

Cosmetic Products

“Backbone to a Healthy Future”



- ➔ **SCAR PLUS CREAM 5g, 10g, 15g, 20g, 30g, 40g**
Kojic Acid Dipalmitate, Magnesium Ascorbyl Phosphate, Aloe Vera Extract, Wheat Germ Oil, Titanium Dioxide
- ➔ Undecylenoyl Phenylalanine, Sodium Palmitoilproline, Water Lily Extract, Wheat Germ Oil **CREAM 10g, 40g, 60g, 100g**
- ➔ **CLEANSER 10g, 60g, 70g, 100g, 150g**
Aloe Vera Extract, Vitamin E
- ➔ Kojic Acid Dipalmitate, Magnesium Ascorbyl Phosphate, Vitamin K, Wheat Germ Oil, Aloe Vera Extract **CREAM 10g, 20g, 30g**
- ➔ Sodium Pyrolidone Carboxylic Acid, Vitamin E **LOTION 10ml, 60ml, 100ml, 120ml, 150ml**
- ➔ Salicylic Acid, Vitamin E, Aloe Vera Extract, Tea Tree Oil, Glycerin, Clove Oil, Glycine Vectorised with Cinnamon Extract **GEL 10g, 30g, 40g, 60g, 100g**
- ➔ Zinc Oxide, Cyclomethicone, Neem Extract **CREAM 30g, 40g, 60g, 100g**
- ➔ Zinc Pyrithione, Kertyol-S, Bio Polymer, Tea Tree Oil **SHAMPOO 10 ml, 60 ml, 80 ml, 100 ml, 120 ml, 150 ml**
- ➔ **LIP CARE BALM 5g, 10g, 15g, 20g, 30g**
Light Liquid Paraffin, White petroleum jelly, Cyclomethicone, Vitamin E, Shea Butter, Castor Oil, Almond oil
- ➔ Sodium Pyrolidone Carboxylic Acid, Vitamin E **LOTION 10ml, 60ml, 75ml, 100ml, 150ml**
- ➔ Urea, Lactic acid, White petroleum jelly, Cyclomethicone, Menthol **CREAM 10g, 30g, 40g, 50g, 60g, 100g**
- ➔ **SUNSCREEN CREAM SPF30 30g, 60g, 75g, 100g**
Octyl Methoxy Cinnamate, Avobenzone, Oxybenzone, Zinc Oxide, Vitamin E, Stearic Acid, Glyceryl Mono Stearate
- ➔ **FACE WASH GEL 10g, 40g, 50g, 75g, 100g, 150g**
Glycolic Acid, Aloe Vera Extract, Vitamin E, Glycerin
- ➔ **HAND CLEANSER 25ml, 50ml, 60ml, 90ml, 100ml, 500ml, 1000ml, 5000ml**
Aloe Vera Extract, Propylene Glycol, Ethyl Alcohol
- ➔ Amodimethicone, Biotin, Bhringraj Extract, Henna Extract, Sodium Lauryl Ether Sulphate **SHAMPOO ENRICH WITH BIOTIN 40ML, 60ML, 80ML, 100ML, 120ML, 150ML, 200ML**
- ➔ **SHADOW CREAM 10g, 40g, 60g, 75g, 500g, 1kg, 2kg, 4kg, 5kg**
Octyl Methoxy Cinnamate, Avobenzone, Sulisobenzene, Micronized Zinc Oxide, Vitamin E Acetate
- ➔ **HEENA SHAMPOO 5ml, 10ml, 50 ml, 80 ml, 100 ml, 150 ml, 1000ml, 5000ml**
Amodimethicone, Polyquaternium 7, Henna Extract



Yaxon Biocare Pvt. Ltd.
www.yaxonbiocare.com

Cosmetic Products

“Backbone to a Healthy Future”

- ➔ **SUNSCREEN GEL SPF-30 10g, 40g, 60g, 75g, 100g, 120g, 500g, 1000g**
Carbomer, Methylparaben Sodium, Propylparaben Sodium, Ethylenediamine Tetra Acetate, Octocrylene, Octyl Methoxy Cinnamate, Vitamin - E acetate
- ➔ **SKIN TONER 30ML, 40ML, 60ML, 100ML**
Propylene Glycol, Rose water, Aloe vera Extract
- ➔ Menthol, Camphor, Light Green SF (C.I No. 42095), Til Oil, Bhoringraj Extract, Brahmi Extract, Amla Extract, Aloe Vera Extract
HAIR OIL 5ML, 10ML, 50ML, 80ML, 100ML, 150ML, 200ML, 500ML, 1000ML
- ➔ **EXTRA MOISTURIZING LOTION 10ml, 60ml, 100ml, 120ml, 150ml**
Glycerin, Vitamin E Acetate, Cyclomethicone, Dimethicone, Allantoin, Light Liquid Paraffin, Aloe Vera Extract
- ➔ Kojic Acid Dipalmitate, Palmitoil Tetrapeptide, Vitamin K, Kinetin, Aloe Vera Extract, Cyclomethicone
CREAM 5g, 10 g, 15 g, 20 g, 30 g, 40g
- ➔ **FACE WASH GEL 50 ml, 60 ml, 80 ml, 100 ml, 150 ml**
Aloe Vera Extract, Allantoin, Glycolic Acid, Glycerin, Sodium Lauryl Ether Sulphate, Vitamin E
- ➔ **HAIR CONDITIONER 30ml, 40ml, 60ml, 100ml, 150ml, 200ml**
D panthenol, Soya Protein, Aloe Vera Extract, Cyclopentasiloxane
- ➔ **CRETON CREAM 10g, 30g, 40g, 60g, 75g, 100g, 120g, 150g**
Kojic Acid Dipalmitate, Vitamin E Acetate, Aloe Vera Extract, Folic Acid, Cyclomethicone, Octyl Methoxy Cinnamate, Vitamin B3, Glycerin, 4-Butylresorcinol
- ➔ **SHEA BUTTER CREAM 10 g, 50 g, 75 g, 100 g, 150 g, 200 g, 250 g, 500 g, 1000 g**
Shea Butter, Vitamin A, Vitamin E Acetate, Onion Extract (Aqueous Ext.), Olive Oil, Saccharide Isomerate., Dimethicone
- ➔ **GLOW PACK 10 gm, 15 gm, 20 gm, 40 gm, 60 gm, 100 gm, 200 gm**
Glycerin, Lactic Acid, Zinc Oxide, Cucumber Extract., Strawberry Extract, Dimethicone
- ➔ **GLOW SCRUB 10 gm, 15 gm, 20 gm, 40 gm, 60 gm, 100 gm, 200 gm**
Cucumber Extract, Strawberry Extract
- ➔ **CLEANSING MILK 10 ml, 15 ml, 20 ml, 40 ml, 60 ml, 100 ml, 200 ml**
Shea Butter, Soya Protein, Allantoin, Honey, Dimethicone, Vitamin E Acetate
- ➔ **FIDELIA LOTION 5 ml, 10 ml, 50 ml, 80 ml, 100 ml, 150 ml, 200 ml, 250 ml, 500 ml, 1000 ml**
- ➔ Pink Bark Extract (Aquoua Ext.), Vitamin B3, Vitamin E, Onion Extract (Aquoua Ext.), Almond Oil, Honey, Dimethicone, Osmogeline, Aloe Vera Extract **Cream 10g, 20g, 30g, 40g, 60g, 75g**
- ➔ **DARK CIRCLE CREAM 5g, 10 g, 15 g, 20 g, 30 g, 40g**
Kojic Acid Dipalmitate, Palmitoil Tetrapeptide, Vitamin K, Saccharomyces & Rhodiola Ext., Aloe Vera Extract
- ➔ **GLOW & WHITE FACE WASH GEL 50 g, 60 g, 80 g, 100 g, 150 g**
Aloe Vera Extract, Glycerin, Vitamin E Acetate, Strawberry Extract
- ➔ **GLOW & WHITE FORTE CREAM 10g, 30g, 40g, 60g, 75g, 100g, 120g, 150g**
Vitamin E Acetate, Aloe Vera Extract, Glycerin, Mulberry Extract

Cosmetic Products

"Backbone to a Healthy Future"



- ➔ **STRECH MARKS REMOVAL CREAM** 10 g, 50 g, 75 g, 100 g, 150 g, 200 g, 250 g, 500 g, 1000 g
Shea Butter, Vitamin A, Vitamin E Acetate, Onion Extract (Aqueous Ext.), Olive Oil, Saccharide Isomerate., Dimethicone, Aloe Vera Extract
- ➔ **UV SUNSCREEN GEL SPF-30** 10 g, 40 g, 60 g, 75g, 100 g, 120 g, 500 g, 1000 g
Vitamin - E acetate, Avobenzene, Chamomile Extract, Micronized Zinc Oxide
- ➔ **MASSAGE CREAM** 10gm, 15gm, 20gm, 40gm, 60gm, 100gm, 200gm
Glycerin, Lactic Acid, Borax, Butylated Hydroxytoluene, Dimethicone, Vitamin E Acetate, Almond Oil
- ➔ **Under Eye Cream** 5 g, 10g, 15g, 20g, 30g, 40g, 50g, 60g
PEG-6 Isostearate, Hesperetin Laurate, Arbutin, Vitamin K, Vitamin - E acetate, Green Tea Extract (Aqous Extract), Almond Oil, Glycerin, Cucumber Extract (Aqous Ext.), Light Liquid Paraffin
- ➔ Vitamin - E Acetate, Aloe Vera Extract **MOISTURISING LOTION**
10ML, 50ML, 75ML, 80ML, 100ML, 150ML, 500ML, 1000ML
- ➔ Shea Butter, Vitamin A, Vitamin - E Acetate, Bramhi Extract (Auuous Ext.), Olive Oil, Saccharide Isometate, Dimethicone, Aloe Vera Extract **LOTION** 10g, 50g, 75g, 100g, 150g, 200g, 250g, 500g, 1000g





Yaxon Biocare Pvt. Ltd.
www.yaxonbiocare.com

Products

“Backbone to a Healthy Future”

Ayurvedic Tablets

- ➔ Anti Osteoarthritis & Rheumatoid Arthritis Formulation
- ➔ Blood Purification Formulation
- ➔ Calcium Supplement
- ➔ Female Health Preparation
- ➔ Liver Preparation (plain Formulation / Silymarin Formulation)
- ➔ Ginseng, Ginkgo Biloba & Garlic Tablet

Ayurvedic Capsules

- ➔ Alkalinizer (for Renal & Kidney Stone)
- ➔ Anti Allergic Prep. For Allergic Cold, Flu Syndrome & Rhinosinusitis
- ➔ Anti Allergic Prep. For Psoriasis, Eczema & Skin Infections
- ➔ Anti Bacterial Prep. For Bacterial Infections
- ➔ Anti Diabetic Preparation (for Management Of Diabetes)
- ➔ Anti Diabetic Preparation (type I Diabetes With Insulin)
- ➔ Anti Fertility (men) Formulatio For Oligospermia & Teratospermia
- ➔ Anti Inflammatory & Analgesic Preparation
- ➔ Anti Obesity Preparation (for Obesity Management)
- ➔ Anti Piles & Haemorrhoids Preparation
- ➔ Anti Thyroid Preparation For Hypothyroidism
- ➔ Anti Oxidants (for General Health & Debility)
- ➔ Blood Purifier
- ➔ Brain Booster
- ➔ Cardiac Stimulator (Heart Stimulator)
- ➔ Cissus (Hadsanghari) Form. For Osteoporosis & Osteoarthritis

Products

"Backbone to a Healthy Future"



- ➔ Enzyme Preparation (to Improve Digestion)
- ➔ Female Health Tonic (Uterine Tonic)
- ➔ Haematinic (Iron-to Improve Hb)
- ➔ Height Gain Formula
- ➔ Laxative (Anti Constipation Preparation)
- ➔ Liver Preparation (for Liver Enlargement & Jaundice)
- ➔ Menses Regulator
- ➔ Musli Preparation
- ➔ Musli Preparation
- ➔ Sex Stimulator Syrups & Suspensions

Ayurvedic Syrup & Suspensions

- ➔ Alkalininzer (for Renal & Stone)
- ➔ Antacid (delicious Mint Flavour / Sugar Free)
- ➔ Anti Diabetic Liouid (to Control Blood Sugar Level)
- ➔ Antioxidants (for General Health & Debility)
- ➔ Blood Purifier
- ➔ Brain Tonic (brain Booster)
- ➔ Anti Piles & Haemorrhoids Preparation
- ➔ Anti Thyroid Preparation For Hypothyroidism
- ➔ Anti Oxidants (for General Health & Debility)
- ➔ Blood Purifier
- ➔ Brain Booster
- ➔ Calcium Suspension



Yaxon Biocare Pvt. Ltd.
www.yaxonbiocare.com

Products

“Backbone to a Healthy Future”

- ➔ Cough Linctus
- ➔ Enzyme Preparation (Paediatric Drops) (with Dropper)
- ➔ Female Health Tonic (uterine Tonic) 200 ml., 300 ml., 450 ml.
- ➔ Female Health Tonic (uterine Tonic) With 24 Tablets
- ➔ Female Health Tonic (uterine Tonic) With 30 Capsules
- ➔ Haematinic (Iron Tonic)
- ➔ Liver Preparation
- ➔ Liver Preparation (drops) (with Dropper)
- ➔ Liver Preparation Ds. (double Strength)
- ➔ Liver Preparation With Aloe Vera
- ➔ Liver Preparation With Aloe Vera & Silymarin
- ➔ Liver Preparation With Aloe Vera & Silymarin (drops)(with Dropper)
- ➔ Liver Preparation With Aloe Vera (drops) (with Dropper)
- ➔ Pain Relieving Formula Like Orthozen Syrup

Ayurvedic Oil

- ➔ AD Baby Massage Oil (Natural Vitamin A, D & E)
- ➔ Olive Oil With Herbs
- ➔ Pain Oil (pain Relieving Oil) 10 ml., 20 ml., 30 ml., 60 ml.,
- ➔ Sex Massage Oil (for Men)
- ➔ Breast Tonner Oil

Ayurvedic Cream & Ointments

- ➔ Anti Cracks Cream
- ➔ Anti Inflammatory Ointment

Products

"Backbone to a Healthy Future"



- ➔ Anti Pimple Cream
- ➔ Mouth Ulcer Gel
- ➔ Pain Balm
- ➔ Scars Removal Cream
- ➔ Topical Preparation For Allergies & Rashes
- ➔ Vagna Cream (v-gel)
- ➔ Piles (Effective in Piles, fissure & fistula) Ointment

Nutraceutical Powders & Granules

- ➔ Anti Diabetic Granules (for Management Of Diabetes)
- ➔ Body Grow Powder
- ➔ Digestive Churan (to Improve Digestion)
- ➔ Lactation Supproting Gran. / Powder (for Lactating Mothersdo Gm
- ➔ Laxative Churan (for Constipation)
- ➔ Prickly Heat Powder (same As Dermi Cool/ Nycil)
- ➔ Protein Granules
- ➔ Protein Powder
- ➔ Vigor And Vitality Powder
- ➔ Vitality Drink (powder)
- ➔ Weight Management Formula (powder / Granules)
- ➔ Helps To Increase Milk Secretion After Delivery

*Pet Jar, Composite,
Clear Jar, Glass,
HDPC Jar*

Ayurvedic Oral Hygiene

- ➔ Medicated Toothpaste (gel Base With Potassium Nitrate & Herbs)
- ➔ Gum Paint
- ➔ Mouthwash

Ayurvedic Hair & Scalp Care

- ➔ Medicated Conditioning Shampoo
- ➔ Medicated Hair Oil

*HDPC Bottle,
Kesh King Flip Top
100 Ml Bottle Pack*



Yaxon Biocare Pvt. Ltd.
www.yaxonbiocare.com

Products

"Backbone to a Healthy Future"

Ayurvedic Cosmetics

- ➔ Fairness Cream
- ➔ Moisturizing Cream
- ➔ Neem & Aloe Vera Face Wash
- ➔ Neem & Aloe Vera Gel (for Face & Skin)

*HDPC Round Container
Lami Tube With Cap
Clear Stand
Clear Apple Jar*

Ayurvedic Soaps

- ➔ Baby Moisturizing Soap
- ➔ Beauty Soap With Aloe Vera, Neem, Kesar, Sandal, Tulsi, Olive Oil & Glycerin
- ➔ Beauty Soap With Aloe Vera, Neem, Lemon,
- ➔ Coconut, Sunflower & Glycerin
- ➔ Natural Vitamin E Soap For Oily Skin
- ➔ Sulphur Soap To Treat Allergic Disorders

*Opaque Bar
With
Outer Carton*

Nutritional Malts

- ➔ Malt (nutritional Supplement (tonic) For All Age Groups)

Ayurvedic Juices

- ➔ Aloe Vera Juice With Amla, Shankpushpi, Tulsi & Brahmi
- ➔ Amla Juice With Tulsi, Ashwagandha, Shatawar & Giloy
- ➔ Giloy Ras With Tulsi
- ➔ Jamun Karela Juice With Neem, Gudmar & Methi
- ➔ Lauki Ras With Tulsi And Pudina
- ➔ Neem Ras With Elaichi, Tulsi And Aloe Vera
- ➔ Noni Juice With Brahmi & Ashwagandha
- ➔ Triphala Juice With Aloe Vera
- ➔ Triphala Juice With Tulsi & Giloy
- ➔ Amla Aloevera With Mukta Pisti & Panch Tulsi
- ➔ Punch Tulsi With Benefits of Elaichi
- ➔ Slim And Fit Juice For Locking Slim
- ➔ Cardio Power Juice with Lehsun, Adrak, Nimbu, Sev(Apple Vinegar) and Sudh Madhu (Honey)
- ➔ Ortho Power Juice with Salai Gugglu, Hadjod, Ashwagandha, Haldi, Lasuna, Nirgundi, Gokhru, Shatavari, Methi and Aloevera

*Round HDPE
Clear, Amber Pond
HDPE Cane Bottle
With Handle*

**Berberine - 475 mg, Purslane - 180 mg, Gymnema sylvestre - 200 mg, Banaba leaf - 3 mg,
Vitamins & Mineral Tablet/Softgel - Antidiabetic**

Berberine: Berberine is a safe, potent oral hypoglycemic (blood sugar lowering) agent with modest effect on lipid metabolism, blood pressure and weight. It stimulates the uptake of glucose into The cells, improves insulin sensitivity & reduces glucose production in the liver. In a study with metformin, berberine exhibited an identical effect in the regulation of glucose metabolism. In the regulation of lipid metabolism, berberine activity is better than metformin, Triglycerides and total cholesterol in The berberine group had decreased and were significantly lower than in The Metformin group.

Purslane: (*Portulaca oleracea*) is a plant, useful in diabetes by lowering blood sugar naturally. It increases insulin sensitivity, enhances glucose uptake into The cells & slows the transport of glucose from The intestine into The blood.

Gymnema sylvestre: Gymnema sylvestre extract derives from The leaves of a climbing plant native to the forests of central and south India. It is effective in natural treatment for diabetes. The leaves of the Gymnema sylvestre plant contain gymnemic acids, which have been shown to slow the transport of glucose from the intestines to The bloodstream. This, in turn, helps to:

- Lowers blood sugar
- Lowers hemoglobin A1c

Banaba leaf extract: Banaba leaf extract (*Lagerstroemia speciosa*), which comes from Asia, promotes glucose transport into cells, keeping blood sugar on an even keel. It can inhibit uptake (digestion and absorption) of carbohydrates to a degree, and can also aid in their deposition into cells from the blood stream (resulting in a reduction in blood sugar).

Multivitamin + Minerals:

- Improve glucose control and protect blood vessels & nerves from free radical damage
- Boost production of antimicrobial peptides & prevent from infections
- Lower levels of sorbitol that damage cells in the eyes, kidneys & nerves
- Help in manufacturing & utilization of protein, fats & carbohydrates
- Decrease insulin resistance helping to keep blood sugar levels in check

INDICATIONS

Help maintain normal blood sugar levels
In diabetic & peripheral neuropathy
Support metabolism & growth
Protect eyes, kidneys, nerves & blood vessels from damage

Natural Extracts :	
Berberine	475 mg
Gymnema sylvestre	200 mg
Purslane	180 mg
Banaba Leaf extract	3 mg
Essential Vitamins :	
Vitamin C	40 mg
Vitamin E	10 mg
Vitamin B6	2 mg
Biotin	0.3 mg
Vitamin B12	150 mcg
Vitamin D	10 mcg
Essential Minerals :	
Magnesium	20 mg





Yaxon Biocare Pvt. Ltd.
www.yaxonbiocare.com

“Backbone to a Healthy Future”

Soya Protein, Milk Powder, Green Tea, Garcinia Cambogia, Caralluma fimbriata, Biotin, Amino Acids, Vitamins & Minerals Sachet

This sachet consists of Soya protein and Natural extracts having slimming properties alongwith Multivitamin, Multimineral and Amino acids to fulfil body's nutritional needs.

Soy protein is low-fat sources of high-quality protein (compared to many other protein sources) that can help you build lean muscle mass, When combined with exercise and a healthy diet, soy protein makes an excellent "partner" in a successful weight loss plan.

Soy protein helps you feel fuller longer: Eating soy may work by causing your stomach to send an "I'm full" messages to your brain. This helps reduce the urge to snack between meals and late at night two major causes of weight gain.

“Soy protein is low-carb” As a naturally low-carb food, Soy is the perfect supplement to any weight loss plan, including popular “low-carb” & “high-protein” diets.

Soy protein has a “low-glycemic index”: Soy protein has a low-glycemic index which means it won't cause a rapid rise in blood sugar levels after consumption. This prevents over secretion of insulin (insulin causes the unwanted effect of storing extra sugar in your bloodstream as body fat). Stable blood sugar and insulin levels mean fewer hunger cravings and fewer calories being stored as fat.

Milk powder is added to mask the off- flavour of Soy-protein without altering its functional performance.

Garcinia cambogia is a popular weight loss supplement, Hydroxycitric Acid (HCA) is the active ingredient in Garcinia cambogia. It has been shown to affect appetite & weight regulation in two ways:

1.Fat Production: It blocks the fat-producing enzyme Citrate lyase. This makes it harder for the body to produce fat.

2.Cravings: It increases levels of the hormone serotonin in the brain. This can lead to reduced' appetite and fewer cravings. It also lowers cholesterol and triglycerides, reduces inflammation-.and improves antioxidant status.

Caralluma fimbriata is a succulent plant that is very effective appetite suppressing properties. Ghrelin is a well-known **hunger hormone** that we experience the first thing in the morning that signals the body that it's time to eat and nourish the body, Unfortunately, when ghrelin levels are up, they can trigger cravings for unhealthy foods such as sodium-rich carbohydrate-based snacks that will not only raise your blood pressure, but also add unwanted pounds.

Green tea is the healthiest beverage on the planet. The main antioxidant in tea, EGCG, can help inhibit an enzyme that breaks down the hormone norepinephrine. When this enzyme is inhibited, the amount of norepinephrine increases. This hormone is used by the nervous system as a signal to the fat cells, telling them to break down fat.

Caffeine and EGCG (both found naturally in green tea) may actually have a synergistic effect, because caffeine enhances another step in the same pathway.

The end result is that the fat cell breaks down more fat, which is released into the bloodstream & becomes available for use as energy by cells that need it, like muscle cells.

It also Contains

Vitamins - C, B1, B2, B3, B6, B9, B12, D3, E, Inositol, Calcium pantothenate,

Minerals - Iron, Zinc, Potassium, Chloride, Calcium, Manganese, Phosphorus, Silicon, Copper, Boron, Nickel, Iodine, Selenium, Vanadium, Tin, Chromium Picolinate

Amino Acids - Methionine, Glutamic acid, L-Lysine, L-Carnitine L- Tartrate & L- Cysteine



L-Glutathione - 500 mg + Combinations Tablet /Sachet

This combination of L-Glutathione and alpha lipoic acid is beneficial for skin health. L-Glutathione (in reduced form) with an antioxidant in the latest combination in India, which is more effective and safe compared to other whitening pills. To further complement glutathione activity, Vitamin C (1000 mg) is added. It is 100% pure, no fillers or additives.

L-Glutathione is an extremely important cell protectant. It directly quenches

- Reactive hydroxyl free radicals
- Other oxygen-centered free radicals
- Radical centers on DNA & other biomolecules

Alpha Lipoic acid is a coenzyme that is a very potent antioxidant. It also raises the level of glutathione in the body.

Grape Seed Extract, a mixture of tannin and procyanidins, is a great reservoir of natural antioxidants such as vitamin E and flavones.

Vitamin C keeps skin well-toned. It is the one that protects the skin texture from getting damaged & protects against aging. With age, more Vitamin C is essential to maintain elasticity.

Vitamin E restores moisture to skin & slows the aging of the skin cells. It also acts as an antioxidant that protects the skin from free radicals.

INDICATIONS

- Nourishes skin
- Anti acne
- Removes blemishes & pigmentations
- Lightens dark spots
- Anti-ageing & Anti-wrinkle
- Prevents/Removes pimple or pimple marks
- Helps the skin to stay supple, smooth & radiant

Natural Extract :	
Grape Seed Extract	50 mg
Alpha Lipoic Acid	50 mg
Essential Amino Acid :	
L- Glutathione	500 mg
Essential Vitamins :	
Vitamin C	40 mg
Vitamin E	10 mg



Ginseng, Ginkgo Biloba, Garcinia Cambogia, Green Tea, Ginger, Garlic, Lycopence, Citrus Bioflavonoids, Multivitamin, Multimineral & Amino Acid Tablet

Our combination includes:

Water soluble and fat soluble vitamins -These are essential for the normal growth and development of a multicellular organism.

Minerals - These are necessary for three main reasons: building strong bones and teeth, controlling body fluids inside and outside cells and turning the food you eat into energy.

Lycopene (also known as psi-carotene), a carotenoid is used to prevent heart disease, atherosclerosis (hardening of the arteries) asthma and cataract.

Amino acids have an influence on the function of organs, glands, tendons and arteries, for healing wounds and repairing tissue as well as for the removal of all kinds of waste deposits produced in connection with the metabolism.

Garcinia cambogia: It is labeled as a 'super fruit' which is used for weight loss but there are more health benefits also. Garcinia can also promote your emotional and mental well being. It also assists in health issues such as diabetes, digestive issues, heart disease, high cholesterol and ulcers.

Ginseng: It is believed to restore and enhance normal well being.

The main active agents in Panax ginseng are ginsenosides.

Ginkgo Bioba: It is a powerful antioxidant, containing mainly, ginkgolides & heteroside.

Green Tea Extract: A green tea extract containing antioxidants ingredients green tea catechins (GTC) is loaded with antioxidants & nutrients that have powerful effects on the body.

Garlic Powder: It is antioxidants rich herb, which helps to destroy free radicals - particles that can damage cell membranes & DNA.

Ginger: It is a great remedy for treating stomach issues, diarrhea, cholera, toothaches, bleeding, rheumatism, joint pain, nausea, motion sickness, certain cardiovascular problems. cold & cough.

INDICATIONS

- Energy production
- Effective in cardiovascular
- diseases
- Pernicious anemia
- Strengthens the immune system
- For rheumatoid arthritis & osteoarthritis
- Effective in neurodegenerative diseases
- Effective in diabetes

Natural Extract :	
Ginseng extract powder	21.25 mg
Ginkgo biloba extract	20 mg
Gracinia Cambogia	15 mg
Citrus Bioflavonoids	12.5 mg
Green Tea extract	10 mg
Ginger	10 mg
Garlic Powder	2 mg
Lycopene 10 % dispersion	2 mg

Essential Amino - Acids	
Methionine	22 mg
Gultamine Acid	20 mg
L-Lysine	10 mg
L-Carnitine L-Tratate	2.5 mg
L-Cysteins	2.5 mg

Essential Vitamins	
Niacinamide	15 mg
Vitamin C	12.5 mg
Vitamin E	10 mg
Choline bitartrate	10 mg
Insoitol	10 mg
Calcium panthothenate	5 mg
Vitamin B1	1 mg
Vitamin B2	1 mg
Vitamin A	0.32 mg
Vitamin B6	0.5 mg
Vitamin K3	80 mcg
Folic Acid	50 mcg
Biotin	30 mcg
Vitamin D3	5 mcg
Vitamin B12	0.5 mcg

Essential Vitamins	
Niacinamide	15 mg
Vitamin C	12.5 mg
Vitamin E	10 mg
Choline bitartrate	10 mg
Insoitol	10 mg
Calcium panthothenate	5 mg
Vitamin B1	1 mg
Vitamin B2	1 mg
Vitamin A	0.32 mg
Vitamin B6	0.5 mg
Vitamin K3	80 mcg
Folic Acid	50 mcg
Biotin	30 mcg
Vitamin D3	5 mcg
Vitamin B12	0.5 mcg

**Ferrous Ascorbate-100 mg, Folic Acid-200 mcg, Zinc-7.5 mg, Vitamin D3-10 mcg,
Cyanocobalamin-1500 mcg Tablet/Softgel**

Pregnancy is a period of increased metabolic demands, with change in the woman's physiology & the requirements of a growing fetus. Nutritional require qegnancy increases for carbohydrate, vitamins and micronutrients. This combination improve al growth & develops immune system.

Ferrous ascorbate helps pregnant women to avoid having anamia sickness during pregnancy & in addition to that it also boosts the immune system of the Rather he baby. It has **high bioavailability** with **least GI side effects**.

Folic acid is vital for cell division and growth: elps to protect born baby from developing neural tube defects. Folic acid may also help to prevent other birth defects, such as a cleft palate. On mother's part, Folic acid is good too, as it works with Vitamin B12 to form healthy red blood cells.

Zinc is essential for many functions, including **growth** & neurobehavioral development, immune & **sensoryfunctions**.

Cyanocobalamin helps in the production of red and white blood cells, the regeneration of RNA & DNA, the conversion of fats, carbohydrate, & protein to energy, & maintenance of a normal fgastrointestinal tract. It **together with folic-acid** is important in early pregnancy to **prevent neural tube defects**.

INDICATIONS

- It is indicated in prophylaxis of iron deficiency especially when inadequate diet calls for supplemetary zinc & iron during pregnancy & anemia.

Calcium Citrate Malate - 125 mg + Calcitriol - 025 mg + Vitamin D3 - 10 mcg Tablet

Calcium citrate malate is the calcium salt of citric acid and malic acid which is better-absorbed thancalcium from calcium carbonate (CaCO₃). Calcium (Ca²⁺) plays a pivotal role in the physiology and biochemistry of organisms and the cell, in signal transduction pathways, in neurotransmitter release from neurons, contraction of all muscle cell types, and fertilization. Extracellular calcium is also important for maintaining the potential difference across excitable cell membranes, as well as proper bone formation.Calcium is used to produce the minerals contained in bones, shells and teeth through a process called biomineralisation.

Calcitriol is a form of vitamin D that is used to treat and prevent low levels ot calcium in the blood of patients whose kidneys or parathyroid glands are not working normally. Low blood levels of calcium may cause bone disease. Calcitriol works by helping the body to use more of the calcium found in foods or supplements.

● INDICATIONS

- Effectivein increasing skeletal mass
- Useful in ostgoporosis
- Treatment & prevention of hypocalcemia
- Essential for bone formation
- Essential for nervous, muscular, & skeletal systems
- Treatment of hyperphosphatemia
- Useful in biomineralisation



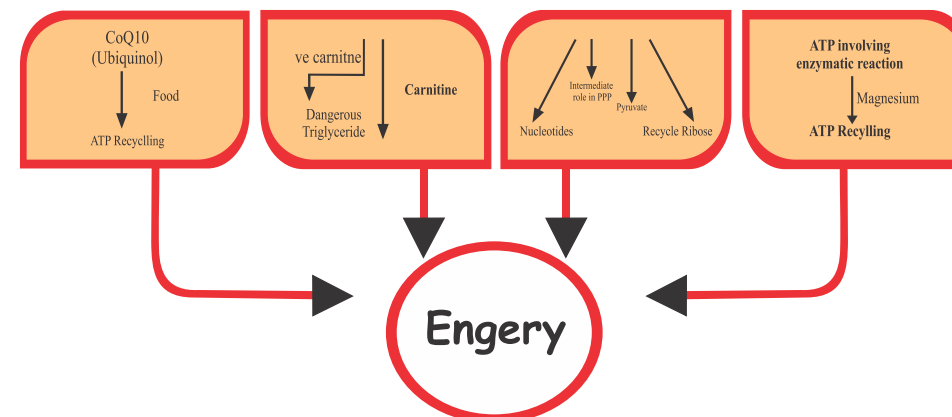
Yaxon Biocare Pvt. Ltd.
www.yaxonbiocare.com

“Backbone to a Healthy Future”

D-Ribose - 500 mg, L-Carnitine - 500 mg, Uniquinol - 50 mg, Magnesium - 50 mg
Tablet/Softgel

INDICATIONS

- Cardiomyopathy
- Muscle atrophy
- Atrial fibrillation
- Atherosclerosis
- High blood pressure
- Mitral valve prolapse
- Angina
- Arrhythmia
- Stroke
- Heart failure
- Heart attack



CoQ10 & L-carnitine are major players in The energy recycling metabolic pathways.
D-ribose is The only compound used by the body to replenish depleted energy stores & rebuild energy pools.

Magnesium is a vital mineral used by the enzymes that make energy synthesis & recycling possible.
All four of These supplements are very safe to Take long-term.

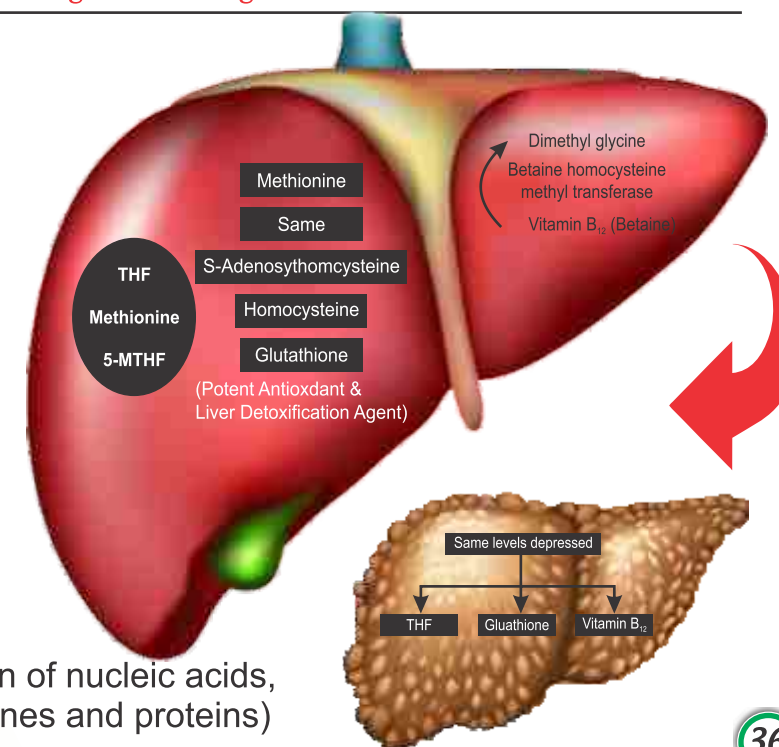
S - Adenosyl L-Methionine - 400 mg, L - 5 Methylterahydrofolate Calcium - 500 mcg,
Methylcobalamin - 500 mcg Tablet/Softgel/Sachet

CAUSES OF LIVER DISORDER

- Alcoholic liver disease
- Non-alcoholic fatty liver disease
- Intrahepatic Cholestasis
- Cholestasis in pregnancy
- Hepatitis
- Drug/Toxin induced injury

What Same has to do in Liver..

- It Influences:
 - Tissue oxidative stress
 - Mitochondrial function
 - Hepatocellular apoptosis
 - Malignant transformation
- Principle methyl donor (for methylation of nucleic acids, phospholipids, histones, biogenic amines and proteins)
- Precursor for synthesis of glutathione



**Myo - Insitol - 500 mg, Berbeine Hcl - 277.25 mg, DCI - 12.5 mg, Grape Seed Extract - 4.25 mg,
Chromium Picolinate - 201.5 mcg, L- Methylfolate - 45 mcg & Vitamin D3-90 IU Tablet**

This is a dietary supplement for women That help to manage PCOS and support fertility. This combination improves ovulatomenstrual cyclicily and the quality of eggs. PCOS is the main cause of infertiity due to metabolic, hormonal and ovarian dysfunctions.

Myo (MYO) and D Chiro- inositol (DCI): Inositol types have been shown to improve many of the metabolic and reproductive aspects of PCOS. These benefits include improvements To cholesterol, insulin androgens and weight. **MYO** has been shown To boost fertility by improving egg quality and restoring menstrual regularity as well as reduce the risk for gestational diabetes. **DCI** reduces teslosterone levels, helps to improve insulin sensitivity, lower blood pressure, and increase the frequency of ovulation.

Berberine, mainly due to its powerful anti-inflamotory, antibiotic and androgen-inhibiting functions, up-reguiates insulin receptors, and stimulates the up take of glucose into cells, blocks testosterone production by ovarian cells, helps in alleviating metabolic disorders (obesity, hypertension, and dyslipidemia and has a beneficial effect on gut microbes. it reduces anxiety, and is excellent treatment for acne.

Grape Seed Extact (rich in flavonoids) increases blood circulation to the pelvic area, decrasesinflammation, and reduces the impact of stress on the body. The overall effect of these changes is an enhanced uterine environment the impact of stress on the body. The overall effect of these changes is an may improve glucose intolerance.

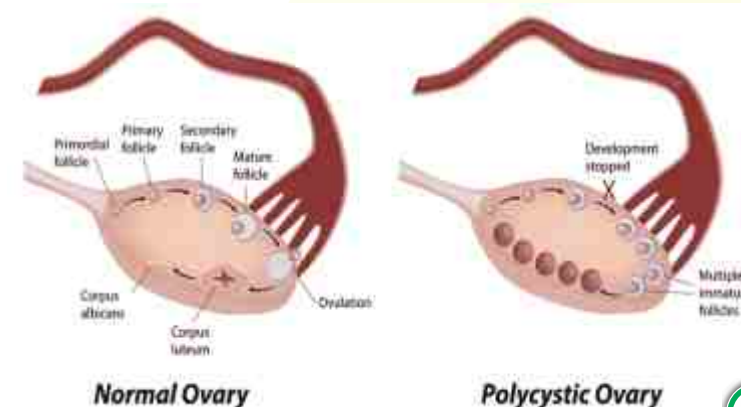
Chromium Picolinate is needed for insulin activity in carbohydrate, fat and protein metabolism. opitmal level may reduce insulin resistance improve blood suger control, and may help reduce the risk of cardiovascular disease and type -2 diabetes. Supplementation may also help to reduce triglycerides and total cholesterol while improving HDL good cholesterol.

L-Methylfolate promotes ovarian normality and smooth funcationing, may be helpful in reducing homocysteine, which is a metabolic byproduct that is too high in some PCOS woman. It may also improve pregnancy outcomes with PCOS and prevent neural tube defects.

Vitamin D₃ has also been found to be involoved in follicle egg maturation and developments. Vitamin D also plays a key role in glucose regulation, notably in decreasing insulin resistance.

INDICATIONS

- PCOS (Polycystic ovary syndrome)
- Improves Pregnancy rate
- Restores normal ovulatory activity and fertility in woman with PCOS
- Increases SHBG (Sex hormone binding globulin)
- Improves Insulin Sensitivity
- Decreases luteinizing hormone
- Induces weight loss
- Help a fat - clogged liver to unclog itself
- Relieves depression and mood disorders
- Improves appetite



S-Adenosyl-L-Methionine (Sam E) 200 / 400 mg Tablet

Enhances Mood & Neural function



Promotes Joint Comfort & Mobility



Supports Liver Health & Detoxification

it has been evidenced that S-Adenosyl-L-Methionine (Sam E) is a Nutraceutical with antioxidative stress, thus also useful in management of other conditions like Osteoarthritis, liver disorders and fibromyalgia ; as a precursor of cysteine. Same is essential for three key metabolic pathways: Transmethylation, Transsulfuration, Polyamine synthesis.

S-adenosyl L-methionine is a health supplement: plays a crucial biochemical role in the body. Same is useful in depression and Alzheimer disease. Same influences the metabolism of the brain neurotransmitters dopamine and serotonin, both of which help in controlling mood. it also crosses the nearly impenetrable barrier between the blood and the brain thus it is useful in Alzheimer disease.

Levosulpiride & Rabeprazole Capsule

Rubeprazole

It belongs to class of Proton pump inhibitor (PPIs). PPIs stop cells in the lining of the stomach from producing too much acid. Rabeprazole acts by suppressing gastric acid secretion, without anticholinergic or HZ blocking action.

Levosulpiride

It acts as Prokinetic agent which increases the tone Pharma of the lower esophageal sphincter and enhances the gastric emptying

Composition:-	
Levosulpiride (SR Pellets)	75 mg
Rabeprazole Sodium (EC Pellets)	20 mg

Collagen (Type II), Glucosamine, Chondroitin, Ginger Extract, Vitamin & Mineral Tablet

INDICATIONS

- REDUCE OSTEOARTHRITIS PAIN.
- PROMOTES CARTILAGE HEALTH.
- IMPROVE CONSISTENCY OF SYNOVIAL FLUID IN JOINT.
- HELPS TO REBULIT CARTILAGE DAMAGE.
- IMPROVE FUNCTIONING OF THE JOINTS



What is Osteoarthritis ?

***Osteoarthritis** is the most common form of the arthritis. It is a degenerative disease characterized by breakdown of the joint cartilage; causes pain, swelling, and reduced motion in joints. It can occur in any joint, but usually it affects hands, knee, hips or spine.*



Glucosamine and Chondroitin is natural component of glycoaminoglycanin cartilage & other connective tissue.

Glucosamine, Chondroitin and collagen combination acts as a nutritional supplements for people suffering from osteoarthritis or other inflammatory joint disorder by promoting cartilage health.

Vitamin K2-7 + Calcitriol + Calcium Carbonate + Boron + Zinc Tablet

OSTEOPOROSIS

Maintains Flexibility
Useful in joint pain
Useful in bone health
Increases muscle power
Increases elasticity of the joints
Maintain calcium level in baby
Maintain Integrity of the joints



This Combination is useful in improving low blood calcium levels in people who do not get enough calcium from their diets. It may be useful in conditions caused by low Calcium levels such as bone loss osteoporosis, osteomalacia/rickets & hypoparathyroidism

L-Arginine + Its Combination Sachet

DHA (Docosahexaenoic Acid) is an omega-3 fatty acid. DHA is considered the building block of the brain. During pregnancy, from the final trimester onward, DHA is taken up by the placenta and travels directly to the fetus's brain and retinal tissue.

L-Arginine is non essential amino acid. During pregnancy it helps to reduce the high blood Pressure. Folic Acid protects the unborn body from developing neural tube defects.

Folic Acid protects the unborn body from developing neural tube defects.

Proanthocyanidin is a flavonoid and antioxidant. It helps in stabilization of the collagen and elastin in the body, principle proteins used in formation of the connective tissues. Vitamin prevents morning sickness and birth defects.

L-5-Methyltetrahydrofolate Calcium 500 mcg Tablets

L-5-Methyltetrahydrofolate Calcium (L-5- MTHF-Ca) is a synthetic derivative of folic acid, the predominant, naturally occurring form of folate. Folic acid is a synthetic form of the vitamin, which is only found in fortified foods, supplements and pharmaceuticals. It lacks coenzyme activity and must be reduced to the metabolically active tetrahydrofolate form within the cell.

Increased folate intake is now recommended before and during the early stages of pregnancy, through folic acid supplements or fortified foods. further more, there is growing evidence that folic acid may have a role in the prevention of other diseases, including dementia and certain types of cancer.

*Prenatal
Care*

*Homocysteine
Management*

Benifit

Depression

Dementia

Pregnancy

*Diabetic
Neurofathy*

Cranberry + D- Mannose Tablet/Sachet

D-Mannose

D-Mannose is naturally occurring simple sugar, closely related to glucose.

D-Mannose does not kill bacteria but allows the bad bacteria to be easily flushed out of the boby with the urine

D-Mannose detaches the adhesion of pathological bacteria (E.Coli) to the tissues of theurinary tract and bladder.

Cranberry

Cranberry juice contain Proanthocyanidin, an antioxidant, which in hibites the adherence of the E. Coilfimbriac to the uroepithelial cells & adhesion of E.Coil to lining of urinary tract is the first step in developments of the UTI.



Yaxon Biocare Pvt. Ltd.
www.yaxonbiocare.com

"Backbone to a Healthy Future"

Attractive Packings



*10
Capsules
Softgel
Blister*



*10
Capsules
Softgel
Blister*



*10
Capsules
Softgel
Blister*



*10
Capsules
Softgel
Blister*

Attractive Packings



*10
Capsules
Softgel
Blister*



*15
Capsules
Softgel
Blister*



*4
Capsules
Blister*



*10
Capsules
Blister*



Yaxon Biocare Pvt. Ltd.
www.yaxonbiocare.com

"Backbone to a Healthy Future"

Attractive Packings



*10
Capsules
Hardgel
Blister*



*10
Capsules
Blister With
Perforation*



*10
Capsules
Strip*



*10
Capsules
Strip*

Attractive Packings



*15
Capsules &
Tablets
Strip*



*10
Capsules &
Tablets
Alu-Alu*



*10
Capsules &
Tablets With
Perforation*



*10
Tablets
Small
Alu-Alu*



Yaxon Biocare Pvt. Ltd.
www.yaxonbiocare.com

"Backbone to a Healthy Future"

Attractive Packings



3
Tablets
Blister



5
Tablets
Blister



6
Tablets
Blister



10
Tablets
Blister

Attractive Packings



**10
Tablets
Blister**



**10
Tablets
Blister**



**10
Tablets
Blister**



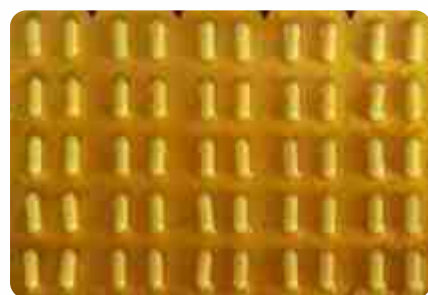
**15
Tablets
Strip
Blister**



Yaxon Biocare Pvt. Ltd.
www.yaxonbiocare.com

"A Healthy Future"

Attractive Packings



50
Tablets
Strip
Blister



10
Tablets
Ziz-Zag
Blister



10
Tablets
With
Perforation



200 ml
For ORS
Packaging

THIRD PARTY MANUFACTURING

-: PHARMACEUTICALS :-

Beta Lactum Drugs :

Tablets, Capsules & Dry Syrups Oral

Non Beta Drugs :

Tablets, Capsules, Liquids, Sachets
& Ointments

Softgels :

In Pharma with approved therapeutic
formulations

Cosmetics

-: NUTRACEUTICALS & AYURVEDIC :-

Softgels:

Prophylactic Formulations approved by
FSSAI

Tablets

Soap

Capsules

Lotion

Liquids

Sachets

Dry Syrups Oral

- ◆ The company provides 100% (Excise and Sales) Tax benefits to its customers due to its location in excise free zone valid till 2020
- ◆ Technical support is provided by various experts having more than a decade years of experience in their respective fields, The rich experience of directors provides an edge to fulfill the job assigned with quality control and proper validation
- ◆ We believe in "100% Quality Management"

ACTIVITIES

Manufacturing of specialized formulations

Creating unique and new formulations providing
comprehensive medical rationale and
product backup data



Backbone to a Healthy Future.....

For more information please, contact :



Yaxon Biocare Pvt. Ltd.

7, HSIIDC, Rai Industrial Area
Sonipat (Haryana) 131029

Vipin Satija +91-9811183447
Chiranjeev Cheema +91-9968010101
www.yaxonbiocare.com
info@yaxonbiocare.com
yaxonbiocare@gmail.com

