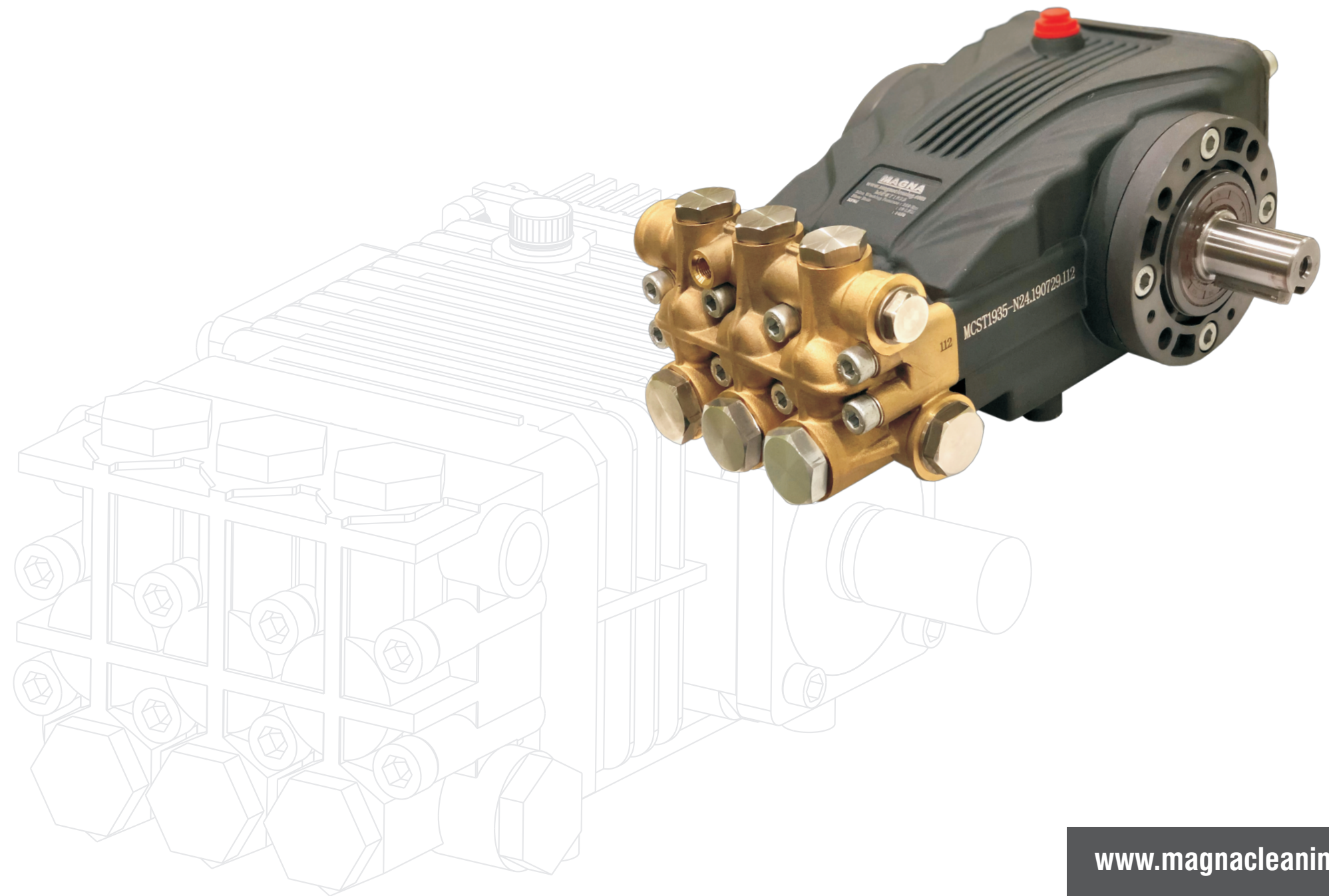


- ▲ HIGH PRESSURE PUMPS
- ▲ HIGH PRESSURE WATER JET CLEANERS
- ▲ ULTRA HIGH PRESSURE WATER BLASTERS





THE DIRECTORS OF THE COMPANY



Mr. AmalKhan A. Khalic



Mrs. Wahida AmalKhan



Mr. Mehboob Khan

Company Profile

Magna Cleaning Systems is a 20 years old company, recognized in the Indian Market for offering a broad selection of premier Heavy Duty High Pressure Water Jet Cleaners, High Pressure Hot Water & Steam Jet Cleaners, Ultra High Pressure Water Blasters and Industrial Vacuum Cleaners. We manufacture our brand of High Pressure Water Jet equipments at our factory in Navi Mumbai and these products are renowned worldwide for the highest in Quality, Efficiency and reliability.

Mr. AmalKhan A. Khalic, the founder of Magna Cleaning Systems and now the **Managing Director** of the Company, initially started as a Contracting Company, undertaking specialized Hydro jetting contracts and later in 2002 ventured in to Sales & After-Sales service of cleaning equipments. In 2009, as the company progressed, the constitution of the Company changed from Proprietorship to Private Ltd. and now we are operating in the name and style of **Magna Cleaning Systems Pvt. Ltd.** As the name suggests, we just do not sell the equipments but we also provide cleaning solutions and systems for adverse cleaning problems with maximum output in less time and with less manpower.

We provide professional and industrial cleaning equipments which are very sturdy and meant for handling tough cleaning applications.

Our Sales and Technical Staff have decades of experience in addressing and meeting the needs of customers. We pride ourselves in the Customer-first attitude throughout the company. We recognize that our commitment to you will translate into our long-term success. We have the reputation of offering our services to the client within 72 hours to any part of this country.

INDEX

Standard Pumps / Pumps with Electric Motor Flange

MG SERIES	01 & 02
MCST1935BR	02
MCSD SERIES	03 & 04
MCSTF SERIES	05
MCSPT	06
MCSHY	07 & 08

Special Pumps

Stainless Steel Pumps SS316	09
High Temperature Pumps	10

High Pressure Cold Water Jet Cleaners

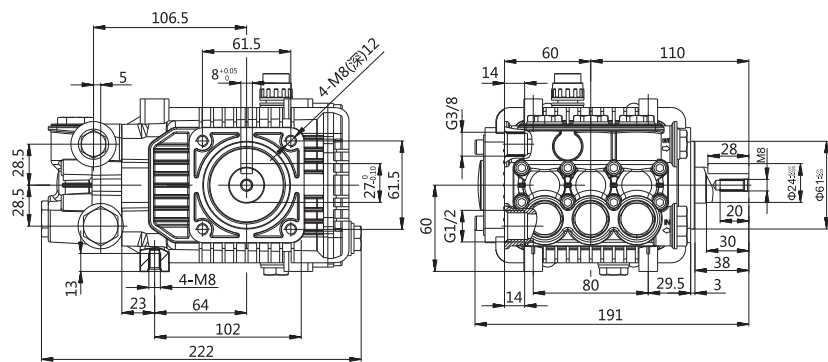
Sabrina	11	Accessories	16-21
Solid	12		
Impact	13		

High Pressure Hot Water Jet Cleaners

Darter	14
--------	----

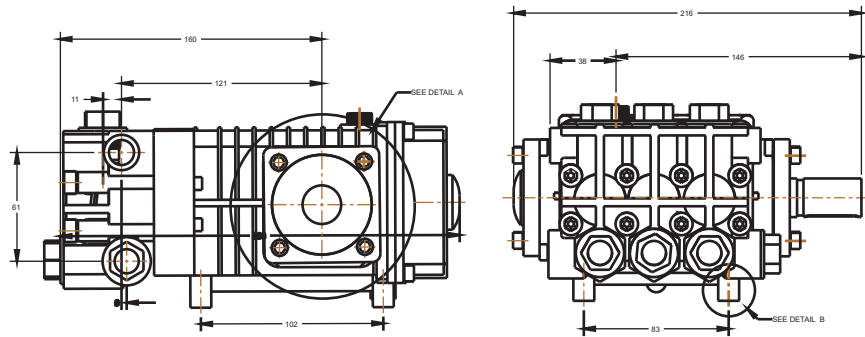
Ultra High Pressure Water Jet Cleaners

UHP	15
-----	----



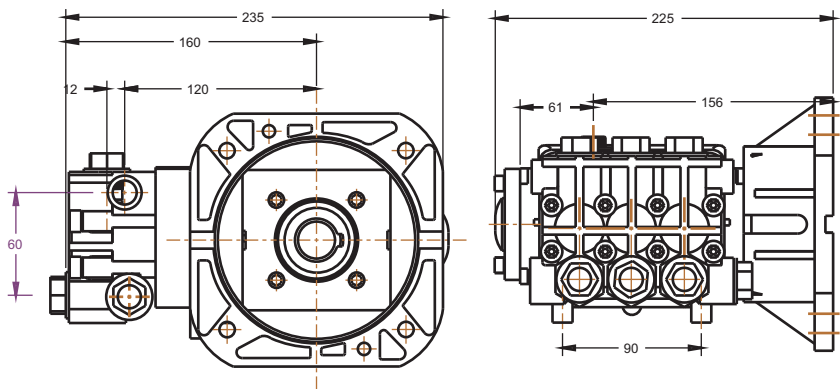
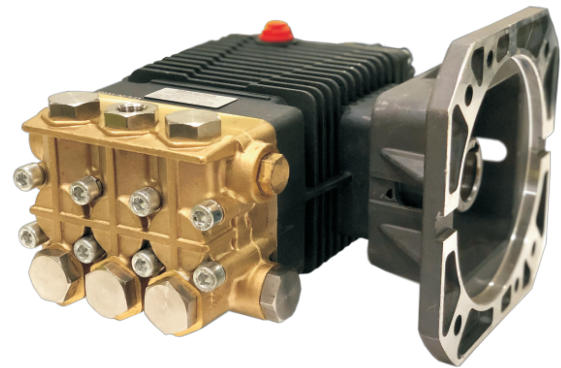
MG0818YRF Female Shaft with Flange

Model No.	Flow Rate		Max. Pressure		Shaft Ø mm	Max. Power	
	L/min	US GPM	Bar	PSI		HP	Kw
1450 RPM							
MG0818YRF	8	2.11	180	2610	24	3.6	2.7



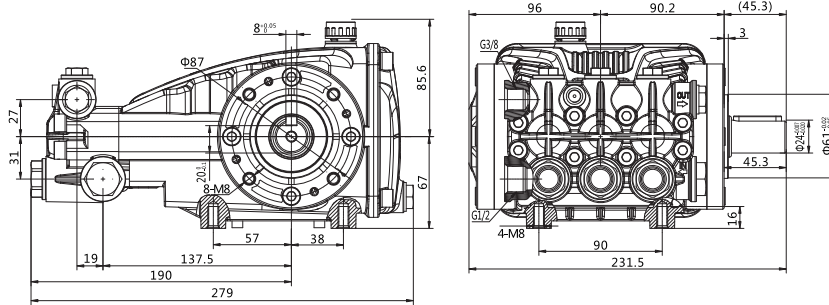
MG1525YR Solid Shaft

Model No.	Flow Rate		Max. Pressure		Shaft Ø mm	Max. Power	
	L/min	US GPM	Bar	PSI		HP	Kw
1450 RPM							
MG1525YR	15	4.0	250	3625	24	7.5	5.5



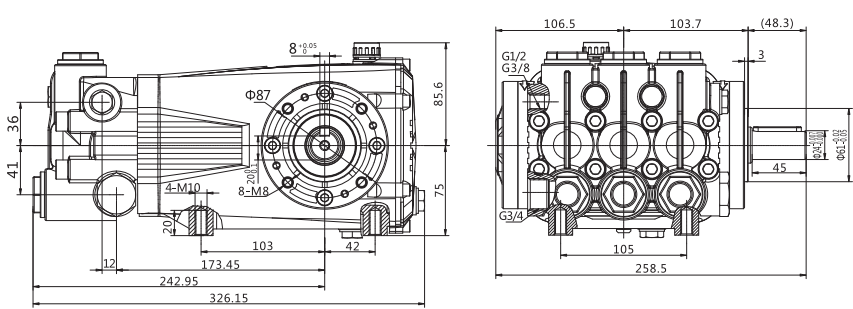
MG1525YRF Female Shaft with Flange

Model No.	Flow Rate		Max. Pressure		Shaft Ø mm	Max. Power	
	L/min	US GPM	Bar	PSI		HP	Kw
1450 RPM							
MG1525YRF	15	4.0	250	3625	28	7.5	5.5



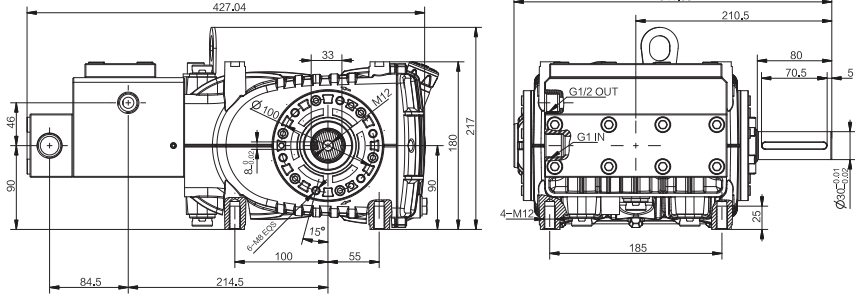
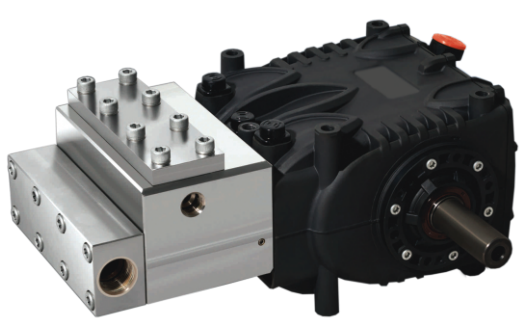
MCST1935BR Solid Shaft

Model No.	Flow Rate		Max. Pressure		Shaft Ø mm	Max. Power	
	L/min	US GPM	Bar	PSI		HP	Kw
1450 RPM							
MCST1935BR	19	5.0	350	5075	24	17	12.7



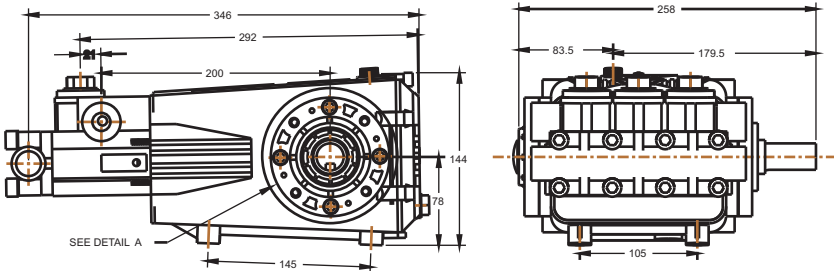
MCSD Solid Shaft

Model No.	Flow Rate		Max. Pressure		Shaft Ø mm	Max. Power	
	L/min	US GPM	Bar	PSI		HP	Kw
1450 RPM							
MCSD4020BR	40	10.5	200	2900	24	20	15
MCSD3025BR	30	7.9	250	3625	24	19	14
MCSD2135BR	21	5.5	350	5075	24	19	14



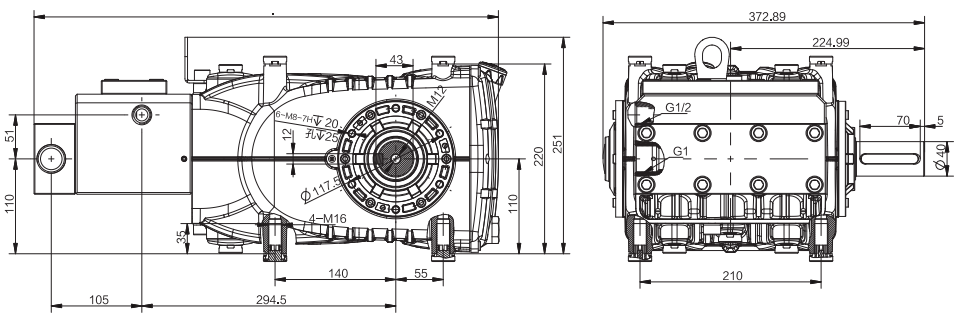
MCSDT Solid Shaft

Model No.	Flow Rate		Max. Pressure		Speed RPM	Max. Power	
	L/min	US GPM	Bar	PSI		HP	Kw
MCSDT2960BR	29	7.6	600	8700	1450	46	33.8
MCSDT5525BR	55	14.6	250	4060	1450	36.7	27



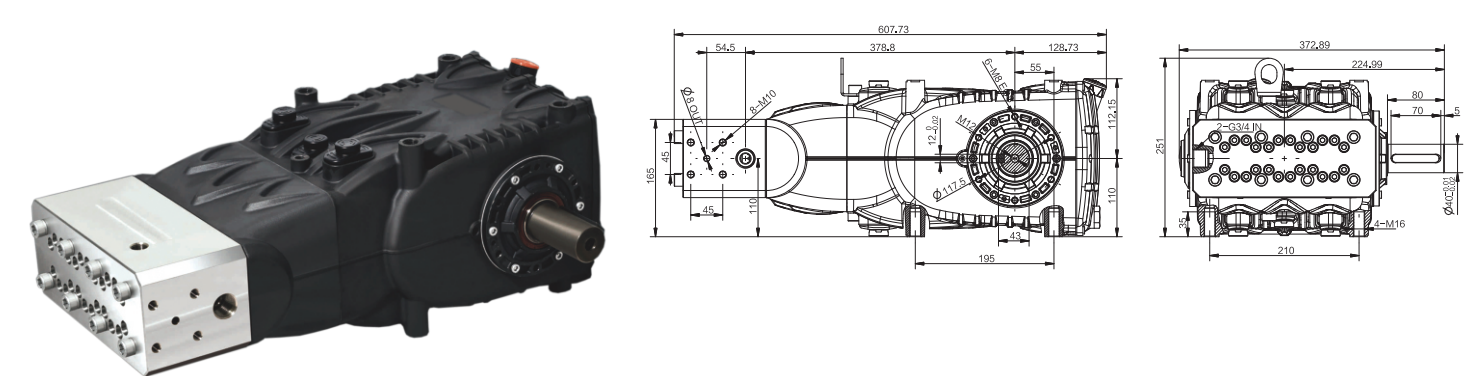
MCSD Solid Shaft

Model No.	Flow Rate		Max. Pressure		Shaft Ø mm	Max. Power	
	L/min	US GPM	Bar	PSI		HP	Kw
1450 RPM							
MCSD1650BR	16	4.2	500	7250	24	20	15
MCSD2250BR	22	5.8	500	7250	24	28.2	21



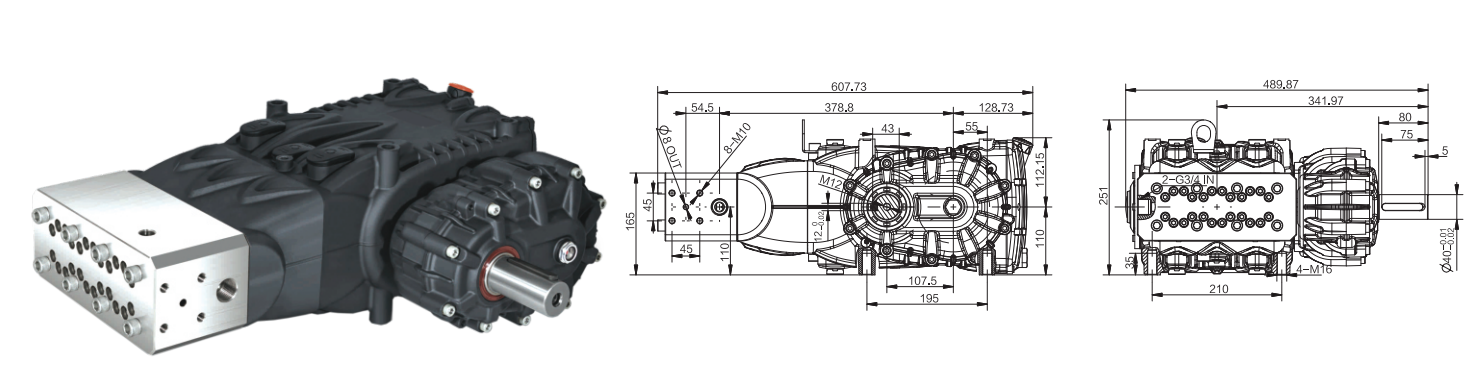
MCSDF Solid Shaft

Model No.	Flow Rate		Max. Pressure		Speed RPM	Max. Power	
	L/min	US GPM	Bar	PSI		HP	Kw
MCSDF3850BR	38	10.1	500	7250	1000	50	36.8
MCSDF5735BR	57	15.0	350	5075	1000	50	36.8
MCSDF7328BR	73	19.3	280	4060	1000	50	36.8



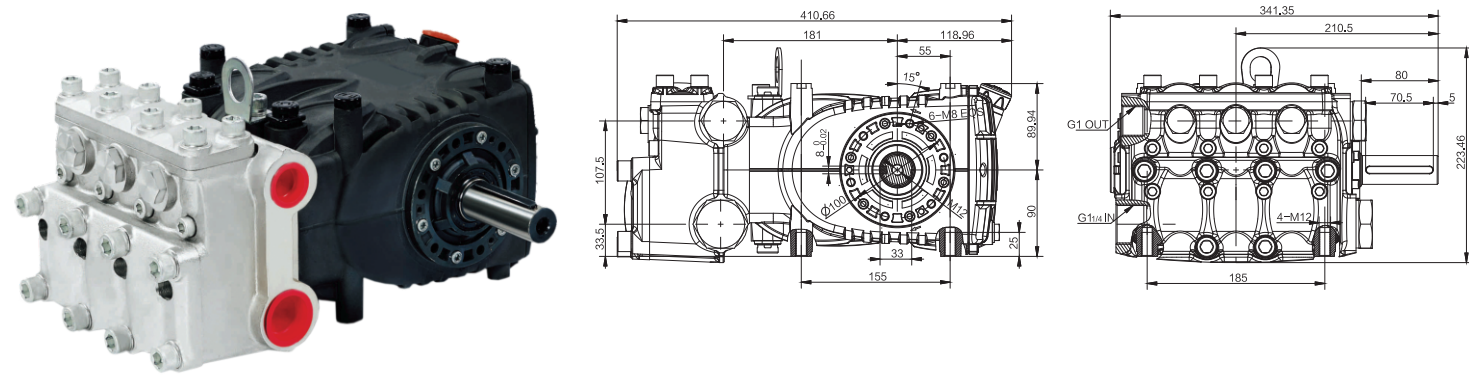
MCSTF Solid Shaft

Model No.	Flow Rate		Max. Pressure		Speed RPM	Max. Power	
	L/min	US GPM	Bar	PSI		HP	Kw
MCSTF2390BR	23	6	900	13000	1000	54	40
MCSTF1911BR	19	4.9	1100	16000	800	54	40
MCSTF1715BR	17	4.5	1500	21750	1000	69	50



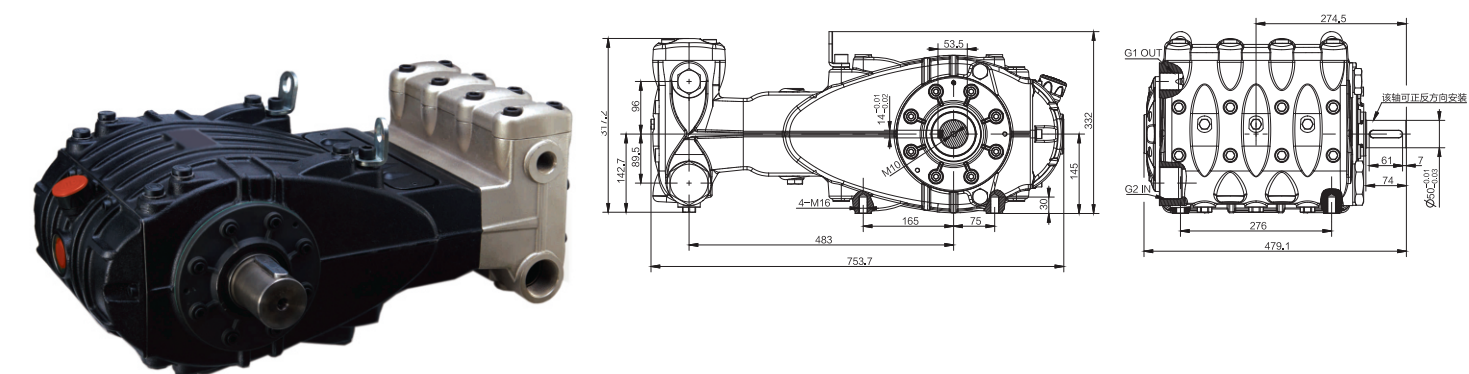
MCSTFH Solid Shaft

Model No.	Flow Rate		Max. Pressure		Speed RPM	Max. Power	
	L/min	US GPM	Bar	PSI		HP	Kw
MCSTFH2811BR	28	7.4	1100	15950	1500/1800/2200	75	55
MCSTFH2015BR	20	5.3	1500	21750	1500/1800/2200	75	55



MCSPT Solid Shaft

Model No.	Flow Rate		Max. Pressure		Speed RPM	Max. Power	
	L/min	US GPM	Bar	PSI		HP	Kw
MCSPT7020BR	70	18.4	200	2900	1450	36	26.6
MCSPT9115BR	91	24	150	2175	1450	37	27.3
MCSPT142BR	142	37.5	100	1450	1450	38	28



MCSXV Solid Shaft

Model No.	Flow Rate		Max. Pressure		Speed RPM	Max. Power	
	L/min	US GPM	Bar	PSI		HP	Kw
MCSXV168BR	168	44.9	250	3625	1000	113	83
MCSXV213BR	213	56.2	200	2900	1000	113	83
MCSXV263BR	263	69.5	160	2320	1000	113	83
MCSXV333BR	333	88	100	1450	1000	88	65



MCSHY

Model No.	Flow Rate		Max. Pressure		Speed RPM	Max. Power	
	L/min	US GPM	Bar	PSI		HP	Kw
MCS7880HY	78	20.6	800	11600	470	160	120

Technical Specifications:

- Fluid end material: High quality stainless steel.
- Cylinder material: High quality stainless steel.
- Plunger: Solid ceramic plunger, Dia : 28 mm, Speed : 1.08 m/s
- Pump Stroke: 90 mm,
- Pump Shaft Speed : 470 rpm
- Rod force: 54KN
- Conversion efficiency: 90-96%
- Force-cooler
- Force feed lubrication system
- Force oil cooling system
- Pressure control valve: 1000bar manual type
- Safety valve: 10% of max. pressure
- Pressure gauge: 200 Mpa

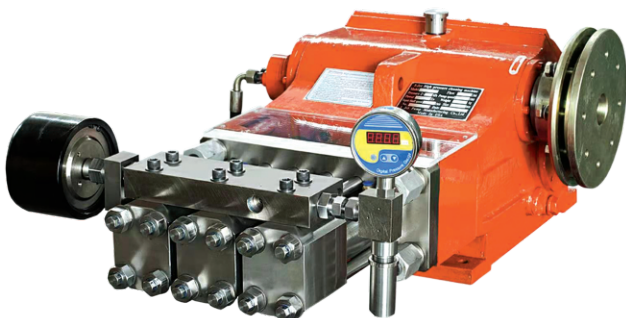


MCSHY

Model No.	Flow Rate		Max. Pressure		Speed RPM	Max. Power	
	L/min	US GPM	Bar	PSI		HP	Kw
MCS8110HY	81	21.4	1000	14500	366	208	155

Technical Specifications:

- Fluid end material: High quality stainless steel.
- Cylinder material: High quality stainless steel.
- Plunger: Solid ceramic plunger, Dia : 28 mm, Speed : 1.08 m/s
- Pump Stroke: 120 mm,
- Pump Shaft Speed : 366 rpm
- Rod force: 105KN
- Conversion efficiency: 90-96%
- Force-cooler
- Force feed lubrication system
- Force oil cooling system
- Pressure control valve: 1000bar manual type
- Safety valve: 10% of max. pressure
- Pressure gauge: 200 Mpa

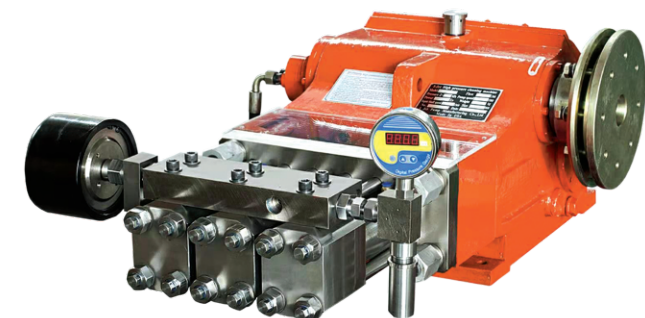


MCSHY

Model No.	Flow Rate		Max. Pressure		Speed RPM	Max. Power	
	L/min	US GPM	Bar	PSI		HP	Kw
MCS1425HY	14	3.7	2500	36250	506	90	67

Technical Specifications:

- Fluid end material: High quality stainless steel.
- Cylinder material: High quality stainless steel.
- Plunger: Solid ceramic plunger, Dia : 14 mm, Speed : 1.012 m/s
- Pump Stroke: 60 mm,
- Pump Shaft Speed : 506 rpm
- Rod force: 40KN
- Conversion efficiency: 90-96%
- Force-cooler
- Force feed lubrication system
- Force oil cooling system
- Pressure control valve: 3000bar manual type
- Safety valve: 10% of max. pressure
- Pressure gauge: 500 Mpa



MCSHY

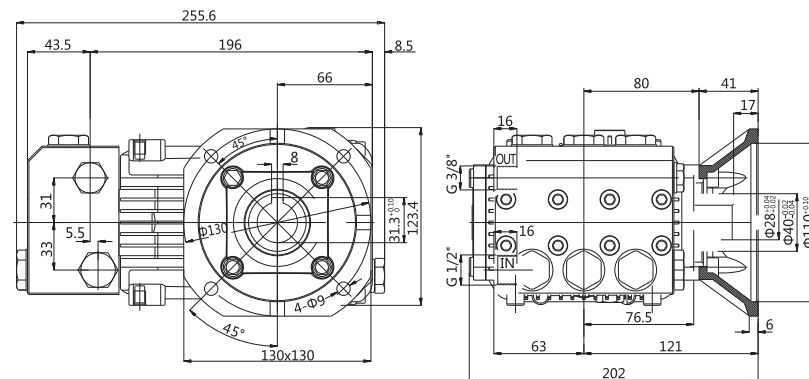
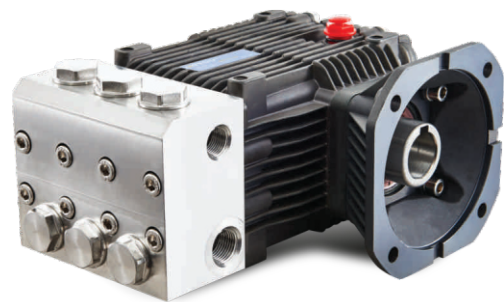
Model No.	Flow Rate		Max. Pressure		Speed RPM	Max. Power	
	L/min	US GPM	Bar	PSI		HP	Kw
MCS2525HY	25	6.6	2500	36250	470	160	120

Technical Specifications:

- Fluid end material: High quality stainless steel.
- Cylinder material: High quality stainless steel.
- Plunger: Solid ceramic plunger, Dia : 16 mm, Speed : 1.08 m/s
- Pump Stroke: 90 mm,
- Pump Shaft Speed : 470 rpm
- Rod force: 54KN
- Conversion efficiency: 90-96%
- Force-cooler
- Force feed lubrication system
- Force oil cooling system
- Pressure control valve: 3000bar Air control bye-pass valve
- Safety valve: 10% of max. pressure
- Pressure gauge: 500 Mpa



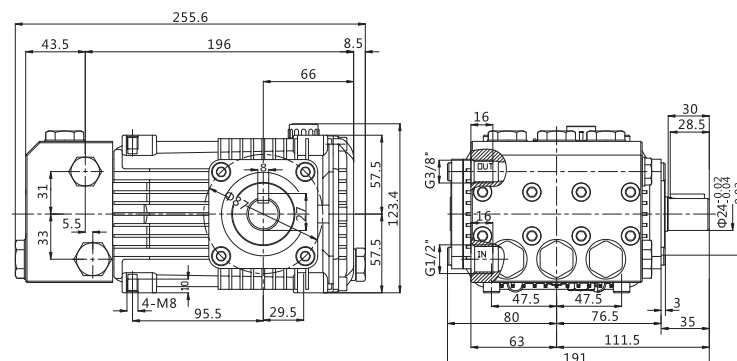
PUMPS FOR SPECIAL APPLICATION



Stainless Steel SS316L

MCSLT Hollow Shaft

Model No.	Flow Rate		Max. Pressure		Shaft Ø mm	Max. Power	
	L/min	US GPM	Bar	PSI		HP	Kw
1450 RPM							
MCSLT1610BRF	16	4.23	100	1450	22	4	3
MCSLT2310BRF	23	6.08	100	1450	22	5.5	4
MCSLT3010BRF	30	7.93	100	1450	25	7.5	5.5

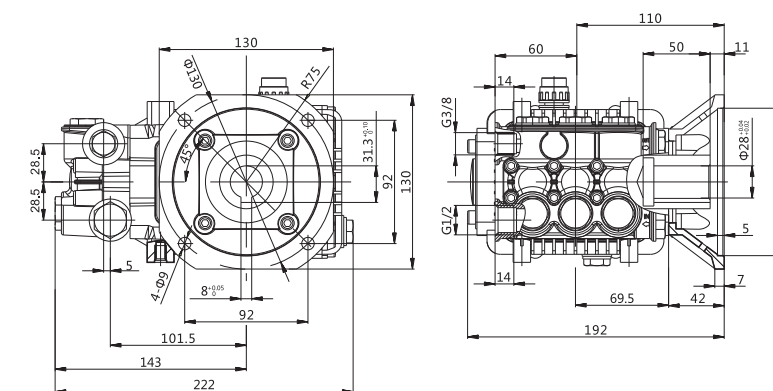


Stainless Steel SS316L

MCSLT Solid Shaft

Model No.	Flow Rate		Max. Pressure		Shaft Ø mm	Max. Power	
	L/min	US GPM	Bar	PSI		HP	Kw
1450 RPM							
MCSLT1610BR	16	4.23	100	1450	22	4	3
MCSLT2310BR	23	6.08	100	1450	22	5.5	4
MCSLT3010BR	30	7.93	100	1450	25	7.5	5.5

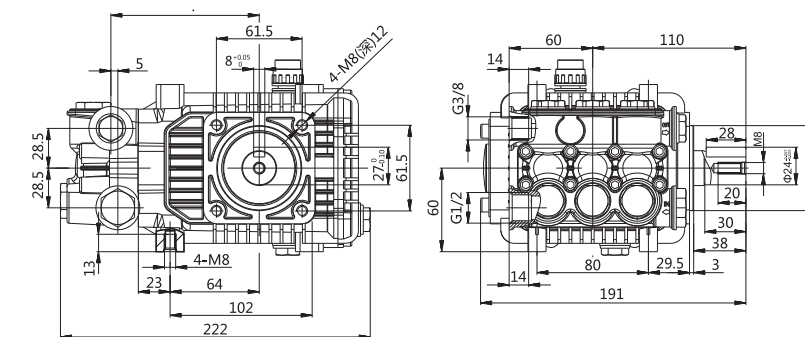
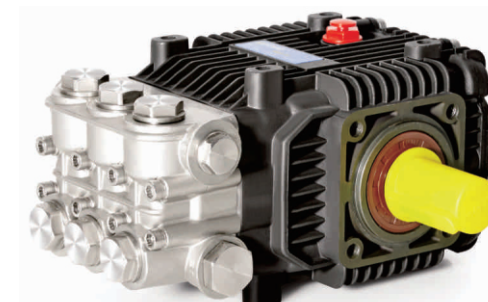
HIGH TEMPERATURE PUMPS



High Temperature Pumps 85°C

MCSLB Hollow Shaft

Model No.	Flow Rate		Max. Pressure		Shaft Ø mm	Max. Power	
	L/min	US GPM	Bar	PSI		HP	Kw
1450 RPM							
MCSLB0610BRF	6	1.5	100	1450	18	2	1.5
MCSLB0810BRF	8	9	100	1450	18	2	1.5
MCSLB1110BRF	11	2.11	100	1450	18	3	2.2
MCSLB1510BRF	15	3.96	100	1450	20	4	3



High Temperature Pumps 85°C

MCSLB Solid Shaft

Model No.	Flow Rate		Max. Pressure		Shaft Ø mm	Max. Power	
	L/min	US GPM	Bar	PSI		HP	Kw
MCSLB0610BR	5.5	1.45	100	1450	18	2	1.5
MCSLB0810BR	7.5	1.98	100	1450	18	2	1.5
MCSLB1110BR	11	2.91	100	1450	18	3	2.2
MCSLB1510BR	15	3.96	100	1450	20	4	3



HIGH PRESSURE COLD WATER JET CLEANERS

SABRINA

Model No.	Working Pressure	Flow Rate LPM	Maximum Intel Water Pump °C	Electric Supply	Electric Motor HP	Motor KW	Motor RPM	Weight KG
MAGNA 130/8C	130	8	60	230V / 50 Hz	3	2.2	1450	40
MAGNA 150/15C	150	15	60	415V / 50 Hz	5	3.7	1450	45
MAGNA 200/15C	200	15	60	415V / 50 Hz	7.5	5.5	1450	60
MAGNA 250/15C	250	15	60	415V / 50 Hz	10	7.5	1450	75

- Technical Features
- Brass Pump Head.
 - Ceramic Pistons.
 - Stainless Steel Valves.
 - Crank & Connecting Rod Mechanism.
 - Heavy Duty Motor, TEFC, Class 'F' insulation,1450 rpm.
 - DOL Starter with overload relay for motors above 5 HP.
 - Water inlet coupling with strainer.
 - Unloader valve suitable for trigger on/off operation thereby by-passing the water back to the inlet, it also act as a safety valve.
 - Glycerin filled pressure gauge indicates the operating pressure of the equipment.
 - Preheated water upto 60°C can be fed to the equipment.
 - The Trolley is fabricated from mild steel and powder coated for long lasting.
 - Rubber wheels provided absorbs vibration if any in the equipment.
 - Continuos Duty Machine.

- Standard Accessories supplied with the equipment
- Water inlet hose 5 mtrs. long.
 - High pressure hose 10 mtrs. long.
 - Spray gun assembly.
 - High pressure lance with V jet.
 - Electric Cable 5 mtrs. long.

All machines can be supplied in flameproof, non flameproof, diesel / petrol engine fitted versions.



SOLID

Model No.	Working Pressure	Flow Rate LPM	Maximum Intel Water Pump °C	Electric Supply	Electric Motor HP	Motor KW	Motor RPM	Weight KG
MAGNA 130/8C	130	8	60	230V / 50 Hz	3	2.2	1450	48
MAGNA 150/15C	150	15	60	415V / 50 Hz	5	3.7	1450	53
MAGNA 200/15C	200	15	60	415V / 50 Hz	7.5	5.5	1450	70
MAGNA 250/15C	250	15	60	415V / 50 Hz	10	7.5	1450	80

- Technical Features
- Brass Pump Head.
 - Ceramic Pistons.
 - Stainless Steel Valves.
 - Crank & Connecting Rod Mechanism.
 - Heavy Duty Motor, TEFC, Class 'F' insulation,1450 rpm.
 - DOL Starter with overload relay for motors above 5 HP.
 - Water inlet coupling with strainer.
 - Unloader valve suitable for trigger on/off operation thereby by-passing the water back to the inlet, it also act as a safety valve.
 - Glycerin filled pressure gauge indicates the operating pressure of the equipment.
 - Preheated water upto 60°C can be fed to the equipment.
 - The Trolley is fabricated from stainless steel for long lasting.
 - Rubber / PU wheels provided absorbs vibration if any in the equipment.
 - Continuos Duty Machine.

- Standard Accessories supplied with the equipment
- Water inlet hose 5 mtrs. long.
 - High pressure hose 10 mtrs. long.
 - Spray gun assembly.
 - High pressure lance with V jet.
 - Electric Cable 5 mtrs. long.

All machines can be supplied in flameproof, non flameproof, diesel / petrol engine fitted versions.



HIGH PRESSURE WATER BLASTER



IMPACT

Model No.	Working Pressure	Flow Rate LPM	Maximum Intel Water Pump °C	Electric Supply	Electric Motor		Motor RPM	Weight KG
					HP	KW		
MAGNA 200/30C	200	30	60	230V / 50 Hz	15	11	1450	130
MAGNA 300/19C	300	19	60	415V / 50 Hz	15	11	1450	130
MAGNA 350/21C	350	21	60	415V / 50 Hz	20	15	1450	160
MAGNA 350/16C	350	16	60	415V / 50 Hz	15	11	1450	130
MAGNA 350/57C	350	57	60	415V / 50 Hz	50	37	1450	400
MAGNA 500/16C	400	16	60	415V / 50 Hz	20	15	1450	190
MAGNA 500/22C	500	22	60	415V / 50 Hz	30	22	1450	250
MAGNA 500/29C	500	30	60	415V / 50 Hz	40	30	1450	350
MAGNA 600/29C	600	16	60	415V / 50 Hz	50	37	1450	400

Technical Features

- Brass Pump Head.
- Ceramic Pistons.
- Stainless Steel Valves.
- Crank & Connecting Rod Mechanism.
- Heavy Duty Motor, TEFC, Class ‘F’ insulation,1450 rpm.
- Star Delta Starter with overload relay.
- 60 Ltrs. Water tank with filter inlet hose nipple 1", overflow 1" nipple, float valve to avoid overflow, float switch for low water level cut-off.
- Unloader valve suitable for trigger on/off operation thereby by-passing the water back to the inlet tank.
- Glycerin filled pressure gauge indicates the operating pressure of the equipment.
- Preheated water upto 60°C can be fed to the equipment.
- The Trolley is fabricated from mild steel and powder coated for long lasting.
- Rubber wheels provided absorbs vibration if any in the equipment.
- Continuos Duty Machine.

Standard Accessories supplied with the equipment

- Water inlet hose 5 mtrs. long.
- High pressure hose 10 mtrs. long.
- Spray gun assembly.
- High pressure lance with V jet.
- Electric Cable 10 mtrs. long.

All machines can be supplied in flameproof, non flameproof, diesel / petrol engine fitted versions.

HIGH PRESSURE HOT WATER JET CLEANERS



DARTER

Model No.	Max. Pressure		Flow Rate		Temperature °C		Speed RPM	Max. Power	
	Bar	PSI	LT/H	GAL/H	Min.	Max		HP	Kw
DARTER 12/11	120	1750	660	174	30	100	1450	3.0	2.2
DARTER 15/14	150	2175	840	220	30	100	1450	5.5	4.0
DARTER 18/12	180	2570	720	190	30	100	1450	5.5	4.0
DARTER 20/15	200	2900	900	237	30	100	1450	7.5	5.5

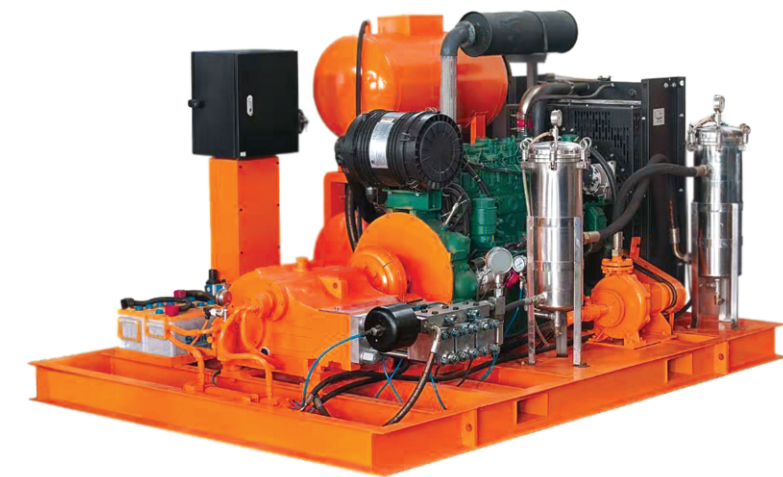
Technical Features

- Brass Pump Head.
- Ceramic Pistons.
- Stainless Steel Valves.
- Crank & Connecting Rod Mechanism.
- Heavy Duty Motor, TEFC, Class ‘F’ insulation,1450 rpm.
- DOL Starter with overload relay.
- Unloader valve suitable for trigger on/off operation thereby by-passing the water back to the inlet tank.
- Glycerin filled pressure gauge indicates the operating pressure of the equipment.
- Preheated water upto 60°C can be fed to the equipment.
- Maximum outlet temperature 100°C, on demand can be supplied upto 140°C.
- Non IBR diesel fired boiler is equipped on the machine.
- Temperature can be controlled from atmospheric to 100°C with the help of thermostat.
- Fuel Tank 15 litres and chemical suction hose is provided.
- Auto start & stop facility is also provided.
- Solenoid valve, photosensor, pressure switch are the safety features in addition to unloader valve, safety valve and thermostat.
- The Trolley is fabricated from mild steel and powder coated and solid plastic cover for long lasting.
- Rubber wheels provided absorbs vibration if any in the equipment.
- Continuos Duty Machine.

Standard Accessories supplied with the equipment

- Water inlet hose 5 mtrs. long.
- High pressure hose 10 mtrs. long.
- Spray gun assembly.
- High pressure lance with V jet.
- Electric Cable 10 mtrs. long.

ULTRA HIGH PRESSURE WATER BLASTER



UHP

Model No.	Working Pressure	Flow Rate LPM	Electric Supply	Electric Motor		Speed RPM	Weight KG Approx.
				HP	KW		
MAGNA 800/78	800	78	415V / 50 Hz	160	120	470	1800
MAGNA 1000/81	1000	81	415V / 50 Hz	215	160	366	2200
MAGNA 2500/14	2500	14	415V / 50 Hz	90	67	506	1300
MAGNA 2500/25	2500	25	415V / 50 Hz	160	120	470	1800
MAGNA 2500/41	2500	41	415V / 50 Hz	250	186	366	2500

Technical Specifications:

- Fluid end material: High quality stainless steel.
- Cylinder material: High quality stainless steel.
- Plunger: Solid ceramic plunger.
- Pressure control valve: manual / Pneumatic type
- Conversion efficiency: 90-96%
- Force-cooler
- Force feed lubrication system
- Force oil cooling system
- Safety valve: 10% of max. pressure
- Pressure gauge
- Heavy Duty Motor, TEFC, Class ‘F’ insulation,1450 rpm.
- Electric control panel with starter, overload relay, single phasing preventor, low water level cut-off, line indicator, AMP meter, Volt meter, frequency meter, Hour run meter,
- 80 Ltrs. Water tank with filter inlet hose nipple 1", overflow 1" nipple, float valve to avoid overflow, float switch for low water level cut-off.
- Dump Gun with lance and nozzle
- Glycerin filled pressure gauge indicates the operating pressure of the equipment.
- The machine can be supplied in 2 versions, Trolley and Skid.
- Continuous Duty Machine.

SAFETY VALVES



CODE	INLET	BY-PASS	WEIGHT G Oz		REPAIR KIT
0215010420	2x G 3/8F	G 3/8 F	490	17.28	4079900034
0215010430	2x 3/8 NPT F	3/8 NPT F	488	17.21	4079900034

RATED PRESSURE: 360 bar | 36 MPa | 5220 Psi
PERMISSIBLE PRESSURE: 400 bar | 40 MPa | 5800 psi
MIN. ADJUSTABLE PRESSURE: 36 bar | 3.6 MPa | 522 psi
RATED FLOW: 25 l / min | 6.6 USG pm
RATED TEMPERATURE: 90°C | 194°F

SAFETY VALVES



CODE	INLET	BY-PASS	WEIGHT G Oz		REPAIR KIT
0215010230	1x G 3/8F	G 3/8 F	358	12.5	4079900012

RATED PRESSURE: 250 bar | 25 MPa | 3628 Psi
PERMISSIBLE PRESSURE: 280 bar | 28 MPa | 4060 psi
MIN. ADJUSTABLE PRESSURE: 25 bar | 2.5 MPa | 362 psi
RATED FLOW: 25 l / min | 6.6 USG pm
RATED TEMPERATURE: 90°C | 194°F

SAFETY VALVES



CODE	INLET	BY-PASS	ALLOWABLE TESTING PRESSURE MPa psi	WEIGHT G Oz		REPAIR KIT
4073500003	G 1/2 F	G 1/2 F	20-50 2900-7250	1480	52.21	4079900048

PERMISSIBLE PRESSURE: 560 bar | 56 MPa | 8100 psi
RATED FLOW: 100 l/min | 26.4 USGpm
RATED TEMPERATURE: 90°C | 194°F

UNLOADER VALVES



CODE	INLET	OUTLET	BY-PASS	WEIGHT G Oz		REPAIR KIT
0215010260	2x G 3/8F	G 3/8F	2x G 3/8F	810	28.5	4079900005

RATED FLOW: 40 l / min | 10.5 USG pm
RATED TEMPERATURE: 90°C | 194°F

SPRING COLOUR:	YELLOW ●	BLUE ●	BLACK ●
RATED PRESSURE:	140 bar 14 MPa 2030 Psi	220 bar 22 MPa 3200 Psi	280 bar 28 MPa 4060 Psi
PERMISSIBLE PRESSURE:	160 bar 16 MPa 2320 psi	250 bar 25 MPa 3630 psi	310 bar 31 MPa 4500 psi

VHP 50

UNLOADER VALVES

CODE	INLET	OUTLET	BY-PASS	COLOUR	WEIGHT G Oz		REPAIR KIT
4072000091	G 1/2 F	G 1/2 F	G 1/2 F		1150	40.57	4079900040

RATED PRESSURE: 500 bar | 50 MPa | 7250 Psi
PERMISSIBLE PRESSURE: 550 bar | 55 MPa | 8000 psi
RATED FLOW: 100 l / min | 26.4 USG pm
RATED TEMPERATURE: 90°C | 194°F



VHP 60

UNLOADER VALVES

CODE	INLET	OUTLET	BY-PASS	COLOUR	WEIGHT G Oz		REPAIR KIT
4072000103	G 1/2 F	G 1/2 F	G 1/2 F		1100	38.80	4079900040

RATED PRESSURE: 550 bar | 55 MPa | 8000 Psi
PERMISSIBLE PRESSURE: 600 bar | 60 MPa | 8700 psi
RATED FLOW: 100 l / min | 26.4 USG pm
RATED TEMPERATURE: 90°C | 194°F



TRP 25

ROTATING NOZZLES

CODE	INLET	SIZE	NEW COLOUR	DIAMETER mm	OLD COLOUR	WEIGHT G Oz		REPAIR KIT
472652115	G 1/4 F	03	Bright Yellow	1.15	----	400	14.1	650413115
472602120	G 1/4 F	035	Orange	1.20	White	400	14.1	650413120
472602130	G 1/4 F	04	Dark Green	1.30	Bright Yellow	400	14.1	650413130
472602135	G 1/4 F	045	Dark Yellow	1.35	----	400	14.1	650413135
472602140	G 1/4 F	05	Light Blue	1.40	Blue	400	14.1	650413140
472602145	G 1/4 F	055	White	1.45	----	400	14.1	650413145

PERMISSIBLE PRESSURE: 250 bar | 25 MPa | 3625 psi
RATED TEMPERATURE: 90°C | 194°F



ROTOJET 400

ROTATING NOZZLES

CODE	INLET	SIZE	WEIGHT G Oz		REPAIR KIT
0204007090	G 1/4 F	02	732	25.8	0204107090
0204006900	G 1/4 F	03	732	25.8	0204106900
0204006905	G 1/4 F	035	732	25.8	0204106905
0204006910	G 1/4 F	04	732	25.8	0204106910
0204006915	G 1/4 F	045	732	25.8	0204106915
0204006920	G 1/4 F	05	732	25.8	0204106920
0204006925	G 1/4 F	055	732	25.8	0204106925

PERMISSIBLE PRESSURE:
400 bar | 40 MPa | 5800 psi

RATED TEMPERATURE:
90°C | 200°F



WET SAND BLASTING NOZZLE

TS33+5F

CODE	INLET	NOZZLE SIZE	Ø NOZZLE mm	Ø HOSE BARB mm in		WEIGHT G Oz	
4053200004	G 1/4 F	045	1.50	13	0.512	452	15.9

RATED PRESSURE: 220 bar | 22 MPa | 3200 Psi
PERMISSIBLE PRESSURE: 250 bar | 25 MPa | 3625 psi
RATED TEMPERATURE: 90°C | 194°F+
PROBE LENGTH: 500 mm | 19.7 in
Ø HOSE BARB: 13 mm | 0.511 in



WET SAND BLASTING NOZZLES & NOZZLE HOLDERS

TPS 560

CODE	INLET	SAND NOZZLE	NOZZLE	Ø HOSE BARB mm in	WEIGHT G Oz		REPAIR KIT
470018	G 1/4 F	Tungsten Carbide	1/4 NPT 15°	21	0.827	1012 35.7	650419

RATED PRESSURE: 500 bar | 50 MPa | 7250 Psi
PERMISSIBLE PRESSURE: 560 bar | 56 MPa | 8100 psi
RATED FLOW: 25 l / min | 6.6 USG pm
RATED TEMPERATURE: 90°C | 194°F



VARIABLE ANGLE NOZZLE

IDROJET 2

CODE	INLET	SIZE	MY COLOUR	WEIGHT G Oz	
0204008000	G 1/4 F	03	Yellow	166	5.9
0204008010	G 1/4 F	035	White	166	5.9
0204008030	G 1/4 F	04	Blue	166	5.9
0204008050	G 1/4 F	045	Orange	166	5.9

RATED PRESSURE: 207 bar | 20.7 MPa | 3000 Psi
PERMISSIBLE PRESSURE: 220 bar | 22 MPa | 3200 psi
RATED FLOW: 30 l / min | 8 USG pm
RATED TEMPERATURE: 150°C | 300°F



SPRAY GUNS

MV 925

CODE	INLET	OUTLET	WEIGHT G Oz		REPAIR KIT
4012405000	G 3/8F	G 1/4 F	456	16.08	4019900032

RATED PRESSURE: 280 bar | 28 MPa | 4060 Psi
PERMISSIBLE PRESSURE: 310 bar | 31 MPa | 4500 psi
RATED FLOW: 30 l / min | 8 USG pm
RATED TEMPERATURE: 160°C | 320°F



RL 57

SPRAY GUNS

CODE	INLET	OUTLET	WEIGHT	
			G	Oz
30.4700.00	3/8 Bsp F	1/4 Bsp F	714	25.18

RATED PRESSURE: 500 bar | 50 MPa | 7250 Psi
PERMISSIBLE PRESSURE: 550 bar | 55 MPa | 8000 psi
RATED FLOW: 28 l / min | 7.5 USG pm
RATED TEMPERATURE: 160°C | 320°F



ML 510

SPRAY GUNS

CODE	INLET	OUTLET	WEIGHT	
			G	Oz
30.5400.00	1/2 Bsp F	1/2 Bsp F	1394	49.17

RATED PRESSURE: 500 bar | 50 MPa | 7250 Psi
PERMISSIBLE PRESSURE: 560 bar | 56 MPa | 8100 psi
RATED FLOW: 80 l / min | 21 USG pm
RATED TEMPERATURE: 100°C | 210°F



CODE 90009

SLUDGE SUCTION DEVICE

MAX WORKING PRESSURE: 500 bar | 50 MPa | 7250 Psi
RATED FLOW: 50 l / min | 21 USG pm
RATED TEMPERATURE: 90°C | 194°F



SR 8

ROTATING BRUSH

CODE	INLET	OUTLET	WEIGHT	
			G	Oz
30.5400.00	1/2 Bsp F	1/2 Bsp F	1394	49.17

RATED PRESSURE: 30 bar | 3 MPa | 435 Psi
PERMISSIBLE PRESSURE: 560 bar | 56 MPa | 8100 psi
RATED FLOW: 30 l / min | 8 USG pm
RATED TEMPERATURE: 60°C | 140°F



TUBE CLEANER

FLEXIBLE TUBE CLEANER

MAX WORKING PRESSURE: 440 bar | 40 MPa | 6380 Psi
RATED FLOW: 40 l / min | 10.5 USG pm
RATED TEMPERATURE: 90°C | 194°F



HIGH PRESSURE HOSE PIPE

HOSES

CODE	DASH SIZE	DN	HOSE ID (Nom)		HOSE OD (Nom)		WORKING PRESSURE		MIN. BURST PRESSURE		MIN. BEND RADIUS	
			Inch	mm	Inch	mm	psi	bar	psi	bar	Inch	mm
PH154	4	6	1/4	6.4	0.59	15.0	5800	400	23200	1600	4.00	100
PH154	5	8	5/16	8.0	0.65	16.5	5075	350	20300	1400	4.60	115
PH154	6	10	3/8	9.5	0.74	18.8	4800	330	19200	1320	5.20	130

INLET COUPLING

COUPLINGS

PART NO.	INLET	HOSE		WEIGHT	
		mm	inch	G	Oz
28.0042.00	3/8 Bsp M	17	0.7	82	2.89

RATED PRESSURE: 8 bar | 0.8 MPa | 115 Psi
RATED FLOW: 20 l / min | 5 USG pm
RATED TEMPERATURE: 60°C | 140°F



AR41 "A" SST NIPPLE M22 - Ø 14 MM - BSP

SCREW COUPLINGS

PART NO.	INLET	HAND NUT	WEIGHT	
			G	Oz
26.0150.20	1/4 Bsp F	AR 1 TYPE	68	2.4



MAX. RATED PRESSURE: 280 bar | 28 MPa | 4050 Psi
RATED FLOW: 40 l / min | 10 USG pm
RATED TEMPERATURE: 160°C | 320°F



TUBE CLEANER

FLEXIBLE TUBE CLEANER

MAX WORKING PRESSURE: 1200 bar | 120 MPa | 7250 Psi
RATED FLOW: 50 l / min | 21 USG pm
RATED TEMPERATURE: 90°C | 194°F



RIGID LANCE

LANCE

CODE	LENGTH mm	OUTLET	OUTLET
240702	900	1/4 Npt M	1/4 Npt F
240702	700	1/4 Npt M	1/4 Npt F

MAX. PRESSURE: 250 bar | 25 MPa | 3625 Psi
RATED FLOW: 40 l / min | 10.5 USG pm
RATED TEMPERATURE: 150°C | 300°F



FOAM LANCE

FOAM LANCE WITH CONTAINER

CODE	INLET	NOZZLE	NOZZLE TYPE	WEIGHT G Oz	
25.1520.12	1/4 Bsp F	1.25	Horizontal	470	6.58

RATED PRESSURE: 160 bar | 16 MPa | Psi
PERMISSIBLE PRESSURE: 180 bar | 18 MPa | 2600 psi
RATED FLOW: 12 l / min | 3 USG pm
TANK: 1 l | 0.64 USG



NOZZLES

TUBE CLEANING NOZZLE

CODE	NOZZLE SIZE	WEIGHT G Oz	
25.1204.40	03	10	0.35

RATED PRESSURE: 350 bar | 35 MPa | 5100 Psi
MATERIAL : Stainless Steel 303

CODE	NOZZLE SIZE	WEIGHT G Oz	
25.1201.51	04	23	0.81

RATED PRESSURE: 250 bar | 25 MPa | 3650 Psi
MATERIAL : Stainless Steel 303



INDUSTRIAL VACUUM CLEANERS



WET & DRY VACUUM CLEANERS

Model No.	HL15	HL30	HL60
No. of Motor	1	1	2
Max. Watt	1000 W	1000 W	1000 W X 2 Nos.
Electric Supply	220-240V, 50 Hz	220-240V, 50 Hz	220-240V, 50 Hz
Vacuum Suction	2200 mm H ₂ O	2550 mm H ₂ O	2550 mm H ₂ O
Air Flow	200 m ² /hr	200 m ² /hr	400 m ² /hr
Tank Capacity	15 Ltrs.	30 Ltrs.	60 Ltrs.
Tank	Steel	Steel	Steel
IP Protection	IP X4	IP X4	IP X4
Cable Length	----	----	---
Hose Dia	----	----	----
Motor Type	----	----	----
Sound Level DB	----	----	----
Tank Dia	----	----	----