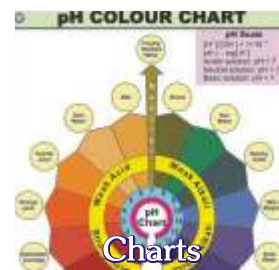


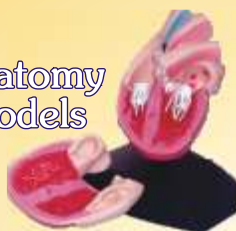


KANSIL'S

Science Catalogue 2016-17



Anatomy Models



Skeleton Models



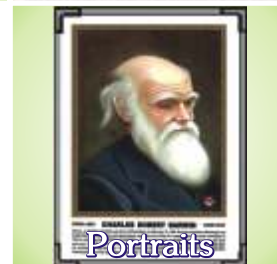
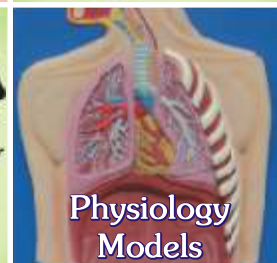
Binoculars



Science Kit



Skin Model



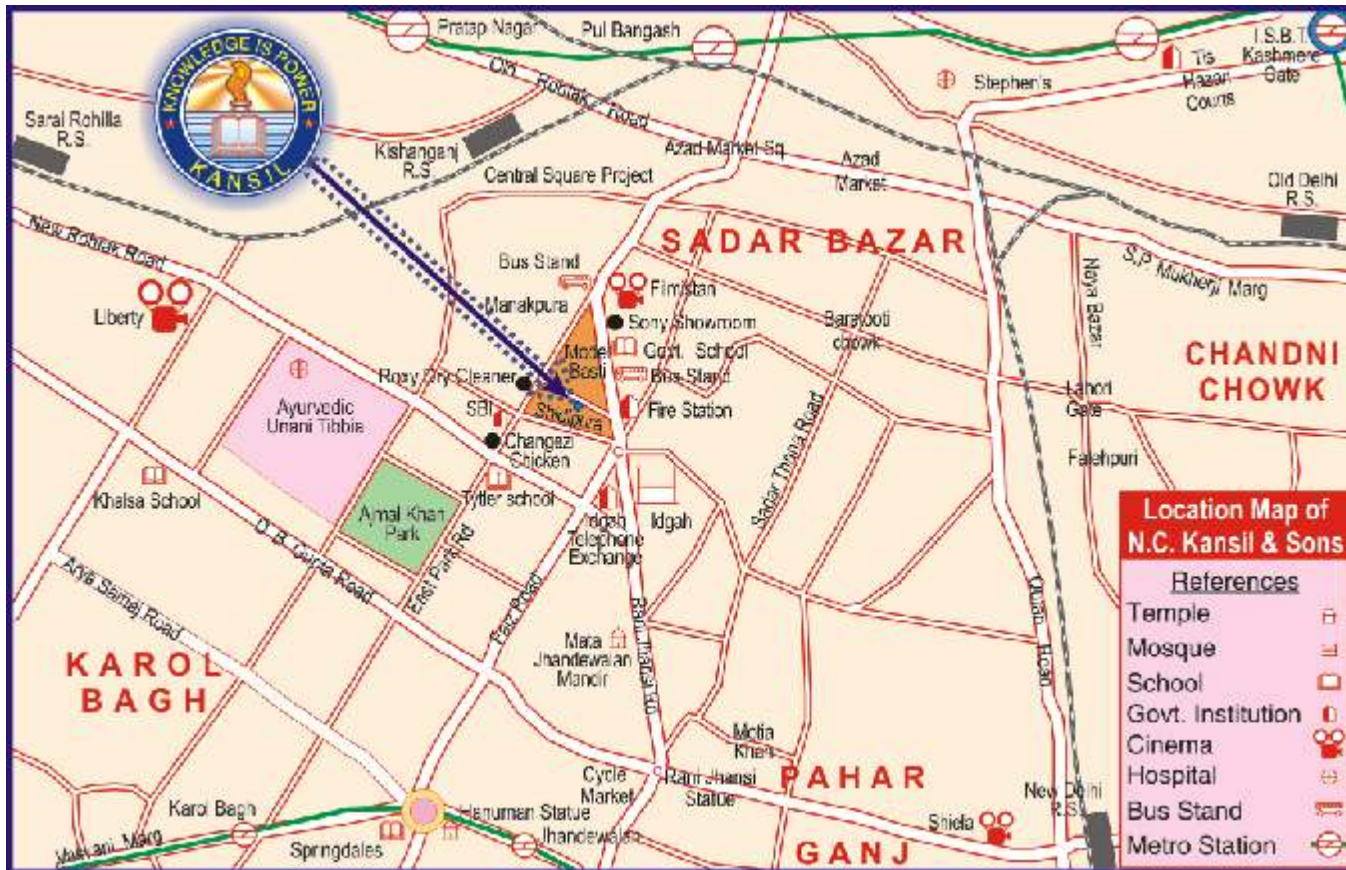
**MOST MODERN
& INDISPENSABLE
TEACHING LEARNING
MATERIAL FOR PHYSICS,
CHEMISTRY, BOTANY,
ZOOLOGY**

Dear Patron,

Our Science Catalogue 2016-17 is being presented with immense pleasure and confidence. As a continuous research and development is a way of life with us, we have been adding very new innovative articles to expand our range of products.

This year we have added some kits for the young students to inculcate in them a spirit of creativity in robotics, electronics as well as other subjects.

Some models are introduced which are world class and yet suitable for every budget. We are sure that a perusal of the catalogue will be a rich experience and the articles will enrich your Science Lab.



CONTENTS

ITEM	Page
SCIENCE SECTION	1-14
Science & Technology Charts	1-7
Botany Charts	1-2
Zoology Charts	2-3
Chemistry Charts	3-5
Physics Charts	5-6
General Charts	7
Genetics And Evolution Charts, AIDS Charts	8
Periodic Table Chart, Lab Display Charts, Life Sketch of Scientists	9
Food And Nutrition Charts	10
3-D Biology Models (Models on Botany, Zoology and Flowers)	11
3-D Human Anatomy Models	11
Special Models on Human Anatomy	12
Portraits of Great Personalities	13-14
HEALTH & HYGIENE SECTION	15-19
Health Care Series, Prevent The Diseases	15
Human Physiology Charts Laminated	16
Human Physiology Charts Synthetic	17
First Aid Charts, Some Special Charts	18
Yogasan Charts	19
DISPLAY SYSTEM	20-22
Laminated Black or Green Boards, Black Board Instruments	20
Stand for The Display Boards	20
White Boards, Notice Boards, Goldsign Display Boards, Map Stands	21
Preskograph Aids & Interchangeable Boards	22
HUMAN PHYSIOLOGY AND ANATOMY MODELS	23-32
Bones & Skeleton Models	23-25
Human Anatomy Models	26
Digestive System	26-27
Heart & Circulatory System, Dental Models	27
Skin & Ear, Eye	28
Respiratory System	29
Excretory System, Gynae & Obstetric Models	30
Reproductive System, Brain & Nervous System	31
CPR Manikin, New Biology Models	32
Build Your Own Human Anatomy Museum	32
IMPORTED TEACHING AIDS	33-35
Community Health Models, Telescopes	33
Binoculars, Microscopes, Videoscope	34
Solar Kit, Mini Solar System, Frog Dissecting Kit	35
Chemistry Lab Kit, Student Balance kit	35
SCIENCE KITS	36-38
New Science Teaching Kits	36-37
Science Working Models	38
VISUAL TEACHING AIDS	39-41
Overhead Projector, Slide Projector, Accessories	39
OHP Transparencies, Slides	40-41
VIDEO CDs	41-42
Indian School Syllabus on CDs (Biology, Physics, Chemistry)	41-42

Some Tips to Study the Catalogue

Welcome! - You are about to enter the wonderfully exciting world of Teaching Aids. In the pages of these catalogues you will come to know the products manufactured and marketed by us. Before you start browsing through them we give below some tips that will help you to study it better and effectively.

1. All the articles are manufactured in very heavy quantity by using very costly designs, dies and patterns. As such the size and description cannot be changed or altered at will. Please prepare your requirements according to the material and size mentioned in the catalogue.
2. All the articles are properly coded. Please mention the code and language.
3. The illustrations of charts are very selective. Each and every chart cannot be displayed in the catalogue. As such while placing an order please consult the detailed list mentioned therein.
4. The panorama of the Teaching Learning material has been very well arranged subjectwise and where ever necessary we have given cross references.
5. Applicability of Value Added Tax or CST and other overhead expences have been mentioned below. Please go through the same.
6. It may be stated that the division of the catalogue is just for the sake of convenience. You may place your requirements with us all in one lot.

PLEASE NOTE

1. Customers' full satisfaction is our business policy. We are fully confident of the high standard and quality of our products.
2. To avoid delay in the execution of your order, please be careful as to mention:
 - a. The size & language of the map, chart, model or globe required by you.
 - b. Your nearest Railway Station and the name of your bankers.
3. The prices mentioned are nett, Ex-godown. Packing, Forwarding and Transportation charges extra. Maps, Charts and Globes are exempted from Value Added Tax/Central Sales Tax . On other articles VAT/CST @ 12.5% is extra.
4. Please mention very clearly your exact requirements mentioning either the cost or our catalogue page No. and serial No. This will help us in processing your indents at a faster speed.
5. Images shown in the catalogue are for reference only. It may differ in colour or shade from actual product.
6. We are sole distributor of ZXTM models.
7. Please look for our Hologram to buy genuine products.
8. All disputes subject to Delhi Courts Jurisdiction only.

SCIENCE AND TECHNOLOGY CHARTS

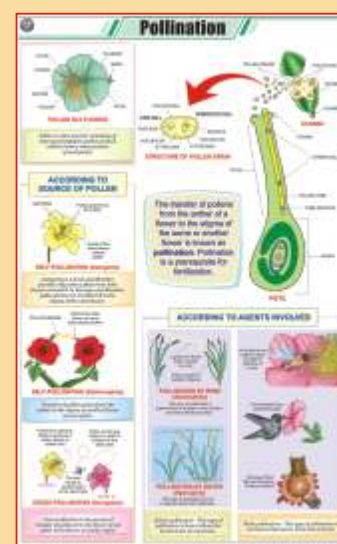
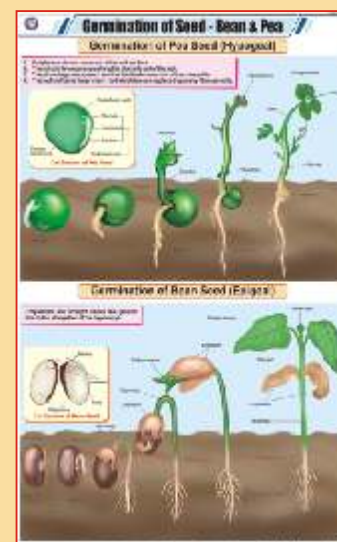
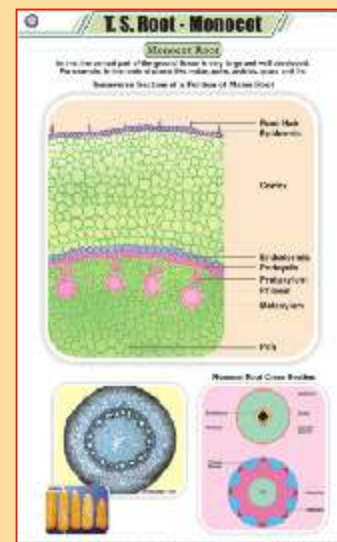
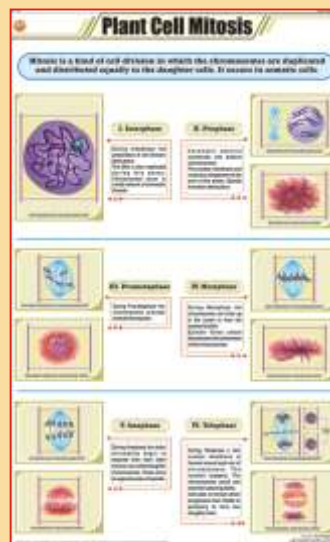
size 58 x 90 cm (In English only)

The charts aim at familiarising students with the subject in a very realistic way and in social context. These delineate the process of life and of the technology that conditions our world today. The students will come to know the intricacies of the phenomenon and how it can be best used for the benefit of mankind. Using the latest printing technology the charts are printed on art paper in full colours and are duly laminated on both sides with thick plastic film and are fitted with plastic rollers.

BOTANY

- STB01 Plant Kingdom** : Classification of plants, Cryptogamae, Phanerogame.
- STB02 Typical Plant** : Non-flowering plants, Flowering plants.
- STB03 Typical Plant Cell**
- STB04 Plant Cell Organelles** : Nucleus, Cell Wall, Cell membrane, Endoplasmic reticulum, Mitochondria, Golgi bodies, Plastids, Chloroplast.
- STB05 Plant Tissues** : Meristematic, Permanent.
- STB06 Plant Cell Mitosis**
- STB07 Plant Cell Meiosis**
- STB08 T.S. Stem - Monocot** : Maize stem.
- STB09 T.S. Dicot Stem (Sunflower)**
- STB10 T.S. Root - Monocot** : Maize root.
- STB11 T.S. of Dicot Root** : Gram root.
- STB12 T.S. Leaf - Monocot** : Maize, Boutelova (C_4 grass), Poa annua (C_3 grass).
- STB13 T.S. Leaf - Dicot** : Mango, Waterlily, Nerium oleander.
- STB14 Types of Leaves** : Simple, Compound, Heterophyll, Phyllotaxy, Venation.
- STB15 Root Systems** : Tap, Fibrous, Adventitious.
- STB16 Structure of Flower** : Parts, Symmetry & floral diagram Actinomorphic, Zygomorphic, Assymetrical, Position of floral organs.
- STB17 Calyx and Corolla** : Calyx modifications, Shapes of corolla.
- STB18 Inflorescences** : Racemose, Cymose.
- STB19 Fruits** : Parts, Classification - simple, aggregate, composite.
- STB20 The Seed : Structure & Germination** : Dicot-exalbuminous & albuminous, Monocot exalbuminous & albuminous, Condition necessary for germination, Epigeal, Hypogeal.
- STB21 Germination of Seed - Bean & Pea** : Hypogeal germination, Epigeal germination.
- STB22 Dispersal of Fruits & Seeds** : Dispersal by - air, animals, water, explosion.
- STB23 Photosynthesis** : Calvin Benson Cycle Light reaction, Dark reaction, Requirements.
- STB24 Plant Diseases** : Black rot, Late blight, Bacterial wilt, Smut, Brown spot, TMV, Brown rust, Yellow mosaic, Red rot, Bacterial blight, Powdery mildew, Leaf curl.
- STB25 Reproduction in Plants** : Vegetative reproduction, Spore formation, Sexual reproduction of flowering plants.
- STB26 Pollination** : Autogamy, Geitonogamy, Xenogamy, Anemophily, Hydrophily, Biotic (zoophily).
- STB27 Double Fertilization**
- STB28 Artificial Vegetative Propagation** : Tissue culture, Cutting, Layering, Grafting.
- STB29 Stem Modifications** : Underground modification, Subaerial modification, Aerial modification.
- STB30 Root Modifications** : Modifications of tap root, adventitious root and roots for support.
- STB31 Hydrophytes** : External features & anatomical characters.
- STB32 Mesophytes** : General description, external features & anatomical characters.

Each Rs. 150.00



BOTANY

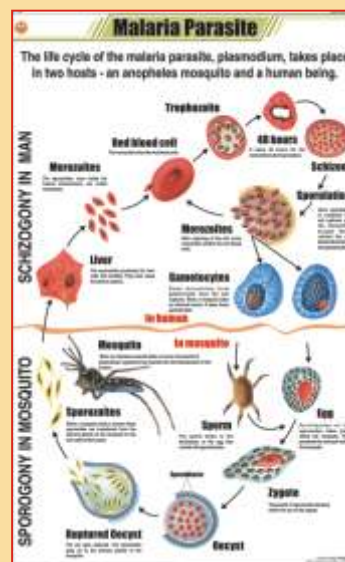
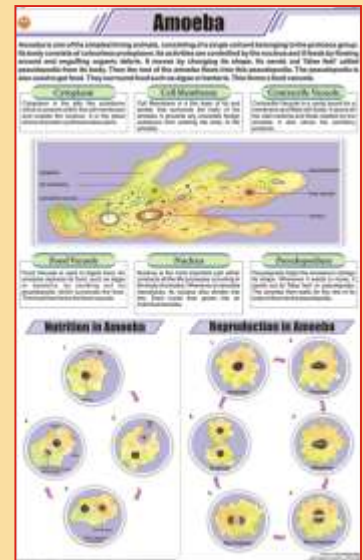
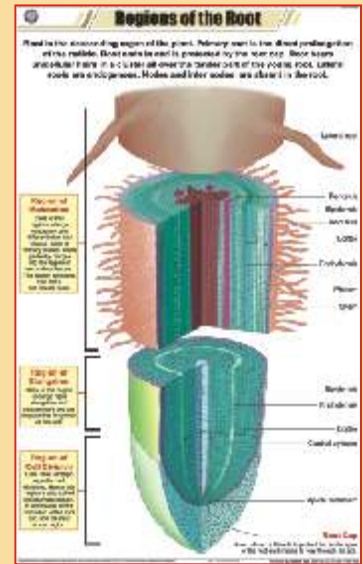
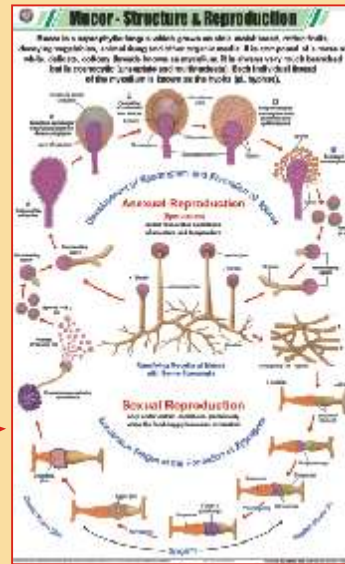
- STB33 Xerophytes** : External features & anatomical characters.
- STB34 Insectivorous Plants** : Sundew (drosera), Venus fly-trap (dionaea), Pitcher plant (nepenthes), Bladderwort (urticularia).
- STB35 Fungi** : Classification, Symbiotic relationships, Economic importance, Harmful effects, Animal & plant fungal diseases.
- STB36 Algae** : Classification, Uses, Harms.
- STB37 Viruses** : Classification, Plant and animal viral diseases.
- STB38 Bacteria** : Classification, Shape, Respiration, Chemical nature of cell wall, Growth & reproduction, Useful activities, Diseases.
- STB39 Life Cycle of Fern**
- STB40 Life Cycle of Moss**
- STB41 Spirogyra** : Structure, Reproduction.
- STB42 Life Cycle of Mushroom**
- STB43 Leaf Modification** : Tendrils, Spines, Thorns, Bracts, Flashy Leaves, Adhesive disc, Reproductive leaf, Phyllode, Insectivory.
- STB44 Parasitic Plants** : Holoparasites - rafflesia, Ivy broomrape, cuscuta, Hemiparasites - Indian paintbrush, mistletoe, owl's clover.
- STB45 Mucor** : Structure & reproduction.
- STB46 Regions of Root** : Region of maturation, Elongation and cell division.

Each Rs. 150.00

ZOOLOGY

- STZ01 Animal Kingdom** : Classification in several phylum, Classification of sub-phylum vertebrata into different classes.
- STZ02 Animal Cell**
- STZ03 Animal Cell Organelles** : Nucleus, Nuclear membrane, Cell membrane, Golgi bodies, Centriole, Ribosomes, Endoplasmic reticulum, Cilium, Flagellum, Mitochondria, Lysosome, peroxisome.
- STZ04 Animal Tissues** : Epithelial, Connective, Muscular, Nervous.
- STZ05 Animal Cell Mitosis**
- STZ06 Animal Cell Meiosis**
- STZ07 Gametogenesis in Animals** : Oogenesis, Spermatogenesis
- STZ08 Fertilization in Animals** : Structure of sperm & ovum, Fertilization process.
- STZ09 Protozoa** : Classification into 4 classes- Rhizopoda (amoeba), Mastigophora (euglena, giardia), Ciliophora (paramecium), Sporozoa (plasmodium vivax).
- STZ10 Amoeba** : Structure, Nutrition and reproduction.
- STZ11 Malaria Parasite** : Life cycle of malaria parasite - plasmodium vivax.
- STZ12 Paramecium** : Structure, Nutrition, Locomotion and reproduction.
- STZ13 Hydra** : Structure, LS of body wall, Nematocyst, Reproduction & developmental stages.
- STZ14 Liver Fluke** : Structure and life cycle.
- STZ15 Tapeworm** : Morphology, Anatomy and general characteristics.
- STZ16 Roundworm (Ascaris)**
- STZ17 Hookworm**
- STZ18 Life History of Mosquito**
- STZ19 Life Cycle of Butterfly**
- STZ20 Life History of Housefly**
- STZ21 Life History of frog**
- STZ22 Human Blood** : Functions, Components, RBC structure, Blood group, Blood clotting.
- STZ23 Body's Defense** : Types of Leucocytes, Vaccination, Structure of antibody, Acquired Immunity.
- STZ24 Harmful Insects**
- STZ25 Beneficial Insects**
- STZ26 Food Habits of Birds**

Each Rs. 150.00



ZOOLOGY

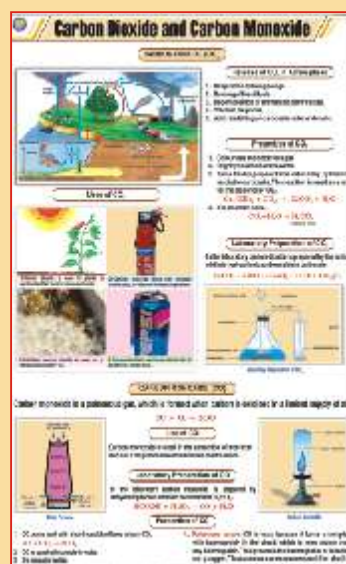
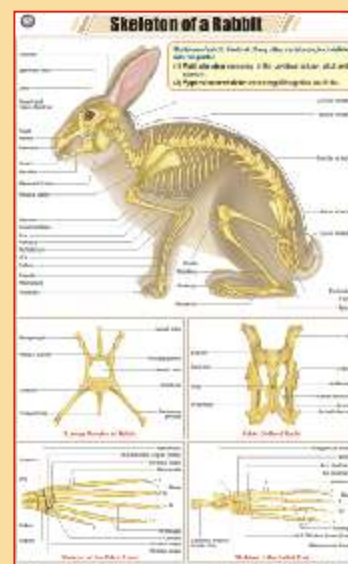
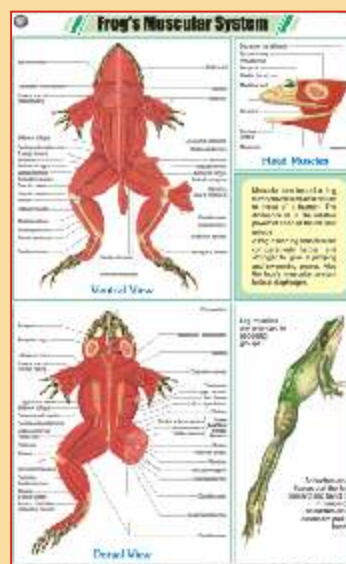
- STZ27 Fish Anatomy** : Bony fish-general anatomy & skeletal system, Cartilaginous fish-general anatomy, Gill structure.
- STZ28 Birth of a Bird's Chick**
- STZ29 Earthworm I** : Ext. Morphology & Reproduction.
- STZ30 Earthworm II** : Blood Circulation, Respiratory & Nervous system.
- STZ31 Earthworm III** : Digestion, Skin & Excretion.
- STZ32 Cockroach I** : Morphology & Reproduction.
- STZ33 Cockroach II** : Blood Circulation, Respiratory & Nervous system.
- STZ34 Cockroach III** : Digestion, Excretory, Skin & Muscles.
- STZ35 Vertebrate Classes**
- STZ36 Sense Organs** : Eye, Ear, Tongue, Skin, Nose. **NEW**
- STZ37 General Dissection of Rabbit** **NEW**
- STZ38 Neuron** : Structure, Synapse, Bipolar N., Unipolar N., Multipolar N. **NEW**
- STZ39 Early Development of the Frog** **NEW**
- STZ40 Frog's Morphology & Internal Structure** **NEW**
- STZ41 Frog's Urogenital System** **NEW**
- STZ42 Frog's Circulatory System** **NEW**
- STZ43 Frog's Nervous System** **NEW**
- STZ44 Frog's Muscular System** **NEW**
- STZ45 Life Cycle of Cockroach** **NEW**
- STZ46 Skeleton of a Bird** : (pigeon) **NEW**
- STZ47 Skeleton of Rabbit** **NEW**

Each Rs. 150.00

CHEMISTRY

- STC01 Atom And Atomic Structure** : JJ Thompson discharge tube experiment, Rutherford's gold leaf experiment, Chadwick, Goldstein, Rutherford & Bohr's contribution.
- STC02 Chemical Reactivity of an Element** : Reactivity series of metals.
- STC03 Chemical Reaction & its Characteristics**
- STC04 Classification of Chemical Reactions** : Combination reaction, Decomposition reaction, Displacement reaction, Double displacement reaction, Redox reaction, Exothermic - endothermic reaction, Photochemical reaction.
- STC05 Valencies of Elements**
- STC06 Chemical Bonding** : Covalent bonding, Ionic bonding, Metallic bonding, Hydrogen bonding.
- STC07 Combustion** : Types of combustion - rapid, slow, explosion, complete, incomplete, ignition temperature.
- STC08 Separation of Substances** : Distillation, Fractional distillation, Loading, Filtration, Churning, Evaporation & crystallisation, Magnetic separation, Sedimentation & decantation, Centrifugation, Sieving, Winnowing, Sublimation, Separating Funnel.
- STC09 Atmosphere and Composition of Air** : Layers of atmosphere, Composition of air.
- STC10 Occurrence and Forms of Carbon**
- STC11 Carbon dioxide and Carbon Monoxide**
- STC12 Carbonates and Bicarbonates** : Sodium Carbonate, Calcium carbonate, Sodium bicarbonate.
- STC13 Sulphur** : Extraction, Structure, Types, Effects of heat, Vulcanisation.

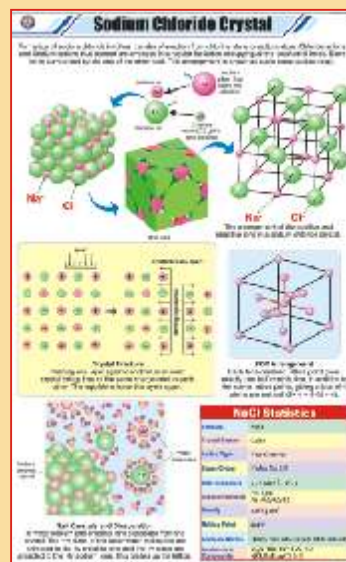
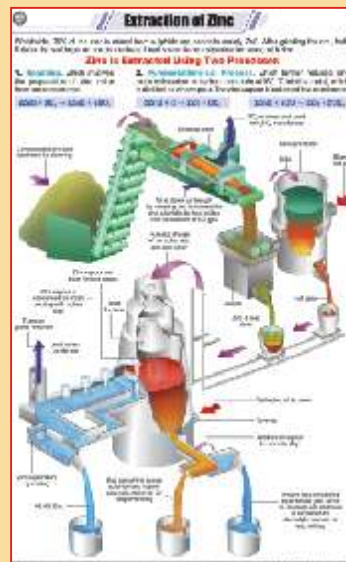
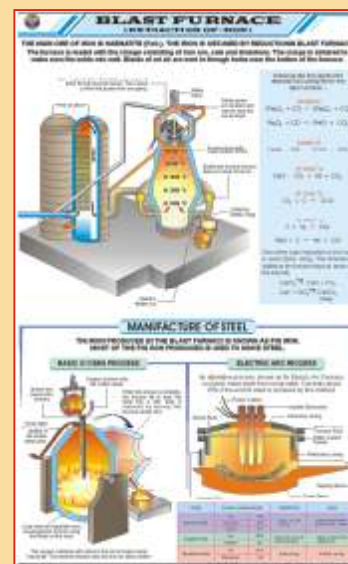
Each Rs. 150.00



CHEMISTRY

- STC14 Mole Concept :** Avagadro number, Avogadro's hypothesis.
- STC15 Composition of Water by Weight :** Berzelius, Dulong & Dumas method, Morley's method, Proust's law.
- STC16 Different Kinds of Cells :** Galvanic cell, Dry cell, Car battery, Rechargeable cell, Sodium sulphur battery, Solar cell, Fuel cell, Mercury zinc button cell.
- STC17 Electroplating & Corrosion**
- STC18 Cement and Concrete**
- STC19 Manufacture of Glass**
- STC20 Alkanes :** General formula, Nomenclature, Applications, Methane molecule.
- STC21 Alkenes :** General formula, Functional group, Structure and IUPAC names, Preparation, Applications.
- STC22 Alkynes :** General formula, Functional group, Nomenclature, Structure & IUPAC names, Preparation, Applications.
- STC23 Alcohols :** General formula, Functional group, Nomenclature, IUPAC names & structure, Preparation, Uses of ethanol.
- STC24 Esters :** General formula, Nomenclature, Common esters, Preparation, Application.
- STC25 Organic Acids :** Functional group, Common organic acids, Applications.
- STC26 Soaps and Detergents :** Structure, Cleansing action, Problem with hard water.
- STC27 Plastics :** Thermoplastics - PVC & polythene, Thermosetting - bakelite & melamine.
- STC28 Synthetic Fibres :** Rayon, Polyester, Nylon, Acrylic.
- STC29 Blast Furnace :** Blast furnace, Manufacture of steel-basic oxygen process & electric arc process.
- STC30 Aluminium Metallurgy :** Bayer's process, Hall-Heroult process, Uses.
- STC31 Copper Metallurgy :** Important ores, Extraction process, Electrolysis, Uses.
- STC32 Extraction of Zinc**
- STC33 Prep. of Sodium Hydroxide & Sodium Carbonate :** Castner Kellner cell, Solvay process.
- STC34 Prep. of Nitrogen and Nitric acid :** Laboratory prep. of nitrogen & nitric acid, Cryogenic distillation, Ostwald's process.
- STC35 Prep. of Chlorine and Hydrochloric acid**
- STC36 Prep. of Sulphur Dioxide and Sulphuric acid :** Contact process.
- STC37 Prep. of Ammonia and Haber Process**
- STC38 Prep. of Oxygen and Liquefaction of Air**
- STC39 Prep. of H_2 & CO_2 :** Lab preparation of hydrogen and carbon dioxide, Steam re-forming of natural gas.
- STC40 Manufacture of Bleaching Powder :** Hasenclever plant, Bachmann's plant.
- STC41 Manufacture of Phosphorus :** Manufacture of white phosphorus and red phosphorus.
- STC42 Crystal Lattices**
- STC43 Close Packed Structures**

Each Rs. 150.00



CHEMISTRY

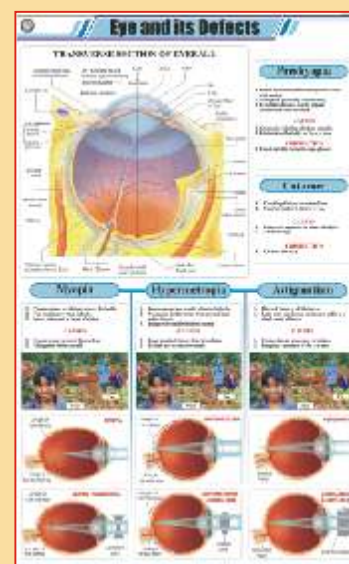
- STC44 Sodium Chloride Crystal**
- STC45 Acids, Bases and Salts**
- STC46 Electrolysis** : Electrolysis of molten NaCl, Faraday's laws of electrolysis, Refining, Electroplating. **NEW**
- STC47 Atoms and Molecules** : Atomic No, Mass No, Istopes, Isobars, Isotones, Molecules, Chemical formula. **NEW**
- STC48 Solids, Liquids & Gases** **NEW**

Each Rs. 150.00

PHYSICS

- STP01 Motion** : Linear motion - rectilinear, curvilinear; Rotational motion, Oscillatory motion, Periodic motion.
- STP02 Changes Around Us**
- STP03 Metric Weights and Measures** : SI units and their multiples and submultiples.
- STP04 Measurements** : Standard systems of measurements.
- STP05 Sound** : What is sound ?, Decibel scale of different sounds, Characteristics of sound, Sonic boom, Ultrasound & echo.
- STP06 Wave Motion** : Transverse wave, Longitudinal wave.
- STP07 Simple Machine** : Lever, Pulley, Wedge, Inclined plane, Screw, Wheel & Axle.
- STP08 The Lever** : Lever of - first class, second class, third class.
- STP09 Principle of Archimedes**
- STP10 Pascal's Law**
- STP11 Reflection of Light** : Laws of reflection, Image formation by plane & spherical mirrors.
- STP12 Refraction Through a Glass Slab** : Lateral displacement, Refractive index, Refraction through different mediums, Total internal reflection.
- STP13 Refraction Through Prisms** : Dispersion, Refraction through equilateral prism, Re-combination of spectrum colours, Rainbow.
- STP14 Refraction of Light Through lenses** : Image formation by concave and convex lenses.
- STP15 Optical Instruments** : Slide projector, Binoculars, Telescope, Compound microscope, Magnifying glass camera, Periscope.
- STP16 Microscope** : Compound microscope, Electron microscope, Ray diagram.
- STP17 Telescope** : Refracting telescope, Ray diagram of refracting & reflecting (cassegrain) Telescope.
- STP18 Eye and its Defects** : TS of eyeball, Presbyopia, Cataract, Myopia, Hypermetropia, Astigmatism.
- STP19 Electric Current-Sources-Effects**
- STP20 Static Electricity** : Electroscope, Vande-Graff generator, Electrostatic induction, Lightning spark, Photocopier.
- STP21 Current Electricity** : Electric current, Conventional current, Wiring of a plug, Transmission of electricity, Electric circuit inside a torch and a house.

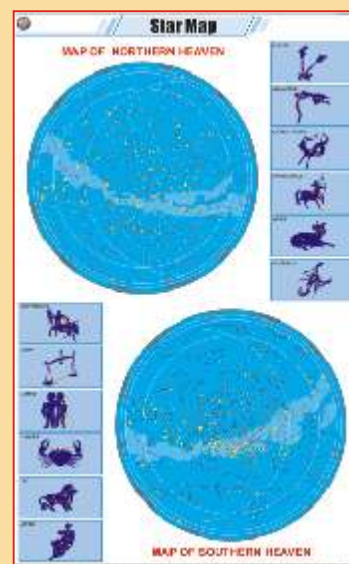
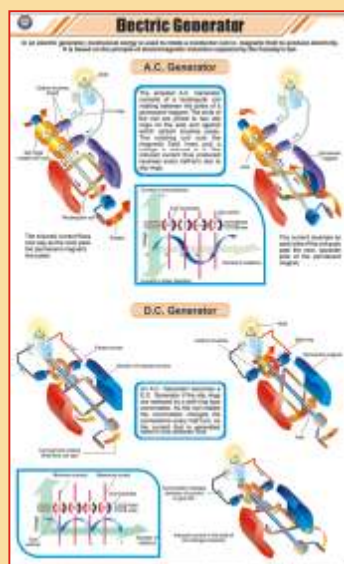
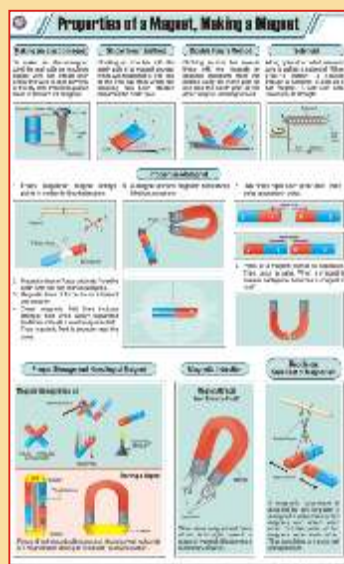
Each Rs. 150.00



PHYSICS

- STP22 Ohm's Law & Electrical Resistance** : Ohm's law, Factors affecting resistance, Resistance of series and parallel combination.
- STP23 Electric Circuit's Components Symbols**
- STP24 Magnetism** : Earth's magnetic field, Magnetic compass, Types of magnets, Theory of magnetism, Vah Allen radiation belt.
- STP25 Properties of a Magnet, Making a Magnet**
- STP26 Electromagnetism** : Oersted's experiment, Magnetic field of a current carrying conductor markwell's right hand grip rule, Fleming's left hand rule, Applications.
- STP27 Electromagnetic Induction** : Induction using bar magnet, Self-induction, Mutual induction, Fleming's right hand rule, Applications.
- STP28 Electric Motor** : simple DC & AC motor, commercial electric motor, applications.
- STP29 Electric Bell**
- STP30 Electric Generator** : AC & DC generator.
- STP31 Dynamo** : Dynamo principle, Bicycle bottle dynamo, Faraday's disc dynamo : Pixii's commutated DC dynamo.
- STP32 Force** : Effects of force, Combining force.
- STP33 Friction** : Static, kinetic & rolling friction. Advantages & disadvantages of friction, Methods of increasing or decreasing friction.
- STP34 Gravitation** : Universal law of gravitation, Gravitational constant G, Acceleration due to gravity, Weight, Weightlessness.
- STP35 Moment and Couple**
- STP36 Work and Power**
- STP37 Nuclear Fusion** : Proton-Proton chain, CNO cycle, Controlled fusion, Hydrogen bomb.
- STP38 Nuclear Fission** : Chain reaction, Spontaneous fission, Controlled fission, Neutron induced fission, Breeding plutonium-239, enrichment of nuclear fuel.
- STP39 Nuclear Reactor** : Pressurized water reactor, Fast nuclear reactor.
- STP40 Radioactivity** : Types of radioactive radiations, Penetrating power, Carbon dating, Decay of uranium-238.
- STP41 Radio Telescope** : Radio telescope, Astronomical interferometers.
- STP42 X-Ray**
- STP43 Television**
- STP44 Multistage Rocket**
- STP45 Wind Mill**
- STP46 Petrol Engine**
- STP47 Steam Engine**
- STP48 Diode**
- STP49 Universe I (Life Cycle of a Star)**
- STP50 Universe II (Comets & Meteors)**
- STP51 Star Map**
- STP52 Newton's Laws of Motion** **NEW**
- STP53 Simple Electric Circuit** : Open & close circuit, Parallel circuit, Series circuit. **NEW**

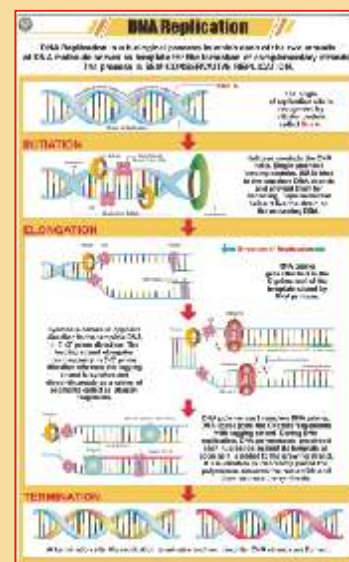
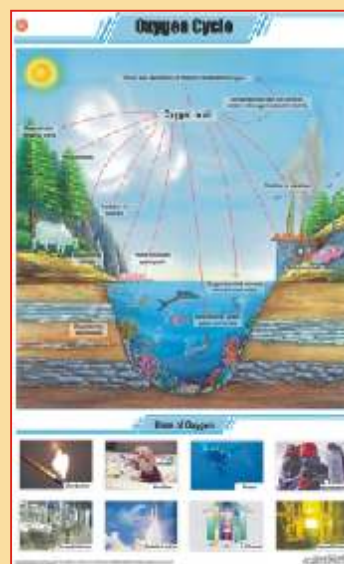
Each Rs. 150.00



GENERAL

- STG01 The Cell Theory** : Prokaryotic, Eukaryotic, Unicellular, Multicellular, Cell theory.
- STG02 DNA**
- STG03 RNA** : rRNA, mRNA, tRNA, Flow of genetic information, Virus structure.
- STG04 Levels of Organization**
- STG05 Origin of Life** : Miller and Urey experiment, Steps in origin of life, Coacervates.
- STG06 Cellular Respiration (Kreb's Cycle)** : Glycolysis, Krebs TCA cycle, electron transport chain.
- STG07 Animal Husbandry**
- STG08 Economic Plants**
- STG09 Basic Agricultural Practices**
- STG10 Medicinal Plants - I**
- STG11 Medicinal Plants - II**
- STG12 Energy Needs**
- STG13 Fossil Fuels** : Types-solid, liquid, gaseous, calorific value, characteristics coal & petroleum.
- STG14 Petroleum & Natural Gas** : Formation of petroleum, Oil drilling, Fractional distillation.
- STG15 Renewable Sources of Energy**
- STG16 Nuclear Energy** : Nuclear energy power plant, Fission, Fusion, Atomic bomb, Hydrogen bomb, Uses, Effects.
- STG17 Bio-Gas** : Fixed dome type, Floating gas holder type.
- STG18 Nitrogen Cycle**
- STG19 Oxygen Cycle**
- STG20 Carbon Cycle**
- STG21 Fire & Fire Extinguishers**
- STG22 Soil- A natural Resource** : Uses, Soil erosion, Soil conservation, Soil pollution.
- STG23 How Soil is formed and Soil Profile** : Agents of weathering, Layers of soil.
- STG24 Types of Soils in India**
- STG25 Food Chain in Forest Ecosystem** : Simple food chain, Food web.
- STG26 Solar Cooker** : Solar cooker, - Box type, Parabolic type, Panel type.
- STG27 Water Harvesting**
- STG28 Purification of Water** : Boiling, Distillation, Filtration, Chlorination, Reverse osmosis, Domestic RO system.
- STG29 Poultry** : Indegenious breeds, Exotic breeds, Equipments, Behaviour under brooders.
- STG30 Sericulture (L.H. Silkworm)** : Stages of silk production, Life cycle of bombyx mori.
- STG31 Apiculture (L.H. Honeybee)** : Queen honey bee, Artificial bee hive, Honey extractor & extraction.
- STG32 Food Pyramid** : Food pyramid, Components, Balanced diet.
- STG33 Microorganisms**
- STG34 Mutation** : Insertion, Duplication, Deletion, Inversion, Translocation, Frame shift, Point mutation. **NEW**
- STG35 Enzymes** : Structure, Mechanism, Classification, Enzyme activity. **NEW**
- STG36 DNA Replication** **NEW**
- STG37 Osmosis** **NEW**

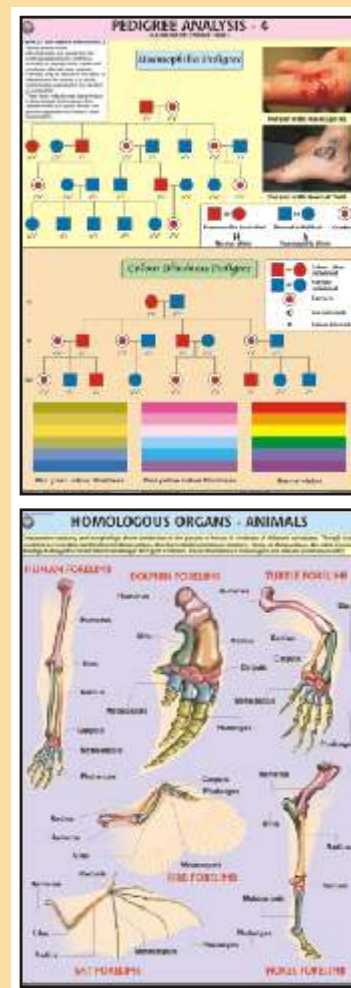
Each Rs. 150.00



GENETICS AND EVOLUTION CHARTS

Printed on Polyart Synthetic Paper. Size 70 x 100 cm. Price Rs. 180.00 Each

- GE01S. Pedigree Analysis - 1: showing standard symbols used in Pedigree Analysis and Sample Pedigree.
- GE02S. Pedigree Analysis - 2: showing Autosomal Dominant Trait Pedigree such as Myotonic Dystrophy and Tongue Curler Pedigree.
- GE03S. Pedigree Analysis - 3: showing Autosomal Recessive Trait Pedigree such as Inheritance of Attached Ear Lobe and Inheritance of Sickle Cell Anaemia.
- GE04S. Pedigree Analysis - 4: showing X-linked Recessive Trait Pedigree such as Haemophilia and Colour Blindness Pedigree.
- GE05S. Pedigree Analysis - 5: showing X-linked Dominant Trait Pedigree such as Hypophosphatemia and Droopy Eyelids Pedigree.
- GE06S. Pedigree Analysis - 6: showing Y-linked Trait - Hairy Ear and Mitochondrial Inheritance Pedigree.
- GE07S. Homologous Organs - Animals: showing Forelimbs of Bat, Turtle, Horse, Human, Bird and Dolphin demonstrating Homology.
- GE08S. Analogous Organs - Animals: showing Wings of Bird, Butterfly, Pterosaur and Bat demonstrating Analogy.
- GE09S. Homologous Organs - Plants: showing thorn of Bougainvillea, tendrils of Cucurbita, fleshy cylindrical stem of Euphorbia, fleshy flattened stem of Opuntia, leafy shoots of Chrysanthemum and pineapple representing Plant Homology.
- GE10S. Analogous Organs - Plants: showing thorn of Pyracantha, spine of Berberis vulgaris, prickles of Prosopis grandulosa and stipular spines of Black Locust representing Plant Analogy.
- GE11S. Hybridisation - 1 (Monohybrid Cross): Cross between Purple coloured and White coloured flower Pea Plant demonstrating inheritance of one dominant character and expression of recessive parental trait without blending in F₂ generation.
- GE12S. Hybridisation - 2 (Dihybrid Cross): Cross between Pea Plants differing in two traits (pod colour & plant height) showing segregation of one pair of character is independent of the other pair of characters.
- GE13S. Hybridisation - 3 (Incomplete Dominance): Cross between true breeding Red and White Snapdragon flower plants showing one character is not completely dominant over other.



CHARTS ON AIDS

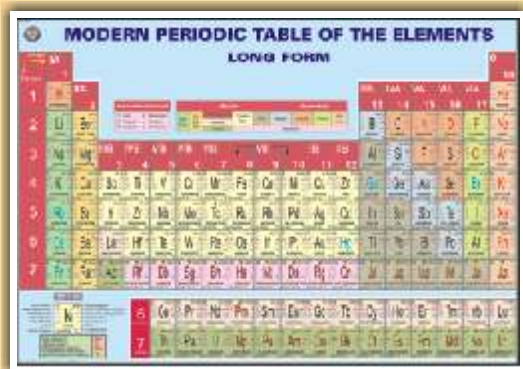
Printed on Polyart Synthetic Paper. Size 70 x 100 cm. Price Rs. 180.00 Each

- AS01S. HIV: showing structure and mechanism of infection of Human Immunodeficiency Virus
- AS02S. Transmission of HIV: explaining different ways which can spread the HIV infection and cause AIDS.
- AS03S. Prevention: showing various measures which, when adopted, prevent transmission of HIV infection.
- AS04S. How AIDS is not transmitted: showing various routine tasks which are not involved in transmission of HIV.
- AS05S. Progress of Infection: showing how HIV infection typically progresses through various stages.
- AS06S. Opportunistic Diseases: depicting complications which an AIDS patient develops that otherwise wouldn't normally occur in a person with a healthy immune system.
- AS07S. Sexually Transmitted Diseases: showing various sexually transmitted diseases which increase the chances of acquiring HIV infection by an individual when exposed to the virus.
- HP26S. Human Immune System: showing different organs involved in a healthy immune mechanism. As AIDS progressively weakens the immune system, chart gives an outline of functions of Immune System to better understand what AIDS can do.



CHEMISTRY LAB DISPLAY CHARTS

PERIODIC CHART OF ELEMENTS



A Most detailed chart printed in multi colours showing Solids, Liquids and Gases in separate distinctive colours together with their Atomic Numbers, Density, Atomic Radius, Melting Point, Electronic Structure, Electro negativity, First Ionization Energy, Oxidation State and Crystal structure. The index given at the side shows the details of information provided for each element.



PT01	Size 140 x 100 cm Laminated	Rs. 280.00
PT02	Size 100 x 70 cm Laminated	Rs. 120.00
PT03S	Size 100 x 70 cm Synthetic	Rs. 180.00
PT04	Size 50 x 35 cm Paper	Rs. 9.00
PT05	Size 50 x 35 cm Laminated w/o rollers	Rs. 26.00
PT06	Size 100 x 75 cm Paper folded in Book form	Rs. 35.00
PT08	Size 90 x 55 cm Laminated	Rs. 100.00

PT07S Mendeleev's Periodic Chart - Printed on Synthetic paper Size 100 x 70 cm. Price Rs. 180.00



LABORATORY SAFETY

Showing basic safety measures to be followed while working in a chemistry laboratory. Printed on Polyart Synthetic Paper. Size 70 x 100 cm.
Code CL01S
Price Rs. 180.00



LABORATORY TECHNIQUES

Showing various procedures and techniques generally used in a chemistry laboratory. Printed on Polyart Synthetic Paper. Size 70 x 100 cm.
Code CL02S
Price Rs. 180.00



pH COLOUR CHART

Reference colours indicated by universal indicator with different acidic or basic substances to show their approximate pH values. Printed on Polyart Synthetic Paper. Size 70 x 100 cm.
Code CL03S
Price Rs. 180.00

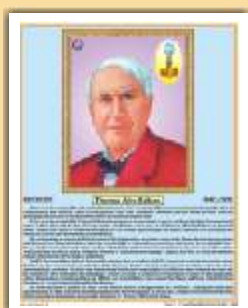


LABORATORY FIRST AID

Showing various first aid techniques and procedures used during an accident in a Laboratory. Printed on Polyart Synthetic Paper. Size 70 x 100 cm.
Code CL04S
Price Rs. 180.00

LIFE SKETCH OF SCIENTISTS

Size 45 x 57 cms Approx. Laminated and fitted with plastic rollers.



LSS01	Albert Einstein	LSS08	H.J. Bhabha	LSS15	Raja Ramanna
LSS02	A.P.J. Kalam	LSS09	J.C. Bose	LSS16	Ramanujan
LSS03	Archimedes	LSS10	Louis Pasteur	LSS17	Rutherford
LSS04	Birbal Sahni	LSS11	Madam Curie	LSS18	S.N. Bose
LSS05	C.V. Raman	LSS12	Meghnad Saha	LSS19	Sarabhai
LSS06	Darwin	LSS13	Mendeleev	LSS20	Thomas Edison
LSS07	Galileo Galilei	LSS14	Newton		



(Available in English as well as in Hindi) Each Rs. 56.00

CHARTS ON FOOD AND NUTRITION

Size 70 x 100 cm. English & Hindi combined. Laminated Each Rs. 130.00

FN01 **OUR FOOD** : Chart shows various components and functions of food. It also illustrates food pyramid mentioning balance diet and daily requirement of nutrients by different age groups.

FN02 **PROTEINS** : Chart shows both animal and plant sources of protein. It also explains various functions performed by proteins in our body and some special conditions of high protein needs.

FN03 **FATS** : Chart shows a brief classification of fats with a mention of essential fatty acids. It also shows some of the important functions and sources of fats.

FN04 **CARBOHYDRATES** : Chart shows classification of carbohydrates as simple and complex with their various functions in the body. It also shows various foods rich in carbohydrates.

FN05 **VITAMINS** : Good explanatory chart depicting both fat soluble and water soluble vitamins with their various sources and reasons of requirement in the body.

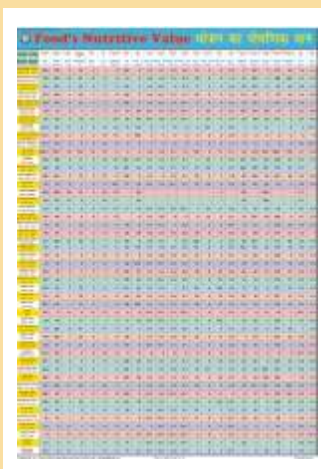
FN06 **MINERALS** : Important minerals like Sodium, Iron, Calcium, Iodine etc. required in our body to live a healthy life are shown in the chart. Chart also shows various functions they perform and their sources.

FN07 **WATER & ROUGHAGE** : Chart shows the importance of water and roughage and some major functions performed by them in the body. Chart also gives a good knowledge about their sources.

FN08 **DEFICIENCY DISEASES** : Chart shows the havoc conditions arise due to deficiency of various nutrients in the body and their symptoms. The understanding of chart will indicate the importance of good balanced diet.

FN09 **OVERNUTRITION DISORDERS** : Chart shows that not only deficiency but also the over consumption of food is not good for health. Various overnutritional disorders with their causes and symptoms are depicted in the chart.

FN10 **Food's Nutritive Value** : Chart shows the nutrient's composition of various common foodstuffs in a tabular form.



BIOLOGY MODELS

BOTANY MODELS

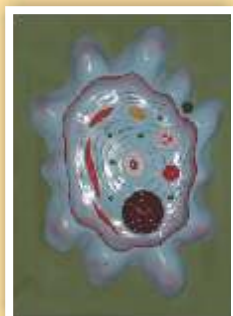
Made of Fiber Glass on MDF Board. Each Model size 60 x 45 cm Price Rs. 1000.00 each

- | | |
|------------------------------------|----------------------------|
| BMB01. Plant Cell | BMB11. T.S. Dicot Stem |
| BMB02. Germination of Seed | BMB12. T.S. Monocot Leaf |
| BMB03. Fertilization & Angiosperms | BMB13. T.S. Dicot Leaf |
| BMB04. Plant Cell Meiosis | BMB14. Root Tip |
| BMB05. Plant Cell Mitosis | BMB15. Life Cycle : Moss |
| BMB06. L.S. Flower | BMB16. Life Cycle : Fern |
| BMB07. L.S. Ovary | BMB17. Life Cycle : Fungus |
| BMB08. T.S. Monocot Root | BMB18. Spirogyra |
| BMB09. T.S. Dicot Root | BMB19. Pitcher Plant |
| BMB10. T.S. Monocot Stem | BMB20. Funaria Plant |



ZOOLOGY MODELS

Made of Fiber Glass on MDF Board.
Each Model size 60 x 45 cm Price Rs. 1000.00 each

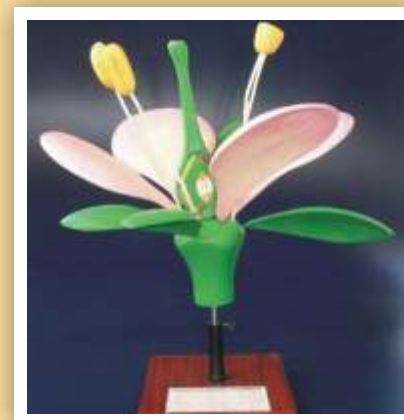


- | | |
|----------------------------|----------------------------------|
| BMZ01. Animal Cell | BMZ11. Frog Dissection |
| BMZ02. Animal Cell Meiosis | BMZ12. Rat Dissection |
| BMZ03. Animal Cell Mitosis | BMZ13. Fish Dissection |
| BMZ04. Amoeba | BMZ14. Rabbit Dissection |
| BMZ05. Paramecium | BMZ15. Development of Frog |
| BMZ06. Hydra | BMZ16. Life History of Silk Worm |
| BMZ07. Euglena | BMZ17. Life History of Mosquito |
| BMZ08. Malarial Parasite | BMZ18. Life History of Honey Bee |
| BMZ09. Bacteria | BMZ19. Life History of Butterfly |
| BMZ10. Virus | BMZ20. Life Cycle of Tapeworm |

MODELS OF FLOWERS

Made of Fiber Glass on stand.
Price Rs. 850.00 each.

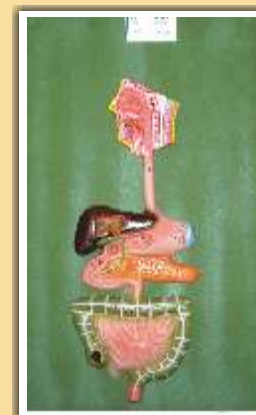
- BMF01. Typical Flower
BMF02. Liliaceae Flower
BMF03. Rosaceae Flower



HUMAN ANATOMY 3-D MODELS

Deluxe quality, made of fiber glass, mounted on wooden board
Size 30 x 50 cm Each Rs. 450.00

- | | | |
|--------------------------|------------------------------------|----------------------------------|
| HA01D Teeth | HA12D Stomach | HA22D Reproductive Organs (Male) |
| HA02D Circulatory System | HA13D Liver | HA23D Lungs |
| HA03D Digestive System | HA14D Kidney | HA24D Skull |
| HA04D Respiratory System | HA15D Brain | HA25D Excretory System |
| HA05D Nervous System | HA16D Heart | HA26D Endocrine System Male |
| HA06D Skeleton | HA17D Eye | HA27D Endocrine System Female |
| HA07D Head & Neck | HA18D Ear | HA28D Muscular System Front View |
| HA08D Skin | HA19D Male Pelvis | HA29D Muscular System Back View |
| HA09D Mouth | HA20D Female Pelvis | HA30D Nose |
| HA10D Tongue | HA21D Reproductive Organs (Female) | |
| HA11D Spinal Cord | | |



SPECIAL MODELS ON HUMAN ANATOMY

HA101A HUMAN BODY TORSO- Torso with head with detachable internal structure of Head and neck, Organs of Thorax and abdomen cavities of the viscera can be emptied, for study of blood vessels. Dissectable in 12 parts made of Fibre Glass painted in natural colours. Made of Fiber Glass. Magnetic. Life SizeRs. 6000.00

HA101 HUMAN BODY- Details as above but non-magnetic.....Rs. 4000.00

HA102 Human Body - Torso Small sizeRs. 1200.00

HA103 HUMAN SKELETON - Life size made of fibre glass. All the bones shoulder & hip joints clearly depictableRs. 2640.00

HA103S Stand for aboveEach Rs. 1200.00

HA104 HUMAN SKELETON - Plastic size 70 cm with standRs. 600.00

HA105 HUMAN SKELETON - Plastic size 40 cm with standEach Rs. 130.00

HA106 Dummy with Doll made of Fibre Glass.....Each Rs. 3500.00

HA107 Female Pelvis with child.....Each Rs. 1100.00

HA108 Female Pelvis with reproductive organs.....Each Rs. 1100.00

HA109 Delivery Process Models set of 8Set Rs. 6800.00

HA110 Development of Fetus/Embryo set of 9Set Rs. 3200.00

HA110L Development of Fetus/Embryo set of 9 Large sizeRs. 7000.00

HA111F Human Female Body Fibre Glass Full Size

Showing organs & musclesEach Rs. 30000.00

HA111M Human Male Body Fibre Glass Full Size

Showing organs & musclesEach Rs. 30000.00

HA112 RNA 60 x 45 cmEach Rs. 1000.00

HA113 DNA 60 x 45 cmEach Rs. 1000.00

HA116 Human Placenta Model made of Fiber GlassEach Rs. 1300.00

Dissectable Models (Fibre Glass)

HA126 Eye BallEach Rs. 260.00

HA127 Human HeartEach Rs. 260.00

HA128 Human EarEach Rs. 260.00

HA129 Human Brain.....Each Rs. 260.00

HA130 Human Kidney.....Each Rs. 260.00

Fibre Glass Models (Wooden Base) size 81 x 31 cm

HA151 Human Digestive SystemEach Rs. 1000.00

HA152 Human Blood Circulatory.....Each Rs. 1000.00

HA153 Human Nervous System.....Each Rs. 1000.00

HA154 Human Reproductive Male.....Each Rs. 1000.00

HA155 Human Reproductive Female.....Each Rs. 1000.00

HA156 Human Excretory System.....Each Rs. 1000.00

HA157 Human Respiratory System.....Each Rs. 1000.00



PORTRAITS OF GREAT PERSONALITIES

MATT CANVAS LAMINATED ON NUWOOD BOARD

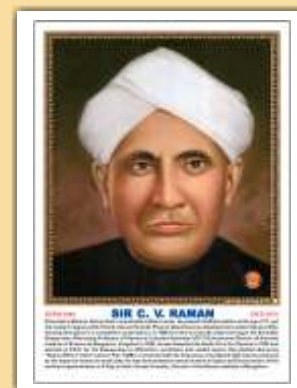
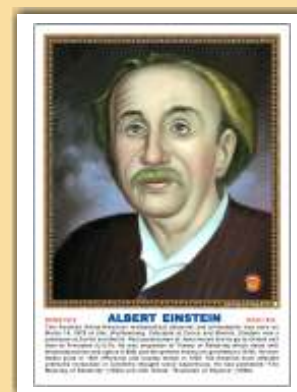
GREAT SCIENTISTS

Size 31 x 43 Cms Approx (GS01P - GS104P) Each Rs. 340.00

Size 45 x 60 Cms Approx (GS01PS - GS104PS) Each Rs. 900.00

GS01	Charles Robert Darwin (B)	GS66	Crick (B)
GS02	Gregor Mendel (B)	GS67	Watson (B)
GS03	Lamarck (B)	GS68	Edward Victor Aplanon (P)
GS04	Louis Pasteur (B)	GS69	James Clark Maxwell (P)
GS05	Dr. William Harvey (B)	GS70	Jessek Luious Gelusale (P & C)
GS06	Leonardo-da-Vinci (B)	GS71	Johns Kepler (A & P)
GS07	Sir Joseph Lister (B)	GS72	Kalpana Chawla (A & P)
GS08	Anton Van leeuwenhoek (B)	GS73	Max Planck (P)
GS09	Carl Von Linnaeus (B)	GS74	Panchanan Maheshwari (B)
GS10	Edward Jenner (B)	GS75	Varah Mihir (A, P & M)
GS11	Sir James Young Simpson (B)	GS76	Sunita Williams (P)
GS12	Thomas Henry Huxley (B)	GS77	James Watt (P)
GS13	Sir Edwin Ray Lankester (B)	GS78	Andre Marie Ampere (P & M)
GS14	Sir Ronald Ross (B)	GS79	A. Graham Bell (P)
GS15	Hugo De-vries (B)	GS80	Edwin Powell Hubble (A & P)
GS16	Sir Charles Bell (B)	GS81	Rakesh Sharma (A)
GS17	Alfred Russel Wallace (B)	GS82	M.S. Swaminathan (B)
GS18	Sir J. C. Bose (B)	GS83	Robert Hooke (P, B & A)
GS19	Dr. Birbal Sahni (B)	GS84	S.R. Ranganathan (M & Lib.)
GS20	Sunder Lal Hora (B)	GS85	J.B.S. Haldane (B)
GS21	Galileo Galilee (P)	GS86	Guglielmo Marconi (P)
GS22	Sir Isaac Newton (P)	GS87	Wilbur Wright (P)
GS23	Sir C.V. Raman (P)	GS88	Orville Wright (P)
GS24	Dr. H.J. Bhabha (P)	GS89	Neil Armstrong (P & A)
GS25	Archimedes (P)	GS90	Wihelm Roentgen (P)
GS26	Albert Einstein (P)	GS91	S. Chandrasekhar (P & A)
GS27	Thomas Alva Edison (P)	GS92	Lord Kelvin (P & M)
GS28	Robert Boyle (P & C)	GS93	Charles Babbage (P & M)
GS29	Marie Curie (P & C)	GS94	Friedrich Wohler (C)
GS30	Michael Faraday (C)	GS95	Frederick William Herschel (A)
GS31	John Dalton (C)	GS96	J.J. Berzelius (C)
GS32	Dr. P.C. Ray (C)	GS97	James Chadwich (P)
GS33	Dr. H.G. Khorana (B & C)	GS98	Dr. Vijay P. Bhatkar (P)
GS34	Dr. S.S. Bhatnagar (C)	GS99	C.N.R. Rao (C)
GS35	S. Ramanujan (P & M)	GS100	George Boole (M)
GS36	Antoine Laurent Lavoisier (C)	GS101	Albert Abraham Michelson (P)
GS37	William Ramsay (C)	GS102	Stephen Hawking (P & A)
GS38	Humphry Davy (C)	GS103	Amedeo Avogadro (P)
GS39	August Weismann (B)	GS104	Johannes Gutenberg (P)
GS40	Joseph Priestley (C)	GS105	Pierre Curie (P, C)
GS41	Aristotle (B)	GS106	Hans Christian Oersted (P & C)
GS42	Dmitri I. Mendeleef (C)	GS107	Henry Moseley (P)
GS43	Burbank Luther (B)	GS108	John Alexander Reina Newlands (C)
GS44	S.N. Bose (P)	GS109	Camillo Golgi (B)
GS45	M.N. Saha (P)	GS110	Zacharias Janssen (P)
GS46	K.S. Krishnan (P)	GS111	Georg Simon Ohm (P)
GS47	K.N. Bahl (B)	GS112	Johann Wolfgang Dobereiner (C)
GS48	J.J. Thomson (P)	GS113	Thomas Hunt Morgan (B)
GS49	Neils Bohr (P)	GS114	Christian Doppler (P & M)
GS50	Gilbert Newton Lewis (C)	GS115	Girolamo Cardano (P & M)
GS51	A.P.J. Abdul Kalam (P)	GS116	Robert Hanbury Brown (P)
GS52	Dr. Vikram Sarabhai (P)	GS117	Yellapragada Subbarow (B & C)
GS53	Aryabhata (P, A & M)	GS118	Prof. Yash Pal (P)
GS54	Dr. S.S. Joshi (C)	GS119	Josef Stefan (P & M)
GS55	Sir Alexander Fleming (B)	GS120	Melvin Calvin (C)
GS56	D. Mata Parshad (C)	GS121	Venkatraman Ramakrishnan (C)
GS57	Benjamin Franklin (P)	GS122	William Roxburgh (B)
GS58	Ernest Rutherford (P & C)	GS123	Erwin Schrodinger (P)
GS59	Dr. Raj Ramanna (P)	GS124	Nikola Tesla (P)
GS60	Nicholas Copernicus (A & P)	GS125	John Vincent Atanasoff (P)
GS61	Alessandro Volta (P)	GS126	Heinrich Hertz (P)
GS62	Alfred Nobel (C)	GS127	Charles Francis Jenkins (P)
GS63	Anton Henry Bekuerel (P)	GS128	Jacobus Henricus Van'thoff (P & C)
GS64	Atovan Gerok (P)		
GS65	Benjamin Thomson (P)		

GS129	Linus Carl Pauling (B & C)
GS130	Friedrich Wilhelm Osteald (C)
GS131	Svante August Arrhenius (C)
GS132	Prof. S.R. Kashyap (B)
GS133	Frederick Sanger (C)
GS134	Kary Banks Mullis (C)
GS135	Michael Smith (C)
GS136	G.N. Ramachandran (P)
GS137	Alfonso Corti (B)
GS138	Ernst Mayr (B)
GS139	Paul Ethralich (B)
GS140	Thomas Young (P)

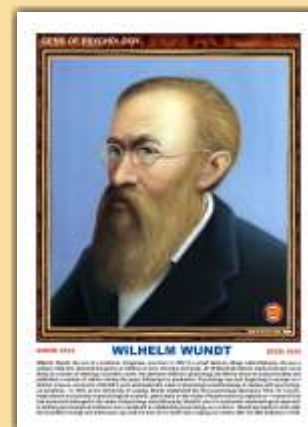
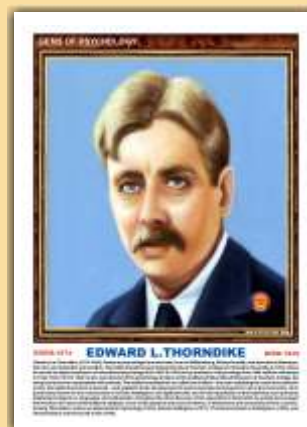
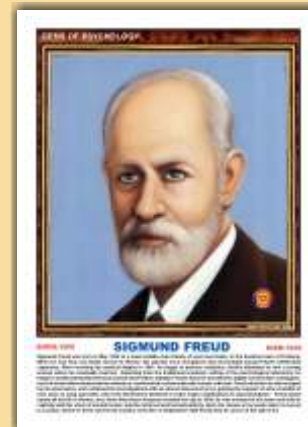


(A) Astronomer, (B) Biologist, (C) Chemist, (M) Mathematician, (P) Physicist

GEMS OF PSYCHOLOGY

Size 31 x 43 Cms Approx (GP01P - GP75P) Each Rs. 340.00
 Size 45 x 60 Cms Approx (GP01PS - GP75PS) Each Rs. 900.00

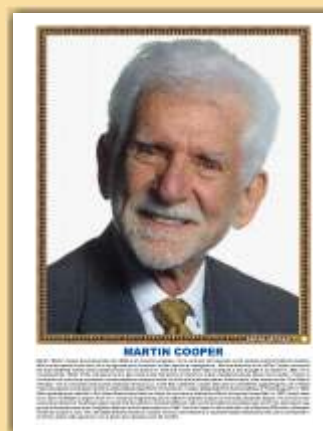
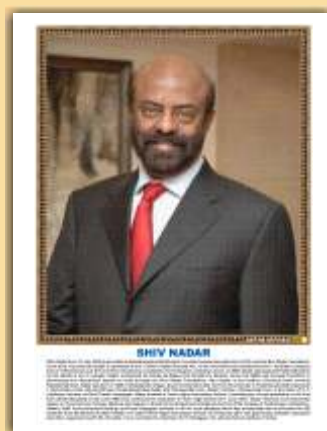
GP01	Abraham H. Maslow	GP39	Herbert Spencer
GP02	Albert Bandura	GP40	Herman Rorschach
GP03	Alfred Adler	GP41	Herman V Helmholtz
GP04	Alfred Binet	GP42	Hermann Ebbinghaus
GP05	Aristotle	GP43	Herry S. Sullivan
GP06	B. F. Skinner	GP44	Immanuel Kant
GP07	C. L. Hull	GP45	Ivan P. Pavlov
GP08	Carl G. Jung	GP46	J. M. Baldwin
GP09	Carl R. Rogers	GP47	J. M. Cattell
GP10	Charles Bell	GP48	J. W. Cannon
GP11	Charles Darwin	GP49	Jean Piaget
GP12	Charles Sherrington	GP50	Johann F. Herbart
GP13	D.O. Hebb	GP51	Johannes P. Muller
GP14	David Hume	GP52	John B. Watson
GP15	David Wechsler	GP53	John Dewey
GP16	Dr. Cyril Burt	GP54	John Locke
GP17	E. B. Titchner	GP55	Joseph Wolpe
GP18	E. C. Toleman	GP56	Julian Rotter
GP19	E. H. Weber	GP57	K. S. Lashley
GP20	Edward L. Thorndike	GP58	Karen Horney
GP21	Edwin Guthrie	GP59	Kurt Goldstein
GP22	Emil Kraepelin	GP60	Kurt Koffka
GP23	Erich Fromm	GP61	Kurt Lewin
GP24	Erik Erikson	GP62	Max Wertheimer
GP25	Ernest Jones	GP63	Melanie Klein
GP26	F. A. P. Aveling	GP64	Neil E. Miller
GP27	F. J. Gall	GP65	Raymond B. Cattell
GP28	Francis Galton	GP66	Rene Descartes
GP29	Frederick Perls	GP67	Rollo Reese May
GP30	G. S. Hall	GP68	Sigmund Freud
GP31	George Kelly	GP69	Thomas Hobbes
GP32	Gordon Allport	GP70	Walter Mischel
GP33	Gottfried W. Liebnitz	GP71	Wilhelm Wundt
GP34	Gustav T. Fechner	GP72	William James
GP35	Hans J. Eysenck	GP73	William Mc-Dougall
GP36	Harlow	GP74	William Sheldon
GP37	Heinz Kohut	GP75	Wolfgang Kohler
GP38	Henry Murray		



FAMOUS PERSONALITIES IN COMPUTER SCIENCE

Size 31 x 43 Cms Approx (FCS01P - FCS12P) Each Rs. 340.00
 Size 45 x 60 Cms Approx (FCS01PS - FCS12PS) Each Rs. 900.00

FCS01	Alan Turing
FCS02	Charles Babbage
FCS03	Dr. Vijay P Bhatkar
FCS04	George Boole
FCS05	Lady Lovelace
FCS06	Mark Zukerberg
FCS07	Martin Cooper
FCS08	Satya N Nadella
FCS09	Shiv Nadar
FCS10	Steve Jobs
FCS11	Sundar Pichai
FCS12	Tim Berners Lee



HEALTH, HYGIENE & SANITATION

On a persistent demand from various Educational Institutions, NGO's, Rural Development Offices, Nursing Institutions we have recently published naturally coloured, useful and authentic charts incorporating all the modern researches and innovations on the subject. The charts are divided into two main topics as below :

HEALTH CARE SERIES

containing 10 Charts English & Hindi combined
Size 50x75 cm.

- | | |
|------|---------------------------------|
| HC01 | * Health Rules |
| HC02 | * Causes of Diseases |
| HC03 | * Prevention of Diseases |
| HC04 | * Effects of Alcohol |
| HC05 | * Tobacco & Habit Forming Drugs |
| HC06 | * Clean Body |
| HC07 | * Clean Water |
| HC08 | * Constituents of Food |
| HC09 | * Malnutrition |
| HC10 | Immunization |

Laminated Each Rs. 72.00

*** Also Available In**

English - Kannada
English - Malayalam

English - Tamil
English - Telugu

Each Rs. 76.00



PREVENT THE DISEASES

containing 24 Charts English & Hindi combined

Each chart depicts the Causes, Symptoms,
Treatments, care to be taken.
Size 50x75 cm.

- | | | | |
|------|----------------|------|----------------------------------|
| PD01 | * Cholera | PD13 | * Dysentery |
| PD02 | * Malaria | PD14 | Hepatitis |
| PD03 | * AIDS | PD15 | Heart Attack |
| PD04 | Plague | PD16 | Diabetes |
| PD05 | Tuberculosis | PD17 | Asthma |
| PD06 | Leprosy | PD18 | Arthritis |
| PD07 | Influenza | PD19 | Thyroid |
| PD08 | Jaundice | PD20 | Blood Pressure |
| PD09 | Cancer | PD21 | Dengue NEW |
| PD10 | * Typhoid | PD22 | Measles NEW |
| PD11 | Viral Diseases | PD23 | Food Poisoning NEW |
| PD12 | Chicken Pox | PD24 | Poliomyelitis (Polio) NEW |

Laminated Each Rs. 72.00

*** Also Available In**

English - Kannada
English - Tamil

English - Malayalam
English - Telugu

Each Rs. 76.00



DETAILED HUMAN PHYSIOLOGY CHARTS

Printed in original colours. Everything requisite for thorough understanding of Human Physiology in its broad out line included. Each size 70 × 100 cm.

Laminated

The Skeleton**	HPM01
Human Muscles**	HPM02
Blood Circulation**	HPM03
Nervous System**	HPM04
Digestive System**	HPM05
Eye**	HPM06
Ear**	HPM07
Kidney, Skin & Excretory Organs**	HPM08
The Respiratory System**	HPM09
Human Heart**	HPM10
Endocrine System	HPM11
Reproductive (Male)*	HPM12
Reproductive (Female)*	HPM13
Human Embryology	HPM14
Lymphatic System	HPM15

English-Hindi combined

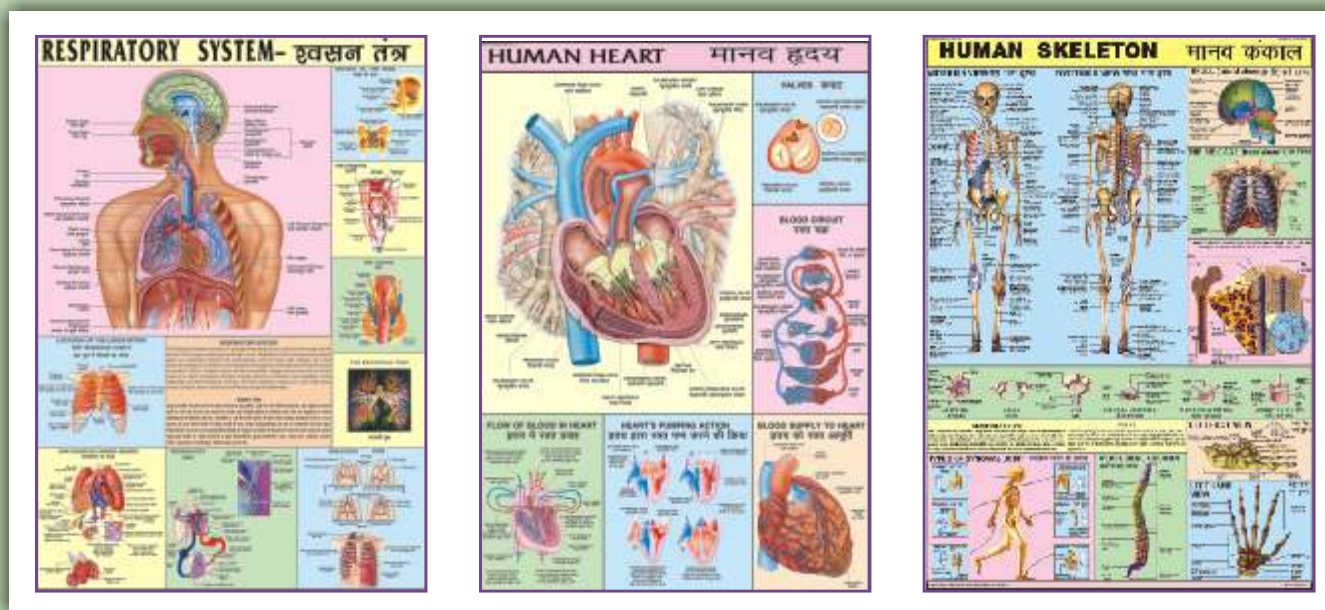
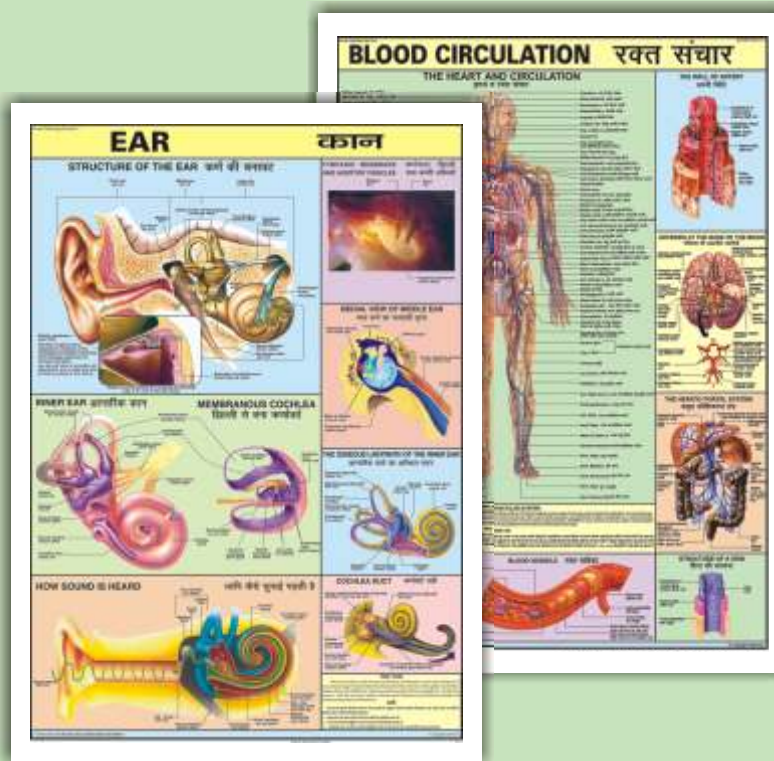
Each Rs. 120.00

Available in following languages also

* English-Kannada * English-Malayalam

English-Tamil # English-Telugu

Price Rs. 130.00 each



ELEMENTARY HUMAN PHYSIOLOGY

HPS01 to HPS11 Elementary Human Physiology

Size 50 × 75 cms

Laminated

Each chart Rs. 72.00

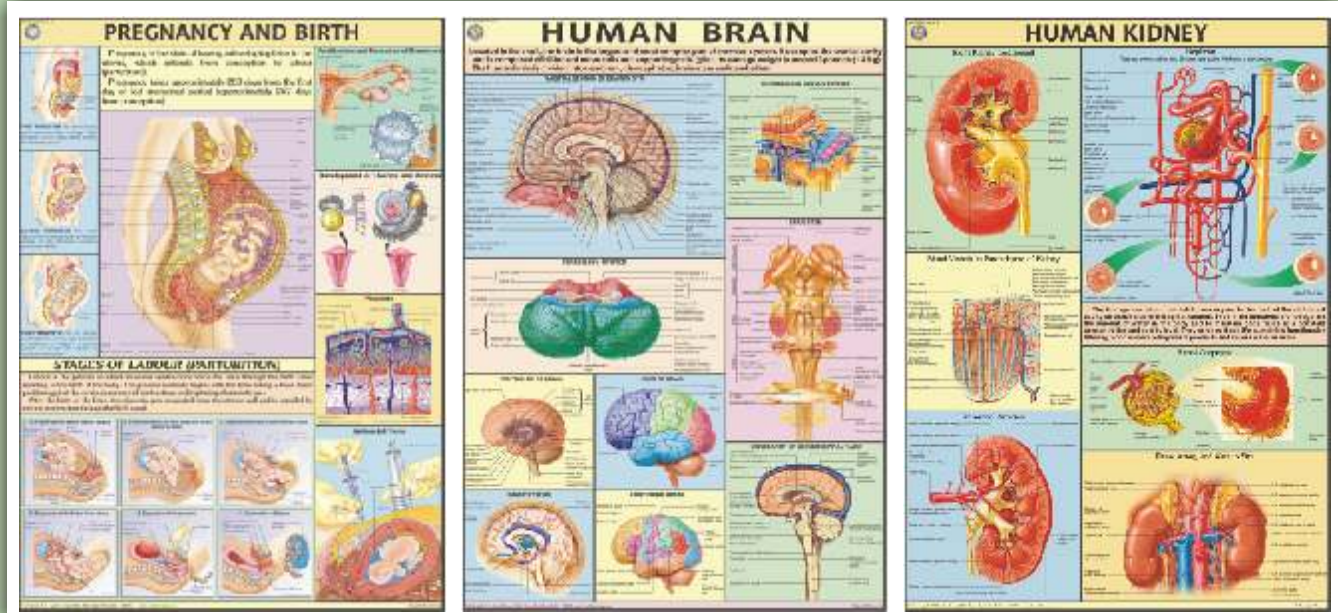
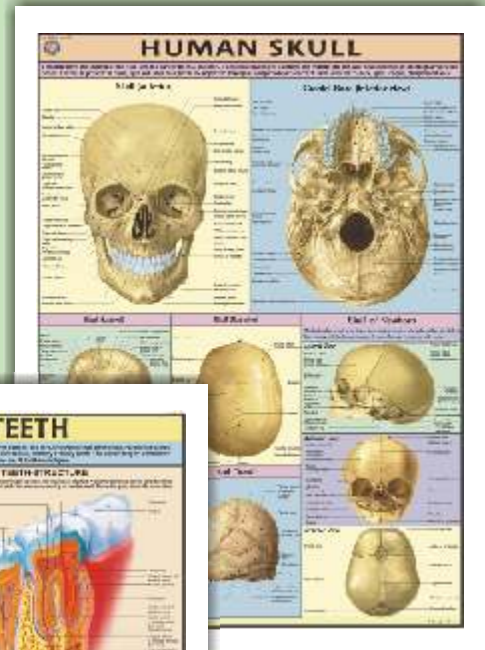
Available in English-Hindi only

For details please see the first 11 charts given above.

DETAILED HUMAN PHYSIOLOGY CHARTS

Printed on Synthetic in original colours . Everything requisite for thorough understanding of Human Physiology in its broad out line included. Each size 70 × 100 cms. Available in English only. Price Each chart Rs. 180.00

The Skeleton	HP01S
Muscles	HP02S
Blood Circulation	HP03S
Nervous System	HP04S
Digestive System.....	HP05S
Eye	HP06S
Ear	HP07S
Kidney, Skin & Excretory Organs	HP08S
The Respiratory System	HP09S
Human Heart	HP10S
Endocrine System	HP11S
Reproductive (Male)	HP12S
Reproductive (Female)	HP13S
Human Embryology	HP14S
Lymphatic System	HP15S
Human Brain.....	HP16S
Human Teeth	HP17S
Pregnancy & Birth.....	HP18S
Human Kidney	HP19S
Urinary Tract.....	HP20S
Human Skull	HP21S
Ear, Nose, Throat	HP22S
Liver, Gall bladder & Pancreas.....	HP23S
Human Lungs	HP24S
Joints of the Body	HP25S
Immune System.....	HP26S
Human Skin	HP27S
Movable Joints (Synovial).....	HP28S
Human Spinal Cord	HP29S
Menstrual Cycle	HP30S
Contraception (Birth Control).....	HP31S



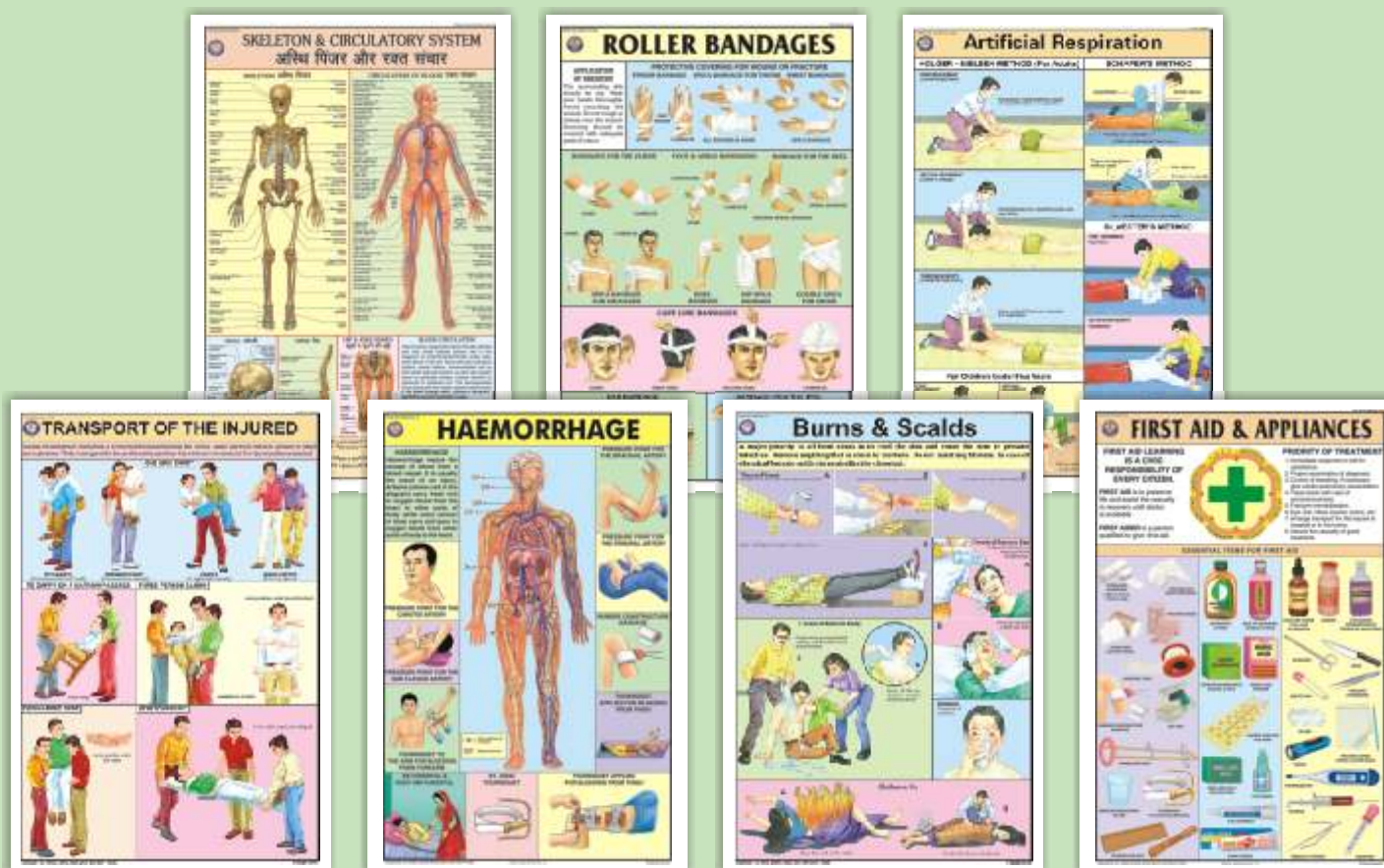
FIRST AID CHARTS

Each Chart size 50 x 75 cm - English and Hindi combined, Laminated

- FA01 Skeleton & Circulatory System:** Gives the basic knowledge of human body.
- FA02 Triangular Bandages:** Slings, knots and bandages for various parts of body.
- FA03 Roller Bandages:** A protective covering for wound or fracture, methods of bandaging.
- FA04 Fractures:** Simple & compound fractures, treatment of fracture in parts of body.
- FA05 Artificial Respiration:** Showing Schafer's method, Silvestor's method & Holger Nielsen's method of artificial respiration. Outline of Respiratory system and what is suffocation.
- FA06 Transport of the injured:** How to carry an injured person so that minimum movement of the injured portion is assured.
- FA07 Unconsciousness:** Sun Stroke, fainting, epileptic fit, Infantile convulsions, drowning.
- FA08 Haemorrhage:** Location of main arteries in the body and pressure points where when pressed, bleeding can be controlled.
- FA09 Electric Shock Treatment:** How to remove live wires, treatment & whom to contact.
- FA10 Emergency Resuscitation:** Mouth to mouth and Mouth to nose method. How to give external cardiac chest compression.
- FA11 Removal of foreign bodies from eye, ear, nose:** Various precautionary methods to remove the foreign bodies and to ensure safety of organs.
- FA12 Burns & Scalds:** Type of burns, treatment of chemical burns, clothing on fire.
- FA13 Snakes & Their Bites:** Type of snakes, Identification of snakes on the basis of appearance, treatment of snake bite.
- FA14 Poisons and their Antidotes:** Types of poisons, their symptoms & their treatment.
- FA15 Outline of First Aid & Appliances:** What is First Aid, Qualities of a First Aider and essential appliances to give first aid.

Each Rs. 72.00

All the above Charts are available in English only also.



Some Special Charts

- CD05** Life saving first aid instruction size 70x100 cm
- STG21** Fire & Fire Extinguishers size 58 x 90 cm

Rs. 130.00
Rs. 150.00

COLOURED CHARTS ON YOGA

Each Chart size 50 x 75 cms - Hindi & English combined, Laminated

Price Each chart Rs. 72.00

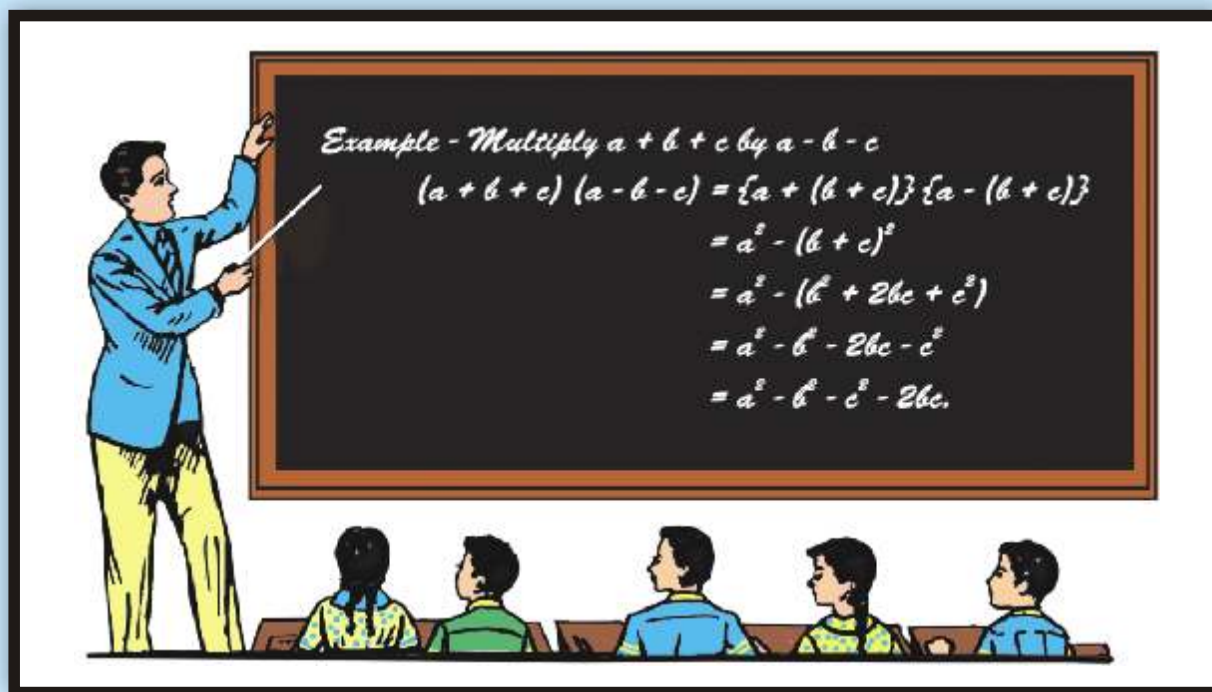
A faithful study and following the instructions as laid down in these charts, a vast treasure of **super powers** can be explored and developed within ourselves. For all round Physical, Mental, Emotional, Intellectual & Spiritual development of mind and body.

- YO01 1. Shuddhi Kriyas-Shat Karmas:** Kunjal-Vaman Dhauti, Kapal Bhati, Ghrit Neti, Sutra Neti, Jal Neti, Vastra Neti, Dand Dhauti, Nauli Karma, Tratak, Basti etc.
- YO02 2. Shankh Prakshalan:** Kagasan, Tadasan, Triyak Tadasan, Triyak Bhujangasan, Kati Chakrasan, Udarakarashanasan, Shavasan.
- YO03 3. Surya Namaskar:** A series of twelve steps, a complete exercise of all the parts of body. It makes the body strong, beautiful & active.
- YO04 4. Yog Mudras, Padmasan & Matsyasan:** These remove Spinal & Cervical pain, Asthma, Diabetes, Mental weakness, Gastric troubles, Knee pain, Eye Defects.
- YO05 5. Paschimottanasan & Ardh Matsyendrasan:** Spine becomes flexible and Elastic, the Abdominal organs- Digestive system, Nervous system are toned up.
- YO06 6. Vajrasan, Ustrasan & Supt Vajrasan:** These remove cervical and slipdisc defects diseases of chest, lungs, heart, abdomen, kidney etc. , excess fatness of Abdomen and back
- YO07 7. Bhujangasan, Shalabhasan, Dhanurasan & Mayurasan:** Abdominal Organs are toned up. Spine is strengthened. Remove Gastic Intestinal disorders etc. Mental Powers are developed.
- YO08 8. Pawan Muktasan & Chakrasan:** Keep Spine Young & Flexible. Improve Eye sight, Hearing, Smell Taste & Circulation of Blood to the brain.
- YO09 9. Sarvangasan & Halasan:** Reduce fat, make arms, legs, Blood circulation, Digestive system, Liver strong and maintains youthful look etc.
- YO10 10. Bandhas & Pranayams:** Mool Bandh, Jalandhar Bandh, Uddiyan Bandh, Mahabandh. Pranayam Mudra, Lom-vilom Pranayam, Nadishodhan Pranayam, Agnisar Kriya.
- YO11 11. Spine & Related Organs:** Composition of spine, Positions of Psychic centres and Endocrine Glands are shown.
- YO12 12. Healthy Eye :** Eye washing, tratak on rising sun, Eye exercises, Palming.

All the above Charts are available in English only also.



LAMINATED BLACK OR GREEN BOARDS



ENTIRELY A NEW CONCEPT IN LAMINATION

These replace glass blackboards. Most durable and smooth & hard surface. These are unbreakable. Complete with metal frame and hooks for hanging. Please indicate the shade preferred (Black or Green).

Size in cm	Size in Inches	Item code	Price with regular frame	Item code	Price with heavy angle
80 × 60 cm	32" × 24"	GB01RF or BB01RF	Rs. 1450.00	GB01HF or BB01HF	Rs. 1600.00
120 × 80 cm	48" × 32"	GB02RF or BB02RF	Rs. 2625.00	GB02HF or BB02HF	Rs. 2900.00
160 × 120 cm	64" × 48"	GB03RF or BB03RF	Rs. 5800.00	GB03HF or BB03HF	Rs. 6300.00
240 × 120 cm	96" × 48"	GB04RF or BB04RF	Rs. 7250.00	GB04HF or BB04HF	Rs. 7900.00

BLACK BOARD INSTRUMENTS

DS03 MAP POINTER wooden one Meter long	Each Rs. 55.00
MAP POINTER Telescopic made of Brass nickelled	
DS04 60 cm Pen Type	Rs. 95.00
DS05 90 cm	Rs. 150.00
DS06 120 cm	Rs. 180.00
DS07 Chalk Holder	Each Rs. 100.00
DS09 Black Board Duster wooden superior	Each Rs. 30.00
DS10 Deluxe quality made of plastic	Each Rs. 13.00

DS11 Chalk white Box of 50	Each Rs. 11.00
DS12 Chalk coloured Box of 50	Each Rs. 18.00
Black board Geometrical Instruments Box : containing pair of set squares, protractor, compass, divider, scale & duster. made of plastic	
DI01 Good Quality Plastic	Each Rs. 350.00
DI02 Extra Superior Quality Plastic	Each Rs. 500.00
DI03 Superior Quality Wooden	Each Rs. 700.00
DI04W Compass Wooden	Each Rs. 130.00
DI04P Compass Plastic	Each Rs. 65.00

STANDS FOR THE DISPLAY BOARDS

DS51 Black Board Stand Small For Boards upto 90 × 60 cm	Each Rs. 680.00
DS52 -do- -do- Medium - upto 120 × 90 cm as illustrated	Each Rs. 850.00
DS53 -do- -do- Large - upto 160 × 120 cm	Each Rs. 1500.00
DS54 Accessories Tray for Boards	Rs. 150.00
DS55 Powder Coated Collapsible Easle	Rs. 1500.00
DS56 Nickelled Heavy base stand for boards smaller than 90x60 cm only	Each Rs. 1800.00
DS57 For boards 90x60 cm or larger a pair will be required.	Per pair Rs. 3600.00



KANSIL'S WHITE BOARDS

A versatile presentation aid. It dispenses away the use of chalk on the black board. This is infact the cleanest method used in conference rooms and lecture rooms. These are framed with aluminium angle and large size boards can conveniently be used as projection screen for OHP and slide projectors. The instructor can write with a specially designed marker pens available in 4 beautiful colours and the writing can be wiped off with an ordinary cloth. The size and the rates are as below:-

Size in Cm	Size in Inches	With Regular Frame	With Heavy Frame
60 x 30	24" x 12"	WB01RF 580.00	WB01HF 660.00
60 x 45	24" x 18"	WB02RF 790.00	WB02HF 880.00
90 x 60	36" x 24"	WB03RF 1420.00	WB03HF 1600.00
120 x 60	48" x 24"	WB04RF 1940.00	WB04HF 2175.00
120 x 90	48" x 36"	WB05RF 2800.00	WB05HF 3050.00
150 x 90	60" x 36"	WB06RF 4300.00	WB06HF 4800.00
150 x 120	60" x 48"	WB07RF 4350.00	WB07HF 4950.00
180 x 120	72" x 48"	WB08RF 5450.00	WB08HF 6000.00
240 x 120	96" x 48"	WB09RF 7250.00	WB09HF 7900.00

WBM Marker Pen - Red, Blue, Black, Green set of 4

WB21 Duster for White Board Superior

WHITE BOARD POPULAR QUALITY Size 60 x 45 cm



Set Rs. 160.00

Each Rs. 35.00

Each Rs. 270.00

KANSIL'S NOTICE BOARDS

A versatile system of displaying typed or handwritten notices with the help of drawing pins. The system is oriental but with a very modern and elegant look covered with Blazer Cloth and framed with aluminium angle. Available colours are green, blue or maroon. It is available in following convenient sizes :

Size in Cm	Size in Inches	With Regular Frame	With Heavy Frame
80 x 60	32" x 24"	NB01RF 1550.00	NB01HF 1800.00
120 x 80	48" x 32"	NB02RF 2650.00	NB02HF 3000.00
160 x 120	64" x 48"	NB03RF 4600.00	NB03HF 5000.00
240 x 120	96" x 48"	NB04RF 6400.00	NB04HF 7100.00



GOLDSIGN™ VELVET DISPLAY BOARDS

Size (in cm) (HxW)	Price per Board	Size (in cm) (HxW)	Price per Board
GSB01 30x15 cm	640.00	GSB06 91x61 cm	3330.00
GSB02 45x30 cm	1240.00	GSB07 122x61 cm	4200.00
GSB03 61x45 cm	1980.00	GSB08 122x91 cm	5660.00
GSB04 61x61 cm	2350.00		



GSB26 Letters/Figures size

12mm (1/2")

Rs. 2.50 each

GSB27 Letters/Figures size

25mm (1")

Rs. 3.50 each

GSB28 Letters/Figures size

37mm (1 1/2")

Rs. 5.50 each

GSB29 Executive Table Plates (24.5x4.5cm approx)

Rs. 360.00 each

GSB30 Executive Table/Door Plate (32x6.5cm approx)

Rs. 480.00 each

MAP STANDS

MAP STORAGE STAND

DS101 As illustrated for keeping 24 maps made of iron painted

Rs. 1700.00

DS102 For keeping 36 maps made of Iron painted

Rs. 2100.00

MAP DISPLAY STAND

DS103 The map hangs on the stand nearest to the students; it is easy for the teacher also to emphasise on a point. All folding sturdily built of iron pipes. Height Adustable. Very convenient to carry from one class to another. Painted

Each Rs. 1300.00



Map Storage Stand



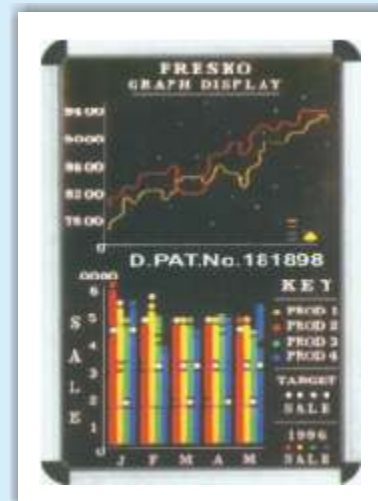
Map Display Stand

PRESKOGRAPH AIDS & INTERCHANGEABLE BOARDS

It is a unique and effective system of interchangeable letters & figures and graph symbols with which any kind of information can be displayed in an elegant way by joint pressing the letters and figures and graph symbols in the closed perforated back ground. The same can be changed at your will.

It is ideal for instantaneous layout planning & the first hand Knowledge of coming events. These are must for institutions & offices.

Size of Panel with Frame		Total No. of Letters & Figures in each set	Price with Deluxe frame	
in cms.	in inches		with letters	without letters
45x30	18 x 12	250	PB02WL 950.00	PB02 650.00
61x30	24 x 12	305	PB03WL 1125.00	PB03 760.00
61x45	24 x 18	410	PB04WL 1580.00	PB04 1090.00
91x61	36 x 24	750	PB05WL 3125.00	PB05 2200.00
122x61	48 x 24	950	PB07WL 3800.00	PB07 2630.00
122x91	48 x 36	1050	PB08WL 4700.00	PB08 3400.00
122x122	48 x 48	1150	PB09WL 5950.00	PB09 4475.00
152x122	60 x 48	1350	PB12WL 7250.00	PB12 5500.00
183x122	72 x 48	1350	PB15WL 8400.00	PB15 6600.00
244x122	96 x 48	1750	PB16WL 11000.00	PB16 8650.00



Extra letters and figures can also be had

PB26 ½" size	per 100	Rs. 120.00	PB35 Hindi letters ¾"	set of 500	Rs. 900.00
PB27 ¾" size	per 100	Rs. 130.00	PB36 Hindi letters 1"	set of 500	Rs. 1020.00
PB28 1" size	per 100	Rs. 140.00	PB37 Hindi letters 1½"	set of 500	Rs. 1120.00
PB29 1 ½" size	per 100	Rs. 185.00	PB38 Line Divider 6" long	Per 100	Rs. 255.00
PB30 2" size	per 100	Rs. 310.00	PB39 Comma, Full Stop Large	Per 100	Rs. 110.00
PB31 Roman Type ¾" Size	per 100	Rs. 140.00	PB40 Direction Pointer	Per 100	Rs. 850.00
PB32 Roman Type 1" size	per 100	Rs. 175.00	PB41 Slick Pointers	Per 100	Rs. 130.00
PB33 Roman Type 1 ½" size	per 100	Rs. 230.00	PB42 Nail Timple(Plucker)	Per 100	Rs. 750.00
PB34 Comma/ Full stop	per 100	Rs. 100.00			



DOOR PLATE ALUMINUM
With Acrylic covers

PB76 Senior 31.5 x 13.5 cm	Rs. 625.00
PB77 Junior 31.5 x 8.5 cm	Rs. 525.00
(Without letters)	



CONFERENCE NAME (Table Top) PLATES
(without letters)

PB78 Senior 31.5 x 6.5 cm	Rs. 280.00
PB79 Junior 23.5 x 4 cm	Rs. 170.00
PB80 Standard set of 100 letters (¾")	Rs. 130.00

All the Letters, Figures and Punctuation signs and graph symbols are available in Red, Blue, Green and Yellow colour also in sets of 100. Rate of Coloured letters will be 10% extra.

Standard set with boards are supplied in white colour only.

BONES & SKELETON MODELS

XC-101



XC-101 Human Skeleton

- Size: 170 cm life size.
- Made of PVC plastic.
- Removable arms and legs.
- Features nerve branches, vertebral artery and herniated lumbar disc.
- Skull includes movable jaw, cut calvarium, suture lines and three removable lower teeth.
- Mounted on a sturdy 40cm wide base.
- Washable & Unbreakable
- Ideal for teaching the basics of human anatomy.

• Price Rs. 14400.00

XC-101A Human Skeleton With Muscles & Ligaments

- Life size 170 cm
- With muscles & ligaments
- On pelvic mounted stand with 40cm wide base.
- The skeleton allows you to demonstrate the hand painted muscles origins & flexible joints ligaments.
- This skeleton is made of durable plastic.
- Skull includes movable jaw, cut calvarium, suture lines and three removable lower teeth.
- Washable & Unbreakable
- Ideal for teaching the basics of human anatomy.

• Price Rs. 25800.00

XC-101A



SK-160



SK-160 Skeleton with Stand

- Real life model
- Size 170 cm
- Durable parts
- Stand with wheel
- Can be employed as a visual aid in the instruction of anatomy to students of medicine.

Price Rs. 26500.00

SK046



SK046 Mini Skeleton

- Real life Model
- Detachable joints & Durable Parts
- ABS Stand
- Size: 46 cm(18")

• Price Rs. 1450.00

XC-102B Human Skeleton

- Size 85cm Medium.
- Made of PVC plastic.
- Shows nerves and blood vessels.
- Depicts the position, course and distribution of main arteries and peripheral nerves
- Can be employed as a visual aid in the instruction of anatomy to students of medicine.

• Price Rs.5000.00

XC-102B



XC-105C

Didactic Flexible Vertebral Column with Pelvis

- This model has a fully flexible spine throughout and features different sections of the spinal column in different color: cervical vertebrae, thoracic vertebrae, lumbar vertebrae, sacrum and the coccyx.

• Price Rs. 5800.00



XC-105C

XC-126

Vertebral with Pelvis & Femur Heads

- Life size model
- Shows all significant features of each vertebra, including spinal cord, nerve roots, the vertebral artery, a herniated disc and vertebral notch etc.
- Special features : inflexible 72cm tall vertebral column complete with pelvis, femur heads, sacrum, occipital bone, vertebral artery, all nerve branches and herniated lumbar disc.
- Deluxe chrome stands 85 cm high.

• Price Rs. 5500.00

XC-126





XC-109 Shoulder Joint

- Size: 16 x 12.5 x 20cm. Life size.
- Ball and socket joint.
- To illustrate abduction, adduction, anteversion, retroversion & internal/external rotation.
- Includes flexible artificial ligaments.

• Price Rs. 1300.00



XC-110 Hip Joint

- Life size, on stand.
- Ball and socket joint
- Demonstrates anteversion, retroversion, abduction & internal/external rotation. Includes flexible, artificial ligaments.

• Price Rs. 1300.00

XC-111 Knee Joint

- Size: 12.5 x 12.5 x 32cm.
- Hinge joint, Synovial joint
- Life size, on stand.
- Demonstrates flexion, extension, and internal/external rotation. Includes flexible, artificial ligaments.

• Price Rs. 1300.00



XC-112 Elbow Joint

- Size: 12.5 x 12.5 x 32cm.
- Hinge joint, Pivot joint
- Life size, on stand
- Demonstrates flexion, extension, and internal/external rotation of the radius.
- Includes flexible, artificial ligaments.

• Price Rs. 1300.00



XC-113 Foot Joint

- The model is made of PVC.
- Hinge joint.
- Gliding joint.
- Natural Size.

• Price Rs. 1300.00



XC-114 Hand Joint

- The model is made of PVC plastic.
- Hinge joint.
- Saddle joint.
- Condyloid joint
- Natural size.

• Price Rs. 1300.00

XC-113A Life-Size Foot Joint with Ligaments

- Demonstrate all of foot functionality and the external anatomical structures. Including flexible, artificial ligaments.
- Made of PVC plastic.
- Natural size.

• Price Rs. 1500.00



XC-114A Life-Size Hand Joint with Ligaments

- Demonstrate all of hand functionality and the external anatomical structures.
- Including flexible, artificial ligaments. Made of PVC plastic. Natural size.

• Price Rs. 1500.00



XC-130 Disarticulated Skeleton

- This economical life size disarticulated skeleton will encourage students to learn the various bones of an Adult Human. It is a visual aid for instructions of anatomy to students, doctors, nurses or anyone interested in human skeleton.
- About 200 different bones.

• Price Rs. 10000.00

ZX-1601 Bone Microstructure

- Made of HSP resin having long durability.
- Size : 30x20x16 cm.
- Total 19 positions are shown.
- 3-D section of a lamellar bone.
- Model shown various planes in cross and longitudinal section.
- The model helps to understand the typical elements of a lamellar bone along with the Volkmann and Haversian system, spongy and compact parts, endosteum, cortical substance and osteocytes.



• Price Rs. 4500.00

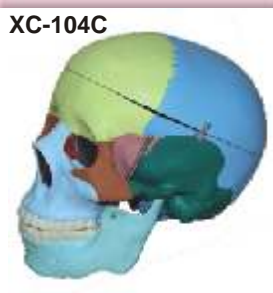
XC-104



XC-104 Life Size Skull

- This economical life-size adult plastic skull features a moveable jaw, cut calvarium, suture lines and 3 removable lower teeth-incisor, cuspid and molar. Dissectible into 3 parts.
- Price Rs. 1950.00

XC-104C



XC-104C

Life Size Coloured Skull

- This is advanced model of XC-104 life-size skull, bones painted in different colors for precise study. Can be disassembled into 3 parts.
- Price Rs. 2700.00

XC-104E



XC-104E Skull Model with 8 Parts Brain

- This Model is based on XC-104, includes 8 parts brain: frontal and parietal lobe, temporal and occipital lobe, encephalic trunk & cerebellum.
- Price Rs. 4400.00

NEW

ZX-1201



ZX-1201 Human Fetal Skull

- Made of HSP resin having long durability.
- Natural size. Movable lower jaw.
- Total 41 parts labeled.
- Beautifully painted in colours.
- Showing incomplete ossification of skull bones, fontanelles, frontal and parietal eminences, various skull bones like occipital, temporal, sphenoid, frontal, mandible and maxilla.

Price Rs. 1500.00

NEW

ZX-1202



ZX-1202

Human Skull Model Dx.

- Made of HSP resin having long durability.
- Size: Natural size.
- Dissectible into 3 parts with moveable jaw, cut calvarium.
- Well illustrated and informative.
- Model is accurately made from actual specimen references, photographs and encyclopedia reference under expert guidance.
- Model is a great teaching tool for anatomy lessons.

Price Rs. 3400.00

NEW

XC-123



XC-123 Adult Male Pelvis

These model sizes are just the same as realities and made of PVC plastic. Comparing a model of male pelvis with a female one, the differences between the two can be listed as following:

Male

- Pelvis shapes
- Pelvis cava
- Aperture pelvis Superior
- Sacrum
- Angles of pelvis arch
- Symphysis pubica

Female

- Long and narrow
- Like a funnel
- Heart-like
- Long and narrow
- 70-75 degree
- Long and narrow
- Price Rs. 1875.00

XC-124



XC-124 Adult Female Pelvis

- Short and broad
- Like a barrel
- Rounded
- Broad and short
- 90-100 degree
- Short and broad
- Price Rs. 1875.00

XC-125

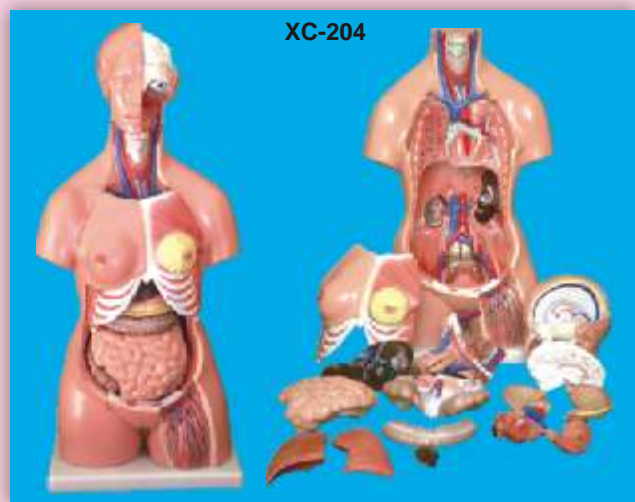
Female Pelvic Muscles & Organs

- Natural size.
- Made of PVC plastic.
- Price Rs. 2650.00



XC-125

HUMAN ANATOMY



XC-204 Unisex Torso 23 parts 85CM

- Size: 33.5" tall (85cm), Made of PVC plastic.
- Features an exposed spine with removable vertebra and spinal cord segments.
- Interchangeable male and female genitalia.
- The female organs include a fetus in the womb.
- Dissectible into 23 parts: torso, female breast plate, head, eyeball, brain, vertebra spinal nerves, lung (2 parts), heart (2 parts), liver, kidney, stomach (2 parts), intestines (4 parts), male genitalia (2 parts), female genitalia with fetus (3 parts).
- Mounted on a plastic base.

• Price Rs. 13900.00

MK064 Visible Expectant Mother Anatomy Kit



MK064

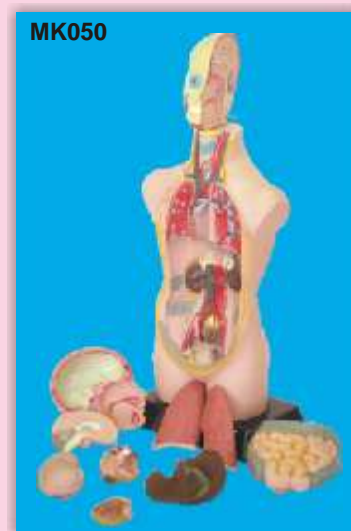
- Size 55 cm.
- Dissectible in 48 pieces.
- Detailed instruction manual included.
- This visible anatomy model realistically shows the important parts of human body. Learn how body works by taking the model apart & see how the different organs work together to keep us alive & healthy.

• Price Rs. 7600.00

MK050 Human Torso

- Hand Painted in Vivid & Natural Colours.
- 50cm High
- 11 Dissectible Parts
- ABS Base
- Fully Illustrated Colour Instruction Manual

Price Rs. 7550.00



MK050

DIGESTIVE SYSTEM



ZX-1301A

Human Digestive System

- Made of HSP resin having long durability.
- Relief model of human digestive system in median section dissectible into 3 parts.
- Duodenum, caecum and rectum are opened. Rectum is unfolded.
- Transverse colon and front half of the stomach are removable.
- The model features the oral cavity, pharynx, esophagus, stomach, liver with gall bladder, pancreas, GI tract and spleen. Shown 56 positions.
- Life size.
- Mounted on sturdy wooden frame for easy display.
- Size : 40x80 cm.
- Beautiful painted in bright colors.

• Price Rs. 4500.00

XC-311 Liver, Pancreas and Duodenum Model



XC-311

- To study the basic structure of the liver, spleen, blood vessels and pancreas.
- External structure are illustrated as well as the pancreatic duct of the pancreas.
- This model also shows the abdominal aorta and inferior vena cava.
- Life-size. Dissectible into 3 parts.
- Made of PVC.
- Size: 23x12.5x26cm.

• Price Rs. 2000.00

XC-312 Liver Model

- An economical way to study the basic structure of the liver. The complex vessels network in the opened liver, displayed in different colors on this model : hilus vessels, extra-hepatic and intra-hepatic bile ducts. Liver mounted on stand.

• Price Rs. 3100.00



XC-312



ZX-1402

ZX-1402 Human Stomach, Pancreas & Duodenum

- Made of HSP resin having long durability.
- Total 70 parts are labeled.
- The model shown different layers of stomach wall.
- Separated into 3 parts.
- Mounted on stand with base for easy display.
- Model depicts lower esophagus, associated blood vessels and sectioned duodenum and pancreas (revealing large ducts up to its aperture).
- Model is anatomically a correct replica and is great for anatomy lessons.
- Well illustrated and formative.
- Size : 20x15x10 cm
- Beautiful painted in bright colors.
- Price Rs. 2100.00

GD/A12006**Appendix and Caecum**

- Made of advanced PVC.
- Mounted on a stand, Natural size.
- Shows wall of the caecum and appendix.
- Separated into 2 parts
- Shows 17 positions

Rs. 3300.00

GD/A12006

**XC-306 Stomach Model**

- Made of hard plastic, Magnified 2 times the natural size
- Shows the morphology of the stomach in a distended state.
- With the longitudinal section, the model shows the structures of the gastric folds, pyloric valve, pyloric sphincter muscles, gastric mucosa and the transitional mucosa of the gastric-esophagus.
- Price Rs. 1700.00

XC-306

**HEART & CIRCULATORY SYSTEM**

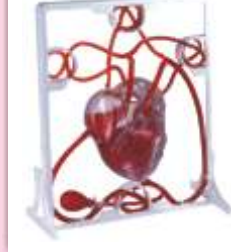
ZX-1302

ZX-1302 Human Circulatory System

- Made of advanced HSP resin having long durability.
- Half life sized relief model.
- Mounted on wooden base for easy display.
- Beautifully painted in bright colours.
- Anatomically accurate teaching aid of the human circulatory system .
- Model shows following anatomical structures : Arterial and venous system, Heart showing chambers, Lung, Liver, Spleen, Kidneys, Partial skeleton
- 81 parts labeled in total.

MK 019 Pumping Heart

MK 019



- A 3-D working plastic heart model with clear chambers. Squeeze bulb pumps simulated blood through clear heart chambers just like real one.
- Complete heart model scale with display stand.
- Complete instruction manual, easy to assemble.

• Price Rs. 4500.00

• Acrylic Paints and Brush are included.

• Price Rs. 1550.00

PD-002 Heart Model

- Full Size
- Durable ABS Base
- Detachable Cover Piece
- Highly Realistic Decoration

• Price Rs. 1925.00

PD-002

**XC-307 Jumbo Heart Model**

- Size: 25 x 23 x 23 cm. Made of PVC plastic.
- Helps to understand the external features and internal structures of the heart, and its relation with the large blood vessels.
- Clear conception of routes of the systemic & pulmonary circulation.
- Dissectible into 3 parts
- 4 times enlarged.

• Price Rs. 2550.00

XC-307

**DENTAL MODELS**

TH001

TH001

Dental Care Model

- 2 Times Full-Size
- Giant Teeth with Toothbrush
- Price Rs. 2800.00

TH002

Dental Model Small

- 1.5 x Model with Hinge
- Price Rs. 1200.00



TH002

SKIN & EAR

ZX-1604



ZX-1604 Skin Model

- Model shows 3-D section of human skin.
- Size : 21x10x25 cm.
- The model represents differentiated skin layers, hair, sweat glands, sebaceous glands, blood vessels, nerves and receptors for detailed examination.
- Model is mounted on sturdy wooden board for easy display.
- 35 parts labeled in total.
- Made of advanced HSP resin having long durability.

• Price Rs. 1650.00

XC-313



XC-313 Skin Model Enlarged

- A greatly enlarged (105 times) cross sectional view of the human skin showing three layers and a close-up view of a hair follicle, sweat gland, fatty tissue and more. Front, side and back view.
- Size: 27 x 10 x 31cm. Mounted on a plastic base, it shows the structures of the human scalp.
- Structure of the skin: epidermis, dermis, hypodermis.
- Appendages of the skin: the sweat glands, the sebaceous glands, the hairs, Blood vessels and nerves of the skin.

• Price Rs. 2000.00

XC-313-2



XC-313-2

Skin Block Model

- This model shows a section of human skin in three dimensional forms. Hair, sebaceous and sweat glands, receptors, nerves and vessels are shown in detail.
- 70 time enlarged.

• Price Rs. 3200.00

ZX-1401 Human Skin

ZX-1401



- The skin relief model of a skin section of the head.
- Made of HSP resin with long lasting durability.
- Size : 30x35 cm
- Delivered on sturdy wooden base.
- Skin section portrays the anatomy of the skin at 70 times life size and shows :- Representation of hair follicles with sebaceous glands, Sweat glands, Receptors, Nerves, Blood Vessels, Different layers of the skin.
- Total 31 parts are labeled.

• Price Rs. 1100.00



XC-303C

XC-303C Ear Model New Style Giant Size

- Dissectible in 6 parts.
- Made of PVC Plastic.
- Size 33x15x23 cm.

Price Rs. 2100.00

EYE

XC-316 Giant Eye Model

XC-316



- Size: 15.5cm. The model is made of PVC. Mounted on a plastic stand.
- 6 times enlarged Model. The different parts of the eyeball model are detachable.
- Tunica external: showing cornea & sclera with attachments of ocular muscles & optic nerve.
- Tunica media: showing the iris, the ciliary body and the choroid.
- Tunica internal is retina.
- Refraction media: showing the lens and the vitreous body.

• Price Rs. 2000.00

XC-316B Eye with Orbit

XC-316B



- The model shows the eyeball with optic nerves and muscles in its natural position in the bony orbit. Dissectible into 10 parts. 3 times enlarged.

• Price Rs. 4350.00

RESPIRATORY SYSTEM

ZX-1306 Human Respiratory System

NEW

ZX-1306



- Made of advanced HSP resin.
- Size : 40x80cm. Mounted on wooden sturdy base board for easy display.
- Well illustrated and informative.
- Upper half of the model displays nasal cavity, oral cavity, trachea, bronchia, bronchial tree in pulmonary lobe, right and left lungs cut open, heart in situ, pulmonary blood vessels and diaphragm with muscles attached to it.
- 24 positions are marked in upper part model.
- Lower half of the model shows enlarged pulmonary acinus displaying pulmonary alveoli, alveolar saccules, bronchial artery and veins and alveolar capillary network.
- Total 14 positions are marked in lower part model.
- Model is accurately made from actual specimen references, photographs and encyclopedia reference under expert guidance.

• Price Rs. 4500.00

XC-301 Human Larynx Model Magnified

- Size : 11.5x11x24 cm, 3 parts dissectible.
- A functional model, On base 3 times enlarged.
- Shows movements of epiglottis & cartilages in the voice box.
- Helps to understand the morphology & structure of the respiratory tract and phonetic organ.

• Price Rs. 1200.00



XC-302 Pulmonary Alveoli Model Magnified

- Size: 26 x 15 x 35 cm.
- Made of PVC plastic and mounted on plastic base.
- The model shows the small branches of principal bronchus:
- Section of bronchiole of no cartilage.
- The relation between pulmonary alveoli & terminal bronchiole.
- The structure of alveolar sac and alveolar duct
- The capillary rete in the alveolar septa.

• Price Rs. 1700.00



XC-309



XC-309 Model of the Anatomical Nasal Cavity

- This model helps the students to understand:
- External nose : shows the section of the nasal bones and cartilages.
- Nasal cavity : on the lateral nasal wall show the superior, middle and inferior nasal conchae project medially into the nasal cavity forming the superior, middle and inferior nasal maxillary sinuses.
- Paranasal sinuses : shows the frontal, sphenoid and maxillary sinuses.

• Price Rs. 1250.00

XC-330 Model of the Transparent Lung Segment

- Presents 10 segments in the right lung and 8 in the left. The distributions of the bronchial tree can be observed through the transparent lungs.
- Right lung: right upper lobe (3 segments), right middle lobe (2 segments), right inferior lobe (5 segments)
- Left lung: left upper lobe (4 segments), left inferior lobe (4 segments).
- Distribution of the bronchial tree: right bronchus, left bronchus.
- Hilus of lung. The lung made of transparent plastic. The trachea & bronchial tree is made of PVC.

• Price Rs. 5000.00



XC-320 Larynx, Heart and Lungs Model

- Life size.
- Dissectable in 7 parts.
- Made of PVC plastic.
- Size 36x23x12 cm.

• Price Rs. 5600.00



XC-324 Model of the Head

- The relief model of human head shows all relevant structures in great details.
- The high quality model is delivered on a base board for easy display
- Natural size.
- Showing interior parts of the oral cavity and pharynx with network of vessels.

• Price Rs. 3950.00



EXCRETORY SYSTEM

ZX-1303 Human Excretory System



- Model is made of advanced HSP resin to maintain long durability.
- Delivered on wooden baseboard for easy display.
- Size : 40x80 cm & 36 parts are labeled in total.
- Model of human excretory system shows the structures of the retroperitoneal cavity which includes : descending aorta, inferior vena cava, renal veins and arteries, ureter, urinary bladder cut open to show trigone and other structures, adrenal glands, both kidneys, iliacal vessels and prostate gland.
- Left kidney and left adrenal gland in section.
- Model also shows testis and penis in section.
- The model has anatomical details that makes it a great teaching aid.

• Price Rs. 4500.00



ZX-1603 Kidney Microstructure

- It is made of advanced HSP resin and is mounted on sturdy wooden base for easy display.
- Size: 30x20x24 cm & 45 parts are labeled in total.
- Beautifully painted in advanced colours.
- A complete 3-D model shows 5 sides view of following structures in great details : kidney in section, parenchyma of kidney and nephron, renal corpuscle and associated structures, loop of henle and associated structures.

• Price Rs. 4500.00

XC-331

Male Urogenital System

- This is intended for schools as a visual aid in teaching physiology and hygiene to help the students to understand the external features of the urogenital system of the kidney, urinary bladder, penis and testicle.
- Made of PVC plastic.
- Size 20x20x50 cm.

• Price Rs. 1750.00



XC-331

XC-332

Female Urogenital System

- This model serves as a teaching model for teachers to teach the female urogenital system. The model shows kidney, ureters, urinary bladder, uterus, accessories of uterus, vagina, ovary membrane, ligaments, uterus ligament and its artery etc.
- Made of PVC plastic.
- Size 20x20x50 cm.

• Price Rs. 1750.00



XC-332

XC-310-3 Human Kidney with Adrenal Gland

- Life-size model features the kidney, adrenal gland, renal and adrenal vessels and upper portion of the ureter.
- Dissectible into 2 parts to reveal the cortex medulla, cortex vessels and renal pelvis.
- Model can be removed from the stand for instruction and patient education.
- Size: 12.5 x 12.5 x 20 cm.

• Price Rs. 1550.00



XC-310-3

XC-333 Urinary System Model

- The Model shows the structures of retroperitoneal cavity, pelvis with bones and muscles, inferior vena cava, aorta with its branches, upper urinary tract, kidney with adrenal gland, ureter, bladder, etc.
- Dissectible into 4 parts.

• Price Rs. 7100.00



XC-333



GYNAE & OBSTETRIC MODELS

GD/A42004

Embryo Model

- Mounted on stand.
- Made of Advanced PVC.
- 4 weeks old embryo.
- Shows 12 positions.

• Price Rs. 3200.00



GD/A42004

GD/A42010/1 Human Placenta

- Mounted on stand.
- Made of Advanced PVC.
- Shows the structure of placenta and the relation between placenta and umbilical cord.
- 7 positions are displayed.

• Price Rs. 3200.00



GD/A42010/1

REPRODUCTIVE SYSTEM

ZX-1304

Human Reproductive System Male

- Made of HSP resin for long durability.
- Upper half part shows median section of the system showing both internal and external organs of the system.
- Internal organs (accessory organs) shown in great detail are epididymis, vas deferens, ejaculatory ducts, urethra, seminal vesicles, prostate gland and bulbourethral gland.
- External structures shown are penis, scrotum and testicles.
- Total of 24 parts are labeled in upper half model.
- Lower half shows the model of

ZX-1304

- scrotum and contents along with the penis.
- Total of 17 parts are labeled in lower half model.

Price Rs. 4500.00

ZX-1305

Human Reproductive System Female

- Made of advanced HSP resin and beautifully painted in advanced colours.
- Upper half model shows both ovaries, left ovary in section, fallopian tubes with fimbriae, uterus, cut open vagina to show vaginal folds and cervix, bladder with cut open urethra, labia and rectum.
- Total 20 positions are marked in upper half model.
- Lower half model shows adnexa of uterus.
- Total 36 positions are marked in lower half model.
- Size : 40x80 cm
- Model is a great teaching tool for anatomy lessons.

ZX-1305

• Price Rs. 4500.00

BRAIN & NERVOUS SYSTEM

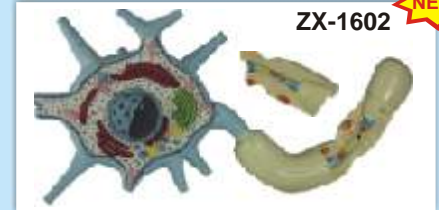
ZX-1307 Human Nervous System

- Half life size relief model of human nervous system.
- Made of HSP resin and delivered on wooden base board.
- Model is a schematic representation of the central and peripheral nervous system, including spinal nerves radiated from central nervous system to other parts of body.
- 39 positions are displayed.
- Price Rs. 4500.00



ZX-1602 Neuron

- Motor neuron model in three-dimension.
- Made of high grade synthetic polymer having long durability.
- Size : 30x20x12cm
- Beautiful painted in bright colors.
- Well illustrated and informative.
- The membranous covering has been cut away to expose the cytological ultra structure, organelles and inclusions within the cell body.
- Model shows branching dendrites, myelin-wrapped axon and node of Ranvier.
- A section of the axon can be lifted off to view the tightly-wound layers of the enveloping myelin sheath, neurolemma and the schwann cell.
- Total 19 positions are marked in the model.



• Price Rs. 3300.00

XC-308 Brain with Arteries

XC-308

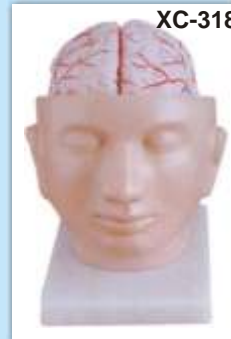


- Made of PVC plastic.
- Dissectible into 8 parts. On base.
- Natural size: 18.5x14x13.5cm.
- Facilitates a correct understanding of the features of the brain and its arterial supply as a whole, Relations between their component portions.
- External features of the brain: cerebral hemisphere, brain stem, cerebellum.
- The arterial supply of the brain: sources, vertebral, internal carotid arteries, arteria supply of the cerebellum and cerebrum.

• Price Rs. 1750.00

XC-318 Brain With Arteries on Head

XC-318



- This model shows the brain structure inside the skull. Two halves brains can be disassembled into: frontal with parietal lobes, temporal with occipital lobes, half of brain stem, half of cerebellum. Life-size, dissectible into 9 parts.

• Price Rs. 3650.00

CPR MANIKIN

MB001B+ CPR Training Manikin (Torso)



- The Manikin is the only manikin in the market which includes both Adult and Child CPR simulator in one product.
- Economic and profitable product.
- Light weight: 2.2Kg makes easier storing and transport for trainers.
- The selector on the back allows to chose Adult or Child position.
- Adult and child position include a clicking sound for checking the correct compression depth according to Guidelines 2015.
- "N" position on the selector allows to check without a clicking sound and without depth limit the acquired skills.
- The Manikin breathing system is real and

exclusive on the market.

- The unique valve design allows to be connected nose-mouth-lung.
- The non-return system of the valve doesn't allow students inhale air from the lung bag helping to avoid Contagions.
- If the exclusive articulated head is not tilted properly and the nose is not pinched there will be no chest rise.
- Manikin is essential as complement of the AED trainer (not included).
- The torso design of Manikin and its size is proper to use AED trainer.
- The Manikin skin material is proper for using AED training pads and easy cleaning.

• Price Rs. 16000.00

NEW BIOLOGY MODELS

ZX-3101 Animal Cell



- Model of HSP resin having long durability.
- Size : 30x40x10 cm.
- The model shows the form and structure of a typical animal cell as viewed under an electron microscope.
- Important organelles shown in the raised relief 3d model are : nucleus, nucleolus, mitochondria, golgi

apparatus, secretory vesicle, smooth endoplasmic reticulum, rough endoplasmic reticulum, ribosomes, peroxisomes, centriole, lysosome, pinocytotic vesicle, membranes

- Total 19 parts are labeled.
- Delivered on stand with base.

• Rs. 2050.00

ZX-3201 HYDRA

- 4 piece model showing detailed anatomical structures of hydra.
- Made of HSP resin and delivered on wooden base board.
- Significant anatomical features shown include ectoderm, mesoglea, coelenteron, male testis and female egg cells, buds, hypostome, nematoblast

cells, cnidoblast etc.

- 28 parts are labeled in total.
- Model is accurately made from actual specimen references, photographs and encyclopedia reference under expert guidance.
- Model is beautifully painted in bright advanced colours.

• Rs. 1650.00



DN001 DNA

- 12 base pairs mounted on a central steel axis.
- A pack of 24 Deoxyribose Sugar Caps.
- 2 white ribbons with alternating cut gaps and 'P' marks in a transparent plastic case.
- Size : 10x10x45 cm

Price Rs. 1600.00



Build your own Human Anatomy Museum

- New type of Puzzle • Highly detailed finish • Collectible Quality • Dissectable in small parts • Display Stand •



SK007

SK007

Eyeball Anatomy Model

- Size 14 cm
- 35 pieces set.
- Price Rs. 1350.00



SK008

SK008

Human Body Anatomy Model

- Size 12.7 cm
- 32 pieces set.
- Price Rs. 1350.00

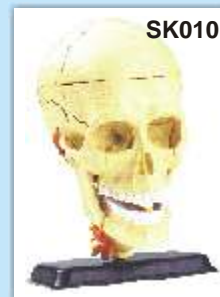


SK009

SK009

Heart Anatomy Model

- Size 14 cm
- 31 pieces set.
- Price Rs. 1350.00



SK010

SK010 Cranial Nerve Skull Anatomy Model

- Size 9 cm
- 39 pieces set.
- Price Rs. 1350.00

COMMUNITY HEALTH MODELS

- Made of high grade materials having long durability
- Mounted on sturdy wooden frame for easy display
- Supplied with well illustrated informative literature

- Well labeled parts
- Beautifully painted in bright colors
- Model is a great teaching tool for nursing students

COMMUNITY HYGIENE

ZX 7101 - Sanitary Well	Price Rs. 5000.00
ZX 7102 - Insanitary Well	Price Rs. 5000.00
ZX 7103 - Deep and Shallow Well	Price Rs. 5000.00
ZX 7104 - Deep Tube Well	Price Rs. 6000.00
ZX 7105 - Step Well	Price Rs. 5500.00
ZX 7106 - Berkefeld Filter	Price Rs. 5000.00
ZX 7107 - Slow Sand Filter	Price Rs. 6500.00
ZX 7108 - Rapid Sand Filter	Price Rs. 5500.00

ENVIRONMENTAL SANITATION

ZX 7201 - House Drainage System	Price Rs. 6500.00
ZX 7202 - Chamber Type Incinerator	Price Rs. 6500.00
ZX 7203 - Activated Sludge Process	Price Rs. 6500.00
ZX 7204 - Bore Hole Latrine	Price Rs. 5000.00
ZX 7205 - Dug Well Latrine (Pit Latrine)	Price Rs. 5000.00
ZX 7206 - Trench Latrine	Price Rs. 5500.00
ZX 7207 - Septic Tank Latrine	Price Rs. 6000.00
ZX 7208 - Biogas Plant	Price Rs. 6500.00
ZX 7209 - Smokeless Chulha	Price Rs. 6000.00



TELESCOPES

Telescope (TS302)



- 20x.40x.60x Eyepiece,
- 30mm Objective Lens
- Diagonal Mirror,
- 41cm (16") ABS Body
- Unique Design with Handy Adjustable Knob
- 25cm (10") Tripod
- Price Rs. 2375.00

Telescope Astrolon (TS506)



- 345x Magnification
- Objective Lens 50mm
- 89cm (35") Aluminium Tripod
- Barlow Lens 2.3x
- Finderscope 6x25 mm
- Diagonal Viewer, Space Map
- Focal Length 600mm
- 3 eyepieces 4mm, 12.5mm, 20mm
- Instruction Manual

• Price Rs. 7500.00

525x Astrolon Handheld Telescope (TS771)

- Space Map, Instruction Manual
- Objective Lens Ø70mm, Focal Length 700 mm
- 31.7mm Eyepiece 4mm, 9mm, 12.5mm, 20mm
- 122cm Aluminum Tripod, Precision Control System
- Platform Locking Lever (Release Telescope body for hand carrying)
- Pan-handle (Control the vertical movement of telescope)
- Panning lock nut (Control rotation movement of telescope)
- Arm guide lock, Diagonal Viewer
- Accessory Tray, Barlow Lens 3x, Erecting Eyepiece 1.5x
- Barlow Lens 3x, Erecting Eyepiece 1.5x
- Finderscope 6x 25mm



• Price Rs. 11200.00

675x Reflector Telescope (RT976)

- Precision Reflecting Mirror Ø76mm
- Focal Length 900 mm
- Eyepiece 4, 12.5 & 20
- Barlow Lens 3x, Finderscope 6x 25mm
- Fine Adjustment, Accessory Tray
- Screwdriver, Space Map
- Instruction Manual,
- Alt-Azimuth Mount
- 114cm (45") Aluminum Tripod



• Price Rs. 13500.00

BINOCULAR



BN1050

10 x 50MM BINOCULARS (BN1050)

- Focussing Knob
- Neck strap
- Eye piece with rubber coating
- 50mm dia objective
- Rubber covered body
- Superior Lenses
- Price Rs. 3500.00

20 x 50MM BINOCULARS (BN2050)

Same as above

Price Rs. 4000.00

MICROSCOPE

MICROSCOPE SET (MS006)

(For use upto middle class)

Power 100x-300x-600x set of 28 pieces as detailed

- 20 cm Microscope
- Prepared Slides-2
- Blank Slides-6
- Statical Slide Covers-6
- Blank Labels-6
- Pair of Tweezers-1
- Collecting Vials-2
- Stirring Rod-1
- Spare Bulb-1
- Condenser Lense Cap-1
- 3x.6x Magnifier-1
- Instruction Manual
- Window Box Size: 8¾"x3½"x8½"
- Per Set Rs. 1825.00



MS006

MICROSCOPE SET (MS002) with Light & Projector Power 100x-900x Set of 63 pieces (For use upto secondary level)

- 23 cm Microscope with 8x, 25x, 50x objective Lenses & Die-Cast Body-1
- Huygen's Eyepiece 12x-18x Zoom-1
- Micro-Data Bank-1
- Micro Slicer-1
- Blank Slides-12, Cover Glasses-12
- Blank Labels-12, Spare Bulb-1
- Statical Slide Covers-12
- Vial of Eosin-1, Collecting Vials-2
- Vial of Gum Media-1
- Stirring Rod-1, Petri Dish-1
- Vial of Methylene Blue-1
- Scalpel-1, Needle-1
- Pair of Tweezers-1
- Condenser Lense Cap-1
- Graduated Cylinder-2
- Instruction Manual-1
- Window Box Size: 15½"x3¼"x13¾"
- Safety Goggles-1
- Rs. 3890.00



MS002

VIDEOSCOPE



Age 8+

VS468

VIDEOSCOPE (VS468) with 21 cms Screen Power 20x.40x.60x.80x Set of 57 pieces as detailed

- Prepared Slides-2
- Blank Slides-10
- Cover Glasses-12
- Statical Slide Covers-12
- Blank Labels-12
- Scalpel-1
- Needle-1
- Pair of Tweezers-1
- Spatula-1
- Stirring Rod-1
- Petri Dish-1
- Spare Bulb-1
- Collecting Vials-2
- Instruction Manual
- Box Size : 14"x8"x13"
- Per Set Rs. 3900.00

SCIENCE TEACHING KITS

CHEMISTRY LAB KIT (CM001)

- (10) Chemicals
- (8) Litmus Papers
- 80 ml Glass Beaker
- (2) Test Tubes with Stoppers
- Test Tube Rack
- Test Tube Holder
- (2) Stopper-Corks
- (3) Stopper-Corks with Holes
- (3) Glass Tubes
- Rubber Tube
- Spout Brush
- Funnel
- (6) Filter Papers
- Alcohol Lamp
- (2) Measuring Spoons
- Stirring Rod
- Safety Goggles
- Instruction Manual with 130 Experiment Procedures & Results
- Price Rs. 2600.00



Age 10+



Age 8+

SIMULATED FROG DISSECTING KIT (VT021)

- Authentically detailed frog Body
- Removable soft texture organs
- Cross sections show muscle structure
- Glow-In-Dark "X-RAY" included
- Child safe lab tools included
- Price Rs. 4200.00

6 in 1 Solar Kit (EL315)

This do it yourself Solar kit enables children assembling the parts and transforming into six (6) different types of motor driven apparatus actuated by Solar Power.

- Solar Robot
- Solar Wheeler
- Solar Windmill
- Solar Plane
- Solar Helicopter
- Solar Airboard

• Price Rs. 1600.00



Age 10+

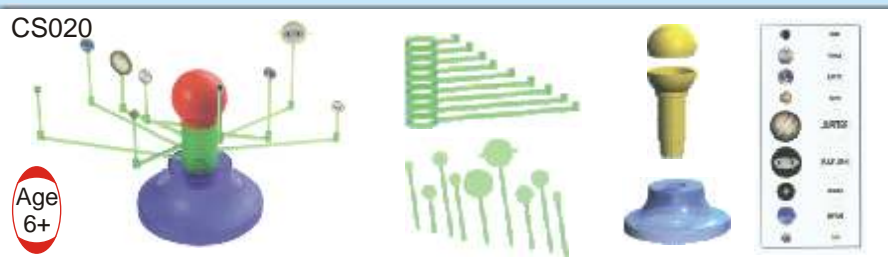
CS015 STUDENT BALANCE KIT

- 4 x Weights
- 4 x Arms
- 2 x Weighing pans
- 2 x Levers
- 2 x Triangle axials
- 2 x Pointers
- 2 x Scales
- 1x Central Axial
- 1x Pivoted weight
- 2 x Arms side holders
- Rs. 900.00



Age 6+

CS020 MINI SOLAR SYSTEM



Age 6+

- 9 x Supports
- 9 x Planets
- 1 x Sun pillar
- 1 x Module base
- 1 x Sticker

• Rs. 900.00

SCIENCE TEACHING KITS



TK4003

Age
8+

TK4003 Wake Me Robot

- Place it next to your bed at night.
- In the morning when light falls on it, the robot will start to move and buzz.
- Easy to assemble - no soldering required.

• Rs. 2000.00



TK7074

Age
8+

TK7074 Go Weather

- Over 30 fascinating activities all about weather and climate.
- Kit includes a real wind speed indicator.
- Build your own barometer, weather vane, rain gauge and hydrometer.
- Observe the weather traits and see how they'll affect tomorrow's weather!
- Make a rainbow, produce clouds, lightning, rain and even a thunderstorm

• Rs. 2570.00



TK7086

Age
8+

TK7086 My Senses

- This kit is part of our Body Awareness Science Series, exploring the five senses: sight, hearing, smell, taste and touch.
- Perform over 50 fascinating experiments.
- Use a genuine stethoscope, make a telescope with real lenses and create rainbows with a prism.
- Prepare perfume and stink bombs with chemistry lab equipment.
- Learn how to read and send messages in Braille. Also includes many activities suitable for party games.

• Rs. 3550.00



TK7072

Age
8+

TK7072 Go Circuit

- Specially designed kit to learn, play and have fun safely with basic electric circuits.
- Assemble more than 24 different and fascinating circuits for motor, buzzer, lights and other circuits.
- Make alarm and games, and even invent your own circuits.
- Additional fun applications of circuits are explained in manual.
- Batteries required.

Rs. 2570.00



TK7076

Age
8+

TK7076 Go Electronic

- Build 6 exciting electronic devices - a burglar alarm, a fire alarm, a musical organ, a siren, a sound effects generator and a radio.
- Console and electronic components included.
- Easy to design your own additional circuits.
- Battery required.

• Rs. 2250.00



TK7094

Age
8+

TK7094 Vision

- A simple explanation of how the eye works.
- Activities to demonstrate some of the eye's functions.
- Eye testing equipment to test the eyes for normal sight, short sightedness and long sightedness.
- Eye testing charts included.

• Rs. 1920.00



TK8200

Age
10+

TK8200 Physics

- 250 exciting & captivating experiments which will introduce you to the fascinating field of Physics.
- Experiment with Electricity, magnetism, motors, gases, liquids, heat, sound, force, pressures and motion.
- Understand nature's basic laws.

• Rs. 3500.00



TK8405

Age
10+

TK8405 Solar Power

- 150 Challenging Experiments.
- Convert solar energy. Build a solar electric generator, motor, water heater, furnace, thermometer, crane and solar energy mobiles.
- Unique experiments with colour optics, electroplating, stroboscopes, thermodynamics and Moire patterns.

• Rs. 3650.00



TK8740

Age
8+

TK8740 Hydrolab

- Complete greenhouse system for cultivating plants and vegetables in an "indoor" environment, without soil, using a modern Hydroponics system.
- The kit comes with a base, adjustable translucent observation cover, four growing trays, fertilizer tank, safe chemicals and bedding for propagating the growth of plants.

• Rs. 3850.00



TK8360

Age
10+

TK8360 Super Chem 150

- 150 exciting science activities using only products found in the kitchen.
- There are over forty pieces of equipment enabling you to carry out all of the 150 activities.
- These activities include the following science phenomena: chemistry, optics, bubbles, magnetism, physics and chromatography.
- The kit includes an attractive four colour book.

• Rs. 3550.00



TK8650

Age
10+

TK8650 Ecology

- 150 Experiments dealing with ecology and the world around us.
- Topics include bacteriology, climate, water, air, nature, chemical analysis, water and soil pollution, recycling and acid rain.
- Understand the problems and improve the environment.

• Rs. 3500.00



TK8950

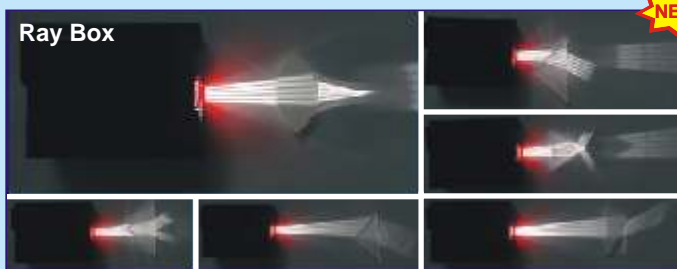
Age
10+

TK8950 Energy

- More than 200 experiments.
- This kit is designed to give an understanding of the various kinds of energy sources, how to transform them and use them.
- Learn about windmills, levers, solar energy, batteries, electricity, electrochemistry and more.
- Make your own simple machines.
- All necessary lab equipment included.

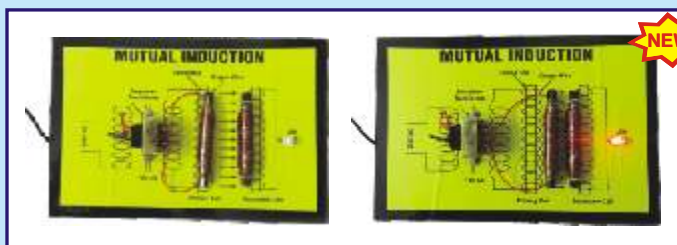
• Rs. 3950.00

SCIENCE WORKING MODEL

**SWM001 Ray Box**

- Standard light source for ray optics experiments.
- Multi-slit comb produces a bright and broad fan of parallel incident ray streaks.
- It is easy to use, extremely durable and the rays produced are bright enough to be seen clearly.
- Different lenses and prisms are included.

• Price Rs. 1200.00 Set

**SWM002 Mutual Induction**

- Model is very effective for understanding the concept of mutual induction, magnetic flux and emf.
- This model shows the phenomenon in which change of current in one coil causes an induced emf in another coil placed near the first coil.
- The coil in which current is changed is called primary coil and the coil in which emf is induced is called secondary coil.

• Price Rs. 600.00 each

**SWM003 Electric Motor**

- This model shows a simple way to convert the electric energy into useful **work**, or mechanical energy, by machines called electric motors.
- With the help of this model student can learn how Electric motors work due to **electromagnetic interactions**: the interaction of **current** and a **magnetic field**.

• Price Rs. 400.00 each

SWM007 Electric Generator

- This electrical generator converts mechanical energy into electrical energy.
- It is based on the principle of production of dynamically induced e.m.f (Electromotive Force).
- Whenever a conductor cuts magnetic flux, dynamically induced e.m.f. is produced in it according to the Faraday's Laws of Electromagnetic Induction. This e.m.f. causes a current to flow in the circuit.

• Price Rs. 1200.00 each

**SWM004 Rain Alarm**

- Rain alarm model is an easy project which will give the alarm when there is rain, so that we can make some actions and save the rain water.
- Student can use this concept in the application of irrigation field, home automation, communication, automobiles etc.
- This modal shows the simple and reliable circuit of rain water alarm which can be constructed at low cost.

• Price Rs. 325.00 each

**SWM005 Laser Security Alarm**

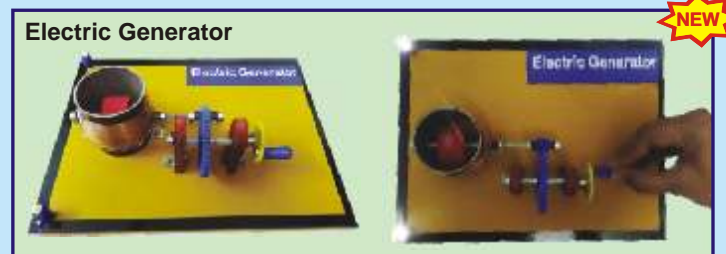
- This laser Security alarm is based on the interruption of Laser beam.
- A low cost Laser pointer is used as the source of light beam.
- When somebody breaks the laser path, the alarm will be generated for few seconds.
- With the help of this modal student can understand the working concept of Diode, Resistance, PCB, LDR, LED & Buzzer.

• Price Rs. 400.00 each

**SWM006 Syringe Generator**

- This generator model is very simple.
- The model consists of an old syringe, two strong neodymium magnets, an insulated copper wire (30-gauge) and an LED.
- Magnets are placed inside the barrel of the old syringe. The magnets are loose and move freely inside the barrel.
- When syringe is shaken vigorously, an induced e.m.f. is produced in the coil due to cutting of magnetic flux and the LED glows.

• Price Rs. 260.00 each



VISUAL TEACHING AIDS

OHP 250S KANSIL'S OVERHEAD PROJECTOR :

- Low voltage
- Latest Design
- Single Halogen lamp 24V-250W
- Rack & Pinion Focusing System
- Light weight.
- Metal Body
- Motorised cooling System
- Intensity Control

Rs. 7100.00 each

OHP 250T KANSIL'S OVERHEAD PROJECTOR :

- Low voltage
- Latest Design
- Halogen lamp 24V-250W
- Rack & Pinion Focusing System
- Equipped with dual bulb system
- Light weight.
- Metal Body
- Motorised cooling System
- Intensity Control

Rs. 7600.00 each

SP150 Slide Projector Manual :

- Versatile design
- Halogen Lamp 24V-150W
- Noiseless cooling system
- Slide carrier for 2 slides
- Rigid construction
- Height adjustable
- Manual Focusing

Rs. 4000.00 each



OPTIONAL ACCESSORIES

OA01 Projection Screen 70" x 52" (175 x 130 cms) with folding tripod stand.	Each Rs. 2650.00
OA02 -do- 60"x60" (150x150 cms) - do -	Each Rs. 2650.00
OA03 -do- 90"x72" (225x180 cms) - do -	Each Rs. 6500.00
OA04 Map Screen made of thick white rexine with roller 175 x 135 cms.	Each Rs. 1200.00
OA11 Overhead Projector marker set of 7 pens including Eraser Pen.....	Per set Rs. 400.00
OA12 Blank Overhead Projector Transparencies - 210 x 297 mm. Packet of 100 sheets.....	Per Pkt Rs. 550.00
OA21 Bulb for OHP 24v-250W	Each Rs. 220.00
OA22 Bulb for Slide Projector 24V-150W	Each Rs. 220.00
OA31 Laser Pointer Pen Type with AAA size batteries.	Rs. 1050.00
OA32 Laser Pointer Pen type with button cells	Rs. 450.00

Globe is a spherical representation of the Earth. See the world in its proper perspective. Spin a globe and land where you will. Discover a place. Remember a place you've never been. People and places, future and past, ideas, history, customs, borders, mysteries, space and time. A globe is a reservoir for all of this. To spend time with a globe is to wonder and it's good to wonder, because it enhances your imagination.



Scanglobe
by Replogle Globes

ILLUMINATING, POLITICAL-CUM-PHYSICAL GLOBE

Manufactured by Replogle Globes, USA, World's largest globe manufacturers



Unlit position shows
Physical features



Lit position shows
Political features



Time Dial



Available in
★ 30 cm dia
★ 25 cm dia

OVERHEAD PROJECTOR TRANSPARENCIES

OT01 Botany set of 75
 OT02 Zoology set of 75
 OT03 Animal Cell & Tissues set of 15
 OT04 Chick Embryology set of 20
 OT05 Frog Development set of 15
 OT06 Mitosis set of 9
 OT07 Meiosis set of 12
 OT08 Physics set of 50

OT09 Chemistry set of 40
 OT10 Human Physiology set of 50
 OT11 Sense organs set of 20
 OT13 First Aid set of 50

Price per transparencies Rs. 40.00



2"×2" COLOURED 35 mm SLIDES

HEALTH SECTION

PREVENT THE DISEASES

each set contain 20 slides

SPD01 Cholera
 SPD02 Malaria
 SPD03 Aids
 SPD04 Plague
 SPD05 Tuberculosis
 SPD06 Leprosy
 SPD07 Influenza
 SPD08 Jaundice
 SPD09 Cancer
 SPD10 Typhoid
 SPD11 Viral Diseases
 SPD12 Chicken Pox
 SPD13 Dysentery
 SPD14 Hepatitis
 SPD15 Heart Attack

SPD16 Diabetes
 SPD17 Asthma
 SPD18 Arthritis
 SPD19 Thyroid
 SPD20 Blood Pressure

HEALTH CARE

each set contain 20 slides

SHC01 Health Rules
 SHC02 Causes of Diseases
 SHC03 Prevention of Diseases
 SHC04 Effects of Alcohol
 SHC05 Tobacco & Habit Forming Drugs
 SHC06 Clean Body
 SHC07 Clean Water
 SHC08 Constituents of Food
 SHC09 Malnutrition

SHC10 Immunization

OTHERS

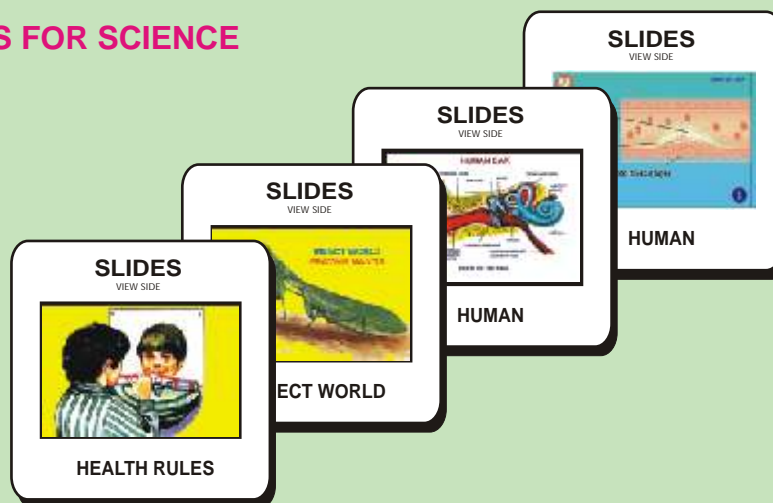
SH01 Human Physiology set of 50
 SH03 Yogan set of 20
 SH04 Vitamin set of 10
 SH06 Human Body set of 10
 SH07 First Aid set of 50
 SH09 Mothercraft set of 30
 SH11 Child Welfare set of 20
 SH12 Family Planning set of 100

Price per slide Rs. 12.00

SLIDES FOR SCIENCE

SSC01 Primary Science For Class I set of 40
 SSC02 Primary Science For Class II set of 40
 SSC03 Primary Science For Class III set of 40
 SSC04 Primary Science For Class IV set of 50
 SSC05 Primary Science For Class V set of 50
 SSC06 Science For Class VI set of 50
 SSC07 Science For Class VII set of 50
 SSC08 Science For Class VIII set of 100
 SSC09 Science For Class IX set of 100
 SSC10 Science For Class X set of 100
 SSC11 Physics set of 100
 SSC12 Chemistry set of 100
 SSC13 Biology set of 100

Price per slide Rs. 12.00



ZOOLOGY SECTION

SZ01 Anatomy of Frog set of 30
 SZ02 Anatomy of Rabbit set of 20
 SZ03 Amoeba & Paramecium set of 20
 SZ04 Animal Histology set of 30
 SZ05 Animal Kingdom set of 30
 SZ06 Animal World set of 40
 SZ07 Beaks & Feet of Birds set of 20
 SZ08 Birds set of 30
 SZ09 Cockroach set of 20
 SZ10 Earthworm set of 20
 SZ11 Chick Embryology set of 20
 SZ12 Frog Embryology set of 15

SZ13 Rabbit Embryology set of 20
 SZ14 Evidence of Evolution set of 20
 SZ15 Fishes set of 30
 SZ16 Hydra & Obelia set of 20
 SZ17 Harmful Insects set of 20
 SZ18 Useful Insects set of 20
 SZ19 L.H. Butterfly set of 10
 SZ20 L.H. Honey Bee set of 10
 SZ21 L.H. Housefly set of 10
 SZ22 L.H. Mosquito set of 10
 SZ23 L.H. Silkworm set of 10
 SZ24 Liverfluke & Tapeworm set of 20

SZ25 Mammals set of 30
 SZ26 Meiosis set of 15
 SZ27 Mendel Heredity set of 20
 SZ28 Mitosis set of 10
 SZ29 Prehistoric Animals set of 20
 SZ30 Protozoa set of 10
 SZ31 Reptiles & Amphibians set of 40
 SZ32 Snakes set of 20

Price per slide Rs. 12.00

BOTANY SECTION

SB01	Algae Fungi set of 20
SB02	Angiospermic Families set of 15
SB03	Bacteria set of 20
SB04	Bryophyta & Pteridophyta set of 20
SB05	Cell Structure set of 20
SB06	Dispersal of Seeds set of 20
SB07	Fern set of 10
SB08	Fruits set of 20
SB09	Germination of Seeds set of 20
SB10	Higher Plants set of 20
SB11	Inflorescence set of 10
SB12	Insectivorous & Parasitic Plants set of 20
SB13	L.H. Mucor set of 15

SB14	Leaves set of 20
SB15	Marchantia set of 15
SB16	Meiosis set of 15
SB17	Mitosis set of 10
SB18	Plant Anatomy set of 20
SB19	Plant Histology set of 30
SB20	Plant Kingdom set of 30
SB21	Plant Physiology set of 30
SB22	Pollination set of 10
SB23	Roots set of 20
SB24	Spyrogyra set of 20
SB25	Stems set of 20
SB26	Vegetative Reproduction set of 20
SB27	Water Plants set of 10

Price per slide Rs. 12.00

SPECIAL SLIDES

SSS01	Biology Album for 10+1 set of 100	Rs. 1400.00	SSS05	Pathology set of 100	Rs. 1900.00
SSS02	Biology Album for 10+2 set of 100	Rs. 1400.00	SSS06	Chemistry Album for 10+2 set of 100	Rs. 1400.00
SSS03	Medicinal Plants set of 100	Rs. 1900.00	SSS07	Physics Album for 10+2 set of 100	Rs. 1400.00
SSS04	Histology set of 100	Rs. 1900.00	SSS09	Human Physiology set of 100	Rs. 1900.00

BIO VIEWERS

BV01 Slidoscope for Viewing Slides in available light.....Rs. 450.00

Biostrips are available on various subjects. Biostrips can be prepared on any subject (Minimum quantity should be 50 each title).

INDIAN SCHOOL SYLLABUS ON VIDEO*From Hazel Dolbrien of the U.K.*

Any one CD Rs. 300.00

BIOLOGY

Code	Title	Time (in mins.)		
E01	Sleepy Heads, Amoeba, Protista.	41		
E02	How Insects Develop Part -I & II, Life of the Forest.	49		
E03	What are Cells, Role of the Cell Membrane, Peripheral Nervous System.	57	E09	Meiosis, Mitosis, Circulatory System. 51
E04	The Woods, Woodlands: Plant Movements, What is Autumn, What is Spring.	52	E10	Temperature Regulation, Chemistry of The Cell Part - I & Part II. 52
E05	About Your Body, Tissues of the Human Body, Body Fights Diseases.	43	E11	Effect of Light on Oxygen Production, effect of Chlorophyll & Carbon Dioxide on Oxygen production & Starch Formation, Plants Make Food, Photosynthesis. 56
E06	How Seeds are Scattered, Dispersal of Seeds and Fruits, How Seeds Grow.	52	E12	Circulation of the Heart, Respiratory, Reproductive & Nervous System. 50
E07	Life Cycle of Insects Part -I & Part - II, life story of the Earthworm, food feeding habits.	47	E13	Liver, Digestive System Part-I & Part -II, Lymphatic System. 54
E08	Process of Pollination, Germination & Growth of plants, Life Cycle of Flowering Plants, Animals Breathe in many ways.	54	E14	Tissue Respiration, How Plants Move, Coral Reef Community. 51
			E43	Growing Plants, Fungi & man, Fungi. 47



Any one CD Rs. 300.00

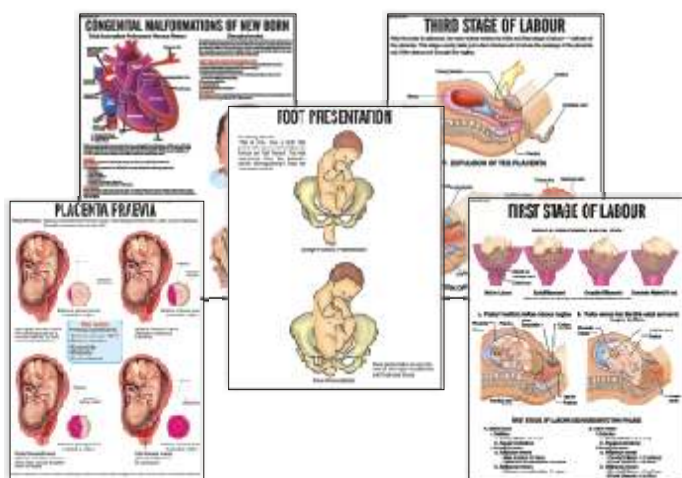
BIOLOGY			PHYSICS			
Code	Title	Time (in mins.)	Code	Title	Time (in mins.)	
E48	Insects, Roots & Plants that help us.	44	E28	Conquest of the atom, X-Ray Diffraction, Principles of Nuclear Fission.	55	
E49	Genetic Investigation, Genetics & Plant Breeding, Pattern Developments.	43	E29	Electricity (Fundamentals), pressure & Current, Electrical sources.	55	
E50	Autumn Brings Changes, Spring Brings Changes, Flying Birds.	44	E30	Introducing the Oscilloscope, Electromagnetic Waves, Isotopes.	53	
E51	Parasites, Microbiology: Microbes & their Control, Diffusion & Osmosis, Structure of Protein.	54		E31	Electromagnetic Waves Part-I & Part -II.	42
E52	Autonomic Nervous System & Drugs.	35		E32	Waves & Vibrations, Young & the Theory of Light, Principles of T.V.	54
E53	Life Cycle of a Frog, Skeleton, Skin as a Sense Organ, Egg & Sperm.	50		E33	Velocity of Gamma Rays, Learning About Heat, Discovery of Radioactivity.	46
E54	Sense Perception Part-I & Part-II	55		E61	Steam & Steam Generation Time Measurement & Meaning.	51
	E55	Introduction to Dissection, Work of Kidneys		42	E62	Energy From the Sun, How it works.
	E103	Human Brain Part-I: The Self	50	E63	Actions & reaction, Rotational Dynamics.	34
	E104	Human Brain Part-II: Language	50	E64	Fuels for the Future, How Machines help us.	47
	E105	Human Brain Part-III: Fear	50	E65	Rockets, Doppler Effect, Wave Particle Quality, Newtons II Law.	53
	E106	Human Brain Part-IV: Memory	50	CHEMISTRY		
	E107	Human Brain Part-V: Seeing	50	E34	Atoms & Molecules (Properties of matter), Chromatography, Combustion.	47
	E108	Human Brain Part-VI: Madness	50	E35	Acids, Bases & Salts, Physics & Chemistry of Water.	41
	PHYSICS			E36	What is Soap?, Sodium Family, Nitric Acid Compounds & Nitrogen Cycle.	48
E22	Light, Measurement of Acceleration of Gravity, Very Low Temperature, Reflection, Refraction & Polarisation of Light.	53	E37	O for Oxygen, Strange case of Liquid Oxygen	44	
E23	Photoelectric Effect, prelude to Power, Refraction, Reflection & Scattering of Light	51	E38	Atomic Model & The Periodic Table.	44	
E24	Dioxide Characteristics, Power, heat as a Radiant Energy.	42	E66	Crystallisation, Distillation.	49	
E25	Buoyancy, Vibrations, learning about Sound.	51	E67	Properties of Matter I & II.	46	
E26	Magnetism part-I, II & III.	49	E68	Properties of Matter III, IV & V.	55	
E27	Friction, Colour from light, magnetism, Magnets & their uses.	40	E69	Basic Laboratory Techniques I.	54	
			E70	Basic Laboratory Techniques II.	60	
			E71	Basic Laboratory Techniques III.	45	
			E72	Preparation of Oxygen: Demonstration, Development of Electrochemistry, ABC of" NPK, Facts about Fertiliser.	52	
			E73	Vanadium: A Transistor Element, metals & Non-metals, Silicon & its Compounds. Diamonds a Metal working	57	
			E94	Rutherford Model of An Atom	42	

Teaching Learning Material for Medical & Nursing Institutions

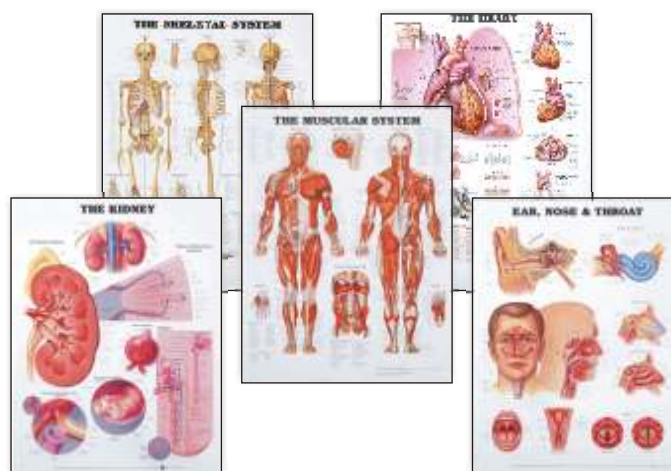
MODELS, MANIKINS & SIMULATORS



IMPORTANT NURSING CHARTS



ANATOMICAL CHARTS



OTHER MEDICAL CHARTS



BONE CHARTS

ORGAN CHARTS

LIGAMENT CHARTS

For your requirements of items for Medical, please ask for our separate catalogue.

For Mathematics Lab please ask for our separate catalogue.



Abacus



Drawing Models



Cubes



Geometry Box



Palm Clock



Portraits of Mathematicians



Number Planet



Jr. Pythagorus Theorem



Kitchen Balance



OCTANT 3-D



Transparencies



Charts

For Social Studies, please ask for our separate catalogue.



Globe



Rollup Black Charts & Graph



Country Maps



Outline Maps



State Maps



Delta Model



Volcano Model



Specimens Rocks & Minerals



Solar System



Great Geographers



Charts



GPS



Galaxy Star Finder



Dumpy Level

84 Years of Dedicated & Honest Services



N.C. KANSIL & SONS

Kansil Bhawan, 8606, Model Basti, New Delhi-110 005

Phones : 91-11-47202020 (30 lines)

Fax : 91-11-23550340

Whatsapp No. : 91-9310512020

email: nckmaps@gmail.com

Website: www.nck-maps.com www.nckmap.com www.nckkansil.com

Ready Stocks – Best Quality – Competitive Rates