



MEDICAL CATALOGUE

2016

MODELS ON

- Torso
- Joints
- Physiology
- CPR Manikin
- Nurse Training
- Delivery Training
- Suturing Training
- Injection Training
- Skeleton Anatomy
- Community Health
- Trauma Simulator
- Anatomy Models

CHARTS ON

- Yogasan
- Nurse Training
- Food & Nutrition
- Health & Hygiene
- Scientist Portraits
- First Aid Anatomy
- Human Physiology
- Health & Diseases
- Genetics & Evolution
- Science & Technology
- And Many More...



Dear Patron,

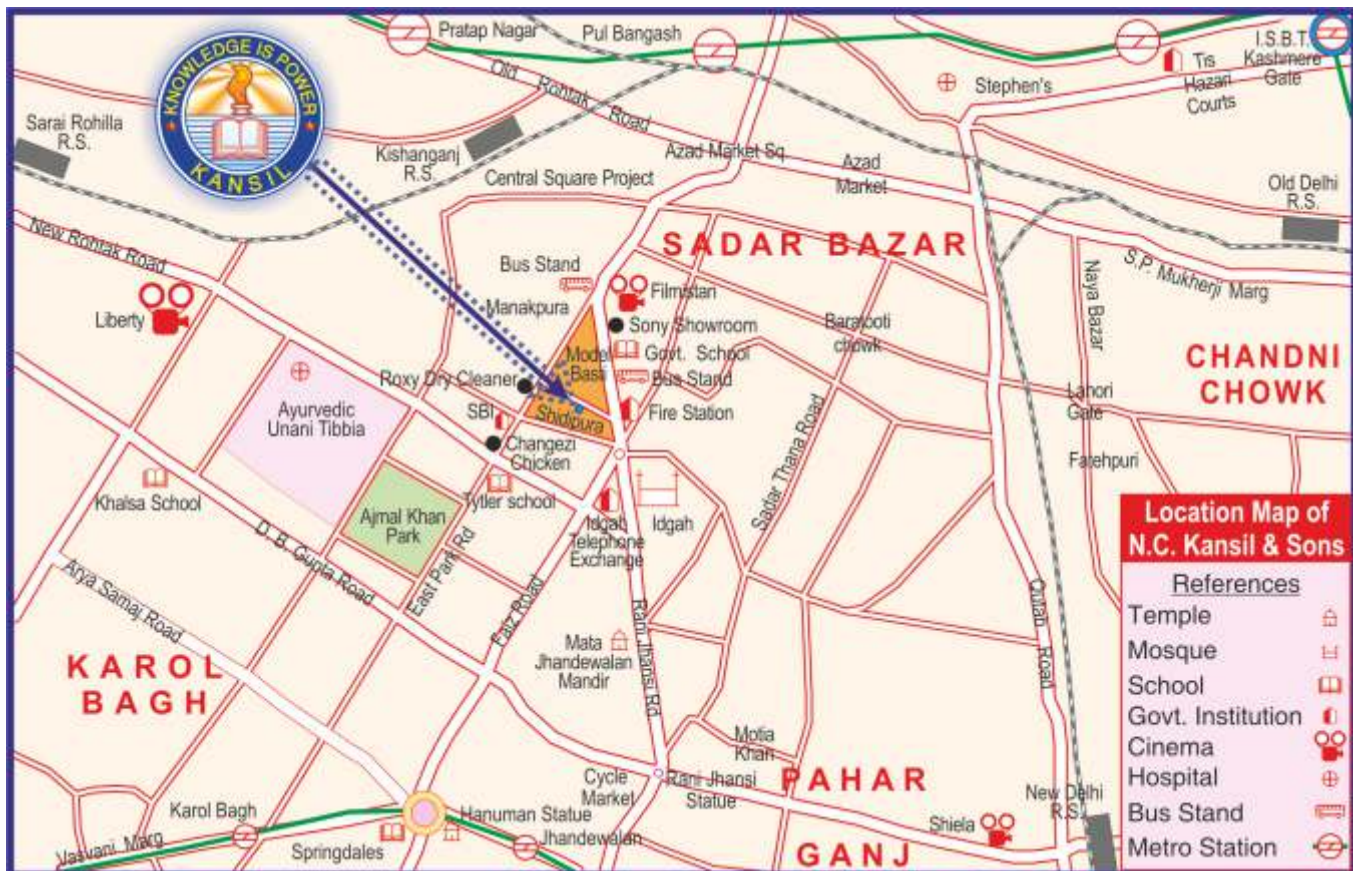
We present our catalogue for 2016 with great pleasure and confidence as our products are far superior and effective than those of others. Again the variety is really very great.

This year we have added models on Community Health and Environmental Sanitation which were either not available or were of a very poor quality.

We have also imported an economical CPR Manikin with additional feature of both adult and child CPR in one manikin and is suited to every budget.

Still we seek your advice and cooperation in further expanding the scope of range. We are sure that all the articles will be very useful for your institution.

Thanking you and assuring you of our best services,



CONTENTS

Important Nursing Charts	1-2
Newly Introduced Digital Charts	3
Anatomical Charts from USA	4-6
Bones & Skeleton Models	7-10
Skeleton, Skeleton With Muscles & Ligaments	7
Vertebral Column, Disarticulated Skeleton, Skull ...	8
Pelvis, Fetal Skull, Bone Structure, Palm & Foot ...	9
Joints Models	10
Human Torso Models	11
Digestive System & Related Models	12
Heart, Circulatory System & Eye	13
Skin & ENT	14
Brain, Nervous System & Related Models	15
Respiratory System & Dental Models	16
Excretory System & Related Models	17
Reproductive System & Related Models	18
Gynae & Obstetric Models	19-22
Ovary, Embryo, Placenta, Fetus, Fertilization	19
Development of Fetus, Delivery Mechanism	20
Vacuum Delivery, Gynae Examin. & Training	21
Episiotomy Training, Vulva Suturing Training	22
Maternity Examination, Labour Delivery	22
Advance Delivery & Emergency Simulator	23
Paediatrics Models	24
Nursing Manikins	24-27
Ad. Multi Functional Child Unisex Manikin	24
Advanced Nursing Baby Manikin	25
Full Functional Elderly Female Manikin	25
Basic Combination Nursing Manikin	26
Ad. Nursing & Wound Care Manikin Male	26
Multi Functional Nursing Manikin	27
CPR Manikins	27-30
AED Trainer, CPR Training Torso	27
Advanced CPR Training Manikin With Monitor	28

Adult CPR Manikin	28
Half Body CPR Manikin	28-29
Advanced Infant CPR Manikin	29
Advanced Neonatal Nursing & CPR Manikin	30
Medical Models	30-34
Advanced Trauma Simulator	30
Surgical Suturing & Bandaging Simulator	30
Central Venous Catheterization Simulator	31
PICC Line Model	31
Ad. Neonatal Vein Intubation Simulator	31
Multi Functional Intravenous Injection Arm Model ..	31
Full Functional Vein Injection Arm	32
I.V. Training Arm, Prostate Inspection	32
Peritoneal Dialysis Simulator	32
Surgical Suture Arm & Leg, Airway Intubation	33
Catheterization, Intramuscular Injection Training ..	33
Breast Examination, Lymphatic System	34
Buttock Inter Muscular Injection Training Model ...	34
Frog Dissection Kit	34
Community Health Nursing Models	35-36
Build Your Anatomy Models	36
Histology & Biomolecules Models	37
Visual Teaching Aids	37-39
Biology Models	40
Anatomy Models	41
Charts	42-52
Detailed Human Physiology Charts	42-43
Yogasan Charts	44
Health, Hygiene & Sanitation	45-46
Charts on AIDS	47
First Aid Charts	48
Genetics & Evolution Charts	49
Charts on Food & Nutrition	50
Science & Technology Charts	51-52
Portraits	53-54
Scientists	53
Pharmacy Teaching Portraits	54
Medical Milestones	54

Some Tips to Study the Catalogue

Welcome! - You are about to enter the wonderfully exciting world of Teaching Aids. In the pages of these catalogues you will come to know the products manufactured and marketed by us. Before you start browsing through them we give below some tips that will help you to study it better and effectively.

1. All the articles are manufactured in very heavy quantity by using very costly designs, dies and patterns. As such the size and description cannot be changed or altered at will. Please prepare your requirements according to the material and size mentioned in the catalogue.
2. All the articles are properly coded. Please mention the code and language.
3. The illustrations of charts are very selective. Each and every chart cannot be displayed in the catalogue. As such while placing an order please consult the detailed list mentioned therein.
4. The panorama of the Teaching Learning material has been very well arranged subjectwise and where ever necessary we have given cross references.
5. Applicability of Value Added Tax or CST and other overhead expences have been mentioned below. Please go through the same.
6. It may be stated that the division of the catalogue is just for the sake of convenience. You may place your requirements with us all in one lot.

PLEASE NOTE

1. Customers' full satisfaction is our business policy. We are fully confident of the high standard and quality of our products.
2. To avoid delay in the execution of your order, please be careful as to mention:
 - a. The size & language of the map, chart, model or globe required by you.
 - b. Your nearest Railway Station and the name of your bankers.
3. The prices mentioned are nett, Ex-godown. Packing, Forwarding and Transportation charges extra. Maps, Charts and Globes are exempted from Value Added Tax/Central Sales Tax . On other articles VAT/CST @ 12.5% is extra.
4. Please mention very clearly your exact requirements mentioning either the cost or our catalogue page No. and serial No. This will help us in processing your indents at a faster speed.
5. Images shown in the catalogue are for reference only. It may differ in colour or shade from actual product.
6. All disputes subject to Delhi Courts Jurisdiction only.

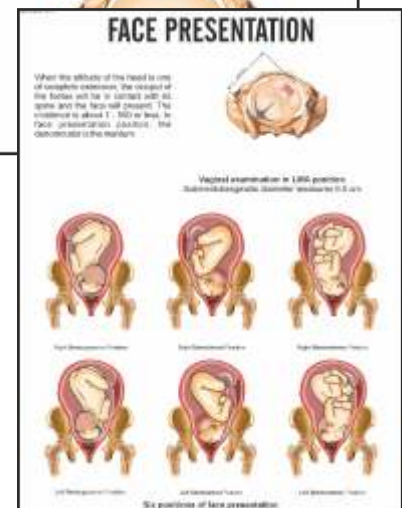
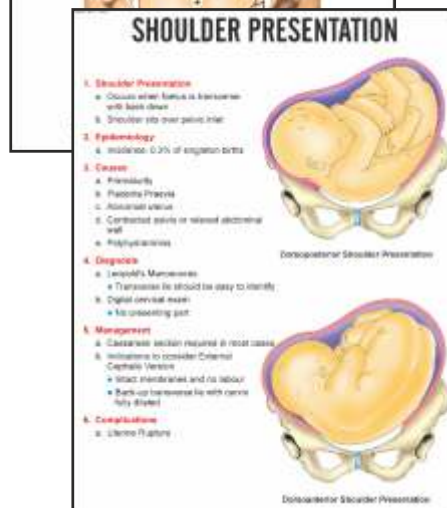
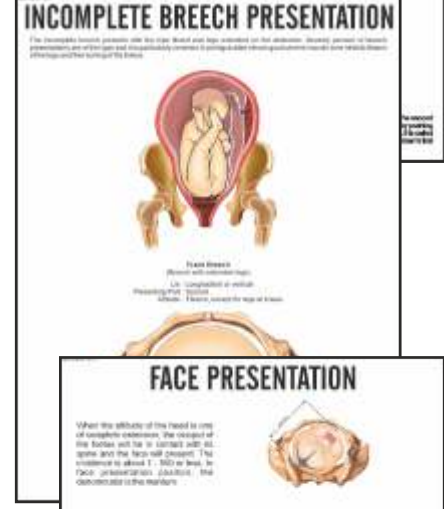
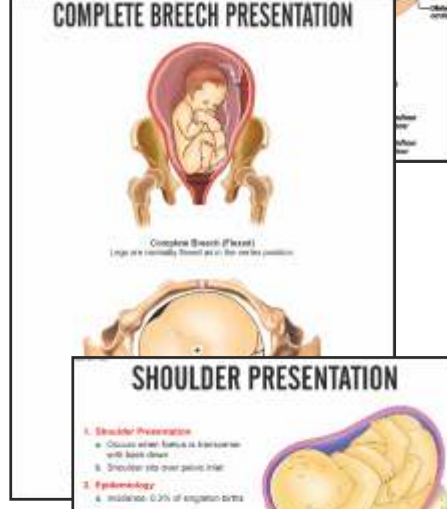
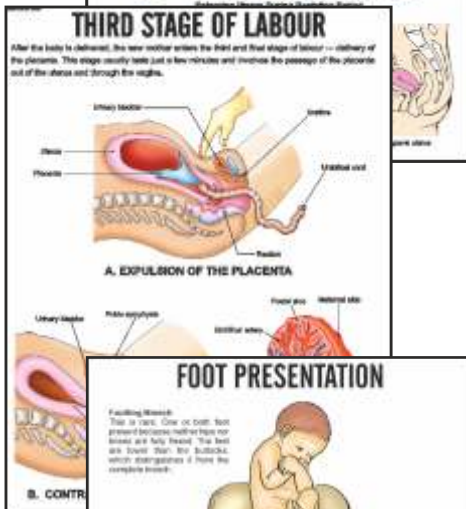
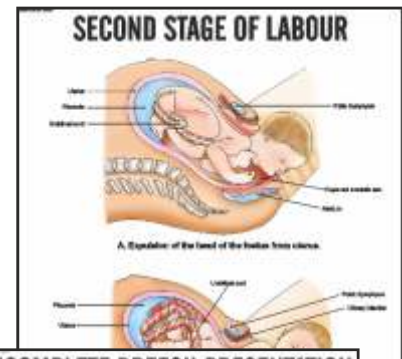
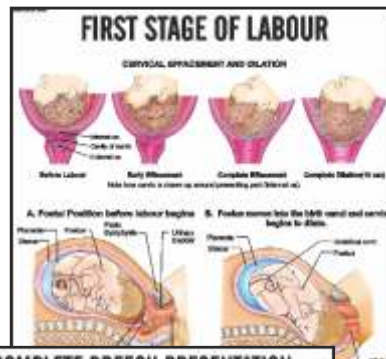
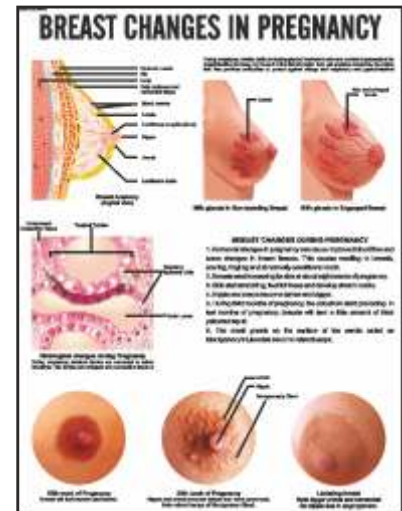
IMPORTANT NURSING CHARTS

Size 51 × 66 cm

CODE NO.	NAME OF THE CHART
INC01	Breast Changes in Pregnancy
INC02	Uterine Changes in Pregnancy
INC03	First Stage of labour
INC04	Second Stage of labour
INC05	Third Stage of labour
INC06	Complete Breech Presentation
INC07	Incomplete Breech Presentation
INC08	Foot Presentation
INC09	Shoulder Presentation
INC10	Face Presentation

Rigid lamination on board with aluminium frame

Each Rs. 800.00



Important Nursing Charts

CODE NO. NAME OF THE CHART

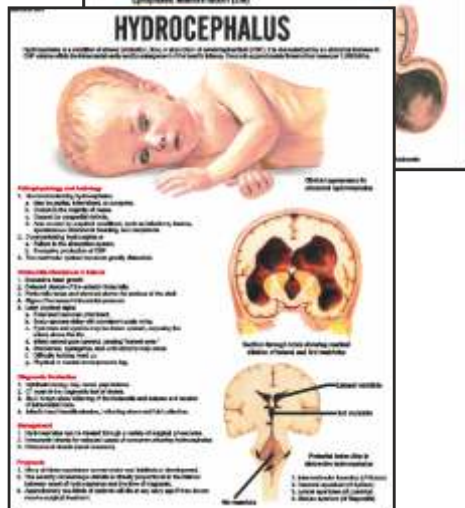
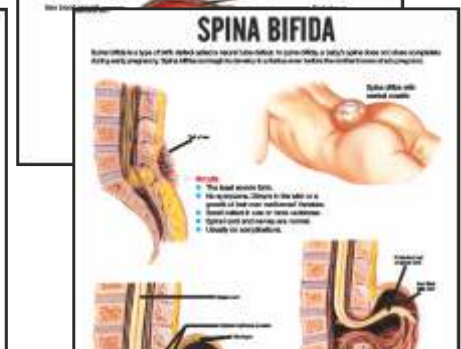
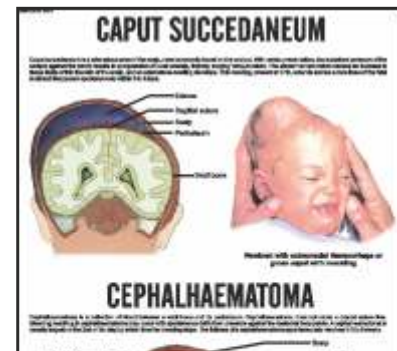
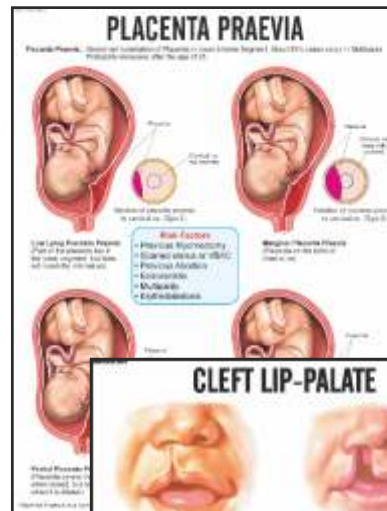
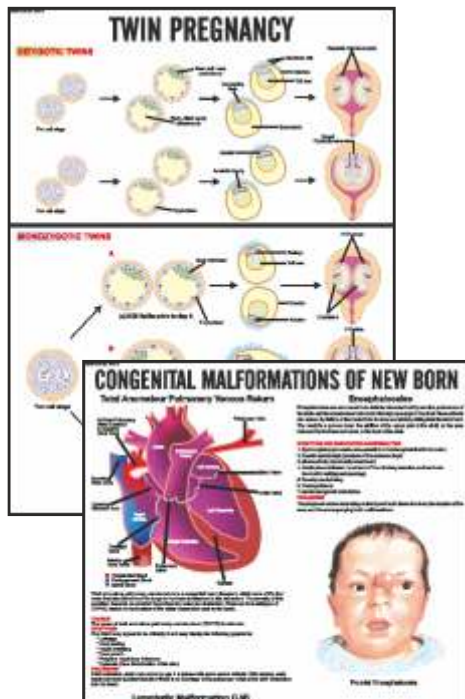
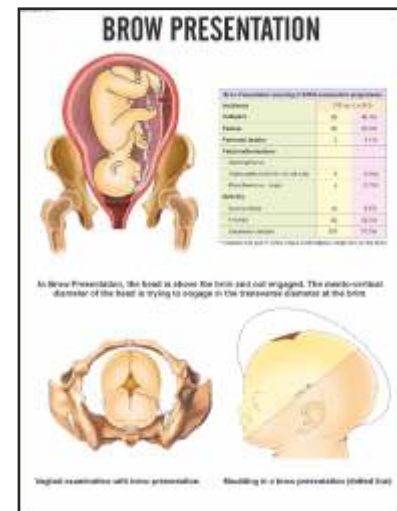
INC11	Brow Presentation
INC12	Twin Pregnancy
INC13	Placenta Praevia
INC14	Caput Succedaneum, Cephalhaematoma
INC15	Congenital Malformation of New Born
INC16	Cleft lip-Palate
INC17	Spina Bifida
INC18	Hydrocephalus
INC19	Anencephalus
INC20	Breast Self Examination

Rigid lamination on board with aluminium frame

Each Rs.800.00

All the above charts in flexible lamination fitted with rollers
set of 20

per set Rs. 10,000.00



NEWLY INTRODUCED CHARTS

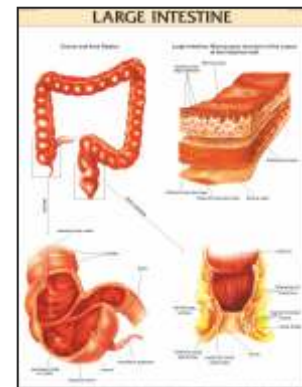
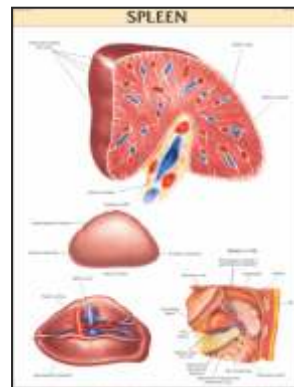
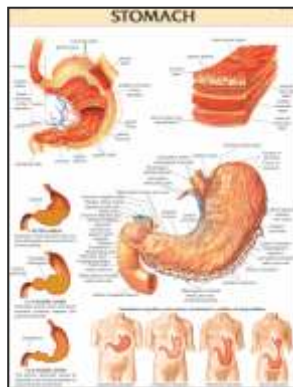
Size : 51 x 66 cm

Rigid lamination on board with aluminium frame.
Flexible lamination fitted with rollers.

each Rs. 800.00
each Rs. 500.00

- DMN001 Human Skeleton
- DMN002 Different Types of Joints
- DMN003 Different Types of Vertebra, Atlas
- DMN004 Different Types of Vertebra, Axis
- DMN005 Different Types of Vertebra, Cervical
- DMN006 Different Types of Vertebra, Thoracic
- DMN007 Different Types of Vertebra, Lumbar
- DMN008 Different Types of Arm Bones
- DMN009 Different Types of Bones, Scapula
- DMN010 The Pelvic Girdle
- DMN011 Different Types of Leg Bones
- DMN012 Human Hand & Foot Bones
- DMN013 Ligaments of Spinal Column
- DMN014 Ligaments of Upper Limb
- DMN015 Ligaments of Lower Limb
- DMN016 Pelvic Ligaments
- DMN100 Dentition - Teeth Types
- DMN101 Mammalian Skin V. S.
- DMN102 Trachea
- DMN103 Larynx
- DMN104 Oral Cavity
- DMN105 Stomach
- DMN106 Pancreas
- DMN107 Spleen
- DMN108 Small Intestine

- DMN109 Large Intestine
- DMN200 Blood Circulatory System
- DMN201 Reproductive System
- DMN400 CPR Infant
- DMN401 CPR Child
- DMN402 CPR Adult
- DMN700 Stages of Human Development
- DMN701 Cross Sectional Anatomy : Thoracic Vicera
- DMN702 Cross Sectional Anatomy : Abdominal Vicera
- DMN703 Cross Sectional Anatomy : Pelvic Vicera



ANATOMICAL CHARTS

Printed by Anatomical Chart Co. USA

Rigid Lamination on board with Aluminium frame Rs. 1550.00 each

Flexible laminated with rollers Rs. 1100.00 each

- Just the right level of detail for medical professionals, patients, students, and other specialists.
- At-a-glance format that speeds learning.
- Clearly labeled anatomical features that eliminate confusion.
- Striking colourful images that capture and hold attention.
- Enlarged views of key organs and structures.
- And each chart is comprehensive, allowing for complete learning that's always enjoyable and accessible- never overwhelming.

MUSCULAR SYSTEM

- AC8946 The Muscular System
AC8947 The Female Muscular System

SKELETON SYSTEM

- AC2425 Understanding Low Back Pain
AC9850 The Vertebral Column
AC9881 Understanding Osteoporosis
AC9970 Human Spine Disorders
AC9990 Head & Neck
AC9989 Whiplash Injuries of the Head & Neck
AC9991 The Human Skull
AC9793 Ligaments of the Joints
AC9803 Understanding Arthritis
AC9790 Hand and Wrist
AC8943 The Skeletal System
AC9791 Understanding Carpal Tunnel syndrome
AC9138 Anatomy & Injuries of the Hand & Wrist
AC9799 Shoulder and Elbow
AC9800 Anatomy and Injuries of the Shoulder
AC9780 Hip and Knee
AC9802 Anatomy and Injuries of the Hip
AC6669 Anatomy and Injuries of the Spine

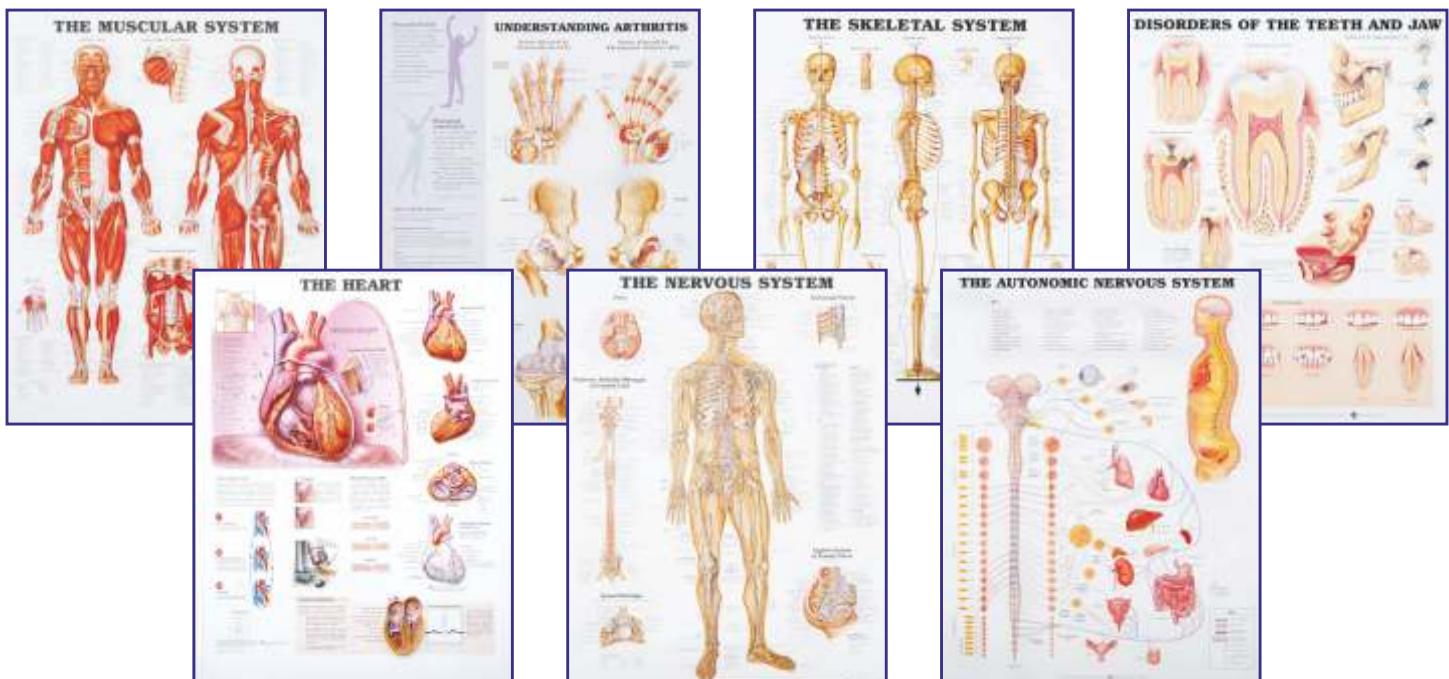
- AC9872 Knee Injuries
AC9781 Hip and Knee Inflammations
AC9795 Foot & Ankle
AC8379 Anatomy & Injuries of the Foot & Ankle
AC9839 Understanding Pain
AC9932 Temporomandibular Joint (TMJ)
AC9931 Anatomy of the Teeth
AC9866 Disorders of Teeth & Jaw

WEIGHT AND DIET

- AC3201 Understanding Your Weight
AC9779 Maintaining a Healthy Weight
AC9776 Risks of Obesity
AC2226 BMI & Waist Circumference
AC9894 Keys to Healthy Eating
AC9778 Metabolic Syndrome

HEART AND CIRCULATORY SYSTEM

- AC9103 High Cholesterol
AC9767 Hypertension
AC9882 Understanding Cholesterol
AC9798 Understanding Hypertension
AC8953 Deep Vein Thrombosis
AC8952 The Vascular System and Viscera



Printed by Anatomical Chart Co. USA
Rigid Lamination on board with Aluminium frame Rs. 1550.00 each
Flexible laminated with rollers Rs. 1100.00 each

AC9878 Anatomy of the Heart
 AC8023 The Heart
 AC9912 Heart Disease
 AC8824 Heart Conditions
 AC9915 Cardiovascular Disease

NERVOUS SYSTEM

AC8949 The Nervous System
 AC8024 The Spinal Nerves
 AC8026 Autonomic Nervous System
 AC8022 Dermatomes
 AC9974 Understanding Depressions
 AC9979 Migraines and Headaches
 AC9921 Anatomy of the Brain
 AC9920 The Brain
 AC9868 Understanding Stroke
 AC9976 Understanding Alzheimer's
 AC9978 Understanding Parkinson's Disease
 AC9716 Understanding Multiple Sclerosis
 AC9197 Understanding Sleep Disorders
 AC9867 Understanding Epilepsy

DIABETES

AC9753 Understanding Type 2 Diabetes
 AC9754 Understanding Type 1 Diabetes
 AC9755 Understanding Diabetes

THE ENDOCRINE SYSTEM

AC831X Thyroid Disorders
 AC9720 The Endocrine System
 AC828X Internal Organs of the Human Body

THE DIGESTIVE SYSTEM

AC9731 Understanding Ulcers
 AC9965 Gastroesophageal Disorders and Digestive Anatomy
 AC3331 Understanding Colorectal Cancer
 AC2146 Understanding Irritable Bowel Syndrome
 AC9859 The Digestive System
 AC9861 Diseases of the Digestive System
 AC9960 The Liver
 AC0924 Understanding Liver Cancer
 AC9992 Understanding Hepatitis
 AC9696 Dangers of Alcohol
 AC2160 Understanding Pancreatic Cancer

URINARY SYSTEM

AC9951 The Kidney
 AC9796 The Urinary Tract
 AC6508 Understanding Kidney Cancer
 AC9797 Diseases of the Urinary Tract
 AC2241 Understanding Prostate Cancer

LYMPHATIC SYSTEM

AC8937 The Lymphatic System

RESPIRATORY SYSTEM

AC3232 Understanding Lung Cancer
 AC9766 The Respiratory System
 AC9783 Chronic Obstructive Pulmonary Disease (COPD)
 AC9768 The Respiratory System and Asthma
 AC9862 Understanding Asthma



Imported Anatomical Charts

Printed by Anatomical Chart Co. USA

Rigid Lamination on board with Aluminium frame Rs. 1550.00 each

Flexible laminated with rollers Rs. 1100.00 each

- AC9865 Dangers of Smoking
- AC9864 Understanding Allergies
- AC9875 Understanding the Common Cold
- AC8859 Understanding Influenza
- AC9073 Diseases of the Lung
- AC9774 Understanding Bacterial Infections
- AC9775 Understanding Viral Infections

SKIN

- AC9940 The Skin & Common Disorders
- AC9998 Understanding Skin Cancer
- AC9942 The Human Hair

IMMUNE SYSTEM

- AC9730 The Immune System : Allergic Response
- AC9772 The Development of Blood Cells
- AC9761 Understanding Leukemia
- AC9756 Understanding Cancer

EAR, NOSE AND THROAT

- AC9891 Anatomy of the Inner Ear
- AC9893 Middle Ear Conditions
- AC9890 The Ear - Organs of Hearing and Balance
- AC9895 Ear, Nose & Throat
- AC9879 Pharynx & Larynx

HIV & AIDS

- AC9765 Sexually Transmitted Infections
- AC9760 Understanding HIV & AIDS

EYE

- AC9694 The Eye: Anterior and Posterior Chambers
- AC9695 Disorders of the Eye
- AC9286 Understanding Glaucoma
- AC9691 The Eye

GYNAECOLOGY AND REPRODUCTIVE SYSTEM

- AC2333 Understanding Ovarian Cancer
- AC6547 Understanding Cervical Cancer
- AC9758 Understanding Breast Cancer
- AC9759 Benign Breast Disease
- AC9977 Understanding Menopause
- AC9652 The Female Reproductive System
- AC9981 Pregnancy & Birth
- AC3508 Common Gynecological Disorders
- AC9740 Infertility
- AC9863 The Prostate
- AC9672 The Male Reproductive System
- AC9673 Understanding Erectile Dysfunction
- AC2166 Female Breast Anatomy
- AC2265 Prenatal Development



BONES & SKELETON MODELS

XC-101



XC-101

XC-101 Human Skeleton

- Size: 170 cm life size.
- Made of PVC plastic.
- Removable arms and legs.
- Features nerve branches, vertebral artery and herniated lumbar disc.
- Skull includes movable jaw, cut calvarium, suture lines and three removable lower teeth.
- Mounted on a sturdy 40cm wide base.
- Washable & Unbreakable
- Ideal for teaching the basics of human anatomy.

• Price Rs. 14400.00

XC-101A Human Skeleton With Muscles & Ligaments

- Life size 170 cm
- With muscles & ligaments
- On pelvic mounted stand with 40cm wide base.
- The skeleton allows you to demonstrate the hand painted muscles origins & flexible joints ligaments.
- This skeleton is made of durable plastic.
- Skull includes movable jaw, cut calvarium, suture lines and three removable lower teeth.
- Washable & Unbreakable
- Ideal for teaching the basics of human anatomy.

• Price Rs. 25800.00

XC-101A



SK-160



SK-160 Skeleton with Stand

- Real life model
- Size 170 cm
- Durable parts
- Stand with wheel
- Can be employed as a visual aid in the instruction of anatomy to students of medicine.

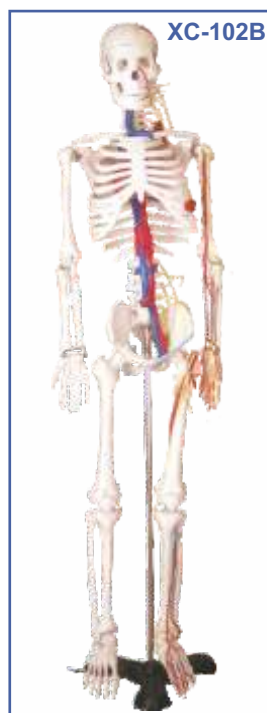
• Price Rs. 25000.00

XC-102B Human Skeleton

- Size 85cm Medium.
- Made of PVC plastic.
- Shows nerves and blood vessels.
- Depicts the position, course and distribution of main arteries and peripheral nerves
- Can be employed as a visual aid in the instruction of anatomy to students of medicine.

• Price Rs. 4750.00

XC-102B



SK046



SK046

Sk046 Mini Skeleton

- Real life Model
- Detachable joints
- Durable Parts
- ABS Stand
- Size: 46 cm(18")

• Price Rs. 1350.00

XC-126 Vertebral with Pelvis & Femur Heads

- Life size model
- Shows all significant features of each vertebra, including spinal cord, nerve roots, the vertebral artery, a herniated disc and vertebral notch etc.
- Ideal teaching model for students, orthopedic surgeons and other medical professionals.
- Special features: inflexible 72cm tall vertebral column complete with pelvis, femur heads, sacrum, occipital bone, vertebral artery, all nerve branches and herniated lumbar disc.
- Deluxe chrome stands 85 cm high.

• Price Rs. 5350.00

XC-126



XC-105C Didactic Flexible Vertebral Column with Pelvis

- This model has a fully flexible spine throughout and features different sections of the spinal column in different color: cervical vertebrae, thoracic vertebrae, lumbar vertebrae, sacrum and the coccyx.

• Price Rs. 5800.00

XC-105C



XC-130B

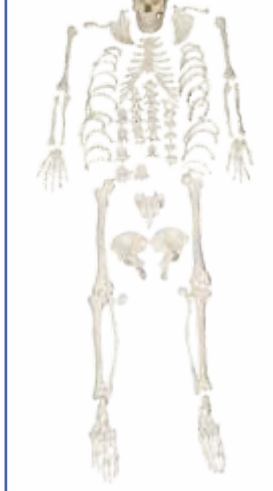


XC-130B Disarticulated Painted Skeleton Model

- Life size model disarticulated adult skeleton includes 3-part skull, right hand and right foot on wire.

• Price Rs. 16400.00

XC-130



XC-130 Disarticulated Skeleton

- This economical life size disarticulated skeleton will encourage students to learn the various bones of an Adult Human.
- It is a visual aid for instructions of anatomy to students, doctors, nurses or anyone interested in human skeleton.
- About 200 different bones.

• Price Rs. 10000.00

XC-104



XC-104 Life Size Skull

- This economical life-size adult plastic skull features a moveable jaw, cut calvarium, suture lines and 3 removable lower teeth: incisor, cuspid and molar.
- Dissectible into 3 parts.

• Price Rs. 1950.00

XC-104C

Life Size Coloured Skull

- This is advanced model of XC-104C life-size skull, bones painted in different colors for precise study.
- Can be disassembled into 3 parts.

• Price Rs. 2700.00

XC-104C



NEW

ZX-1202



ZX-1202 Human Skull Model Dx.

- Made of high grade synthetic polymer having long durability.
- Size: Natural size.
- Dissectible into 3 parts with moveable jaw, cut calvarium.
- Well illustrated and informative.
- Model is accurately made from actual specimen references, photographs and encyclopedia reference under expert guidance.
- Model is a great teaching tool for anatomy lessons.

• Price Rs. 3400.00

NEW

XC-104E



XC-104E Skull Model with 8 Parts Brain

- This Model is based on XC-140D, includes 8 parts brain : frontal and parietal lobe, temporal and occipital lobe, encephalic trunk and cerebellum.

• Price Rs. 4300.00



XC-123

XC-123 Adult Male Pelvis

These model sizes are just the same as realities and made of PVC plastic. Comparing a model of male pelvis with a female one, the differences between the two can be listed as following:

	Male	Female
• Pelvis shapes	Long and narrow	Short and broad
• Pelvis cava	Like a funnel	Like a barrel
• Aperture pelvis Superior	Heart-like	Rounded
• Sacrum	Long and narrow	Broad and short
• Angles of pelvis arch	70-75 degree	90-100 degree
• Symphysis pubica	Long and narrow	Short and broad
	Price Rs. 1820.00	Price Rs. 1820.00



XC-124

XC-124 Adult Female Pelvis



NEW

ZX-1201

ZX-1201 Human Fetal Skull

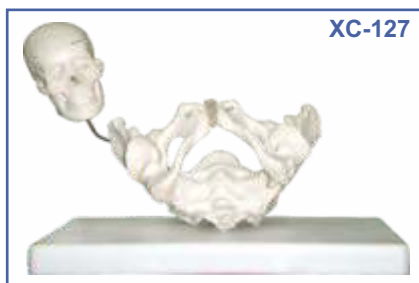
- Made of HSP resin having long durability.
- Natural size. Movable lower jaw.
- Total 41 parts labeled.
- Beautifully painted in colours.
- Showing incomplete ossification of skull bones, fontanelles, frontal and parietal eminences, various skull bones like occipital, temporal, sphenoid, frontal, mandible and maxilla.
- Price Rs. 1500.00



XC-125

XC-125 Female Pelvic Muscles and Organs

- Natural size
- Made of PVC plastic
- Price Rs. 2650.00



XC-127

XC-127 Birth Demonstration Model

- Female Pelvis with miniature skull
- Natural size
- Made of PVC plastic
- Price Rs. 2650.00



GD/A11115

GD/A11115 Infant Skull

- Material: Advanced PVC.
- Price Rs. 4450.00



ZX-1601

NEW

ZX-1601 Bone Microstructure

- Made of HSP resin having long durability.
- Size : 30x20x16 cm.
- Total 19 positions are shown.
- 3-D section of a lamellar bone.
- Model shown various planes in cross and longitudinal section.
- The model helps to understand the typical elements of a lamellar bone along with the Volkmann and Haversian system, spongy and compact parts, endosteum, cortical substance and osteocytes.
- Rs. 4500.00



XC-325

NEW

XC-325

Palm Anatomy

- These life size models show the superficial and internal structures of the palm. Set of 4 Models
- Price Rs. 3950.00

NEW



XC-326

XC-326

Normal, Flat and Arched Foot

- This model shows the anatomical structure and the distal end of tibia of normal, flat and arched foot. Set of 3 models.
- Price Rs. 5100.00

XC-109



XC-109 Shoulder Joint

- Size: 16 × 12.5 × 20cm. Life size.
- Ball and socket joint.
- To illustrate abduction, adduction, anteversion, retroversion & internal/external rotation.
- Includes flexible artificial ligaments.
- Price Rs. 1300.00

XC-110 Hip Joint

- Life size, on stand.
- Ball and socket joint
- Demonstrates anteversion, retroversion, abduction & internal/external rotation. Includes flexible, artificial ligaments.
- Price Rs. 1300.00

XC-110



XC-111

Knee Joint

- Size: 12.5 × 12.5 × 32cm.
- Hinge joint.
- Life size, on stand.
- Demonstrates flexion, extension, and internal/external rotation. Includes flexible, artificial ligaments.
- Price Rs. 1300.00

XC-111



XC-112

XC-112

Elbow Joint

- Size: 12.5 × 12.5 × 32cm.
- Hinge joint.
- Life size, on stand
- Demonstrates flexion, extension, and internal/external rotation of the radius.
- Includes flexible, artificial ligaments.
- Price Rs. 1300.00



XC-113



**XC-113
Foot Joint**

- The model is made of PVC.
- Hinge joint.
- Gliding joint.
- Natural Size.
- Price Rs. 1300.00

XC-113A

**Life-Size Foot
Joint with Ligaments**

- Demonstrate all of foot functionality and the external anatomical structures. Including flexible, artificial ligaments.
- Made of PVC plastic.
- Natural size.
- Price Rs. 1500.00

XC-113A



XC-114

Hand Joint

- The model is made of PVC plastic.
- Hinge joint.
- Saddle joint.
- Condylod joint
- Natural size.
- Price Rs. 1300.00

XC-114



XC-114A

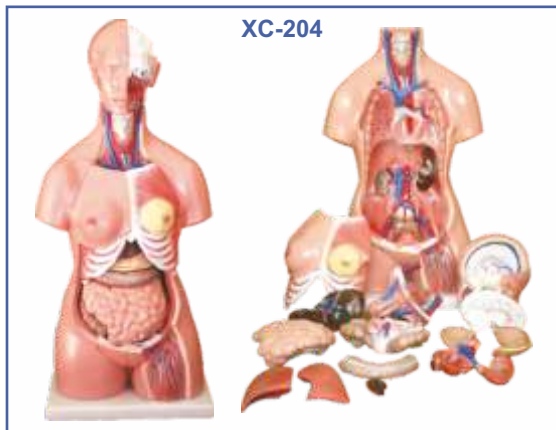


XC-114A

**Life-Size Hand
Joint with Ligaments**

- Demonstrate all of hand functionality and the external anatomical structures.
- Including flexible, artificial ligaments.
- Made of PVC plastic.
- Natural size.
- Price Rs. 1500.00

HUMAN TORSO MODEL



XC-204 Unisex Torso 23 parts 85CM

- Size: 33.5" tall (85cm), Made of PVC plastic.
- Features an exposed spine with removable vertebra and spinal cord segments.
- Interchangeable male and female genitalia.
- The female organs include a fetus in the womb.
- Dissectible into 23 parts: torso, female breast plate, head, eyeball, brain, vertebra spinal nerves, lung (2 parts), heart (2 parts), liver, kidney, stomach (2 parts), intestines (4 parts), male genitalia (2 parts), female genitalia with fetus (3 parts).
- Mounted on a plastic base.

• Price Rs. 13900.00



GD/A 1130/1 Male Muscle Figure 78 cms

- This model consists of 27 parts, such as muscles of chest wall and abdomen, muscles of upper and lower limbs, skull, brain and viscus.
- It shows the structure of head, neck, torso, upper and lower limbs, muscles, muscular tendon, ligaments, viscus, blood vessels, brain etc.
- Material: Advance PVC and painted with imported paint.

• Price Rs. 34200.00



MK050 Human Torso

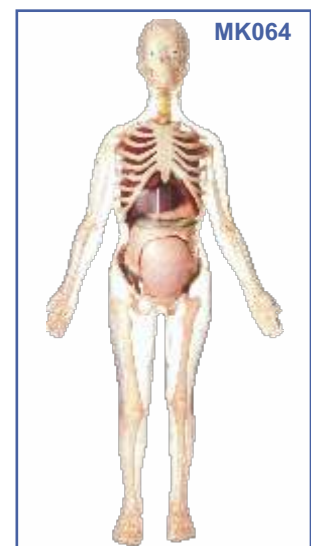
- Hand Painted in Vivid & Natural Colours
- 50cm High, 11 Dissectible Parts
- ABS Base
- Fully Illustrated Colour Instruction Manual.

• Price Rs. 7100.00

MK064 Visible Expectant Mother Anatomy Kit

- Size 55 cm
- Dissectable in 48 pieces
- Detailed instruction manual included.
- This visible anatomy model realistically shows the important parts of human body. Learn how body works by taking the model apart and see how the different organs work together to keep us alive and healthy.
- Everything in a body is there for a reason. From skin to heart to fingerprints. Some of the body parts are organs, like stomach, brain or heart. They do specific things to keep human alive.
- To explore the model, open it by removing the front outer plastic "skin". Next remove the front of the rib cage. Now you can remove the organs one at a time. Notice how the organs connect to each other and fit in the body. After you have taken all the organs out, follow the illustrations to put your model back together.

• Price Rs. 7200.00



DIGESTIVE SYSTEM



ZX-1301A



ZX-1301A

Human Digestive System

- Made of HSP resin having long durability.
- Relief model of human digestive system in median section dissectible into 3 parts.
- Duodenum, caecum and rectum are opened. Rectum is unfolded.
- Transverse colon and front half of the stomach are removable.
- The model features the oral cavity, pharynx, esophagus, stomach, liver with gall bladder, pancreas, GI tract and spleen.
- Shown 56 positions.
- Size : 40x80 cm. Life size.
- Mounted on sturdy wooden frame for easy display.
- Beautiful painted in bright colors.

• Price Rs. 4500.00

GD/A12001



GD/A 12001

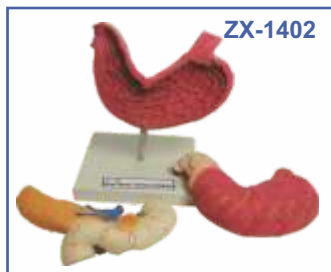
Digestive System

- Mounted on board.
- Shows alimentary canal from mouth to rectum in median section and included buccal cavity, pharynx, esophagus with half of the stomach, the opened duodenum, small and large intestine, the opened appendix, the unfolded rectum, the transverse colon, liver and pancreas.
- Shows 49 positions.
- Made of advanced PVC.

• Rs. 13100.00

ZX-1402 Human Stomach, Pancreas & Duodenum

- Made of HSP resin having long durability.
- Total 70 parts are labeled. Size : 20x15x10 cm
- The model shown different layers of stomach wall.



ZX-1402

- Separated into 3 parts.
- Mounted on stand with base for easy display.
- Model depicts lower esophagus, associated blood vessels and sectioned duodenum and pancreas (revealing large ducts up to its aperture).

• Price Rs. 2100.00

XC-306 Stomach Model

- Made of hard plastic, Magnified 2 times the natural size
- Shows the morphology of the stomach in a distended state.
- With the longitudinal section, the model shows the structures of the gastric folds, pyloric valve, pyloric sphincter muscles, gastric mucosa and the transitional mucosa of the gastric-esophagus.

• Price Rs. 1700.00



XC-306



XC-311

XC-311 Liver, Pancreas and Duodenum Model

- To study the basic structure of the liver, spleen, blood vessels and pancreas.
- External structure are illustrated as well as the pancreatic duct of the pancreas.
- This model also shows the abdominal aorta and inferior vena cava.
- Life-size. Dissectible into 3 parts.
- Made of PVC. Size: 23x12.5x26cm.

• Price Rs. 2000.00



XC-312

XC-312 Liver Model

- An economical way to study the basic structure of the liver.
- The complex vessels network in the opened liver, displayed in different colors on this model : hilus vessels, extra-hepatic and intra-hepatic bile ducts. Liver mounted on stand.

• Price Rs. 3100.00



GD/A12006

GD/A12006 Appendix and Caecum

- Made of advanced PVC.
- Mounted on a stand, Natural size.
- Shows wall of the caecum & appendix.
- Separated into 2 parts
- Shows 17 positions

• Rs. 3300.00

HEART & CIRCULATORY SYSTEM



ZX-1302



ZX-1302 Human Circulatory System

- Made of advanced HSP resin having long durability.
- Half life sized relief model.
- Mounted on wooden base for easy display.
- Beautifully painted in bright colours.
- Anatomically accurate teaching aid of the human circulatory system.
- Model shows following anatomical structures : Arterial and venous system, Heart showing chambers, Lung, Liver, Spleen, Kidneys, Partial skeleton
- 81 parts labeled in total.

• Price Rs. 4500.00

GD/A16001

Circulatory System

- Mounted on board.
- Shows general network of vessels in human body.
- Shows 81 positions.
- Made of Advanced PVC.
- Rs. 11600.00

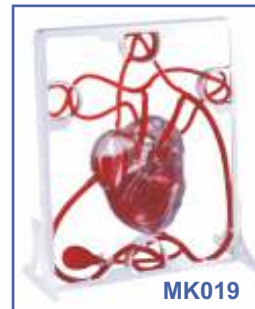
GD/A16001



MK019 Pumping Heart

- A 3-D working plastic heart model with clear chambers. Squeeze bulb pumps simulated blood through clear heart chambers just like real one.
- Complete heart model scale with display stand.
- Complete instruction manual, easy to assemble.
- Acrylic Paints and Brush are included.

• Price Rs. 1500.00



MK019

PD002



PD-002 Heart Model

- Full Size
- Durable ABS Base
- Detachable Cover Piece
- Highly Realistic Decoration
- Price Rs. 1850.00

XC-307

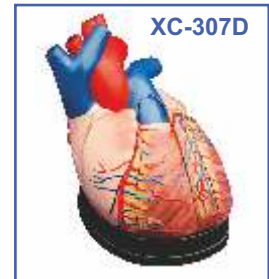


XC-307 Jumbo Heart Model

- Size: 25 × 23 × 23 cm. Made of PVC plastic.
- Helps to understand the external features and internal structures of the heart, and its relation with the large blood vessels.
- Clear conception of routes of the systemic & pulmonary circulation.
- Dissectible into 3 parts
- 4 times enlarged.

• Price Rs. 2450.00

XC-307D



XC-307D Middle Heart Model

- This model shows external features and internal structures of heart and its relation between large blood vessels.
- Dissectible into 5 parts.
- 3 times enlarged.

• Price Rs. 2550.00

EYE

XC-316

Giant Eye Model



- Size: 15.5cm. Made of PVC. Mounted on a plastic stand.
- 6 times enlarged Model. The different parts of the eyeball model are detachable.
- Tunica external: showing cornea and sclera with attachments of ocular muscles and optic nerve.
- Tunica media: showing the iris, the ciliary body and the chorioid.
- Tunica internal is retina.
- Refraction media: showing the lens and the vitreous body.

• Price Rs. 2000.00

XC-316B Eye with Orbit

XC-316B



- The model shows the eyeball with optic nerves and muscles in its natural position in the bony orbit.
- Dissectible into 10 parts.
- 3 times enlarged.
- Price Rs. 4350.00

SKIN

XC-313



XC-313 Skin Model Enlarged

- A greatly enlarged (105 times) cross sectional view of the human skin showing three layers-epidermis, dermis, hypodermis, structures of the human scalp and a close-up view of a hair follicle, sweat gland, fatty tissue, sebaceous gland, blood vessels and nerves. Front, side and back view.
- Mounted on a plastic base.
- Size: 27 × 10 × 31cm

• Price Rs. 2000.00

XC-313-2

Skin Block Model

- This model shows a section of human skin in three dimensional forms. Hair, sebaceous and sweat glands, receptors, nerves and vessels are shown in detail. 70 time enlarged.

• Price Rs. 3200.00

XC-313-2



ZX-1604 Skin Model

- Model shows 3-D section of human skin.

- Size : 21x10x25 cm.

- The model represents differentiated skin layers, hair, sweat glands, sebaceous glands, blood vessels, nerves & receptors for detailed examination.

- Model is mounted on sturdy wooden board for easy display.

- 35 parts labeled in total.

- Made of advanced HSP resin having long durability.

• Price Rs. 1650.00

ZX-1401 Human Skin

- The skin relief model of a skin section of the head.

- Made of HSP resin with long lasting durability.

- Size : 30x35 cm

- Delivered on sturdy wooden base.

Skin section portrays the anatomy of the skin at 70 times life size and shows:- Representation of hair

- Total 31 parts are labeled.

ZX-1401



• Price Rs. 1100.00

E.N.T.

XC-303C Ear Model New Style Giant size

- Dissectible in 6 parts.
- Made of PVC Plastic.
- Size 33x15x23 cm.

• Price Rs. 2100.00

XC-303C



XC-309

Model of the Anatomical Nasal Cavity

XC-309



This model helps the students to understand:

- External nose : shows the section of the nasal bones and cartilages.

Nasal cavity : on the lateral nasal wall show the superior, middle and inferior nasal conchae project medially into the nasal cavity forming the superior, middle and inferior nasal maxillary sinuses.

- Paranasal sinuses : shows the frontal, sphenoid and maxillary sinuses.

• Price Rs. 1250.00

XC-301 Human Larynx Model Magnified

- Size 11.5 × 11 × 24 cm, 3-parts dissectible.

- A functional model, On base 3 times enlarged.

- Shows movements of epiglottis & cartilages in the voice box.

- Shows the morphology and structure of the respiratory tract and phonetic organ.

• Price Rs. 1200.00

XC-301



XC-324

Model of the Head

- This model shows the interior parts of the mouth cavity and pharynx with network of vessels & trigeminal nerves.

• Price Rs. 3950.00

XC-324



BRAIN & NERVOUS SYSTEM

XC-308 Brain with Arteries

XC-308



- Made of PVC plastic.
- Dissectible into 8 parts. On base.
- Natural size: 18.5 × 14 × 13.5cm.
- Facilitates a correct understanding of the features of the brain and its arterial supply as a whole, Relations between their component portions.
- External features of the brain: cerebral hemisphere, brain stem, cerebellum.

- The arterial supply of the brain: sources, vertebral, internal carotid arteries, arterial supply of the cerebellum and cerebrum.

• Price Rs. 1750.00

XC-318 Brain With Arteries on Head

- This model shows the brain structure inside the skull. Two halves brains can be disassembled into: frontal with parietal lobes, temporal with occipital lobes, half of brain stem, half of cerebellum.
- Life-size, dissectible into 9 parts.

• Price Rs. 3650.00

XC-318

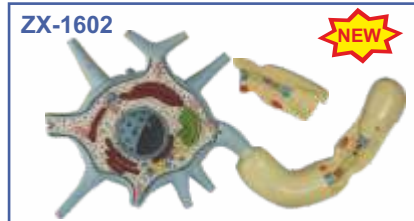


ZX-1602 Neuron

- Motor neuron model in three-dimension.
- Made of high grade synthetic polymer having long durability.
- Size : 30x20x12cm
- Beautiful painted in bright colors.
- Well illustrated and informative.
- The membranous covering has been cut away to expose the cytological ultra structure, organelles and inclusions within the cell body.
- Model shows branching dendrites, myelin-wrapped axon and node of Ranvier.
- A section of the axon can be lifted off to view the tightly-wound layers of the enveloping myelin sheath, neurolemma and the schwann cell.
- Total 19 positions are marked in the model.

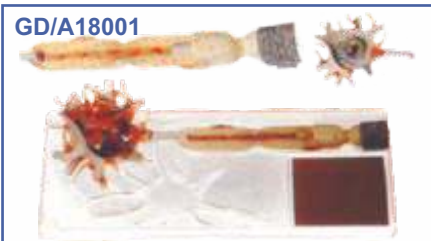
• Price Rs. 3300.00

ZX-1602



NEW

GD/A18001



GD/A18001 Neuron Model

- Consists of 2 parts.
- Shows neuronal body and nerve fiber, neuronal axon hillock, dendritic arbor, neurofilament, etc.
- Shows 15 positions.
- Made of Advanced PVC.

• Rs. 7600.00



ZX-1307

NEW

ZX-1307 Human Nervous System

- Half life size relief model of human nervous system.
- Made of HSP resin and delivered on wooden base board.
- Model is a schematic representation of the central and peripheral nervous system, including spinal nerves radiated from central nervous system to other parts of body.
- 39 positions are displayed.

• Price Rs. 4500.00

GD/A18101

Nervous System

- Mounted on board.
- Shows the structure of central nerves, peripheral nerves, including spinal nerves radiated from central system to other parts of body (such as ulnar nerve, radial nerves of brachial plexus, median nerve, ischiadic nerve).
- Shows 33 position.
- Made of Advanced PVC.

• Rs. 14100.00



GD/A18101

GD/A 18102

Spinal Cord in the Spinal Canal

- Mounted on board.
- Shows ventral side, brain stem and spinal cord.
- Branches up to the coccygeal plexus, sympathetic trunk with its connection to the central nervous system.
- Shows 47 positions.
- Made of Advanced PVC.

• Rs. 17600.00



GD/A18102

GD/A 18110

Sympathetic Nervous System

- Mounted on board.
- Shows the outlook of automatic nervous system, including sympathetic.
- Shows 53 positions.
- Made of Advanced PVC.

• Rs. 22200.00



GD/A18110

RESPIRATORY SYSTEM

ZX-1306 Human Respiratory System

- Made of advanced HSP resin.
- Size : 40x80cm. Mounted on wooden sturdy base board for easy display.
- Well illustrated and informative.
- Upper half of the model displays nasal cavity, oral cavity, trachea, bronchia, bronchial tree in pulmonary lobe, right and left lungs cut open, heart in situ, pulmonary blood vessels and diaphragm with muscles attached to it.
- 24 positions are marked in upper part model.
- Lower half of the model shows enlarged pulmonary acinus displaying pulmonary alveoli, alveolar sacculles, bronchial artery and veins and alveolar capillary network.
- Total 14 positions are marked in lower part model.
- Model is accurately made from actual specimen references, photographs and encyclopedia reference under expert guidance.



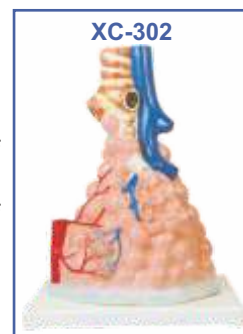
• Price Rs. 4500.00

XC-302

Pulmonary Alveoli Model Magnified

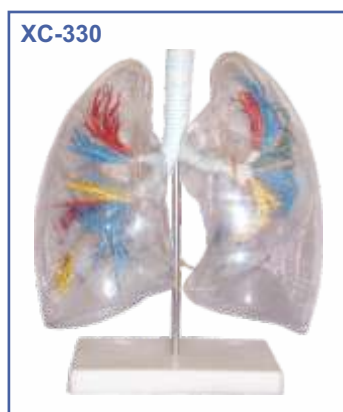
- Size: 26 × 15 × 35cm
- Made of PVC plastic and mounted on plastic base.
- The model shows the small branches of principal bronchus:
- Section of bronchiole of no cartilage.
- The relation between pulmonary alveoli and terminal bronchiole.
- The structure of alveolar sac and alveolar duct
- The capillary rete in the alveolar sapta.

• Price Rs. 1700.00



XC-330

Model of the Transparent Lung Segment



- Presents 10 segments in the right lung and 8 in the left. The distributions of the bronchial tree can be observed through the transparent lungs.
- Right lung: right upper lobe (3segments), right middle lobe (2segments), right inferior lobe (5segments)
- Left lung: left upper lobe (4 segments), left inferior lobe (4segments).
- Distribution of the bronchial tree: right bronchus, left bronchus.
- Hilus of lung. The lung made of transparent plastic. The trachea and bronchial tree is made of PVC.

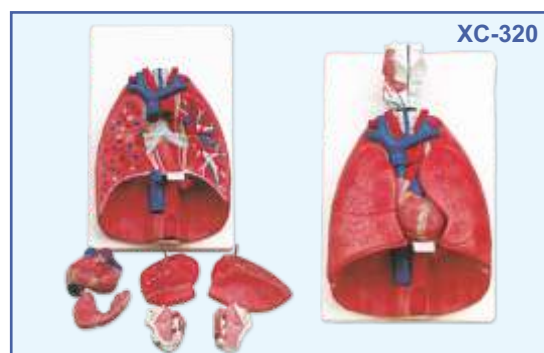
• Price Rs. 5000.00

XC-320

Larynx, Heart and Lungs Model

- Life size
- Dissect able in 7 parts
- Made of PVC plastic
- Size 36×23×12 cm

• Price Rs. 5600.00



DENTAL MODELS

ZX-NS 6503

Teeth Model in Oral Cavity

NEW



- The model made with realistic resistance of the lips and cheeks is used to simulate the Oral Cavity for real-life practice. It can be used with Hygiene Techniques Training Manikin. Excellent for Dental Schools students training and for patient's demonstrations.

• Rs. 5,600.00



Th001

Dental Care Model

- 2 Times Full-Size
 - Giant Teeth with Toothbrush.
- Price Rs. 2700.00

Th002



Th002

Dental Model Small

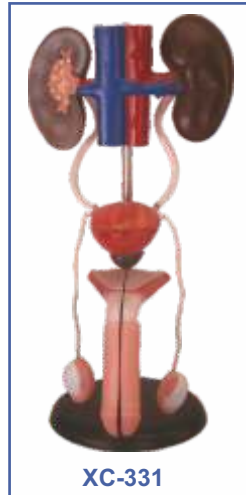
- 1.5 × Model with Hinge
- Price Rs. 1200.00

EXCRETORY SYSTEM

XC-331

Male Urogenital System

- This is intended for schools as a visual aid in teaching physiology and hygiene to help the students to understand the external features of the urogenital system of the kidney, urinary bladder, penis and testicle.
- Made of PVC Plastic.
- Size 20x20x50 cm.
- Price Rs. 1750.00



XC-331

XC-332

Female Urogenital System

- This model serves as a teaching model for teachers to teach the female urogenital system. The model shows kidney, ureters, urinary bladder, uterus, accessories of uterus, vagina, ovary membrane, ligaments, uterus ligament and its artery etc.
- Made of PVC plastic.
- Size 20x20x50 cm.
- Price Rs. 1750.00

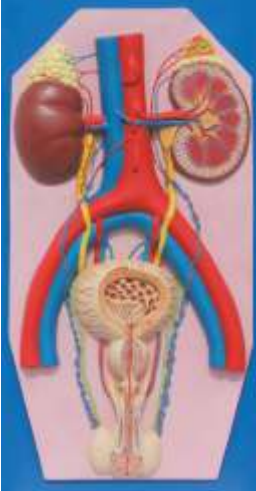


XC-332

ZX-1303 Human Excretory System

NEW

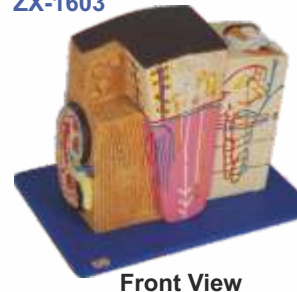
ZX-1303



- Model is made of advanced HSP resin to maintain long durability.
- Delivered on wooden baseboard for easy display.
- Size : 40x80 cm. 36 parts are labeled in total.
- Model of human excretory system shows the structures of the retroperitoneal cavity which includes : descending aorta, inferior vena cava, renal veins and arteries, ureter, urinary bladder cut open to show trigone and other structures, adrenal glands, both kidneys, iliacal vessels and prostate gland.
- Left kidney and left adrenal gland in section.
- Model also shows testis and penis in section.
- The model has anatomical details that makes it a great teaching aid.
- Price Rs. 4500.00

ZX-1603

NEW



Front View



Back View

ZX-1603 Kidney Microstructure

- It is made of advanced HSP resin and is mounted on sturdy wooden base for easy display.
- Size: 30x20x24 cm & 45 parts are labeled in total.
- Beautifully painted in advanced colours.
- A complete 3-D model shows 5 sides view of following structures in great details : kidney in section, parenchyma of kidney and nephron, renal corpuscle and associated structures, loop of henle and associated structures.

• Price Rs. 4500.00

XC-310-3



XC-310-3 Human Kidney with Adrenal Gland

- Life-size model features the kidney, adrenal gland, renal and adrenal vessels and upper portion of the ureter.
- Dissectible into 2 parts to reveal the cortex medulla, cortex vessels and renal pelvis.
- Model can be removed from the stand for instruction and patient education.
- Size: 12.5 × 12.5 × 20 cm.
- Price Rs. 1500.00

XC-333 Urinary System Model

XC-333

NEW



- The Model shows the structures of retroperitoneal cavity, pelvis with bones and muscles, inferior venacava, aorta with its branches, upper urinary tract, kidney with adrenal gland, ureter, bladder, etc.
- Dissectible into 4 parts.
- Price Rs. 6950.00

REPRODUCTIVE SYSTEM

ZX-1304

Human Reproductive System Male

- Made of HSP resin for long durability.
- Upper half part shows median section of the system showing both internal and external organs of the system.
- Internal organs (accessory organs) shown in great detail are epididymis, vas deferens, ejaculatory ducts, urethra, seminal vesicles, prostate gland and bulbourethral gland.
- External structures shown are penis, scrotum and testicles.
- Total of 24 parts are labeled in upper half model.
- Lower half shows the model of scrotum and contents along with the penis.
- Total of 17 parts are labeled in lower half model.

ZX-1304



• Price Rs. 4500.00

ZX-1305

Human Reproductive System Female

- Made of advanced HSP resin and beautifully painted in advanced colours.
- Upper half model shows both ovaries, left ovary in section, fallopian tubes with fimbriae, uterus, cut open vagina to show vaginal folds and cervix, bladder with cut open urethra, labia and rectum.
- Total 20 positions are marked in upper half model.
- Lower half model shows adnexa of uterus.
- Size : 40x80 cm. Total 36 positions are marked in lower half model.
- Model is a great teaching tool for anatomy lessons.

ZX-1305



• Price Rs. 4500.00

GD/A15102 Male Genital Organs

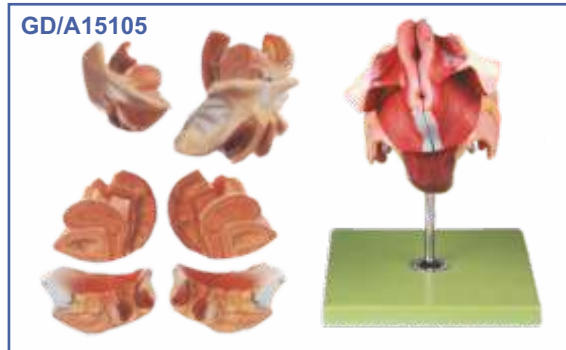
GD/A15102



- Dissected in median and mounted on a stand.
- Shows the penis, prostate, bladder, seminal vesicle, spermatic cord & inguinal canal and base.
- Shows 72 positions.
- Made of Advanced PVC.

• Rs. 10200.00

GD/A15105



GD/A15105 Female Genital Organs

- Dissected & mounted on a stand.
- Shows internal & external female genital organs.
- Shows 40 positions.
- Made of Advanced PVC.

• Rs. 8600.00

XC-429 Female Internal & External Genital Organs

XC-429



- This model is served as a visual aid in teaching human anatomy in nursing and medical colleges.
- It shows the female genital organs including uterus, uterus appendix (fallopian tube, ovary and its membrane, ligament teres uteri, ligament ovary proprium), vagina and the structure of external genital organ.
- Part of uterus & vagina are dissected to show its internal structures. Size: life-size.

• Rs. 1350.00

GD/F5N IUD Training Simulator

Features:

- Basing on real anatomy of female genitalia, we designed this model for instructing or training of insertion or removal IUD.
- The uterus is in coronal section and covered with transparent plastic window. So students can directly observe whole insertion or removal process.

• Price Rs. 5100.00

GD/F5N



GD/F5M

GD/F5M Male Condom Model

- The model is designed for male condom skill training
- The model is mounted on a Lucite stand.
- The anatomy is accurate and the shape is realistic.

• Rs. 5400.00

GYNAE & OBSTETRIC MODELS

XC-332B



XC-332B Human Female Pelvis Section (4 parts)

- This median section models shows normal position of child before birth
- Removable fetus.
- Made of PVC plastic
- Size 38×25×40cm

• Price Rs. 6450.00

GD/A42004



GD/A42004 Embryo Model

- Mounted on stand.
- Made of Advanced PVC.
- 4 weeks old embryo.
- Shows 12 positions.

• Price Rs. 3200.00

GD/A41003



GD/A41003 Ovary Model

- Consists of 8 parts, mounted on stand.
- Shows ovary, primary and secondary ovarian follicles, ovum, ovulation, ovum, corpus luteum, corpus albicans.
- It demonstrates the procedure of ovum's development.
- Shows 10 positions.
- Made of Advanced PVC.

• Price Rs. 17900.00

GD/A42010/1 Human Placenta

- Mounted on stand.
- Made of Advanced PVC.
- Shows the structure of placenta and the relation between placenta and umbilical cord.
- 7 positions are displayed.

• Price Rs. 3200.00

GD/A42010/1



GD/A42002 Human Fertilization and Early Embryogeny

- Shows the development from ovum to the fetus in third month
- 16 positions are displayed
- Material: Advanced PVC

• Price Rs. 38600.00

GD/A42008 Fetus with Viscera and Placenta

- Made of Advanced PVC.
- Shows a female fetus at the end of the pregnancy with placenta and umbilical cord.
- Separated into 13 parts as follow: Placenta, umbilical cord, abdominal cover, lungs, heart, thymus, diaphragm, liver, stomach, intestine, body.

• Rs. 16600.00

GD/A42008



GD/A42001 Fertilization Process Simulator

- Shows two frontal sections through female genital organs
- Mounted on a board. 25 positions are displayed
- Material: Advanced PVC

• Price Rs. 11800.00

GD/A42001





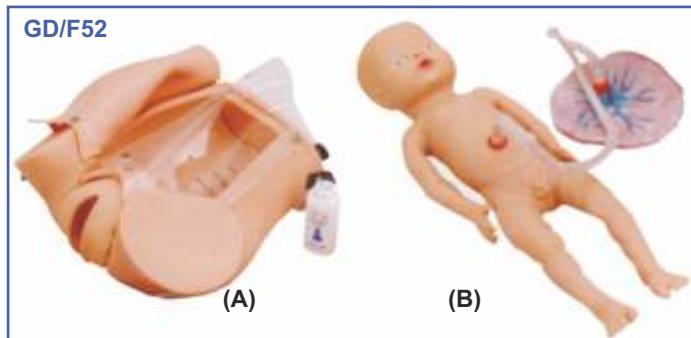
XC-414

The Development Process of Fetus

- Made of PVC and synthetic rubber.
- The model consist of 10 parts and shows the relationship between fetus and Uterus during the gestation period.

Part No.	Gestation Month	Appearance/height of fetus
1st	Normal Uterus	Inner genitals
2nd	First	Placenta is shown
3rd	Second	Embryo looks like human.
4th	Third	Fetus is about 9 cm .
5th	Fourth	Fetus is about 16 cm.
6th	Fifth	Fetus is about 25 cm.
7th	Sixth	Fetus is about 30 cm.
8th	Seventh	Fetus is about 35 cm.
9th	Eighth	Fetus is about 40 cm.
10th	Ninth	Fetus is about 45 cm.

• Price Rs. 30800.00

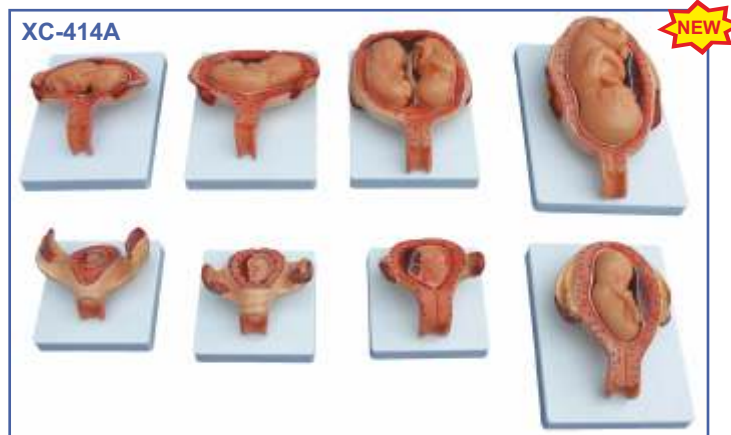


GD/F52 Advanced Delivery Mechanism Demonstration Simulator

Features:

- Demonstrate the whole process of delivery;
- Demonstrate the fetus, umbilical cord and placenta of vacuum-assisted delivery, flexible fetal joint and multiple normal and abnormal positions of fetal delivery can be showed;
- Can practice and master the comprehensive skills of normal labor, abnormal labor (dystocia), midwifery and perineum protection
- Available training of multiple pregnancy (twin pregnancy)
- Component: A (Matrix For Delivery Demonstration) + B (Fetus For Demonstration)

• Price Rs. 71500.00



XC-414A

The Development Process of Fetus (Half Size)

- This model shows relationship between fetus and uterus in 1st, 2nd, 3rd, 4th, 5th, 6th, 7th month pregnancy, and twins course in the 5th month.
- Consist of 8 parts.

• Price Rs. 21600.00



GD/F54 Advanced Abdominal Palpation and Delivery Mechanism

Features:

- Demonstrate the fetus, umbilical cord any placenta of vacuum-assisted delivery, flexible fetal joint ad multiple normal and abnormal positions of fetal delivery can be showed.
- Equipped with manual delivery mechanical parts; by manual the whole delivery process including engagement, descending, flexion, internal rotation, extension, restoration, external rotation and fetal delivery can be showed.
- Can practice and master the comprehensive skills of normal labor, abnormal labor (dystocia), midwifery and perineum protection.
- Equipped with soft elevated cushion for Leopold Maneuver practice.
- Euipped with models for cervical and vaginal examination practice before and a birth.
- Component : B (Fetus for Demonstration) + C (Matric for Manual Delivery Demonstration) + D (Cervical Changes Models) + E (Lifting Soft Pad for Leopold Maneuver Practice)

• Price Rs. 82600.00

GD/F8

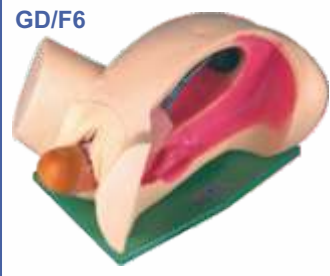


GD/F8 Vacuum Delivery Model

- The simulator can help to demonstrate all the process of delivery.
- The life-size pelvic cavity has main anatomical structures. It can help to train the skills of delivery.

• Price Rs. 25600.00

GD/F6

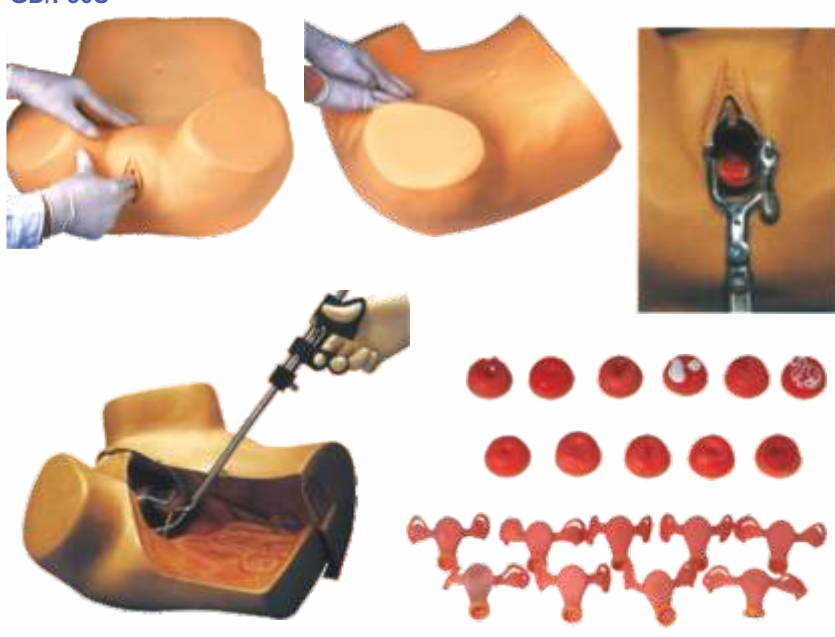


GD/F6 Leopold Maneuvers Simulator

- The model shows the seven stages of birth: engagement-descent-flexion-internal rolling-spread-reposition and external rolling-childbirthing.

• Rs. 26500.00

GD/F30S



GD/F30S

Gynaecological Examination Model

- This Gynecological Training Model is specifically deigned for professional training. The various functions of this model are as follow:-
 1. Palpation of normal and pregnant uterus;
 2. Bi-manual pelvic and tri-manual pelvic examination;
 3. Vaginal examination;
 4. Visual recognition of normal and abnormal cervixes;
 5. Contraceptive sponge insertion and removal;
- Observation of uterus, ovary, fallopian tubes and ligament teres.

• Price Rs. 62500.00



GD/F35

GD/F35 Advanced Gynaecological Training Simulator

- Including all the functions of GD/F30S.
- Hysteroscopy Checking.
- Laparoscopic visualization checking can observe the uterus, accessories, round ligament, uterine and other structures.
- Allow to place the female condoms, contraceptive sponge, cervical cap and other contraceptives. Cervix and uterus can be replaced.

• Price Rs. 104500.00



GD/F3A



NEW

GD/F3A

Episiotomy Training Simulator

- This model is designed for practice of perineum cutting and suturing.
- The main structure of the simulator is a perineum, which is made of simulative and the inner muscle is soft PVC. The simulator is mounted on a plastic framework.
- There are two handles in the back and bottom of the simulator to adjust tension of the perineum.
- Right posterior incision, left posterior incision or median incision can be selected to exercise perineum cutting and suturing.

• Price Rs. 19600.00

GD/F3B



GD/F3B

Vulva Suturing Training Simulator

- The models demonstrate the vulva in different position in pudendum.
- It's made of soft materials, can be used in many times suturing training.

• Rs. 9700.00

ZX-GP6611 Cervical Lesion Model

ZX-GP6611

- Exhibit board present 2 normal uterus, 6 diseased uterus for demonstration
- Model represents :
 - (1) Delivered
 - (2) Not Delivered
 - (3) Acute purulent cervicitis
 - (4) Infected cervical adenocarcinoma
 - (5) cystis
 - (6) polyp
 - (7) lacerated wound
 - (8) Cancer
- Observe and diagnose cervical lesions

• Rs. 14,500.00

GD/FW2



GD/FW2 Maternity Examination Model

- Specifically designed for professional training. The various functions of this model are as follow:-
- Palpation, embryo heart sound auscultation, pelvic measurement and mammary nursing training;
- Inflating uterus through ball to make model to be lifelike;
- Adjustable heart sound speed, volume;
- Heart sound can be heard not only from stethoscope but also from microphone of front board of model.

• Price Rs. 88400.00

GD/F20G



GD/F20G Labour Delivery Simulator

- This series models consists of six development phases and each parts shows a state of prenatal cervix and birth canal. The whole models demonstrate the relations between the scope of the expanding of the orifice of cervix and the range of cervical tunnels, as well as the relation between the position of the head of fetus and the square of ischial spine.
- The orifice of cervix has no expanding and the cervical tunnels haven't disappeared at all. The positional relation between the head of fetus and the square of ischial spine is -5.
- The orifice of cervix has expanded 2cm bigger and the cervical tunnels disappear 50%. The positional relation between the head of fetus and the square of ischial spine is -4.
- The orifice of cervix has expanded 4 cm bigger and the cervical tunnels disappear absolutely. The positional relation between the head of fetus and the square of ischial spine is -3

The orifice of cervix has expanded 5 cm bigger and the cervical tunnels disappear absolutely. The positional relation between the head of fetus and the square of ischial spine is -0

• Price Rs. 30600.00

ADVANCE DELIVERY & EMERGENCY SIMULATOR

GD/F55 Advance Delivery & Maternal & Neonatal Emergency Simulator

Automatic Birthing System. Fully simulates the real delivery process with CPR Pregnant Woman

Advanced Delivery and Maternal and Neonatal Simulator is a comprehensive education system, which consists of a delivery maternal manikin and a normal newborn, according to the basic requirement of obstetrics, providing a complete birth experience and emergency skills operation. Simulator features includes automatic delivery system, fetus and placental expulsion, prenatal cervix examination and postpartum episiotomy, prenatal gravida and fetus and postpartum maternal and neonatal care, removable stomach cover, multiple fetal heart sounds auscultation and CPR operation etc. The model is made of imported PVC material. The stomach wall is injection molded. Perineum is made of sponge emulsion material, features soft texture, good flexibility, realistic operation, reasonable structure and durability. It is one of the ideal teaching aids for clinical obstetrics practice training.

FEATURES: SYSTEM COMPONENTS:

- Delivery and adult emergency used maternal manikin
- Emergency and nursing neonatal manikin
- Child birthing fetus
- Delivery process and fetal heart sound controller
- Adult CPR electronic display
- Simulative cervical os
- Postpartum 48 hours uterus
- Postpartum perineum incision and suturing modules
- Simulative placenta/umbilical cord
- Lifting "Soft pad" for Leopold maneuver practice
- Other auxiliary utensils
- Antepartum cervical changes and birth canal relation modules

MATERNAL MANIKIN FEATURES:

- The mechanical gear device is equipped with two mechanical adapters for connecting simulative delivery fetus; fetus and adapter, the adapter and adapter, adapter and gear device are all fixed with elastic clamp device. There are system protective limit switches on both top and lower end of the gear device.
- The delivery process and fetus heart sound controller can suspend, initialize, start and continue the delivery process; delivery speed is adjustable according to requirement, have 1 -4 steps;
- Fetal heart sound auscultation: can set fetal heart sound frequency and volume, heart rate is adjustable between "80-180"
- Can simulate head birth, breech delivery, narrow birth canal, cord around neck, fore-lying placenta, etc;
- With highly simulative cervix
- Equipped with lifting "Soft pad" for practicing Leopold maneuver;
- Equipped with antepartum cervical change and birth canal change modules, which can be fitted to maternal manikin for training;
 - Stage 1: no dilation of cervix; cervical canal does not disappear; position relation between fetal head and ischial spine plane is -5;
 - Stage 2: 2 cm cervical dilation; disappearance 50% of cervical canal; position relation between fetal head & ischial spine plane is -4
 - Stage 3: 4cm cervical dilation; cervical canal disappears; the position relation between fetal head & ischial spine place is - 3;
 - Stage 4: 5cm cervical dilation; cervical canal disappears; the position relation between fetal head and ischial spine place is 0;
 - Stage 5: 7cm cervical dilation; cervical canal disappears; the position relation between fetal head and ischial spin place is+2;
 - Stage 6: 10cm cervical dilation; cervical canal disappears; the position relation between fetal head and ischial spine place is+5;
- Can measure fetal head descent and cervical dilation
- Can simulate multiple placenta position
- Can set venous channel in maternal arm for giving administration and nutrition
- Vulvar suture practice modules, including left lower, medial and right lower three incision position
- Tracheal intubation training
- Manually simulate carotid artery pulse

NEONATAL MANIKIN FEATURES:

- Holistic function
- Nursing features: eye irrigation and drops, neonatal washing and bandaging
- Oral and nasal intubation, infant sputum suction, tracheal intubation and gastric lavage
- Infant umbilical cord nursing, scalp vein puncture, arm venous puncture, there is obvious feeling for venous puncture, and blood flash back indicated correct puncture
- Neonatal CPR
- Supports multiple ventilation ways: mouth to mouth, mouth to nose, bag respirator to mouth Can act artificial respiration Can act external compression

MATERNAL MANIKIN CPR TRAINING:

- Complying with AHA (American Heart Association) 2005 emergency guideline for CPR, can act artificial respiration and external compression; electronic monitoring of operation data with voice prompt; can observe obvious chest rise while inflation.

• Price on Enquiry



PAEDIATRICS MODELS

XC-409 Newborn Baby Model



XC-409

- The size and configuration of this model is almost same as the normal newborn baby. The head, upper limbs, lower limbs and all joints are flexible. It can demonstrate the characteristic of the newborn baby and all kinds of operations in clinic education : includes different parturition method, newborn baby bath etc.
- Made of soft PVC plastic. Washable. Length 52 cm, Head diameter : 34 cm.

• Price Rs. 2300.00

XC-409A New Style Newborn Baby Model



XC-409A

- The size and configuration of this model is almost as same as the normal newborn baby. The head, upper limbs, lower limbs and all joints are flexible. It can demonstrate the characteristics of the newborn baby and all kinds of operations in clinic education includes different parturition method, newborn baby bath etc.
- Made of soft PVC plastic.

• Price Rs. 2850.00



GD/FT1



GD/FT1

New Born Baby

- This model is made of PVC material and developed by moulding method. It has realistic shape and reasonable structure and a high durability.

• Price Rs. 7150.00

GD/FT4

New Born Baby Model

- This model is made of PVC material and developed by moulding method. It has realistic shape and reasonable structure and a high durability.

• Price Rs. 8000.00



GD/FT4



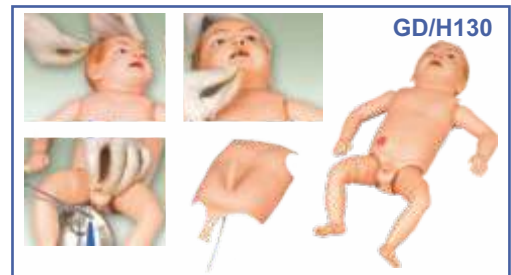
NURSING MANIKINS

GD/H130 Advanced Nursing Baby

- Specifically designed for professional nursing training.
- High quality manikin provides wide range of exercises
- Possible including both first aid and emergency situations.
- Basic Nursing Skill :-
- Movable head, neck, hand and foot;
- Cephalic vein puncture;
- Umbilic vein injection;
- Oronasal intubation nursing;
- Stomach washing, clyster and catheter nursing;

- Ostomy;
- Hand-foot subcutaneous injection;
- Washing, lactation, dressing.

• Rs. 40900.00



GD/H130

GD/FT333 Advanced Multi-functional Child Nursing Manikin (Unisex)

Designed according to the anatomical characteristics of child, and specializing in child care training. The skin is soft and flexible, not easily deformed, realistic shape, lovely appearance, and clear internal anatomical structure. Good help for pediatric nursing teaching and training.

Features:

- Pupil observation. Bilateral Pupil states: normal, mydriasis,
- Operations of child care: full body bandage exercise, bathing, changing clothes, hair combing, eye washing and administering, otic drops and irrigation, mouth cavity care, blood collection of finger and TB test.
- Airway administering: realistic mouth, nose, tongue, gum, pharynx, larynx, esophagus, epiglottis, trachea and tracheal ring, can practice tracheal intubation, sputum suction, oxygen inhaling.
- Oral and nasal feeding. Gasrolavage
- Venipuncture, injection, transfusion (Arm). When needle penetrates into vein, blood flash back indicates proper insertion.
- Intramuscular injection in bilateral deltoid, bilateral vastus lateralis and bilateral buttock. Enema, placement of rectal suppository.
- Urethral catheterization
- Holistic care: sponge bath, replacing clothes, cold and heat therapy
- Limbs joints: Bend, rotation, upper and lower movement.
- Bathing and bandaging activity
- Ostomy nursing of ileum, colon and bladder.
- Tibial bone marrow puncture: Simulated bone marrow would outflow in the case of correct puncture.



GD/FT333

• Rs. 78800.00

NURSING MANIKIN

ZX-NS6002 Multifunctional Nursing Simulator (unisex) with Interchangeable Breast Cancer Plate



- Designed according to the demand of the clinical principles and the guidelines of nursing training.
- This multi functional simulator could simulate an actual circumstance for practice.
- Multiple functions, rural practice, easy assembly, well shaped appearance and correct anatomical landmarks provides a very good training for practice.

• Rs. 78,000.00

GD/H220B Full-functional Elderly Nursing Manikin (Female)

The manikin is designed according to the physiological characteristic of female old people for basic clinical nursing training. The product consists of full-body female elderly manikin and non-invasive blood pressure simulator; with about 50 kinds or nursing functions, made of imported PVC material, fine quality, environmental protection, realistic shape as human, easily washable; these help nursing workers understand and care for old people during the nursing process.

Basic nursing functions:

- Hair and face washing
- Pupil observation, Bilateral pupil states; normal, mydriasis
- Eye and ear washing and administering
- Removal and insertion of hearing aid
- Oral cavity and artificial teeth care
- Endotracheal intubation, automatically monitor whether the tracheal intubation is correct or not through sensor, support auscultation to detect intubation site
- Incision of trachea nursing
- Sputum suction
- Oxygen inhaling
- Oral and nasal feeding
- Gastrolavage
- Venipuncture, injection, transfusion (arm)
- Deltoid subcutaneous injection
- Vastus lateralis injection
- Thoracic cavity, abdominal cavity, liver, bone marrow and lumbar puncture
- Breast nursing, mammary gland examination
- Enema
- Male / Female urthral catheterization
- Male / Female bladder irrigation
- Stoma drainage
- Colostomy
- Buttocks intramuscular injection
- Large area of sacral ulcer
- Cancer tumor contrast
- Cleavage lines contrast
- Holistic nursing: sponge bath, replacing clothes, cold and hot therapy



- Realistic limbs joint, stiff simulative joints, truck may lean forward, can sit it the wheelchair
 - 1) Truck - rotation, flexibility
 - 2) Neck - rotation, flexibility, lateral curvature
 - 3) Shoulder and buttock-endoduction, abduction, rotation, flexibility
 - 4) Elbow - internal rotation, external rotation
 - 5) Knee - internal rotation, external rotation
 - 6) Wrist - internal rotation, flexibility, stretching, bending
 - 7) Ankle - introversion, eversion, endoduction, abduction
- Non-invasive blood pressure measurement
 - 1) Systolic and diastolic pressure may be set individually in steps of 1mmHg
 - 2) Systolic pressure 0-300mmHg, diastolic pressure 0-300Hg
 - 3) Korotkoff sound volume in ten steps, 0-9
- Diabetes foot nursing

• Price Rs. 1,04,500.00



GD/H100S Basic Combination Nursing Manikin

- Full-body lifelike manikin.
- Designed for professional nursing training.
- It provides wide range of exercises possible including both first aid and emergency situations.
- Nursing Skill:-
 - Bed bathes, dressing and undressing
 - Hair washing, face washing
 - Irrigation of the eyes and ears
 - Oral cavity care
 - Oxygen inhalation
 - Nasal feeding
 - Lavage
 - Oral cavity nasal cavity intubation
 - Tracheotomy care
 - Organs structure of Thorax,
 - Venipuncture & injection,
 - transfusion
 - Deltoid injection
 - Urethral Catheterization for male & female
 - Irrigation of bladder for male and female
 - Gluteus injection
 - Ostomy irrigation.
 - Organs structure of abdominal cavity

Rs. 62000.00



GD/H120A Advanced Nursing & Wound Care Manikin (Male)

- Full-body lifelike male manikin.
- Specifically designed for professional nursing training.
- High quality manikin provides wide range of exercises possible including both first aid and emergency situations.

NURSING SKILL :-

- Head care: hair washing, face washing
- Irrigation of the eyes and ears
- Oral cavity care
- Oral cavity and nasal cavity intubation
- Oxygen inhalation
- Oral and nasal feeding
- Lavage
- Organs structure of thorax
- Vein puncture and injection, transfusion,
- Deltoid injection
- Puncture of thorax, abdominal cavity, liver medulla and lumbar
- Enema
- Urethral Catheterization for male and female
- Irrigation of bladder for male and female
- Ostomy Irrigation
- Gluteus injection
- Organs structure of abdominal cavity
- General care, bed bathes, dressing and undressing
- Wound care: disinfection, dressing change, binding, hemostasia.
- Trauma parts;
 - a. The suturing care for the wound on the chest wall
 - b. The suturing care for the wound on the abdomen
 - c. The suturing care for the wound on the thigh
 - d. The care for the bruise of the skin of the thigh
 - e. The care for the infectious ulceration
 - f. The care for the foot gangrene
 - g. Wound of forearm amputation
 - h. Wound of calf amputation

• Rs. 83600.00

GD/H2 Multi-Functional Nursing Manikin

This Nursing Manikin can demonstrate the following Basic Nursing Skills:-

- Face washing and swab down;
- Oral cavity nursing;
- Tracheotomy nursing;
- Oxygen inbreathe;
- Nasal feeding;
- Stomach washing;
- Intracardiac injection;
- CPR first aid;
- Mammary nursing;
- Thoracic puncture;
- Liver puncture;
- Celiac puncture;
- Medulla puncture;
- Lumbar puncture;
- Deltoid puncture;
- Deltoid subcutaneous injection;
- Vein injection;
- Vein puncture;
- Vein transfusion;
- Female catheter;
- Female clyster;
- Gluteus intramuscular injection.

• Rs. 25000.00



AED Trainer

NEW



AED01 AED Trainer

- The AED Trainer with Replaceable Language/Scenario Card is designed to effectively train emergency responder in the use of an Automated External Defibrillator (AED). This training unit provides a variety of pre-programmed scenarios to help responders become familiar with an AED and allow them to demonstrate the basic skills necessary to use an AED in an emergency.
- AED Trainer provides simulated shock delivery. It has no high-voltage capabilities, and cannot deliver a shock, thereby ensuring safety during training.

• Rs. 18,000.00

NEW



AED+ CPR01

AED Trainer & CPR Trainer

- The below (MB001B+) mentioned AED CPR & Trainer Manikin are available in combo pack.

• Price Rs. 32000.00

CPR MANIKINS

MB001B+ CPR Training Manikin (Torso)

- The Manikin is the only manikin in the market which includes both Adult and Child CPR simulator in one product.
- Economic and profitable product.
- Light weight: 2.2Kg makes easier storing and transport for trainers.
- The selector on the back allows to chose Adult or Child position.
- Adult and child position include a clicking sound for checking the correct compression depth according to Guidelines 2015.
- "N" position on the selector allows to check without a clicking sound and without depth limit the acquired skills.
- The Manikin breathing system is real and exclusive on the market.
- The unique valve design allows to be connected nose-mouth-lung.
- The non-return system of the valve doesn't allow students inhale air from the lung bag helping to avoid Contagions.
- If the exclusive articulated head is not tilted properly and the nose is not pinched there will be no chest rise.
- Manikin is essential as complement of the AED trainer (not included).
- The torso design of Manikin and its size is proper to use AED trainer.
- The Manikin skin material is proper for using AED training pads and easy cleaning.

• Price Rs. 16000.00



MB001B CPR Training Manikin (Torso)

- MB001 Same as above but without accessories.

• Price Rs. 13000.00

Accessories For MB001B+, MB001

SP001 Lungs Bags	(Pack of 24 pcs.).....	Rs. 4200.00
SP002 No Return Valve	(Pack of 8 pcs.).....	Rs. 920.00
SP003 Face Shield	(Pack of 50 pcs.).....	Rs. 3000.00
SP004 Face Skin	(Pack of 8 pcs.).....	Rs. 4200.00
SP005 Chest Skin	(Pack of 4 pcs.).....	Rs. 3200.00
SP006 Transport Bag	including Mat.....	Rs. 1800.00

ZX-CPR2300 Advanced CPR Training Manikin with Monitor

- Implement Standard :The 2010 AHA Guidelines for CPR and ECC.
- This new designed CPR Training manikin has a better shape and functions for a much professional practice for those who are not professional in CPR Training.
- Correct anatomical landmarks, skin-touch feeling, life like colour, realistic shape and durable material provide a good practice experience for students.
- LED lights display the compression depth and ventilation strength.
- For Correct Compression depth, the LED strip would be in the range of green. For incorrect compression depth, less than 5cm, the LED strip would be in the range of yellow.
- Correct and incorrect displays in artificial ventilation - While correct mouth-to-mouth ventilation, the air volume in ventilation shall be between 500-600 ml, the green light will be on. If the air volume is less or excessive than the correct range, the LED strip would be in the range of yellow or red. Much excessive ventilation would make air into the stomach.



• Rs. 1,03,000.00

GD/CPR 10280 Advanced Adult CPR Training Manikin



- This simulation of Adult Model is designed according to the International CPR standard. In this model there is Light Indicator Display for Correct and Incorrect Artificial Respiration (Mouth-to-Mouth).
- There is light Indicator Display for Correct compression position display, Wrong Compression position display, digital counter.
- This model Simulate the patient revival through first aid by measures of Heart Pressure and Mouth-to-Mouth respiration.
- This model also shows whether the operation is correct or not by Light Indicator, Audio Prompting and Grade Printing. An Ideal model for use in Hospital, Medical College and Nursing Training Institutes.

• Rs. 1,26,700.00

ZX-CPR1950 Advanced Half Body CPR Training Manikin with Light

- Operation Standard: AHA 2010 Guidelines for CPR & ECC
- This product is developed and produced by professionals in the purpose of providing an improved and convenient CPR training manikin for medical college, hospital and department of health's training program;
- Accurate anatomical landmark, realistic texture, durable, resistance to deform and convenient to disassembly & assemble
- Compression indication: Suitable Strength (depth>5cm) in correct position, the green light turns on. And a buzzing sound comes out. Wrong compression position, red light turns on.
- Insufficient strength, yellow light turns on and a buzzing alarm comes out.



• Rs. 62,500.00

ZX-CPR1900 Half Body CPR Training Manikin without Light



ZX-CPR1900

- This product is developed and produced by professionals in the purpose of providing an improved and convenient CPR training manikin for medical college, hospital and department of health's training program;
- Accurate anatomical landmark, realistic texture, durable, resistance to deform and convenient to disassembly & assembly.
- Standard procedure and cautions:
- In training mode, compression and ventilation don't have to be practiced in order
- When used for examination, operate in compliance with AHA 2010 CPR & ECC standards. Repeat 5 rounds.
- Compression indication:
- Correct Strength : In correct position, a high tone buzzing sound for indication.
- Insufficient strength (depth < 5cm), a low tone buzzing sound for indication.

• Rs. 36,500.00

GD/CPR 10170 Half-body CPR Training Manikin

- According to 2010 international CPR standard, the product is upgraded from GD/CPR170S.
- Implement standard : AHA (American Heart Association) 2010 guideline for CPR and ECC
- CPR manikin features:
- Can perform airway open
- Can perform artificial breathing and external cardiac compression
- While performing artificial aspiration, judge inflation volume by chest rise
- External chest compression, correct compression depth: 5-6 cm
- Correct compression site, prompt correct buzzing sound
- Excessive compression site, prompt alarming buzzing sound
- Operation frequency: >100#/min, with "tick" sound. Power: battery

• Price Rs. 57000.00

GD/CPR 10170



ZX-CPR1600 Advanced Infant CPR Training Manikin

- Implement Standard: the 2010 AHA (American Heart Association) Guidelines for CPR and ECC.
- The manikin is designed in accordance with the anatomical structure and characteristics of infant. It could practice infant CPR training, the monitor supervises the ventilation volume and the compression depth.
- Correct or incorrect compression and ventilation would be indicated by the indicator light.
 - (1) The correct depth is indicated by the green LED strip lights.
 - (2) The incorrect depth would be demonstrated by the yellow LED strip lights.
 - (3) The corresponding indicator light would be on when airway opened.
- Artificial Ventilation: The operator could make mouth-to-mouth ventilation with both infant nose and mouth covered by operator's mouth.
 - (1) The proper ventilation volume is 30-50 ml, it would be indicated by the LED strip lights which would turn in green color then.
 - (2) Ventilation volume less than 30 ml, the LED strip lights would turn yellow to indicate the insufficient volume.
 - (3) Ventilation volume more than 50 ml, the LED strip lights would turn red to indicate the excessive volume.

• Rs. 73,000.00



ZX-CPR1600

GD/CPR 10150 Advanced Infant CPR Training Manikin



GD/CPR 10150

- This Simulation of Infant Model is designed according to the international CPR standard.
- In this model there is Light Indicator Display for Correct and Incorrect Artificial Respiration (Mouth-to-Mouth).
- There is Light Indicator Display for Correct Compression position display, Wrong Compression position display.
- This model Simulate the patient revival through first aid by measures of Heart Pressure and Mouth-to-Mouth respiration.

• Rs. 82800.00

GD/FT335 Advanced Full Functional Neonatal Nursing & CPR Manikin

The product is designed according to the standard size of new born baby, which allows neonatal nursing operation and CPR and Airway management Training.



- Basic nursing operating : bathing change/wear clothes, cold and heat therapy, washing face, oral cavity nursing, ear irrigation, umbilical care;
- Venous puncture/infusion : venae temporalis superficilials, right arm vein, etc ;
- Airway management: Realistic oral, nose, tongue, gums, pharynx, Larynx, esophagus, epiglottis, trachea ; oral and nasal tracheal intubation ; sputum suction, oxygen inhalation ;
- CPR : multiple ventilation ways such as mouth to mouth, bag respirator to mouth; compression and inflation frequency prompts; judge whether the inflation volume and compression depth is right or not ; compression and inflation training can be carried out at the same time or can be undertaken separately.

• Rs. 88900.00

MEDICAL MODELS

GD/J110 Advanced Trauma Simulator

Features:

- Washing, disinfection, hemostasia, enswathement etc.

- Open fracture, truncation trauma

Features of Advance trauma manikin:

- Facial burn: I, II, III degree
- Laceration in forehead
- The wound in jaw
- Opened clavicular fracture and contusion wound on the chest
- The wound in abdomen with small intension evisceration
- Opened humerous fracture of right upper arm
- Opened fracture of right hand (including parenchyma laceration, fracture and bone tissue exposure)
- Gun wound in the right palm
- Opened fracture of right thighbone
- Compound femur fracture of left thigh
- Metal pricking wound in right thigh
- Opened tibia fracture of right leg

GD/J110



- Opened fracture of right foot with truncating trauma on small phalanx
- Burns in left forearm: I, II, III degree
- Truncating trauma on left thigh
- Closed tibia fracture of right leg and contusion wounds in left ankle and foot.

• Price Rs. 1,29,000.00

GD/LV18 Surgical Suturing and Bandaging Simulator

The simulator provides commonly used surgical incisions, which simulate all kinds of female thoracic and abdominal incisions, tube drains and amputation stump. Students can practice wounds treatments of washing, disinfecting, changing dressing, bandaging and etc. The skin is dry, soft and flexible, allowing the bandages to adhere better.

Features:

- | | |
|--|---|
| • Thyroidectomy | • Abdominal Hysterectomy (Transverse incision) |
| • Mid-sternal split - with two chest tube drains | • Left nephrectomy (thoraco-abdominal incision) |
| • Right mastectomy - with simulated drain | • Right nephrectomy (oblique incision) |
| • Right cholecystectomy - with simulated T-tube | • Laminectomy |
| • Laparotomy | • Sacral decubitus ulcer - stage 2 |
| • Appendectomy | • Right thigh amputation stump |
| • Left colostomy | |
| • Right ileostomy | |

• Price Rs. 71900.00

GD/LV18

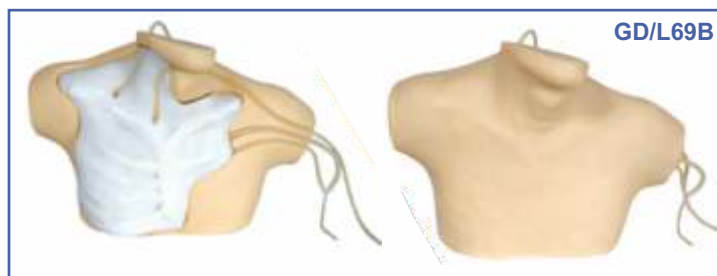


GD/L69B Central Venous Catheterization Simulator

The cervical veins are filled with red simulative blood for internal jugular vein and subclavical vein puncturing use. Squeeze bulb can simulate carotid artery pulse. With accurate anatomy, palpation is exactly the same as on a patient. Replacing of the internal tubing and skin is extremely easy.

Features:

- Cervical anatomical landmarks are quite clear and indicate structures of the sternal notch, clavicle, right cervical ribs, sternocleidomastoid and etc.
- Venous system in the deep part of left neck consists of common carotid artery, internal jugular vein, external jugular vein, subclavical vein and brachiocephalic vein.
- Internal jugular vein puncture and cannulation can be exercised.
- Subclavical vein puncture and cannulation can be exercised.
- Carotid artery pulse can be simulated
- The skin and veins can be replaced and students will feel an apparent
- "POP" when the needle has been thrust into the vein.



- The heart floating swan-ganz intubation can be exercised.
- Price Rs. 83000.00

GD/L69C PICC Line (Peripherally Inserted Central Catheter)

GD/L69C



The model is suitable for central venipuncture of internal carotid vein and subclavical vein and peripheric venipuncture (arm veins) of cephalic vein. The cervical veins and arm veins can be filled with simulative blood.

Features:

- The model is a simulative right half of adult torso with right arm. There are apparent anatomical marks: clavicle suprasternal notch, sternocleidomastoid muscle, pectoralis major muscle, ribs and deltoid muscle.
- Lifelike veins: Superior vena cava, internal jugular vein, subclavical vein, cephalic vein, basilic vein and median cubital vein etc.
- With apparent anatomical marks, the model can be used to train puncture and catheterization of internal carotid vein, subclavical vein, cephalic vein and heart catheterization.
- The skin and veins can be replaced, Students will feel an apparent "POP" when puncture needle has been thrust into the veins.
- The heart floating swan-ganz intubation can be exercised

• Price Rs. 82300.00

GD/L69D Advanced Neonatal Peripheral and central Vein Intubation Simulator

Designed according to the physiological and anatomical characteristic of neonate, made of imported plastic material, soft and elastic skin, easy to clean and provide technology of inserting into central vein catheter via peripheral vein.

Features:

- Transparent chest wall and made of special material, perspective effect of bilateral venous channel
- Correct anatomical position: basilic vein, cephalic vein, jugular vein, subclavian vein and superior vena
- Direct observation of rib and heart, measure the correct inserted length of catheter
- Transparent part of the superior vena and visible of the ductal position in the case of correct catheterization or the catheter is invisible;
- Exercise of standard venous catheterization position

• Price Rs. 62800.00



ZX-NS6005



ZX-NS6005 Multifunctional Intravenous Injection Arm Model

- The simulator simulates an adult arm, with veins and arteries attached inside. The durable material helps to make a very good skin-touch feeling. The anatomical landmarks are correct.
- Various Intravenous injection training could be practiced through the veins attached to this simulator, including cephalic vein, basilic vein, median cubital vein, median antebrachial vein, and dorsal venous rete of hand.
- Intramuscular and Hyperdermic Injection Trainings could be practiced in the deltoid area.
- The sleeve in upper arm provides various injection positions for practice.
- Skin and Veins have spare parts for replacement after plenty of times practice.

• Rs. 45,500.00

Clearly labeled anatomical features that eliminate confusion.

GD/HS39 Full-functional Vein Injection Arm

Complete Venipuncture Arm:

- Venous access: Basilic V Cephalic V Digital V Dorsal Metacarpal V Median Basilic V Accessory Cephalic V Extensive venipuncture system Median Antebrachial V Median Cephalic V Median Cubital V Thumb V
- This revolutionary training arm provides complete venous access for IV therapy and phlebotomy, plus sites for intramuscular and intradermal injections. An extensive 8-line vascular system allows students to practice venipuncture at all primary and secondary locations, including starting IVS and introducing OVER the Needle IV Catheters. The venous system simplifies setup with only one external fluid bag supplying artificial blood to all veins simultaneously. The dorsal surface of the hand includes injectable metacarpal, digital and thumb veins. The antecubital fossa includes the median cephalic, median basilic and median cubital veins. Venipuncture can also be performed along the basilica, cephalic, accessory cephalic and median antebrachial veins. Intramuscular injection may be performed in the deltoid muscle and intradermal injection sites are located in the upper arm. Intramuscular injections into the deltoid muscle are enhanced by the soft, lifelike skin and by the natural bony landmarks in the region. Intradermal injections using distilled water will create characteristic skin welsat designated sites on the upper arm.
- The realism of the Advanced Venipuncture and Injection Arm is truly amazing. The soft, flexible fingers are molded separately with extreme attention paid to every detail-right down to the fingerprints! Flexion of the wrist helps students to develop manipulate skills. The replaceable skin rolls as the veins are palpated and a discernable "pop" is felt when entering the veins. The molding process reproduces the fine details of the skin to make the arm look and feel alive. Valves in the veins can be seen and palpated on the skin surface.
- Simulated veins and skins are completely replaceable to keep this training arm looking and working like new. Under normal use, hundreds of injections may be performed before the veins or skins need to be replaced. Complete replacement kits are available and easy to use. To extend the life of the veins and aerosol sealant is available to seal punctures and prevent leakage.



• Price Rs. 56000.00

GD/HS2 Multi Functional I.V. Training Arm



- This adult vein puncture and Injection Training Arm has all the 8 vena of the vascular system of the arm, it helps to provide a good training of injection, infusion and phlebotomization.
- This model can provide a real life like feel when the students practice on this model.

• Rs. 28800.00

GD/HS8 Child IV Training Arm

Features:

- Simulate the arm of child (4 years old)
- Lifelike arm reproduction with multi-vein system designed for peripheral intravenous therapy.

• Price Rs. 23300.00



GD/L63 Prostate Inspection Model



- This model provides prostates with tumors in 4 different development periods.
- The 1st development: Benign, a little big but the prostates still works well.
- The 2nd development: some hard tubers can be observed in the top right quadrant of prostate. It's the beginning of the tumors.
- The 3rd development: The tumor is proliferating, and the previous tubers become bumps.
- The 4th development: The prostates is all replaced by tumors, the surface become more rough harder than before.

• Rs. 80300.00

GD/L64 Peritoneal Dialysis Simulator

- This model is a specially designed simulator for the medical staff to practise the skill of peritoneal dialysis.
- Fistula orifice is in the realistic position, and the simulative lique flow out through it.
- Standard Equipment includes Catheter, Disposable Water-Proof Fabric, Infusion Stand, Liquid Bag, Deluxe Portable Box.



• Each Rs. 79200.00

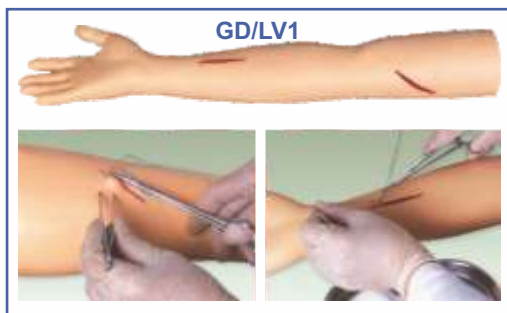
ZX-FA5050 Advanced Endotracheal Intubation Training Model

- The model consists a standard human head & neck with visual trachea, esophagus, lung and stomach.
- Combination of practical operation and audio-visual based on standard human anatomic structure.
- Incorrect intubation operation will cause tube inserted into esophagus which is observable and triggering alarm, the stomach will also be inflated.
- Incorrect intubation operation will also cause tooth pressed by the laryngoscope and trigger electronic alarm.

Functions :-

- Oral cavity intubation
- Nasal cavity intubation
- Fiber optic tube intubation
- Oral & nasal airtube intubation
- Sucking tube intubation
- Nasal, stomach feeding tube intubation
- Oxygen tube intubation

• Rs. 40,000.00



GD/LV1

Advanced Surgical Suture Arm

- Allows student to practice cut, suturing, stitches release, enswathing etc.
- The elasticity and flexibility of skin allows practice hundreds times.
- If all the initial wounds have been sutured, student can cut the arm in other place for new training of suturing.

• Rs. 21600.00



GD/LV2

GD/LV2 Advanced Surgical Suture Leg

- This model of Advance Suturing Leg allows student to practice cut, suturing, stitches release, enswathing, etc.
- The elasticity and flexibility of skin can make it for practice hundreds times.
- If all the initial wounds have been sutured, student can cut the leg in other place for new training of suturing.

• Rs. 28800.00



GD/J55

GD/J55

Airway Intubation Model

- Accurate anatomical marks
- Oral or nasal cavity intubation
- Wrong operation, stomach inflation or laryngoscope compressing the teeth will activate warning prompting.
- One proper pupil and another mydriasis

• Price Rs. 44500.00



GD/H17E

GD/H17E

Male Catheterization Training Simulator

Features

- General urethral Catheterization process can be operated.
- There is resistance when advancing the catheter through mucosal fold, bulb of urethra and intraurethral sphincter.

• Price Rs. 28200.00



GD/H17F

GD/H17F

Female Catheterization Training Simulator

Features

- General urethral Catheterization process can be operated.
- There is resistance when advancing the catheter through urethral sphincter.

• Price Rs. 28200.00



NEW

GD/H10C

GD/H10C

Adult Intramuscular injection Training Manikin

Features:

- Structure of left gluteal : osteal marks, gluteal muscles, ischiadic nerve and veins.
- Left gluteal can be taken off. So it is easy to observe internal structure and make sure position of ischiadic nerve and veins.
- Gluteal intramuscular injection training.

• Price Rs. 72600.00

ZX-NS6028 Buttock Inter Muscular Injection Training Model

- A well shaped buttocks of an adult, made of special material, correct anatomical landmarks.
- Both buttocks could practice intramuscular injection. The good material helps to make a real skin-touch feeling.
- A monitoring system is equipped to this model, the injection position and depth could be indicated by the indicator light in different color with sound alarm.
- Green light turns on to indicate the injection in correct position and correct depth.
- Red light turns on and a buzzing sound comes, indicating the injection position is wrong.
- Green light turns on, and red light gets in flashlight, buzzing sound comes together, indicating the injection position is correct, but the injection depth is too much.
- When injects in correct position, the injected liquid could flow out through the outlet in the upside of model, to the liquid-collect bag.
- A zipper is mounted in the abdominal, which helps to make an easy replacement of skin cover and the injection parts.



• Rs. 70,000.00



ZX-GP6621 Breast Inspection and Diagnosis Training Model

- Model is one side of female breast, life like, realistic texture.
- Contain breast cancer and fibroadenomas.

• Rs. 23,500.00



ZX-GP6620 Breast Inspection Model

- Breast model is implanted with innocent tumour and malignant tumor, allow to practice diagnosing according to the position, size, texture and movement.
- Model has realistic appearance and precise anatomical structure for inspection practice
- Model is natural life size.

• Rs. 50,000.00



GD/F7A Breast Examination Model

- Palpation of galactophore malignant tumor, Innocent tumor, lymphaden and lobulus accrementition.
- In imported thermoplastic.
- Lifelike shape, skinny, pleasant to touch, durable.
- Ametabolic under disinfections and cleanout, convenient delivery.

• Price Rs. 26000.00

GD/A16011 Lymphatic System

- Mounted on board.
- Shows the component & structure of the lymphatic system.
- Shows 63 positions.
- Made of advanced PVC.

• Rs. 23600.00



VT021 Frog Dissection Kit

- Authentically detailed frog body.
- Removable soft texture organs.
- Cross sections show muscle structure.
- Glow-In-Dark "X-RAY" included.
- Child safe lab tools included.

• Price Rs. 3950.00

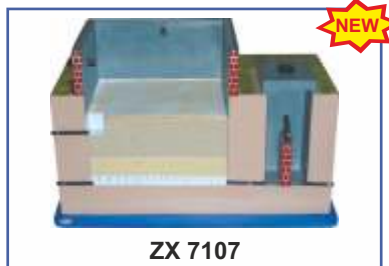
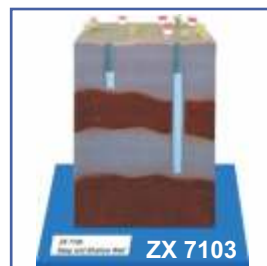
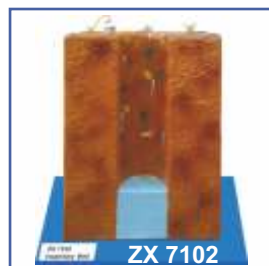
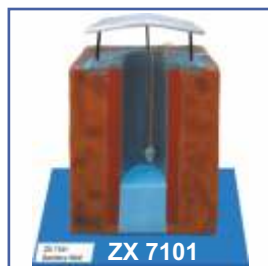
COMMUNITY HEALTH NURSING MODELS

- Made of high grade materials having long durability
- Mounted on sturdy wooden frame for easy display
- Supplied with well illustrated informative literature
- Well labeled parts
- Beautifully painted in bright colors
- Model is a great teaching tool for nursing students

COMMUNITY HYGIENE

ZX 7101 - Sanitary Well.....Price Rs. 5000.00
ZX 7102 - Insanitary Well.....Price Rs. 5000.00
ZX 7103 - Deep and Shallow Well.....Price Rs. 5000.00
ZX 7104 - Deep Tube WellPrice Rs. 6000.00

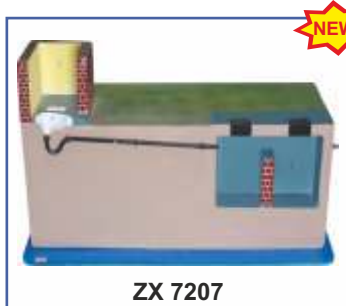
ZX 7105 - Step Well.....Price Rs. 5500.00
ZX 7106 - Berkefeld Filter.....Price Rs. 5000.00
ZX 7107 - Slow Sand Filter.....Price Rs. 6500.00
ZX 7108 - Rapid Sand FilterPrice Rs. 5500.00



ENVIRONMENTAL SANITATION

ZX 7201 - House Drainage SystemPrice Rs. 6500.00
ZX 7202 - Chamber Type Incinerator.....Price Rs. 6500.00
ZX 7203 - Activated Sludge ProcessPrice Rs. 6500.00
ZX 7204 - Bore Hole LatrinePrice Rs. 5000.00
ZX 7205 - Dug Well Latrine (Pit Latrine)Price Rs. 5000.00

ZX 7206 - Trench LatrinePrice Rs. 5500.00
ZX 7207 - Septic Tank Latrine.....Price Rs. 6000.00
ZX 7208 - Biogas Plant.....Price Rs. 6500.00
ZX 7209 - Smokeless ChulhaPrice Rs. 6000.00



COMMUNITY HEALTH BAG

CHB02 Community Health Bag



1. Spirit Lamp
2. Test Tube Holder
3. Test Tube 5"
4. Kidney Trays 6" Stainless Steel
5. Syringe 5ml
6. Stethoscope
7. Feotoscope
8. Suture Cutting Scissor
9. Dressing Scissor (Big) 6"
10. Forcep Toothed 6"
11. Forcep Non Toothed 5"
12. Artery Forcep (straight) 6.5"
13. Thermometer Clinical
14. Spring Balance
15. Towel
16. Measuring Tape
17. Soap Dish
18. Nail Brush
19. Dropper
20. Small Bowl

Rs. 2,700.00

CHB03 Midwifery Kit For Home Delivery

1. Face Mask
2. Surgical Spirit
3. Gloves
4. Rubber Mucus Sucker
5. Kidney Trays Medium 6" Stainless Steel
6. Kidney Trays Small
7. Bowls Medium
8. Bowls Small
9. Syringe 10ml
10. Syringe 5ml
11. Syringe 2ml
12. Hypodermic Needle Pkt.
13. Apron
14. Feotoscope
15. Artery Forcep Straight 6"
16. Artery Forcep Curve 6.5"
17. Thumb Forcep - Plain 5"
18. Thumb Forcep - Toothed 6"
19. Umbilical Cord Cutting Scissor
20. Umbilical Cord Tie
21. Enema Can With Tubing/Douch Set
22. Cotton
23. Mackintosh
24. Rubber Catheter
25. Spring Balance
26. Soap Dish
27. Towel
28. Measuring Tape

Rs. 3,200.00



BUILD YOUR ANATOMY MODELS

• New Type of Puzzle • Highly Detailed Finish • Collectible Quality • Dissectable in Small Parts • Display Stand •



SK007 Eyeball Anatomy Model

- Size 14 cm
- 35 pieces set.
- Price Rs. 1350.00



SK008 Human Body Anatomy Model

- Size 12.7 cm
- 32 pieces set.
- Price Rs. 1350.00



SK009 Heart Anatomy Model

- Size 14 cm
- 31 pieces set.
- Price Rs. 1350.00



SK010 Cranial Nerve Skull Anatomy Model

- Size 9 cm
- 39 pieces set.
- Price Rs. 1350.00

HISTOLOGY AND BIOMOLECULES MODELS

ZX-3101


ZX-3101 Animal Cell Model

- Made of high grade synthetic polymer having long durability
- Delivered with removable stand
- Size: 30x40x10 cm
- Well illustrated and informative
- 19 parts labeled in total
- Beautifully painted in bright colors

• Price Rs. 2050.00

DN001 DNA Model Kit

- Made of Plastic
 - Size:- 10×10×45 cm
- Price Rs. 1600.00

DN001



VISUAL TEACHING AIDS

OHP 250S KANSIL'S OVERHEAD PROJECTOR :

- Low voltage
- Latest Design
- Single Halogen lamp 24V-250W
- Rack & Pinion Focusing System
- Light weight
- Metal Body
- Motorised cooling System
- Intensity Control

• Rs. 7100.00 each

OHP 250T KANSIL'S OVERHEAD PROJECTOR :

- Low voltage
- Latest Design
- Single Halogen lamp 24V-250W
- Rack & Pinion Focusing System
- Equipped with dual bulb system
- Light weight
- Metal Body
- Motorised cooling System
- Intensity Control

• Rs. 7600.00 each

250T


SP-150 Slide Projector Manual :

- Versatile design
- Halogen Lamp 24V-150W
- Noiseless cooling system
- Slide carrier for 2 slides
- Rigid construction
- Height adjustable
- Manual Focusing

• Rs. 4000.00 each

SP-150



OPTIONAL ACCESSORIES

OA01 Projection Screen 70" × 52" (175 × 130 cms) with folding tripod stand.	Each Rs. 2650.00
OA02 -do- 60"×60" (150×150 cms)	- do - Each Rs. 2650.00
OA03 -do- 90"×72" (225×180 cms)	- do - Each Rs. 6500.00
OA04 Map Screen made of thick white rexine with roller 175 × 135 cms.	Each Rs. 1200.00
OA11 Overhead Projector marker set of 7 pens including Eraser Pen.	Per set Rs. 400.00
OA12 Blank Overhead Projector Transparencies - 210 × 297 mm. Packet of 100 sheets	Per Pkt Rs. 550.00
OA21 Bulb for OHP 24v-250W	Each Rs. 220.00
OA22 Bulb for Slide Projector 24V-150W	Each Rs. 220.00
OA31 Laser Pointer Pen Type with AAA size batteries.	Rs. 1050.00
OA32 Laser Pointer Pen type with button cells	Rs. 450.00

2"×2" COLOURED 35 mm SLIDES

HEALTH SECTION

Prevent the Diseases

each set contain 20 slides

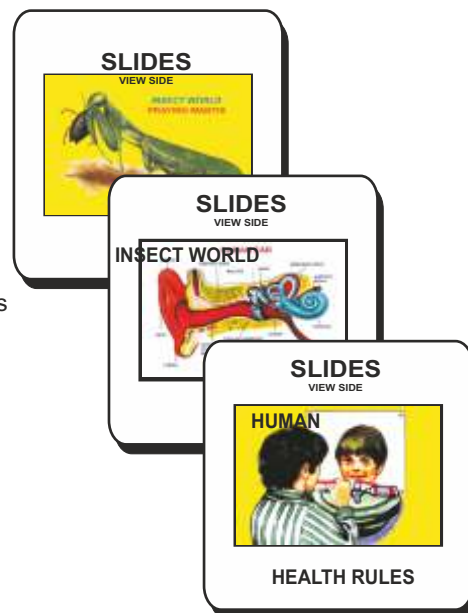
- SPD01 Cholera
- SPD02 Malaria
- SPD03 Aids
- SPD04 Plague
- SPD05 Tuberculosis
- SPD06 Leprosy
- SPD07 Influenza
- SPD08 Jaundice
- SPD09 Cancer
- SPD10 Typhoid
- SPD11 Viral Diseases
- SPD12 Chicken Pox
- SPD13 Dysentery
- SPD14 Hepatitis
- SPD15 Heart Attack
- SPD16 Diabetes
- SPD17 Asthma
- SPD18 Arthritis
- SPD19 Thyroid
- SPD20 Blood Pressure

Health Care each set contain 20 slides

- SHC01 Health Rules
- SHC02 Causes of Diseases
- SHC03 Prevention of Diseases
- SHC04 Effects of Alcohol
- SHC05 Tobacco & Habit Forming Drugs
- SHC06 Clean Body
- SHC07 Clean Water
- SHC08 Constituents of Food
- SHC09 Malnutrition
- SHC10 Immunization

Others

- SH01 Human Physiology set of 50
 - SH03 Yogan set of 20
 - SH04 Vitamin set of 10
 - SH06 Human Body set of 10
 - SH07 First Aid set of 50
 - SH09 Mothercraft set of 30
 - SH11 Child Welfare set of 20
 - SH12 Family Planning set of 100
- Price per Slide Rs. 12.00



BIO VIEWERS

BV01 Slidoscope for Viewing Slide in available light

Rs. 450.00

Biostrips are available on various subjects. Biostrips can be prepared on any subject (Min. quantity should be 50 each)

NURSING SLIDES SETS

- | | |
|---|------------|
| SNM01 Basic Nursing Skills | Set of 40 |
| SNM02 Burns & Nursing | Set of 40 |
| SNM03 Fundamentals Of Nursing | Set of 60 |
| SNM04 History Of Nursing | Set of 20 |
| SNM05 Infant Nursing | Set of 40 |
| SNM06 Medical Surgical Nursing | Set of 20 |
| SNM07 Maternity Nursing | Set of 20 |
| SNM08 Nursing Responsibilities & Implications | Set of 100 |
| SNM09 Oncologic Nursing | Set of 40 |
| SNM10 Pediatric Nursing | Set of 40 |
| SNM11 Emergency Delivery | Set of 20 |
- Price per Slide Rs. 13.00



BOTANY SECTION

- | | | |
|---|---|--|
| SB01 Algae Fungi set of 20 | SB11 Inflorescence set of 10 | SB20 Plant Kingdom set of 30 |
| SB02 Angiospermic Families set of 15 | SB12 Insectivorous & Parasitic Plants set of 20 | SB21 Plant Physiology set of 30 |
| SB03 Bacteria set of 20 | SB13 L.H. Mucar set of 15 | SB22 Pollination set of 10 |
| SB04 Bryophyta & Pteridophyta set of 20 | SB14 Leaves set of 20 | SB23 Roots set of 20 |
| SB05 Cell Structure set of 20 | SB15 Marchantia set of 15 | SB24 Spyrogyra set of 20 |
| SB06 Dispersal of Seeds set of 20 | SB16 Meiosis set of 15 | SB25 Stems set of 20 |
| SB07 Fern set of 10 | SB17 Mitosis set of 10 | SB26 Vegetative Reproduction set of 20 |
| SB08 Fruits set of 20 | SB18 Plant Anatomy set of 20 | SB27 Water Plants set of 10 |
| SB09 Germination of Seeds set of 20 | SB19 Plant Histology set of 30 | |
| SB10 Higher Plants set of 20 | | |
- Price per Slide Rs. 12.00

ZOOLOGY SECTION

SZ01	Anatomy of Frog set of 30	SZ12	Frog Embryology set of 15	SZ23	L.H. Silkworm set of 10
SZ02	Anatomy of Rabbit set of 20	SZ13	Rabbit Embryology set of 20	SZ24	Liverfluke & Tapeworm set of 20
SZ03	Amoeba & Paramecium set of 20	SZ14	Evidence of Evolution set of 20	SZ25	Mammals set of 30
SZ04	Animal Histology set of 30	SZ15	Fishes set of 30	SZ26	Meiosis set of 15
SZ05	Animal Kingdom set of 30	SZ16	Hydra & Obelia set of 20	SZ27	Mendel Heredity set of 20
SZ06	Animal World set of 40	SZ17	Harmful Insects set of 20	SZ28	Mitosis set of 10
SZ07	Beaks & Feet of Birds set of 20	SZ18	Useful Insects set of 20	SZ29	Prehistoric Animals set of 20
SZ08	Birds set of 30	SZ19	L.H. Butterfly set of 10	SZ30	Protozoa set of 10
SZ09	Cockroach set of 20	SZ20	L.H. Honey Bee set of 10	SZ31	Reptiles & Amphibians set of 40
SZ10	Earthworm set of 20	SZ21	L.H. Housefly set of 10	SZ32	Snakes set of 20
SZ11	Chick Embryology set of 20	SZ22	L.H. Mosquito set of 10		

Price per Slide Rs. 12.00

SPECIAL SLIDES (available in Album Only)

SSS01	Biology Album for 10+1 set of 100	Rs. 1400.00	SSS05	Pathology set of 100	Rs. 1900.00
SSS02	Biology Album for 10+2 set of 100	Rs. 1400.00	SSS06	Chemistry Album for 10+2 set of 100	Rs. 1400.00
SSS03	Medicinal Plants set of 100	Rs. 1900.00	SSS07	Physics Album for 10+2 set of 100	Rs. 1400.00
SSS04	Histology set of 100	Rs. 1900.00	SSS09	Human Physiology set of 100	Rs. 1900.00

OVERHEAD PROJECTOR TRANSPARENCIES

OT04	Chick Embryology set of 20	OT11	Sense organs set of 20
OT05	Frog Development set of 15	OT13	First Aid set of 50
OT10	Human Physiology set of 50		Price per transparency Rs. 40.00



INDIAN SCHOOL SYLLABUS ON VIDEO

From Hazel Dolbrien of the U.K. Any one CD Rs. 300.00

Code	Title	Time (in mins.)	Code	Title	Time (in mins.)
E01	Sleepy Heads, Amoeba, Protista.	41	E13	Liver, Digestive System Part-I & II, Lymphatic System.	54
E02	How Insects Develop Part -I & II, Life of the Forest.	49	E14	Tissue Respiration, How Plants Move, Coral Reef Community.	51
E03	What are Cells, Role of the Cell Membrane, Peripheral Nervous System.	57	E43	Growing Plants, Fungi & man, Fungi.	47
E04	The Woods, Woodlands: Plant Movements, What is Autumn, What is Spring.	52	E48	Insects, Roots & Plants that help us.	44
E05	About Your Body, Tissues of the Human Body, Body Fights Diseases.	43	E49	Genetic Investigation, Genetics & Plant Breeding, Pattern Developments.	43
E06	How Seeds are Scattered, Dispersal of Seeds and Fruits, How Seeds Grow.	52	E50	Autumn Brings Changes, Spring Brings Changes, Flying Birds.	44
E07	Life Cycle of Insects Part -I & Part - II, life story of the Earthworm, food feeding habits.	47	E51	Parasites, Microbiology: Microbes & their Control, Diffusion & Osmosis, Structure of Protein.	54
			E52	Autonomic Nervous System & Drugs.	35
			E53	Life Cycle of a Frog, Skeleton, Skin as a Sense Organ, Egg & Sperm.	50
			E54	Sense Perception Part-I & Part-II	55
E08	Process of Pollination, Germination & Growth of plants, Life Cycle of Flowering Plants, Animals Breathe in many ways.	54			
E09	Meiosis, Mitosis, Circulatory System.	51	E55	Introduction to Dissection, Work of Kidneys	42
E10	Temperature Regulation, Chemistry of The Cell Part - I & Part II.	52	E103	Human Brain Part-I: The Self	50
E11	Effect of Light on Oxygen Production, effect of Chlorophyll & Carbon Dioxide on Oxygen production & Starch Formation, Plants Make Food, Photosynthesis.	56	E104	Human Brain Part-II: Language	50
E12	Circulation of the Heart, Respiratory, Reproductive & Nervous System.	50	E105	Human Brain Part-III: Fear	50
			E106	Human Brain Part-IV: Memory	50
			E107	Human Brain Part-V: Seeing	50
			E108	Human Brain Part-VI: Madness	50



BIOLOGY MODELS

BOTANY MODELS

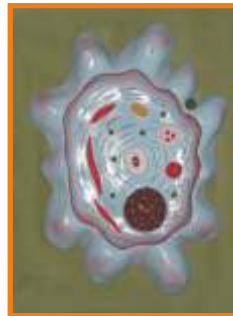
Made of Fiber Glass on MDF Board. Each Model size 60 x 45 cm Price Rs. 1000.00 each

BMB01	Plant Cell	BMB11	T.S. Dicot Stem
BMB02	Germination of Seed	BMB12	T.S. Monocot Leaf
BMB03	Fertilization & Angiosperms	BMB13	T.S. Dicot Leaf
BMB04	Plant Cell Meiosis	BMB14	Root Tip
BMB05	Plant Cell Mitosis	BMB15	Life Cycle : Moss
BMB06	L.S. Flower	BMB16	Life Cycle : Fern
BMB07	L.S. Ovary	BMB17	Life Cycle : Fungus
BMB08	T.S. Monocot Root	BMB18	Spirogyra
BMB09	T.S. Dicot Root	BMB19	Pitcher Plant
BMB10	T.S. Monocot Stem	BMB20	Funaria Plant



ZOOLOGY MODELS

Made of Fiber Glass on MDF Board.
Each Model size 60 x 45 cm Price Rs. 1000.00 each



BMZ01	Animal Cell	BMZ11	Frog Dissection
BMZ02	Animal Cell Meiosis	BMZ12	Rat Dissection
BMZ03	Animal Cell Mitosis	BMZ13	Fish Dissection
BMZ04	Amoeba	BMZ14	Rabbit Dissection
BMZ05	Paramecium	BMZ15	Development of Frog
BMZ06	Hydra	BMZ16	Life History of Silk Worm
BMZ07	Euglena	BMZ17	Life History of Mosquito
BMZ08	Malarial Parasite	BMZ18	Life History of Honey Bee
BMZ09	Bacteria	BMZ19	Life History of Butterfly
BMZ10	Virus	BMZ20	Life Cycle of Tapeworm

MODELS OF FLOWERS

Made of Fiber Glass on stand.
Price Rs. 850.00 each.

BMF01	Typical Flower
BMF02	Liliaceae Flower
BMF03	Rosaceae Flower



HUMAN ANATOMY 3-D PLASTIC MODELS

Deluxe quality, made of fiber glass, mounted on wooden board
Size 30 x 50 cm Each Rs. 400.00

HA01D	Teeth	HA11D	Spinal Cord	HA21D	Reproductive Organs (Female)
HA02D	Circulatory System	HA12D	Stomach	HA22D	Reproductive Organs (Male)
HA03D	Digestive System	HA13D	Liver	HA23D	Lungs
HA04D	Respiratory System	HA14D	Kidney	HA24D	Skull
HA05D	Nervous System	HA15D	Brain	HA25D	Excretory System
HA06D	Skeleton	HA16D	Heart	HA26D	Endocrine System Male
HA07D	Head & Neck	HA17D	Eye	HA27D	Endocrine System Female
HA08D	Skin	HA18D	Ear	HA28D	Muscular System Front View
HA09D	Mouth	HA19D	Male Pelvis	HA29D	Muscular System Back View
HA10D	Tongue	HA20D	Female Pelvis	HA30D	Nose



SPECIAL MODELS ON HUMAN ANATOMY

- HA101A HUMAN BODY TORSO**- Torso with head with detachable internal structure of Head and neck, Organs of Thorax and abdomen cavities of the viscera can be emptied, for study of blood vessels. Dissectable in 12 parts made of Fibre Glass painted in natural colours. Made of Fiber Glass. Magnetic. Life Size Rs. 6000.00
- HA101 HUMAN BODY** - Torso with head with detachable internal structure of Head and neck, Organs of Thorax and abdomen cavities of the viscera can be emptied, for study of blood vessels. Dissectable in 12 parts made of Fibre Glass painted in natural colours. Life Size Rs. 3800.00
- HA102 Human Body** - Torso Small size Rs. 1200.00
- HA103 HUMAN SKELETON** - Life size made of fibre glass. All the bones shoulder & hip joints clearly depictable Rs. 2640.00
- HA103S Stand for above** Each Rs. 1200.00
- HA104 HUMAN SKELETON** - Plastic size 70 cm with stand. Rs. 600.00
- HA105 HUMAN SKELETON** - Plastic size 40 cm with stand. Each Rs. 130.00
- HA106 Dummy with Doll** made of Fibre Glass Each Rs. 3500.00
- HA107 Female Pelvis** with child Each Rs. 1100.00
- HA108 Female Pelvis** with reproductive organs Each Rs. 1100.00
- HA109 Delivery Process Models** set of 8 Set Rs. 6800.00
- HA110 Development of Fetus/Embryo** set of 9 Set Rs. 3200.00
- HA110L Development of Fetus/Embryo** set of 9 Large size Rs. 7000.00
- HA111F Full Size Human Female Body Fibre Glass**
Showing organs & muscles Each Rs. 30000.00
- HA111M Full Size Human Male Body Fibre Glass**
Showing organs & muscles Each Rs. 30000.00
- HA112 RNA** 60 x 45 cm Each Rs. 1000.00
- HA113 DNA** 60 x 45 cm Each Rs. 1000.00
- HA116 Human Placenta Model made of Fiber Glass**
Dissectable Models (Fibre Glass) Each Rs. 1300.00
- HA126** Eye Ball Each Rs. 260.00
- HA127** Human Heart Each Rs. 260.00
- HA128** Human Ear Each Rs. 260.00
- HA129** Human Brain Each Rs. 260.00
- HA130** Human Kidney Each Rs. 260.00
- Fibre Glass Models** (Wooden Base) size 81 x 31 cm
- HA151** Human Digestive System Each Rs. 1000.00
- HA152** Human Blood Circulatory Each Rs. 1000.00
- HA153** Human Nervous System Each Rs. 1000.00
- HA154** Human Reproductive Male Each Rs. 1000.00
- HA155** Human Reproductive Female Each Rs. 1000.00
- HA156** Human Excretory System Each Rs. 1000.00
- HA157** Human Respiratory System Each Rs. 1000.00
- HA201** Nursing Manikin Female Made of Fibre Glass Life Size Each Rs. 17500.00
- HA202** Nursing Manikin Male Made of Fibre Glass Life Size Each Rs. 17500.00



DETAILED HUMAN PHYSIOLOGY CHARTS

Printed in original colours. Everything requisite for thorough understanding of Human Physiology in its broad out line included. Each size 70 × 100 cm.

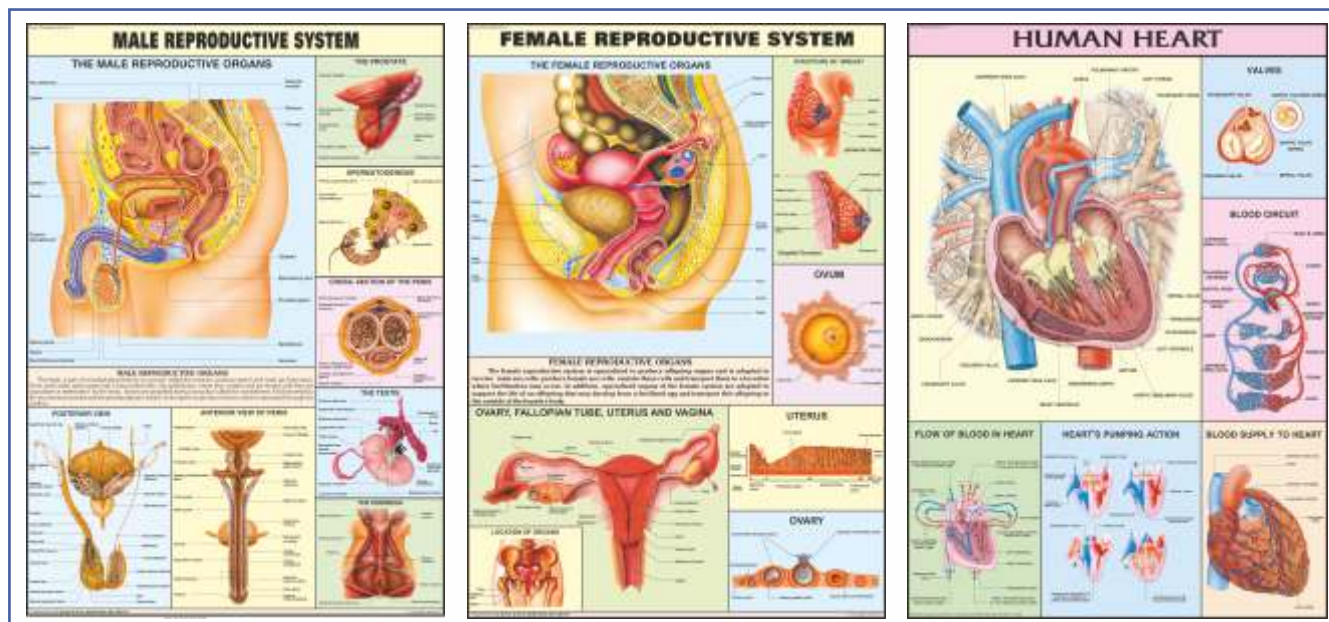
(English Only)

The Skeleton	HP01S
Human Muscles	HP02S
Blood Circulation	HP03S
Nervous System	HP04S
Digestive System	HP05S
Human Eye	HP06S
Human Ear	HP07S
Kidney, Skin & Excretory Organs	HP08S
The Respiratory System	HP09S
Human Heart	HP10S
Endocrine System	HP11S
Male Reproductive System	HP12S
Female Reproductive System	HP13S
Human Embryology	HP14S
Lymphatic System	HP15S



Rigid lamination on Board with Aluminium frame
Printed on synthetic paper and fitted with plastic rollers

Rs.1650.00 each
Rs. 180.00 each

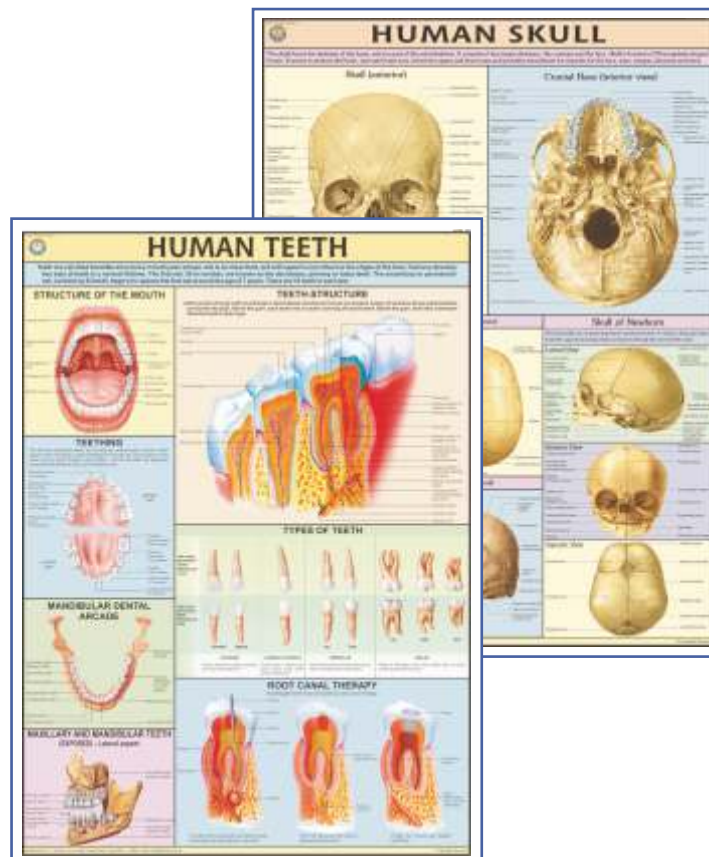


DETAILED HUMAN PHYSIOLOGY CHARTS

Printed in original colours. Everything requisite for thorough understanding of Human Physiology in its broad outline included. Each size 70 × 100 cm.

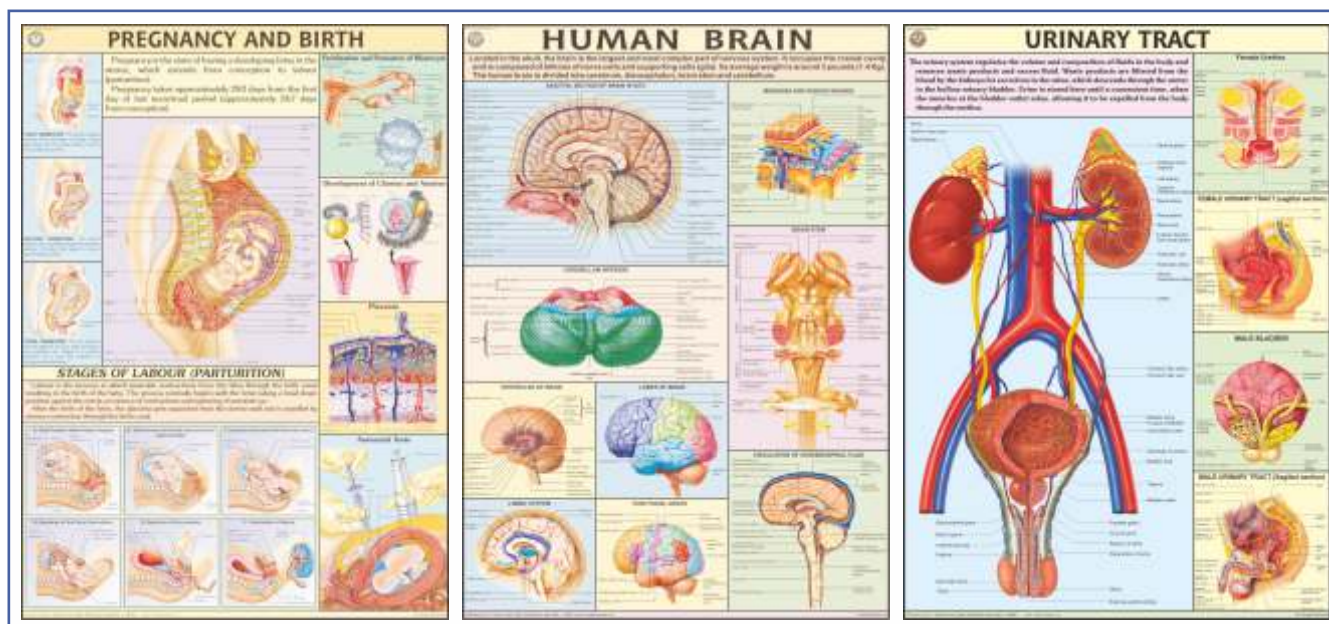
(English Only)

Human Brain	HP16S
Human Teeth	HP17S
Pregnancy & Birth	HP18S
Human Kidney	HP19S
Urinary Tract	HP20S
Human Skull	HP21S
Ear, Nose, Throat	HP22S
Liver, Gallbladder & Pancreas	HP23S
Human Lungs	HP24S
Joints of Human Body	HP25S
Immune System	HP26S
Human Skin	HP27S
Movable Joints	HP28S
Human Spinal Cord	HP29S
Menstrual Cycle	HP30S
Contraception	HP31S



Rigid lamination on Board with Aluminium Frame
Printed on synthetic paper and fitted with plastic roller

Rs.1650.00 each
Rs. 180.00 each



YOGASAN CHARTS

Each Chart size 50 x 75 cm. Hindi & English combined Rigid Chemical Lamination
on board with aluminium frame Each Rs. 800.00
Flexible Lamination with rollers Each Rs. 72.00



A faithful study and following the instructions as laid down in these charts, a vast treasure of **super powers** can be explored and developed within ourselves. For all round Physical, Mental, Emotional, Intellectual & Spiritual development of mind and body.

- YO01 Shuddhi Kriyas-Shat Karmas:** Kunjal-Vaman Dhauti, Kapal Bhati, Ghriti Neti, Sutra Neti, Jal Neti, Vastra Neti, Dand Dhauti, Nauli Karma, Tratak, Basti etc.
- YO02 Shankh Prakhalan:** Kagasan, Tadasan, Triyak Tadasan, Triyak Bhujangasan, Kati Chakrasan, Udarakarashanasan, Shavasana.
- YO03 Surya Namaskar:** A series of twelve steps, a complete exercise of all the parts of body. It makes the body strong, beautiful & active.
- YO04 Yog Mudras, Padmasan & Matsyasan:** These remove Spinal & Cervical pain, Asthma, Diabetes, Mental weakness, Constipation, Gastric troubles, Knee pain, Eye Defects.
- YO05 Paschimottanasan & Ardh Matsyendrasan:** Spine becomes Flexible and Elastic, the Abdominal organs-the Digestive system, Nervous system are toned up.
- YO06 Vajrasan, Ustrasan & Supt Vajrasan:** These remove cervical and slipdisc defects diseases of chest, lungs, heart, abdomen, kidney etc. , excess fatness of Abdomen and back
- YO07 Bhujangasan, Shalbhasan, Dhanurasan & Mayurasan:** Abdominal Organs are toned up. Spine is strengthened. Remove Gastic Intestinal disorders etc. Mental Powers are developed.
- YO08 Pawan Muktasan & Chakrasan:** Keep Spine Young & Flexible. Improve Eye sight, Hearing, Smell Taste & Circulation of Blood to the brain.
- YO09 Sarvangasan & Halasan:** Reduce fat, make arms, legs, Blood circulation, Digestive system, Liver strong and maintains youthful look etc.
- YO10 Bandhas & Pranayams:** Mool Bandh, Jalandhar Bandh, Uddiyan Bandh, Mahabandh. Pranayam Mudra, Lom-vilom Pranayam, Nadishodhan Pranayam, Agnisar Kriya.
- YO11 Spine & Related Organs:** Composition of spine, Positions of Psychic centres and Endocrine Glands are shown.
- YO12 Healthy Eye :** Eye washing, tratak on rising sun, Eye exercises, Palming.

HEALTH, HYGIENE & SANITATION

On a persistent demand from various Educational Institutions, NGO's, Rural Development Offices, Nursing Institutions we have recently published naturally coloured, useful and authentic charts incorporating all the modern researches and innovations on the subject.

PREVENT THE DISEASES containing 20 Charts

Hindi & English Combined
Each chart depicts the Causes, Symptoms,
Treatments, care to be taken.

PD01 * Cholera	PD11 Viral Diseases
PD02 * Malaria	PD12 Chicken Pox
PD03 * AIDS	PD13 * Dysentery
PD04 Plague	PD14 Hepatitis
PD05 Tuberculosis	PD15 Heart Attack
PD06 Leprosy	PD16 Diabetes
PD07 Influenza	PD17 Asthma
PD08 Jaundice	PD18 Arthritis
PD09 Cancer	PD19 Thyroid
PD10 * Typhoid	PD20 Blood Pressure

Each size 50 x 75 cm Rigid chemical lamination on Board
with Aluminium Frame Each Rs. 800.00
Flexible Lamination with rollers Each Rs. 72.00

* Also Available In

English - Kannada

English - Malayalam

English - Tamil

English - Telugu



HEALTH, HYGIENE & SANITATION

On a persistent demand from various Educational Institutions, NGO's, Rural Development Offices, Nursing Institutions we have recently published naturally coloured, useful and authentic charts incorporating all the modern researches and innovations on the subject.

HEALTH CARE SERIES containing 10 Charts

English & Hindi combined

- HC01 * Health Rules
- HC02 * Causes of Diseases
- HC03 * Prevention of Diseases
- HC04 * Effects of Alcohol
- HC05 * Tobacco & Habit Forming Drugs
- HC06 * Clean Body
- HC07 * Clean Water
- HC08 * Constituents of Food
- HC09 * Malnutrition
- HC10 Immunization

Each Size 50 x 75 cm

Rigid chemical lamination on Board with
Aluminium Frame Each Rs. 800.00
Flexible Lamination with rollers Each Rs. 72.00

* Also Available In

English - Kannada
English - Malayalam

English - Tamil
English - Telugu



CHARTS ON AIDS

Size 70 x 100 cm

AS01S. HIV: showing structure and mechanism of infection of Human Immunodeficiency Virus

AS02S. Transmission of HIV: explaining different ways which can spread the HIV infection and cause AIDS.

AS03S. Prevention: showing various measures which, when adopted, prevent transmission of HIV infection.

AS04S. How AIDS is not transmitted: showing various routine tasks which are not involved in transmission of HIV.

AS05S. Progress of Infection: showing how HIV infection typically progresses through various stages.

AS06S. Opportunistic Diseases: depicting complications which an AIDS patient develops that otherwise wouldn't normally occur in a person with a healthy immune system.

AS07S. Sexually Transmitted Diseases: showing various sexually transmitted diseases which increase the chances of acquiring HIV infection by an individual when exposed to the virus.

HP26S. Human Immune System: showing different organs involved in a healthy immune mechanism. As AIDS progressively weakens the immune system, chart gives an outline of functions of Immune System to better understand what AIDS can do.

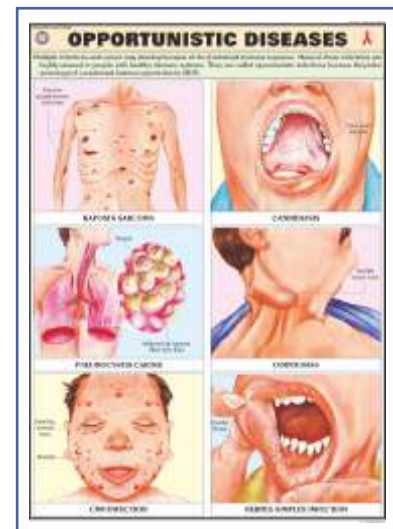
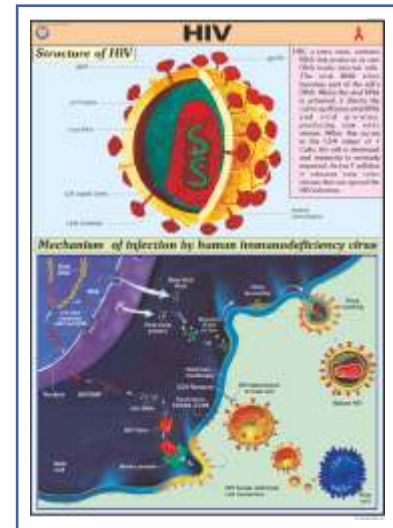
Rigid chemical lamination on Board with

Aluminium Frame

Rs. 1650.00 each

Printed on Polyart synthetic paper

Rs. 180.00 each



FIRST AID CHARTS



Each Chart size 50 X 75 cm

English or English & Hindi combined Rigid Chemical Lamination
on board with aluminium frame Rs. 800.00 each
Flexible Lamination with rollers Each Rs. 72.00

- FA01 Skeleton & Circulatory System:** Gives the basic knowledge of human body.
- FA02 Triangular Bandages:** Slings, knots and bandages for various parts of body.
- FA03 Roller Bandages:** A protective covering for wound or fracture, various methods of bandaging.
- FA04 Fractures:** Showing simple and compound fractures, treatment of fracture in various parts of body.
- FA05 Artificial Respiration:** Showing Schafer's method, Silvestor's method & Holger Nielsen's method of artificial respiration. Outline of Respiratory system and what is suffocation.
- FA06 Transport of the injured:** How to carry an injured person so that minimum movement of the injured portion is assured.
- FA07 Unconsciousness:** Sun Stroke, fainting, epileptic fit, Hysteria, Infantile convulsions, drowning.
- FA08 Haemorrhage:** Location of main arteries in the body and pressure points where when pressed, bleeding can be controlled.
- FA09 Electric Shock Treatment:** How to remove live wires, treatment & whom to contact.
- FA10 Emergency Resuscitation:** Mouth to mouth and Mouth to nose method. How to give external cardiac chest compression.
- FA11 Removal of foreign bodies from eye, ear, nose:** Various precautionary methods to remove the foreign bodies and to ensure safety of organs.
- FA12 Burns & Scalds:** Type of burns, treatment of chemical burns, clothing on fire.
- FA13 Snakes & Their Bites:** Type of snakes, Identification of snakes on the basis of appearance, treatment of snake bite.
- FA14 Poisons and their Antidotes:** Various type of poisons, their symptoms & their treatment.
- FA15 Outline of First Aid & Appliances:** What is First Aid, Qualities of a First Aider and essential appliances to give first aid.

All the above Charts are available in English & Hindi combined also.

GENETICS & EVOLUTION CHARTS

Size 70 x 100 cm

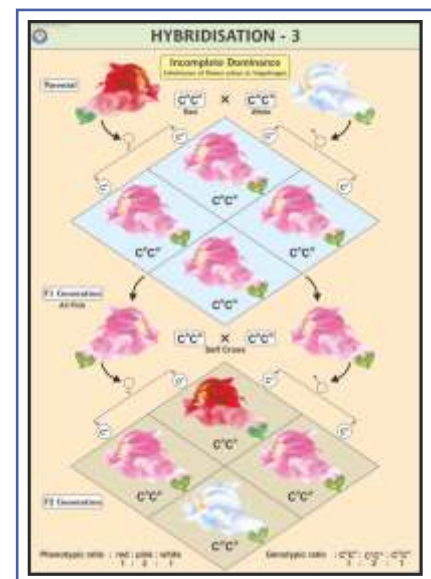
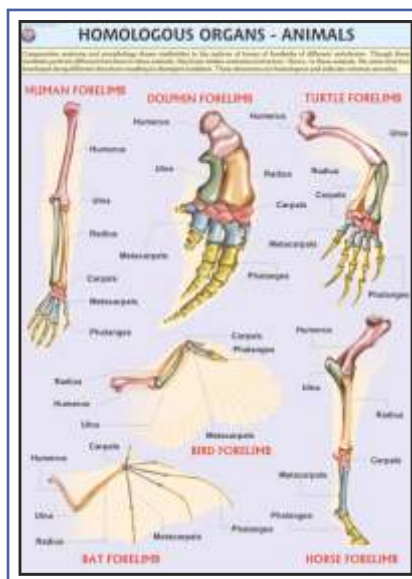
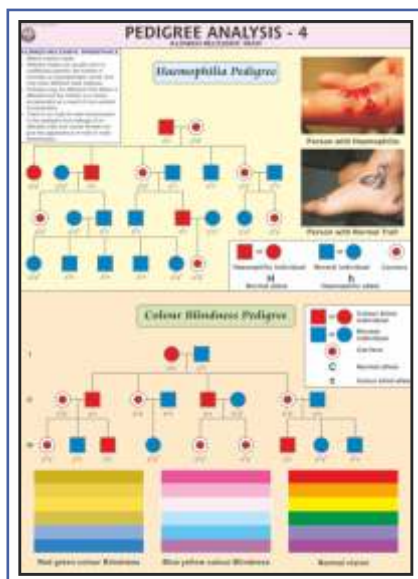
Rigid Chemical Lamination on Board with Aluminium Frame.

Rs. 1650.00 Each

Printed on Polyart Synthetic Paper, with rollers.

Rs. 180.00 Each

- GE01S. Pedigree Analysis - 1:** showing standard symbols used in Pedigree Analysis and Sample Pedigree.
- GE02S. Pedigree Analysis - 2:** showing Autosomal Dominant Trait Pedigree such as Myotonic Dystrophy and Tongue Curler Pedigree.
- GE03S. Pedigree Analysis - 3:** showing Autosomal Recessive Trait Pedigree such as Inheritance of Attached Ear Lobe and Inheritance of Sickle Cell Anaemia.
- GE04S. Pedigree Analysis - 4:** showing X-linked Recessive Trait Pedigree such as Haemophilia and Colour Blindness Pedigree.
- GE05S. Pedigree Analysis - 5:** showing X-linked Dominant Trait Pedigree such as Hypophosphatemia and Droopy Eyelids Pedigree.
- GE06S. Pedigree Analysis - 6:** showing Y-linked Trait - Hairy Ear and Mitochondrial Inheritance Pedigree.
- GE07S. Homologous Organs - Animals:** showing Forelimbs of Bat, Turtle, Horse, Human, Bird and Dolphin demonstrating Homology.
- GE08S. Analogous Organs - Animals:** showing Wings of Bird, Butterfly, Pterosaur and Bat demonstrating Analogy.
- GE09S. Homologous Organs - Plants:** showing thorn of Bougainvillea, tendrils of Cucurbita, fleshy cylindrical stem of Euphorbia, fleshy flattened stem of Opuntia, leafy shoots of Chrysanthemum and pineapple representing Plant Homology.
- GE10S. Analogous Organs - Plants:** showing thorn of Pyracantha, spine of Berberis vulgaris, prickles of Prosopis grandulosa and stipular spines of Black Locust representing Plant Analogy.
- GE11S. Hybridisation - 1 (Monohybrid Cross):** Cross between Purple coloured and White coloured flower Pea Plant demonstrating inheritance of one dominant character and expression of recessive parental trait without blending in F₂ generation.
- GE12S. Hybridisation - 2 (Dihybrid Cross):** Cross between Pea Plants differing in two traits (pod colour & plant height) showing segregation of one pair of character is independent of the other pair of characters.
- GE13S. Hybridisation - 3 (Incomplete Dominance):** Cross between true breeding Red and White Snapdragon flower plants showing one character is not completely dominant over other.



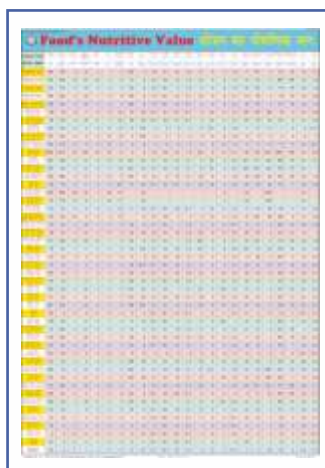
Enlarged views of key organs and structures.

CHARTS ON FOOD AND NUTRITION

Size 70 x 100 cm. English & Hindi combined.

Printed on offset paper, in full colour, using latest technology,
Rigid Chemical lamination on Board with Aluminium Frame. Price Rs. 1500.00 each
Flexible Lamination with rollers Rs. 130.00 each

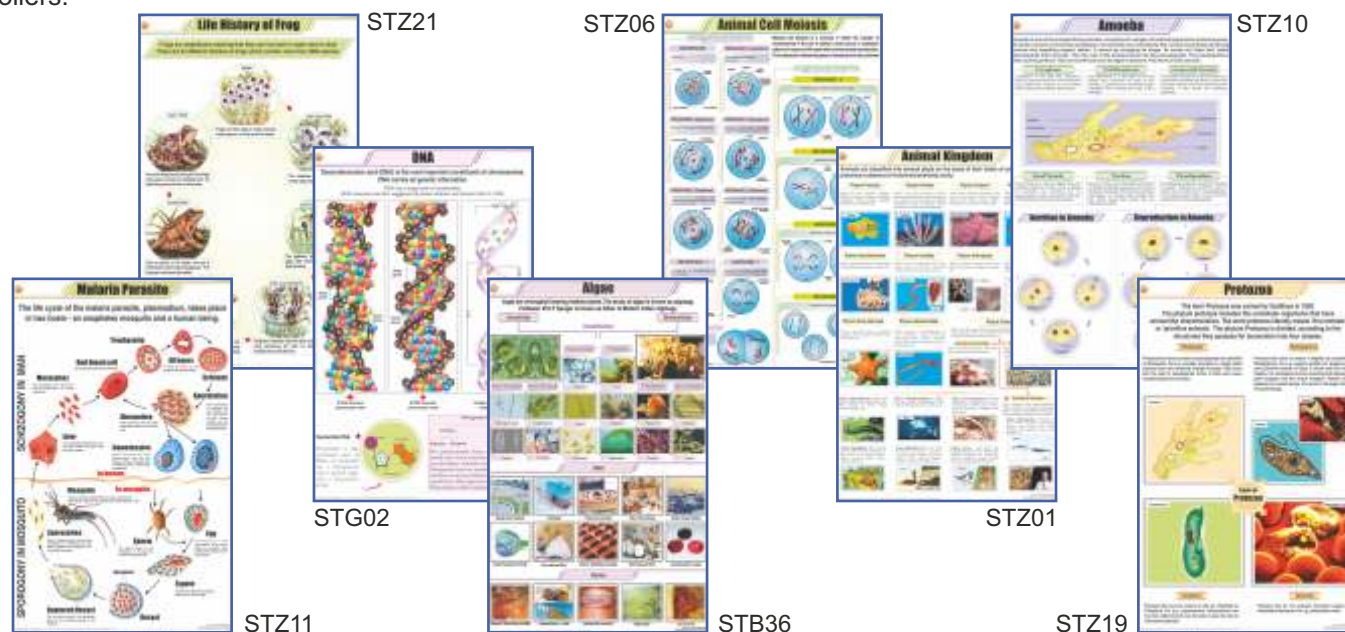
- FN01 **OUR FOOD** : Chart shows various components and functions of food. It also illustrates food pyramid mentioning balance diet and daily requirement of nutrients by different age groups.
- FN02 **PROTEINS** : Chart shows both animal and plant sources of protein. It also explains various functions performed by proteins in our body and some special conditions of high protein needs.
- FN03 **FATS** : Chart shows a brief classification of fats with a mention of essential fatty acids. It also shows some of the important functions and sources of fats.
- FN04 **CARBOHYDRATES** : Chart shows classification of carbohydrates as simple and complex with their various functions in the body. It also shows various foods rich in carbohydrates.
- FN05 **VITAMINS** : Good explanatory chart depicting both fat soluble and water soluble vitamins with their various sources and reasons of requirement in the body.
- FN06 **MINERALS** : Important minerals like Sodium, Iron, Calcium, Iodine etc. required in our body to live a healthy life are shown in the chart. Chart also shows various functions they perform and their sources.
- FN07 **WATER & ROUGHAGE** : Chart shows the importance of water and roughage and some major functions performed by them in the body. Chart also gives a good knowledge about their sources.
- FN08 **DEFICIENCY DISEASES** : Chart shows the havoc conditions arisen due to deficiency of various nutrients in the body and their symptoms. The understanding of chart will indicate the importance of good balanced diet.
- FN09 **OVERNUTRITION DISORDERS** : Chart shows that not only deficiency but also the over consumption of food is not good for health. Various overnutritional disorders with their causes and symptoms are depicted in the chart.
- FN10 **Food's Nutritive Value** : Chart shows the nutrient's composition of various common foodstuffs in a tabular form.



SCIENCE AND TECHNOLOGY CHARTS

size 58 × 90 cm (In English only) Laminated Rs. 150.00 each

The charts aim at familiarising students with the subject in a very realistic way and in social context. These delineate the process of life and of the technology that conditions our world today. The students will come to know the intricacies of the phenomenon and how it can be best used for the benefit of mankind. Using the latest printing technology the charts are printed on art paper in full colours and are duly laminated on both sides with thick plastic film and are fitted with plastic rollers.



STB01 Plant Kingdom
STB02 Typical Plant
STB03 Typical Plant Cell
STB04 Plant Cell Organelles
STB05 Plant Tissues
STB06 Plant Cell Mitosis
STB07 Plant Cell Meiosis
STB08 T.S. Stem - Monocot
STB09 T.S. Dicot Stem (Sunflower)
STB10 T.S. Root - Monocot
STB11 T.S. of Dicot Root
STB12 T.S. Leaf - Monocot
STB13 T.S. Leaf - Dicot
STB14 Types of Leaves
STB15 Root Systems
STB16 Structure of Flower
STB17 Calyx and Corolla
STB18 Inflorescences
STB19 Fruits
STB20 The Seed :
Structure & Germination
STB21 Germination of Seed :
Bean & Pea
STB22 Dispersal of Fruits & Seeds
STB23 Photosynthesis
STB24 Plant Diseases
STB25 Reproduction in Plants
STB26 Pollination
STB27 Double Fertilization
STB28 Artificial Vegetative Propagation
STB29 Stem Modifications
STB30 Root Modifications
STB31 Hydrophytes
STB32 Mesophytes

List of the Charts

STB33 Xerophytes
STB34 Insectivorous Plants
STB35 Fungi
STB36 Algae
STB37 Viruses
STB38 Bacteria
STB39 Life Cycle of Fern
STB40 Life Cycle of Moss
STB41 Spirogyra
STB42 Life Cycle of Mushroom
STB43 Leaf Modification
STB44 Parasitic Plants
STB45 Mucor : Structure & Reproduction
STB46 Regions of Root
STZ01 Animal Kingdom
STZ02 Animal Cell
STZ03 Animal Cell Organelles
STZ04 Animal Tissues
STZ05 Animal Cell Mitosis
STZ06 Animal Cell Meiosis
STZ07 Gametogenesis in Animals
STZ08 Fertilization in Animals
STZ09 Protozoa
STZ10 Amoeba
STZ11 Malaria Parasite
STZ12 Paramoecium
STZ13 Hydra
STZ14 Liver Fluke
STZ15 Tapeworm
STZ16 Roundworm (Ascaris)
STZ17 Hookworm
STZ18 Life History of Mosquito

STZ19 Life Cycle of Butterfly
STZ20 Life History of Housefly
STZ21 Life History of Frog
STZ22 Human Blood
STZ23 Body's Defense
STZ24 Harmful Insects
STZ25 Beneficial Insects
STZ26 Food Habits of Birds
STZ27 Fish Anatomy
STZ28 Birth of a Bird's Chick
STZ29 Earthworm I :
Ext. Morphology & Reproduction
STZ30 Earthworm II : Blood Circulation,
Respiratory & Nervous System
STZ31 Earthworm III :
Digestion, Skin & Excretion
STZ32 Cockroach I :
Morphology & Reproduction
STZ33 Cockroach II : Blood Circulation,
Respiratory & Nervous System
STZ34 Cockroach III : Digestion,
Excretory, Skin & Muscles
STZ35 Vertebrate Classes
STZ36 Sense Organs
STZ37 General Dissection of Rabbit
STZ38 Neuron
STZ39 Early Development of the Frog
STZ40 Frog's Morphology & Internal
Structure
STZ41 Frog's Urogenital System
STZ42 Frog's Circulatory System
STZ43 Frog's Nervous System
STZ44 Frog's Muscular System



STG13



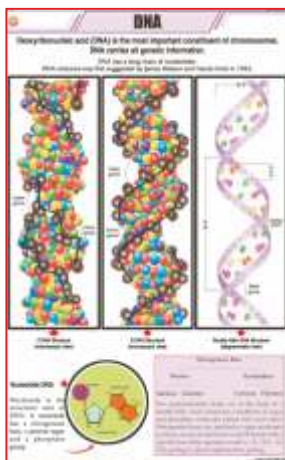
STG15



STG21



STG18



STG02

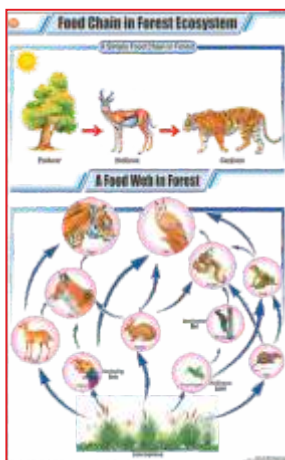
- STG01 The Cell Theory
- STG02 DNA
- STG03 RNA
- STG04 Levels of Organization
- STG05 Origin of Life
- STG06 Cellular Respiration
- STG07 Animal Husbandry
- STG08 Economic Plants
- STG09 Basic Agricultural Practices
- STG10 Medicinal Plants - I
- STG11 Medicinal Plants - II
- STG12 Energy Needs
- STG13 Fossil Fuels
- STG14 Petroleum & Natural Gas
- STG15 Renewable Sources of Energy
- STG16 Nuclear Energy
- STG17 Bio-Gas
- STG18 Nitrogen Cycle
- STG19 Oxygen Cycle
- STG20 Carbon Cycle
- STG21 Fire & Fire Extinguishers

- STG22 Soil- A natural Resource
- STG23 How Soil is formed and Soil Profile
- STG24 Types of Soils in India
- STG25 Food Chain in Forest Ecosystem
- STG26 Solar Cooker
- STG27 Water Harvesting
- STG28 Purification of Water
- STG29 Poultry
- STG30 Sericulture (L.H. Silkworm)
- STG31 Apiculture (L.H. Honeybee)
- STG32 Food Pyramid
- STG33 Microorganisms
- STG34 Mutation
- STG35 Enzymes
- STG36 DNA Replication
- STG37 Osmosis

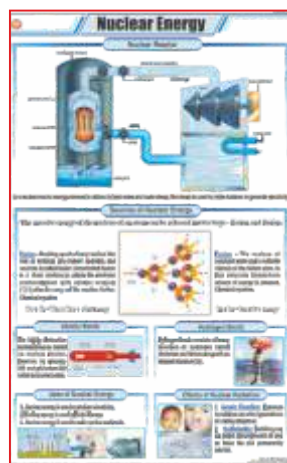
Each Price Rs. 150.00



STG03



STG25



STG16



STG12



STG23

PORTTRAITS OF GREAT PERSONALITIES

MATT CANVAS LAMINATED ON NUWOOD BOARD

GREAT SCIENTISTS

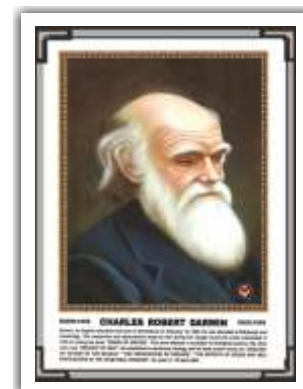
Size 31 × 43 cm Approx (GS01P - GS104P) Each Rs. 340.00

Size 45 × 60 cm Approx (GS01PS - GS104PS) Each Rs. 900.00

GS01 Charles Robert Darwin (B)
GS02 Gregor Mendel (B)
GS03 Lamarck (B)
GS04 Louis Pasteur (B)
GS05 Dr. William Harvey (B)
GS06 Leonardo-da-Vinci (B)
GS07 Sir Joseph Lister (B)
GS08 Anton Van Leeuwenhoek (B)
GS09 Carl Von Linnaeus (B)
GS10 Edward Jenner (B)
GS11 Sir James Young Simpson (B)
GS12 Thomas Henry Huxley (B)
GS13 Sir Edwin Ray Lankester (B)
GS14 Sir Ronald Ross (B)
GS15 Hugo De-vries (B)
GS16 Sir Charles Bell (B)
GS17 Alfred Russel Wallace (B)
GS18 Sir J. C. Bose (B)
GS19 Dr. Birbal Sahni (B)
GS20 Sunder Lal Hora (B)
GS21 Galileo Galilei (P)
GS22 Sir Isaac Newton (P)
GS23 Sir C.V. Raman (P)
GS24 Dr. H.J. Bhabha (P)
GS25 Archimedes (P)
GS26 Albert Einstein (P)
GS27 Thomas Alva Edison (P)
GS28 Robert Boyle (P & C)
GS29 Marie Curie (P & C)
GS30 Michael Faraday (C)
GS31 John Dalton (C)
GS32 Dr. P.C. Ray (C)
GS33 Dr. H.G. Khorana (B & C)
GS34 Dr. S.S. Bhatnagar (C)
GS35 S. Ramanujan (P & M)
GS36 Antoine Laurent Lavoisier (C)
GS37 William Ramsay (C)
GS38 Humphry Davy (C)
GS39 August Weismann (B)

GS40 Joseph Priestley (C)
GS41 Aristotle (B)
GS42 Dmitri I. Mendeleef (C)
GS43 Burbank Luther (B)
GS44 S.N. Bose (P)
GS45 M.N. Saha (P)
GS46 K.S. Krishnan (P)
GS47 K.N. Bahl (B)
GS48 J.J. Thomson (P)
GS49 Neils Bohr (P)
GS50 Gilbert Newton Lewis (C)
GS51 A.P.J. Abdul Kalam (P)
GS52 Dr. Vikram Sarabhai (P)
GS53 Aryabhata (P, A & M)
GS54 Dr. S.S. Joshi (C)
GS55 Sir Alexander Fleming (B)
GS56 D. Mata Parshad (C)
GS57 Benjamin Franklin (P)
GS58 Ernest Rutherford (P & C)
GS59 Dr. Raj Ramanna (P)
GS60 Nicholas Copernicus (A & P)
GS61 Alessandro Volta (P)
GS62 Alfred Nobel (C)
GS63 Anton Henry Bekuerel (P)
GS64 Atovan Gerok (P)
GS65 Benjemin Thomson (P)
GS66 Crick (B)
GS67 Watson (B)
GS68 Edward Victor Aplaton (P)
GS69 James Clark Maxwell (P)
GS70 Jessek Luious Gelusale (P & C)
GS71 Johns Kepeler (A & P)
GS72 Kalpana Chawla (A & P)
GS73 Max Planck (P)
GS74 Panchanan Maheshwari (B)
GS75 Varah Mihir (A, P & M)
GS76 Sunita Williams (P)
GS77 James Watt (P)

GS78 Andre Marie Ampere (P & M)
GS79 A. Graham Bell (P)
GS80 Edwin Powell Hubble (A & P)
GS81 Rakesh Sharma (A)
GS82 M.S. Swaminathan (B)
GS83 Robert Hooke (P, B & A)
GS84 S.R. Ranganathan (M & Lib.)
GS85 J.B.S. Haldane (B)
GS86 Guglielmo Marconi (P)
GS87 Wilbur Wright (P)
GS88 Orville Wright (P)
GS89 Neil Armstrong (P & A)
GS90 Wilhelm Roentgen (P)
GS91 S. Chandrasekhar (P & A)
GS92 Lord Kelvin (P & M)
GS93 Charles Babbage (P & M)
GS94 Friedrich Wohler (C)
GS95 Frederick William Herschel (A)
GS96 J.J. Berzelius (C)
GS97 James Chadwick (P)
GS98 Dr. Vijay P. Bhatkar (P)
GS99 C.N.R. Rao (C)
GS100 George Boole (M)
GS101 Albert Abraham Michelson (P)
GS102 Stephen Hawking (P & A)
GS103 Amedeo Avogadro (P)
GS104 Johannes Gutenberg (P)



(A) Astronomer, (B) Biologist, (C) Chemist, (M) Mathematician, (P) Physicist

ILLUMINATING GLOBES

Manufactured by Replogle Globes, USA,
World's largest globe manufacturing company

Political-cum-Physical Globe

Available in 2 sizes: 30 cm dia and 25 cm dia. Fitted on a moulded, black coloured base and smoked semi-meridian.

Salient Features:

- ★ Illuminated.
- ★ More than 4000 locations.
- ★ Time dial at the North Pole.
- ★ Unlit position shows Physical features.
- ★ Lit position shows Political features.
- ★ Certified by Survey of India.

Two sizes:

Item Code IG01 Copenhagen Blue Globe 30 cm dia Price Rs. 3900.00
Item Code IG02 Sweden Blue Globe 25 cm dia Price Rs. 2800.00



PHARMACY TEACHING PORTRAITS

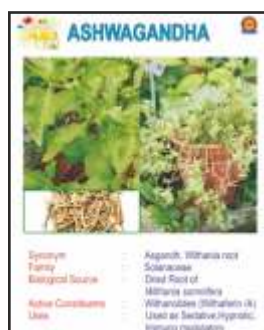
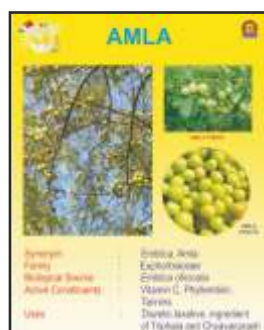
Sizes 31 cm x 43 cm

Price Each Rs. 340.00

PH01P Ajowan
PH02P Amla
PH03P Arachis Oil
PH04P Arjuna
PH05P Ashwagandha
PH06P Bael
PH07P Bahera
PH08P Bitter Orange Peel
PH09P Black Catechu
PH10P Black Peep
PH11P Brahmi
PH12P Cannabis
PH13P Celery
PH14P Chaulmoogra
PH15P Cinnamon
PH16P Clove Bud
PH17P Cocoa

PH18P Cotton
PH19P Cummin
PH20P Digitalis
PH21P Eucalyptus Oil
PH22P Garlic
PH23P Ginger
PH24P Ginseng Roots
PH25P Gymnema
PH26P Indian Gum
PH27P Ispaghula
PH28P Jatamansi
PH29P Linseed Oil
PH30P Momordica
PH31P Neem Oil
PH32P Nutmeg
PH33P Nux Vomica
PH34P Opium

PH35P Papain
PH36P Peppermint
PH37P Punarnava
PH38P Pyrethrum
PH39P Rhubarb
PH40P Senna Leaves
PH41P Shankpushpi
PH42P Shark Liver Oil
PH43P Strophanthus
PH44P Tamarinds
PH45P Tulsi
PH46P Turmeric
PH47P Valerian
PH48P Vasaka
PH49P Vidang
PH50P Vinca



MILESTONES IN MEDICAL SCIENCES

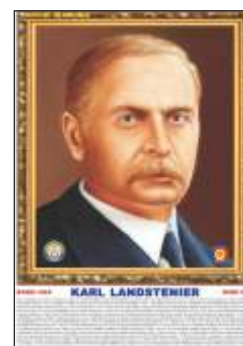
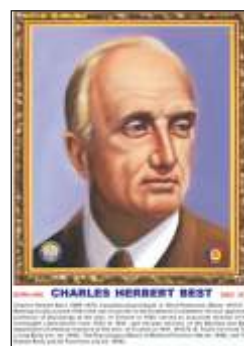
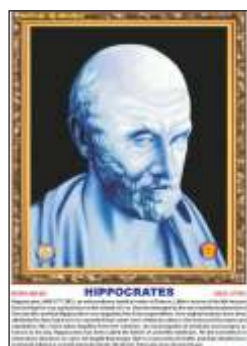
Size 31 cm x 43 cm (Code MM01P to MM34P)
 Size 45 cm x 60 cm (Code MM01PS to MM34PS)

Price Each Rs. 340.00
 Price Each Rs. 900.00

MM01 Hippocrates
MM02 William Harvey
MM03 Hermann Helmholtz
MM04 Charles Herbert Best
MM05 Fredrick Grant Banting
MM06 Louis Pasture
MM07 Karl Landstener
MM08 Robert Koch
MM09 Stephen Hales
MM10 Rene T.h. Laennec
MM11 Aristotle
MM12 Susruta

MM13 Ronald Ross
MM14 Edward Jenner
MM15 Sir Joseph Lister
MM16 Morgagni
MM17 Sir J. Young Simpson
MM18 Galen
MM19 Charles Sherrington
MM20 Samuel Hahnemann
MM21 Leonardo-da-vinci
MM22 Thomos Henry Huxley
MM23 Anton Van Leeuwenhoek
MM24 Alferd Russel Wallace

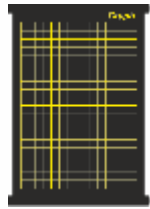
MM25 Sir Charles Bell
MM26 Gregor Mendel
MM27 Hugo De-vries
MM28 Maharishi Charak
MM29 Dhanvantari
MM30 Ashwini Kumars
MM31 Florence Nightingale
MM32 Mother Teresa
MM33 Oath Of Pharmacist
MM34 Oath Of Nursing (Nightingale Pledge)



For Social Studies, Please Ask For Our Separate Catalogue



Globe



Rollup Black
Charts & Graph



Country Maps



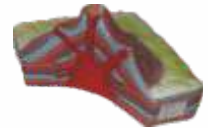
Outline Maps



State Maps



Delta Model



Volcano Model



GPS



Galaxy
Star Finder



Specimens
Rocks & Minerals



Solar System



Great Geographers



Charts



Dumpy Level

For Mathematics Lab, Please Ask For Our Separate Catalogue



Abacus



Drawing Models



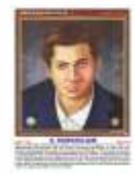
Cubes



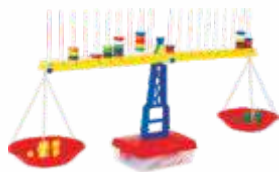
Geometry Box



Palm Clock



Portraits of
Mathematicians



Number Planet



Jr. Pythagoras
Theorem



Kitchen
Balance



OCTANT 3-D



Transparencies



Charts

For Your Requirements of Items For Science Lab, Please Ask For Our Separate Catalogue



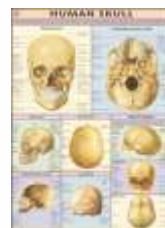
Human Body



DNA Model



Transparent Lung



Human Physiology, Food & Nutrition, Diseases, Yoganasa Charts



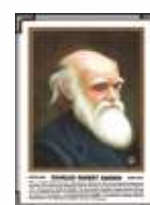
Frog Kit



Life Size Skull



Botany Model

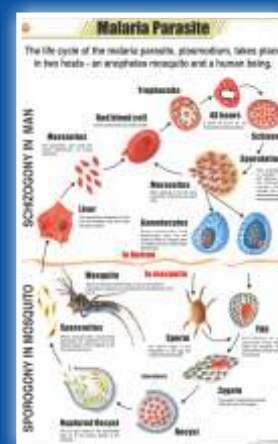
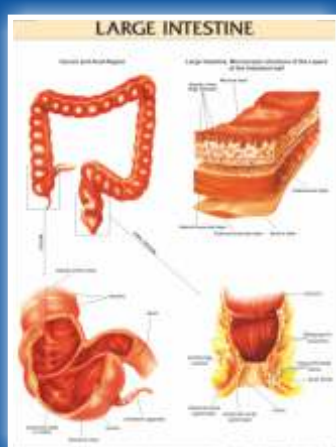
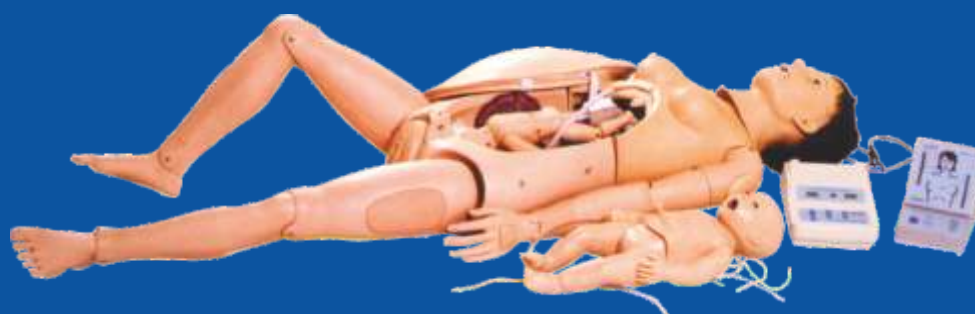


Scientists Portraits



Zoology Models

Skill Development is Necessary for a Better World.



84 Years of Dedicated & Honest Services



N. C. KANSIL & SONS

Kansil Bhawan, 8606, Model Basti, New Delhi-110 005

Phones : 91-11-47202020 (30 lines) Fax : 91-11-23550340

email: nckmaps@gmail.com

Website: www.nck-maps.com www.nckmap.com www.nckkansil.com

Ready Stocks – Best Quality – Competitive Rates