

Dbios

NURSING

Hand Phone-09729010431
(Harish Mahajan)

AIDS

Charts, Models & Manikins

Fundamental Lab

Manikin - 12

CPR - 12

CPR With AED - 1

Clinical Skill Lab

Suturing,
I.V. Training,
B.P Arm - 10

MCH

Maternal &
Infant Training

Models - 57

Charts - 45



Paediatric Lab

Models - 10

Charts - 62

Community & Nutrition Lab

Models - 20

Charts - 60

Anatomy & Physiology

Models - 35

Charts - 108

DESH BIOLOGICAL WORKS

1245, Hargoolal Road, Ambala Cantt-133001, Haryana (INDIA)

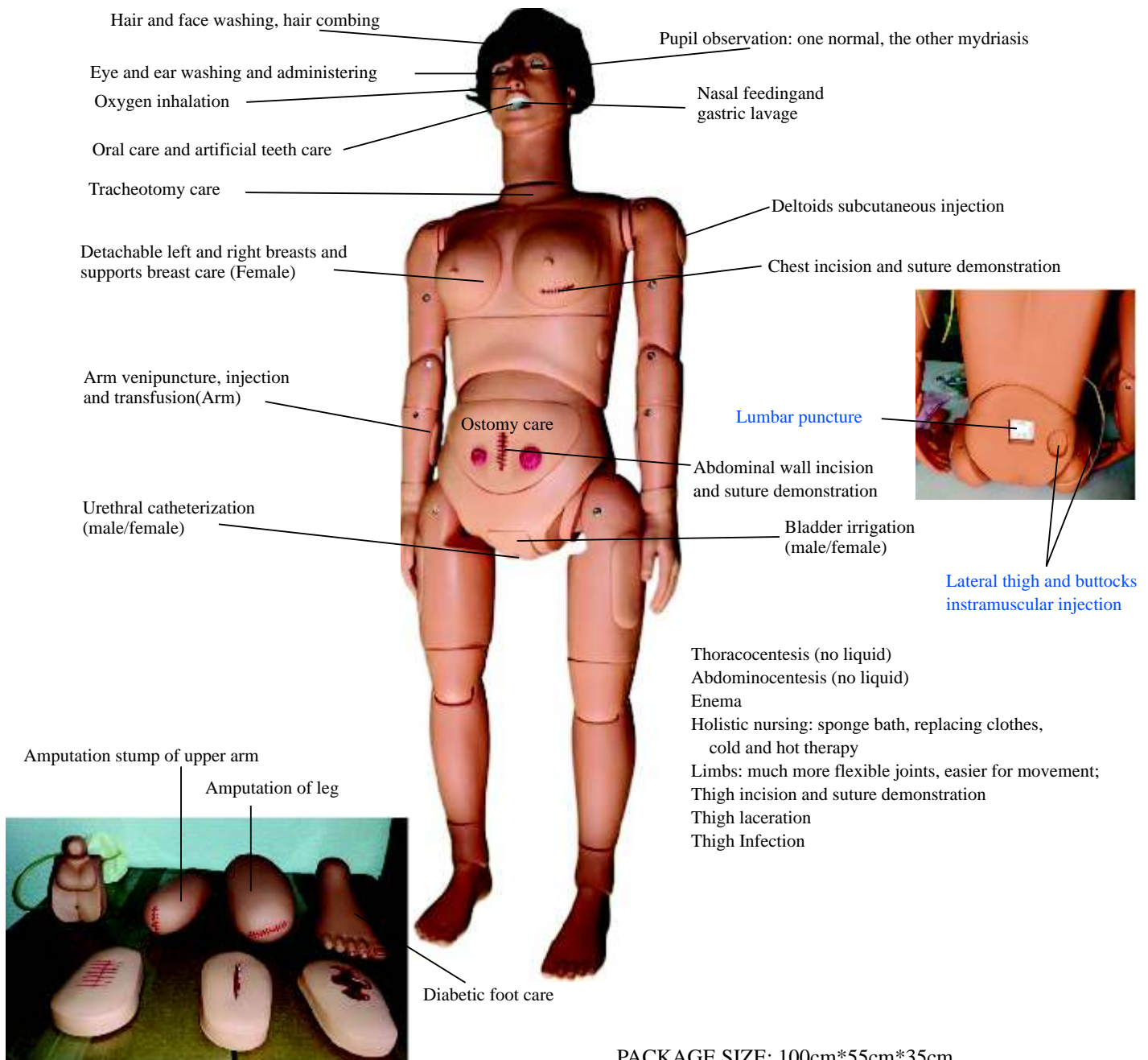
Ph. : 0171- 4007531, 2643822, Mob. 09729010431, 09896662901

Website : www.dbios.org, e-mail: desh@dbios.org, deshbiological@gmail.com

Mfrs. of Nursing, Medical, Engg. Charts & Models.

Dbios-001 Multi-functional Nursing Manikin(Female) with breast care

Venipuncture, injection, blood transfusion (Arm),trauma modules for evaluation and care

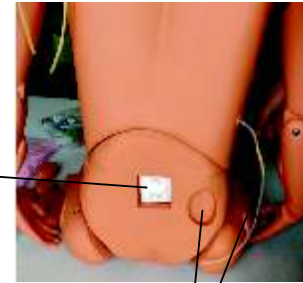


PACKAGE SIZE: 100cm*55cm*35cm
G.W.: 25KG

Dbios-002 Female Nursing Manikin with interchangeable male & female chest , male/female interchangeable organs & breast cancers for breast examination , Venipuncture, injection, blood transfusion (Arm)



Lumbar puncture



Lateral thigh and buttocks
intramuscular injection

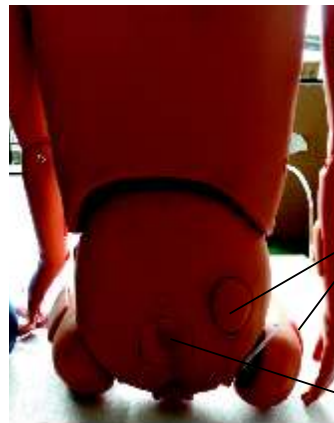
Features

- Hair and face washing
- Eye and ear washing and administering
- Oral care and artificial teeth care
- Endotracheal intubation (teach demonstration only, not for training)
- Tracheotomy care
- Oxygen inhalation
- Nasal feeding and gastric lavage
- Pupil observation: one normal, the other mydriasis
- Ostomy
- Lumbar puncture (no liquid, with removable skin cover)
- Thoracocentesis (no liquid)
- Abdominocentesis (no liquid)
- Venipuncture, injection, blood transfusion (Arm)
- Deltoid subcutaneous injection
- Vastuslateralis injection and buttocks intramuscular injection
- Female/male urethral catheterization
- Female/male bladder irrigation
- Enema
- Holistic nursing: sponge bath, replacing clothes
- Detachable left and right breasts and supports breast care (Female only)

PACKAGE SIZE: 100cm*55cm*35cm

G.W.: 18KG

Dbios-003 Basic Nursing Manikin Venipuncture, injection, blood transfusion (Arm), Ulcer modules (bedsore), MALE/FEMALE INTERCHANGE ORGANS



Vastuslateralis injection and
buttocks intramuscular injection

Ulcer modules (bedsore)

atures

Hair and face washing

Eye and ear washing and administering

Oral care and artificial teeth care

Tracheal intubation via mouth(teach demonstration only, not for training)

Postoperative care for tracheotomy

Oxygen inhalation

Nasal feedingand gastric lavage

Pupil observation: one normal, the other mydriasis

Ostomy care (no liquid)

Thoracocentesis (noliquid)

Abdominocentesis (no liquid)

Venipuncture, injection, blood transfusion (Arm)

Deltoid subcutaneous injection

Male/Female urethral catheterization

Male/Female bladder irrigation

Enema

Holistic nursing: flexible limbs joints, sponge bath, clothes changing,
cold & hot therapy

Dbios-004 Basic Nursing Manikin Female

CPR simulation, Venipuncture, injection, blood transfusion (Arm)

Features

- Hair and face washing
- Eye and ear washing and administering
- Mouth cavity and artificial teeth care
- Breast care
- Postoperative care for tracheotomy
- Oxygen inhaling
- Nasal feeding
- Gastrolavage
- Ostomy care (no liquid)
- CPR simulation
- Chest Cavity Puncture (no liquid)
- Lumbar puncture (no liquid)
- Venipuncture, injection, blood transfusion (Arm)
- Deltoid subcutaneous injection
- Buttocks intramuscular injection
- Vastuslateralis injection
- Female bladder irrigation
- Female urethral catheterization
- Enema
- Holistic nursing: flexible limbs joints, sponge bath, clothes changing, cold & hot therapy.

Ask for

Anatomy : Charts, Models & Slides

Physiology: Charts, Models

Biochemistry: Charts, Models

**Community Medicine: Charts, Models
& Slides**

Pathology: Charts, Models & Slides

Forensic: Charts, Models & Slides

Microbiology: Charts, Models & Slides

Pharmacology :Charts, Models

Obg & Gyane: Charts, Models



Dbios-005 Advanced Full-functional Elderly Nursing Manikin

with Male & female chest, Male & Female Interchangeable organs, B.P. Measurement

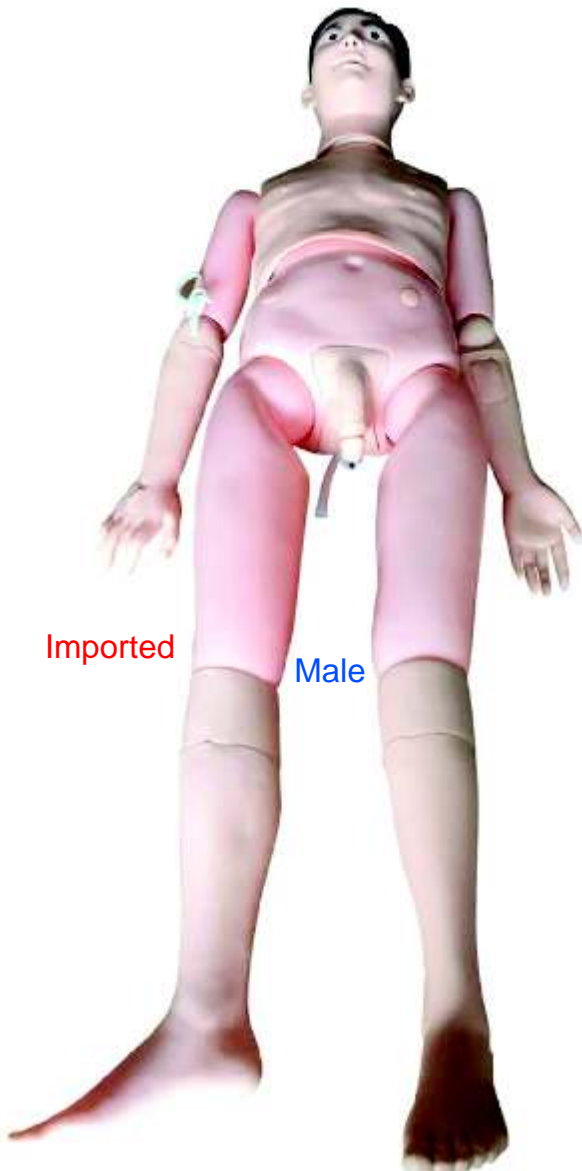


Female Chest

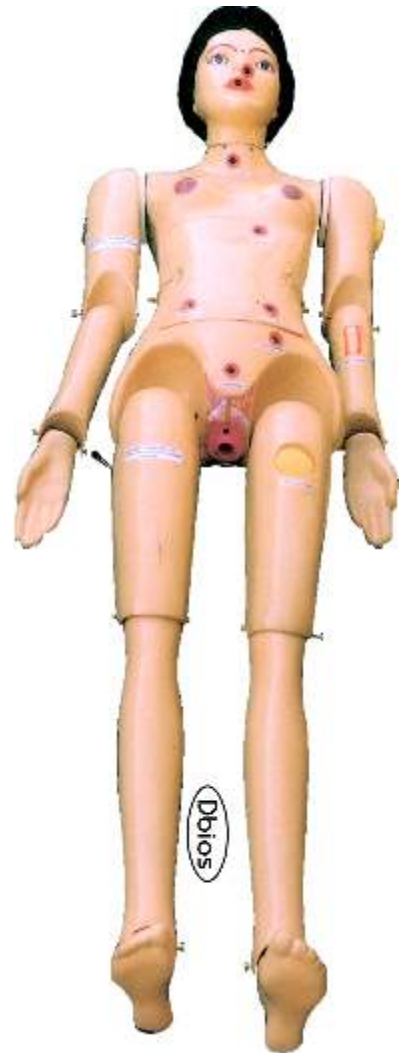


1. Hair and face washing
2. Manually simulate carotid pulse
3. Eye and ear washing and administering
4. Mouth cavity and artificial teeth care
5. Endotracheal intubation via mouth (demonstration only, not for training)
6. Tracheotomy
7. Oxygen inhaling
8. Oral and nasal feeding
9. Gastrolavage
10. Venipuncture, injection, transfusion (arm)
11. Deltoid subcutaneous injection
12. Vastuslateralis injection
13. Buttocks intramuscular injection
14. Male/female urethral catheterization
15. Male/female bladder irrigation
16. Stoma drainage
17. Colostomy
18. Enema
19. Sacral ulcer care
20. Holistic nursing: sponge bath, replacing clothes, cold and hot therapy
21. Realistic limbs joint, stiff simulated joints, truck may lean forward, can sit it the wheelchair
 - a) Truck- rotation, flexibility
 - b) Neck- rotation, flexibility, lateral curvature
 - c) Shoulder and buttock- endoduction, abduction, rotation, flexibility
 - d) Elbow-internal rotation, external rotation
 - e) Knee- internal rotation, external rotation
 - f) Wrist-internal rotation, flexibility, stretching, bending
 - g) Ankle- introversion, eversion, endoduction, abduction
22. Non-invasive blood pressure measurement
 - a) Systolic and diastolic pressure may be set individually in steps of 1mmHg
 - b) Systolic pressure 0-300mmHg, diastolic pressure 0-300Hg
 - c) Korotkoff sound volume in ten steps, 0-9

IMP-92M Multi functional (Male)
Patient care Manikin

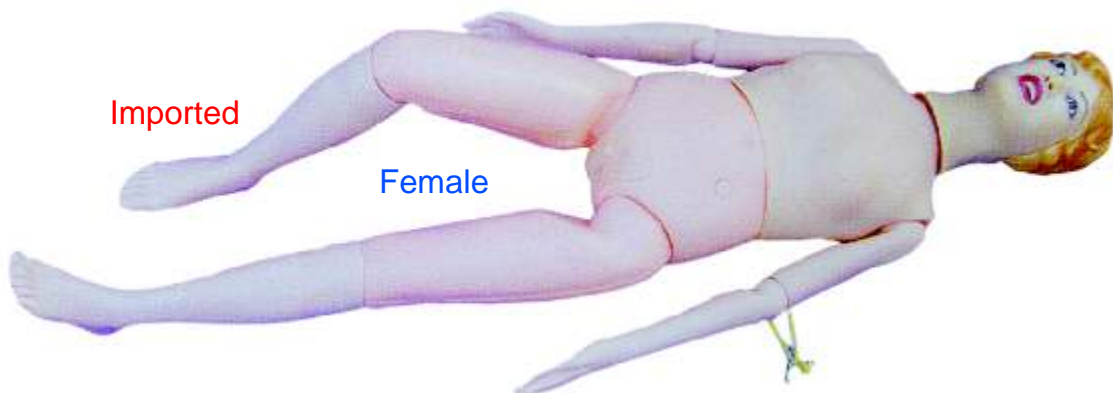


AM 92 Nursing Doll Bed Size (Male OR Female)
Fibre glass



AM 92 B Combine with male & female organ

IMP - 92P Multifunctional Patient Care Manikin (Female)



IMP 117A Patient Care Simulator with Ostomy (Male or Female)

Features:

- Full size adult manikin.
- Soft lifelike face skin.
- Stylish wig for hair care exercises and surgical draping.
- Movable jaw with tongue.
- Removable upper and lower dentures for oral hygiene.
- Realistic eyes in eye sockets for ophthalmic exercises.
- Ear canal for otic drops and irrigation.
- Mouth, nose and tracheotomy openings for naso-gastric lavage and gavage.
- Interchangeable male organ.
- Bends at waist as in human.
- 360° intramuscular injection site in right and left upper arm.
- Intramuscular injection site in buttock.
- Enema administration capability.
- Realistic urethral passage and bladder for catheterization exercises.
- Vaginal douching and pap smear exercises with realistic vagina and cervix.
- No drip thumb latch with audible "click" provides secure seal between ostomies and internal tanks.
- Soft, realistic hands, feet, fingers, and toes.
- Jointed elbows, wrists, Knees and ankles.
- Bathing and bandaging activity.
- Detachable and removable internal tanks.
- New modular tricuspid valve permits **male or female catheterization** with soft silicone catheters.
- **Elevating pillow increases bladder pressure for increased flow during catheterization (Male or Female).**



IMP 102 Pediatric Care Simulator 5 Year old

Features:

- Soft lifelike face skin.
- Self -molded hair.
- Eyes open and close in realistic eye sockets for ophthalmic procedures.
- Fully articulating head and jaw with teeth and tongue.
- NG and otic exercises.
- Bends at waist as in human.
- Joint elbows, wrists, knees and ankles.
- Realistic hands, feet, fingers and toes.
- Soft upper body skin over hard upper body for realistic feel.
- Detachable at waist for easy storage.
- Bathing and bandaging activity.
- Intramuscular injection sites in deltoid and upper thigh.
- Interchangeable male organs.
- Tracheotomy opening.
- Male and female catheterization.
- Removable internal tanks.



- T-shirt and shorts.
- Neck brace.
- Soft carrying bag.

IMP 105 One Year Pediatric Care Simulator

Features:

- Soft, childlike face skin.
- Self-molded hair.
- Eyes open and close in realistic eye sockets for ophthalmic procedures.
- Fully articulating head and jaw with teeth and tongue.
- NG and otic exercises.
- Bends at waist as in human.
- Jointed elbows and knees.
- Realistic hands, feet, fingers and toes.
- Soft upper body skin over hard upper body for realistic feel.
- Detachable at waist for easy storage.
- Bathing and bandaging activity.
- Intramuscular injection sites in left and right upper thighs.
- Interchangeable male organ.
- Tracheotomy opening.

- Removable internal tanks.
- Enema administration.
- Neck brace.
- T-shirt and shorts.
- Soft carrying bag.



Dbios-0026

Infant Nursing Manikin

Features :

1. Head, neck and limbs can be moved freely. The chest skin can be replaced;
2. Cephalic venipuncture;
3. Umbilical venipuncture;
4. Oral and nasal intubation nursing;
5. Care of gastrolavage, enema and urethral catheterization;
6. Ostomy;
7. Deltoids and buttocks intramuscular injection;
8. Holistic nursing; sponge bath, replacing clothier, lactation and diaper changing.



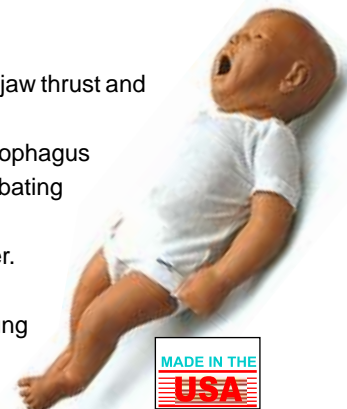
IMP 610 PEDI Airway Trainer Five Year



Features :

1. Full body
2. Realistic chest cavity containing realistic organs
3. Fully articulating head, neck and jaw permitting head-tilt lift, jaw thrust and neck extension into the sniffing position.
4. Anatomically accurate mouth, tongue, airway and esophagus designed to illustrate the profound differences between intubating an infant, a child or an adult.
5. Soft neck with cricocartilage permits classic sellick maneuver.
6. Realistic chest rise during ventilation
7. Realistic trachea, bronchi and lungs. observable bilateral lung expansion under positive pressure ventilation
8. Airway narrows below vocal cords
9. Realistic vocal cords with "fish-eye" appearance

IMP 612 Newborn PEDI Airway Trainer



Dbios-0020 Full Functional Neonatal Nursing Manikin + CPR



1. Designed according to neonatal anatomical structure, which features skin softness, real touch feeling, flexible joints and supports all kinds of nursing operations;
2. General care: diapers replacement, clothes wearing and changing, oral care, cold and hot therapy, binding up;
3. Venipuncture/ transfusion: arm veins include right arm cephalic vein and superficial dorsal vein; Scalp vein includes posterior auricular vein and superficial temporal vein. There will be "Pop" feeling when the needle penetrates into the vein, and simulative blood backflow means successful puncture. Same site of the skin and vessels allows multiple repeated puncture training.
4. Umbilical cord care: ligation of umbilical cord, umbilical venous intubation and transfusion;
5. Gastric intubation: used for gastrointestinal decompression, nasal feeding and gastric lavage;
6. Teaching demonstration of trachea cannula via mouth and oxygen inhalation;
7. Bone marrow puncture: puncture via tibia, where allows medicine injection and transfusion.
8. Pulse: manually squeeze the bulb to simulate neonatal artery pulses including right brachial artery pulse, right femoral artery pulse and umbilical artery.
2. CPR: support multiple ventilation ways: mouth to mouth, mouth to nose, BVM to mouth; electronic monitoring of insufflation volume, compression depth; insufflation or compression can be trained separately.



IMP 102 A Five Year CPR and Trauma Care Simulator

Features:

- Fully articulating head and jaw with teeth and tongue.
- Individual disposable airways.
- Airway blocked when head is forward.
- Easily accessible chest cavity with molded ribcage, lungs, and heart.
- Realistic chest rise.
- Carotid and femoral arterial pulse points.
- Soft, lifelike face skin with molded hair.
- Eyes open and close in realistic eye sockets for ophthalmic purposes.
- One normal eye and one eye dilated.



- Jointed elbows, wrists, knees and ankles.
- Realistic hands, feet, fingers and toes.
- Detachable at waist for easy storage.
- Practice regular or vest CPR.
- Exercise suit.
- CPR.
- Arterial Site.
- Disposable Airway .
- Custom nylon carrying bag.



Dbios-022 Nursing Manikin + CPR with monitor

with interchangeable male & female chest , male/female interchangeable organs & breast cancers for breast examination,
Venipuncture, injection, blood transfusion (Arm)



Features

- Hair and face washing
- Eye and ear washing and administering
- Oral care and artificial teeth care
- Endotracheal intubation
- Tracheotomy care
- Oxygen inhalation
- Nasal feeding and gastric lavage
- Pupil observation: one normal, the other mydriasis
- Ostomy
- Lumbar puncture (no liquid, with removable skin cover)
- Thoracocentesis (no liquid)
- Abdominocentesis (no liquid)
- Venipuncture, injection, blood transfusion (Arm)
- Deltoid subcutaneous injection
- Vastuslateralis injection and buttocks intramuscular injection
- Female/male urethral catheterization
- Female/male bladder irrigation
- Enema
- Holistic nursing: sponge bath, replacing clothes
- Squeeze the bulb to simulate carotid pulse
- CPR: Supports multiple ventilation ways, such as mouth to mouth, mouth to nose, bag respirator to mouth, electronic display of inflation volume, compression site and depth.

**Looking for
Half Body CPR Manikins
Check Pg. No. 13,14**

IMP 115 B CPR Simon BLS

- Totally disposable airways for hygiene.
- Fully articulated head, neck, and jaw permitting head/tilt, chin lift, jaw thrust, and neck extension into the "sniffing" position.
- Airway blocked when head is forward.
- Easily accessible chest cavity with ribcage, lungs, and heart for realism and practice of the Heimlich maneuver.
- Realistic chest rise.
- Carotid and femoral arterial pulse points.
- Eye open and close; one pupil is dilated.
- Instrumented for Code Blue/CPR Link which monitor the cadence and depth of cardiac compression and

- Jointed elbow, wrists, knees, and ankles.
- 10 disposable airways.
- Detachable at waist for easy storage.
- CPR.
- Arterial Site.
- Venous Site.
- Disposable Airway.



IMP-115A Multi purpose simulator Full body with CPR, Gynae, Airway MGMT.& Breast Examination



REALISTIC CHEST CAVITY FOR CPR



BVM WITH REALISTIC CHEST RISE



OMNI' CODE BLUE' PACK



AIRWAY MANAGEMENT



TRACHEOTOMY



INJECTION AND INFUSION



BREAST PALPATION



OSTOMY CARE



INTERCHANGEABLE GENITALIA



Dbios-0030 Half Body CPR Training Combination WITH AED



1. Simulate standard open airway
2. External breast compression, intensity display of correct (at least 5cm).
(1). Buzzing sound of correct compression intensity
(2). Alarming sound of wrong compression intensity
3. Artificial respiration (inhalation): the volume of inhalation is observed through observing the wave of breast: (tidal volume $\leq 500\text{ml}/600\text{ml}-1000\text{ml} \leq$)
4. Operation methods: exercise operation
5. Comes with AED trainer.

Dbios-0031 Basic CPR Training Model (Half Body)

Features :

CPR manikin features:

1. Head can be raised up and down, neck joint is movable
2. Eyelid can open and close
3. Nose wing is soft, easy to tweak. The mouth can open and close. Can do mouth to mouth respiration or mouth to nose respiration
4. Consist of spring and heart model in heart part.
5. Skin is springy with natural skin color

CPR instrument feature:

- 1) Green light bright, heart pressure correct
- 2) Red light bright, heart pressure too strong
- 3) Not light bright, pressure on a wrong place or pressure is too light

Packing: 1Pcs/carton, 63x25x44cm, 8kgs



IMP 136 Fat Old Fred Manikin (Elderly & overweight)



IMP 116B Economy CPR Adult Manikin



IMP 130 Little Junior™ CPR Manikin(Child)



IMP 131 Baby Anne™ Manikin (Infant)



Manikin & Airway

Desh Biological Works

IMP 609A Adult Airway Management & CPR Trainer ½ Body (MADE IN USA)



The HAL S315 is the perfect trainer for practicing fundamental intubation and CPR skills. HAL features a lifelike airway and a durable chest recoil system. Moreover, it's OMNI and CPR compatible, thus capable of providing real-time CPR quality feedback and reporting



1. Manually open or close eyes
2. Realistic head tilt/chin lift and jaw thrust
3. Durable lifelike airway anatomy
4. Nasal and oral Intubation: ETT, LMA, KingLT
5. Chest rise with bag valve mask ventilation
6. Gastric distension with esophageal intubation
7. Right mainstem intubation presents unilateral chest rise.
8. CPR hand positioning landmarks and realistic chest compression recoil and depth
9. Carrying bag

Dbios-0040

Adult Airway Management Model



Features :

1. Anatomically accurate head and neck structures, which will be more effectively to illustrate "Sellick maneuver".
2. Simulate laryngospasm and tracheotomy care.
 - a) Supports thyrocricocentesis and tracheotomy care.
 - b) Supports practice in airway obstruction clearing and liquid foreign body suction.
 - c) Observe lung breathing movement when making artificial respiration, and supports practice in breath sounds auscultation.
 - d) Tracheal intubation via mouth
 - e) Nasal feeding and gastric lavage
 - f) Supports oral cavity, oropharynx and nasopharynx suction, make bronchial suction via mouth or nose with bronchoscope
 - g) Comes with simulative sputum to make the practice more realistic
 - h) Squeeze the bulb manually to simulate the carotid pulse

JP 302 Advanced Half-length CPR Training Manikin



Dbios-0041

Adult Airway Intubation training Model



Features :

1. Accurate anatomical marks with good view of intubation
2. Supports trachea cannula via mouth and nose
3. Proper intubation, the lungs will inflate after air supply
4. Mistakenly insert into esophagus, the stomach will inflate after air supply, and there's electronic alarm function
5. If wrong operation make laryngoscope compress the teeth, there will be electronic alarm function.

Dbios-0050 Surgical Suture Arm



Features :

1. With features of lifelike shape and realistic touch, the model suitable for cutting, suturing and bandaging exercise.
2. With wonderful elasticity and flexibility of skin, each model can be used for hundreds of times.

Dbios-0051 Surgical Suture Leg



Features :

1. It can be simulate basic surgical skills such as cutting, suturing, bandaging and etc.
2. With wonderful elasticity and flexibility of skin, each model can be used for hundreds of times.

Dbios-0054

Advanced Blood Pressure Arm



Features :

1. This model is a simulated right hand. It has remarkable exterior features and precise anatomical structure. Arterial blood pressure measurement training can be run on this simulator.
2. It provides the sound of Korokoff Gap.
3. The contraction pressure and diastolic pressure can be set individually before practice.
4. The numerical value of the contraction pressure and diastolic pressure can be set in any value.
5. Pressure value is indicated by mm Hg.
6. The setting precision can be as low as 1 mm Hg.

Dbios-0053 Surgical Suturing and Bandaging Display Simulator

The simulator provides commonly used surgical incisions, which simulate all kinds of female thoracic and abdominal incisions, tube drains and amputation stump. Students can practice wounds treatments of washing, disinfecting, changing dressing, bandaging and etc. The skin is dry, soft and flexible, allowing the bandages to adhere better.

Features :

1. Thyroidectomy
2. Mid-sternal split - with two chests tube drains
3. Right mastectomy - with simulated drain
4. Right cholecystectomy - with simulated T-tube
5. Labarotomy
6. Appendectomy
7. Left colostomy
8. Right ileostomy
9. Abdominal Hysterectomy (transverse incision)
10. Left nephrectomy (thoraco-abdominal incision)



11. Right nephrectomy (oblique incision)
12. Laminectomy
13. Sacral decubitus ulcer - stage 2
14. Right thigh amputation stump
15. Bromidrosis surgery incision of right underarm (transverse suture)
16. Incision of gathered breast (radial ptern or arc incision)
17. Catheter drainage of pneumothorax
18. Suprapubic cystostomy
19. Excision of indirect inguinal hernia
20. Incision of femoral artery punction

Dbios-0060 Venipuncture Training Arm



1. Simulating injection, blood transfusion, hemospasia of the arm;
2. There is obvious feeling when needle penstrates insertion;
3. Veins and skin can be acupunctured repeatedly, and these operations won't cause leaks.

Dbios-0061

Venipuncture & Intramuscular Injection Arm

1. Injection, blood transfusion, hemospasia and deltoid intramuscular injection can be performed;
2. The skin can be replaced.



Dbios-0062

Suture Training Pad (with stand)

Features :

1. It can be simulate basic surgical skills such as cutting, suturing, bandaging and etc.
Multi-funtional Cutting & Suturing Pad
Suturing training for kinds of truma shapes and positions



IMP 125 A Advanced Multipurpose Venous Training Arm

Features:

- Arm rotates 180° at deltoid region.
- Connects to all Gaumard adult simulators.
- Subtle venous network in arm and hand.
- Cephalic, basilic, antecubital, radial, and ulnar veins.
- Realistic "pop" as needle enters vein.
- Intramuscular injection site in deltoid area.
- Subcutaneous injection areas on the volar side of the forearm and the lateral side of the upper arm.
- Squeeze bulb to increase or decrease venous

- Veins stand out or collapse.
- Easily replaceable skin and veins.
- Administration of medication by intravenous bolus.
- Simulation of infusion technique.
- Blood collection exercises with simulated blood.
- Simulation of clenched fist and tourniquet position.
- Smoked Lucite base with stand.
- Soft nylon carrying bag.
- Set-up kit with simulated blood concentrate, pressure bulb, blood dispensing bag, spare skin, funnel, and powder.



IMP 125 B Intravenous Training Arm

Features:

- Prominent venous network.
- Simulated cephalic, basilic, antecubital, radial, and ulnar veins.
- Simulation of infusion technique.
- Blood collection exercises with simulated blood.
- Administration of medication by intravenous bolus.
- Simulation of clenched fist or tourniquet position.
- Simulation of collapsed veins.

- Resealing veins and outer skin.
- Smoked Lucite base with stand.
- Soft carrying bag.
- Set-up kit with simulated blood concentrate, pressure bulb, blood dispensing bag, spare arm skin, funnel, and talcum powder.
- Instruction manual.

IMP 125 D Five Year Injection training Arm

- Intravenous injections, infusion, and blood collection.
- Subcutaneous injections in both flexor and lateral sides of forearm.
- Intramuscular injections in deltoid area.
- Lifelike venous structure.
- Dorsum of hand has two veins for additional intravenous set-up.
- Interchangeable hands: clasping hand and fingers extended for finger prick.
- Squeeze bulb simulating either collapsed or distended veins.
- Easily replaceable skin and veins that withstand multiple needle sticks.
- Mounted on smoked Lucite base and supplied with blood bag and stand, synthetic blood concentrate, squeeze bulb, and spare arm skin.
- Soft carrying bag.



IMP 125 G Newborn Intraosseous Infusion and Injection Leg.

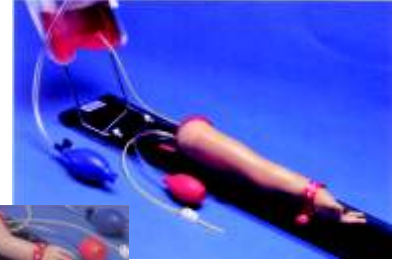
Features:

- Intraosseous vascular access.
- Sixteen (16) interchangeable, realistic tibial bones.
- Realistic "pop" as needle penetrates cortex and enters bone marrow.
- Blood return upon successful entry.
- Infusion of fluid/medications.
- Easily replaceable skins and veins that withstand multiple needle sticks.
- Mounted on smoked Lucite base and supplied with blood bag and stand, synthetic blood concentrate, squeeze bulb, and spare leg skin.

IMP 125 E One Year Injection Arm Newborn Injection Arm

Features:

- Medial venous structure.
- Two veins in dorsum of hand.
- Radial and brachial arteries.
- Squeeze bulb simulating either collapsed or normal veins.
- Easily replaceable skin and veins that withstand multiple needle sticks.
- Mounted on smoked Lucite base and supplied with blood bag and stand, synthetic blood concentrate, squeeze bulb, and spare arm skin.



IMP 100 A Labor Delivery Module

Features:

- Six labor stations selected to represent conditions of the cervix and vagina prior to labor, during labor, and at birth in a primigravid woman.
- Stations may be placed in birth canal of the IMP 100.
- Stations illustrated are: STA-5 prior to onset of labor; STA -4 cervix partially effaced; STA-3 cervix fully effaced; STA0 fetal head at plane of ischial spine; STA+2 cervix nearing full dilation; STA+5 crowing of fetal head.
- Six labor stations.
- Carrying case.

IMP 100 Advanced Childbirth Simulator

Features:

- Normal vaginal delivery.
- Complete, frank, and footling breech birth.
- C-section delivery.
- Ritgen's maneuver.
- Episiotomy.
- Vertex presentation.
- Intrauterine manipulation.
- Vertex/vertex, vertex/breech, breech/vertex, or breech/breech presentation in multiple birth.
- Prolapse of umbilical cord.
- Demonstration of placenta previa: total, partial, and marginal.
- Normal delivery of umbilical cord and placenta.
- Palpation of fetal fontanelles.
- Removable diaphragm end plate for manual positioning of fetal baby/babies.
- Removable stomach cover for positioning fetus.
- Life-size pelvic cavity with major anatomic landmarks.
- Hand-painted outline of the bony pelvis.
- Three soft vulval inserts for episiotomy exercises.
- One baby boy and one baby girl, each with umbilical cord and placenta.
- Anatomically accurate backbone and fontanelles on fetal baby/babies.
- One skin-tone stomach cover.
- Four extra umbilical cords.
- Two umbilical clamps.
- Talcum powder.
- Instructional manual.



IMP 152 ZOE Gynecologic Simulator.

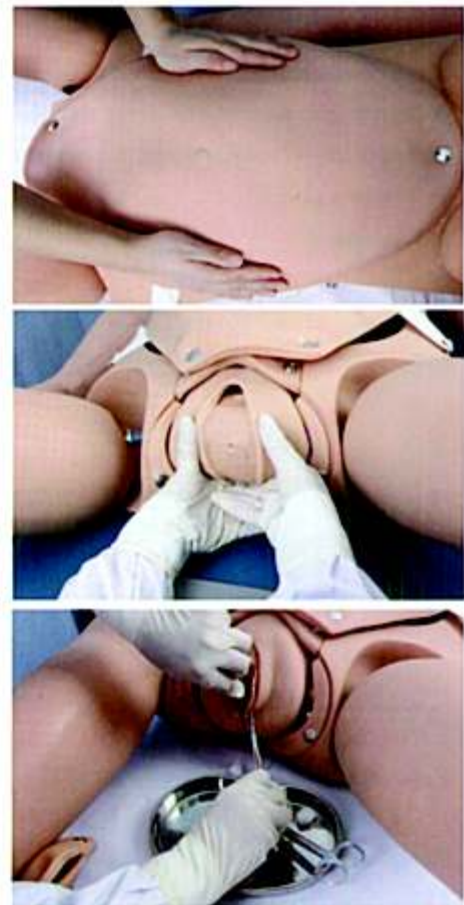
Features:

- Full size adult female lower torso with relevant internal anatomic landmarks.
- Bi-manual pelvic examination.
- Palpation of normal and pregnant uteri.
- Vaginal examination, including insertion of speculum.
- Visual recognition of normal and abnormal cervixes.
- Uterine sounding.
- IUD insertion and removal.
- Distal end of vagina facilitates introduction of a female condom or sizing a 75mm diaphragm.
- Removable introitus adds flexibility for addition of multiple ZEO options.
- Minilaparotomy.
- One anteverted and one retroverted parous uterus.
- One ten-week pregnant uterus.
- One twenty-week pregnant uterus.
- Five normal cervixes with patent os.
- Four abnormal cervixes.
- Ten fallopian tubes.
- Realistically sculpted and anatomically accurate ovaries and fimbriae.
- Uterus and cervix feature patented "screw" design for fast and easy change-out.
- Talcum powder.
- Instruction manual.



Dbios-0070 Maternal and Neonatal Childbirth Emergency Training System with CPR**Feature & Function**

1. Realistic anatomical structure of the puerpera with flexible limbs, and supports lithotomy position.
2. Removable abdominal cover, fetus for delivery comes with flexible limbs and supports all kinds of fetal positions.
3. **Fetal heart sounds can be auscultated at the belly.**
4. Supports prenatal Leopold maneuver to check fetal positions.
5. Auto delivery system, simulates the whole process of childbirth, and the fetal head descending position and dilation of cervical os can be measured during childbirth.
6. Supports puerpera tracheal intubation.
7. Puerpera's arm supports venepuncture and allows drug therapy.
8. Puerpera nursing care, including basic nursing, hair and face washing, oxygen inhalation and oral cavity care, etc.
9. Cervical modules supports prenatal cervical examination and simulate 6 stages of cervical dilation.
10. Simulates all kinds of dystocia, e.g.: placenta previa, prooapse of cord, cord around neck, breech delivery.
11. Episiotomy modules include left incision, median incision and right incision; allow postoperative wound care for perineotom.
12. Uterus, 48 hours after delivery, can simulate postpartum uterus bleeding.
13. Emergency and vital signs monitoring: Manually simulates carotid pulse, supports BP measurement and CPR Training.
14. Neonatal emergency nursing manikin supports neonatal care, neonatal CP puncture, etc.



Desh Biological Works

Dbios-0072

Vacuum Deliver Simulator

Features :

Smooth, soft skull with fontanelles for realistic vacuum delivery

PACKAGE SIZE: 51cm*24.5*37cm

G.W.: 4.4KG



Maternal & Infant Training

Dbios-0071 Maternal Simulator

Features :

1. The model consists of adults female torso, full-term fetus.
2. The model with realistic rib, heart, lungs and other anatomical structure.
3. Automatic delivery system, process through the delivery device fully simulate the real delivery to achieve position rotation.
4. Delivery speed can be adjusted.
5. Practicing, examining the fetal heart sound frequency, heart rate range of 60 - 180 times / min
6. With two months of pregnancy is simulated uterine size, can be filled with gas
7. A flexible joints, limbs soft full-term fetus



Gynae

IMP-100G Human Reproduction and Development kit

Features :

7-8 week Sh. wt. 0.19 lbs(0.09 kg)

13 week Sh. wt. 0.38 lbs (0.17 kg)

20 week Sh. wt. 0.63 lbs (0.29 kg)

5 month Female. Sh. wt. 0.75 lbs. (0.34 kg)

5 month Male Sh. wt. 0.75 lbs. (0.34 kg)

7 month Female. Sh. wt. 0.2 lbs. (0.91 kg).

Full-Term Male. Sh. wt 7 lbs. (3.18 kg).



Dbios-0073

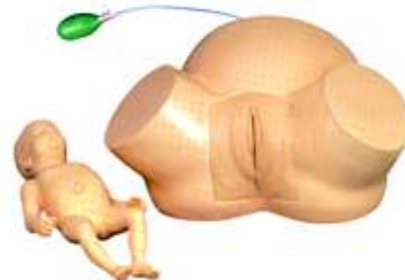
Difficult Labor Simulator

Features :

The simulator can demonstrate all kinds of difficult deliveries:

PACKAGE SIZE: 51cm*24.5*37cm

G.W.: 4.4KG

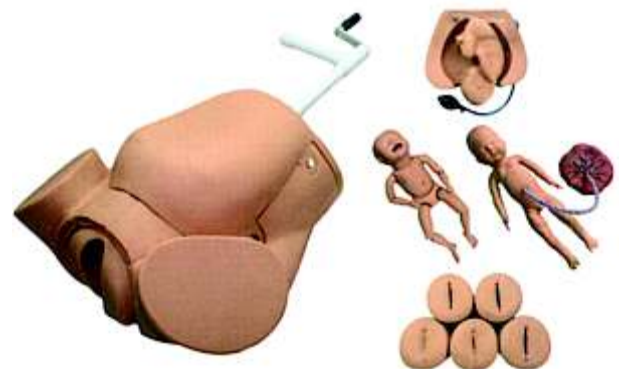


Dbios-0074

Advanced Abdominal Palpation & Delivery Mechanism Integrated Simulator

Features :

1. Demonstrate the fetus, umbilical cord and placenta of vacuum-assisted delivery, flexible fetal joint, and multiple normal and abnormal positions of fetal delivery can be showed.
2. Equipped with manual delivery mechanical parts; by manual, the whole delivery process including engagement, descending , flexion, internal rotation, extension, restoration, external rotation and fetal delivery, can be showed.
3. Can practise and master the abnormal comprehensive skills labor, labor (dystocia), midwifery and perineum protection.
4. Equipped with soft elevated for Leopold Maneuver practice.
5. Equipped with models for cervical and vaginal examination practice before and at birth.



Dbios-0075**Advanced Labour Simulator With Leopold Maneuver**

Features :

1. An anatomically correct pelvic model with fetus and placenta to give students experience with multiple technique and procedure for emergency childbirth.
2. Twinborn (one infant boy and one infant girl) presentation and delivery.
3. Can practice and master the comprehensive skills normal labor abnormal labor, midwifery and perineum protection.
4. Leopold Maneuver can be practiced in this model.



PACKAGE SIZE: 47.5cm*30cm*40cm
G.W.: 9.5KG

Dbios-0076**Advanced Childbirth Simulator With 2 Babies**

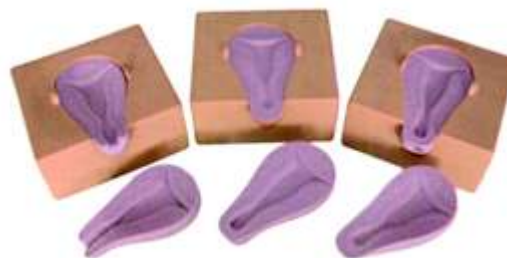
Features :

1. An anatomically correct pelvic model with fetus and placenta to give students experience with multiple technique and procedure for emergency childbirth.
2. Twinborn (one infant boy and one infant girl) presentation and delivery.

Dbios-0080**Artificial Abortion Simulated Uterus**

Features :

1. Three pregnant uterus can be opened and add to simulated gestation sac;
2. Uterine dilator and curet can be inserted into cervix; can simulate curettage be operation and the simulated gestation sac can scraped;
3. With basement support and can fix uterus in the right position .

**IMP 100 C GYN/AID Gynecologic Simulator.**

Features:

- Full size female adult lower body with removable soft outer skin.
- One normal anteverted uterus with transparent top and round ligaments.
- Seven uteri with one normal "control" uterus and six with external uterine abnormalities.
- Two normal cervixes with patent os for IUD insertion/removal.

- Uterus and cervix feature patented "screw" design for fast and easy change-out.
- Contraceptive sponge insertion and removal.
- Female condom insertion and removal.
- Diaphragm and cervical cap insertion and removal.
- Six cervixes with cervical abnormalities.
- Anatomically accurate fimbriae and ovaries.
- Talcum powder.
- Instruction manual.



MADE IN THE
USA

IMP 153 Hysteroscopy Simulator.

Features:

- Full size female adult lower torso with removable soft outer skin.
- Seven uteri including normal "control" uterus with healthy internal and external appearance.
- Internal anatomic artwork of normal and abnormal uteri.
- Internal representation of endometrial polypsis, fibroids, early and advanced carcinoma of the endometrium, torsion of sloughing fibroid, and carcinoma of the fundus.
- External representation of normal and abnormal uteri.
- Palpation of normal and abnormal uteri.
- Normal cervix and interchangeable uteri with patented "screw" design.
- Instruction manual.

MADE IN THE
USA



Dbios-0090

Gynecological Training Model

Features :

1. Normal and abnormal uteri palpation
2. Bi-manual and tri-manual pelvis examination
3. Vaginal speculum and colposcope examination
4. Visually observe normal and abnormal lesions cervix
5. Placing and removal of IUD
6. Observe the septal size and position
7. Observe the uterus, ovary, Fallopian, round ligament and other structures
8. Normal and abnormal cervix models
 - a) normal cervix
 - b) IUD placing and removal from normal cervix
 - c) chronic cervicitis
 - d) cervical laceration
 - e) cervical polyp
 - f) cervical inflammation Naboth cyst
 - g) acute cervicitis
 - h) cervical adenocarcinoma
 - i) trichomonad cervicitis
 - j) cervical verruca acuminata
 - k) cervical vitiligo



9. Normal and abnormal uteri and accessories models
 - a) normal uterus and accessories (uterine anterior wall is transparent, and it supports placing and removal of ICD)
 - b) myoma of uterus
 - c) uterus with right hydrosalpinx
 - d) uterus with right salpingitis
 - e) uterus with right oviduct tubercle
 - f) uterus with right tubal ovarian cyst
 - g) uterus with obvious anteversion and anteflexion
 - h) uterus with obvious hypsokinesia and retroflexion
 - i) gravid uterus (five-month fetus)
 - j) ectopic gestation
 - k) salpingoemphraxis
 - l) salpingoemphraxis

Dbios-0091

Maternity Examination Simulator (with FHS)

Features :

1. Simulates a torso of adult female in supine position.
2. Consists of breast, pubic symphysis, pelvis and fetus, etc.
3. Supports practice in Leopold Maneuver, Fetal heart sound auscultation, external pelvic measurement and mammary care.
4. Manually squeeze the bulb to inflate the uterus to adjust its size to be close to real human status
5. Necessary bones for abdominal measurement and pelvis measurement engraved in the simulator, which makes the palpation more realistic.
6. The speed and volume of the fetal heart sound can be adjusted anytime, FHR : 80 - 180bpm, and it varies with the frequency.



Dbios-0092

Perineum Suturing Training Model

Features :

1. Right posterior incision, left posterior incision or median incision can be selected to exercise perineum cutting and suturing.

PACKAGE SIZE: 16.5cm*10.5cm*16.5cm

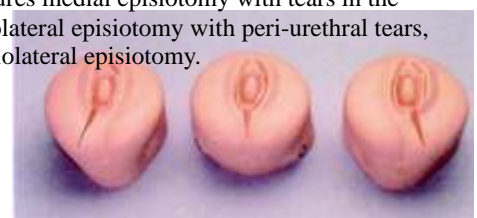
G.W.: 0.94KG



IMP 107 A Postpartum Suturing Trainer

Features:

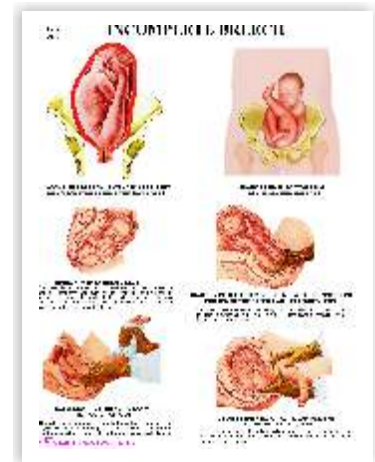
- Soft vinyl enables use of standard needle holder with "00" or "000" chromic sutures.
- Three modules features medial episiotomy with tears in the labia minora, mediolateral episiotomy with peri-urethral tears, and a standard mediolateral episiotomy.



Midwifery Charts as per INC Syllabus

Size 20"x26" Laminated & Fitted with Plastic Strip **OR**
Size 20"x26" Laminated & Framed on NU-Wood Board

DMC 1.	Breast Changes in pregnancy	DMC 10.	Face presentation
DMC 2.	Uterine changes in pregnancy	DMC 11.	Brow presentation
Stages of Labour			
DMC 3	First Stage	DMC 12.	Twin pregnancy
DMC 4.	Second Stage	DMC 13.	Placenta praevia different stages
DMC 5.	Third Stage	DMC 14.	Caput Succedaneum, Cephalhaematoma
Breech presentation			
DMC 6.	Complete breech	DMC 15.	Congenital Malformation of New Born
DMC 7.	Incomplete breech	DMC 16.	Variations of Cleft Deformity
DMC 8.	Foot presentation	DMC 17	Spina Bifida
DMC 9.	Shoulder presentation	DMC 18.	Hydrocephalus
		DMC 19.	Anencephalus

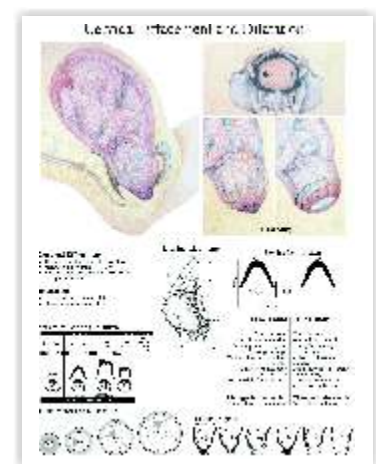


DMC 7

Child Birth Classic Series

Size 20"x26" Laminated & Fitted with Plastic Strip **OR**
Size 20"x26" Laminated & Framed on NU-Wood Board

CH 1301	Female Reproductive Anatomy
CH 1302	Male Reproductive Anatomy
CH 1303	Conception
CH 1304	The Developing Embryo
CH 1305	First Trimester
CH 1306	Second Trimester
CH 1307	Third Trimester
CH 1308	Fetal Presentation & Position
CH 1309	Cervical Effacement & Dilatation
CH 1310	Internal Exam During Labor
CH 1311	Internal Rotation
CH 1312	Extension Beginning
CH 1313	Fetal Head Emerging
CH 1314	Crowning
CH 1315	Extension Completes
CH 1316	External Rotation : Restitution
CH 1317	External Rotation : Shoulder Rotation
CH 1318	Expulsion
CH 1319	New Born
CH 1320	First Contact
CH 1321	Placental Separation & Expulsion
CH 1322	New Born Appearance & Procedures



CH 1309

Breast Care Charts

Size 20"x26" Laminated & Fitted with Plastic Strip **OR**
Size 20"x26" Laminated & Framed on NU-Wood Board

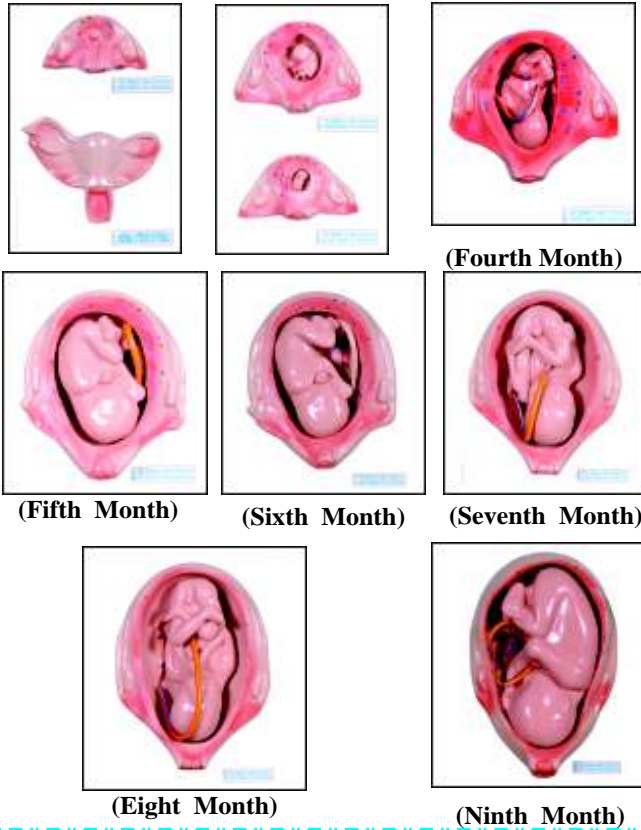
BCC 11.	Better health through awareness
BCC 12.	Risk factor for breast cancer
BCC 13.	Warning signs of breast cancer
BCC 14.	Breast cancer detection method
BCC 15.	Basic BSE method



BCC 15

Community Bag with all Articles as per INC syllabus
Midwifery Kit with all Articles as per INC syllabus

Am 183 Series Demonstration Model of Pregnancy



AM 79B Human Development of Embryo at End the 1st Month



Dbios

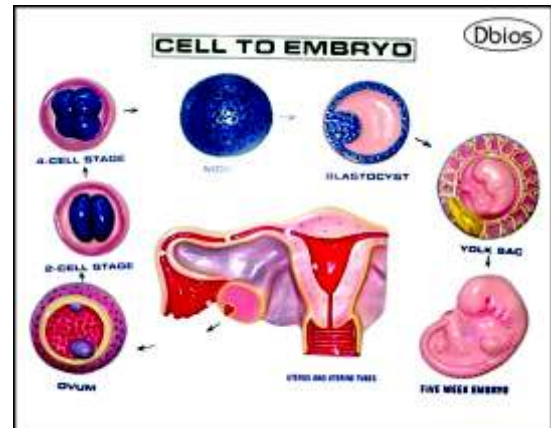
**Charts & Models available for Pathology,
Microbiology, Physiology, Forensic
& Community Medicine**

MCH
Models

Desh Biological Works

Am 83B Cell to Embryo

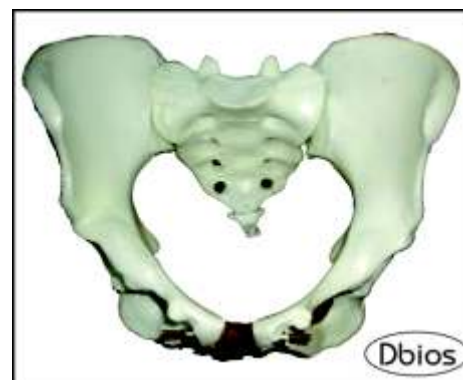
Size 16"x24"



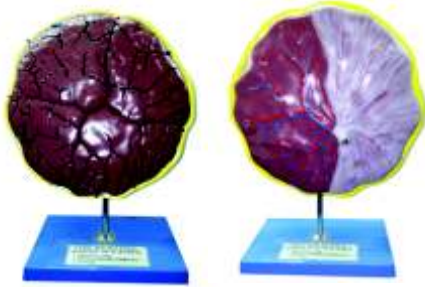
AM 79A Fertilization and Development of the Human Ovum Up to 3rd.



AM 98 Human Female Pelvis



AM-80C&D Fetal & Maternal Surface of Placenta in one Model



AM 498A Female Pelvis with Muscles



(Dbios)

IMP-258A Infant Skull



IMP-353B Stages of Fetus During Pregnancy



IMP 280B Female Inner Genital Organs



(Dbios)

AM 85 Uterus in 9th month (Full size fetus)



(Dbios)

AM 84A Demonstration Model of Childbirth (Set of 3)



(Dbios)

AM 70A Mammary Gland in Resting Period



AM 70B Mammary Gland in Lactation



AM 70C Ovary Models (8 Part)



IMP 353C Human Embryo



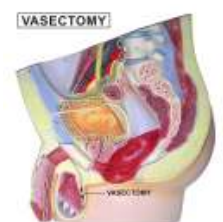
AM 96A Model of Condom



AM 96B Tubectomy



AM 96C Vasectomy



AM 80A Model of Placenta Enlarged



AM 97A Foetal Skull



AM 80C Maternal Placenta



AM 77 Human Spermatozoon



IMP 380B Fertilization Process



AM 53A Imported-Fetal Circulatory System

Size: Natural size.



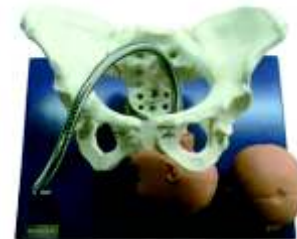
AM 98A OBST. Pelvic with Fetal Skull



Dbios-0100 Pelvis with Fetal Heads Model

Features :

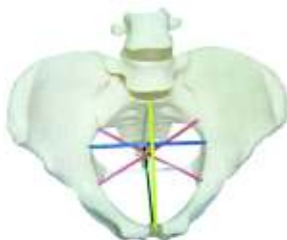
1. That can be observed during childbirth fetal relationship with the position of the pelvis.
2. Can be intuitive demonstration, declining, prone lexion, rotation, backstretch , reset and external rotation, fetal childbirth, etc. The whole process of delivery.
3. Can be used to demonstrate the use of forceps, when childbirth fetal attractor.



Dbios-0101 Pelvimetry Demonstration Model

Features :

1. Model for adult pelvis, real size, shortage of anatomical structures.
2. Show the pelvic cavity surface of three products: Pelvic entrance face, in the pelvis, pelvic exports
3. Including hip, the sacrum, sacral promontory, coccyx, ischial spine, sacroiliac joints, iliac shame promontory, toe bone joint, to 4, 5, lumbar structure, etc.



IMP 106A 24 weeks Embryo



IMP 106B 32 weeks Embryo



IMP 106C Infant with umbilical cord



IMP 106D One Month Baby



IMP 106E IMP. Rubber Baby



IMP 106T New born baby

TAIWAN MAKE



Dbios-0092
IUD Training Model

Features :

1. The good shape of the model makes the training clearly.
2. Normal and abnormal positions of uterus can demonstrate the uterine anteversion and retroversion



PACKAGE SIZE: 18cm*15cm*17cm
G.W.: 0.46KG

IMP 154 Uterus II

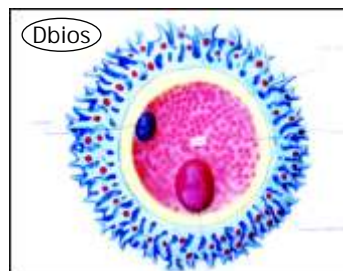
Features:

- Coronal section of uterus, ovaries, and fimbriae.
- Clear plastic window permits easy viewing of IUD.

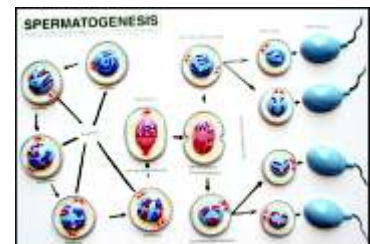
**IMP 155 Uterus**

Features:

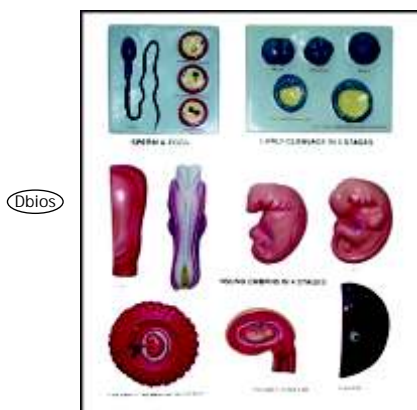
- Normal uterus.
- Clear plastic window permits easy viewing of IUD.
- Plastic window "tilts" open to permit removal of IUD.

**AM 89 Foetus Delivery Model with leather baby****AM 76 Human Ovum**
Size 16"x20"**AM 78 Spermatogenesis**

Dbios Size 16"x24"

**AM 83C Human Development Survey set**

Size 16"x24"



Ask for

Anatomy : Charts, Models & Slides

Physiology: Charts, Models

Biochemistry: Charts, Models

Community Medicine: Charts, Models
& Slides

Pathology: Charts, Models & Slides

Forensic: Charts, Models & Slides

Microbiology: Charts, Models & Slides

Pharmacology :Charts, Models

Obg & Gyane: Charts, Models

Dbios-0110

Male Condom Model

Features :

1. Mounted on a lucite stand
2. Penis is erect
3. Simulation of ejaculation

PACKAGE SIZE: 19cm*15.5cm*17.5cm

G.W.: 0.46KG



Dbios-0112

Male Catheterization Model

Features :

1. Simulate real urethral catheterization operation training, realistic genitalia can carry out real urethral catheterization and genital care operation;
2. Fixed on bracket, can be operated on table;
3. With water-proof shorts which can be worn outside of clothes to operate, suitable for a group of two students to



Dbios-0111

Female Catheterization Model

Features :

1. Simulate real urethral catheterization operation training, realistic genitalia can carry out real urethral catheterization and genital care operation;
2. Fixed on bracket, can be operated on table;
3. With water-proof shorts which can be worn outside of clothes to operate, suitable for a group of two students to practice.



Dbios-0115 NSV Model

Features :

1. Simulate an adult male genital structure realistically
2. Mainly for training vasectomy operation design



IMP 151 Multipurpose Male Care Simulator

Features:

- Full size male lower torso.
- Internal bladder for catheterization.
- Four interchangeable prostates depicting moderately enlarged benign prostate, prostate with two discreet nodules, prostate with easily palpable large mass, prostate with malignant invasive cancer.
- Realistic penis and two scrotal sacks; one scrotal sack is normal, the other contains tumors in each testicle.
- No Scalpel Vasectomy kit containing two removable scrotal skins, two testicles and two long vas assemblies that can be advanced as needed for NSV exercises.
- Rectum and colon containing benign and malignant masses easily visualized using an appropriate endoscope.



IMP 148 Advanced Patient Care Male Prostate Simulator

Features:

- 4 interchangeable modules depicting moderately enlarged benign prostate, a prostate with two discreet nodules, a prostate with an easily palpable large mass, and a prostate with malignant invasive cancer.
- Prostates individually mounted on clear plastic cards for easy placement and removal.
- Instruction manual.



IMP 149 Advanced Patient Care Male and Female Catheterization Simulator

Features:

- Complete catheterization training.
- Interchangeable, realistic male organ.
- Fully functional stomas connected to removable, replaceable internal tanks.
- Modular urethral valve to prevent fluid leakage.
- Instruction manual.



IMP 141 Breast Model with Interchangeable Nodules

This educational model comes with five different-sized lumps that can be inserted and removed from the back of the breast. Perfect for mammography and BSE motivation. Includes a carrying case and extra set of breast lumps. Sh. wt. 2 lbs.

IMP 142 BSE Multi-Type Model

Three breast model are mounted on one piece of heavy plastic - an average breast without lumps, a fibrocystic breast, and an average breast with lumps. 23"x11¾". Sh. wt. 13.69 lbs.



IMP 143 Nonsexual Breast Self-Examination (BSE) Testicular Self-Examination (TSE) Model

Designed to minimize embarrassment in mixed groups, this display features simulated breast tissue and a simulated scrotum molded in generic shapes. The models contain lumps that scrotum can be felt on both sides of display. 12"x 9". Sh. wt. 3.50 lbs.

IMP 158 Breast Palpation Simulator for Clinical Testing

Features:

- 7 interchangeable breasts demonstrating chronic mastitis, benign growth, carcinoma and the "orange skin" effect, giant sarcoma, scirrhus carcinoma, the lymphatic drainage system, and the movement of the mammary gland on the surface of the pectoralis major muscle.
- 1 normal breast.
- 1 breast cross section illustrating normal internal anatomy.
- Snap-on skin for easy placement of breasts.
- Mounted on smoked Lucite base.
- Instruction Manual.



Desh Biological Works

Models

Anatomy

A-86 Adult Leg Bone with & Ligaments



A-87 Adult Arm Bone Joints & Ligaments



IMP 1 Male Muscle Figure This model consists of 27 parts



IMP 284 MICRO Anatomy Kidney.

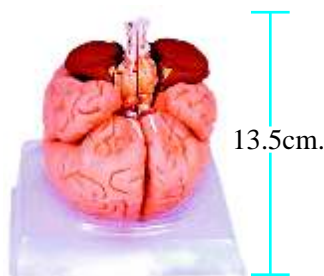


IMP 284

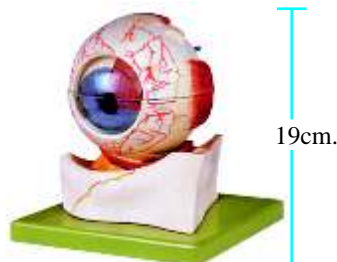
DC- 121 Unisex Torso
23 Parts 85 cm.



IMP 328 Brain



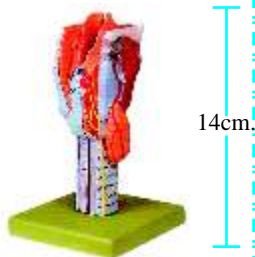
IMP 314 Eyeball
Separated into 7 parts.



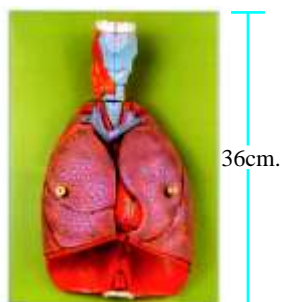
IMP 322A Spinal Cord in Spinal Canal



IMP 305 Larynx
Separated into 2 parts,



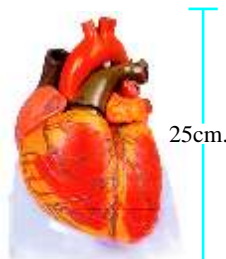
IMP 309 Heart, lung and Larynx



IMP 313 Anatomical Heart Model



IMP 312 Anatomical Heart Model
Separated into 3 parts,



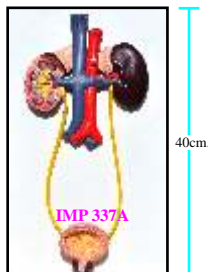
AM 65A Reproductive Male



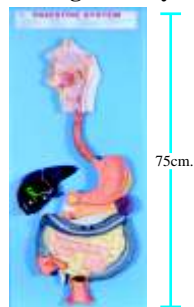
AM 66A Reproductive Female



IMP 337A Excretory System



IMP 309C Digestive System



IMP 333B Kidney, Nephron & Corpuscle.



IMP 352 Block Skin



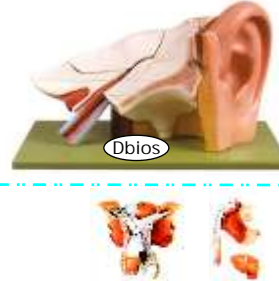
IMP 262A Teeth.



IMP-309B
Human Stomach.



IMP 317 Ear Model.



IMP 335 Male Genital
Organs.



IMP 332A Spleen, Pancreas
& Duodenum.



IMP 333C Kidney on Stand



IMP 336A Female Pelvis



IMP 337 Female Genital Organs.



IMP 126 Experience the worldwide best-selling
natural casts of human skeletons



A-80 Functional
Shoulder Joint



A-81 Functional
Hip Joint



A-82 Functional
Knee Joint



A-83 Functional
Elbow Joint



**AM103. DISARTICULATED HUMAN
SKELETON WITH SKULL**



A-84 Functional
Wrist Joint



A-85 Functional
Ankle Joint



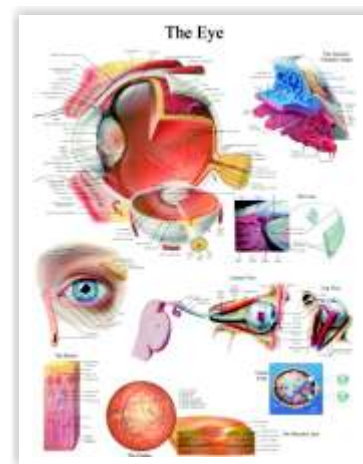
IMP 337B Anatomical Uterus

The model is dissected in sagittal sections, shows bladder, uterus, vagina, ureter & ovary
Features: 2 Parts.
Height 8cm.
Width 11cm.
Thickness 8.5cm.



Size 20"x26" Laminated & Fitted with Plastic Strip OR
Size 20"x26" Laminated & Framed on NU-Wood Board

- | | |
|---|----------------------------------|
| 1. Skeleton System. | 15. Stomach |
| 2. Muscular System (Showing different muscles of the body). | 16. Pancreas |
| 3. Joints and Ligaments. | 17. Spleen. |
| 4. Nervous System | 18. Small Intestine. |
| 5. Brain, | 19. Larger Intestine. |
| 6. Spinal Cord. | 20. Liver and Bladder. |
| 7. Cardio-vascular System. | 21. Kidney |
| 8. Respiratory System. | 22. Skin. |
| 9. Lungs. | 23. Ear. |
| 10. Trachea. | 22. Female Reproductive System. |
| 11. Larynx. | 24. Menstrual Cycle. |
| 12. Digestive System. | 25. Male Reproductive System. |
| 13. Oral Cavity. | 26. Endocrine Glands. |
| 14. Teeth. | 27. Eye. |
| | 28. Internal Organs of the Human |



EYE

Dbios Human Rexine Charts (57 Charts)

Size : 30" X 40"

SYSTEMS OF HUMAN BODY

- CH 551 Muscular System
CH 551A Muscular Back View
CH 552 Skeleton-I (Entire skeleton, vertebral column & skull)
CH 552A Skeleton (Back view)
CH 553 Nervous System
CH 554 Autonomic Nervous System
CH 555 Arterial System
CH 556 Venous System
CH 557 Lymphatic System
CH 558 Digestive System
CH 559 Respiratory System
CH 560 Excretory System
CH 561 Female Reproductive System
CH 562 Male Reproductive System
CH 563 Endocrine System
CH 597 Human Immune System

STRUCTURES/ORGANS

- CH 564 Heart
CH 565 Brain

- CH 566 Spinal Nerves
CH 567 Skeleton-II (Vertebrae, Sacrum & Thoracic Cage)
CH 568 Skeleton III (Girdles & Limbs)
CH 569 Vertebral Column
CH 570 Human Skull
CH 571 Head & Neck
CH 572 Eye
CH 573 Ear
CH 574 Ear, Nose & Throat
CH 575 Skin
CH 576 Nephron
CH 577 Shoulder & Elbow
CH 578 Hand & Wrist
CH 579 Hip & Knee
CH 580 Foot & Ankle
CH 581 Teeth

STRUCTURES/ORGANS

- CH 582 Human Liver
CH 583 Kidney

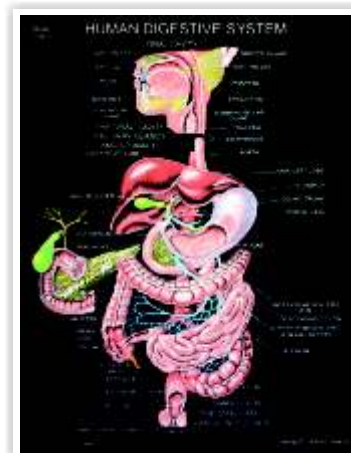
- CH 584 Pregnancy & Birth
CH 585 Pharynx & Larynx
CH 586. Embryo Development
CH 587. Human Anatomy
CH 587A. Human Blood Cells.
CH 588 Nose
CH 589 Tongue
CH 590 Human Joints
CH 301 The Cell
CH 592 Menstrual Cycle
CH 593 Spinal Cord
CH 594 Sense organs
CH 595 Muscles
CH 596 Bones & Cartilage
CH 307 Gametogenesis
CH 308 Fertilization
CH 309 Oogenesis
CH 310 Spermatogenesis
CH 10 DNA
CH 11 RNA

Dbios Rexine Charts

Size : 30" X 40"

- | | |
|------------------------------------|-------------------------------------|
| CH 23 Cardiovascular Disease | CH 37 Ascaris Lumbricoides L.C |
| CH 24 Malaria | CH 38 Liver Fluke L.H. |
| CH 25 Tuberculosis | CH 39 Ancylostoma Duodenale L.C. |
| CH 26 Cholera | CH 40 Deficiency Disease |
| CH 27 Typhoid | CH 41 Vectors of Human Disease |
| CH 28 Dysentery | CH 42 Colour Blindness & Hemophilia |
| CH 29 Diarrhoea | CH 43 Prevention of Disease |
| CH 30 Filariasis | |
| CH 31 Leprosy | |
| CH 32 Pathogenic Protozoa | |
| CH 33 Entamoeba L.C. | |
| CH 34 Aids | |
| CH 35 Vermicularis Entrobilus L.H. | |
| CH 36 Malarial Parasite L.H. | |

Also Available
All Deptt. Medical
Charts & Models



CH 558

Website : www.dbios.org

e-mail : desh@dbios.org
deshbiological@gmail.com

Size 20"x26" Laminated & Fitted with Plastic Strip OR
Size 20"x26" Laminated & Framed on NU-Wood Board

PEDIATRICS

PE-633 Absence Seizure (Petit Mal Seizures)
 PE-959 Appendicitis
 PE-909 Asthma
 PE-845 Attention Deficit Hyperactivity Disorder
 PE-639 Autism
 PE-847 Bed Wetting (enuresis)
 PE-645 Cerebral Palsy (cp)
 PE-81 Chickenpox (varicella)
 PE-849 Child Abuse
 PE-825 Cleft Lip And Palate
 PE-851 Colic
 PE-853 Croup (laryngotracheobronchitis)
 PE-855 Cystic Fibrosis (cf)
 PE-87 Diaper Rash
 PE-89 Discoid Lupus Erythematosus
 PE-653 Down Syndrome (Trisomy 21; Mongolism)
 PE-511 Ear Ache, Child (otitis Media)
 PE-289 Encopresis, Child (Fecal Incontinence)
 PE-515 Epididymitis
 PE-655 Epilepsy (Seizures)
 PE-657 Fever Seizures, Child (Febrile Seizures)
 PE-97 Fifth Disease
 PE-659 Friedrich's Ataxia
 PE-661 Generalized Tonic-clonic Seizures
 PE-623 Glomerulonephritis
 PE-187 Gynecomastia
 PE-103 Hand-Foot-Mouth Disease (HFMD)
 PE-451 Hemophilia
 PE-105 Henoch-schonlein Purpura (Allergic Purpura; Anaphylactic Purpura), Child
 PE-531 Herpangina
 PE-983 Hypospadias
 PE-459 Jaundice, Newborn
 PE-945 Juvenile Rheumatoid Arthritis (JRA)
 PE-947 Kawasaki Disease (KD)
 PE-543 Lice (pediculosis)
 PE-857 Marfan's Syndrome

PE-115 Measles (Rubeola)
 PE-553 Meningitis
 PE-555 Mononucleosis
 (Mono; Kissing Disease)
 PE-557 Mumps
 PE-629 Nephrotic Syndrome (Nephrosis)
 PE-859 Obesity (Weight Control), Child
 PE-829 Oral Health Care (Dental Care)
 PE-787 Osgood-schlatter Disease
 PE-687 Partial Motor Seizures
 PE-933 Pertussis (Whooping Cough)
 PE-989 Phymosis, And Paraphymosis
 PE-571 Pinworms, Child
 PE-335 Pyloric Stenosis
 PE-587 Rheumatic Fever
 PE-137 Scabies
 PE-139 Scarlet Fever, Child
 PE-805 Scoliosis, Child
 PE-809 Slipped Femoral Epiphysis, Child
 PE-727 Strabismus (Lazy Eye)
 PE-61 Tetralogy of Fallot
 PE-843 Tonsillitis
 PE-861 Tourette's Syndrome
 PE-229 Turner's Syndrome
 PE-995 Undescended Testicle (Cryptorchidism)
 PE-65 Ventricular Septal Defect (VSD)
 PE-863 Vitamin D Deficiency
 (Rickets; Osteomalacia)
 PE-343 Wilson's Disease

PSM 51 Apgar Score Chart



AM 224



PE 945

PEDIATRICS Disease model s

AM 207 Small Pox
 AM 208 Chicken Pox
 AM 210 Mumps
 AM 224 Measles
 AM 230 Polio myelitis
 AM 235 Tonsil
 AM 241 Goiter
 AM 244 Diphtheria
 AM 247 Scurvy
 AM 250 Kwashiorkor

Nutrition Charts

Size 20"x26" Laminated & Fitted with Plastic Strip **OR**
Size 20"x26" Laminated & Framed on NU-Wood Board

- 9776 Risk of obesity.
- 9779 Weight Control.
- 9894 Keys to Healthy Eating.
- CH1352. Daily allowance of Vitamins (Infants, Children, Adolescent, Men, Women).
- CH 1352A Recommended Dietary allowances For Indians.
- CH1353. Daily Allowance of Nutrients.
- CH 1353A Some Nutrient-rich Foods-I.
- CH 1353 B Some Nutrient-rich Foods-II.
- CH 1353C Some Nutrient-rich Foods-III.
- CH1354. Balance Diet for Preschool Children (1 to 6years).
- CH 1354a Balanced Diet For Adult Man (Sedentary).
- CH 1354B Balanced Diet for Adults - (Sedentary).
- CH 1354C Approximate Calorific Value Of Nuts, Salads And Fruits.
- CH 1354G Approximate Calorific Value Of Some Cooked Preparations.
- CH 1354D Vegetables And Fruits With High Calorie Value (>100 kcal).
- CH 1355. Balance Diet for School Children (7 to 18 years).
- CH1356. Balance Diet for Normal Pregnant (Lactating Women).
- CH 1356A Portion Sizes And Menu Plan
- CH1357. Balance Diet for old people (over 60 years)
- CH1358. Height weight Table for Normal Adults (Man & Women)
- CH1359. Reducing diets & weight maintenance diet for Adults.
- CH1360. Nutritive Value of Common Indian Recipes.
- CH 1360A Sample Meal Plan For Adult Man (Sedentary).
- CH 1360B Sample Meal Plan For Adult Woman (Sedentary).
- CH 1361. Recipes for Balance diets for Preschool Children/ Pregnant & Nursing Women.
- CH1362. High & Low Calorie diets for Adults.
- CH1363. Diet for diabetic of Varying Ages with Normal Body weight. (Male & Female)
- CH1364. Diet & Daily menu for an adult suffering from High Blood Pressure.
- CH1365. Diet & Daily menu for an adult suffering from Renal Calculi.
- CH1366. Diet & Daily menu for an adult suffering from Chronic Gout.
- CH 1367. Diet & Daily menu for an adult suffering from high Fever.
- CH 1368. Diet & Daily menu for an adult suffering from Constipation.

- CH 1370. Fibers
- CH1370A Vitamins Sources & Deficiency
- CH 1371. Fats
- CH1372. Proteins
- CH 1373. Minerals
- CH 1374. Carbohydrates
- CH 1375 Importance Of Diet During Different Stages of Life
- CH 1377 Exercise And Physical Activity
- CH 1378 Energy Costs Of Physical Activities
- CH 1382 Drinking Water Standards
- CH 1383 WHO New Growth Standards Standard Deviation
- CH 1384 B.M.I. Anthropometric Standards



CH 1354G



CH 1370A

First Aid Charts

Size 20"x26" Laminated & Fitted with Plastic Strip **OR**
Size 20"x26" Laminated & Framed on NU-Wood Board

- | | |
|--|---------------------------------------|
| 6850 Bite (Snake & Animal) | 6997 Fracture |
| 6880 How poisons Affect The Body | 6998 Roller Bandages |
| 6885 Action In An Emergency | 6999 Triangular Bandages |
| 6888 Burns | 7000 Drowning |
| 6900 Poisoning (Drug & Alcohol) | 7001 Inhalation of Fumes |
| 6901 Poisoning (Food Plant and Fungi) | 7002 Treatment of some common poisons |
| 6920 Management of Asthma | |
| 6925 Symptoms & signs of acute alcohol poisoning | |
| 6950 Types of Wounds | |
| 6989 Choking Adult | |
| 6990 Choking Child | |
| 6991 Choking Infant | |
| 6995 CPR Adult | |
| 6996 CPR Children | |

Also Available
All Deptt. Homeopathic/Ayurvedic
Medical Charts & Models



6997

Models on Hygiene & Public Health

- AM 167. Insanitary Well
- AM 168. Sanitary Well
- AM 169. Step Well
- AM 170. Deep Well
- AM 171. Deep Tubewell
- AM 172. Slow Sand Filter
- AM 173. Rapid Sand Filter
- AM 174. Pastuer's Chamber Sand Filter

Soil Sanitation

- AM 175. Berkefeld Filter
- AM 176. PIT Laterine (Dug well lateriane)
- AM 177. Bore Hole Laterine
- AM 178. Trench Laterine
- AM 178A. Sanitary Laterine
- AM 179. Septik Tank Laterine
- AM 180. House Drainage System
- AM 181. Activated Sludge Process
- AM 182. Incinerator (Beehive type)
- AM 183. RCA Laterine

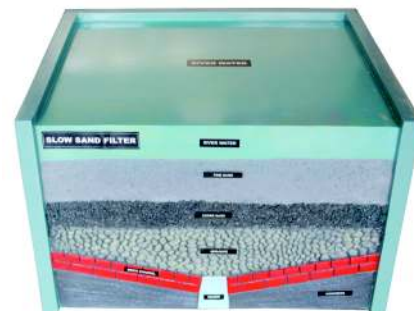
OR



AM 168

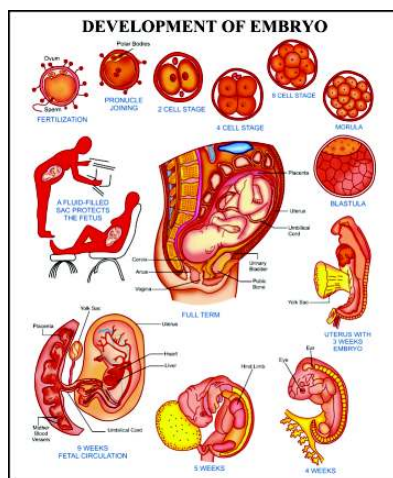


AM 173

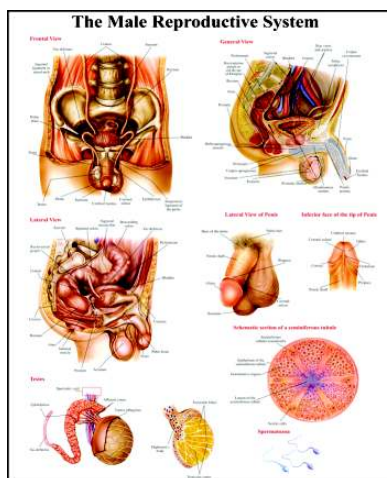


AM 172

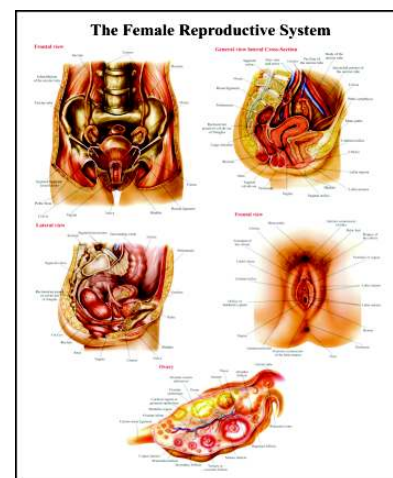
Charts



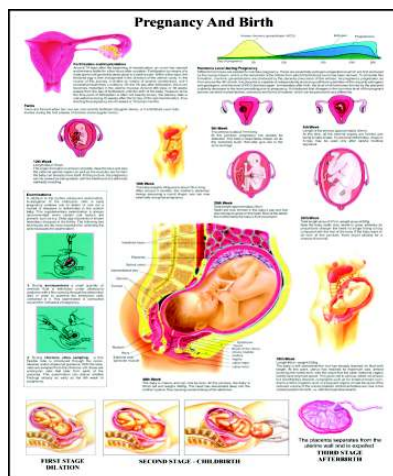
DEVELOPMENT OF EMBRYO



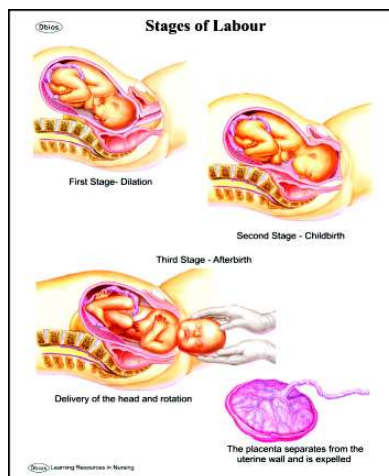
THE MALE REPRODUCTIVE SYSTEM



THE FEMALE REPRODUCTIVE SYSTEM



PREGNANCY AND BIRTH



STAGES OF LABOUR

Midwifery Kit with article
Community Bag with article
As per INC

