

Customised Charts

Size 20"x30" Laminated & Mounted Framed on Board

20"

30"

4"



College
Logo
& Name

Dbios
CH BOSC

Details of Viscera and other arteries

A. Usual viscera to be preserved in all cases of death due to poisoning or suspected poisoning -

1. Stomach with its full content.
2. Half of liver or 500 gms of liver, whichever is more. When the weight of the liver is less than 500 gms then, the whole of the liver has to be preserved.
3. A loop (about 1') of the small intestine, from the upper part.
4. Half of each kidney. Identical longitudinal half of each kidney should be preserved instead of preserving one kidney or transverse section of the kidneys, because if one kidney or a part of one kidney was nonfunctional before death, preservation of that part alone may be useless for the purpose of detection of poison. If identical longitudinal halves of each kidney is preserved then that is to a great extent avoided.
5. Some recommend preservation of spleen as a routine measure. But from practical point of view, when other organs mentioned above are preserved, preservation of the spleen does not add much to the advantage.
6. In some particular types of poisoning, apart from the usual viscera noted above, some specific organ, tissue or material may be required to be preserved, e.g.
 1. Blood should be preserved in all cases where poisons act after being absorbed in the system. Quantity of blood required to be preserved - 100 ml. It should be preserved from the chamber of the heart or the inferior vena cava.
 2. Urine should be preserved in all cases where blood is required to be preserved. If urine is available in the bladder. While collecting urine it should be seen that it is not contaminated with blood. For collection, the urine can either be syringed out or can be spooned out after dissecting the anterior wall of the bladder. Quantity of the urine to be collected - 100 ml or the whole amount of the urine present in the bladder.
 3. Parts of both the lungs should be preserved in all cases of poisoning with volatile poisons or poisons which are partly excreted with the expired air.
 4. The whole of the heart should be preserved in case of suspected poisoning with cardiac poisons.
 5. The whole of the brain should be preserved in case of suspected poisoning with cerebral poisons.
 6. Spinal cord should be preserved in case of use of spinal poison like strychnine.
 7. In suspected heavy metal poisoning cases, particularly in case of arsenic or lead poisoning, bone should be preserved.
 8. Hair should be preserved in case of poisoning with arsenic or copper.
 9. Nails should be preserved in case of poisoning with arsenic.
 10. Uterus and vagina should be preserved in case of use of abortifacient drugs either locally or systemically, when the drug had direct action on the uterus.
 11. Skin-scrap - From an area stained with a suspected poison.
 12. Skin, subcutaneous tissue and muscle - from the site of injection of a suspected poison
 13. Suspected stained area of the dress, suspected packet of poison, strips of tablet recovered from the pocket of the dress of the deceased.

Lower Gastrointestinal Anatomy

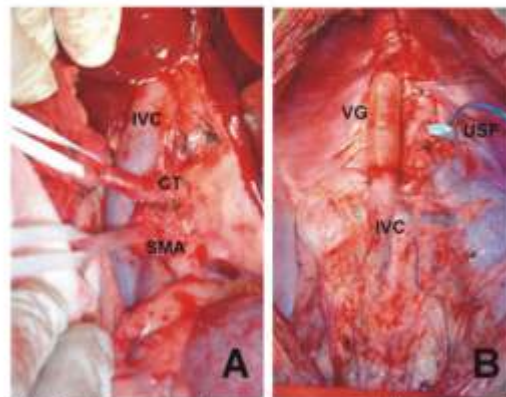
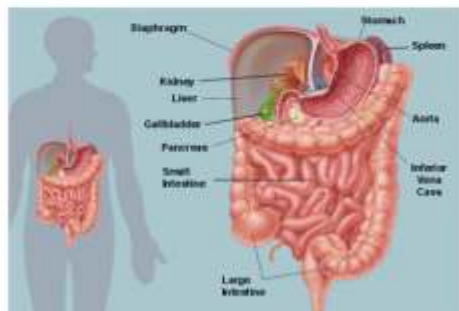


FIGURE 1 - (A) The celiac trunk and superior mesenteric artery (CT and SMA, respectively) were encircled with umbilical tape before total abdominal exenteration. (B) Final aspect after en bloc resection of all abdominal organs. The vascular graft (VG) is interposed between suprahepatic and infrahepatic inferior vena cava (IVC). The ultrasonic flowprobe (USFP) can be seen around the supracoeliac aorta.

Dbios

w.e.f. Mar. 1, 2017

FMT LIST No. 8

Educational Aids

on FORENSIC Medicine & Toxicology



Forensic Models

FORENSIC MODELS MADE FROM GLASS FIBER-UNBREAKABLE MATERIAL AND WASHABLE. THESE MODELS ARE DESIGNED TO FUNCTION AS REFERENCE MATERIAL TO HELP YOU INCREASE YOUR KNOWLEDGE ABOUT MEDICAL JURISPRUDENCE AND TOXICOLOGY.

**DFM 07****DFM 9A****IDENTIFICATION**

- DFM 02 Tattoo Marks over the forearm.
 DFM 03 Types of Finger Prints: Set of four models of (a) Arch, (b) Loop, (c) Whorl and (d) composite types.
 DFM 04 Occupational Marks: Bakers, Tailor, Lead line.

POSTMORTEM CHANGES

- DFM 07 Cadaveric Spasm (Hair).
 DFM 7A Marbling of skin at end of 1st week
 DFM 08 Postmortem Changes: Marbling of the skin due to growth of the organism of decompositions from the abdomen into the system of veins entering of the root of the neck and abdomen.
 DFM 08A Putrification: Showing gaseous swelling, eye ball, Tongue, protrude giving, frog like appearances.
 DFM 09 Adipocere Forearm (Stiffing & Swelling Fats).
 DFM 09A Adipocere: Head & Neck showing the adipocere formation in subcutaneous fat, skin softened and rotted away.
 DFM 10A Postmortem Staining portion of Body.
 DFM 10B Colour Changes in Bruise set of 2 models.
 DFM 11 Mummification: Soft part shrivel up, But remains natural appearance.
 DFM 11B Adipocere :- Model of Hand showing Multiple Areas of yellow colours showing Fat & Normal Tissues
 DFM 11A Postmortem Lividity on the Back of the Body

INJURIES

- DFM 12 Abrasions: Knee (Fell on Road).
 DFM 12A Abrasion: on Arm by Teeth.
 DFM 12B Throttling :- Strangulation by throttling
 DFM 12C Abrasion on face
 DFM 13 Blunt Injuries: Models of face showing ragged splint wounds across brow crushing the skull with clubbed stick.
 DFM 14 Bruise: Portion of face showing the swelling of the left eye-brow following fall.
 DFM 14A Bruise Shoe Heel.
 DFM 14B Bruises on Hand :- Showing multiple Bruises
 DFM 14C Multiple Bruises on Foot

Also available Charts, Models & Slides

Pathology Department

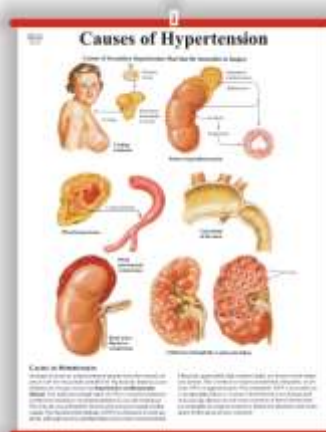
Pathology Models 70

Charts:- 476

Histopathology charts :- 250

Histopathology Slides :- USA Set of 100

Scientist Portraits 50



PM 5
SARCOIDOSIS

UNBREAKABLE FIBRE GLASS



DFM 32



DFM 35

- DFM 16 Axe Wound: Models of head showing multiple axe wounds of the head.
 DFM 17A Head Injury Skull (Road Accident).
 DFM 18 **Incised wound**: Model of neck showing the tentative **incised wounds** of the throat of suicidal character too superficial to cause harm.
 DFM 19 Murder by Deep Wound: Model of head and neck depicting deep wounds parallel to but at some distance from the fatal one indicative of **homicide**.
 DFM 19A Clean cut wound :- Showing Injury with sharp weapon
 DFM 20 Stab Wound (Abdomen).
 DFM 20A Laceration of Scalp on Head
 DFM 20B Multiple Lacerated wounds by Blast on Back
 DFM 20C Perforated wound on Head
 DFM 21 Homicidal Wounds of Throat: Model of head and neck showing the **incised wounds** of the throat.
 DFM 21A Protective Wounds: Model of hand depicting protective wounds caused by the knife slipping through the right hand of the victim attempting to grapple with an assailant.
 DFM 21B Defense wound :- Multiple Incised wound in line
 DFM 21C Murder by Stabbing: Model of back of person depicting stabbed wounds one of which having been broadened by rocking of the knife.
 DFM 22 Exit Hole in Skull by Bullet: Set of two models for (i) Internal and (ii) External views of exit hole made in skull vault by bullet passing up, through brain.
 DFM 22A Infanticide: Model of head of a child which was beaten on a wooden floor causing splitting of skin and abrasions, on cheek.
 DFM 23A Puncture Wound on Chest: Perforated entry wound.
 DFM 24 Homicidal Gun Shot Wound: Model of Fore head showing a shot gun wound of near discharge in case of Homicide.
 DFM 25 Entry and Exit Wound: Set of two models for entry and exit wounds from discharge of 32 revolver, muscle in contract with skin.
 DFM 26 Healing of Wound: Set of 5 models of stages of (1) first 12 hours, (2) 24 hours, (3) 36 hours, (4) 48 hours, (5) 3-5 days .
 DFM 27 Head Injury Depressed Frontal Fracture.
 DFM 29 Nose Bitten off by Teeth.
 DFM 31 Electric Burn: Hand showing the caused electric burn by live wire contact.
 DFM 31A Electric Burn: Portion of body depicting electric burn caused by repeated application of live two pin plug.
BURNS
 DFM 32 Scalds: Hand fell in Boiling ghee.
 DFM 33A Lysol Burns: Model of face depicting lysol burns of the lips running down over the chin.
 DFM 33B Burns of face from a kerosene Oil lamp.
 DFM 34 Degrees of Burns: Set of four models showing degrees.

Also available Charts, Models & Slides

Anatomy Department

Human Anatomy Models 150

Embryology Models 80

Histology Models 15

Charts:- Anatomy, Embryology & Histology 600

Slides :- Histology USA Set of 100

Histology German Set of 62

Skeleton:- Articulated & Loose Bones

Scientist Portraits 90





DFM 36A



DFM 47

VIOLENT ASPHYXIAL DEATHS

- DFM 35 Asphyxial Petechiae: Model of face depicting asphyxia by suffocation following stuffing of the mouth and throat, minute asphyxial petechiae are present over the brow and face.
- DFM 35A Smothering :- Multiple Bruises on the inner Aspect of upper limb
- DFM 36A **Suicidal Hanging:** Model of head and neck depicting the pattern of rope wound.
- DFM 38 **Strangulation:** Showing Ligature Mark by cane wound round the neck.
- DFM 38A **Hanging Double Loop :** Head and neck depicting Double loop of wire-rope wound twice round the neck.

POSTMORTEM ARTEFACTS

- DFM 40A Postmortem Lividity: Over face causing dark stain except where prevented by pressure.

EXHUMATION

- DFM 41 Drowning:- Ante-Mortem Drowning
- DFM 41A Washerman's foot:- Wrinkling can be seen in both ante-mortem and postmortem drowning

POISONS & POISONING

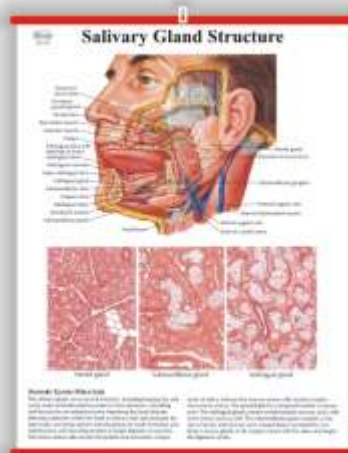
- DFM 43A Stomach poisoning by nitric Acid
- DFM 43B Stomach Poisoning by Sulphuric Acid.
- DFM 43C Stomach Poisoning by Oxalic Acid.
- DFM 43D Arsenical Poisoning: Portion of body showing melanosis pigmentation of skin in chorionic arsenical poisoning.
- DFM 43E Stomach Poisoning: Caustic Potash.
- DFM 43F Stomach Poisoning: Lysol.
- DFM 43G Stomach Poisoning by Hydrochloric Acid.
- DFM 43H Stomach poisoning by copper sulphate.

RAPE MODEL

- DFM 44 Rape: Head and neck of a girl with attempted strangulation marks on neck.
- DFM 44A Types of Hymens: Set of six models of (1) Semilunar or crescentic, (2) Fimbriate, (3) Circular, (4) Septate, (5) Two lateral lacerations and (6) Circular torn in several places-of hymens.
- DFM 47 The Typical Breast of a Virgin.
- DFM 47A The Slightly pendulous breast of recently married woman.

Physiology Department

Physiology Models 45
Charts 191
Scientist Portraits 55



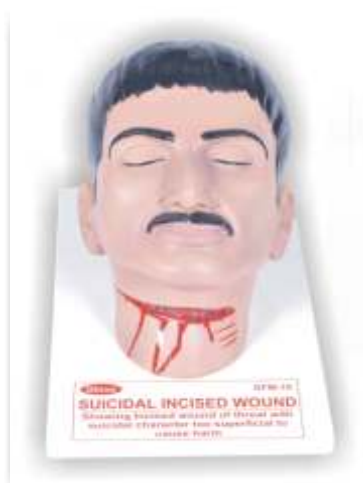
DIGESTION OF PROTEIN
PHM 6 Rs. 8500/-

UNBREAKABLE FIBRE GLASS

NEW ADDITION



DFM 43B



DFM 18 (3D)

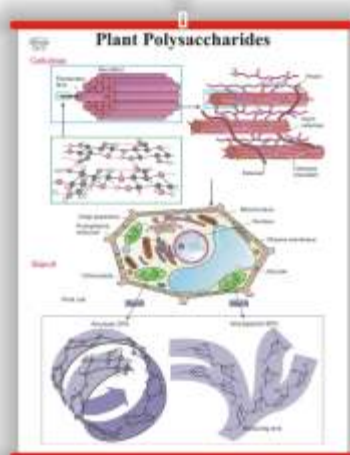
- DFM 75 The wound in jaw.
- DFM 76 The wound in abdomen with small intension evisceration.
- DFM 77 Opened fracture of right hand (including parenchyma laceration, fracture and bone tissue exposure).
- DFM 78 Burns in left forearm 1,2,3rd Degree
- DFM 79 Diabetic foot

3D MODELS ON STAND

- DFM 12 (3D) Abrasions: Knee (Fell on Road).
- DFM 12B (3D) Throttling :- Strangulation by throttling
- DFM 12C (3D) Abrasion on face
- DFM 14B (3D) Bruises on Hand :- Showing multiple Bruises
- DFM 14C (3D) Multiple Bruises on Foot
- DFM 18(3D) Suicidal incised wound on throat
- DFM 19A(3D) Clean cut wound :- Showing Injury with sharp weapon
- DFM 20A(3D) Laceration of Scalp on Head
- DFM 20C (3D) Perforated wound on Head
- DFM 21(3D) Entry & Exit wound on skull by bullet
- DFM 21B (3D) Defence wound :- Multiple Incised wound in line
- DFM 24(3D) Entry & Exit wound on Head by Revolver, case of suicidal
- DFM 25A(3D) Entry & Exit wound on chest by Gun distance app. 5 yards
- DFM 31 (3D) Electric Burn: Hand showing the caused electric burn by live wire contact.
- DFM 35A (3D) Smothering :- Multiple Bruises on the inner Aspect of upper limb
- DFM 41 (3D) Drowning:- Anti-Mortem Drowning
- DFM 41A (3D) Washerman's foot:- can be seen in both ante-mortem and postmortem drowning

Bio-Chemistry Department

Bio-Chemistry Models 15
Charts 252
Scientist Portraits 75

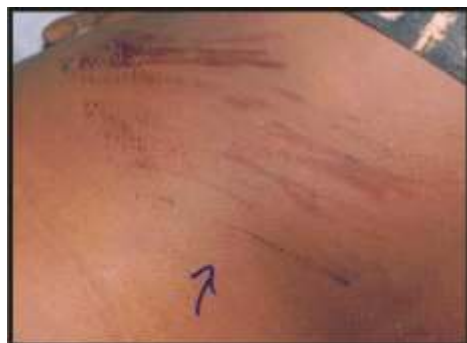


DBCM 17 Protein Structure

Size : 20"X26"

Laminated & Fitted with plastic strips
Laminated & Mounted on Board

58 Digital Photographs



GRAZED ABRASION



ADIPOCERE



BITE MARK



MULTIPLE BRUISES ON BACK

- FCH 01. ABRASION:- GRAZED AND IMPRINT
- FCH01A ABRASION:- MULTIPLE
- FCH01B ABRASION:- CONTUSED
- FCH01C ABRASION:- PRESSURE
- FCH01D ABRASION:- PARTIALLY HEALED
- FCH01E ABRASION:- ANT BITE MARK
- FCH 02. ABRUS PRECATORIUS
- FCH 03. ADIPOCERE
- FCH 04. BITE MARK
- FCH 05. BRUISE
- FCH 06. BURNS: EPIDERMAL AND DERMAL
- FCH 06A BURNS:- GRANULATION TISSUE
- FCH 06B BURNS:- CHARRED BODY
- FCH 07. CALTROP
- FCH 08. COMMINUTED FRACTURE OF SKULL
- FCH 09. DEFENSE WOUND
- FCH 10. DHATURA
- FCH 11. DHATURA, CHILLY SEEDS
- FCH 12. DIFFERENT AGES OF BRUISES
- FCH 13. ELECTRIC BURN MARK
- FCH 14. EXTRA CRANIAL HEMORRHAGE
- FCH 14A DEPRESSED COMMINUTED FRACTURE
- FCH 14B BURST FRACTURE
- FCH 14C PONTINE HEMORRHAGES
- FCH 14D SUBDURAL HEMORRHAGES
- FCH 15. EXTRA DURAL HAEMATOMA
- FCH 16. FIRE ARM INJURY
- FCH 17. FRACTURE SKULL
- FCH 18. HANGING
- FCH 18A INCOMPLETE ATYPICAL HANGING
- FCH 19. HOMICIDAL, SUICIDAL CUT THROAT INJURY
- FCH 20. HUMAN BLOOD, FROG BLOOD
- FCH 21. HUMAN HAIR, ANIMAL HAIR
- FCH 22. HUMAN SEMEN
- FCH 23. INCISED WOUND
- FCH 23A CHOP WOUND
- FCH 23B STAB WOUND
- FCH 24. LACERATED WOUND
- FCH 24A MULTIPLE LACERATION
- FCH 25. MAGGOTS
- FCH 26. MECHANISM OF INJURIES IN ROAD TRAFFIC ACCIDENTS
- FCH 27. PETECHIA HEMORRHAGES IN WHITE MATTER
- FCH 28. PHYSIOLOGY OF RIGOR MORTIS
- FCH 29. POSTMORTEM ARTIFACTS
- FCH 30. POSTMORTEM LIVIDITY
- FCH 30A POSTMORTEM BLISTERS
- FCH 31. PUTREFACTION BLOATING FEATURES ALONG WITH MAGGOTS
- FCH 31A PUTREFACTION DISCOLORATION
- FCH 31B PUTREFACTION :- MARBLING OF SKIN
- FCH 32. RICINUS COMMUNIS
- FCH 33. SKELETONIZED
- FCH 34. SNAKES
- FCH 35. STAB WOUNDS
- FCH 36. STRANGULATION
- FCH 37. STRYCHNOS NUX VOMICA
- FCH 38. SUBARACHNOID HEMATOMA
- FCH 39. SUBDURAL HEMATOMA
- FCH 40. TRAUMATIC ASPHYXIA
- FCH 41. CADAVERIC SPASM

Size : 20"X26"

Laminated & Fitted with plastic strips
Laminated & Mounted on Board

All Charts Also Available Size: 30"x40"

Laminated & Fitted with Plastic Rollers

LEGAL PROCEDURES IN MEDICO - LEGAL CASES

- CH 778 TYPE OF MEDICAL EVIDENCES
- CH 778A IPCS PERTAINING TO MEDICAL PRACTICE
- CH 779A THE DECLARATION OF GENEVA
- CH 779B CONDUCT & DUTIES OF DOCTOR IN THE WITNESS BOX
- CH 779C NEW DUTIES OF A MEDICAL OFFICER IN CASE OF SUSPECTED POISONING
- CH 779D NEW CONSUMER PROTECTION ACT (C.P.A.)
- CH 781. { DIFFERENCE BETWEEN POLICE & MAGISTRATE / CORNER'S INQUEST
DIFFERENCE BETWEEN CORNER'S & JUDICIAL MAGISTRATE'S COURT } **IN ONE CHART**
- CH 782. DIFFERENCE BETWEEN DYING DECLARATION & DYING DEPOSITION

IDENTIFICATION OF AN INDIVIDUAL

- CH 783. MORPHOLOGICAL FEATURES OF THE THREE PRIMARY RACES CAUCASIANS, MONGOLIANS & NEGROES
- CH 783A USES OF DNA FINGERPRINTING IN IDENTIFICATION
- CH 784. IMPORTANT DATA FOR IDENTIFICATION OF PERSON
- CH 785. DETERMINATION OF SEX FROM PHYSICAL / MORPHOLOGICAL FEATURES (PRIMARY & SECONDARY SEX FEATURES)
- CH 786. AGES OF ERUPTION OF TEETH
- CH 787. DIFFERENCE BETWEEN TEMPORARY & PERMANENT TEETH
- CH 788. SEX DIFFERENCE FEATURES IN SKULL
- CH 790. SEX DIFFERENCE FEATURES IN MANDIBLE
- CH 791. SEX DIFFERENCE FEATURES IN SACRUM
- CH 792. SEX DIFFERENTIATING FEATURES IN ARTICULATED PELVIS
- CH 793. DIFFERENCE BETWEEN MANDIBLE IN INFANCY, ADULT & OLD AGE
- CH 794. DIFFERENCE BETWEEN HUMAN & ANIMAL HAIR
- CH 795. ESTIMATION OF AGE

IMPORTANCE OF AGE

- CH 797. MEDICO - LEGAL IMPORTANCE OF AGE
- CH 798. AGE OF THE FOETUS
- CH 799. USE OF DNA IDENTIFICATION & OTHER FORENSIC PRACTICES
- CH 799A AGES OF APPEARANCE AND FUSION OF OSSIFICATION CENTERS OF DIFFERENT BONES

IDENTIFICATION FROM TRACE SUBSTANCES & THEIR OTHER EVIDENT VALUES

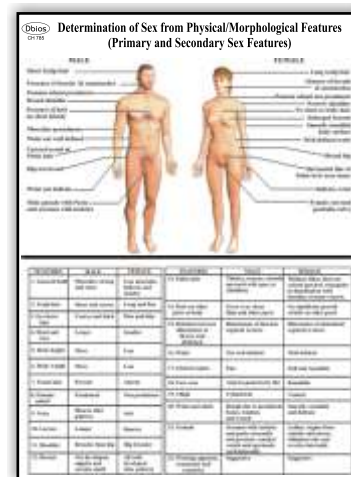
- CH 800. INTERPRETATION OF ABO GROUPING TEST FOR UN KNOWN CELL & SERUM
- CH 800A ANTIGEN AND ANTIBODIES OF ABO GROUP
- CH 801. ABO PHENOTYPE & GENOTYPE RELATIONSHIP BETWEEN PARENTS & CHILDREN
- CH 802. MN PHENOTYPE & GENOTYPE RELATIONSHIP BETWEEN PARENTS & CHILDREN

DEATH AND POST MORTEM CHANGES

- CH 803. DIFFERENCE BETWEEN BRUISE & POSTMORTEM STAINING
- CH 803A ENUMERATING CAUSES OF SUDDEN DEATH
- CH 803B ENUMERATING SIGNS OF DEATH
- CH 803C TESTS TO DETERMINE STOPPAGE OF CIRCULATION IN CASES OF DEATH
- CH 803D CHRONOLOGICAL SEQUENCE OF PUTREFACTIVE CHANGES OCCURRING IN THE TEMPERATE RE
- CH 803E PUTREFACTIVE CHANGES OCCURRING AT DIFFERENT PERIODS OF TIME IN A BODY SUBMERGED
- CH 803F. GORDON'S CLASSIFICATION OF DEATH
- CH 804. DIFFERENCE BETWEEN CONGESTION & POSTMORTEM STAINING IN ORGANS
- CH 805. DIFFERENCE BETWEEN ANTI-MORTEM & POST MORTEM WOUND
- CH 805A PROCESS OF DECOMPOSITION (PUTREFACTION)
- CH 805B MUTILATED BODIES
- CH 805C DETAILS OF VISCERA AND OTHER ARTERIES
- CH 805D THE POSTMORTEM FATE OF HUMAN REMAINS
- CH 805E DIFFERENCE BETWEEN RIGOR MORTIS AND CADAVERIC SPASM

LEGAL CONSIDERATION & TYPES INJURIES

- CH 806. CLASSIFICATION OF WOUNDS
- CH 807. CLASSIFICATION ACCORDING TO SEVERITY OF THE INJURY (A) SIMPLE B) GRIEVOUS OR DANGEROUS HURT
- CH 807A DIFFERENCES BETWEEN ANTEMORTEM AND POSTMORTEM ABRASIONS



CH 785



CH 791

**Laminated & Fitted with plastic strips
Laminated & Mounted on Board**

Size : 20"X26"

All Charts Also Available Size: 30"x40"

Laminated & Fitted with Plastic Rollers

MECHANICAL INJURIES

- CH 808. DIFFERENCE BETWEEN BRUISES & LESIONS PRODUCED BY CHEMICALS
- CH 808A CLASSIFICATION OF INJURIES CAUSED BY MECHANICAL VIOLENCE
- CH 809. DIFFERENCE BETWEEN BRUISES & CONGESTION
- CH 810. DIFFERENCE BETWEEN SUICIDAL & HOMICIDAL CUT THROAT
- CH 811. DIFFERENCE BETWEEN WOUNDS OF ENTRANCE & EXIT
- CH 812. SHOT GUN INJURIES
- CH 812A FIRE ARM
- CH 812B TYPES OF GUNS
- CH 812C PRESSURE IN CHAMBER, MUZZLE VELOCITY, SPINNING REVOLUTION OF PROJECTILE, STRIKING RANGE AND EFFECTIVE RANGE OF PROJECTILES
- CH 812D PROPERTIES OF DIFFERENT EXPLOSIVES

THERMAL INJURIES

- CH 813. RULE OF NINE (DIFFERENCE BETWEEN BURNS & SCALDS)

VIOLENT ASPHYXIA DEATHS

- CH 814. DIFFERENCE BETWEEN HANGING & STRANGULATION

FORENSIC TOXICOLOGY

- CH 815. CLASSIFICATION OF POISONS
 { PART-1 ACCORDING TO THE SITE & MODE OF ACTION }
 { PART-2 ACCORDING TO THE MOTIVE OR NATURE OF USE } **IN ONE CHART**
- CH 815A TREATMENT OF COMMON POISONS

METALLIC CHEMICAL IRRITANTS

- CH 816. DIFFERENCE BETWEEN ACUTE ARSENIC POISONING & CHOLERA /GASTRO-ENTERITIS

SPINAL POISONS

- CH 817. DIFFERENCE BETWEEN STRYCHNINE POISONING & TETNUS N.H.R.C. ON AUTOPSY PROTOCOL
- CH 819. POSTMORTEM DETECTION OF TORTURE

PREGNANCY & DELIVERY

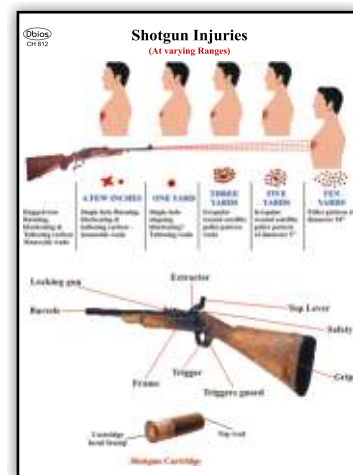
- CH 820. HEIGHT & FUNDUS OF UTERUS AT DIFFERENT PERIODS OF PREGNANCY
- CH 821. DIFFERENCE MEASUREMENTS OF UTERUS AFTER DELIVERY
- CH 821A DIFFERENCE BETWEEN VIRGINITY AND DEFLORATION
- CH 821B CLASSIFICATION OF SEXUAL OFFENCES
- CH 821C DEFINITIONS OF DIFFERENT SEXUAL OFFENCES E.G. RAPE, INCEST, SODOMY, TRIBADISM & BESTIALITY
- CH 821D METHODS ADOPTED FOR INDUCING CRIMINAL ABORTIONS
- CH 821E DIFFERENCES BETWEEN ALIVE BORN AND DEAD BORN CHILD
- CH 821F DIFFERENT BETWEEN NATURAL AND CRIMINAL ABORTION

ANIMAL IRRITANTS

- CH 823. TYPES OF SNAKES NON POISONOUS SNAKE, PYTHON, BANDED KRAIT, COMMON KRAIT, KING COBRA, RUSSELL VIPER
- CH 824. DIFFERENCE BETWEEN COBRA & VIPER FATAL DOSE & AMOUNT INJECTED IN ONE BITE
- CH 824A SCORPION
- CH 824B BEES AND WASPS
- CH 824C CANTHARIDES (SPANISH FLY)

FORENSIC PSYCHIATRY

- CH 825. DIFFERENCE BETWEEN TRUE INSANITY & FEIGNED INSANITY
- CH 826. ENUMERATING OUT-LINE CAUSED OF STERILITY IN MALES AND FEMALES
- CH 827. EFFECTS OF NARCOTICS
- CH 828. DIFFERENCE BETWEEN RESPIRED AND UNRESPIRED LUNGS
- NEW 1 Civil and Criminal Negligence
- NEW 2 Different Types of Skull Based on Cephalic
- NEW 3 Professional Negligence and Infamous Conduct
- NEW 4 Signs of Pregnancy



CH 812

Drug Charts

Size 21"x17"

Laminated & Mounted on Board

- 1. Hallucinogens
- 2. Inhalants

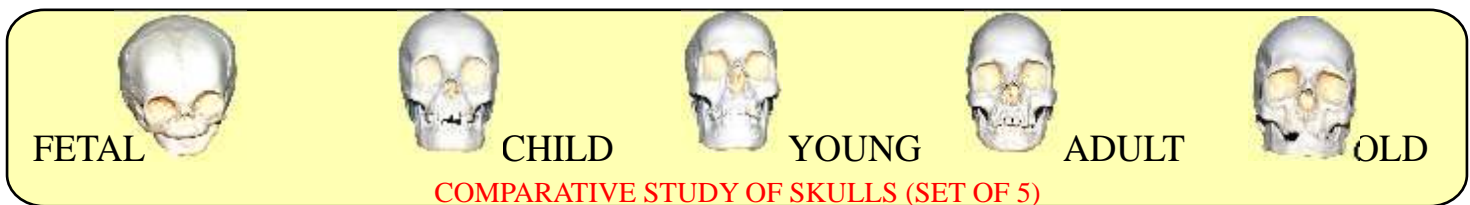
- 3. Marijuana
- 4. Narcotics

- 5. Pcp (Phencyclidine)
- 6. Sedatives

- 7. Steroids
- 8. Stimulants



- IMP.130** IMPORTED VERTEBRAL COLUMN WITH STAND
Flexible spine, with pelvis, occipital bone, vertebral artery and dorsal herniated disc between the 3rd and 4th lumbar vertebrae. **Size : 29" tall.**
- IMP. 131** IMPORTED VERTEBRAL COLUMN WITH FEMORAL HEADS & STAND
Same as IMP. 130 with addition of movable femoral heads **size 32" tall**
- A-86** IMPORTED ADULT LEG BONE WITH THREE JOINTS & LIGAMENTS
- A-87** IMPORTED ADULT ARM BONE WITH THREE JOINTS & LIGAMENTS
- IMP 339** SKELETON OF MALE PELVIS (**LENGTH 24CM. , WIDTH 17CM. , HEIGHT 15CM.)**
- IMP 340** SKELETON OF FEMALE PELVIS (**LENGTH 20CM., WIDTH 15CM. , HEIGHT 19CM.)**
- Imp. 97 A** FETAL SKULL
- Imp. 260 A** COMPARATIVE STUDY OF LOWER JAW (SET OF 5)
- Imp. 260 B** COMPARATIVE STUDY OF TEETH (SET OF 3)
- Imp. 260 A** COMPARATIVE STUDY OF SKULL (SET OF 5)



Am 103

Am103. DISARTICULATED HUMAN SKELETON WITH SKULL LIFE-SIZE, DISARTICULATED ADULT SKELETON INCLUDES 3-PART SKULL, LEFT HAND AND LEFT FOOT ON WIRE.

AM 103A DISARTICULATED MUSCULAR SKELETON



Am 126

IMP- 126 **IMPORTED BUDGET BUCKY SKELETON :** This economical, life-size articulated adult plastic skeleton is ideal for teaching the basics of anatomy when intricate textural nuances of the bone are not required. The arms and legs are removable for study. Features nerve branches, vertebral artery, and herniated lumbar disk. Skull included movable jaw, cut calvarium, suture lines, and 3 removable lower teeth. Mounted on a stand. Complete with dust cover and skeletal system

IMP.-127 **IMPORTED MR. SUPERSKELETON :** The world's most complete skeleton, featuring joint ligaments, a flexible spine with nerve endings and full indication of muscle origins and insertions painted on one-half of the body.



Am 127

All Skeleton Parts are Near to Original

Skull With Mandible 3parts
 Ribs (L&R)
 Sternum
 Humerus, Radius, Ulna (Left)
 Humerus, Radius, Ulna (Right)
 Pelvis (L&R)
 Sacrum
 Femur, Tibia, Fibula (Left)

Femur, Tibia, Fibula (Right)
 Vertebral Column (Disarticulated)
 Cervical Vertebrae (Set of 7)
 Thoracic Vertebrae (Set of 12)
 Lumbar Vertebrae (Set of 5)
 Hand Disarticulated (L&R)
 Foot Disarticulated (L&R)

IMP126A
Fetus Skeleton Model

Female
IMP.- 126 F

IMP. 126A



WEAPON SET OF 100



POISON SET OF 100

**RECTANGULAR
 SPECIMEN
 JARS**

**(ASK FOR
 SIZES & RATES)**

Dbios **Pioneers of Forensic**

Size : 20"X26" Laminated & Mounted on Board

- | | | | |
|------|---|-------|-----------------------|
| FP 1 | Alphonse Bertillon (1853-1914) | FP 9 | Clea Koff |
| FP 2 | Mathieu Joseph Bonaventure Orfila (1787-1853) | FP 10 | Cyrill Wecht |
| FP 3 | Alec Jeffreys | FP 11 | Henry Lee |
| FP 4 | Edmond Locard | FP 12 | Michael Baden |
| FP 5 | Joseph Bell | FP 13 | Alexandre Beaudoin |
| FP 6 | Sara Bisel | FP 14 | Brian E. Dalrymple |
| FP 7 | William Bass | FP 15 | Paul L. Kirk |
| FP 8 | William Maples | FP 16 | Forensic History - I |
| | | FP 17 | Forensic History - II |



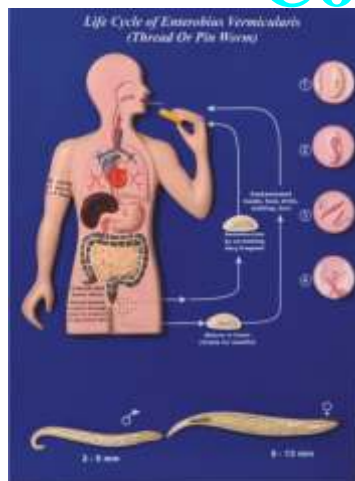
FMT MICROSCOPIC SLIDES SET OF 10 -

- | | | | |
|------------|--|------------|---|
| C-1 | Blood Human (sm) - Mammal (sm) | C-6 | Fingerprints - Arch, Loop, whorl (w.m) |
| C-2 | Bloodstained Textile Fibers - Dyed Vs Blood Stained | C-7 | Hair - Human & Animal (w.m) |
| C-3 | Fibers - Nylon, Dacron, & Rayon Fibers (w.m) | C-8 | Skin - Human Three Types (sect) |
| C-4 | Cheek Cells - Human & Animal (sm) | | |
| C-5 | DNA in Cells (sect) | | |

FORENSIC INSTRUMENTS AS PER MCI

- | | |
|---|--|
| 1. Anthropology Rod | 24. Stopwatch Digital |
| 2. Skin Fold Caliper | 25. X'ray view box 4 IN 1 LED LIGHT |
| 3. Sliding Caliper | 26. View Box 2 in 1 LED LIGHT |
| 4. Spreading Caliper | 27. B.P. Apparatus DIGITAL |
| 5. Goniometer (Set of 3) | 28. Automatic tissue processing machine |
| 6. Anthropometric Board Wooden | 29. Microtome with knife |
| 7. Anthropometric Board Metal | 30. Hot plates |
| 8. Weighing machine, dial type human | 31. L.Modes |
| 9. Equipment for reporting height | 32. Leather Straps |
| 10. Balance chemical | 33. Parafin Bath Embedding |
| 11. Balance, single pan for weighing foetus | 34. Slide Warming Table |
| 12. Weighing machine for Weighing dead bodies | 35. Stone Carbarandon |
| 13. Weighing machine for organs | 36. Water bath (Tissue Flowing) |
| 14. Metal scale to measure upto 7 ft. | 37. Distillation plant STEEL |
| 15. Steel tape roll | 38. Brain knife |
| 16. Autopsy table | 39. BIOck Holder |
| 17. Styker autopsy saw, with accessories | 40. Digital Spectrometer |
| 18. Autopsy saw electric wih 2 blade indian | 41. Digital PH meter |
| 19. Hacksaw | 42. Electric Auto slide projector |
| 20. Dissection sets, (Postmortem) | 43. Glass cutting Pencil |
| 21. Rib. Shears, right and left | 44. Hand Set heat Sealer |
| 22. Microscope student 2 OBJECTIVE | 45. Spectroscope Lens with adjustable slit |
| 23. Microscope Binocular, research | |

* Community (PSM) Department



PSM Models 125
Charts 600
Slides :- PSM Set of 50
Scientist Portraits 55



Also available Charts, Models & Slides
Microbiology Department

Microbiology Models 35
Charts:- 200
Slides :- Microbiology Set of 50

Scientist Portraits 90



MB 305

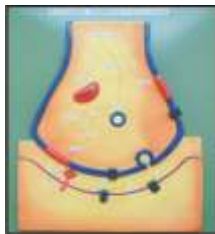


MB 307

*** Pharmacology Department**



PCM 02



PCM 03

Physiology Models 15
Charts 600
Scientist Portraits 55

