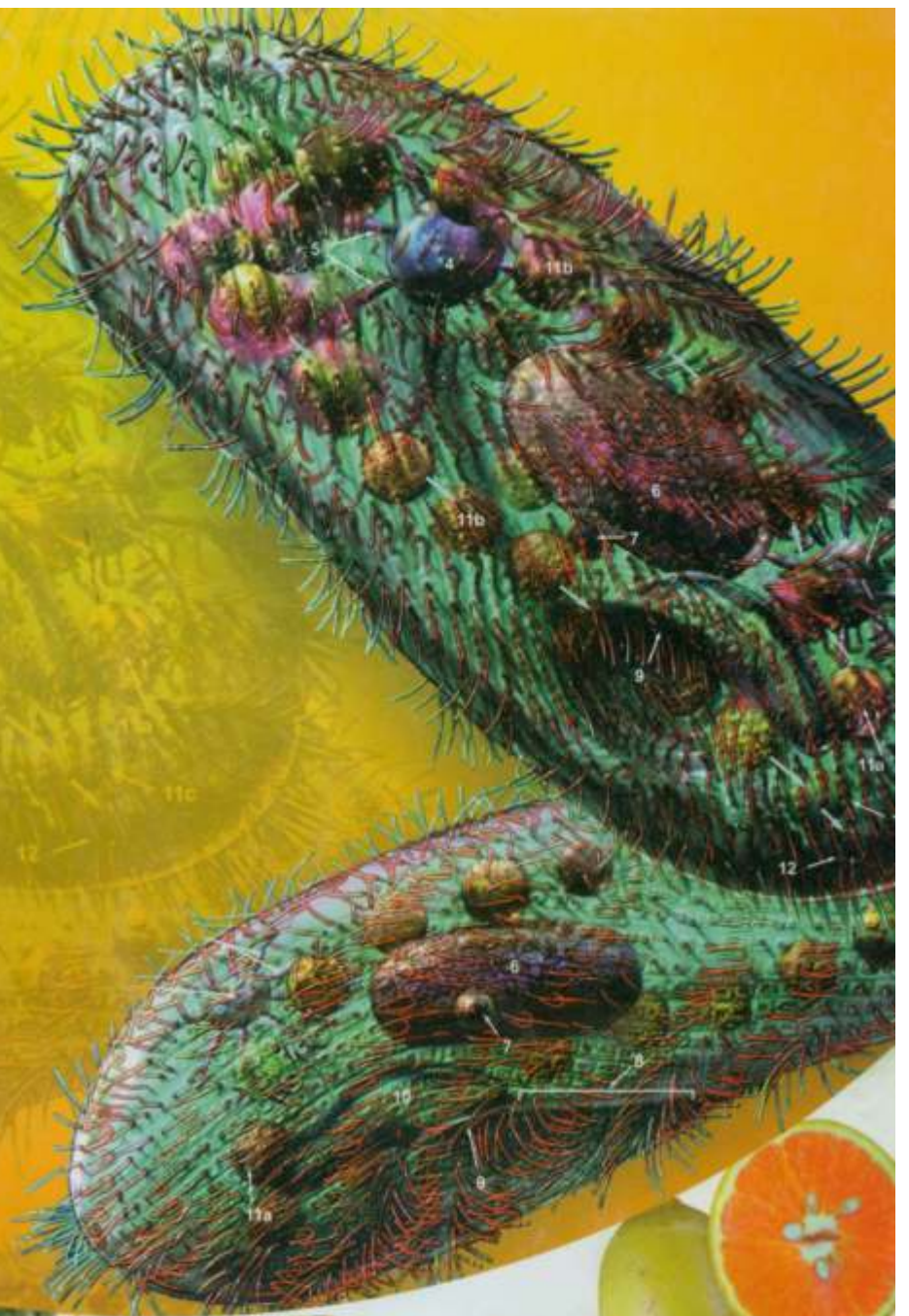


List No. 1

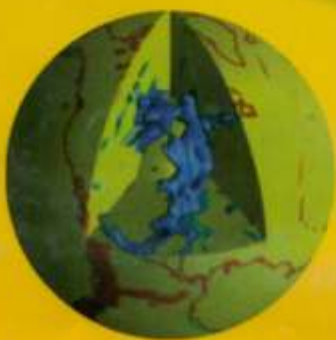
w.e.f. Jan. 15, 2015



Dbios

Charts & Models

For School-Universities



Human - total 54 charts**SYSTEMS OF HUMAN BODY**

- CH 551 Muscular System
 CH 551A Muscular Back View
 CH 552 Skeleton-I (Entire skeleton, vertebral column & skull)
 CH 552A Skeleton (Back view)
 CH 553 Nervous System
 CH 554 Autonomic Nervous System
 CH 555 Arterial System
 CH 556 Venous System
 CH 557 Lymphatic System
 CH 558 Digestive System
 CH 559 Respiratory System
 CH 560 Excretory System
 CH 561 Female Reproductive System
 CH 562 Male Reproductive System
 CH 563 Endocrine System
 CH 597 Human Immune System

STRUCTURES/ORGANS

- CH 564 Heart
 CH 565 Brain
 CH 566 Spinal Nerves
 CH 567 Skeleton-II (Vertebrae, Sacrum & Thoracic Cage)
 CH 568 Skeleton III (Girdles & Limbs)
 CH 569 Vertebral Column
 CH 570 Human Skull
 CH 571* Head & Neck
 CH 572 Eye
 CH 573 Ear
 CH 574 Ear, Nose & Throat
 CH 575 Skin
 CH 576 Nephron
 CH 577 Shoulder & Elbow
 CH 578 Hand & Wrist
 CH 579 Hip & Knee
 CH 580 Foot & Ankle
 CH 581 Teeth
 CH 582 Human Liver
 CH 583 Kidney
 CH 584 Pregnancy & Birth
 CH 585 Pharynx & Larynx
 CH 586 Embryo Development
 CH 587 Human Anatomy
 CH 587A Human Blood Cells.
 CH 588 Nose
 CH 589 Tongue
 CH 590 Human Joints
 CH 301 The Cell
 CH 592 Menstrual Cycle
 CH 593 Spinal Cord
 CH 594 Sense organs
 CH 595 Muscles
 CH 596 Bones & Cartilage
 CH 309 Oogenesis
 CH 310 Spermatogenesis
 CH 10 DNA
 CH 11 RNA

Biology -total 95 charts**CYTOLOGY TOTAL 17 CHARTS**

- CH 01 Cell Membrane
 CH 02 Plant Cell Wall
 CH 03 Endoplasmic Reticulum
 CH 04 Mitochondria

- CH 05 Golgi Complex
 CH 06 Chloroplast
 CH 07 Nucleus
 CH 08 The Chromosome
 CH 08 A Gene Map - Male
 CH 08B Gene Map - Female
 CH 09 Protein Synthesis
 CH 10 D.N.A.
 CH 11 R.N.A.
 CH 12 Centrioles , Flagella & Cilia
 CH 1127* Enzymes
 CH 13A Ribosomes & Lysosomes
 CH 14 Microbodies

GENETICS - 16 CHARTS

- CH 15 Monohybrid Crossing-Incomplete Dominance
 CH 16 Dihybrid Crossing
 CH 17 Monohybrid Crossing
 CH 18 Mendelian Explanation Garden Pea-Complete Dominance
 CH 19 Sex linked inheritance in Drosophila
 CH 20 Codominance (Coat. Colour in Andalusian fool)
 CH 22A* Mutations & Chromosomal Aberrations
 CH 22B Linkage & Crossing Over
 CH 283 Analogous Organs: Plants
 CH 284 Homologous Organs: Plants
 CH 285 Analogous Organs: Animals
 CH 286 Homologous Organs: Animals
 CH 287* Pedigree Analysis: Rolling Tongue
 CH 288* Pedigree Analysis: Blood Group
 CH 289* Pedigree Analysis: Color Blindness
 CH 290* Pedigree Analysis: Widow's Peak

PARASITOLOGY & DISEASES - 22CHARTS

- CH 23 Cardiovascular Disease
 CH 24 Malaria
 CH 25 Tuberculosis
 CH 26 Cholera
 CH 27 Typhoid
 CH 28 Dysentery
 CH 29 Diarrhoea
 CH 30 Filariasis (Ring Worm)
 CH 31 Leprosy
 CH 32 Pathogenic Protozoa
 CH 33 Entamoeba (Life Cycle)
 CH 34 Acquired Immuno Deficiency Syndrome (AIDS)
 CH 35 Enterobius vermicularis (Pinworm)
 CH 36 Malarial Parasite Life History (Plasmodium vivax)
 CH 37 Ascaris lumbricoides Life History
 CH 38 Fasciola hepatica (Liver Fluke)
 CH 39 Ancylostoma duodenale (Hookworm) L.C.
 CH 40 Deficiency Diseases
 CH 41 Vectors of Human Diseases
 CH 42 Colour Blindness & Hemophilia
 CH 43 Prevention of Diseases
 CH 43A L.H. Leishmania & Tryposoma

NUTRITION

- CH 44 Balanced Diet
 CH 44A Vitamins
 CH 44B Weight for Height.
 New Personal Safety Chart

ECOLOGY - 27 CHARTS

- CH 56 Ozone Layer
 CH 57 Green House Effect
 CH 58 Seasons
 CH 59 Biogas Plant
 CH 60 Water Cycle
 CH 61 Nitrogen Cycle
 CH 62 Carbon Cycle
 CH 63 Oxygen Cycle
 CH 64 Environmental Pollution
 CH 65 Food Web
 CH 66 Food Chain
 CH 66A* Food Pyramid
 CH 67 Land Pollution
 CH 68 Phosphorous Cycle
 CH 69 Sulphur Cycle
 CH 152 Hydrophytic Plants
 CH 154 Xerophytic Plants
 CH 154A Xerophytic Animals
 CH 154B Aquatic Animals
 CH 155 Mesophytic plants
 CH 156 Epiphytic plants
 CH 157 Insectivorous Plants
 CH 158 Fossil Plants
 CH 158A Rhynia
 CH 160 Hydrilla
 CH 291 Hydrosere
 CH 292 Xerosere
 CH 294 Adaptation : Plant & Animal

PLANT PHYSIOLOGY - 9 CHARTS

- CH 45 Plant Respiration
 CH 46 Plant Transpiration
 CH 47 Plant Osmosis & Root Pressure
 CH 48 Photosynthesis - Light Reaction
 CH 49 Photosynthesis - Dark Reaction
 CH 50 Glycolysis
 CH 51 Krebs Cycle
 CH 55 Photosynthesis
 CH 282 Emasculation, Bagging & Tagging

**CH 594**

* These charts are printed on White Rexine

Human, Botany & Zoology Charts size 75x100cms. On Black Raxine

PLANT PATHOLOGY

- CH 104 Plant Diseases : Bacterial & Viral
- CH 105 Plant Diseases: Fungal

MEDICINAL PLANTS

- CH 106 Medicinal Plants -I (Exported from India)
- CH 107 Medicinal Plants -II (Imported in India)
- CH 108 Medicinal Plants -III (Endangered Species)
- CH 109 Medicinal Plants -IV (Prohibited to Export from India)

Botany- total 178 charts

ALGAE - 17 CHARTS

- CH 70 Chlamydomonas Structure & Life Cycle.
- CH 71 Ulothrix Structure & Life Cycle
- CH 72 Oedogonium Life Cycle
- CH 73 Spirogyra Structure & Reproduction.
- CH 74 Chara Structure and Life History
- CH 75 Volvox Structure and Life History
- CH 76 Oscillatoria Structure and Life History
- CH 77 Nostoc Structure and Life History
- CH 78 Batrachospermum Structure & Life History
- CH 79 Polysiphonia Structure & Life History
- CH 80 Ectocarpus Structure & Life Cycle
- CH 81 Dictyota Structure and Life History
- CH 82 Fucus Structure & Life Cycle
- CH 83 Vaucheria Structure & Life History
- CH 84 Sargassum Structure & L.H.
- CH 85 Diatoms Structure & Reproduction.
- CH 86 Chlorella : Structure & Life Cycle

FUNGI 21 CHARTS

- CH 87 Erysiphe
- CH 88 Morchella
- CH 89 Polyporus
- CH 89A Cladophora

- CH 90 Rhizopus Structure & Reproduction.
- CH 91 Mucor Structure & Reproduction.
- CH 92 Yeast : Saccharomyces
- CH 93 Bacteria: Structure and Forms
- CH 94 Bacteria: Reproduction
- CH 95 Viruses
- CH 96 Penicillium
- CH 97 Albugo candida
- CH 98 Phytophthora infestans
- CH 99 Puccinia graminis Life Cycle
- CH 100 Agaricus campestris (Mushroom)
- CH 101 Peziza Structure & Reproduction
- CH 102 Lichens
- CH 103 Aspergillus
- CH 103A Claviceps (Ergot of Rye.)
- CH 103B Alternaria
- CH 103C Ustilago

BRYOPHYTA - 6 CHARTS

- CH 111 Riccia Str. & reproduction
- CH 112 Marchantia Structure & Life History
- CH 113 Anthoceros Structure & reproduction
- CH 114 Funaria (Moss) Life
- CH 114A Sphagnum
- CH 114B Polytrichm : Structure & L.C.

PTERIDOPHYTA - 19 CHARTS

- CH 115 Selaginella Reproduction
- CH 115A Selaginella Structure
- CH 116 Psilotum Life History
- CH 116A Psilotum Structure
- CH 117 Marsilea Reproduction
- CH 117A Marsilea Structure
- CH 118 Lycopodium Structure
- CH 118A Lycopodium Reproduction
- CH 119 Equisetum Reproduction
- CH 119A Equisetum Structure
- CH 120 Aspidium (Fern) Life History
- CH 120A Aspidium (Fern) Structure
- CH 121 Pteris (Fern) Life History
- CH 121A Pteris (Fern) Structure
- CH 122 Nephrolepis (Fern) L. H.
- CH 122A Nephrolepis (Fern) Str.
- CH 123 Adiantum Life History
- CH 123A Adiantum Structure
- CH 124 Rhizome Sections

ANGIOSPERMS - 22 CHARTS

- CH 143 L.C. of Angiosperms
- CH 144 Bentham & Hooker Classification
- CH 145 Plant cell (Ultra structure)
- CH 146 Mitosis in Plants
- CH 147 Meiosis in Plants
- CH 148 Structure of Chromosome during mitosis
- CH 149 Structure of Chromosome during meiosis
- CH 150 Parts of a Plant (Mustard)
- CH 151 Plant Kingdom - I (Flowering)
- CH 151A Plant Kingdom - II (Non-flowering)
- CH 153 Datura Life Cycle
- CH 159 Comparison of Monocot & Dicot Plants
- CH 210 Androecium
- CH 211 Gynaecium
- CH 213 Placentation
- CH 214 Aestivation
- CH 215 Mitosis vs Meiosis
- CH 216 Inflorescence-1 (Simple, Racemose & Cymose)
- CH 217 Inflorescence - II (Compound & Special)

ANGIOSPERMS

- CH 218 Different Types of Pollination
- CH 219 Forms of Ovules
- CH 220 Types of Flowers

GYMNOSPERMS - 7 CHARTS

- CH 130 Cycas Life History
- CH 131 Cycas Anatomy
- CH 133 Gnetum Anatomy
- CH 133A Gnetum Life Cycle
- CH 134 Ephedra Structure and Anatomy
- CH 135 Pinus Life History
- CH 136 Pinus Anatomy

ROOTS, STEMS, LEAVES - 24 CHARTS

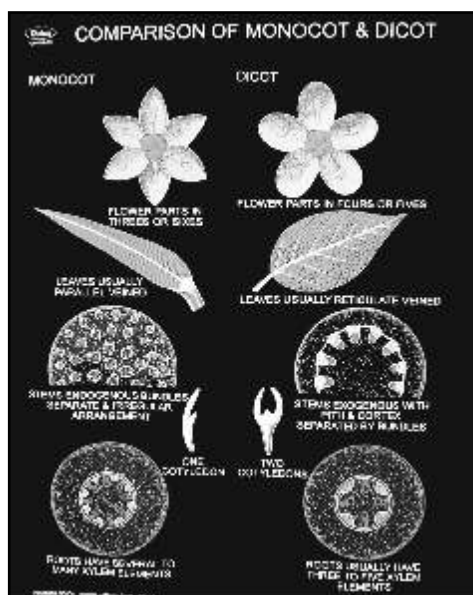
- CH 172 Vascular Bundles
- CH 173 Stomata
- CH 174 T.S. Dicot root
- CH 175 T.S. Monocot root
- CH 176 T.S. Dicot stem
- CH 177 T.S. Monocot stem
- CH 178 T.S. Dicot leaf
- CH 179 T.S. Monocot leaf
- CH 180 Secondary Growth in Dicot Stem
- CH 181 Secondary Growth in Dicot root
- CH 182 Root modification
- CH 183 Aerial Stem modification
- CH 184 Leaf modification
- CH 185 Vegetative propagation
- CH 186 Artificial Vegetative propagation
- CH 187 Specialized stems
- CH 188 Typical leaf showing parts
- CH 189 Types of leaves
- CH 190 Simple leaves
- CH 191 Stipules
- CH 192 Leaf Venation
- CH 193 Compound Leaves
- CH 194 Phyllotaxy
- CH 195 Leaf Laminae

SEEDS & FRUITS - 9 CHARTS

- CH 161 Pea Germination
- CH 162 Castor seed Germination
- CH 163 Rice Germination
- CH 164 Hypogeal Seed Germination (Gram & Maize)
- CH 165 Epigeal Seed Germination (Bean & Sunflower)
- CH 166 Dicot seed
- CH 167 Monocot seed
- CH 169 Dispersal of Seeds & Fruits
- CH 170 Classification of Fruits

FLOWER & EMBRYOLOGY - 11 CHARTS

- CH 200 Parts of Flower
- CH 201 Fertilization showing germination of Pollen grain
- CH 202 Germination of Pollen Grain & Dev. of Male Gametophyte
- CH 203 T.S. Anther & Its Development
- CH 204 Megasporogenesis
- CH 205 Development of Embryo and Endosperms
- CH 206 Development of Embryo in Sagittaria
- CH 208 Microsporangium
- CH 209 Types of Embryo Sacs
- CH 212 Development of Monocot Embryo
- CH 212A Development of Dicot Embryo Capsella



CH 159

HISTOLOGY - 6 CHARTS

- CH 221 Plant Anatomy Part I
Simple Tissues
- CH 221A Parenchyma & Collenchyma
CH 221B Sclerenchyma
- CH 222 Plant Anatomy Part II
Complex Tissues; Xylem
- CH 223 Plant Anatomy Part III
Complex Tissue; Phloem
- CH 224 Plant Tissue Culture

**Taxonomy families
- TOTAL 47 CHARTS**

- CH 229 Acanthaceae
CH 230 Amaranthaceae
- RANUNCULACEAE**
CH 231 Ranunculus muricatus
CH 232 Delphinium ajacis (Larkspur)
- BRASSICACEAE (CRUCIFERAE)**
CH 233 Brassica campestris (Mustard)
- PAPAVERACEAE**
CH 234 Papaver rhoeas (Garden Poppy)
CH 235 Argemone mexicana
- MUSACEAE**
CH 236 Musa paradiasiaca (Banana)
- MALVACEAE**
CH 237 Malva Sylvestris
CH 238 Althaea rosea (Holly Hock)
CH 239 Hibiscus rosa sinensis (Shoe Flower)
- CH 240 Gossypium herbaceum
- RUTACEAE**
CH 241 Citrus aurantium
- FABACEAE (LEGUMINOSAE)**
CH 243 Lathyrus odoratus (Papilionatae)
CH 244 Cassia fistula (Caesalpinioideae)
CH 245 Acacia nilotica (Mimosoideae)
CH 275 Clitoria ternetea
- ROSACEAE**
CH 246 Rosa indica (Rose)
- ORCHIDACEAE**
CH 247 Vanda roxburghii
- CUCURBITACEAE**
CH 249 Luffa aegyptiaca
- CARYOPHYLLACEAE**
CH 250 Silene conoidea (Catch fly)
- CHENOPODIACEAE**
CH 251 Chenopodium album
- EUPHORBIACEAE**
CH 252 Ricinus communis
CH 254 Euphorbia splendens
- POLYGONACEAE**
CH 255 Polygonum
- ASTERACEAE (COMPOSITAE)**
CH 256 Helianthus annuus (Sunflower)
CH 257 Sonchus asper
CH 276 Tridax procumbens
- SOLANACEAE**
CH 258 Solanum nigrum
CH 259 Petunia hybrida
CH 277 Datura metal
- RUBIACEAE**
CH 278 Ixora coccinea
- ARECACEAE**
CH 279 Cocus nucifera

MORACEAE

- CH 280 Morus nigra; Ficus sunia
- ASCLEPIADACEAE**
CH 260 Calotropis procera (Aak)
- LAMIACEAE (LABIATAE)**
CH 262 Salvia officinalis
CH 263 Ocimum basilicum
- APOCYNACEAE**
CH 264 Nerium odorum (Oleander)
- ANNONACEAE**
CH 266 Annona squamosa (Sitaphal)
- LILIACEAE**
CH 267 Asphodelus tenuifolius
CH 268 Allium cepa (Onion)
CH 268A Asparagus
- POACEAE (GRAMINEAE)**
CH 269 Avena sativa (Oat)
CH 270 Zea mays (Maize)
CH 273 Triticum vulgare (Wheat)
- APIACEAE (UMBELLIFERAE)**
CH 271 Coriandrum sativum (Dhania)
- CONVOLVULACEAE**
CH 272 Ipomoea palmata

ZOOLOGY - total 203 charts**CELLS & TISSUES - 11 CHARTS**

- CH 301 Animal Cell (Ultra Structure)
CH 302 Animal Mitosis (Cell Division)
CH 303 Animal Meiosis (Cell Division)
CH 304 Animal Tissues-I
CH 305 Animal Tissues-II
CH 306 Animal Tissues-III
CH 306A Nerve Cell
CH 307 Gametogenesis
CH 308 Fertilization in Animals
CH 309 Oogenesis
CH 310 Spermatogenesis
- PROTOZOA - 7 CHARTS**
CH 315 Amoeba Structure & Locomotion
CH 36 Plasmodium vivax
CH 317 Paramecium Structure
CH 318 Paramecium Rep.-I
CH 318 A Paramecium Rep.-II
CH 319 Euglena Structure & L. H.
CH 33 Entamoeba (Life Cycle)

PORIFERA - 3 CHARTS

- CH 325 Phylum Porifera
CH 326 Sycon Development
CH 326 A Canal Systems in Sponges

COELENTERATA - 4 CHARTS

- CH 327 Obelia Structure
CH 327 A Corals & Coral Reefs
CH 328 Hydra structure & Internal Anatomy

CH 328A Aurelia str. & Life History**PLATYHELMINTHES - 4 CHARTS**

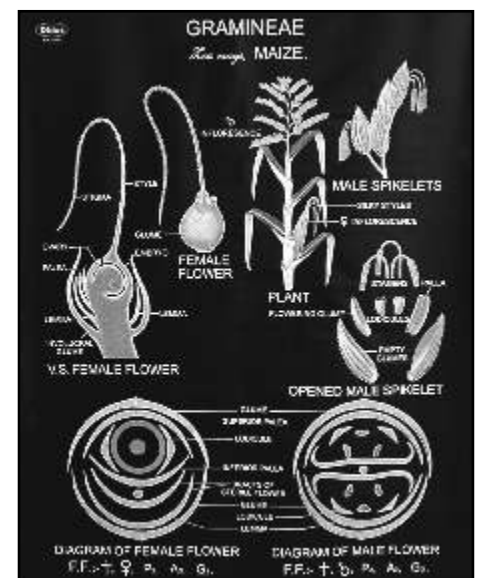
- CH 37 Ascaris Internal Structure of Male & Female
CH 330 Taenia solium Structure & L. H. (Tapeworm)
CH 38 Liverfluke Str. & Life History
CH 39 Ancylostoma duodenale Life Cycle (Hook Worm)

ANNELIDA - 9 CHARTS

- CH 334 Earthworm External Characters
CH 335 Earthworm internal Anatomy
CH 336 Earthworm Development
CH 337 Earthworm Reproductive System
CH 338 Earthworm Nervous System
CH 339 Earthworm Digestive System
CH 340 Earthworm Excretory System
CH 341 Earthworm Circulatory System
CH 342 Earthworm Respiratory

ARTHROPODA - 30 CHARTS

- CH 353 Beneficial Insects
CH 354 Harmful Insects
CH 355 Food Grain Pests
CH 355A Insects Mouth Parts
CH 356 Housefly L.H
CH 357 Mosquito L. H. showing comparison of Culex & Anopheles
- CH 358 Butterfly L.H.
CH 358A Types of Butterfly
CH 359 Honey Bee L.H.
CH 360 Silkworm L.H.
CH 361 Grasshopper L.H.
CH 361A Grasshopper Digestive System
CH 362 Cockroach L.H.
CH 362 A Cockroach Anatomy
CH 363 Cockroach External Character
CH 363 A Cockroach Mouth Parts
CH 364 Cockroach Digestive System
CH 365 Cockroach Respiratory system
CH 366 Cockroach Circulatory System
CH 367 Cockroach Nervous system
CH 368 Cockroach Reproductive system
CH 368 A Cockroach Excretory
CH 369 Prawn Internal Anatomy
CH 370 Prawn External Anatomy
CH 371 Prawn Reproductive system
CH 372 Prawn Digestive system
CH 373 Prawn Excretory system
CH 374 Prawn Nervous System
CH 375 Prawn Circulatory system
CH 376 Scorpion External character

**CH 270**

Botany & Zoology Charts size 75x100cms. On Black Raxine

MOLLUSCA - 13 CHARTS

- CH 380 Pila External Characters
- CH 381 Pila Reproductive System
- CH 382 Pila Circulatory System
- CH 383 Pila Nervous System
- CH 384 Pila Sense Organs
- CH 385 Pila Res. & Excretory system
- CH 386 Pila Digestive System

- CH 387 Unio External Characters
- CH 388 Unio Circulatory system
- CH 389 Unio Internal Anatomy
- CH 390 Unio Nervous System
- CH 391 Unio Respiratory System
- CH 392 Unio Digestive System

ECHINODERMATA

- CH 395 Starfish (Asterias) Ext.characters & Anatomy
- CH 396 Starfish (Asterias) Water Vascular System

PISCES - 25 CHARTS

- CH 401 Scoliodon External Characters
- CH 402 Scoliodon General Viscera
- CH 403 Scoliodon Digestive System
- CH 404 Scoliodon Brain different views
- CH 405 Scoliodon Skeleton
- CH 406 Scoliodon Skull
- CH 407 Scoliodon Urinogenital System
- CH 409 Scoliodon Venous Aystem
- CH 409A Scoliodon Arterial System
- CH 410 Scoliodon Cranial Nervous System
- CH 411 Scoliodon Receptor organs

- CH 412 Labeo rohita External Characters
- CH 413 Labeo rohita Axial Skeleton
- CH 414 Labeo rohita Skull
- CD 414A Labeo rohita Digestive
- CD 414B Labeo rohita Respiratory
- CD 414C Labeo rohita Urinogenital
- CD 414D Labeo rohita Eye & ear
- CH 415 Amphioxus External Characters
- CH 416 Amphioxus General Anatomy
- CH 417 Amphioxus T.S. through Different Regions
- CH 418 Amphioxus Development
- CH 419 Amphioxus Excretory System
- CH 420 Fish Types
- CH 421 Fish Respiratory System

AMPHIBIA - 18 CHARTS

- CH 425 Frog External Characters
- CH 426 Frog Internal Anatomy
- CH 427 Frog Skeleton
- CH 428 Frog Skull different views
- CH 429 Frog Development -I Egg to Gastrulation
- CH 430 Frog Development-II Gastrula to Tadpoles
- CH 431 L.H. Frog showing Metamorphosis
- CH 432 Frog Digestive System
- CH 433 Frog Nervous System
- CH 434A Frog Male Reproductive System
- CH 434B Frog Female Reproductive System.
- CH 435 Frog Excretory System
- CH 436 Frog Arterial System
- CH 437 Frog Venous System
- CH 438 Frog Respiratory System
- CH 443 Frog Skin V.S
- CH 444 Frog Brain different views
- CH 445 Frog Heart different views

OTHERS

- CH 447 Placenta Types
- CH 448 Distribution of villi
- CH 449 Cow Digestive System

REPTILIA - 13 CHARTS

- CH 451 Types of Reptiles
- CH 461 Snake Types
- CH 452 Snakes Poisonous & Non poisonous
- CH 453 Varanus Skull Different views
- CH 454 Varanus skeleton
- CH 455 Varanus Circulatory system

- CH 456 Varanus Excretory system
- CH 458 Calotes various systems (Each system on separate chart)
- CH 460A Uromastix Digestive system
- CH 460B Uromastix Arterial system
- CH 460C Uromastix Venous system
- CH 460D Uromastix Nervous system
- CH 462 Lizard External & Internal

AVES - 19 CHARTS

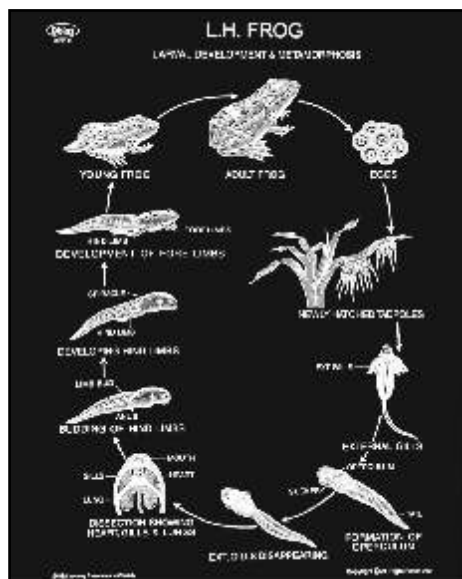
- CH 465 Pigeon External & Internal Characters
- CH 467 Pigeon Skeleton
- CH 468A Pigeon Brain
- CH 468B Pigeon Eye
- CH 468C Pigeon Digestive
- CH 468D Pigeon Arterial
- CH 468E Pigeon Verious
- CH 468F Pigeon Heart
- CH 468G Pigeon Reproductive
- CH 468H Pigeon Ear
- CH 469 Fowl Skeleton
- CH 470 Chick Development
- CH 471 Chick Embryo - 16 Hrs.
- CH 473 Chick Embryo - 24 Hrs.
- CH 477 Chick Embryo - 48 Hrs.
- CH 480 Chick Embryo - 96 Hrs.
- CH 481 Beaks of Birds
- CH 482 Claws of Birds
- CH 483 Types of Birds

COMPARATIVE STUDY - 10 CHARTS

- CH 510 Vertebrate Hearts
- CH 511 Vertebrate Brains
- CH 512 Vertebrate Skulls
- CH 513 Vertebrate Hind Limbs
- CH 513A Vertebrate Forn Limbs
- CH 514 Vertebrate Girdles
- CH 515 Vertebrate Urinogenital system
- CH 516 Vertebrate Embryos
- CH 517 Vertebrate Arterial arches Circulation
- CH 518 Vertebrate Genital & venous system

EVOLUTION - 5 CHARTS

- CH 521 Animal Kingdom-II (Vertebrates)
- CH 521A Animal Kingdom-I (Invertebrates)
- CH 522 Evolution of Man
- CH 525 Phylogeny of Horses
- CH 526 Five Kingdom Classification



CH 431

Zoology Charts size 75x100cms. on Black Raxine

MAMMALS -RAT (27 CHARTS)

CH 485 Rat External Characters
 CH 486 Rat General Anatomy
 CH 487 Rat Digestive System
 CH 488 Rat Male Reproductive system
 CH 489 Rat Female Reproductive system
 CH 489A Rat Excretory System
 CH 490 Rat Arterial system
 CH 491 Rat Venous system
 CH 492 Rat Nervous system
 CH 493 Rat Respiratory system
 CH 494 Rat Skeleton System

CH 495 Rat Brain different views
 CH 496 Rat Heart different views

RABBIT - (14 CHARTS)

CH 497 Rabbit External Characters
 CH 498 Rabbit General Anatomy
 CH 499 Rabbit Digestive System
 CH 500 Rabbit Male Reproductive System
 CH 501 Rabbit Female Reproductive System
 CH 501A Rabbit Excretory System

CH 502 Rabbit Arterial System
 CH 503 Rabbit Venous System
 CH 504 Rabbit Nervous System
 CH 505 Rabbit Respiratory System
 CH 506 Rabbit Skeleton
 CH 507 Rabbit Brain Different Views
 CH 508 Rabbit Heart Different Views
 CH 509 Rabbit Skull

Dbios Ask for
Physics & Chemistry Charts

**BIO-CHEMISTRY-
total 36 CHARTS**

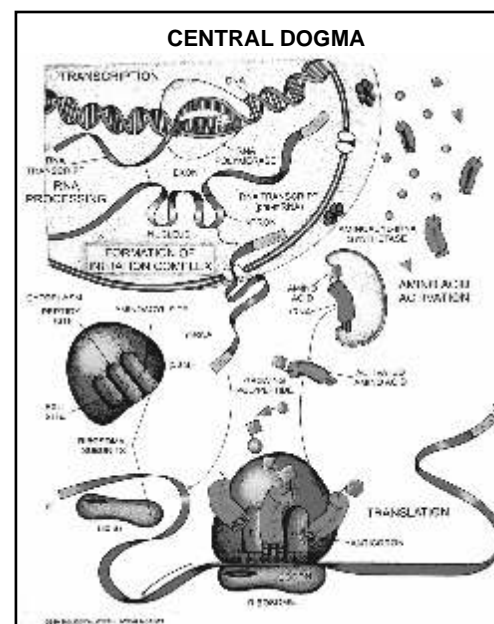
CH 04 # Structure of mitochondria
 CH 06 # Chloroplast structure
 CH 1100 Calvin Cycle (C₃Cycle)
 CH 1100A Photo Respiration (C₂Cycle)
 CH 1101 Carbohydrates - I
 CH 1102 Carbohydrates - II
 CH 1103 Lipids
 CH 1104 b oxidation of fatty acids
 CH 1108 Urea Cycle
 CH 1113 # Ribosome
 CH 1114 Transcription factors
 CH 1115 Aminoacyl-t RNA biosynthesis
 CH 1117 Carbohydrate metabolism - TCA Cycle
 CH 1118 Photosynthesis: Photosynthetic Electron Transport Chain
 CH 1119 Lac Operon
 CH 1120 Carbohydrate metabolism - Glycogenesis & Glycogenolysis
 CH 1122 Proteins (Structural Organization)
 CH 1123 Nucleic Acid - DNA
 CH 1124 Nucleic Acid -RNA
 CH 1125 Central Dogma
 CH 1127 Enzymes Detailed
 CH 1128 Carbohydrate metabolism - Glycolysis
 CH 1129 DNA Protein interaction
 CH 1130 Carbohydrate metabolism - Gluconeogenesis
 CH 1133 C₄ Cycle and CAM Plants
 CH 1134 Biosynthesis of Triglycerides & Cholesterol
 CH 1135 Biosynthesis of saturated Fatty Acids
 CH 1136 Essential & Non Essential Amino Acid
 CH 1137 Amino Acid Metabolism
 CH 1139 Bacterial Genetic Transformation
 CH 1140 Hershey - Chase Experiment

CH 1142 Mechanism of Blood Coagulation
 CH 1143 Hormones and their Physiological Roles
 CH 1144 Biochemical Aspects of Diabetes Mellitus
 CH 1145 ABC Transporters
 CH 1146 Phosphotransferase System (PTS)

**BIO- TECHNOLOGY-
total 40 CHARTS**

CH 10 # DNA-Structure
 CH 18 # Mendelian Laws of Inheritance
 CH 22A Mutations and chromosomal Aberrations
 CH 22B # Linkage and Crossing Over
 CH 1151 Method of sterilization
 CH 1152 Microbial Species and Strains
 CH 1153 Hypersensitive Reactions
 CH 1154 Immune Response to an Infection
 CH 1155 Blotting Techniques
 CH 1156 DNA Replication
 CH 1157 HIV Life Cycle
 CH 1158 Genetic Code
 CH 1159 Prokaryotic Gene Expression
 CH 1160 The immune System
 CH 1161 Antigen - Antibody Interactions
 CH 1162 Cell Culture (Primary & Secondary)
 CH 1163 Genetic Engineering
 CH 1164 Recombinant DNA Technology
 CH 1165 Gene Cloning and Transfer
 CH 1166 Transgenic Animals
 CH 1167 Environmental Biotechnology
 CH 1169 Gene Interactions
 CH 1170 Genetic Disorders
 CH 1171 Microbial Genetics

CH 1172 Immunoglobulin Structure
 CH 1173 B & T Lymphocytes
 Ch1174 Humoral & Cell Mediated Immunity
 CH 1175 PCR (Polymerase Chain Reaction)
 CH 1176 Complement System
 CH 1177 MHC Clan- I Molecule
 CH 1178 MHC Clan- II Molecule
 CH 1179 DNA Repair Mechanism
 CH 1179A DNA Finger Printing
 CH 1180 Monoclonal Antibody Production
 CH 1181 Nuclear Splicing
 CH 1183 Yeast Artificial Chromosome
 CH 1184 Gene Therapy
 CH 1186 Retroviruses & Retroposons
 CH 1187 Transposons
 CH 1188 Signal Transduction



CH 1125

These Charts On Black Raxine.

Bio Chemistry, Bio Technology Charts size 75x100cms. on White Raxine

Human /Zooloogy/ Botany Model s

HUMAN MODELS

- DHM 01 Torso Sexless 90 cms
- DHM 02 Torso Male 90 cms
- DHM 03 Torso Female 90 cms
- DHM 04 Torso Small
- DHM 05 Skeleton (Fiber Glass) with Stand
- DHM 05A Human Skeleton Big (Without stand)
- DHM 06 Articulated Imported Skeleton
- DHM 06A Imported Loose Skeleton (Bones)
- DHM 07 Brain 2 Parts
- DHM 07A Brain 8 Parts
- DHM 08 Human Ear
- DHM 08A Big Ear
- DHM 09 Human Eye
- DHM 09A Big Eye
- DHM 10 H. Tooth 2 Parts (Molar)
- DHM 11 Human Heart 2 Parts
- DHM 11A Big Heart
- DHM 12 Human Lung
- DHM 13 Human Liver
- DHM 14 Stomach
- DHM 15 Kidney
- DHM 16 Human Reproductive Male
- DHM 17 Human Reproductive Female
- DHM 18 Human Digestive
- DHM 19 Human Circulatory
- DHM 20 Human Nervous
- DHM 21 Human Respiratory
- DHM 22 Human Excretory
- DHM 23 Human Skin
- DHM 24 Muscular System

BOTANY MODELS

- DBM 01. Typical Plant Cell.
- DBM 02. Mitosis Plant Cell Division.
- DBM 03. Meiosis Plant Cell Division.
- DBM 04. Root T.S. Monocot.
- DBM 05. Root T.S. Dicot.
- DBM 06. Dicot Stem.
- DBM 07. Stem T.S. Monocot.
- DBM 08. Leaf T.S. Monocot.
- DBM 09. Leaf T.S. Dicot.
- DBM 10. Typical Flower on Board.
- DBM 11. Flower on Stand

ZOOLOGY MODELS

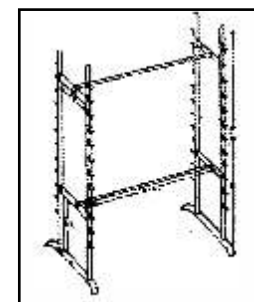
- DZM 01. Typical Animal Cell.
- DZM 02. D.N.A. (Deoxyribo Nucleic Acid).
- DZM 02A DNA helical Model on Stand
- DZM 03. R.N.A. (Ribo Nucleic Acid).
- DZM 04. Amoeba Mounted on Board.
- DZM 05. Paramecium Mounted on Board.
- DZM 06. Euglena
- DZM 07. Hydra
- DZM 08. Rat Anatomy
- DZM 09. Rabbit Anatomy
- DZM 10. Frog Anatomy
- DZM 11. Cockroach Anatomy



DHM 06 Human Skeleton
Size: 170cm. life size

Biological Lab Items

- DI 01. O.H.P. Projector twin bulb
- DI 02. Projection screen wall type
- DI 03. Projection screen Tripod Model
- DI 04. For keeping charts in horizontal position. Each chart rests on Two pegs fixed horizontally. The rack is made of metallic pipes and rods. All folding as per diagram.
(a) Capacity for keeping 24 Charts (b) Capacity for keeping 36 Charts
- DI 05 Camera Lucida
- DI 06 Dissection Box (17 Instruments)
- DI 07 Klinostat
- DI 08 Dissecting Microscope Brass Parts, Superior Quality (In Thermocole Box)
- DI 09 Compound Microscope Two eyepiece 10x, 15x & two objectives 10x, 45x, with fixed condenser
- DI 10 Medical Microscope With Two eyepiece 10x, 15 x & three objectives 10x, 45x & 100x oil immersion & fitted With Mechanical stage



DI 04.



DI 06



DI 07



DI 08



DI 09



DI 10

Imported Slides Zoology (Set of 50 in Box)

| | | |
|--------------------------------|------------------------------------|---------------------|
| C01 Mammal Taste Bud | C18 Hydra W.m | C35 Daphnia |
| C02 Mammal Blood | C19 Hydra With Bud,w.m | C36 Cardiac Muscle |
| C03 Meiosis (Locust) | C20 Skeletal Muscle | C37 Spinal Cord |
| C04 Mammal Artery | C21 Mammal Blastula | C38 Esophagus |
| C05 Mammal Vein | C22 Mammal Hair | C39 Trachea |
| C06 Animal Cell | C23 Mammal Ovary | C40 Stomach |
| C07 Euglena | C24 Fibro Cartilage | C41 Planaria |
| C08 Mammal Lungs | C25 Simple Cuboidal Epithelium | C42 Mammal Skin |
| C09 Mammal Appendix | C26 Stratified Squamous Epithelium | C43 Small Intestine |
| C10 Mammary Gland | C27 Ciliated Epithelium | C44 Duodenum |
| C11 Mammal Thymus Gland | C28 Adipose Tissue | C45 Jejunum |
| C12 Mammal Adrenal Gland | C29 Hyaline Cartilage | C46 Large Intestine |
| C13 Mammal Pituitary Gland | C30 Mammal Tooth | C47 Nerve Cell |
| C14 Paramecium W.m | C31 Elastic Cartilage | C48 Kidney |
| C15 Paramecium Fission,w.m | C32 Frog Blood Smear | C49 Ureter |
| C16 Paramecium Conjugation,w.m | C33 Smooth Muscles | C50 Mammal Rectum |
| C17 Mammal Nerve | C34 Skeleton Muscle | |

**Available in
Sets only**

Imported Slides Botany (Set of 25 in Box)

| | | |
|---------------------|-------------------------|----------------------------|
| 1 Volvox | 10 Monocot Stem C.S. | 19 Pollen Germination W.M. |
| 2 Nostoc | 11 Monocot Root C.S. | 20 Mitosis Onion Root |
| 3 Spirogyra | 12 Dicot Root C.S. | 21 Xylem |
| 4 Chlamydomonas | 13 Dicot Stem C.S. | 22 Phloem |
| 5 Euglena | 14 Dicot Leaf C.S. | 23 Parenchyma |
| 6 Yeast | 15 Spirogyra Vegetative | 24 Sclerenchyma |
| 7 Mucor | 16 Bacteria Bacillus | 25 Rhizopus |
| 8 Penicillium | 17 Bacteria Coccus | |
| 9 Monocot Leaf C.S. | 18 Onion Stoma | |

Ask For other Microscopic Slides

Dbios zoology Digital MicroCharts

Mounted Framed on board

Size 12"x 18".

| | | | |
|--|------------------------------------|--|--------------------------|
| 1. Amoeba Proteus WM. | 14. Sponge Spicules. | 28. Daphnia. | 41. Striated Muscle. |
| 2. Entamoeba Histolytica WM. | 15. Hydra WM. | 29. Anopheles Male WM. | 42. Unstriated Muscle. |
| 3. Euglena. | 16. Obelia Colony WM. | 30. Anopheles Female WM. | 43. Columnar Epithelium. |
| 4. Malaria Parasite (in Human Blood) | 17. Liver Fluke TS. | 31. Culex Male WM. | 44. Ciliated Epithelium. |
| 5. Malaria Parasite (development Zygote In Mosquito) | 18. Liver Fluke WM. | 32. Culex Female WM. | 45. Cuboidal Epithelium. |
| 6. Mono Cysts | 19. Planaria Wm. | 33. Bed Bug WM. | 46. Cardiac Muscles. |
| 7. Paramecium WM. | 20. Planaria TS. | 34. Housefly Male WM. | 47. Nerve Flukes. |
| 8. Paramecium In Fission. | 21. Tape Worm Scolex Wm. | 35. Housefly Female WM. | 48. Mammary Gland. |
| 9. Paramecium Conjugation. | 22. Tape Worm Proglottis. | 36. Housefly Egg, Larva, Pupa & Mouth Parts. | 49. Pituitary Gland. |
| 10. Plasmodium Vivax. | 23. Ascaris Male TS. | 37. Cockroach M.P. | 50. Thyroid Gland. |
| 11. Plasmodium Malaria. | 24. Ascaris Female TS. | 38. Rat Fluke WM. | 51. Thymus Gland. |
| 12. Plasmodium Falciparum. | 25. Waucheria Bancrofti (filaria). | 39. Head Louse. | 52. Salivary Gland. |
| 13. Trypanosoma. | 26. Earthworm TS. | 40. Animal Cell. | 53. Connective Tissue. |
| | 27. Cyclops. | | |

Dbios Botany Digital MicroCharts

Mounted Framed on board

Size 12"x 18".

| | | | |
|------------------------------|-------------------------|----------------------------|-------------------------------------|
| 1. Typical Plant Cell. | 14. Dicot Stem TS. | 27. Meiosis Diplotene. | 40. Bacteria Bacillus Form. |
| 2. Allium Root Apex. | 15. Dicot Root TS. | 28. Meiosis Diakinesis. | 41. Bacteria Spirillum Form. |
| 3. Apical Stem Meristem LS. | 16. Dicot Leaf TS. | 29. Meiosis Metaphase. | 42. Rhizopus Asexual. |
| 4. Aerenchyma TS. | 17. Anther. | 30. Meiosis Anaphase. | 43. Rhizopus Sexual. |
| 5. Collenchyma TS. | 18. Pollen Grain. | 31. Meiosis Telophase-I. | 44. Puccinia Uredo On Wheat. |
| 6. Sclerenchyma TS. | 19. Mitosis Interphase. | 32. Meiosis Metaphase -II. | 45. Lichen Thallus TS. |
| 7. Xylem TS. | 20. Mitosis Prophase. | 33. Meiosis Anaphase-II. | 46. Moss Plant With Capsule. |
| 8. Phloem TS. | 21. Mitosis Metaphase. | 34. Meiosis Telophase-II. | 47. Riccia Thallus TS. |
| 9. Leaf Epidermis (stomata). | 22. Mitosis Anaphase. | 35. Meiosis Tetrads. | 48. Selaginella Strobilus LS. + WM. |
| 10. Stem Cells. | 23. Mitosis Telophase. | 36. Spirogyra Wm. | 49. Fern Leaf With Sori. |
| 11. Monocot Stem TS. | 24. Meiosis Leptotene. | 37. Chlamydomonas WM. | 50. Fern Prothallus. |
| 12. Monocot Root TS. | 25. Meiosis Zygotene. | 38. Volvox. | |
| 13. Monocot Leaf TS. | 26. Meiosis Pachytene. | 39. Bacteria Coccus Form. | |

SCIENTISTS CHARTS FRAMED ON BOARD

Laminated Framed on Board

Small Size 12"x18"

MEDIUM SIZE 16"x21"

big Size 20"x26"

Dbios, introduces for the first time, in India Big Sized multicolored photographs with their achievements in the lightened shades of the photograph to give better understanding to students to correlate famous works with scientist. Each Scientist Photographs comes with detailed descriptions in the fields of their Academics, Works, Designations, Publishing and Awards / Honours.

BIOLOGIST

- SB 01 Lamark Jean Baptist
- SB 02 Charles Robert Darwin
- SB 03 Gregor John Mendel
- SB 04 Louis Pasteur
- SB 05 P. Maheswari
- SB 07 Birbal Sahni
- SB 08 Aristotle
- SB 09 Alexander Fleming
- SB 10 Jagdish Chander Bose
- SB 29 H.G. Khorana
- SB 48 George Bentham
- SB 49 Carl Von Linnaeus
- SB 50 Hugo De-Vries
- SB 59 James Watson & Crick
- SB 60 Robert Hook
- SB 61 M.S. Swaminathan
- SB 62 Dr. Lalji Singh
- SB 63 K.V. Subba Rao
- SB 64 Samir K. Brahmachari
- SB 65 Robert Koch
- SB 66 William Harvey
- SB 67 Marcello Malpigi
- SB 68 Leeuwenhock Antonvan
- SB 69 John Cray Ventor

PHYSICIST

- SP 12 Maghnath Saha
- SP 13 Galileo Galilei
- SP 14 Issac Newton
- SP 15 Sir C.V. Raman
- SP 16 Homi Jehangir Bhabha
- SP 17 J.J. Thompson
- SP 18 Neils Bohr
- SP 20 Archimedes
- SP 23 Albert Einstein
- SP 31 Ernest Rutherford
- SP 40 Dr. Vikram Sarabhai
- SP 41 K.S. Krishnan
- SP 44 A.P.J. Abdul Kalam
- SP 46 Thomas Alva Edison
- SP 70 Raja Ramanna
- SP 71 Stephen William Hawkins
- SP 72 Rakesh Sharma
- SP 73 Max Planck
- SP 74 James Clark Maxwell
- SP 75 Wilhelm Roentgen
- SP 76 James Joule
- SP 77 Johnnes Kepler
- SP 78 Coppernicus
- SP 79 Ptolemy
- SP 80 Heike K. Onnes
- SP81 S. Chandershekar
- SP82 Satyander Nath Bose
- SP83 Benjamin Franklin

CHEMIST

- SC 24 Madam Curie
- SC 25 Friedrich Wohler
- SC 26 John Dalton
- SC 27 Gibert Newton Lewis
- SC 28 Dimitri I. Mendeleev
- SC 30 Michael Faraday
- SC 32 Alfred Nobel
- SC 35 Dr. S.S. Bhatnagar
- SC 36 Joseph Priestley
- SC 37 Humphry Davy
- SC 39 Venky Ramakrishnan
- SC 85 Robert Boyle
- SC 86 J.J. Berzelius
- SC 87 Henry Bacquerel
- SC 88 F.A. Kekule
- SC 89 Avogadro
- SC 90 James Chadwick
- SC 91 Robert Bunsen
- SC 92 Fritz Haber
- SC 93 Hermann Staudinger
- SC 94 Willard Libby
- SC 95 Linus Pauling
- SC 96 Hans Krebs
- SC 97 Stanley Miller
- SC 98 John Fenn
- SC 99 E.D. Jemmis

MATHEMATICIAN

- SP 14 Issac Newton
- SM 51 S. Ramanujam
- SM 52 Varah Mihir
- SM 53 Pascal
- SM 54 Pythagoras
- SM 55 Euclid
- SM 56 Bhasakaracharya
- SM 57 Aryabhath
- SM 58 Euler
- SM 59 C.R. Rao
- SM 60 Anand Kumar
- SM 61 Shakuntala Devi

COMPUTER PIONEER

- SCP 61 Charles Babbage
- SCP 62 Blasis Pascal
- SCP 63 Ada Augusta
- SCP 64 William Gates
- SCP 65 Thomas J Watson
- DCP 17 Dr. Vinton G. Cerf
- DCP 32 Michael Saul Dell
- DCP 35 N.R. Narayana Murthy
- DCP 43 W. Hewlett & D. Packard
- DCP 47 Larry Page & Sergey Brin
- DCP 48 Mark Elliot Zuckerberg

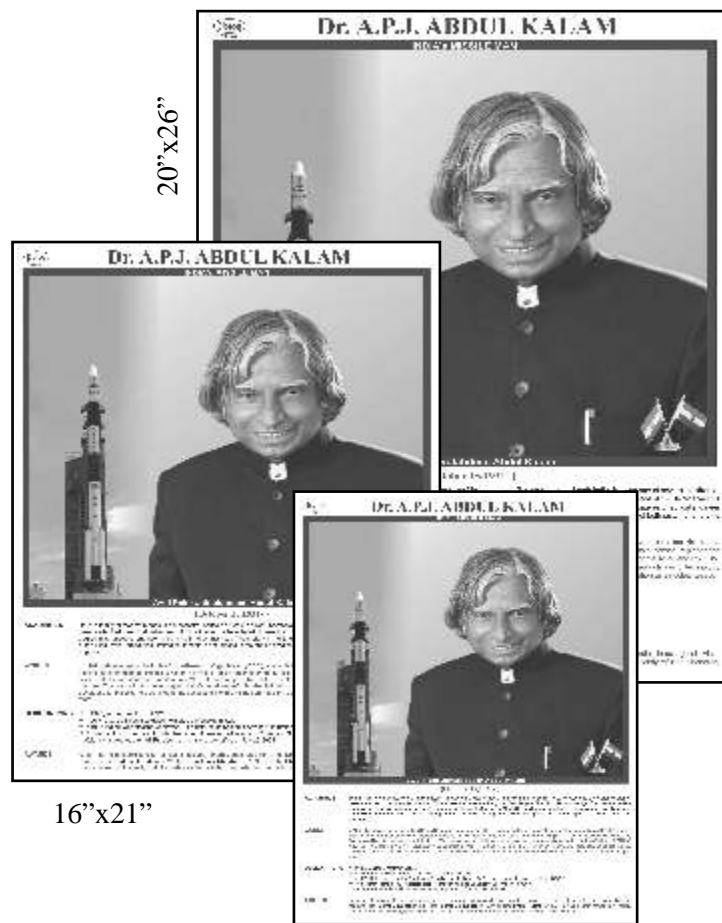
WRITERS

- DW 1 Aeosop
- DW 2 Kalidasa
- DW 3 Tulsidas
- DW 4 Shakespeare
- DW 5 John Milton
- DW 6 P.B. Shelly
- DW 7 Robert Lee Frost
- DW 8 Thomas Hardy
- DW 9 Charles Dickens
- DW10 Leo Tolstoy
- DW11 Tagore
- DW12 William Wordsworth
- DW13 T. S. Eliot
- DW14 William Blake
- DW15 John Keats
- DW16 Kabir
- Dw17 Ruskin Bond
- DW18 Mulkraj Anand
- DW19 Mahadevi Verma
- DW20 Sumitranandan Pant
- DW21 G.B. Shaw

ARTISTS

- DA 1 Sobha Singh (Painter)
- DA 2 Amrita Shergil
- DA 3 Bhimsen Joshi
- DA 4 B. B. Mukharjee
- DA 5 Leonardo
- DA 6 M.S. Subbulakshmi
- DA 7 M. B. Krishna
- DA 8 Michelangelo
- DA 9 Pablo Diego Jose
- DA10 Paul Cezanne
- DA11 Raja Ravi Varma
- Da12 Irayimman Thampi
- DA13 Shadkala Govinda Marar
- DA14 Sri Swathi Thirunal Rama
- Da15 Van Gogh

^ Ask For Scientists Portraits On Polyart Sheet Till Stock Lasts



MUST HAVE MOTIVATIONAL CHARTS / POSTERS FOR SCHOOL / HOSTEL WALLS

Scientists / Leaders other than above mentioned list can be made available

Laminated Framed on Board

Small Size 12"x18" OR MEDIUM SIZE 16"x21" OR big Size 20"x26"

LIBRARY SECTION

- DL 1 Dr. S. R. Ranganathan (Librarian)
- DL31 Melvil Dewey (Librarian)
- DL 2 Mother Teresa
- DL 3 Kalpana Chawla
- DL 4 Dr. Bhimrao Ambedkar
- DL 5 M.K. Gandhi
- DL 6 Dr. Sarvepalli Radhakrishnan
- DL 7 Rajaram Mohan Roy
- DL 8 Rabindernath Tagore
- DL 9 Swami Vivekananda
- DL10 Ishwar Chander Vidhyasagar
- DL11 Acharya Prafulla Chandra Roy
- DL12 Swami Dayananda Saraswati
- DL13 Subhas Chander Bose
- DL14 Sorojini Naidu
- DL15 Sardar Vallabhbhai Patel
- DL16 Mulana Abul Kalam Ahmed
- DL17 Guru Nanak Dev Ji
- DL18 Guru Gobind Singh Ji
- DL19 Chandra Shekhar Azad
- DL20 Gautam Buddha
- DL21 Bharat Mata
- DL22 Shaheed Bhagat Singh
- DL23 Chhatrapati Shri Shivaji Maharaj
- DL24 Lord Dhanwantri
- DL25 Maa Saraswati
- DL26 Saint Alphonsa Muttathupadathu
- DL27 Geevarghese Mar Ivanios
- DL28 Jean Henri Dunant
- DL29 Johan Galtung
- DL30 Paul Percy Harris

BEHAVIOURS

- 1. Code of Behaviour
- 2. Good Manners
- 3. Good People Skills
- 4. Good Social Skills
- 5. Good Values
- 6. The Behaviour Wheel.

PRIME MINISTER OF INDIA

ALL PRIME MINISTERS IN ONE BIG (30X40") CHART

- 1. Jawahar Lal Nehru
- 2. Gulzari Lal Nanda
- 3. Lal Bahadur Shastri
- 4. Indira Gandhi
- 5. Morarji Desai
- 6. Chaudhary Charan Singh
- 7. Rajiv Gandhi
- 8. V.P. Singh
- 9. Chandra Shekhar
- 10. P.V. Narasinha Rao
- 11. H.D. Devegowda
- 12. I.K. Gujral
- 13. A.B. Vajpajee
- 14. Manmohan Singh
- 15. Narendra Modi

PRESIDENT OF INDIA

ALL PRESIDENT IN ONE BIG (30X40") CHART

- 1. Dr. Rajinder Prasad
- 2. S. Radhakrishnan
- 3. Dr. Zakir Hussain
- 4. V.V. Giri
- 5. Fakhruddin Ali Ahmed
- 6. Neelam Sanjiva Reddy
- 7. Giani Zail Singh
- 8. R. Venkataraman
- 9. Dr. Shankar Dayal Sharma
- 10. K.R. Narayanan
- 11. A.P.J. Abdul kalam
- 12. Pratibha Devisingh Patil
- 13. Pranab Mukherjee

MANAGEMENT PERSONALITIES

- 1. Sam Walton
- 2. Warren Buffet
- 3. Lee Jaeocca
- 4. Steve Jobs
- 5. Andy Grove
- 6. Ted Turner
- 7. Jeff Bezos
- 8. Michael Gibner
- 9. Peter Lynch
- 10. Phil Knight
- 11. Katharine Graham
- 12. W. Edwards Deming
- 13. Lou Gerstner
- 14. Adam Smith
- 15. Amartya Sen
- 16. Bhai Mohan Singh
- 17. C.K. Prahalad
- 18. Claude Elwood Shannon
- 19. Dhirubhai Ambani
- 20. G.D. Birla
- 21. Henri Fayol
- 22. Indira Nooyi
- 23. J.M. Keyner
- 24. Jack welch
- 25. J.R.D. Tata
- 26. Lakshmi Mittal
- 27. Margret Cushing
- 28. Peter Drucker
- 29. Philip Kotler
- 30. Shiv Khera
- 31. Stephen R.Covey
- 32. Sumantra Ghoshal

NOBEL PRIZE WINNER

SPORTS PERSONALITIES

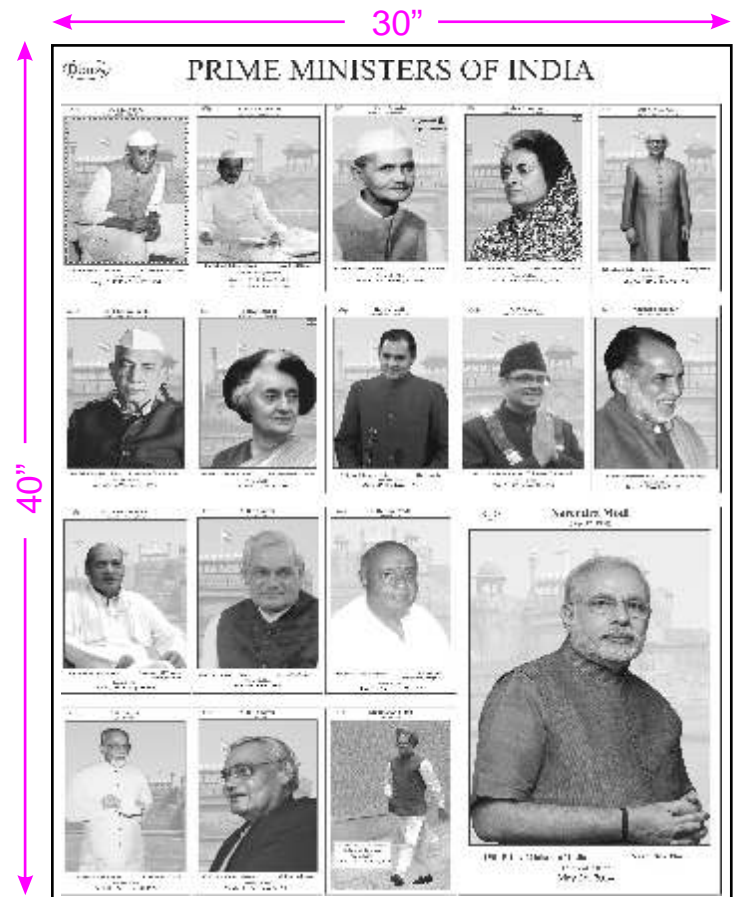
- 1. Sania Mirza
- 2. Saina Nehwal
- 3. Sachin Tendulkar
- 4. Pankaj Advani
- 5. P.T. Usha
- 6. Viswanathan Anand
- 7. Major Dhyan Chand
- 8. Baichung Bhutia
- 9. Mary Kom
- 10. Milkha Singh
- 11. MS Dhoni

CHIEF MINISTER OF INDIAN STATES

- 1. Sheikh Abdulla
- 2. Farooq Abdulla
- 3. Omur Abdulla
- 4. Mamta Benarjee
- 5. Akhilesh Yadav
- 6. Bhupinder Singh Hooda
- 7. Prakash Singh Badal
- 8. Virbhadra Singh
- 9. Manohar Lal Khattar

BIG CHARTS 30"x40" SYNTHETIC LAMINATED & ATTACHED WITH PLASTIC ROLLERS

- BgC 1 Famous Indian Scientists
- BgC 2 Great Indian Scientists
- BgC 3 Pioneers in Chemistry
- BgC 4 Pioneers in Biology
- BgC 5 Pioneers in Physics
- BgC 6 Prime Ministers of India
- BgC 7 President of India
- BgC 8 Computer Pioneers
- BgC 9 Famous Writers
- BgC 10 Famous Mathematician
- BgC 11 Famous Artist
- BgC 12 Sports Personality
- BgC 13 Bharat Ratan I
- BgC 14 Bharat Ratan II
- BgC 15 Bharat Ratan III
- BgC 16 Indian Nobel Prize Winners



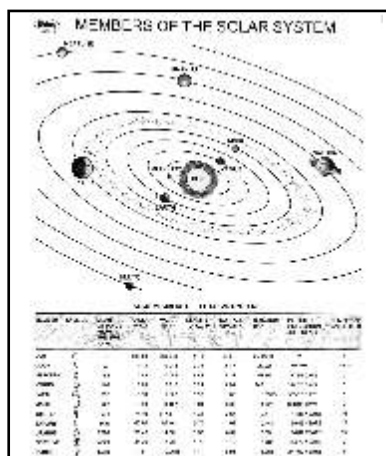
^ Ask For Scientists Portraits On Polyart Sheet Till Stock Lasts

Scientists / Leaders other than above mentioned list can be made available

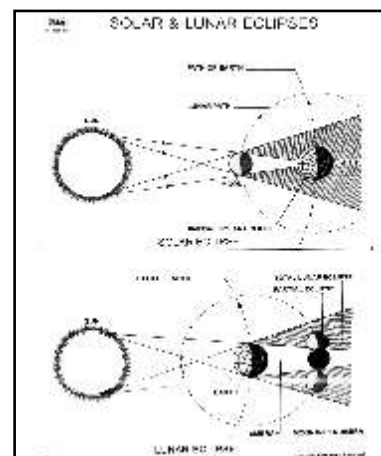
GEOGRAPHY CHARTS & MODELS

Geography- TOTAL 17 Charts

size 75x100cms. on White Raxine



- CH 531 Life cycle of Rock
- CH 532 Volcano & its types
- CH 533 Weathering & Erosion
- CH 534 Formation of Himalayas
- CH 535 Earthquakes
- CH 536 Glaciers
- CH 537 Development of River
- CH 538 Structure of earth
- CH 539 Geological time scale
- CH 540 Life cycle of Sun
- CH 56 Ozone Layer
- CH 57 Green House Effect
- CH 58 Seasons*
- CH 60 Water Cycle*
- CH 62 Carbon Cycle*
- CH 1095 Solar System
- CH 1096 Solar & Lunar Eclipse
- CH 1097 Galaxies

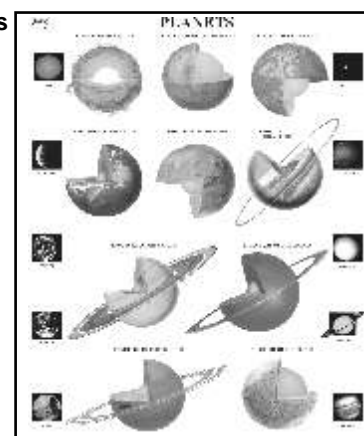


Geography Laminated Charts

Size 50x 65 cms. Laminated and Attached with Durable Strips
Size 50x 65 cms. Laminated & Framed on NU-Wood Board

- DG 1. Galaxies
- DG 2. Stars
- DG 3. Solar System
- DG 4. Sun & Moon
- DG 5. Planets
- DG 6. Pre Historic earth
- DG 7. Formation of the Himalayas
- DG 8. Dinosaurs
- DG 9. Minerals
- DG 10. Volcanoes

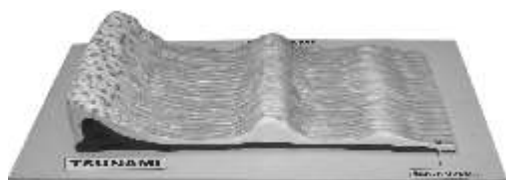
- DG 11. Formation of coal
- DG 12. Glaciers
- DG 13. Development of River
- DG 14. Green House Effect
- DG 15. Ozone Hole
- DG 16. Earth's Coordinates and Map Projections
- DG 17. Earthquake
- DG 18. Structure of Earth.
- DG 19. Seasons of The Year
- DG 20. Vegetation and Biosphere



Geological Models

Fiber Glass 3D Models on Wooden Board

- DGM 1. Earth quake
- DGM 2. Rocks & Volcanoes
- DGM 3. Metamorphic Rocks
- DGM 4. River in Actions
- DGM 5. Fault & Fold
- DGM 6. Volcano Erupting
- DGM 7. Ignition of Rocks
- DGM 8. Tsunami
- DGM 9. Plate Boundaries
- DGM 10. Structure of Earth
- DGM 10A. Structure of Sun
- DGM 11. Space Shuttle (in Acrylic Case)
- DGM 12. Satellite Model



DGM 8



DGM 11

Geographical Working Models

- DGM 15. Solar System (Big)
- DGM 15a. Solar System (Small)
- DGM 16. Phases of Moon
- DGM 17. Day & Night
- DGM 18. Solar & Lunar Eclipse
- DGM 19. Seasons Model
- DGM 23. Solar Water Heater model
- DGM 25. Solar Energy Kit (8 in 1)
- DGM 26. Solar Cooker (Small) 12"x12"
- DGM 27. Wind Mill
- DGM 28. Wind Wane
- DGM 29. Theodolite Model

Geological show cases

- DGS 11. Rocks & Minerals Set of 50
- DGS 12. Rocks Set of 50
- DGS 13. Minerals Set of 50
- DGS 20(a). Small Size (Approx 1") Rocks Set of 25.
- DGS 20(b). Small Size (Approx 1") Minerals Set of 25.
- DGS 21(a). Medium Size (Approx 2") Rocks Set of 25.
- DGS 21(b). Medium Size (App 2") Minerals Set of 25.
- DGS 22(a). Big Size (App 3") Rocks Set of 25.
- DGS 22(b). Big Size (App 3") Minerals Set of 25.

*These Charts Are On Black Raxine

Geography Charts size 75x100cms. on White Raxine

NOTE: Our Mathematic kits are provided with complete literature/ Manual for all the above experiments that can be performed in the lab.

PRIMARY MATHEMATIC KIT (21 items)

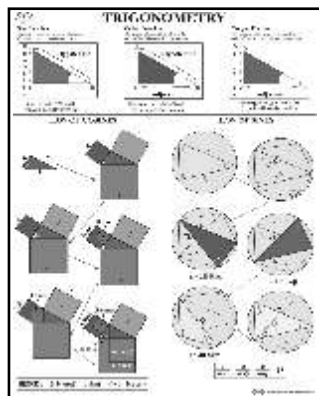
| | |
|----------------------------------|---|
| Dummy Clock | For Teaching Reading of Time on A Clock |
| Designer Fraction | Set F 72 Triangles In 3 Colours |
| Place Value Game | To Determine The Place Value of Numbers |
| Fraction Burger Magnetic | To Explain of Fraction, numerator & Denominator, Equivalent, Subtraction, Multiplication, Division |
| Plastic Moulds | Geometrical Shapes Set of 12 With Clay |
| Junior Pythagoras Theoram | To Verify Pythagoras Theoram By An Activity |
| Pearl Marbles | To Understand The Probablity With Balls, Set of 4 Different Colours 400 No. Marbles |
| French Fries Kit | It Can Be Used To Explain The Idea of Addition, Subtraction, Multiplication & Division. |
| Decimal Dog | It Can Be Used To Explain Knowledge of Equivalent, Addition, Subtraction, Multiplication & Division.of Decimals |
| Roman Number Kit | To Teach Roman Number With The Help of Roman Numerical Printer Tiles & Teacher Magneti Roman Kit |
| Geo Board | To Demonstrate The Concept of Perimeter By Actvivity Method By Rubber Band or To Be Used ob ohp |
| Sit & Set | It Is An Interesting Puzzle To Understand Shpes, Size, Combination of Different Flat Figures |
| Inter Locking Cubes | Set of 64 Cubes |
| Dummy Cheque Book | To Explain The Value of Cheque & How To Deposit It |
| Dummy Currency Note | To Explain Different Type of Our National Currency |
| Shapes | To Explain Different Plastic Flat Shapes or It Is Used As A Stencils Set of 10 In Different Colours |
| Dices | To Understand The Concept of Probability & To Explain Numerical Number, Roman Number, Shapes Set of 6 |
| Set of Cup | To Explain Volume |
| Skip Counting Board | Derivation of Pie |
| | Abacus |



SENIOR MATHEMATIC KIT (21 items)

| | |
|--|---|
| Pattern Of Triangle | To Teach Making of Pattern With Triangles of Different Colours |
| Power 2 | To Understand The Concept of Square Number, By Using The Same Article Student Can Learn Cartisian Coordinates |
| Tangram | It Is A Popularly Known As Famous Chenese Puzzle |
| Algebra Identity | To Demonstrate The Complex Identities In A Similar Way |
| Mensuration Kit | To Teach Area of Parallogram, Area of Triangle, are of Rhombus. Area of TrapeZium , Mid Point Theoram, Area of Circle, Properties of Parallogram, Quadrliteral Formed By The Mid Point of A Quadertrial, Algebric Identity Set of Cubes |
| Ring of Theorem | This is an Amazing Innovation For Circle Rlates Theoramsangle In Semi Circle, Segment, Center Angle Properties |
| Hollow Sphere | To Demonstrate The Complicated Concept of Calculating Mass of Hollow Sphere |
| Algle Sum Property of Triangle | Magnetic Triangle With Its Angles Cutout to Demonstrate Angle Sum Property of a Triangle |
| Algle Sum Property of Quadrilateral | Quadrilateral With Its Angles Cutout to Demonstrate Angle Sum Property Of A Quadrilateral |
| Exterior Angle of Regular Polygon | To Explain the Sum of Exterior Angle of Polygon is 360 Degree |
| Construction of Parabola | To Teach An Equality Marked Points of Division are Joined Together to Construct Parabola |
| Triangle Kit | To Teach Congruency Of Triangle Classification By Their Angles & Side |
| Pythagoras Theoram Senior | To Teach Pythagoras Theoram by Reverse Method |
| Cylinder Hollow | To Demonstrate The Complicated Concept of Calculating Mass of Hollow Cylinder |
| Geometry Kit | It Helps To Make All Kinds of Quasrilateral, Polygons By Arranging Multipurpose Strips |
| Black Board Instruments Box | Containing pair of set squares protractor, compass, divider, scale & duster. Made of plastic |
| Magnifying Measure | To Teach Metric Conversion of Inches, cm & mm |
| Geometrical Stencil | Plane Figures of 10 Different Shapes |
| Conic Section | Set of 8 Parts : Parabola, Hyperbola, Circle & Ellipse |
| Cusinaire Kit | Cusinary strips (Group Activity) |
| Clinometer Compass | |

Math Laminated Charts



DM 7

Size: 50x65 cms

- DM 1. Units of Measurement
- DM 2. Areas
- DM 3. Volumes
- DM 4. Surface Areas
- DM 5. Number Systems
- DM 6. Mathematic Symbol
- DM 7. Trigonometry
- DM 8. Triangles
- DM 9. Time Knowledge
- DM 10. Shapes
- DM 11. Profit & loss
- DM 12. Primes & their Factors

**Laminated & Fitted with Plastic strips
Laminated & Mounted on Board**

- DM 13. Polygons
- DM 14. Permutation
- DM 15. Angles Sum Property
- DM 16. Quaratic Equations
- DM 17. To Prove Sin (x+y)
- DM 18. Venn Diagram
- DM 19. Statistics Graph Display-I
- DM 20. Statistics Graph Display-II
- DM 21. Graphing A Line
- DM 22. Fractions
- DM 23. Find the Area of a Circle

Look for MATHEMATIC Pioneers at Page No. 8

M1 : Drawing board (Made of soft wood) 12X18"

M2 : Mathematical Wooden Shapes Basic Set of 12

Size 50x 65 cms. Laminated and Attached with Durable Strips
 Size 50x 65 cms. Laminated & Framed on NU-Wood Board

BASIC COMPUTER

- CH 2101 Summary of Dos Commands
- CH 2102 Dos Commands
- CH 2103 Storage Devices
- CH 2104 Memories
- CH 2108 Input Devices
- CH 2109 Output Devices
- CH 2121 Fundamentals of 'C-I
- CH 2122 Fundamentals of 'C-II
- CH 2123 Fundamentals of 'C-III

NETWORKING

- CH 2107 Network Topologies
- CH 2110 Modes & Forms of Data Transmission
- CH 2111 Transmission Medias
- CH 2112 Types of Computer Networks
- CH 2113 Communication Switching Techniques

A FEW PREVALENT SOFTWARES

- CH 2115 Microsoft Word
- CH 2116 Microsoft Excel
- CH 2117 Microsoft Power Point
- CH 2118 The Visual Basic Ide
- CH 2119 The Tool Bars of Vb
- DCH 01 Early Generation Computer.
- DCH 02 First Generation Computer.
- DCH 03 Second Generation Computer : Transistor.
- DCH 04 Third Generation Computer : Post 1960's.
- DCH 05 History of Internet.
- SCP 61 Charles Babbage - Father of Computer
- SCP 64 William Bill Gates - Founder of Microsoft
- DCP 17 Dr. Vinton G. Cerf - Father of Internet
- DCP 47 Larry Page and Sergey Brin - Google.com

Computer- total 25 Charts



CH 2108 INPUT DEVICES

See Computer Pioneers on Page No.(8)

ENGLISH LEARNING CHARTS

English Learning - TOTAL 16 Charts

CONVERSATION IN ENGLISH

- DEN 15 About Weather
- DEN 16 Asking Directions
- DEN 17 Asking / Telling the Time
- DEN 18 In the School
- DEN 19 Personal Health/Common Health Problem
- DEN 20 Telephonic Conversation
- DEN 21 With a Guest at Home

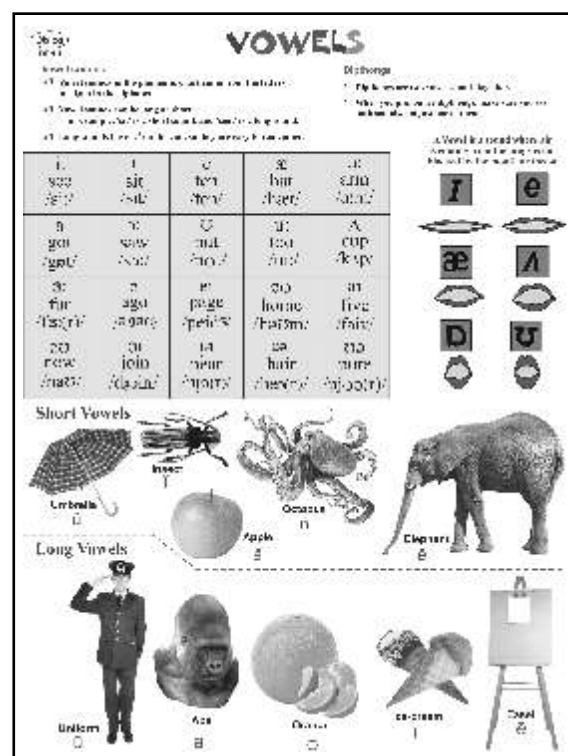
PHONETICS SYMBOLS

- DEN 1 Vowels with examples
- DEN 2 Consonants with examples

PARTS OF SPEECH

- DEN 5 Nouns with examples
- DEN 6 Pronouns with examples
- DEN 7 Adjectives with examples
- DEN 8 Verbs with examples
- DEN 9 Adverb with examples
- DEN 10 Preposition with examples
- DEN 11 Conjunctions with examples

Size 50x 65 cms. Laminated and Attached with Durable Strips
 Size 50x 65 cms. Laminated & Framed on NU-Wood Board



All Dbios charts are covered under Copyright© Act. Any unauthorized reproduction of the charts is illegal & offence.

Also See Famous Writer's on Page No. (8)

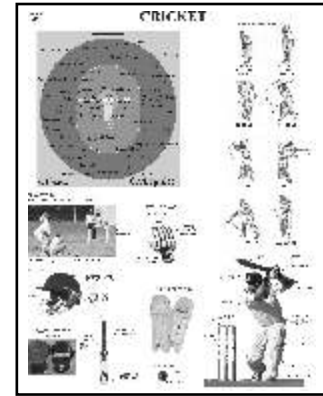
Size 50x 65 cms. Laminated and Attached with Durable Strips
 Size 50x 65 cms. Laminated & Framed on NU-Wood Board

Music (7) Charts

- DMU 1. Electronic instruments
- DMU 2. Key board instruments
- DMU 3. Musical Notation
- DMU 4. Orchestras
- DMU 5. Percussion Instruments
- DMU 6. Stringed instruments
- DMU 7. Wind instruments

Sports (9) Charts

- DS 1. Athletics
- DS 2. Baseball
- DS 3. Basketball
- DS 4. Cricket
- DS 5. Football
- DS 6. Hockey
- DS 7. Racket Sports
- DS 8. Soccer
- DS 9. Volleyball



DS 4

On Demand Charts in Regional / Foreign Language for the Minimum of 50 Charts Each Topic.

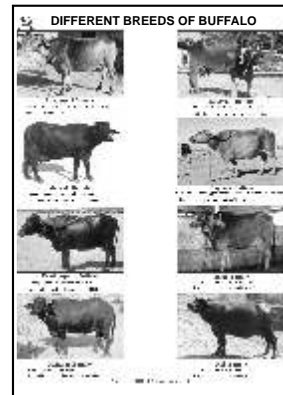
ANIMAL HUSBANDARY / Agriculture Size 50x 65 cms. Laminated and Attached with Durable Strips

A Unique Collection of Charts are printed on light weight Styrene plastic & an eyelet is pierced on top for hanging purpose. Size 50x 65 cms. Laminated & Framed on NU-Wood Board

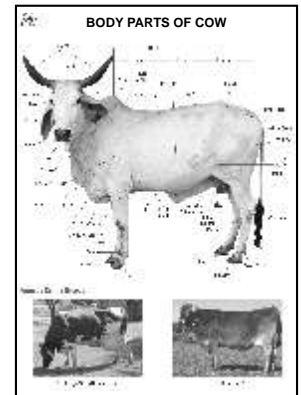
- CH 1701 Composition of rations for layers at different age groups
- CH 1702 Vaccinations schedule for dairy animals
- CH 1703 Dairy cattle shed map for 10 buffaloes/cows & their calves
- CH 1704 Composition of rations for different classes of pigs
- CH 1705 Oestrous cycle for different categories of animals
- CH 1706 Composition of concentrate mixture according to level of milk production
- CH 1707 Composition of mineral mixture (without salt) for dairy animals
- CH 1708 Composition of Broiler Ration
- CH 1709 Food Habits of Birds
- CH 1710 Food Habits of Animals
- CH 1711 Different Breeds of Cows
- CH 1712 Different Breeds of Buffalo
- CH 1713 Appliances of Handling Animals
- CH 1714 Casting of Farm Animals
- CH 1715 Methods of Identification
- CH 1716 Disbudding & Dehorning
- CH 1717 Methods of Milking & Cross Section of Cow's Udder

- CH 1718 Poultry Farm Equipments
- CH 1719 Poultry House
- CH 1720 Parts of Chicken & their Combs
- CH 1721 Body Parts of Duck & Turkey
- CH 1722 Body Parts of Pig
- CH 1723 Body Parts of Sheep
- CH 1724 Body Parts of Cow

First Time in India.



CH 1711

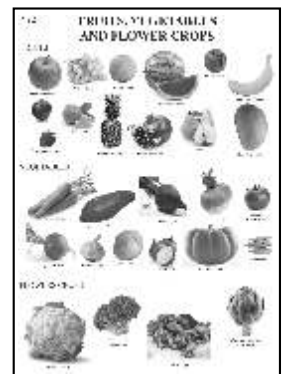


CH 1724

- CH 1736 Cereal, Pulses and Oil Seed Crops
- CH 1737 Crops Rabi, Kharif And Summer
- CH 1738 Different Implements or Cultivation of Field
- CH 1739 Different Propagation Method
- CH 1740 Fruits, Vegetables and Flower Crops
- CH 1741 Irrigation System
- CH 1742 Mendelian Genetics Monohybrid and Dihybrid Cross
- CH 1743 Meteorological Instrument
- CH 1744 Plant Diseases
- CH 1745 Surveying and Leveling Instrument
- CH 1746 Tools and Implemetnsfor Horticultural Crops



CH 1737



CH 1740

Ask for Charts on Forestry - 45 Chats

Management CHARTS FRAMED ON BOARD



Small Size 12"x18"

MEDIUM SIZE 20"x26"

big Size 30"x40"
attached with white roller

Laminated Framed on Board

Motivational charts another new addition from the house of Dbios These charts are not only useful in management institutes but also to all educational institutes and schools However, these charts can be hanged on walls of hostels as well as School corridors. You can select from the below mentioned details.

Values charts

1. Cooperation
2. Freedom
3. Happiness
4. Honesty
5. Humility
6. Love
7. Peace
8. Respect
9. Responsibility
10. Simplicity
11. Tolerance
12. Unity

Basic skills charts

1. A Successful Life
2. B. Tech
3. Customer Service
4. Engineer
5. Good Manner
6. Hard Work
7. Leadership
8. Management
9. MBTI Personality test
10. Personal Interview
11. Personality test
12. Project Management
13. Quality
14. Recognize Your Creator
15. Resume preparation
16. Self Improvement For Student
17. The Group Discussion
18. The Written Test
19. Think
20. Time Management
21. Body Language

22. Entrepreneurs who changed the world
23. Entrepreneurship
24. Entrepreneurship Ideas
25. Incubation
26. Influencing People
27. Body Building
28. Presentations Skills
29. Responsibilities of faculty members
30. Student Ideals
31. Saving lives
32. Student Welfare
33. Moral Values
34. Never ever give up

Teacher charts

1. Teacher are lousy mind Readers
2. Teacher don't have clones
3. Teacher are not machines
4. Teacher are not Magicians
5. Teachers don't have x-ray vision
6. Teachers don't have magic wands

Behaviours charts

1. Code of Behaviour
2. Good Manners.
3. Good People skills
4. Good social skills
5. Good values
6. The Behaviour wheel.

Motivational Poster charts

1. The Top 6way's to Deny you have a Problem.
2. Find the reason to stay home from School.
3. Study Skills
4. Overconfidence

30"x40"

BODY LANGUAGE

What is Body Language?
Your body language is the way in which you show your feelings or thoughts to other people by means of the position or movements of your body

Types of Body Gestures

- Under pressure:** fingers are placed in the mouth
- Disapproval Position:** head is down; it signals that the attitude is negative
- The Steeple:** used by bosses or superiors and shows confidence
- The glasses-in-mouth gesture:** is used when delaying a decision
- Telling lie:** nose to hide the truth
- Positive Approach:** Eye contact, facing the person heart-to-heart
- Negative Approach:** Standing at an angle and not facing the person
- Superior type:** both arms in front of the body with both thumbs up to show that the user is 'cool'
- Claiming ownership:** Both legs on top of the table
- Boredom:** head is fully supported by the hand
- The partial arm barrier:** lacking in self-confidence or defending oneself from perceived threat
- Interested:** closed hand resting on the cheek, often with the index finger is pointing upwards

Entrepreneurship Ideas

| Business Ideas for Mechanical Engineers | | | Business Ideas for Computer Engineers | | |
|---|----------|------------|---------------------------------------|----------|----------|
| Travel | Auto | Auto-parts | Software | Software | Software |
| Facilities | Hardware | Web | Software | Software | Software |
| Hardware | Hardware | Hardware | Software | Software | Software |
| Hardware | Hardware | Hardware | Software | Software | Software |

| Business Ideas for Electronics Engineers | | | Business Ideas for Mechanical Engineers | | |
|--|----------|----------|---|----------|----------|
| Software | Software | Software | Software | Software | Software |
| Software | Software | Software | Software | Software | Software |
| Software | Software | Software | Software | Software | Software |
| Software | Software | Software | Software | Software | Software |

| Business Ideas for Electrical Engineers | | | Business Ideas for Civil Engineers | | |
|---|----------|----------|------------------------------------|----------|----------|
| Software | Software | Software | Software | Software | Software |
| Software | Software | Software | Software | Software | Software |
| Software | Software | Software | Software | Software | Software |
| Software | Software | Software | Software | Software | Software |

20"x26"

Entrepreneurs who changed the World

| Top Entrepreneurs of World | Top Entrepreneurs of India |
|--|---|
| James Watt's improvements to the Newcomen steam engine brought the Industrial Revolution in world | Dhirubhai Ambani, founded Reliance Industries |
| Mark Elliot Zuckerberg is co-founder of the social networking website Facebook | "Dr. Bhanu Prasad" founded Cipla, oldest pharmaceutical company in India in 1955 |
| "Bill" Gates co-founded the Microsoft, the world's largest computer software company | Azim Hashim Premji is the chairman of Wipro Limited |
| Thomas Edison developed the phonograph, the motion picture camera, and a long-lasting, practical electric light bulb | Subrata Roy is the founder of the Sikkim the second largest employer in India after the Indian Railways |
| Steven Paul "Steve" Jobs was an American entrepreneur, co-founder, chairman, and CEO of Apple Inc. | Penny Lal Roy is an Indian journalist and media personality. He is the co-founder of NDTV |
| Levi Strauss was a German-American businessman who founded the first company to manufacture blue jeans | Dr. C. R. Reddy founded the first corporate chain of hospitals in India - the Apollo Hospitals Group |

12"x18"

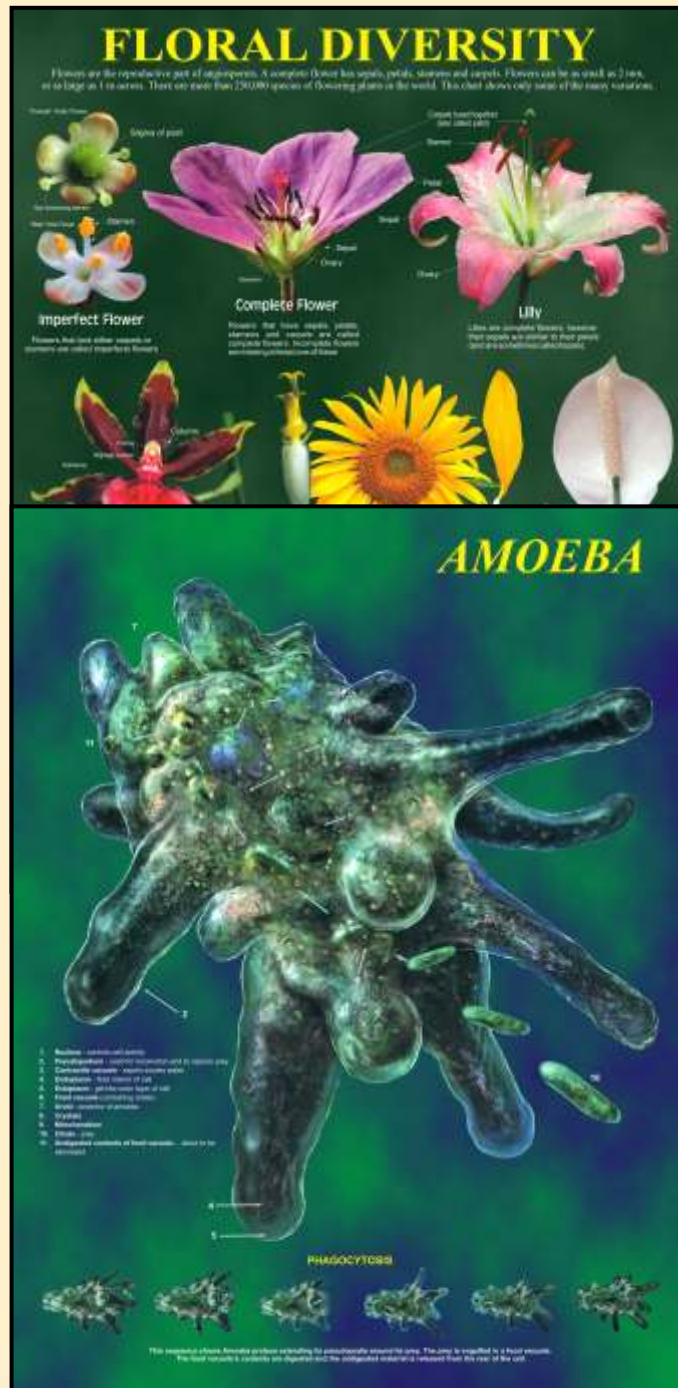
MUST HAVE MOTIVATIONAL CHARTS / POSTERS FOR SCHOOL / HOSTEL WALLS

Scientists / Leaders other than above mentioned list can be made available

Impressive, Stunning, Valuable & the best **48 Charts** as per **International Standards**

Laminated & Framed on Board Size 20x26"

| |
|----------------------------------|
| FLORAL DIVERSITY |
| FLESHY FRUITS |
| GENETICS -I |
| GENETICS II |
| GENETICS -III |
| IMMUNE -I |
| IMMUNE -II |
| IMMUNE -III |
| VOLVOX |
| OSMOSIS |
| PH SCALE |
| PHOTOSYNTHESIS |
| MICROSCOPE |
| MOSS LIFE HISTORY |
| CELL WALL |
| CELLS (PROKARYOTIC CELLS) |
| BACTERIA |
| BLOOD CELL |
| LEAF HISTORY |
| STEM HISTORY |
| LILY LIFE HISTORY |
| FERN LIFE HISTORY |
| EUGLENA |



| |
|--------------------------|
| BACTERIAL CELL |
| BLOOD TYPING |
| PARAMECIUM |
| PINE LIFE HISTORY |
| DROSOPHILA |
| PORIFERA |
| MOLLUSCA |
| ECHINODERMATA |
| ARTHROPODA |
| PLATYHELMINTHES |
| PONDS-I |
| PONDS-II |
| PONDS-III |
| NEMATODE |
| ANNELIDA |
| CHORDATA |
| CNIDARIA |
| DRY FRUIT |
| MITOSIS |
| MEIOSIS |
| PLANT CELL |
| ANIMAL CELL |
| CELL MEMBRANE |

Exclusive **Dbios** Rexine Charts Size 75x100cms.

1500 Topics See Details Inside The Catalogue