



MAKLITES

***LED ALUMINIUM ENCLOSURES
MANUFACTURERS***

**www.ledcasting.net
www.maklites.com**

Our manufacturing unit at Vasai (Mumbai)

Our die-casting unit and process



Our powder coating unit





Assembly Indoor Division



Assembly Outdoor Division



Store and Despatch Division

Company profile

- Established in 2002. An ISO 9001:2000 certified company.
- Production of different types of moulds for manufacture of aluminium PDC enclosures. Currently having >120 moulds.
- Manufacturers of different types of LED Aluminum Enclosures. One of the largest in India.
- Three production lines. Two in Mumbai & one in Chennai. Three products display showrooms at Mumbai, Delhi and Chennai.

Company profile

- Our vision is to reach out to manufacturers and users in the LED lighting industry all over India with reliable, cost effective & high quality aluminium PDC enclosures & accessories.
- As a value addition for our customers we are providing all other accessories like Drivers, LEDs, COBs, PCBs, Lens, Connectors, Reflectors etc which make us the ONE STOP STORE for procuring various LED lighting parts.
- Now also into contract manufacturing (OEM) for large organisations.
- A total solutions provider for the LED lighting Industry.

NOTICE

THE CONTENTS (INFORMATION & PHOTOGRAPHS) IN THIS PRESENTATION IS THE PROPERTY OF MAKLITES AND IT ALSO CONTAINS CONFIDENTIAL INFORMATION.

THE PRODUCT MODELS DISPLAYED ARE THE SOLE PROPERTY OF MAKLITES AND ANY REPRODUCTION IN PART OR AS A WHOLE WITHOUT THE PRIOR WRITTEN PERMISSION OF THE COMPANY IS PROHIBITED & PUNISHABLE UNDER LAW.

MAKLITES RESERVES THE RIGHT TO CHANGE OR AMEND PRODUCT SPECIFICATIONS, DESIGNS ETC WITHOUT ANY PRIOR NOTICE.

BY
HEAD OF MAKLITES

LED STREET LIGHT ECO

1) 12W SL PDC ECO-

Weight: 0.7kg.

Product code: [MAK SL 1071](#)

LED area: 130(L)x70(W)x12(H)mm

Driver area: 100mmx70mmx40mm

Pipe dia 40mm



12W SL PDC ECO

2) 20W SL PDC ECO-

Weight: 1.2kg.

Product code: [MAK SL 1001A](#)

LED area: 190(L)x95(W)x15(H)mm

Driver area: 95mmx60mmx35mm

Pipe dia 35mm



20W SL PDC ECO

3) 20watt SL PDC Prime

Weight- 1.1kg

Product code- [MAK SLE 1190](#)

LED Area –180(L)x100(W)x20(H)mm

Driver Area- 185mmx110mmx45(H)mm

Pipe dia.: 50mm



20w SL PDC Prime

4)40W SL PDC ECO-

Weight: 2.5kg.

Product code: [MAK SL 1003D](#)

LED area: 230(L)X170(W)X18mm

Driver area: 170mmX90mmX40mm

Pipe dia.:60m



40W SL PDC ECO

6) 72W SL PDC ECO-

Weight: 4.3kg.

Product code: [MAK SLE 1003F](#)

LED area: 220(L)X290(W)X18(H)mm

Driver area: 200mmX90mmX45mm

Pipe dia.:60mm



72W SL PDC ECO

7) 150W SL PDC ECO-

Weight: 7.4kg.

Product code: [MAK SLE 1070](#)

LED area: 280(L)x345(W)x20(H)mm

Driver area: 260mmx160mmx45mm

Pipe dia.:65mm



150W SL PDC ECO

LED STREET LIGHT ECO PLUS

1)20W SL PDC ECO PLUS

Weight: 1.2kg.

Product code: [MAK SLF 1001B](#)

LED area: 150mm(L)x55mm(W)x15mm(H)

Driver area: 100mmX70mmX40mm.

Pipe dia.:40mm



20W SL PDC ECO PLUS

2)24W SL PDC ECO PLUS

Weight: 1.3kg.

Product code: [MAK SLF 1182](#)

LED area: 160mm(L)x100mm(W)x15mm(H)

Driver area: 90mmx110mmx50mm

Pipe dia.:35mm



24W SL PDC ECO PLUS

4) 45W SL PDC ECO PLUS

Weight: 2.1 kg.

Product code: [MAK SLF 1138](#)

LED area: 140mm(L)x165mm(W)x15mm(H).

Driver area: 95mmX175mmX50mm.

Pipe dia.:50mm



60W SL PDC ECO PLUS

3) 60W SL PDC ECO PLUS

Weight: 2.7kg.

Product code: [MAK SLF 1004A](#)

LED area: 175mm(L)x165mm(W)x15mm(H)

Driver area: 165mmx100mmx45mm.

Pipe dia.:65mm



45W SL PDC ECO
PLUS

4)90-120w SL PDC Eco Plus

Weight: 6.39kg.

Product code: [MAK SLF 1005A](#)

LED area: 275(L)X265(W)x18(H)mm

Driver area: 290(L)X160(W)x50(H)mm

Pipe dia.: 65mm



90-120W SL PDC ECO PLUS

NEW

BRIDGE STREET LIGHT

20W BRIDGE STREET LIGHT

Product code:- MAK BSL 1233

DIMENSIONS :

PCB Area : 145(L) x 65(W)

Driver Area : 100(L)x55(W)x40(H)

Pipe Dia. :- 37mm

Price(in Rs) : for (1-49) Pcs. 315,
for(50-1000) Pcs. 299



40W BRIDGE STREET LIGHT

Product code:- MAK BSL 1234

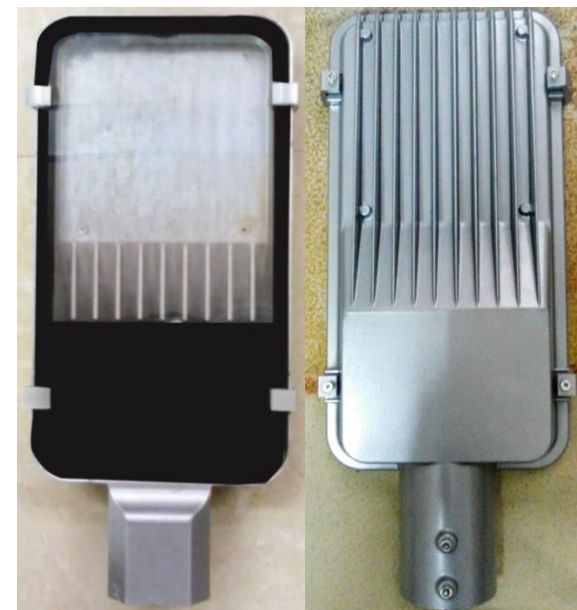
DIMENSIONS :

PCB Area : 210(L) x 140(W)

Driver Area : 102(L)x135(W)x40(H)

Pipe Dia. :- 55mm

Price(in Rs) : for (1-49) Pcs. 484,
for(50-1000) Pcs. 460



All Dimensions are in mm.

NEW

LEEF STREET LIGHT

24W LEEF STREET LIGHT

Product code:- [MAK LEEF 2222](#)

DIMENSIONS :

PCB Area :

165(L) x 80(Lower W) x 50(Upper W)

Driver Area :

100(L)x80(W)x40(H)

Pipe Dia. :- 40mm

Price(in Rs) : for (1-49) Pcs. 331,
for(50-1000) Pcs. 314



All Dimensions are in mm.

60W FL (NEW)



Product Code : [MAK FLE 2101A](#)

PCB area: 250mm(L)x180mm(W)x40mm(H)

Driver area: 145mm(L)x85mm(W)x40mm(H)

Weight: 3.0kg

30W FL (NEW)



Product Code : [MAK FLE 2101A](#)

PCB area: 190mm(L)x130mm(W)x25mm(H)

Driver area: 160mm(L)x90mm(W)x40mm(H)

Weight: 1.9kg

*90-120w FL PDC Eco Plus

Weight: 7.78kg.

Product code: [MAK FLE 1005B](#)

LED area: 275(L)X265(W)x15(H)mm

Driver area: 290(L)X160(W)x50(H)mm

Pipe dia.: 65mm



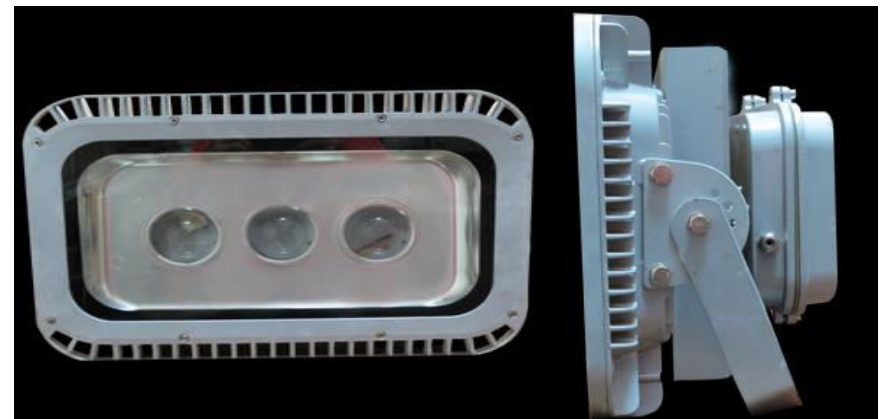
150W Flood Light ECO

Weight: 8.6kg.

Product code: [MAK FLB 1006F](#)

LED area: 350mm(L)x260mm(W).

Driver area: 190mmx100mmx50mm



FINIX Flood Light

1) 100W FINIX F/L

(With Reflector and Lens)

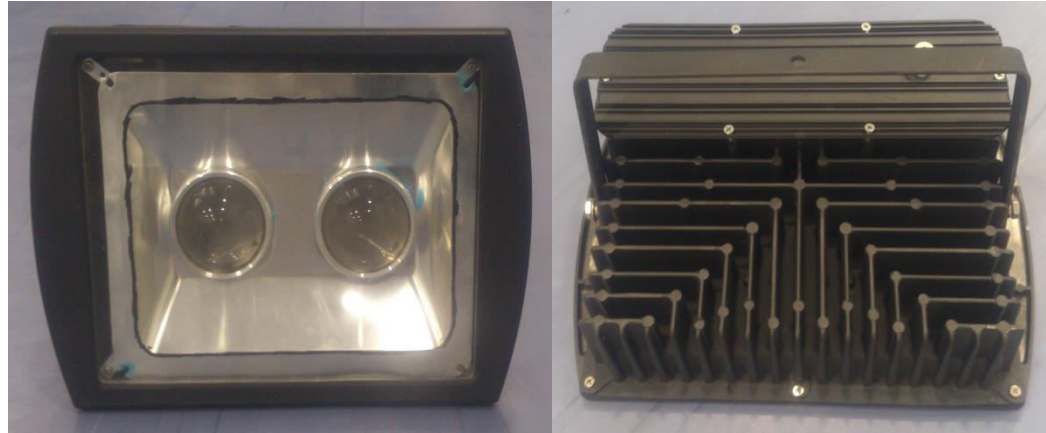
Weight : 3.7kg

Product code: [MAK FFL 1189A](#)

ONLY COB

PCB Area : 255mm X 200mm X 20mm.

Driver Area: 230mmx 65mm x47mm



2) 150watt FINIX F/L

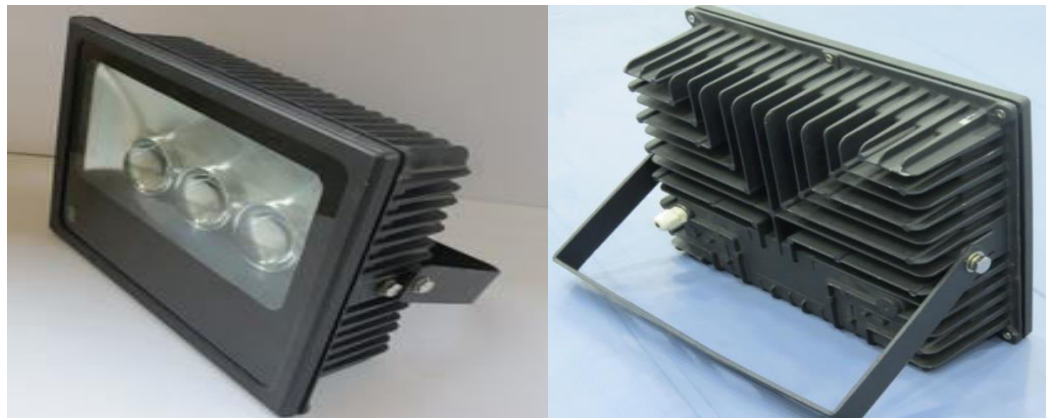
(with reflector with lens)

Product code: [MAK FFL 1157A](#)

Driver Area: 275mmx70mmx40mm

Led Area: 315mm(L)x155mm(W)

Weight : 6.05kg



NEW

LAURA COB DOWN LIGHT

1)5/10W LAURA COB Down Light ROUND

Product code : [MAK LDL 1201 R](#)

Outer Dia. : 90mm,

Cut in Dia. : 80mm, Height : 60mm

COB Area : 30mm

Angle of Dispersion – 45 Degree

Price(in Rs) : for (1-49) Pcs. 326,
for(50-1000) Pcs. 296



2)5/10W LAURA COB Down Light SQUARE

Product code : [MAK LDL 1202 S](#)

Outer Dia. : 92x92mm,

Cut in Dia. : 84mm ,Height : 65mm

COB Area : 30mm

Angle of Dispersion :- 45 Degree

Price(in Rs) : for (1-49) Pcs. 326,
for(50-1000) Pcs. 296



NEW

ELEGANT COB DOWN LIGHT

1) 10/15W ELEGANT COB DOWN LIGHT ROUND

Product code : [MAK EDL 1203 R](#)

Outer Dia. : 127x127mm,

Cut in dia. : 104mm, Height : 73mm

COB Area : 40mm

Angle of Dispersion – 45 Degree

Price(in Rs) : for (1-49) Pcs. 350,

for(50-1000) Pcs. 320

2) 10/15W ELEGANT COB DOWN LIGHT SQUARE

Product code : [MAK EDL 1204 S](#)

Outer Dia. : 130 x130mm,

Cut in dia. : 107mm, Height : 77mm

COB Area : 40mm

Angle of Dispersion – 45 Degree

Price(in Rs) : for (1-49) Pcs. 350,

for(50-1000) Pcs. 320



NEW

COOL DOWN LIGHT COB

1) 7W COOL DOWN LIGHT COB

Product code : [MAK COOL1101 A](#)

Outer dia. : 120 mm, Cut in dia.: 105mm

COB area : 45mm

Angle of Dispersion – 60 Degree

Price(in Rs) : for (1-49) Pcs. 207,
for(50-1000) Pcs. 197



2) 12W COOL DOWN LIGHT COB

Product code : [MAK COOL1102 A](#)

Outer dia. : 150 mm, Cut in dia.: 130mm

COB area : 80mm

Angle of Dispersion – 60 Degree

Price(in Rs) : for (1-49) Pcs. 293,
for(50-1000) Pcs. 279



3) 18W COOL DOWN LIGHT COB

Product code : [MAK COOL1103 A](#)

Outer dia. : 200 mm, Cut in dia.: 180 mm

COB Area : 100mm

Angle of Dispersion – 60 Degree

Price(in Rs) : for (1-49) Pcs. 398,
for(50-1000) Pcs. 379



COOL DOWN LIGHT

1) 7W COOL DOWN LIGHT

Product code: [MAK COOL1101](#)

Outer dia.: 120 mm, Cut in dia.: 105mm

PCB area: 45mm



2) 12W COOL DOWN LIGHT

Product code: [MAK COOL1102](#)

Outer dia.: 150 mm, Cut in dia.: 130mm

PCB area: 80mm



3) 18W COOL DOWN LIGHT

Product code: [MAK COOL1103](#)

Outer dia.: 200 mm, Cut in dia.: 180 mm

PCB area: 100mm



4) 24W COOL DOWN LIGHT

Product code: [MAK COOL1104](#)

Outer dia.: 225mm, Cut in dia.: 200 mm

PCB area: 120mm



DOWN LIGHT ECO

1)5W DL ECO

Product code: [MAK DLE 1026](#)

Outer dia.: 90mm Cut in dia.: 75mm.

LED area:40mm

2)9W DL ECO

Product code: [MAK DLE 1027](#)

Outer dia.:130mm, Cut in dia.: 110mm

LED area: 65mm

3)12W DL ECO

Product code: [MAK DLE 1012](#)

Outer dia.: 160mm, Cut in dia.: 140mm

LED area:90mm

4) 18W DL ECO

Product code: [MAK DLE 1012A](#)

Outer dia.: 190mm, Cut in dia.: 160mm

LED area:115mm



DOWN LIGHT ECO PLUS

1) 5W DL ECO PLUS

Product code: [MAK DLP 1080](#)

Outer dia.: 90mm, Cut in dia.: 75mm.

LED area: 40mm

2) 9W DL ECO PLUS

Product code: [MAK DLP 1081](#)

Outer dia.: 130mm, Cut in dia.: 110mm.

LED area: 65mm

3) 12W DL ECO PLUS

Product code: [MAK DLP 1082](#)

Outer dia.: 160mm, Cut in dia.: 140mm.

LED area: 90mm

4) 18W DL ECO PLUS

Product code: [MAK DLP 1083](#)

Outer dia.: 190mm

Cut in dia.: 160mm.

LED area: 115mm

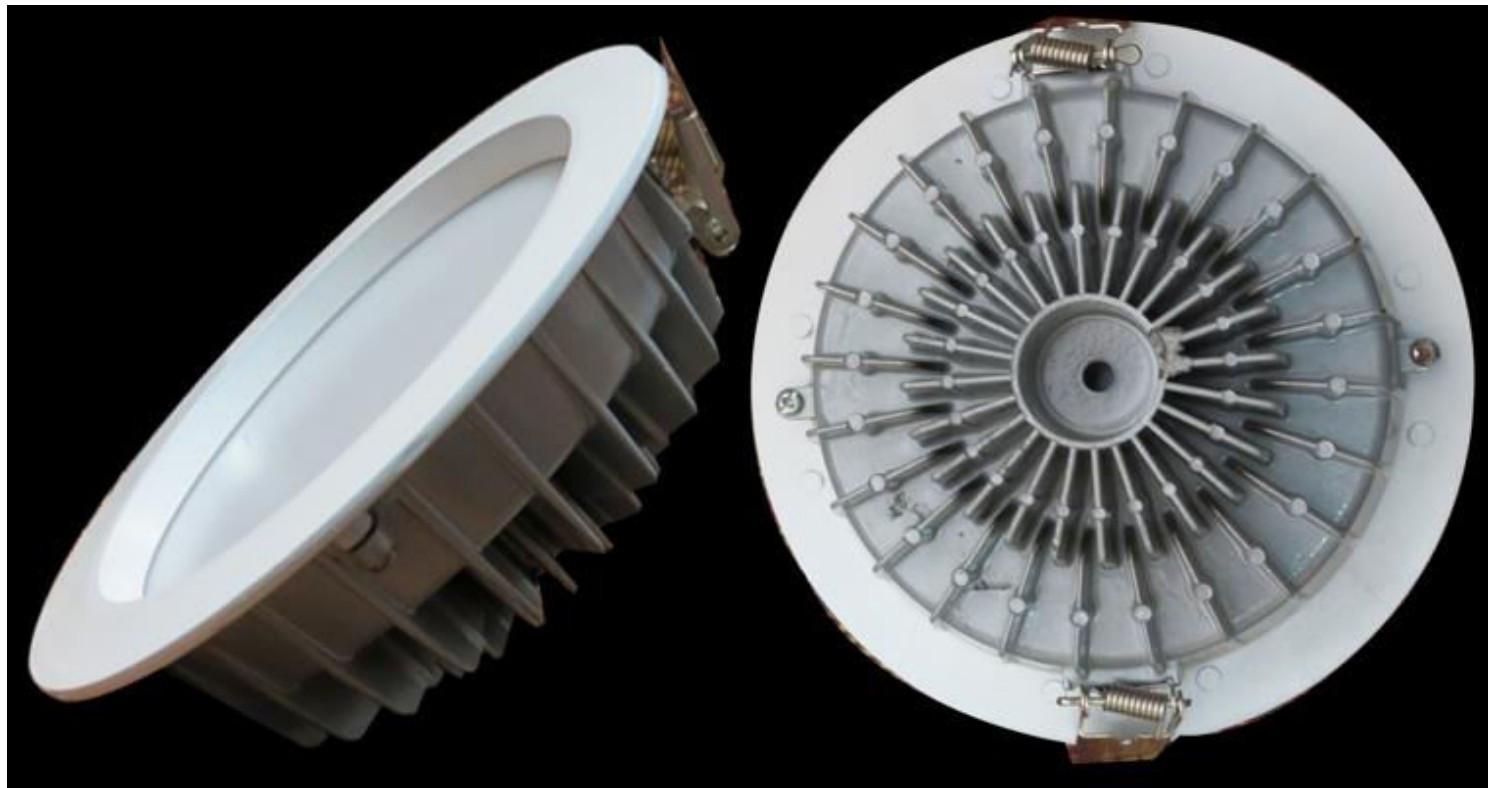


Note- In Eco Plus Model there will be an additional reflector as shown in the picture

18W DL SUN-FLOWER

Product code: **MAK DLS 1027B** , Outer dia.: 185mm

Inner dia.: 150mm, LED area: 125mm



WAVES DOWN LIGHT

1)7W DL WAVE

Product code: [MAK WAV 3110](#)

Outer dia.: 100mm, Cut in dia.: 75mm

PCB area: 45mm

2)12W DL WAVE

Product code: [MAK WAV 3111](#)

Outer dia.: 140mm, Cut in dia.: 110mm

PCB area: 75mm

3)18W DL WAVE

Product code: [MAK WAV 3112](#)

Outer dia.: 180mm, Cut in dia.: 145mm

PCB area: 100mm

4)24W DL WAVE

Product code: [MAK WAV 3114](#)

Outer dia.: 240mm, Cut in dia.: 196mm

PCB area: 140mm



ES SQUARE DOWN LIGHT

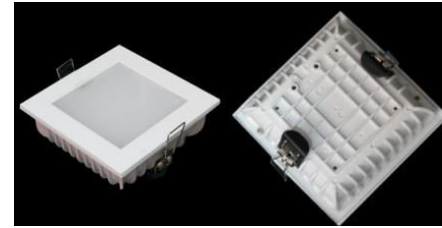
1) 5W ES-SQUARE DL

Product code: [MAK ESS 1105A](#)

Outer dim.: 90mm x 90mm,

Cut in dim.: 75mm x 75mm

PCB area: 60mm x 60mm



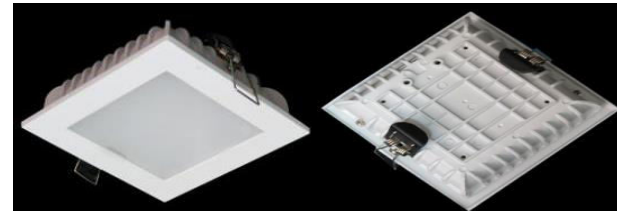
2) 9W ES-SQUARE DL

Product code: [MAK ESS 1105](#)

Outer dim.: 140mm x 140mm

Cut in dim.: 110mm x 110mm

PCB area: 83mm x 83mm



3) 15W ES-SQUARE DL

Product code: [MAK ESS 1106](#)

outer dim.: 160mm x 160mm

Cut in dim.: 145mm x 145mm

PCB area: 97mm x 97mm



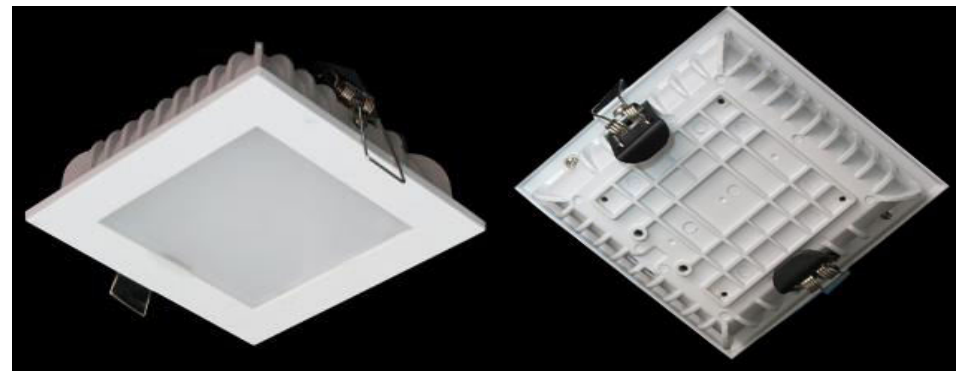
4) 21W ES-SQUARE DL

Product code: [MAK ESS 1107](#)

Outer dim.: 195mm x 195mm

Cut in dim.: 165mm x 165mm

PCB area: 120mm x 120mm



SQUARE PANEL LIGHT

1)9W SQUARE PANEL LIGHT

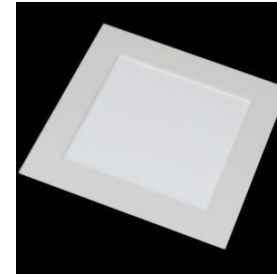
Product code: [MAK PNS 1086](#)

Outer dim.: 120mm x 120mm

Cut in dim.:105mm x 105mm

Length: 115mm

Breadth: 115mm



2)15W SQUARE PANEL LIGHT

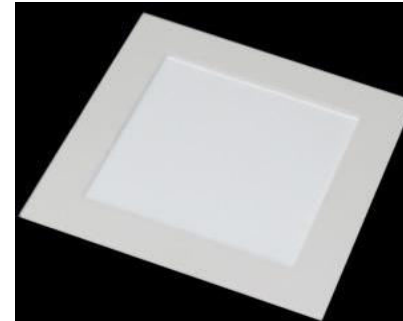
Product code:[MAK PNS 1087](#)

Outer dim.: 185mm x 185mm

Cut in dim.:164 mm x 164mm

Length: 180mm

Breadth: 180mm



3)22W SQUARE PANEL LIGHT

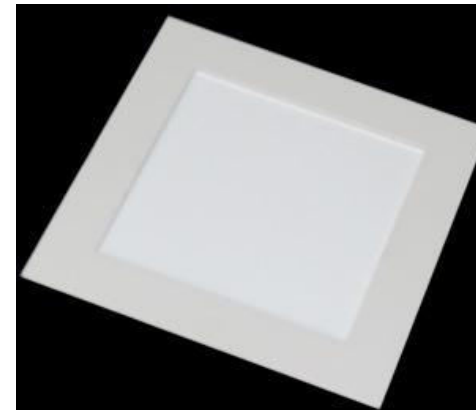
Product code: [MAK PNS 1042](#)

outer dim.: 220mm x 220mm

Cut in dim.: 195mm x 195mm

Length: 220mm

Breadth: 220mm



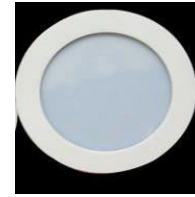
ROUND PANEL LIGHT

1)6W ROUND PANEL LIGHT

Product code: [MAK PNR 1084](#)

Outer dia.: 116mm

Cut in dia.: 104mm



2)9W ROUND PANEL LIGHT

Product code: [MAK PNR 1085](#)

Outer dia.: 142mm

Cut in dia.: 130mm



3)12W ROUND PANEL LIGHT

Product code: [MAK PNR 1039](#)

Outer dia.: 180mm

Cut in dia.: 164mm



4)18W ROUND PANEL LIGHT

Product code: [MAK PNR 1040](#)

Outer dia.: 240mm

Cut in dia.: 225 mm



SLEEK BACKLIT PANEL(NEW)

1)9W Sleek BACKLIT PANEL ROUND

Product code : [MAK BPL 1210R](#)

Outer dia.: 106mm

Cut in dia.:96 mm

Pcb Area: mm



2)18W Sleek BACKLIT PANEL ROUND

Product code : [MAK BPL 1211R](#)

Outer dim.: 178mm

Cut in dim.:163mm

Pcb Area: 110mm



1)9W Sleek BACKLIT PANEL SQUARE

Product code: [MAK BPL 1212S](#)

Outer dia.: 110mm X 110mm

Cut in dia.: 100mm X 100mm

Pcb dia: 60mm X 60mm



SLEEK BACKLIT PANEL(NEW)

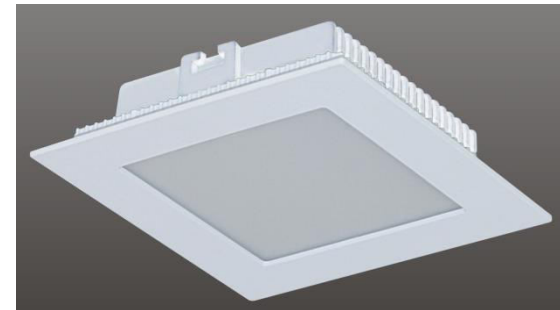
2)12W Sleek BACKLIT PANEL SQUARE

Product code: [MAK BPL 1213S](#)

Outer dim.: 150mm X 150mm

Cut in dim.: 136mm X 136mm

Pcb Area: 98mm X 98mm



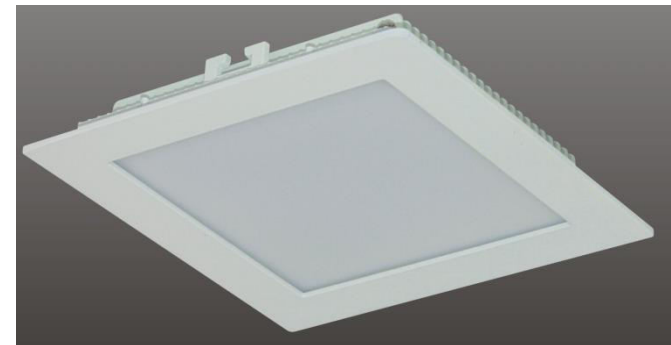
3)18W Sleek BACKLIT PANEL SQUARE

Product code: [MAK BPL 1214S](#)

Outer dia.: 180mm X 180mm

Cut in dia.: 164mm X 164mm

Pcb dia: 118mm X 118mm



2X2 PANEL (NEW)

48W PANEL LIGHT 2X2

Product code: MAK PPL 1025

Outer dim.: 590mm X 590mm

Cut in dim.: 575mm X 575mm

Height : 50 mm

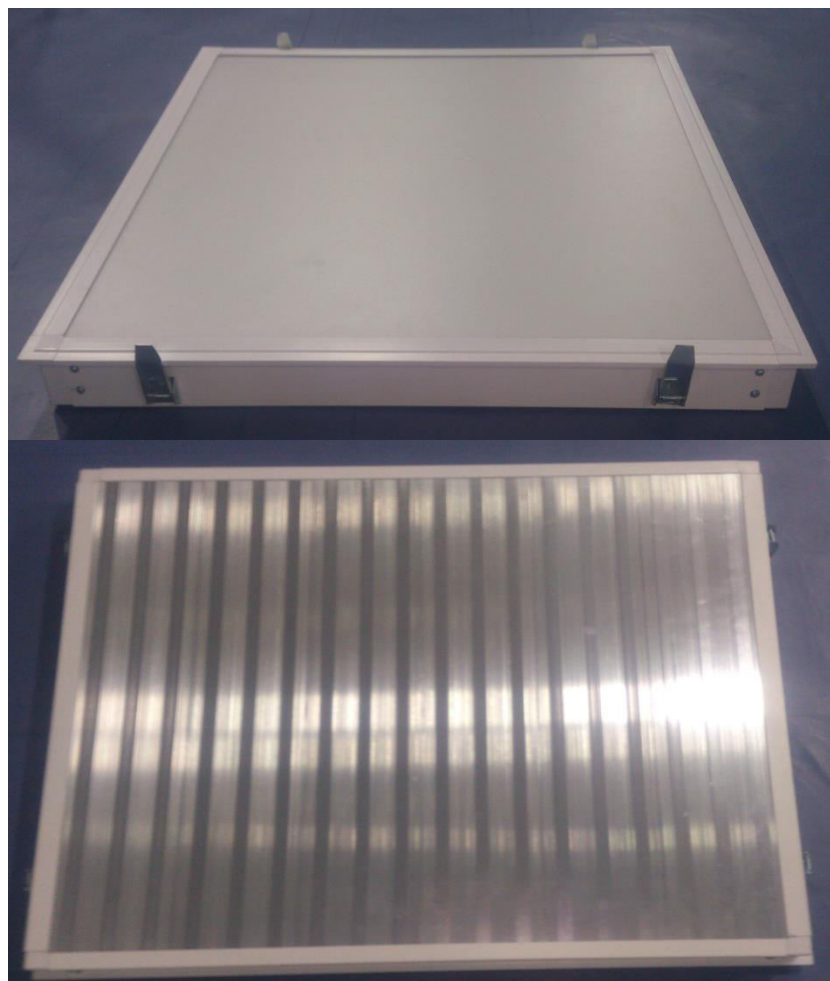
PCB Area:

Length - 550 mm

Width – 8 mm

No. of PCBs : 18 PCBs

Weight : 2.23Kg



LED BULB(Indian Casting)

1)5w LED BULB NEW

Product Code: [MAK BLB 1192](#)

PCB DIA : 40mm

Driver Area :30mm X 25mm Weight : 60gm

PCB Configuration : 5 S 2 p



2)7w LED BULB NEW

Product Code: [MAK BLB 1193](#)

PCB DIA: 50mm

Driver Area: 40mm X 25mm Weight : 95gm.

PCB Configuration : 7s 2 p



T5 TUBE LIGHT

T5 TUBE LIGHT 4FT

Product code Clear : MAK TL 1011L

Milky : MAK TL 1011K

PCB area : 1140mm(L) X 9.5mm(W)



T5 Clear



T5 Milky

T5 MAX ECO TUBE LIGHT HOUSING

Product code:

Milky: MAK MAX 1059N

PCB area: 1150mm(L) X 10mm(W)



MAX T5 Milky Eco

MAX TUBE LIGHT

T8 TUBE LIGHT HOUSING

Product code Clear : MAK TL 1011P
Milky: MAK TL 1011C
PCB Area : 1160 mm(L) X 19.5mm(W)
Driver Area : 1160(L)X 20(W)x15(H)mm



T8 Clear

T8 Milky

T8 MAX TUBE LIGHT HOUSING

Product Code Prismatic : MAK MAX 1056
Milky : MAK MAX 1057
PCB Area : 1170 mm(L) X 19.5mm(W)
Driver Area : 1173(L)X 20(W)x15(H)mm



T8 MAX Clear

T8 MAX Milky

TUBE LIGHT ECO

T8 TUBE ECO LIGHT HOUSING

Product code :

Prismatic : MAK TL 1011PN

Milky: MAK TL 1011CN

PCB Area : 1160 mm(L) X 9.5mm(W)

Driver Area : 1160(L)X 20(W)x15(H)mm



T8 Prismatic Eco & T8 Milky Eco

T8 MAX ECO TUBE LIGHT HOUSING

Product Code:

Prismatic : MAK MAX 1056N

Milky : MAK MAX 1057N

PCB Area : 1170 mm(L) X 19.5mm(W)

Driver Area : 1173(L)X 20(W)x15(H)mm



MAX T8 Prismatic Eco & MAX T8 Milky Eco

WALL WASHER

MAK WW 1011B 4FT

Driver area :1200x330x15mm

Pcb area:1200 x32 mm



MAK WW 1011H 2FT

Driver area :550x30x15mm

Pcb area:550 x 32mm



POST TOP /GL 30W ENCL



PCB area : 200mm x 200mm

Driver height : 100mm

Product code: MAK LD 1033A

NEW

FRESH LAMP(Low Bay)

20w Fresh Lamp(Low Bay)

Product code:- MAK FRSH 1214

Heat sink Dimensions

Dia. : 90mm,

Height: 47mm

Driver Area : 47mm(H),35mm(Dia.)

Angle of Dispersion:- 80 Degree

Price(in Rs) : for (1-49) Pcs. 350,
for(50-1000) Pcs. 274



NEW

HIGH BAY (Fins Model)



1) 50W FINS HIGH BAY (60Degree Reflector)

Product code:- MAK FHBY 1216

Heat sink Dimensions:

Dia. :- 120mm, **Height:-** 60mm

Driver Area : 120mm(H),50mm(Dia.)

Angle of Dispersion :- 60 Degree

Price(in Rs) : for (1-49) Pcs. 1350,
for(50-1000) Pcs. 1150

2) 50W FINS HIGH BAY (120Degree Reflector)

Product code:- MAK FHBY 1216A

Heat sink Dimensions:

Dia. : -120mm, **Height:** 60mm

Driver Area : 120mm(H), 50mm(Dia.)

Angle of Dispersion :- 120 Degree

Price(in Rs) : for (1-49) Pcs. 1350,
for(50-1000) Pcs. 1150



NEW

HIGH BAY (Fins Model)

3) 100W FINS HIGH BAY (80Degree Reflector)

Product code:- MAK FHB Y 1217

Heat sink Dimensions:

Dia. :- 140mm, **Height:-** 80mm

Driver Area : 230(L)x145(W)x50(H)mm

Angle of Dispersion :- 80 Degree

Price(in Rs) : for (1-49) Pcs. 1750,
for(50-1000) Pcs. 1500



HIGHBAY COB



Dia 160mm
Length 80mm



Dia 160mm
Length 170mm



Dome for both=80degree



HIGH BAY COB 50W

Product code:MAK HBY 1020(W/O Lens)
MAK HBY 1020A(with Lens)

Driver area: 230mmx145mmx50mm

HIGH BAY COB 100W

Product code:MAK HBY 1021(W/O Lens)
MAK HBY 1021(With Lens)

Driver area:230mmx145mmx50mm

1)70W HIGHBAY

Product code: [MAK HBY 1091](#)

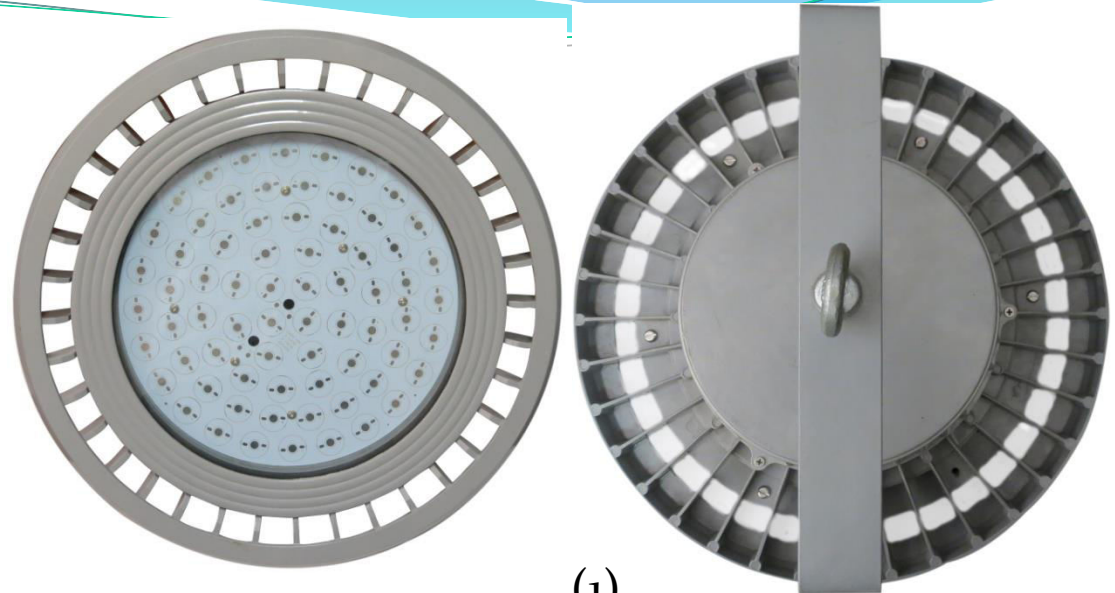
Outer dia.: 376mm

PCB area: 230mm

Height from glass :15mm

Driver area: 195mm Dia

45mm Height



(1)

2)150W HIGHBAY

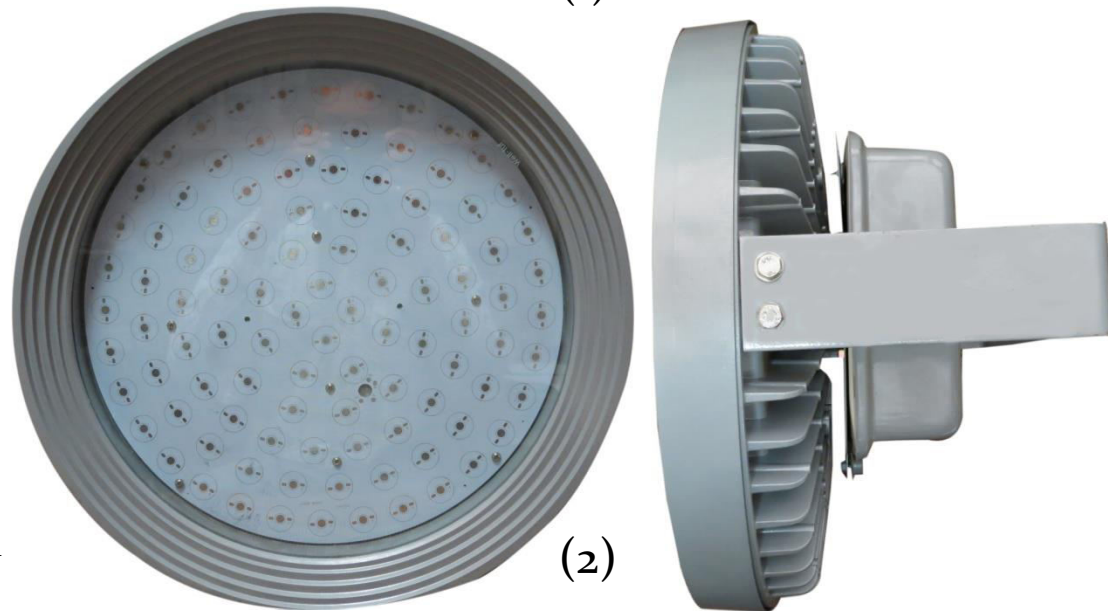
Product code: [MAK HBY 1092](#)

Outer dia.: 425mm

PCB area: 340mm

Height from glass :15mm

Driver area:240mmx170mmx45mm



(2)

3) 70watt High Bay

(With Reflector)

Product code: **MAK HBY 1091A**

Outer dia.: 376mm

PCB area: 230mm

Height from glass : 15mm

Driver area: 195mm DIA

45mm Height



2) 150watt High Bay

(With Reflector)

Product code: **MAK HBY 1092A**

Outer dia.: 425mm

PCB area: 340mm

Height from glass : 15mm

Driver area:

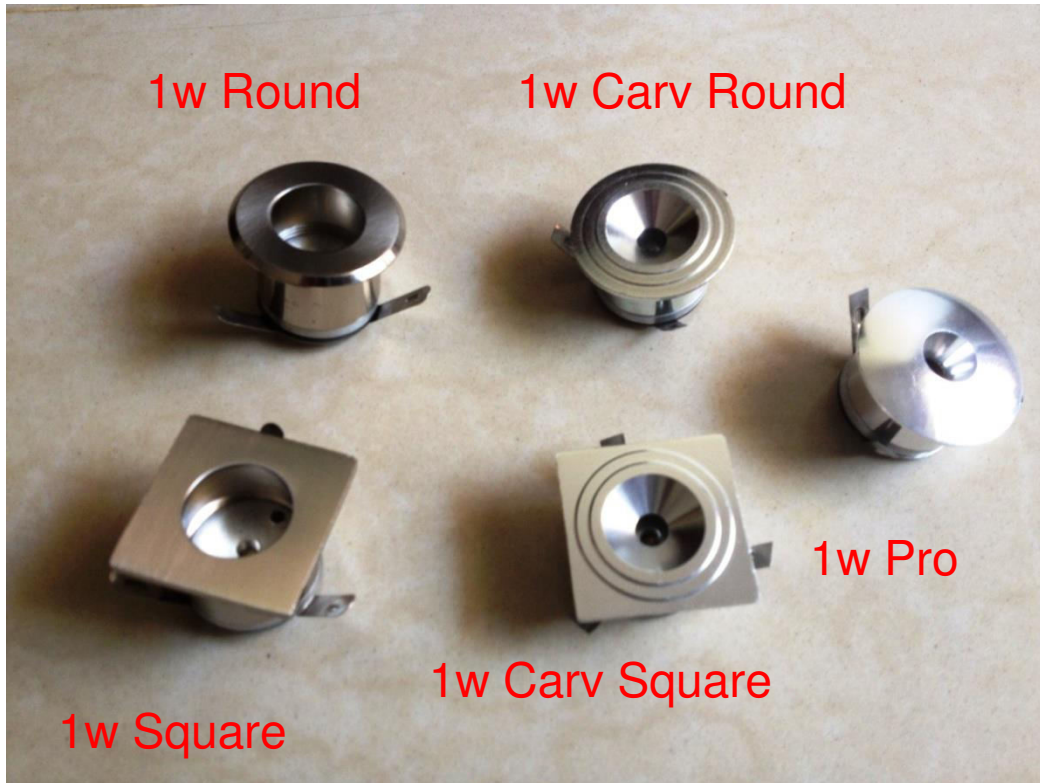
240mmx170mmx45mm



**Body Colour for both
High Bay will be Gray.**

DOWN LIGHT (MINI RANGE)

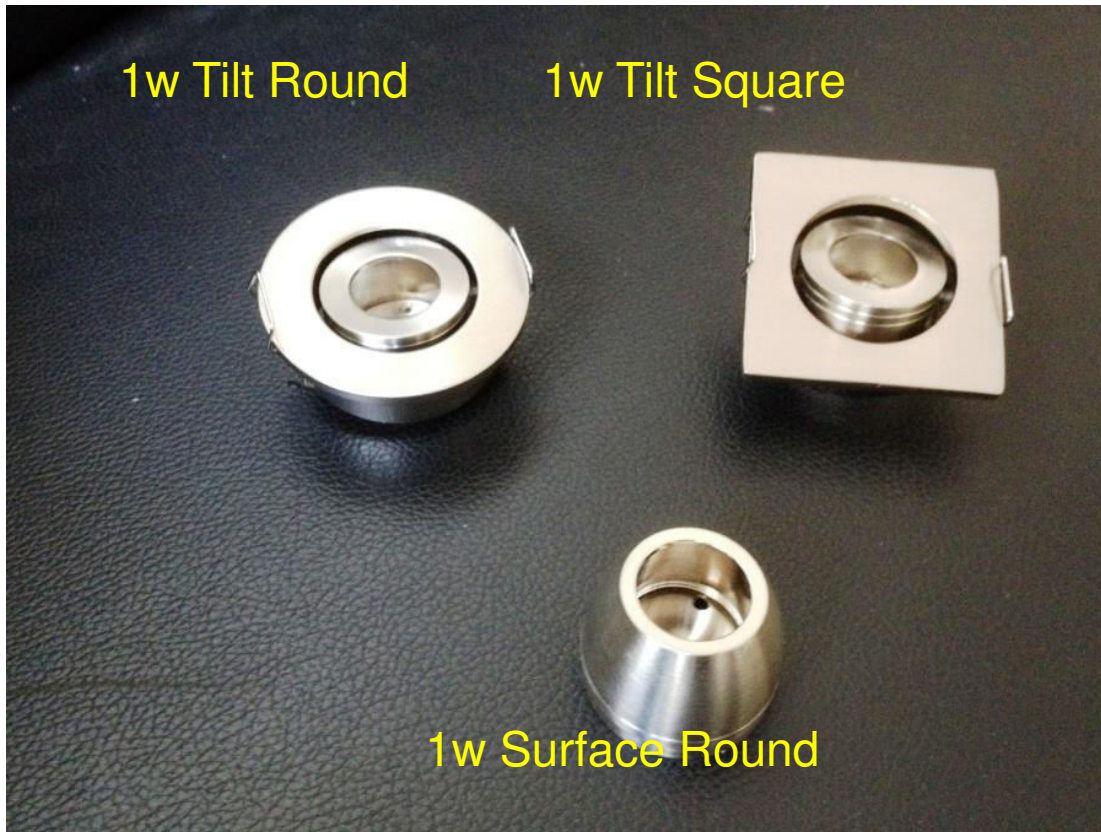
part 1



- | | |
|------------------|--------------|
| 1)1w Round | MAK DLM 1072 |
| 2)1w Square | MAK DLM 1073 |
| 3)1w Carv Round | MAK DLM 1074 |
| 4)1w Carv Square | MAK DLM 1075 |
| 5)1w Pro | MAK DLM 1076 |

DOWN LIGHT (MINI RANGE)

Part 2



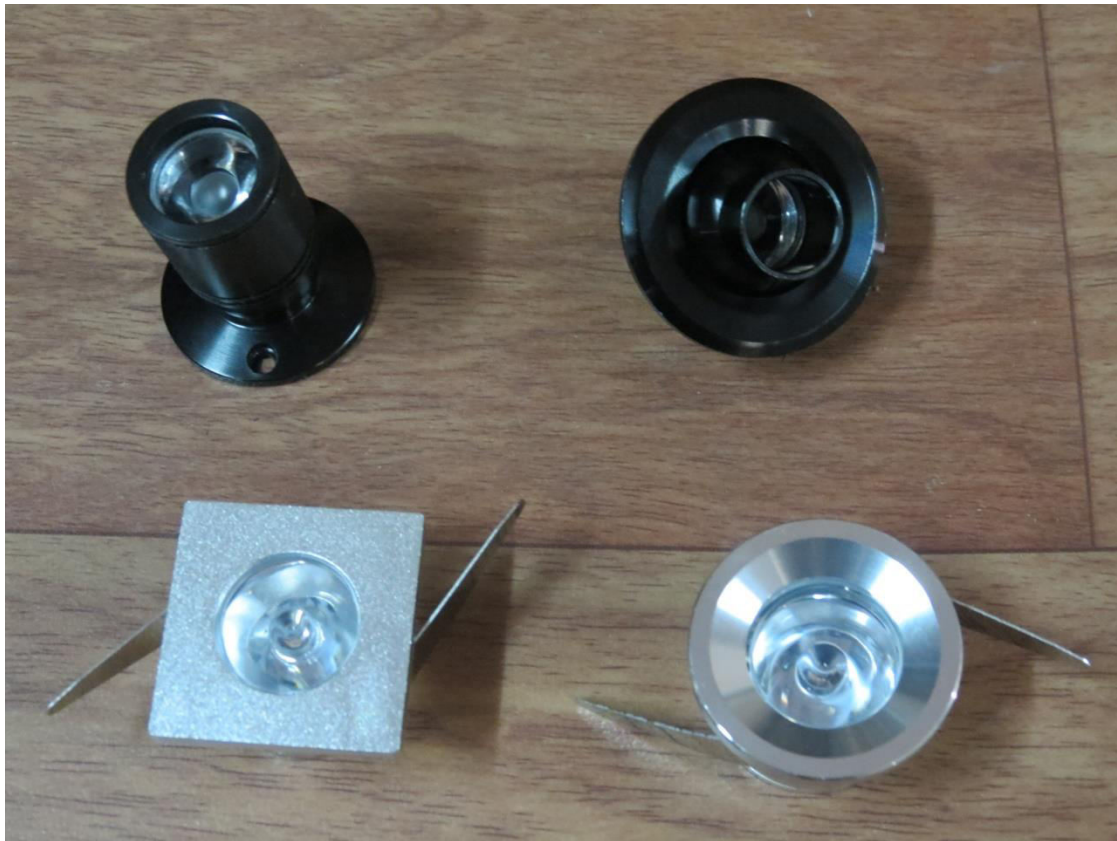
1w Tilt Round MAK DLM 1077

1w Tilt Square MAK DLM 1078

1w Surface Round MAK DLM 1079

DOWN LIGHT (MINI RANGE)

Part 3



1w Tilt Round Black Model - I
MAK DLM 1085

1w Tilt Round Black Model - II
MAK DLM 1086

1w DL Square (Alu Finish)
MAK DLM 1084

1w DL Round (Alu Finish)
MAK DLM 1083

KAFUTER PASTE



CONTACT US

MUMBAI Unit:

Gala No 115/116, Nirav Industrial Estate Bldg no 4, Sativali, Vasai East, Mumbai-401208. PH: 0250 - 6458886, 3298008, 6056623 & 6056624.

Vasai Unit II: Gala No 11, Arunoday Ind Estate, Sativali Road, Vasai East, Mumbai -401208. Ph.- 0250- 6458886/6056624/6056623

Mobile: +919637643401, +919322768636

Delhi unit:

No. 54, Guru Angad Nagar Extention, Laxmi Nagar, (Near Nirman Vihar Metro), New Delhi-110 092, India . Mob : +919999083485

Chennai Unit :

No.78, 4th Street, TVS Nagar, Padi, Chennai - 600 050, India
Mob : +919322768636

Our websites : www.ledcasting.net & www.maklites.com