

MAKLITES

***LED ALUMINUM ENCLOSURES
MANUFACTURER***

Web:-

**www.ledcasting.net
www.maklites.com**

Email:-

**maklites@yahoo.co.in
maklites.technical@gmail.com**

Our manufacturing units at Vasai (Mumbai)





Assembly Division

Store and Despatch Division

COMPANY PROFILE

- Established in 2002. An ISO 9001:2000 certified company.
- **MAKLITES** has a fully integrated Manufacturing facility in Vasai, Mumbai (Maharashtra) capable of manufacturing all types of Aluminium Pressure die casting Enclosures(Fixtures) and Metal clad Printed Circuit Boards (MCPCB) required for LED lighting.
- Manufacturers of different types of LED Aluminum Enclosures(Street Lights, Flood Lights, High Bay, Down lights ,Tube Lights etc. One of the largest in India.
- Currently having > 150 Moulds(Dies).
- We have 9 Units functioning within 2-3 km. Radius in Vasai(Mumbai) only.
- We are Equipped with the latest & Advanced Machines, Tools & Gadgets required for the Production of LED lighting Fixtures.
- Our Distributors are in Major Locations in India

Our Vision & Mission

- Our vision is to reach out to manufacturers and users in the LED lighting industry all over India with reliable, cost effective & high quality Aluminum PDC enclosures & accessories.
- As a value addition for our customers we are providing all housings with all Accessories like Diffusers, Glass, Alu. Toggles, PCBs, Lens, Connectors, Reflectors etc. which make us the ONE STOP STORE for procuring various LED lighting parts.
- Record-breaking Speed to become largest **LED Lighting Enclosures Manufacturer** company.
- A total solutions provider for the LED lighting Industry.

Notice

- The contents (Information & Photographs) in this presentation is the property of MAKLITES and it also contains confidential information.
- The product models displayed are the sole property of **MAKLITES** and any reproduction in part or as a whole without the prior written permission of the company is prohibited & punishable under law.
- **MAKLITES** reserves the right to change or amend product specifications, designs etc. without any prior notice.

BY
HEAD OF MAKLITES

Our Team

Purchasing Team

**Manufacturing & Production
Division**

QC Team

Management Team

Technical Team

Sales Team

LED STREET LIGHT ECO



15-20W SL PDC ECO

Product code: MAK SLE 1071

LED area: 135(L)x71(W)x12(H)mm

Driver area: 60mm x 100mm x 40mm

Pipe dia.: 40mm

Weight: 0.7kg.



24-30W SL PDC ECO

Product code: MAK SLE 1001A

LED area: 190(L)x95(W)x15(H)mm

Driver area: 95mmx80mmx35mm

Pipe dia : 35mm

Weight: 1.2kg.



24-30W SL PDC Prime

Product code- **MAK SLE 1190**

LED Area –180(L)x100(W)x20(H)

Driver Area – 110 x 85 x 45(H) mm

Pipe dia.: 50mm

Weight- 1.1kg



48-60W SL PDC ECO

Product code: **MAK SLE 1003D (AL)**

LED area: 230(L)x170(W)x18mm

Driver area:170mmx90mmx40mm

Pipe dia.:60m

Weight: 2.5kg.



80-100W SL PDC ECO

Product code: **MAK SLE 1003F**

PCB Dim. : 220(L)X290(W)X18(H)mm

Driver Size: 200 mm X 90 mm X 45 mm

Pipe dia.: 60mm

Weight: 4.3 kg.

LED STREET LIGHT ECO PLUS



30W SL PDC ECO PLUS

Product code: **MAK SLF 1137**

LED area: 134mm(L) x 71mm(W) x 15mm(H)

Driver area: 95 mm x 65mm x 40 mm

Pipe dia.: 45 mm

Weight: 950 gm.



24-30W SL PDC ECO PLUS

Product code: **MAK SLF 1182**

LED area: 160mm(L)x100mm(W)x15mm(H)

Driver area: 90mmx110mmx50mm

Pipe dia.:35mm

Weight: 1.3kg.



45-60W SL PDC ECO PLUS

Product code: **MAK SLF 1138**

LED area: 140mm(L)x165mm(W).

Driver area: 95mmX175mmX50mm.

Pipe dia.:50mm

Weight: 2.1 kg.



72-80W SL PDC ECO PLUS

Product code: **MAK SLF 1004A**

LED area: 175mm(L)x165mm(W)

Driver area: 165mmx100mmx45mm.

Pipe dia.:65mm

Weight: 2.7kg.



120-150W SL PDC ECO PLUS

Product code: MAK SLF 1005A

LED area: 275(L) X 265(W)

Driver area: 290(L)X160(W)x50(H)mm

Pipe dia.: 65mm

Weight: 6.5kg.

BRIDGE STREET LIGHT



24-30W BRIDGE STREET LIGHT

Product code:- **MAK BSL 1233**

DIMENSIONS :

PCB Area : 145(L) x 65(W)mm

Driver Area : 100(L)x55(W)x40(H)mm

Pipe Dia. :- 37mm

Weight : - 0.860Kg



40-50W BRIDGE STREET LIGHT

Product code:- **MAK BSL 1234**

DIMENSIONS :

PCB Area : 210(L) x 140(W)

Driver Area : 102(L)x135(W)x40(H)

Pipe Dia. :- 55mm

Weight : - 1.60Kg

BRIDGE ACRYLIC STREET LIGHT



24-30W BRIDGE ACRYLIC STREET LIGHT

Product code:- MAK BSL 1233A

DIMENSIONS :

PCB Area : 145(L) x 65(W)mm

Driver Area : 100(L) x 55(W) x 40(H) mm

Pipe Dia. :- 37mm

Weight : - 0.860Kg



40-50W BRIDGE ACRYLIC STREET LIGHT

Product code:- MAK BSL 1234A

DIMENSIONS :

PCB Area : 210(L) x 140(W)

Driver Area : 102(L)x135(W)x40(H)

Pipe Dia. :- 55mm

Weight : - 1.60Kg

NEW

LEEF STREET LIGHT



15W LEEF STREET LIGHT

Product code:- MAK LEEF 2223

DIMENSIONS :

PCB Area : 55 mm Dia.

Driver Area :

40(L)x40(W)x25(H)

Pipe Dia. :- 45mm

Weight : - 0.350Kg



24-28W LEEF STREET LIGHT

Product code:- MAK LEEF 2222

DIMENSIONS :

PCB Area : 165(L) x 80(Lower W) x50(Upper W)

Driver Area :

100(L)x80(W)x40(H)

Pipe Dia. :- 40mm

Weight : - 0.640Kg

FLOOD LIGHT ECO

30-45W FL(NEW)

Product Code : **MAK FLE 2101A**

PCB area: 190(L) x 130(W) x 25(H)mm

Driver area: 160 (L) x 90 (W) x 40 (H)mm

Weight:1.9kg

Both (COB & MULTI LED Reflector)

Available for Both



60-80W FL(NEW)

Product Code : **MAK FLN 2101**

PCB area:250(L) x 180(W) x 40(H)mm

Driver area: 160 (L) x 90 (W) x 40 (H)mm

Weight: 3.0kg

NEW



100-120W FINIX F/L

Product code: **MAK FFL 1189**

With MULTI-REFLECTOR

PCB Area : 260mm X 195mm

Driver Size : 230mmx 65mm x47mm

Weight : 3.7kg

100-120W FINIX F/L

(With Reflector and Lens)

Product code: **MAK FFL 1189A**

Driver Size : 230mmx 65mm x47mm

Weight : 3.7kg



NEW

150-180W FINIX F/L NEW

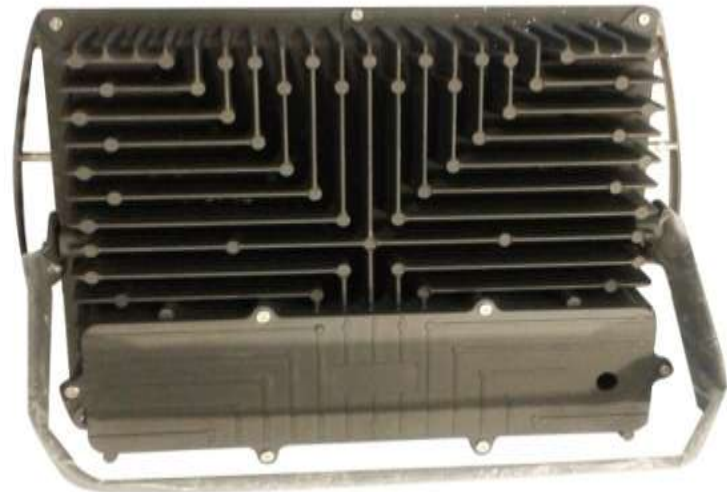
Product code: **MAK FFL 1157N**

Driver Size: 314 mm x 68 mm x 60 mm

Led Area: 332mm(L) x 248 mm(W)

Weight : 6.8 kg

COB & MULTI-REFLECTOR



NEW



250-300W FLOOD LIGHT

(With Reflector & Lens)

Product code:- MAK FLB 1006G

PCB Area(In mm):- 525(L) x 190(W) x45 (H)

Driver Area(In mm):- 330(L)x170(W)x60(H)

Total Weight :- 10.52 Kg

Housing weight : - 8.54 Kg

Angle of Dispersion : 60 Degree



NEW

REGAL FLOOD LIGHT

30W REGAL FL

Product Code : MAK RFL 2203

PCB area: 90(L) x 135(W) x 27(H)mm

Driver area: 130(L) x 57(W) x 40(H)mm

Weight: 1.1 kg

MULTI LED Reflector

For both 30 & 60W



50-60W REGAL FL

Product Code : MAK RFL 2204

PCB area: 110(L) x 158(W) x 35(H)mm

Driver area: 155(L) x 75(W) x 50(H)mm

Weight: 1.55 kg

NEW

PATH LIGHTS

3W 1-Way Path Light

Product Code : MAK PATH 1114

PCB area(Dia.): 20 mm

Light o/p Dia. : 22 mm, Glass Dia. : 34 mm

Frame Outer Dia. : 50 mm , Depth : 50 mm



3W 2-Way Path Light

Product Code : MAK PATH 1115

PCB area(Dia.): 20 mm

Light o/p Dia. : 22 mm, Glass Dia.: 34 mm

Frame Outer Dia. : 50 mm , Depth : 50 mm



3W 3-Way Path Light

Product Code : MAK PATH 1116

PCB area(Dia.): 20 mm

Light o/p Dia. : 22 mm, Glass Dia. : 34 mm

Frame Outer Dia. : 50 mm , Depth : 50 mm



3W 4-Way Path Light

Product Code : MAK PATH 1117

PCB area(Dia.): 20 mm

Light o/p Dia. : 22 mm, Glass Dia. : 34 mm

Frame Outer Dia. : 50 mm , Depth : 50 mm



NEW

PATH LIGHTS



6W 1-Way Path Light

(Without Heat-sink)

Product Code : **MAK PATH 1112**

PCB area(Dia.): 50 mm

Light o/p Dia. : 60 mm, Glass Dia. : 70 mm

Frame Outer Dia. : 90 mm , Depth : 65 mm

12W 1-Way Path Light

(With Heat-sink)

Product Code : **MAK PATH 1112H**

PCB Are(on Heat sink)(Dia.): 50 mm

Light o/p Dia. : 60 mm, Glass Dia. : 70 mm

Frame Outer Dia. : 90 mm , Depth : 65 mm



NEW



6W 2-Way Path Light

(Without Heat-sink)

Product Code : MAK PATH 1113

PCB area(Dia.): 50 mm

Light o/p Dia. : 60 mm, Glass Dia. : 70 mm

Frame Outer Dia. : 90 mm , Depth : 65 mm

12W 2-Way Path Light

(With Heat-sink)

Product Code : MAK PATH 1113H

PCB area(Dia.): 50 mm

Light o/p Dia. : 60 mm, Glass Dia. : 70 mm

Frame Outer Dia. : 90 mm , Depth : 65 mm



NEW

GARDEN LIGHTS



7w Garden Light

Product Code : MAK GAR 1093N

PCB area(Dia.): 49 mm

Light o/p Dia. : 50 mm, Outer Dia. : 72 mm

Driver Area : 30mm (Dia.) , Height : 45 mm

12w Garden Light

Product Code : MAK GAR 1028N

PCB area(Dia.): 63 mm

Light o/p Dia. : 62 mm, Outer Dia. : 95 mm

Driver Area : 47 mm (Dia.) , Height : 35 mm





18w Garden Light

Product Code : **MAK GAR 1029N**

PCB area(Dia.): 87 mm

Light o/p Dia. : 85 mm, Outer Dia. : 127 mm

Driver Area : 75 mm (Dia.) , Height : 38mm

24W GARDEN LIGHT

Product Code : **MAK GAR 1094N**

PCB area(Dia.): 115 mm

Light o/p Dia. : 110 mm, Outer Dia. : 160 mm

Driver Area : 98 mm (Dia.) , Height : 38 mm



NEW

TRACK LIGHTS

20w Track Light

(with Lens and Without Lens)

**Product Code : MAK TRCK 1118 (without Lens)
MAK TRCK 1118A (with Lens)**

PCB area(Dia.): 36 mm

Light o/p Dia. : 44 mm, Outer Dia. : 66 mm

Driver Area : 130 x 40 x 35 mm

Weight : 0.546 Kg

Angle : 30 Degree



30w Track Light

(with Lens and Without Lens)

Product Code :

**MAK TRCK 1119 (without Lens)
MAK TRCK 1119A (with Lens)**

PCB area(Dia.): 42 mm

Light o/p Dia. : 62 mm, Outer Dia. : 84 mm

Driver Area : 130 x 40 x 35 mm

Weight : 0.868 Kg

Angle : 30 Degree

NEW

UP-DOWN LIGHT



18w Up-Down Light (Without Heat sink)

Product Code : MAK UPDL 1122

Light o/p PCB area(Dia.): 85 mm

Dia. : 80 mm,

Outer Dia. : 88 mm

Weight : 0.910 Kg

24w Up-Down Light (With Heat sink)

Product Code : MAK UPDL 1123

PCB area(Dia.): 85 mm

Light o/p Dia. : 80 mm,

Outer Dia. : 88 mm

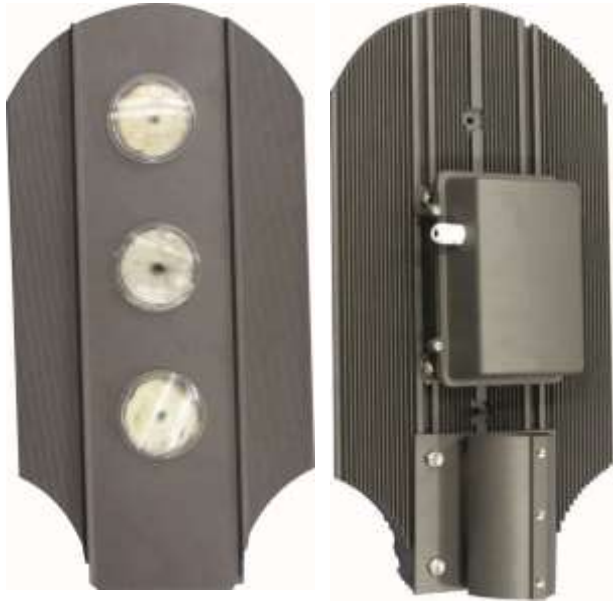
Heat Sink Area : Dia. : 60 mm, Length : 40 mm

Weight : 1.026 kg



VISTA STREET LIGHT(Extrusion)

NEW



100w Vista Street Light

Product code: **MAK VSL 1223**

Area: 499 mm(L) x 257mm(W)

Driver area: 160mm x 98mm x 40mm.

LED Area : 60 mm

Pipe dia.:60mm

Weight: 3.29kg.

130w Vista Street Light

Product code: **MAK VSL 1224**

Area: 608 mm(L) x 257mm(W)

Driver area: 160mm x 98mm x 40mm.

LED Area : 60 mm

Pipe dia.:60mm

Weight: 3.87kg.



NEW

170w Vista Street Light

Product code: MAK VSL 1225

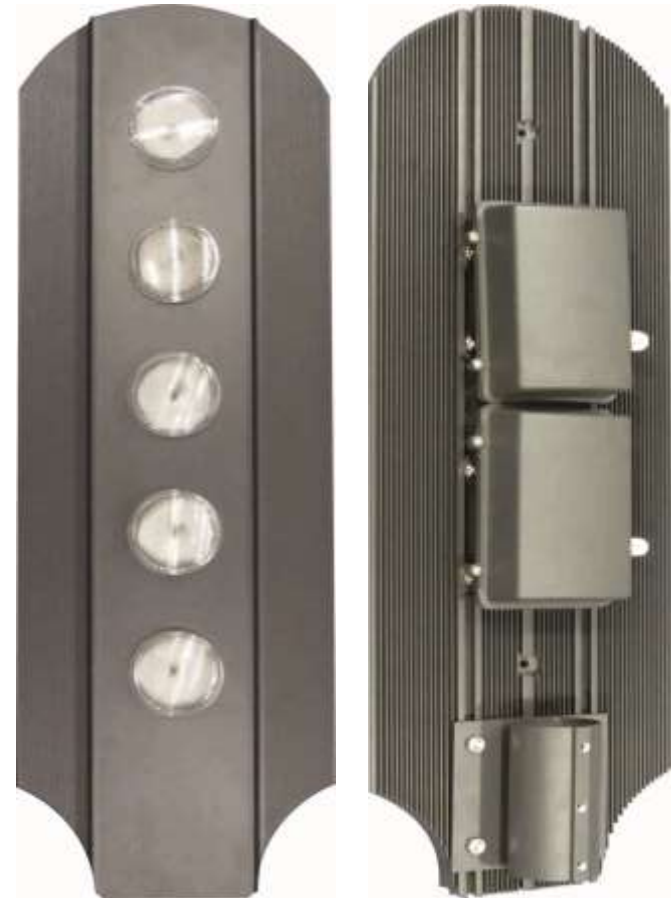
Area: 798 mm(L) x 257mm(W)

Driver area: (160mm x 98mm x 40mm.) x2

LED Area : 60 mm

Pipe dia.:60mm

Weight: 5.37kg.



NEW

PIONEER FLOOD LIGHT(Extrusion)



100w Pioneer Flood Light

Product code: **MAK PFL 1228**

Area: 499 mm(L) x 257mm(W)

Driver area: 160mm x 98mm x 40mm.

LED Area : 60 mm

Pipe dia.:60mm

Weight: 3.9kg.

130w Pioneer Flood Light

Product code: **MAK PFL 1229**

Area: 608 mm(L) x 257mm(W)

Driver area: 160mm x 98mm x 40mm.

LED Area : 60 mm

Pipe dia.:60mm

Weight: 4.2kg.



NEW

PIONEER FLOOD LIGHT(Extrusion)

170w Pioneer Flood Light

Product code: MAK PFL 1230

Area: 798 mm(L) x 257mm(W)

Driver area: (160mm x 98mm x 40mm.) x2

LED Area : 60 mm

Pipe dia.:60mm

Weight: 5.37kg.



NEW

UNDER WATER LIGHTS

3W UW LIGHT (R/S)

Product code:

MAK UW 1013 (R/S)

Outer Dim.: 50 X 50 mm,

Light o/p (dia.) : 24 mm.

Full Depth : 70 mm

PCB Area: 20 mm

7W UW LIGHT (R/S)

Product code:

MAK UW 1014 (R/S)

Outer Dim.: 85 x 85 mm ,

Light o/p (dia.) : 63 mm.

Full Depth : 65 mm

PCB Area: 45 mm

12W UW LIGHT (R/S)

Product code:

MAK UW 1015 (R/S)

Outer Dim.: 114 x 114 mm,

Light o/p (dia.) : 86mm.

Full Depth : 80 mm

PCB Area: 68 mm



NEW

INGROUND LIGHTS

3W ING LIGHT (R/S)

Product code: **MAK ING 1058 (R/S)**

Outer Dim.: 80 x 80 mm,

Light o/p (dia.) : 50 mm.

Full Depth : 75 mm

PCB Area: 50 mm



6W ING LIGHT (R/S)

Product code:

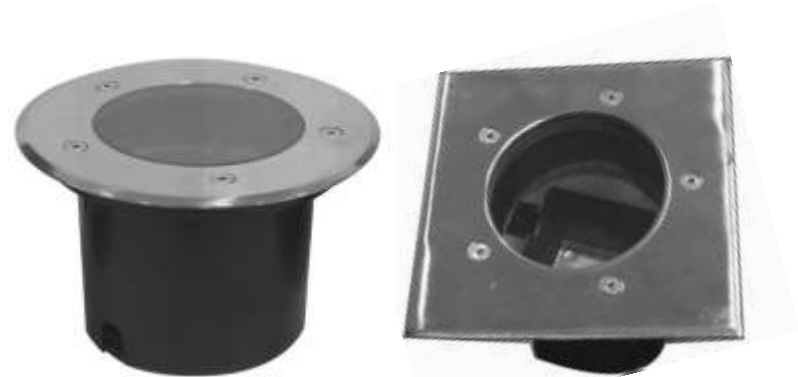
MAK ING 1060, MAK ING 1059

Outer Dim.: 150 x 150 mm,

Light o/p (dia.) : 85 mm.

Full Depth : 75 mm

PCB Area: 87 mm



12W ING LIGHT (R)

Product code: **MAK ING 1061**

Outer Dim.: 180 x 180 mm,

Light o/p (dia.) : 115 mm.

Full Depth : 78 mm

PCB Area: 112 mm



BOLLARD LIGHT

NEW



10W Mark-I Bollard Light(2Ft)

Product code:- MAK BLRD 001

Overall Dimensions (In mm):-

Length : 550 mm , Dia. : 70 mm

PCB Area(On Heat sink) :

Dia. : 49 mm

Driver Area(In mm):-

Length : 400 mm ,Dia. : 42 mm

Viewing Angle :- 360 Degree

NEW



10W Mark-II Bollard Light(2 Ft)

Product code:- MAK BLRD 002

Overall Dimensions (In mm):-

Length : 550 mm , Dia. : 70 mm

PCB Area(On Heat sink) :

Dia. : 49 mm

Driver Area(In mm):-

Length : 400 mm ,Dia. : 42 mm

Viewing Angle :- 360 Degree

NEW



10W Triangle Bollard Light (2 Ft)

Product code:- MAK BLRD 003

Overall Dimensions (In mm):-

Length : 510 mm , Dia. : 70 mm

PCB Area(Triangle Shape) :

Side A = B = C = 60 mm

Driver Area(In mm):-

Length : 430 mm ,Dia. : 50mm

Viewing Angle :- 360 Degree

NEW



10W Root Bollard Light(2Ft)

Product code:- MAK BLRD 004

Overall Dimensions (In mm):-

Length : 600 mm , Dia. :130mm

PCB Area : Star PCB 4 no.

Viewing Angle :- 360 Degree

NEW



10W Cobra Bollard Light(2.5 Ft)

Product code:- MAK BLRD 005

Overall Dimensions (In mm):-

Length : 700 mm

PCB Area : Dia. = 42 mm,

Driver Size (In mm):-

500(L) x 40(W) x 30(H)

Viewing Angle :- 170 Degree

LAURA COB DOWN LIGHTS



5-10W LAURA COB DOWN LIGHT ROUND

Product code : MAK LDL 1201 R

Outer Dia. : 90mm,

Cut in Dia. : 80mm, Height : 60mm

COB Area : 30mm

Angle of Dispersion – 45 Degree



5-10W LAURA COB DOWN LIGHT SQUARE

Product code : MAK LDL 1202 S

Outer Dia. : 92x92mm,

Cut in Dia. : 84mm ,Height : 65mm

COB Area : 30mm

Angle of Dispersion :- 45 Degree

ELEGANT COB DOWN LIGHTS



10-15W ELEGANT COB DOWN LIGHT ROUND

Product code : MAK EDL 1203 R

Outer Dia. : 127x127mm,

Cut in dia. : 104mm, Height : 73mm

COB Area : 40mm

Angle of Dispersion – 45 Degree



10-15W ELEGANT COB DOWN LIGHT SQUARE

Product code : MAK EDL 1204 S

Outer Dia. : 130 x130mm,

Cut in dia. : 107mm, Height : 77mm

COB Area : 40mm

Angle of Dispersion – 45 Degree

FOCUS COB DOWN LIGHTS



10W FOCUS COB DOWN LIGHT ROUND

Product code : **MAK FDL 1221**

Outer Dia. : 90mm,

Cut in Dia. : 80 mm, Height : 60mm

COB Area : 25mm

Angle of Dispersion – 45 Degree



20W FOCUS COB DOWN LIGHT ROUND

Product code : **MAK FDL 1220**

Outer Dia. : 110mm,

Cut in Dia. : 95mm, Height : 75mm

COB Area : 25mm

Angle of Dispersion – 45 Degree

COOL COB DOWN LIGHTS



10W COOL DOWN LIGHT COB

Product code : **MAK COOL1101 A**

Outer dia. : 120 mm, Cut in dia.: 105mm

COB area : 45mm

Angle of Dispersion – 60 Degree



15W COOL DOWN LIGHT COB

Product code : **MAK COOL1102 A**

Outer dia. : 150 mm, Cut in dia.:130mm

COB area : 80mm

Angle of Dispersion – 60 Degree



24W COOL DOWN LIGHT COB

Product code : **MAK COOL1103 A**

Outer dia. : 200 mm, Cut in dia.: 180 mm

COB Area : 100mm

Angle of Dispersion – 60 Degree

COOL DOWN LIGHTS



10W COOL DOWN LIGHT

Product code: **MAK COOL1101**

Outer dia.: 120 mm, Cut in dia.: 105mm

PCB area: 45mm



15W COOL DOWN LIGHT

Product code : **MAK COOL1102**

Outer dia.: 150 mm, Cut in dia.: 130mm

PCB area: 80mm



24W COOL DOWN LIGHT

Product code : **MAK COOL1103**

Outer dia.: 200 mm, Cut in dia.: 180 mm

PCB area: 100mm

ECO DOWN LIGHTS

7W DL ECO

Product code: **MAK DLE 1026**

Outer dia.: 90mm Cut in dia.: 75mm.

LED area:40mm

10W DL ECO

Product code: **MAK DLE 1027**

Outer dia.:130mm, Cut in dia.: 110mm

LED area: 65mm

15W DL ECO

Product code: **MAK DLE 1012**

Outer dia.: 160mm, Cut in dia.: 140mm

LED area:90mm

24W DL ECO

Product code : **MAK DLE 1012A**

Outer dia.: 190mm, Cut in dia.: 160mm

LED area:115mm



ECO PLUS DOWN LIGHTS

7W DL ECO PLUS

Product code: **MAK DLE 1080**

Outer dia.: 90mm Cut in dia.: 75mm.

LED area: 40mm

10W DL ECO PLUS

Product code: **MAK DLE 1081**

Outer dia.:130mm, Cut in dia.: 110mm

LED area: 65mm

15W DL ECO PLUS

Product code: **MAK DLE 1082**

Outer dia.: 160mm, Cut in dia.: 140mm

LED area:90mm

24W DL ECO PLUS

Product code: **MAK DLE 1083**

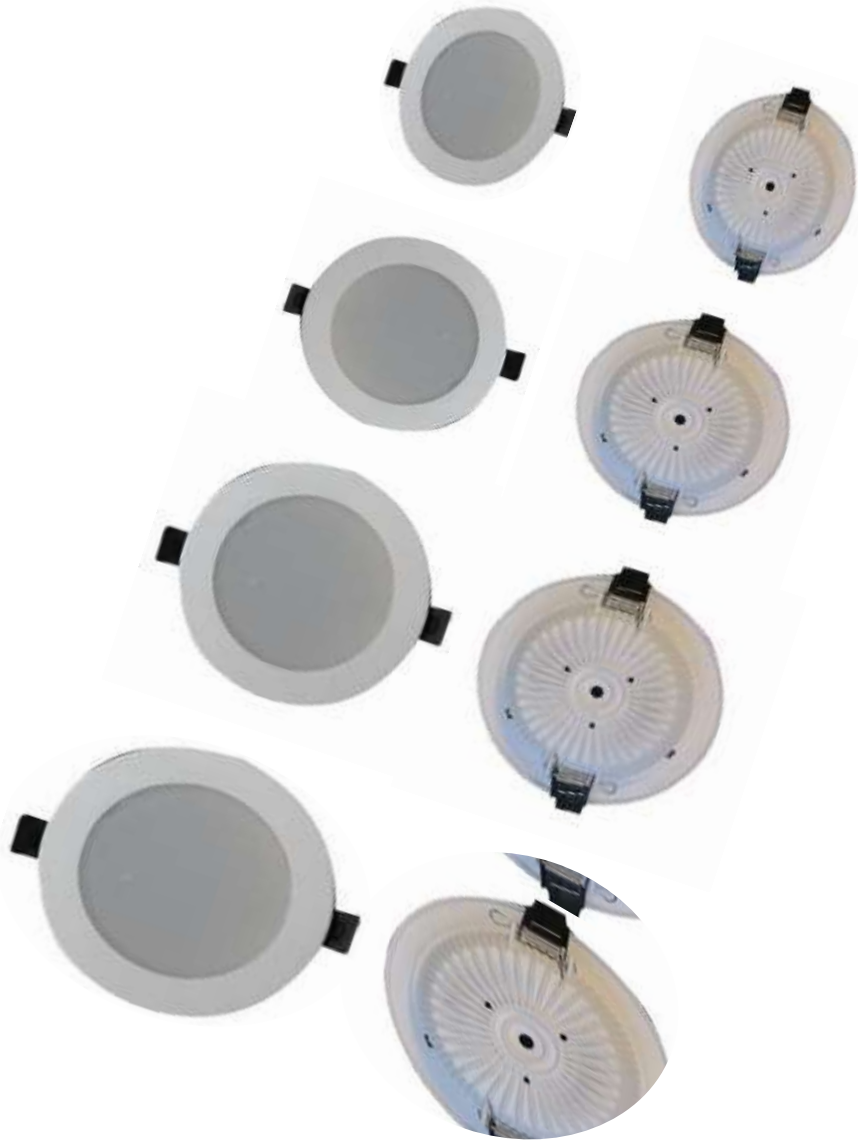
Outer dia.: 190mm, Cut in dia.: 160mm

LED area:115mm



Note- In Eco Plus Model there will be an additional reflector as shown in the picture

WAVES DOWN LIGHTS



7W DL WAVES

Product code: MAK WAV 3110

Outer dia.: 100mm, Cut in dia.: 75mm

PCB area: 45mm

12W DL WAVES

Product code: MAK WAV 3111

Outer dia.: 140mm, Cut in dia.: 110mm

PCB area: 75mm

18W DL WAVES

Product code: MAK WAV 3112

Outer dia.: 180mm, Cut in dia.: 145mm

PCB area:100mm

24W DL WAVES

Product code: MAK WAV 3114

Outer dia.: 240mm, Cut in dia.: 196mm

PCB area:140mm

ES-SQUARE DOWN LIGHTS



10W ES-SQUARE DL

Product code: **MAK ESS 1105**

Outer dim.: 140mm x 140mm

Cut in dim.: 110mm x 110mm

PCB area: 83mm x 83mm



18W ES-SQUARE DL

Product code: **MAK ESS 1106**

outer dim.: 160mm x 160mm

Cut in dim.: 145mm x 145mm

PCB area: 97mm x 97mm



24W ES-SQUARE DL

Product code: **MAK ESS 1107**

Outer dim.: 195mm x 195mm

Cut in dim.: 165mm x 165mm

PCB area: 120mm x 120mm

SUN-FLOWER DOWN LIGHT



18-24W DL SUN-FLOWER

Product code: MAK DLS 1027B ,

Outer dia.: 185mm

Inner dia.: 150mm,

LED area: 125mm

ROUND PANEL LIGHTS

6W ROUND PANEL LIGHT

Product code: **MAK PNR 1084**

Outer dia.: 116mm

Cut in dia.: 104mm

9W ROUND PANEL LIGHT

Product code: **MAK PNR 1085**

Outer dia.: 142mm

Cut in dia.: 130mm

12W ROUND PANEL LIGHT

Product code: **MAK PNR 1039**

Outer dia.: 180mm

Cut in dia.: 164mm

18W ROUND PANEL LIGHT

Product code: **MAK PNR 1040**

Outer dia.: 240mm

Cut in dia.: 225 mm



SLEEK BACKLIT PANEL(ROUND)



9W SLEEK BACKLIT PANEL ROUND

Product code : **MAK BPL 1210R**

Outer dia.: 106mm

Cut in dia.:96 mm

PCB Area: 60 mm



18W SLEEK BACKLIT PANEL ROUND

Product code : **MAK BPL 1211R**

Outer dim.: 178mm

Cut in dim.:163mm

PCB Area: 110mm

SLEEK BACKLIT PANEL(SQ.)



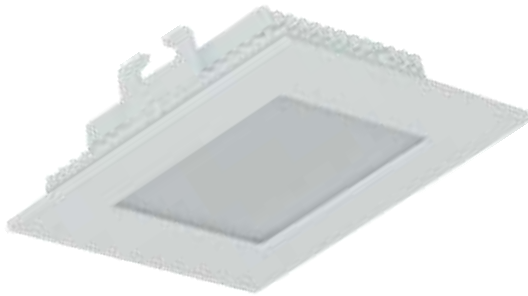
9W SLEEK BACKLIT PANEL SQUARE

Product code: MAK BPL 1212S

Outer dia.: 110mm X 110mm

Cut in dia.: 100mm X 100mm

PCB Area: 60mm X 60mm



12W SLEEK BACKLIT PANEL SQUARE

Product code: MAK BPL 1213S

Outer dim.: 150mm X 150mm

Cut in dim.: 136mm X 136mm

PCB Area: 98mm X 98mm



18W SLEEK BACKLIT PANEL SQUARE

Product code: MAK BPL 1214S

Outer dia.: 180mm X 180mm

Cut in dia.: 164mm X 164mm

PCB Area : 118mm X 118mm

PLATINA PANEL LIGHT

NEW

2x2 PLATINA PANEL LIGHT(NEW)



48W PANEL LIGHT 2X2

Product code: **MAK PPL 1025**

Outer dim.:590mm X 590mm

Cut in dim.: 575mm X 575mm

Height : 50 mm

PCB Area: 550 (L) mm x 8(W) mm

Weight : 2.23Kg

2x1 PLATINA PANEL LIGHT (NEW)



36W PANEL LIGHT 2X1

Product code: **MAK PPL 1026**

Outer dim.: 595mm X 295mm

Cut in dim.: 580mm X 285mm

Height : 50 mm

One PCB Area: 540(L) mm X 8(W) mm

Weight : 1.27 Kg

1x1 PLATINA PANEL LIGHT (NEW)



36W PANEL LIGHT 1X1

Product code: **MAK PPL 1027**

Outer dim.: 295mm X 295mm

Cut in dim.: 285mm X 285mm

Height : 50 mm

One PCB Area: 240(L) mm X 8(W) mm

Weight : 0.775 Kg

SLIM PANEL LIGHT

NEW



24W SLIM PANEL LIGHT 1x2

Product code: **MAK SPL 1241**

Outer dim.: 300 mm X 600mm

Light Output Area: 250 mm X 550 mm

Height: 9 mm

PCB Area: 560 (L) mm x 5(W) mm

20W SLIM PANEL LIGHT 1x1

Product code: **MAK SPL 1242**

Outer dim.: 300 mm X 300mm

Light Output Area: 250 mm X 250 mm

Height: 9 mm

PCB Area: 280 (L) mm x 5(W) mm



SLIM PANEL LIGHT

NEW



40 W SLIM PANEL LIGHT 1x4

Product code: MAK SPL 1243

Outer dim.: 300 mm X 1200 mm

Light Output Area .: 250 mm X 1150 mm

Height : 9 mm

PCB Area: Length - 1170 mm,

Width – 5 mm

SLIM PANEL LIGHT

NEW

40W SLIM PANEL LIGHT 2X2

Product code: **MAK SPL 1240**

Outer dim.: 600mm X 600mm

Light Output Area .: 552mm X 552 mm

Depth : 9 mm

LGP Dim. : Length : 565 mm ,
Width : 3 mm

PCB Area: Length - 565 mm,
Width – 5 mm

Total Weight : 2.55 Kg



LED BULB(INDIAN CASTING)



5W LED BULB NEW

Product Code: MAK BLB 1192

PCB DIA : 40mm

Driver Area :30mm X 25mm

Weight : 60gm

PCB Configuration : 5S 2p



7W LED BULB NEW

Product Code: MAK BLB 1193

PCB DIA: 50mm

Driver Area: 40mm X 25mm

Weight : 95gm.

PCB Configuration : 7s 2p

TUBE LIGHT(Retrofit)

T8 TUBE LIGHT HOUSING

Product code **Clear : MAK TL 1011P**
Milky: MAK TL 1011C

PCB Area : 1177 mm(L) X 18.5mm(W)

Driver Area : 1177(L)X 20(W)x15(H)mm



T8 TUBE ECO LIGHT HOUSING

Product code :

Prismatic : MAK TL 1011PN

Milky: MAK TL 1011CN

PCB Area : 1177 mm(L) X 9.5mm(W) Driver

Area : 1177(L)X 20(W)x15(H)mm



MAX TUBE LIGHT(Wall mounted)

T8 MAX TUBE LIGHT HOUSING

Product Code **Prismatic** : **MAK MAX 1056**
 Milky : **MAK MAX 1057**

PCB Area : 1177mm(L) X 18.5mm(W)

Driver Area : 1177(L)X 20(W)x15(H)mm



T8 MAX ECO TUBE LIGHT HOUSING

Product Code:

Prismatic : **MAK MAX 1056N**

Milky : **MAK MAX 1057N**

PCB Area : 1177 mm(L) X 9.5mm(W)

Driver Area : 1177 (L)X 20(W)x15(H)mm



T5 TUBE LIGHT

T5 TUBE LIGHT 4FT

Product code : Milky : MAK TL 1011K
Clear : MAK TL 1011L

PCB area: 1150mm(L) X 10mm(W)
Driver Area : 1150(L)X 15(W)x15(H)mm



T5 MAX ECO TUBE LIGHT HOUSING

Product code: Milky: MAK MAX 1059N

PCB area : 1177mm(L) X 9.5mm(W)
Driver Area : 1177(L)X 15(W)x15(H)mm



WALL WASHER



4 Ft WALL WASHER

Product code- **MAK WW 1011B**

Driver area :1200 x 330 x 15 mm

Pcb area: 1200 x32 mm



2 Ft WALL WASHER

Product code- **MAK WW 1011H**

Driver area : 550 x 30 x 15 mm

Pcb area: 550 x 32 mm



POST TOP/GL 70W ENCL



Product code: MAK PTP 1033A

PCB area : 300 mm x 300 mm

Total Height : 345 mm

Outer Dia. : 410 mm

FRESH LAMP(Low Bay)



20w Fresh Lamp(Low Bay)

Product code:- **MAK FRSH 1214**

PCB area : 85mm

Heat sink Dimensions

Dia. : 90mm,

Height: 47mm

Driver Area : 47mm(H), 35mm(Dia.)

Angle of Dispersion:- 80 Degree

FINS HIGH BAY



50-60W FINS HIGH BAY (60Degree Reflector)

Product code:- MAK FHBY 1216

PCB area : 105mm

Heat sink Dimensions:

Dia. :- 120mm, Height:- 60mm

Driver Area : 120mm(H),50mm(Dia.)

Angle of Dispersion :- 60 Degree



50-60W FINS HIGH BAY (120 Degree Reflector)

Product code:- MAK FHBY 1216A

PCB area : 105mm

Heat sink Dimensions:

Dia. : -120mm, Height: 60mm

Driver Area : 120mm(H), 50mm(Dia.)

Angle of Dispersion :- 120 Degree

FINS HIGH BAY



100-120W FINS HIGH BAY

Product code:- MAK FHBY 1217

Heat sink Dimensions:

Dia. :- 150mm, Height:- 80mm

PCB Area(Dia.) :- 150mm

Driver Area :

Height :- 150 mm, Dia.: - 85mm

Angle of Dispersion :- 80 Degree

COB HIGH BAY



50-60W HIGH BAY COB

Product code: **MAK HBY 1020**

(W/O Lens)

MAK HBY 1020A(with Lens)

Driver area: 230mm x 145mm x 50mm

Dia. 160mm, Length 80 mm

Dome for both = 80degree



HIGH BAY COB 100-120W

Product code: **MAK HBY 1021**

(W/O Lens)

MAK HBY 1021(With Lens)

Driver area: 230mm x 145mm x 50mm

Dia. 160mm, Length 170 mm

MULTI-LED HIGH BAY



70-90W HIGHBAY(Multi LED)

Product code: MAK HBY 1091A

Outer dia.: 376mm

PCB area: 230mm

Height from glass :15mm

Driver area: 195mm Dia.

Height : 45mm

Weight : 3.5Kg



150-180W HIGHBAY(Multi LED)

Product code: MAK HBY 1092A

Outer dia.: 425mm

PCB area: 340mm

Height from glass :15mm

Driver area:240mmx170mmx45mm

Weight : 7.9Kg

MULTI-LED HIGH BAY



70-90W HIGHBAY(Multi LED)

Product code: MAK HBY 1091

Outer dia.: 376mm

PCB area: 230mm

Height from glass :15mm

Driver area: 195mm Dia. 45mm
Height

Weight : 3.5Kg



150-180W HIGHBAY(Multi LED)

Product code: MAK HBY 1092

Outer dia.: 425mm

PCB area: 340mm

Height from glass :15mm

Driver area:240mmx170mmx45mm

Weight : 7.9Kg

CONTACT US

MUMBAI UNIT:

Gala No 115/116, Nirav Industrial Estate Bldg no 4, Satali, Vasai East, Mumbai :- 401208. Mob.- 08390104478, Ph. 0250 - 6458886, 3298008, 6056623 & 6056624.

DELHI UNIT:

Mob : +919999083485

Our websites : www.ledcasting.net & www.maklites.com

Email : maklites@yahoo.co.in ,
maklites.technical@gmail.com ,
maklites.billing@gmail.com