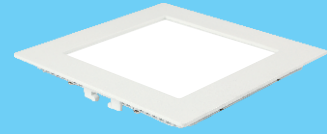




Code Product Cut Out Size Pkg.

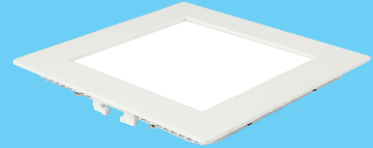
LED PANEL LIGHT - SQUARE (CONCEALED TYPE)

V-101 **4 W.** 230V~Square Panel Light 68 X 68 mm 1
Outer Size : 80 X 80 mm



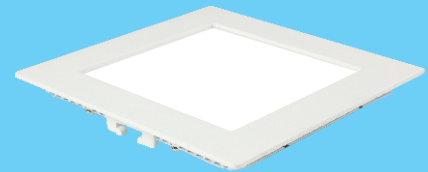
V-101

V-102 **8 W.** 230V~Square Panel Light 98 X 98 mm 1
Outer Size : 110 X 110 mm



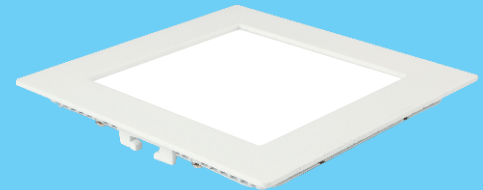
V-102

V-103 **12 W.** 230V~Square Panel Light 135 X 135 mm 1
Outer Size : 150 X 150 mm



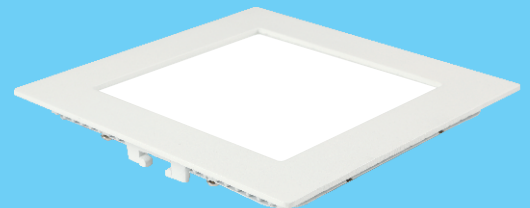
V-103

V-104 **15 W.** 230V~Square Panel Light 165 X 165 mm 1
Outer Size : 180 X 180 mm



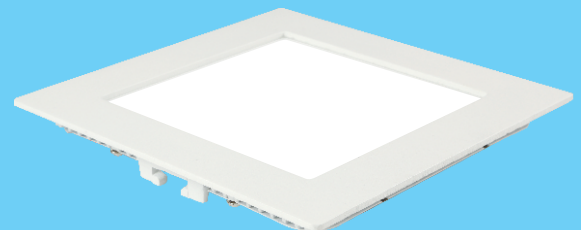
V-104

V-105 **22 W.** 230V~Square Panel Light 205 X 205 mm 1
Outer Size : 220 X 220 mm



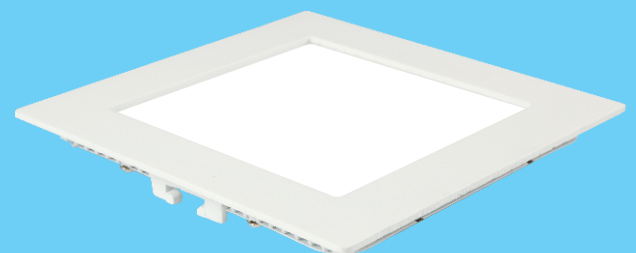
V-105

V-106 **30 W.** 230V~Square Panel Light 285 X 285 mm 1
Outer Size: 300 X 300 mm (1X1)

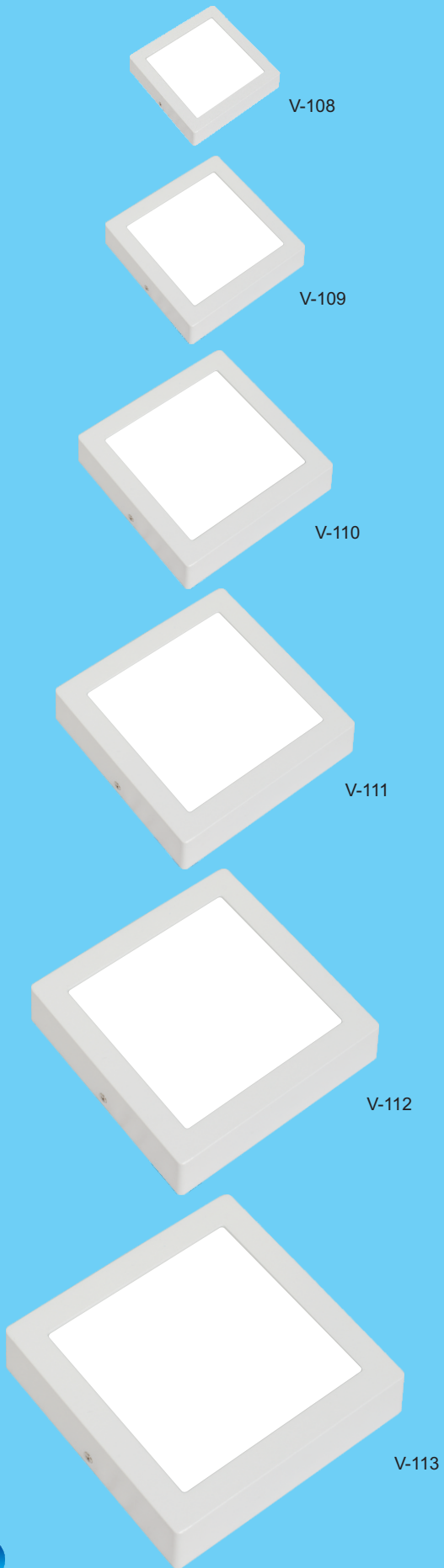


V-106

V-107 **50 W.** 230V~Square Panel Light 580 X 580 mm 1
Outer Size: 595 X 595 mm (2X2)



V-107



Code Product S. Pkg.

LED PANEL LIGHT - SQUARE (SURFACE TYPE)

V-108	4 W. 230V~Square Panel Light Outer Size : 80 X 80 mm	1
V-109	8 W. 230V~Square Panel Light Outer Size : 101 X 101 mm Height : 40 mm	1
V-110	12 W. 230V~Square Panel Light Outer Size : 143 X 143 mm Height : 40 mm	1
V-111	15 W. 230V~Square Panel Light Outer Size : 167 X 167 mm Height : 40 mm	1
V-112	22 W. 230V~Square Panel Light Outer Size : 205 X 205 mm Height : 40 mm	1
V-113	30 W. 230V~Square Panel Light Outer Size: 300 X 300 mm (1X1)	1



Code Product Cut Out Size Pkg.

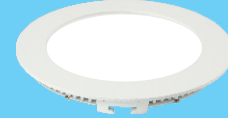
LED PANEL LIGHT - ROUND (CONCEALED TYPE)

V-114	4 W. 230V~Round Panel Light Outer Size : 80 X 80 mm	68 X 68 mm	1
V-115	8 W. 230V~Round Panel Light Outer Size : 110 X 110 mm	98 X 98 mm	1
V-116	12 W. 230V~Round Panel Light Outer Size : 150 X 150 mm	135 X 135 mm	1
V-117	15 W. 230V~Round Panel Light Outer Size : 180 X 180 mm	165 X 165 mm	1
V-118	22 W. 230V~Round Panel Light Outer Size : 220 X 220 mm	205 X 205 mm	1
V-119	1/36 W. 230V~Square Panel Light Outer Size : 520 X 157 mm	510 X 147 mm	1
V-120	2/36 W. 236V~Square Panel Light Outer Size : 533 X 228 mm	520 X 218 mm	1
V-121	1/36 W. 236V~Square Panel Light Outer Size : 533 X 228 mm	520 X 218 mm	1
V-122	40/50 W. 236V~Square Panel Light Outer Size : 595 X 595 mm	585 X 585 mm	1

V-114



V-115



V-116



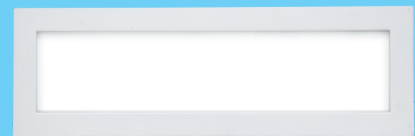
V-117



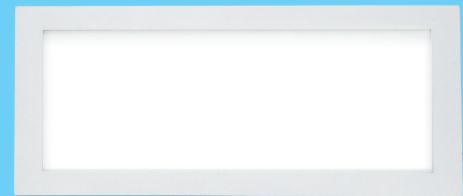
V-118



V-119



V-120



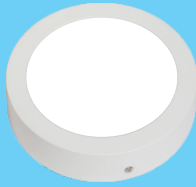
V-121



V-122



PANEL LIGHT



V-123



V-124



V-125



V-126



V-127

Code

Product

S. Pkg.

LED PANEL LIGHT - ROUND (SURFACE TYPE)

V-123	4 W. 230V~Round Panel Light Outer Size : 80 X 80 mm	1
V-124	8 W. 230V~Round Panel Light Outer Size : 103 X 103 mm Height : 40 mm	1
V-125	12 W. 230V~Round Panel Light Outer Size : 145 X 145 mm Height : 40 mm	1
V-126	15 W. 230V~Round Panel Light Outer Size : 172 X 172 mm Height : 40 mm	1
V-127	22 W. 230V~Round Panel Light Outer Size : 205 X 205 mm Height : 40 mm	1



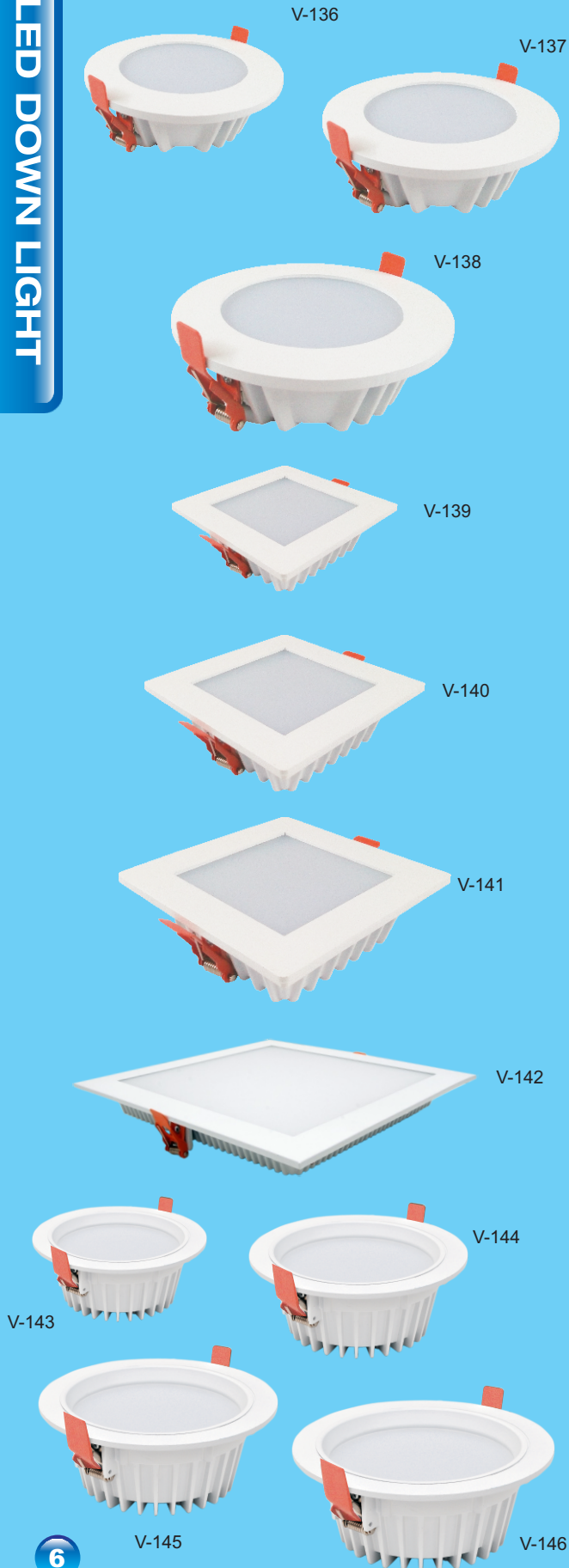
Code Product Cut Out Size Pkg.

COB SPOT LIGHT-ROUND/SQUARE (CONCEALED TYPE)			
V-128	3 - 4 W. 230V~Round / Square COB Spot Light Outer Size : 68 X 68 mm	58 X 58 mm	1
V-129	6 - 7 W. 230V~Round / Square COB Spot Light Outer Size : 88 X 88 mm	68 X 68 mm	1
V-130	10 -12 W. 230V~Round / Square COB Spot Light Outer Size : 105 X 105 mm	95 X 95 mm	1
V-131	10 -12 W. 230V~Round / Square COB Spot Light Outer Size : 100 X 100 mm	90 X 90 mm	1
V-132	15 W. Round Outer Size : 120 X 120 mm Hight Size : 3.5" Inch COB Spot Light	105 X 105 mm	1
V-133	20 W Round Outer Size : 140 X 140 mm Round	120 X 120 mm	1
V-134	30 W Round Outer Size : 165 X 165 mm Round	145 X 145 mm	1
V-135	30 W Round (360° Movable) Outer Size : 155 X 155 mm Round	145 X 145 mm	1
	Available in 50 W Round & Other Watts	175 X 175 mm	1



COB SPOT LIGHT

LED DOWN LIGHT-ROUND/SQUARE (CONCEALED TYPE)



Code	Product	Cut Out Size	Pkg.
V-136	12 W. Round Led Down Light Outer Size : 135 X 135 mm	120 X 120 mm	1
V-137	18 W. Round Led Down Light Outer Size : 170 X 170 mm	155 X 155 mm	1
V-138	24 W. Round Led Down Light Outer Size : 210 X 210 mm	180 X 180 mm	1
V-139	12 W. Square Led Down Light Outer Size : 135 X 135 mm	120 X 120 mm	1
V-140	18 W. Square Led Down Light Outer Size : 165 X 165 mm	155 X 155 mm	1
V-141	24 W Square Led Down Light Outer Size : 195 X 195 mm	175 X 175 mm	1
V-142	30 W. (1X1Ft.) Square Led Back Light Outer Size : 300 X 300 mm	285 X 285 mm	1
V-143	8 W Led Down Light Eco Series (Round) Outer Size : 92 mm	80 X 80 mm	1
V-144	12 W Led Down Light Eco Series (Round) Outer Size : 130 mm	115 X 115 mm	1
V-145	18 W Led Down Light Eco Series (Round) Outer Size : 160 mm	145 X 145 mm	1
V-146	24 W Led Down Light Eco Series (Round) Outer Size : 190 mm	175 X 175 mm	1



Code Product Pkg.

LED STREET LIGHTS

V-147 **12-18 W.** LED Street Light
PCB Size : 70 X 135 mm 1

V-147



V-148



V-148 **24 W.** LED Street Light
PCB Size : 153 X 80 mm 1

V-149 **24-36 W.** LED Street Light
PCB Size : 110 X 185 mm 1

V-149



V-150



V-150 **40-50 W.** LED Street Light
PCB Size : 140 X 205 mm 1

V-151



V-152



V-151 **50-72 W.** LED Street Light
PCB Size : 160 X 220 mm 1

V-152 **100-120 W.** LED Street Light
PCB Size : 213 X 270 mm 1

V-153



Back Side



V-153 **200-250 W.** LED Street Light
PCB Size : 395 X 250 mm 1

LED STREET LIGHT

The logo for V-lite features a large, bold, red letter 'V' with a white outline. A thick red swoosh arches over the 'V' and extends to the right, ending in a small 'TM' trademark symbol. Below the 'V' and swoosh, the word 'lite' is written in a red, lowercase, italicized sans-serif font with a white outline.

V-*lite*™

live life. love life.





Code Product Cut Out Size Pkg.

CFL / PLC SURFACE & OUTSIDE FITTINGS

V-154	1 x 18 W. CFL Surface Mini Fittings & 15 W. Surface LED Ceiling Doom Light Without Border Outer Size : 225 X 225 mm		1
V-155	1 x 13 W. CFL Surface Mini Fittings 12 W. Surface LED Ceiling Doom Light With Border Outer Size : 225 X 225 mm		1
V-156	1 x 18 W. CFL Surface Big Fittings 15 W. Surface LED Ceiling Doom Light With Border Outer Size : 280 X 280 mm		1
V-157	1 x 11 W. CFL Gate Light		1
V-158	1 x 18 W. CFL Gate Light		1
V-159	1 x 18 W. CFL Gate Light (Black Head)		1
V-160	1 x 18 W. CFL Wall Light		1
V-161	1 x 85 W. CFL Highway Fitting Available in LED Highway Fitting 30 W. / 40 W. 50 W. 60 W. / 70 W. With Cover & Without Cover		1

V-154



V-155



V-156



V-157



V-158



V-159



V-160

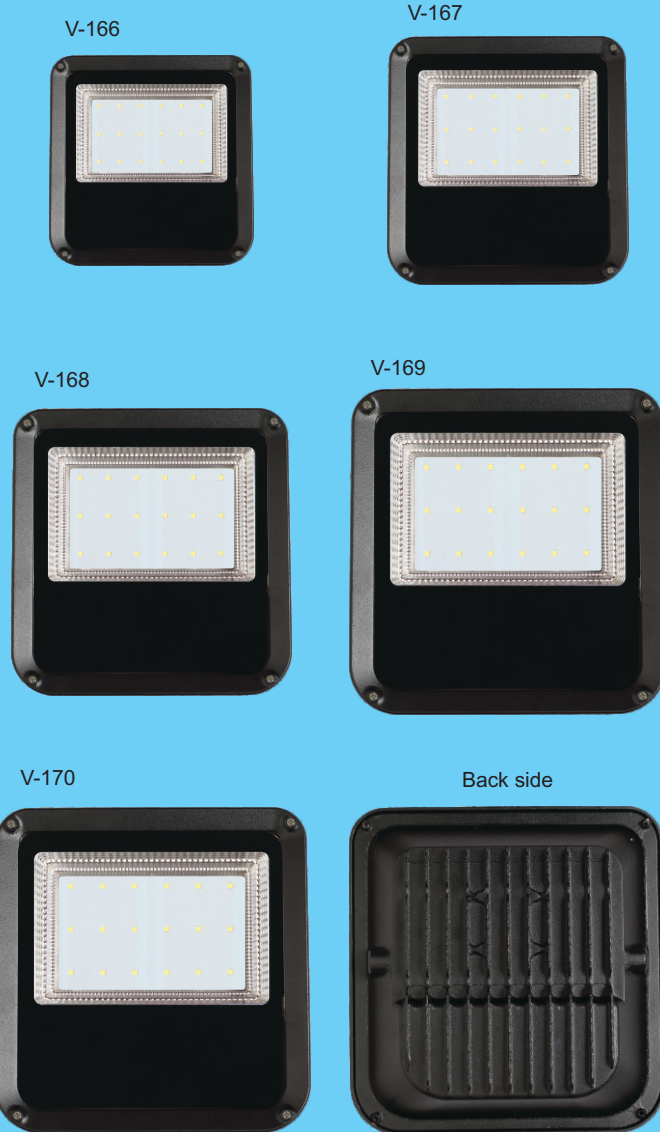


V-161



CFL/PLC FITTINGS

HIGH BAY LIGHTS



D.C.FLOOD LIGHTS

Pkg.	Product	Code
HIGH BAY LIGHTS		
1	50 W High Bay	V-162
1	75 W High Bay	V-163
1	100 W High Bay	V-164
1	150 W High Bay	V-165
DOWN CHOCK FLOOD LIGHTS		
1	30 W Down Chock Flood Lights	V-166
1	50 W Down Chock Flood Lights	V-167
1	72 W Down Chock Flood Lights	V-168
1	100 W Down Chock Flood Lights	V-169
1	150 W Down Chock Flood Lights	V-170



S. Pkg. Product Code

PICTURE LIGHTS

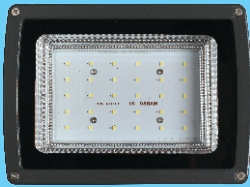
1	1 W LED Button Round & Square	V-171
1	3 W Cob LED Button Round & Square	V-172
1	3 W Cob Surface LED Round & Square	V-173
1	6 W Cob Surface Round	V-174
1	10 W Cob Surface Round	V-175
1	15 W Cob Surface Round	V-176
1	30 W Zoom Square Outer Size : 145 X 235 mm Cutout Size : 135 X 220 mm	V-177
1	30 W Zoom Round Outer Size : 190 mm Cutout Size : 170 mm	V-178
	MR 16 - 7/12 W	V-179



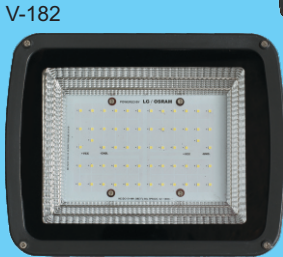
COB SPOT LIGHTS



V-180



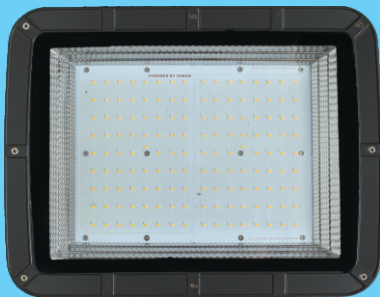
V-181



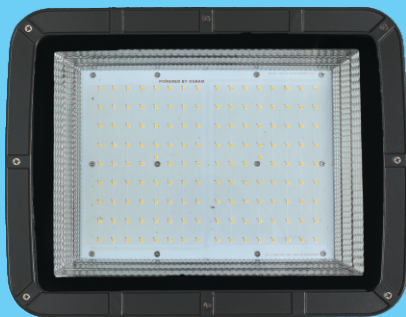
V-182



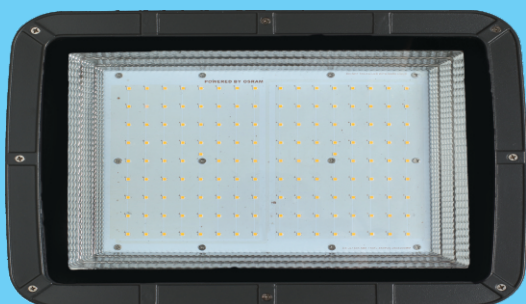
V-183



V-184



V-185



V-186

Pkg.	Cut Out Size	Product	Code
------	--------------	---------	------

FLOOD LIGHT

1		10 W Flood Light Aluminum Casting With Water Proof (Heavy Duty) IP - 65 PCB Size : 60 X 70 mm	V-180
1		20 W / 30 W Flood Light Aluminum Casting With Water Proof (Heavy Duty) IP - 65 PCB Size : 130 X 180 mm	V-181
1		36 W / 50 W Flood Light Aluminum Casting With Water Proof (Heavy Duty) IP - 65 PCB Size : 130 X 190 mm	V-182
1		60 W / 72 W Flood Light Aluminum Casting With Water Proof (Heavy Duty) IP - 65 PCB Size : 120 X 180 mm	V-183
1		100 W / 120 W Flood Light Aluminum Casting With Water Proof (Heavy Duty) IP - 65 PCB Size : 230 X 145 mm	V-184
1		150W - 180 W Flood Light Aluminum Casting With Water Proof (Heavy Duty) IP - 65 PCB Size : 260 X 196 mm	V-185
1		200W - 250 W Flood Light Aluminum Casting With Water Proof (Heavy Duty) IP - 65	V-186



Back Side