

AKSH Manufacturing Pvt. Ltd.

AKSH Slew Ring Bearing

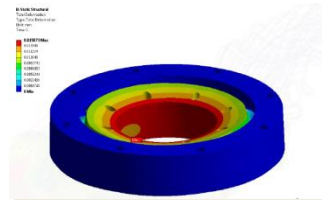
AKSH Slew Ring Bearing

- First of kind product designed, developed, tested in India
- Roller type Slewing Bearings
- Unique “Criss-Cross” roller arrangement
- Applied for Patent



AKSH Bearing Advantage

- ✓ Replacement for spindle/pivot assembly which saves assembly time & cost significantly.
- ✓ Higher Load capacity in comparison with Ball Bearing of same specifications
- ✓ Multi-Directional Use Possible
- ✓ No Spacer – This avoids use of polymers. Hence can withstand temperature effect. This leads to lesser maintenance of Bearing & ultimately increases life.
- ✓ Customization in Solution



Spindle Assembly V/s AKSH Bearing

Parameter	Assembly with use of AKSH Slew Ring Bearing	Spindle Assembly
Design	Simple design. Assembly is with 2 flanges and one AKSH Bearing	Complicated Design.
Manufacturing	Easy for manufacturing.	Complicated manufacturing. This includes machining of pipe, shaft, addition of couple of taper roller bearing.
Cost	Cost effective solution. Saves indirect cost of manhours of manufacturing.	Huge indirect cost of manufacturing and assembly.
Time	Assembly can be done in few hours.	Spindle assembly requires minimum one week for manufacturing and assembly.
Life and Maintenance	This assembly is having higher lifecycle than spindle assembly. Easy for maintenance.	Critical for maintenance as complete assembly needs to be dismantled during maintenance. Again increase in manhour cost.
Total Size of Bearing	With use of AKSH Bearing, total size of assembly would decrease. This indirectly would help in reducing cost further.	?

AKSH Bearing - Industrial Applications



Jib Cranes



Material Handling



Tower/Truck cranes



Welding Fixtures

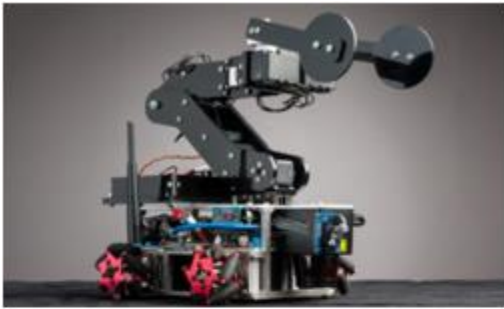


Marine Deck Cranes



Earthmoving Equipments

AKSH Bearing - Industrial Applications



Robotics



Water Treatment



Defense



Wind & Solar



Medical



Packaging

People, we have served



Company History

- Established in 2005
- Started manufacturing of components for material handling, lead screws, shafts, etc
- Started providing solutions than products
- AKSH Slew Ring Bearing Development
- Strategic Business Divisions



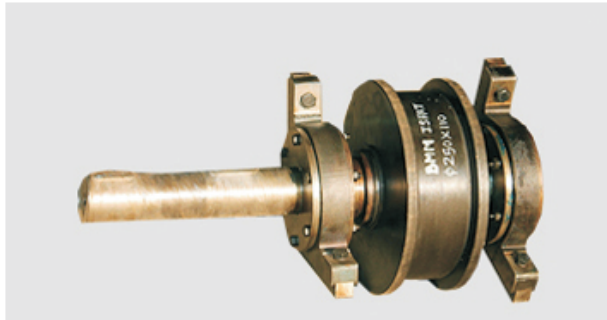
AKSH BEARING

AKSH Bearing division is engaged into design & manufacturing of special type of Slewing Ring Bearings. AKSH Bearings are engineered with perfection & have unique "Roller Criss-Cross" Technology to suite low RPM & high loads.



GearX

Company has launched series of crane duty Gear Boxes & Geared Brake Motors. The series starts from HR 250.



EOT CRANE WHEEL ASSEMBLY

Wheel assembly is the most important part of crane as it provides actual motion to crane.

The assembly consists of various components including wheel, shaft, bearings, housing etc.



CONTRACT MANUFACTURING

AKSH Manufacturing is having strong portfolio with regards to manufacturing of high precision mechanical manufacturing. AKSH has already performed good amount of work for high precise jobs such as lead screws.

Thank You