

**AHMED GROUP'S**  
**METAL CRAFT INDUSTRIES**

**About us:**

Ahmed Group's **Metal craft Industries** is a metal fabrication company that is totally dedicated to serving the sign industry. We believe that our customers should never settle for less than the best. Our goal from the start was, is and always will be to manufacture and deliver the best metal products for the sign industry. When customers want the best, they turn to Metal craft. We are proud of our reputation and will continue to provide quality products and unmatched service to our customers.

We, Ahmed Group, incepted in the year 2006, are well established manufacturers and suppliers of a qualitative range of Industrial and Fabrication Products. These products are available in numerous specifications, which can be customized as per the requirement of our clients. Our range is highly appreciated by our clients for the optimum quality, durability, sturdy construction, corrosion resistance and low maintenance characteristics.

**METAL CRAFT INDUSTRIES**, a Nasik based firm, offering a variety of Lighting Poles, Pipes and Lines Materials. The variety of Lighting Poles Pipes and Lines Materials that we offer includes Tubular Poles (For Street Lighting & Transmission Lines), Solar Poles, Decorative Lighting Poles, Octagonal Poles, High Mast Poles, M.S/G.I. Pipes, Electric Poles, Line Materials etc. Our organization is showing a substantial growth since the time of its establishment in the year 2013. We are flourishing at a fast pace under the due guidance of our knowledgeable, **Chairman Mr. RAHIL AHMED SIDDIQUE**. We have also carved a niche for ourselves among the topmost Poles Suppliers in India.

**Mission:**

To build a strong brand and maintain superior quality standard for customer satisfaction.

**Vision:**

Achieve numerous positions in pole, cable, and pipes industry in terms of volume, turnover and quality in the Asian Continent.

**Quality:**

Our focus on quality is evident in our product range. we have never compromised on quality and have successfully achieved a high level of customer appreciation resulting in long-lasting relations. We undertake stringent quality control measures ensuring supreme product quality. Our quality professionals have served as a beacon not only for us but also for the entire industry in establishing top-notch quality standards.

These are manufactured using best grade raw materials sourced from certified vendors in the industry. We also have a team of quality experts who are facilitated with requisite quality testing equipment. These experts test our range on the various quality parameters to assure its efficiency and durability. Moreover, we also make sure that our range is defect free and ideal for various applications.

**Clientele:**

In the span of 10 years we have been able to establish a huge clientele all over India. Our variety of poles are supplied to government and semi-government bodies like state electricity boards, municipalities, cantonment boards, defense projects, and many private, multi nationals and public sector throughout the country.

**Why Ahmed Group?**

A very valid question for any purchaser as the number of good quality manufacturers approaching the purchaser leaves him in a dilemma to choose the best out of the lot. Every vendor claims to have 1st, claims to be using best quality of raw materials (Electrolytic Copper, high grade Aluminum and claims to be using required grade PVC. particularly giving FR/FIRLS grade insulation, wherever it is claimed.) For the purchaser to arrive at a fairly reasonable selection of a particular brand he needs to ensure confirmation on the following points from the vendor.

**OUR PHILOSOPHY:**

Our methodology of working is structured around our belief that to make innovative and superior products, we have to continually bring improvements to the way we work and deliver our products. Our manufacturing processes are regularly updated to bring the latest technologies to use. This enables us to effectively deploy our resources and manpower to boost production and improve cost efficiency.

## **OUR STRENGTHS:**

Our strength lies in our Latest Machinery, Trained & Experienced Manpower and Customer Service. Our Clients are our best Sales Persons as 97% of our business is through referrals and regular work from our customers itself.

Ahmed Group specializes in manufacturing Industrial Lighting and Commercial Lighting products.

Ahmed Group inherit strength is the built-in-manufacturing capacity to produce a large variety of luminaries through our manufacturing unit which are professionally managed adhering to stringent quality norms.

## **Our Team:**

Our organization is supported with a pool of highly experienced professionals who are hired on the basis of their skills and knowledge. These professionals include Engineers Designers, Technocrats, Quality controllers, R & D experts and Sale & Marketing executives. Our professionals are self-motivated and apply maximum efforts to offer quality products to our clients.

To enhance their skills and ability, we also provide regular training sessions to our team members. Moreover, owing to the support of our team members, we meet the bulk demand of our clients within a committed time frame.

## **Our Products:**

### **High Mast:**

High masts are ideally suitable for the lighting of wide areas like sports ground, stadium, highways, highway interchanges, Airports, Harbors, opens parking lots etc. High masts are manufactured from 18 to 30 Meter or above height and are polygonal in shape with continuous tapered steel and electrical welded. The mast is an assembly of 2-4 shafts joined together by means of pressure over-lapping, section per section, rendering firm grip and are joined by telescopic slings. High masts are available with raising and lowering devices or with a fixed rectangular and tilted head frame

### **Steel Tubular (HT/LT line poles):**

Features:

- Highly durable
- Give high performance at the clients end
- We provide customized Steel Tubular Poles as per the enquiry /drawings of the clients.
- Steel Tubular Poles are cut in square and reasonably straight, smooth and cylindrical manner.
- The poles are painted with black bituminous paint till the planting depth and remaining portion is painted with red oxide primer.
- The poles can be hot dip galvanized or painted as per the client's requirement.
- Uses: For L.T. / H.T. Power transmission lines and Street lighting's confirming to Indian standard 2713/80

### **Conical Poles:**

Conical Poles are hollow polygonal poles having closely circular cross section at both ends and continuously uniformly tapered in shape. This pole are manufactured by giving circular shape to the sheet metal by pressing operations on bending machine, and then subsequently welded and fabricated as required. These poles are hot dip galvanized in single piece up to 13 mtrs length for anti corrosive and anti rust protection. The poles thus manufactured have a very high strength due to their shape in comparison to conventional Swaged poles.

## **Octagonal Pole:**

### Features:

- Manufactured by press shaping of steel plates and welding them longitudinally
- Highly durable
- Available with in-built junction box and decorated brackets
- Octagonal Street Light Pole is duly tested so as to assure their impeccable quality
- Resistant to rust
- Are available in various sizes
- Can be availed as per the customer's specifications

### 1. Poles

- High mast
- Octangle poles
- Conical poles
- Solar Poles
- Swaged tubular poles
- HT/LT line poles
- Cables

### 2. Pipes and Tubes

- Round pipe (MS/ GI/ Seamless)
- Square pipe
- Rectangular
- Scaffolding

### 3. Lines Materials













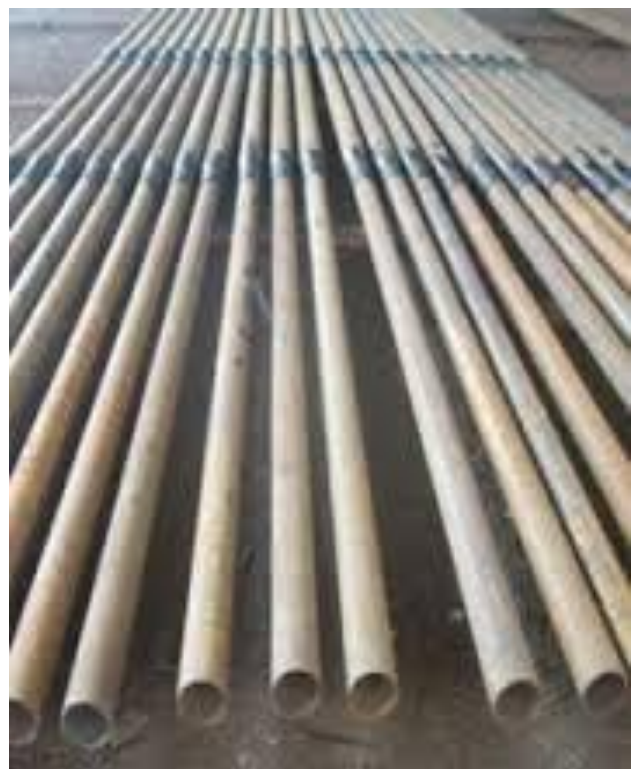
















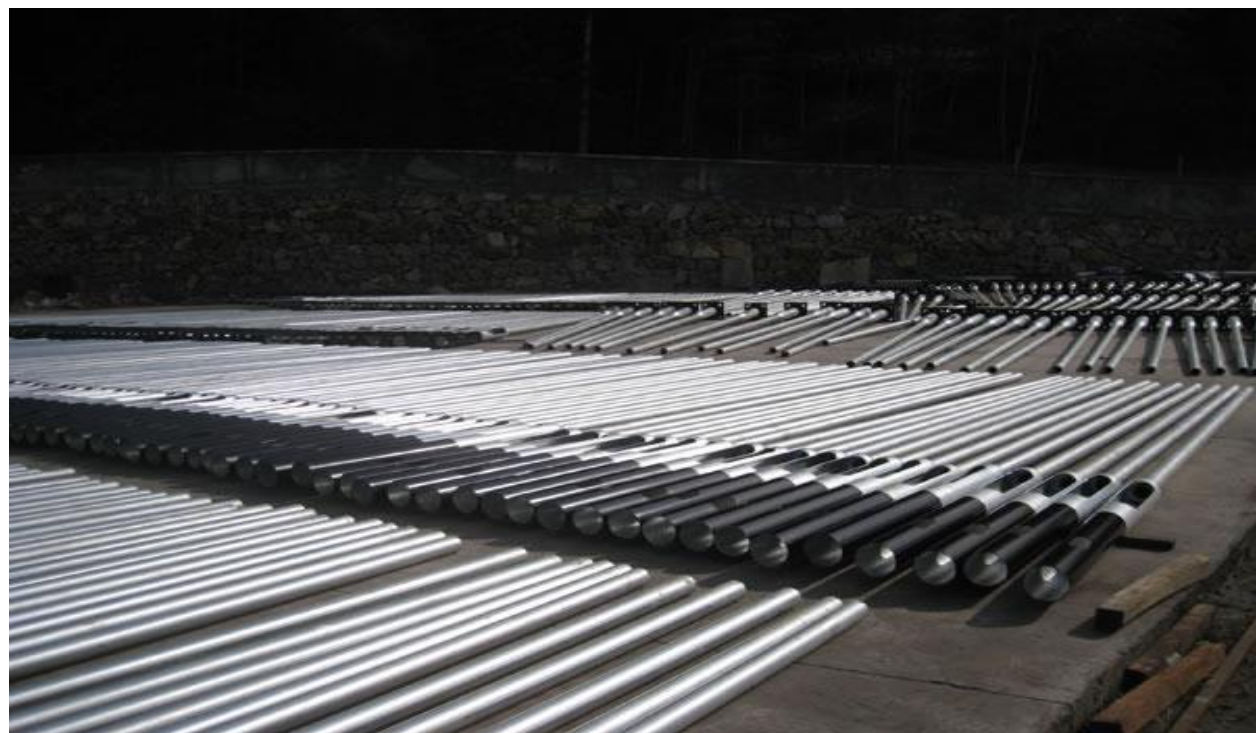










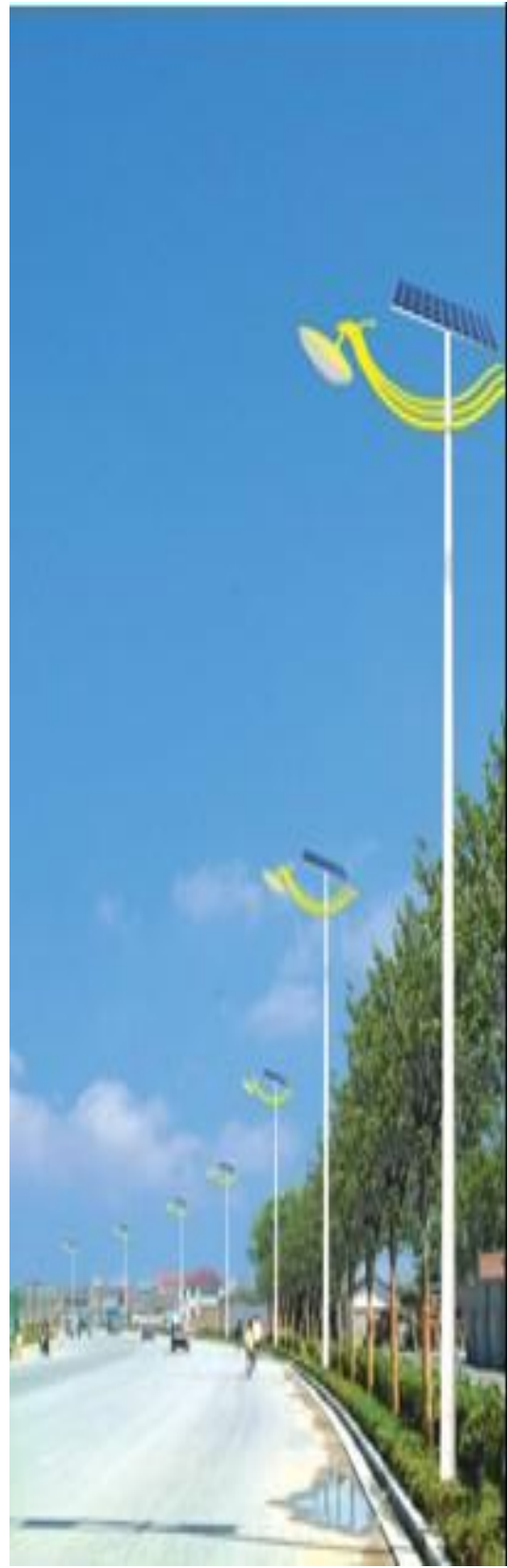
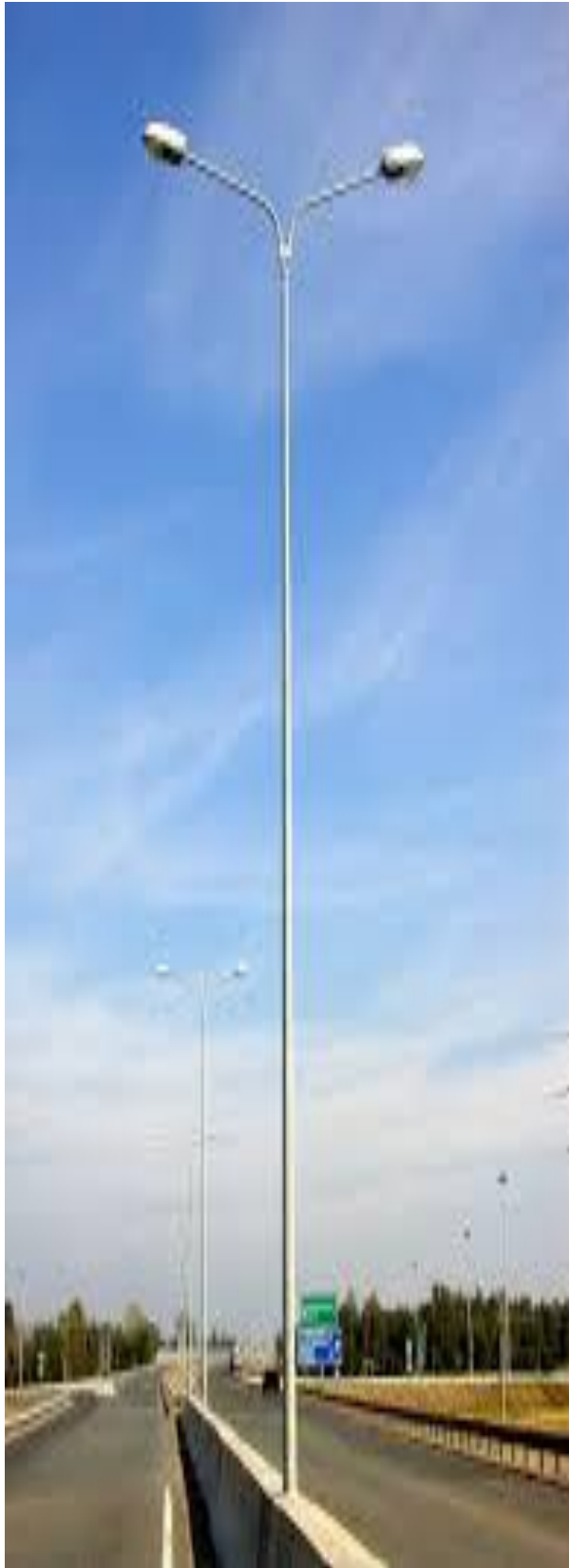















## **OUTOOR LIGHTING Street Light Price List w.e.f.01.06.15**

Picture	Series	Total Wattage	Driver Used	DP	
	HLRR2-15W-5630	15W	Philips/Fulham OR Equivalent	CW/WW/NW	1323
	HLRR2-18W-3030	18W	Philips/Fulham OR Equivalent	CW/WW/NW	1396
	HLRR2-24W-3030	24W	Philips/Fulham OR Equivalent	CW/WW/NW	2021
	HLRR2-30W-3030	30W	Philips/Fulham OR Equivalent	CW/WW/NW	2188
	HLRR2-36W-3030	36W	Philips/Fulham OR Equivalent	CW/WW/NW	2550
	HLRR2-50W-3030	50W	Philips/Fulham OR Equivalent	CW/WW/NW	4376
	HLRR2-60W-3030	60W	Philips/Fulham OR Equivalent	CW/WW/NW	4688
	HLRR2-72W-3030	72W	Philips/Fulham OR Equivalent	CW/WW/NW	5605
	HLRR2-100W-3030	100W	Philips/Fulham OR Equivalent	CW/WW/NW	8924

## **OUTOOR LIGHTING Premium Series Price List w.e.f.01.06.15**

	HLPR2-36W-OSLON	36W	Philips/Fulham OR Equivalent	CW/WW/NW	3230
	HLPR2-45W-OSLON	45W	Philips/Fulham OR Equivalent	CW/WW/NW	4480
	HLPR2-60W-OSLON	60W	Philips/Fulham OR Equivalent	CW/WW/NW	6564
	HLPR2-72W-OSLON	72W	Philips/Fulham OR Equivalent	CW/WW/NW	7841
	HLPR2-80W-OSLON	80W	Philips/Fulham OR Equivalent	CW/WW/NW	9790
	HLPR2-100W-OSLON	100W	Philips/Fulham OR Equivalent	CW/WW/NW	11590
	HLPR2-120W-OSLON	120W	Philips/Fulham OR Equivalent	CW/WW/NW	17253
	HLPR2-130W-OSLON	130W	Philips/Fulham OR Equivalent	CW/WW/NW	17764
	HLPR2-150W-OSLON	150W	Philips/Fulham OR Equivalent	CW/WW/NW	18701
	HLPR2-180W-OSLON	180W	Philips/Fulham OR Equivalent	CW/WW/NW	23263
	HLPR2-200W-OSLON	200W	Philips/Fulham OR Equivalent	CW/WW/NW	24132

### **Flood Light Series**

	HLFL1-36W-3030	36W	Philips/Fulham OR Equivalent	CW/WW/NW	3575
	HLFL1-50W-3030	50W	Philips/Fulham OR Equivalent	CW/WW/NW	4263
	HLFL1-72W-3030	72W	Philips/Fulham OR Equivalent	CW/WW/NW	6112
	HLFL1-90W 3030	90W	Philips/Fulham OR Equivalent	CW/WW/NW	7951
	HLFL1-50W-OSLON	50W	Philips/Fulham OR Equivalent	CW/WW/NW	5833
	HLFL1-60W-OSLON	60W	Philips/Fulham OR Equivalent	CW/WW/NW	5095
	HLFL1-72W-OSLON	72W	Philips/Fulham OR Equivalent	CW/WW/NW	8156
	HLFL1-80W-OSLON	80W	Philips/Fulham OR Equivalent	CW/WW/NW	8713
	HLFL1-90W OSLON	90W	Philips/Fulham OR Equivalent	CW/WW/NW	10642



## ESL-16 Solar Integrate Street& Coutryard Light

1.48 LED total 1000 Lumens Extremely wide lighting Area

2.Can support 3 cloudy or raining days

3.Replacable Lithium battery

4.Intelligent Lighting mold: 12 hours Last lighting time + Motion Sensor lighting

5.Integrate Solar panel and LED panel with Bulid in Switch



## ESL-06 Solar Step/Stair Light

1. Solar Warm LED light: Can support 3-4days lighting from Dusk to Dawn

2. Aluminum case and Waterproof IP65

3. Application: Wall/Stair/Garden/Park/Square/Pathway etc.





## Rocket Street light

### Specification

Model No.	Rocket Street light	
Size	Length:-	400mm
	Height :-	80mm
Wattage	15/20/25	
Material	Aluminium Powder coated.	
CCT	3000k/4000k/6500k	
IP Class		
Lumen output	1000/1600/2000lm	
CRI	80	

GLOBAL LIGHTING INDUSTRIES

## 45Watt Street LED Light



### Specification

Model No.	45Watt Street LED Light	
Size	Length	~ 395mm
	Width	~ 170mm
	Height	~ 75mm
Wattage	45Watt	
Material	Aluminium , Pressure Die Casting	
Colour Temp (K)	3000/4000/6500K	
Colour	Grey	
Lumen	4600	
CRI	80	

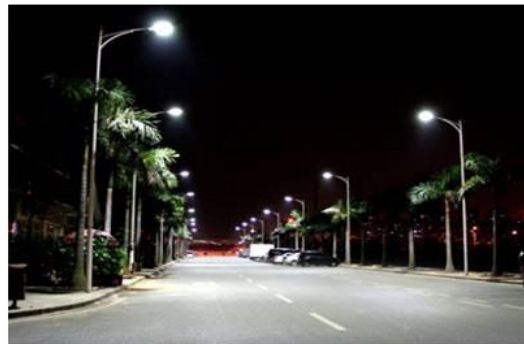


## 60Watt Street LED Light



### Specification

Model No.	60Watt Street LED Light	
Size	Length	– 450mm
	Width	– 210mm
	Height	– 85mm
Wattage	60Watt	
Material	Aluminium , Pressure Die Casting	
Colour Temp (K)	3000/4000/6500K	
Colour	Grey	
Lumen	6200lm	
CRI	80	



## 85Watt Street LED Light



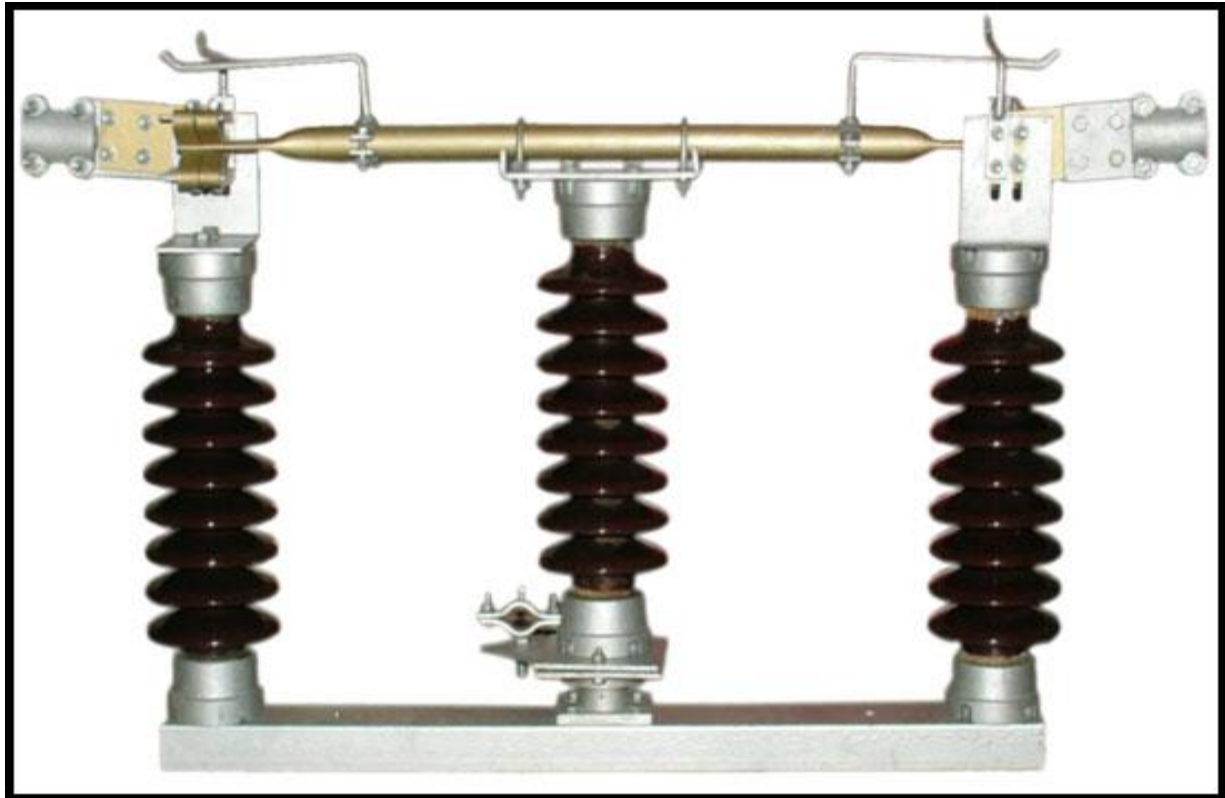
### Specification

Model No.	85 Watt Street LED Light	
Size	Length	– 540
	Width	– 230mm
	Height	– 85mm
Wattage	85Watt	
Material	Aluminium , Pressure Die Casting	
Colour Temp (K)	3000/4000/6500K	
Colour	Grey	
Lumen	8600lm	
CRI	80	













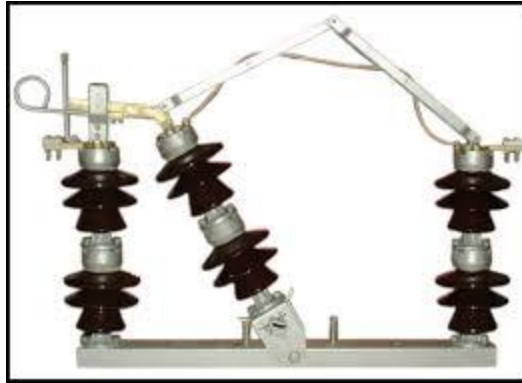












© SIKLO







Download from  
Desirestime.com













