

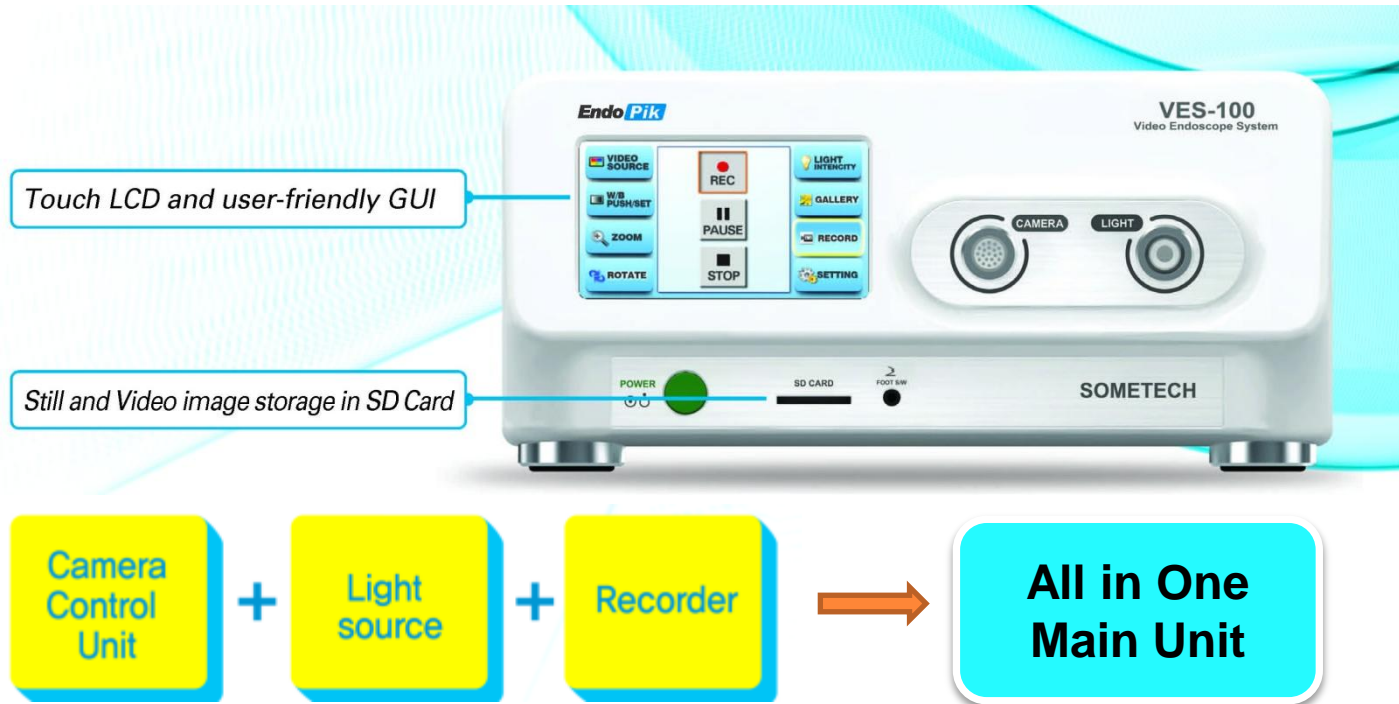


# VES-100

Video Endoscopy System (Endo Pik )

1

# Benefits - Main Unit



- ✓ **Main Unit Integrates Camera Control, Light Source and Recorder all in One System!**
- ✓ **User Friendly UI with LCD Touch Screen**
- ✓ **Images and Videos Can Be Saved to External SD Card**
- ✓ **LED Light Source is Brighter than Xenon 300 Watt Light**
- ✓ **HDMI and USB 3.0 Output**

# Benefits - Camera Head



## Compatible with Rigid Endoscopes



Durable coupler & convenient button

- ✓ **Crystal Clear Image with FULL HD 1080P Resolution**
- ✓ **Easy Zooming Up To 2x Magnification**
- ✓ **Convenient focusing by button**
- ✓ **Compact Camera Head for Easy Handling**



*Crystal clear image [ FULL HD ]*



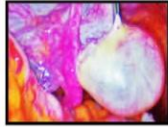
# Application



## Scope

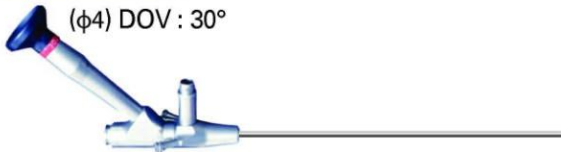
### Laparoscope

( $\phi 5, \phi 10$ ) DOV : 0°, 30°



### Spinescope

( $\phi 4$ ) DOV : 30°



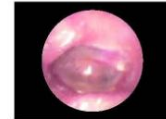
### Hysteroscope

( $\phi 4$ ) DOV : 0°, 30°



### ENT

- **Otoscope** ( $\phi 2.7$ ) DOV : 0°, 30°



- **Sinusscope** ( $\phi 2.7, \phi 4$ ) DOV : 0°, 30°



- **Laryngoscope** ( $\phi 8$ ) DOV : 70°, 90°

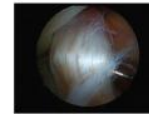


### Arthroscope

( $\phi 1.9$ ) DOV : 30°



( $\phi 2.7$ ) DOV : 30°



( $\phi 4$ ) DOV : 30°



✓ Various Scopes can be attached via Universal Coupler

# Accessories

Light Guide Cable

SDHC Memory Card 32G Class 10

Foot Switch

USB keyboard(optional)

Scope

- Laparoscope
- Spinescope
- Otoscope
- Sinusscope
- Laryngoscope
- Hysteroscope
- Athroscope



- Zoom-In, Zoom-out
- Convenient Focusing
- Freeze / Live image convertible



# Application

## OB/GYN

Hysterectomy / Uterine Myoma / Endometriosis / Cervical Cancer / Ovarian Tumor / Infertility Procedures / Pelvic Lymphadenectomy

## G/S

Cholecystectomy / Proctocolectomy / Pancreas / Colorectal Cancer / Nissen Fundoplication / Colectomy / Gastric Cancer

## Urology

Renal Extirpation / Renal Cancer / Renal Cyst / Radical Prostatectomy / Nephrectomy and Partial Nephrectomy / Pelvic Floor Reconstruction / Pyeloplasty / Ureteral Cancer

# Specification

Item	Section	Specification
Main Unit	Size	Width(310mm) x Height(140mm) x Depth(310mm)
	Power	Main Power: 85~264V, AC Max 100W, Universal AC Input / Full range Soft Power: Software Controlled, Power On/Off Action for System Stability
	Video Out	HDMI, 1920x1080I/60 ,1920x1080P/30
	Storage	SDHC, Standard 32G USB 2.0 Memory Storage
	GUI	5inch TFT LCD Touch Screen
	Recording	MPEG-4/H.264, File Extension *.AVI
	Image Capture	JPG, 1920x1080
	Light Source	White LED Cold Light, 6500° K

# Specification

Item	Section	Specification
Camera	Size	Width(40mm) x Height(48mm) x Depth(50mm)
	Resolution	FULL-HD
	Coupler	Rigid Endoscope Compatible
	Cable Length	Camera Cable - 3 Meters Light Source Cable - 3.5 Meters
Scope	Laparoscope	(Φ5, Φ10)DOV:30°
	Spinescope	(Φ4)DOV:30°
	Otoscope	(Φ2.7)DOV:0°, 30°
	Sinusscope	(Φ2.7, Φ4)DOV:0°, 30°
	Laryngoscope	(Φ8)DOV:70°, 90°
	Hysteroscope	(Φ4)DOV:0°, 30°



# Specification

Item	Section	Specification
<b>Main Unit Menu</b>	<b>Video Source</b>	<b>Color, Bright, Contrast, Sharpness, Exposure Area, Exposure Level, Gamma Level, Default Load</b>
	<b>White Balance</b>	<b>White Balance &amp; Push Set Focusing</b>
	<b>Zoom</b>	<b>Digital Zoom 1.0x ~2.0X (200%)</b>
	<b>Image Rotate</b>	<b>Normal (0') , Rotate(180' &amp; flip)</b>
	<b>Light Intensity</b>	<b>Step : 0 (Off)~ 10(Max)</b>
	<b>Gallery View</b>	<b>Record, Play/Stop/Fast Play(x2 &lt;&lt;,&gt;&gt;), Delete, Copy, Rename, PageUp, PageDown, Home, End</b>
	<b>Settings</b>	<b>Target Storage, Format SDHS/USB, Recoding Resolution, Clock</b>