



Water Supply Product Guide



Index



2	MHE	Horizontal Multistage Pumps – SS 304
4	MVI	Vertical Multistage Pumps – SS 304
8	ASG	Horizontal Single Stage Pumps – SS 304
12	SPS	Deep Well Submersible Pumps 4” and 6” – SS 304
16	SPP	Deep Well Submersible Pumps 4” – Composite
21	SPC	Deep Well Submersible Pumps 6”-14” – SS 304
27	WXZ	Close Coupled Single Stage Pumps – CI
31	WXC	Long Coupled Single Stage Pumps – CI
39	CXDE	Electronic Stable Pressure Booster
41	VMF	MVI Variable Frequency Constant Pressure Booster
45	HSF	ASG Variable Frequency Constant Pressure Booster
47	2MXF	2 MXF Booster Set Variable Frequency Constant
49	2 VMF	2xMVI Variable Frequency Constant Pressure Booster
53	2 HSF	2X ASG Variable Frequency Constant Pressure Booster
55	PT	Pressure Tank
56	FB	Fiberglass Filter
58	HT	Multiport Valves
59	SFC	Top-Mount Sand Filter System
60	PG	Pressure Gauge
63	TMAS	Single Slot Shims



MHE Horizontal Multistage Pumps – SS 304 (Option SS316)

Series MHE is a Horizontal Multistage Stainless Steel pump. All wetted parts including the volute casing, shaft and impeller are made of SS304 (SS316 optional) for long endurance and rust free transfer of liquids. The multistage design is to achieve an increase in the pump discharge pressure by the number of impellers, without changing the flow rate.

MHE 2

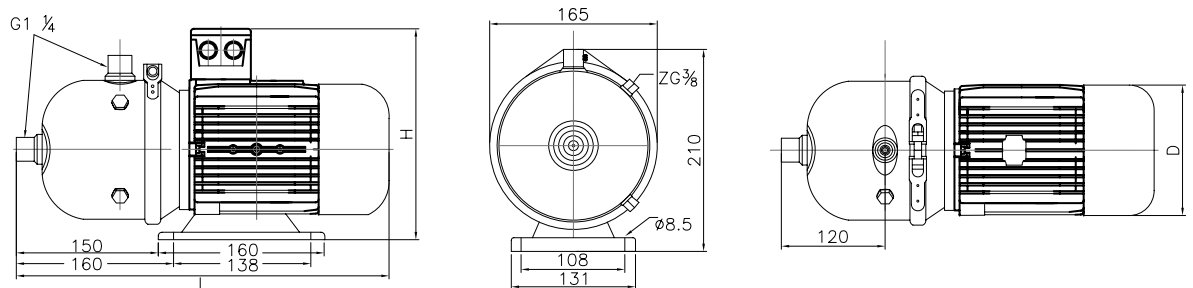
2900rpm

Cat.	HP/KW	Motor (V)	Q (Flow Rate)								Dimensions (mm)			Inlet Outlet	Wt. (kg)
			ℓ/min	8.35	16.7	25.05	33.4	41.75	50.1	58.45	L	H	D		
			m ³ /hr	0.5	1.0	1.5	2	2.5	3.0	3.5					
MHE 2-20	0.5 / 0.37	230M 230/400T	19	18	16	14	13	11	9	400	220	145	RP 1" RP 1"	10	
MHE 2-30	0.75 / 0.55	230M 230/400T	28	27	24	21	20	17	14	400	220	145	RP 1" RP 1"	10	
MHE 2-40	0.75 / 0.55	230M 230/400T	36	34	32	28	26	23	17	400	220	145	RP 1" RP 1"	10	
MHE 2-50	0.75 / 0.55	230M 230/400T	46	43	40	35	33	28	22	400	220	145	RP 1" RP 1"	10	
MHE 2-60	1.0 / 0.75	230M 230/400T	54	50	48	42	38	33	25	445	225	145	RP 1" RP 1"	10	

MHE 4

2900rpm

Cat.	HP/KW	Motor (V)	Q (Flow Rate)								Dimensions (mm)			Inlet Outlet	Wt. (kg)
			ℓ/min	16.7	33.4	50.1	66.8	83.5	100.2	116.9	L	H	D		
			m ³ /hr	1	2	3	4	5	6	7					
MHE 4-20	0.75 / 0.55	230M 230/400T	19	18	16	15	13	10	7	400	220	145	RP 1 1/4" RP 1"	10	
MHE 4-30	1.0 / 0.75	230M 230/400T	28	27	24	22	19	15	10	445	220	170	RP 1 1/4" RP 1"	10	
MHE 4-40	1.0 / 0.75	230M 230/400T	38	36	32	30	26	20	14	445	220	170	RP 1 1/4" RP 1"	10	



MHE Horizontal Multistage Pumps – SS 304 (Option SS316)

Applications

- Water Supply
- Pressure Boosting
- Reverse Osmosis
- Light Chemical Industry
- Food Processing
- Industrial Cleaning
- Cooling System
- Air-Conditioning System

Working Conditions

- Clean, non-flammable, non-explosive liquid without solid grain and fiber
- Mineral Water, Soft Water, Pure Water, Light Chemical etc.
- Liquid temperature :
- Ambient temperature -15°C ~ +70°C
- Hot Water Temperature +70°C ~ +110°C
- Environmental Temperature : +40°C
- Max Operating Pressure : 10Bar

Mechanical Seal

- Sic/Car/EPDM (Standard)
- Sic/Sic/Viton (Option)



MHE 8

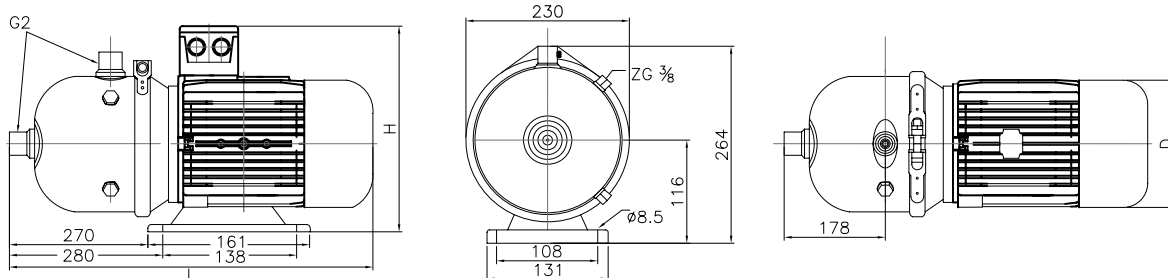
2900rpm

Cat.	HP/KW	Motor (V)	Q (Flow Rate)								Dimensions (mm)			Inlet Outlet	Wt. (kg)
			ℓ/min	83.5	100.2	116.9	133.6	150.3	167	183.7	L	H	D		
			m³/hr	5	6	7	8	9	10	11					
MHE 8-10	1.0 / 0.75	230/400T	9.5	9.3	9	8.5	7.5	6.5	5.5	540	230	145	RP 2" RP 2"	20	
MHE 8-20	1.0 / 0.75	230/400T	19	18.5	18	17	13	11	11	560	230	170	RP 2" RP 2"	25	
MHE 8-30	1.5 / 1.1	230/400T	29	28	27	25.5	20	17.5	17.5	570	230	180	RP 2" RP 2"	25	
MHE 8-40	2.0 / 1.5	230/400T	39	38	36	30	26.5	22.5	22.5	590	230	180	RP 2" RP 2"	30	
MHE 8-50	3.0 / 2.2	230/400T	49	47	45	38	33.5	28	28	590	230	180	RP 2" RP 2"	30	

MHE 16

2900rpm

Cat.	HP/KW	Motor (V)	Q (Flow Rate)								Dimensions (mm)			Inlet Outlet	Wt. (kg)	
			ℓ/min	133.6	167	200.4	233.8	267.2	300.6	334	367.4	L	H			D
			m³/hr	8	10	12	14	16	18	20	22					
MHE 16-10	1.5 / 1.1	230/400T	12.5	12	11.5	10.5	10	9	7.5	6.5	560	220	170	RP 2" RP 2"	20	
MHE 16-20	3.0 / 2.2	230/400T	25.5	24	23	22	21	19	17	14.5	570	230	180	RP 2" RP 2"	25	
MHE 16-30	4.0 / 3.0	230/400T	38.5	37	36	34	32	30	27	23	590	230	180	RP 2" RP 2"	25	





MVI Vertical Multistage Pumps – SS304/SS316

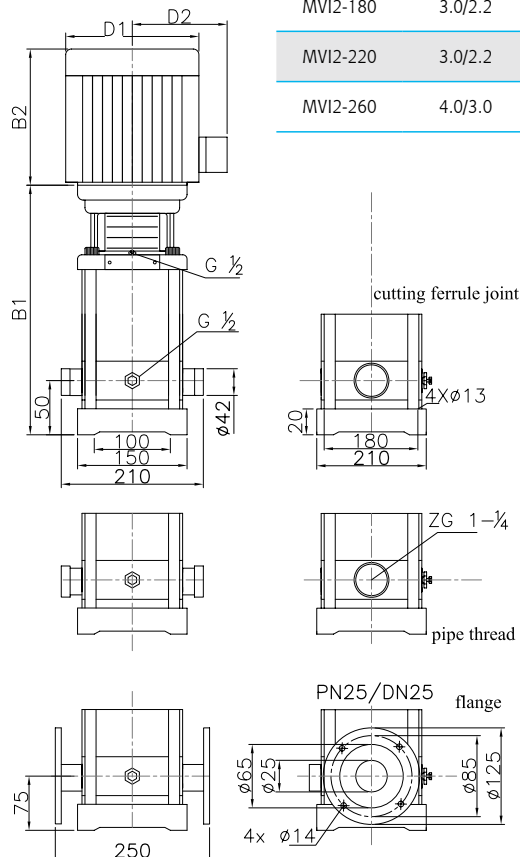
Series MVI is a Vertical Multistage Stainless Steel pump. All wetted parts including the volute casing, shaft and impeller are made of SS304 (SS316 optional) for long endurance and rust free transfer of liquids. The multistage design is to achieve an increase in the pump discharge pressure by the number of impellers, without changing the flow rate.

MVI(F) 2

SPECIFICATION

2900rpm

Cat.	HP/KW	Motor (V)	Q (Flow Rate)								
			ℓ/min	16.7	20.04	26.72	33.4	40.08	46.76	53.44	58.45
			m ³ /hr	1	1.2	1.6	2.0	2.4	2.8	3.2	3.5
MVI2-20	0.5/0.37	230M 230/400T	18	17	16	15	13	12	10	8	
MVI2-30	0.5/0.37	230M 230/400T	27	26	24	22	20	18	15	12	
MVI2-40	0.75/0.55	230M 230/400T	36	35	33	30	26	24	20	16	
MVI2-50	0.75/0.55	230M 230/400T	45	43	40	37	33	30	24	20	
MVI2-60	1.0/0.75	230M 230/400T	53	52	50	45	40	36	30	24	
MVI2-70	1.0/0.75	230M 230/400T	63	61	57	52	47	41	35	28	
MVI2-90	1.5/1.1	230M 230/400T	80	78	73	67	61	54	45	37	
MVI2-110	1.5/1.1	230M 230/400T	98	95	89	82	73	64	54	44	
MVI2-130	2.0/1.5	230M 230/400T	116	114	106	98	89	78	95	52	
MVI2-150	2.0/1.5	230M 230/400T	134	130	123	112	100	90	73	60	
MVI2-180	3.0/2.2	230M 230/400T	161	157	148	136	121	108	91	76	
MVI2-220	3.0/2.2	230M 230/400T	197	192	180	165	148	130	110	90	
MVI2-260	4.0/3.0	230/400T	232	228	214	198	179	158	130	110	



Dimensions / Electrical Data

Pump Type	Motor			Dimensions(mm)					Wt Kg
	HP/Kw	I #220V	I #380V	B1	B2	B1+B2	D1	D2	
MVI 2-20	0.5/0.37	1.69A	0.98A	220	223	443	138	119	20
MVI 2-30	0.5/0.37	1.69A	0.98A	238	223	461	138	119	20
MVI 2-40	0.75/0.55	2.40A	1.39A	256	197	453	138	119	20
MVI 2-50	0.75/0.55	2.40A	1.39A	274	197	471	138	119	20
MVI 2-60	1.0/0.75	3.09A	1.79A	297	244	541	158	127	25
MVI 2-70	1.0/0.75	3.09A	1.79A	315	244	559	158	127	25
MVI 2-90	1.5/1.1	4.37A	2.53A	351	244	595	158	127	30
MVI 2-110	1.5/1.1	4.37A	2.53A	387	244	631	158	127	30
MVI 2-130	2.0/1.5	5.82A	3.37A	440	267	707	193	151	35
MVI 2-150	2.0/1.5	5.82A	3.37A	476	267	743	193	151	35
MVI 2-180	3.0/2.2	8.17A	4.73A	530	267	797	193	151	40
MVI 2-220	3.0/2.2	8.17A	4.73A	602	267	869	193	151	45
MVI 2-260	4.0/3.0	10.90A	6.31A	682	292	974	217	160	50

* B2 is depended on motor length.

MVI Vertical Multistage Pumps – SS304/SS316

Applications

- Urban Water Supply
- Pressure Boosting for Building, Cleaning, Wash-down
- Industrial Circulating System and Processing System
- Water Supply for Boiler and Condensate System
- Environmental Water Treatment
- Reverse Osmosis Process
- Machine Tools Lubrication

Working Conditions

- Hot and cold clean, non-flammable, non-explosive liquid without solid grain and fiber
- Liquid temperature :
- Ambient temperature -15°C ~ +70°C
- Hot Water Temperature +70°C ~ +110°C
- Environmental Temperature : +40°C
- Max Operating Pressure : 10Bar

Mechanical Seal

Rotating Face	Stationary Face	Rubber Material
Tungsten Carbide	Tungsten Carbide	EPDM
		Silicone Rubber
		Viton
Tungsten Carbide	Carbon	EPDM
		Silicone Rubber
		Viton
Carbon	Silicon Carbide	EPDM
		Silicone Rubber
		Viton



MVI(F) 4

SPECIFICATION

2900rpm

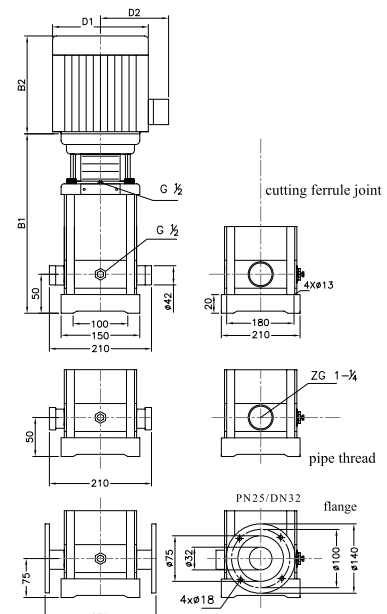
Cat.	HP/KW	Motor (V)	Q (Flow Rate)								
			ℓ/min	25.05	33.4	50.1	66.8	83.5	100.2	116.9	133.6
			m ³ /hr	1.5	2.0	3.0	4.0	5.0	6.0	7.0	8.0
MVI4-20	0.5/0.37	230M 230/400T	19	18	17	15	13	10	8	6	
MVI4-30	0.75/0.55	230M 230/400T	28	27	26	24	20	18	13	10	
MVI4-40	1.0/0.75	230M 230/400T	38	36	34	32	27	24	19	13	
MVI4-50	1.5/1.1	230M 230/400T	47	45	43	40	34	31	23	17	
MVI4-60	1.5/1.1	230M 230/400T	56	54	52	48	41	37	28	20	
MVI4-70	2.0/1.5	230M 230/400T	66	63	61	56	48	43	33	24	
MVI4-80	2.0/1.5	230M 230/400T	74	72	70	64	55	50	38	27	
MVI4-100	3.0/2.2	230M 230/400T	96	90	87	81	71	62	48	34	
MVI4-120	3.0/2.2	230M 230/400T	114	108	104	95	85	75	58	41	
MVI4-140	4.0/3.0	230/400T	136	126	122	112	101	89	68	48	
MVI4-160	4.0/3.0	230/400T	152	144	140	129	115	101	78	55	
MVI4-190	5.5/4.0	230/400T	183	171	168	153	137	122	93	67	
MVI4-220	5.5/4.0	230/400T	211	200	192	178	160	138	108	79	

H (m)

Dimensions / Electrical Data

Pump Type	Motor			Dimensions(mm)					Wt Kg
	HP/Kw	I ^W 220V	I ^W 380V	B1	B2	B1 + B2	D1	D2	
MVI 4-20	0.5/0.37	1.69A	0.98A	238	223	461	138	119	20
MVI 4-30	0.75/0.55	2.40A	1.39A	265	197	462	138	119	20
MVI 4-40	1.0/0.75	3.09A	1.79A	297	244	541	158	127	20
MVI 4-50	1.5/1.1	4.37A	2.53A	324	244	568	158	127	20
MVI 4-60	1.5/1.1	4.37A	2.53A	351	244	595	158	127	20
MVI 4-70	2.0/1.5	5.82A	3.37A	395	267	662	158	151	25
MVI 4-80	2.0/1.5	5.82A	3.37A	422	267	689	193	151	25
MVI 4-100	3.0/2.2	8.17A	4.73A	476	267	743	193	151	30
MVI 4-120	3.0/2.2	8.17A	4.73A	530	267	797	193	151	30
MVI 4-140	4.0/3.0	10.90A	6.32A	592	292	884	217	160	35
MVI 4-160	4.0/3.0	10.90A	6.32A	646	292	938	217	160	35
MVI 4-190	5.5/4.0	13.63A	7.89A	727	336	1063	232	168	35
MVI 4-220	5.5/4.0	13.63A	7.89A	808	336	1144	232	168	40

* B2 is depended on motor length.





MVI Vertical Multistage Pumps – SS304/SS316

Series MVI is a Vertical Multistage Stainless Steel pump. All wetted parts including the volute casing, shaft and impeller are made of SS304 (SS316 optional) for long endurance and rust free transfer of liquids. The multistage design is to achieve an increase in the pump discharge pressure by the number of impellers, without changing the flow rate.

MVI(F) 8

SPECIFICATION

2900rpm

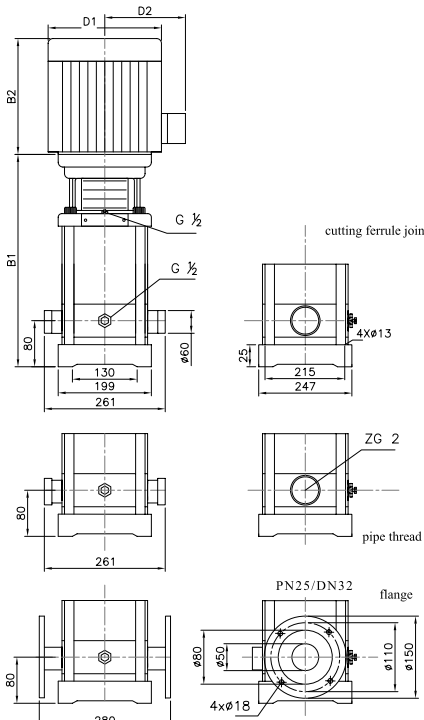
Cat.	HP/KW	Motor (V)	Q (Flow Rate)								
			l/min	83.5	100.2	116.9	133.6	150.3	167	183.7	200.4
			m ³ /hr	5	6	7	8	9	10	11	12
MVI8-20/1	1.0/0.75	230/400T	19	18	17	15	13	10	8	6	
MVI8-20	1.0/0.75	230/400T	28	27	26	24	20	18	13	10	
MVI8-30	1.5/1.1	230/400T	38	36	34	32	27	24	19	13	
MVI8-40	2.0/1.5	230/400T	47	45	43	40	34	31	23	17	
MVI8-50	3.0/2.2	230/400T	56	54	52	48	41	37	28	20	
MVI8-60	3.0/2.2	230/400T	66	63	61	56	48	43	33	24	
MVI8-80	4.0/3.0	230/400T	74	72	70	64	55	50	38	27	
MVI8-100	5.5/4.0	230/400T	96	90	87	81	71	62	48	34	
MVI8-120	5.5/4.0	230/400T	114	108	104	95	85	75	58	41	
MVI8-140	7.5/5.5	230/400T	136	126	122	112	101	89	68	48	
MVI8-160	7.5/5.5	230/400T	152	144	140	129	115	101	78	55	
MVI8-180	10/7.5	230/400T	183	171	168	153	137	122	93	67	
MVI8-200	10/7.5	230/400T	211	200	192	178	160	138	108	79	

H (m)

Dimensions / Electrical Data

Pump Type	Motor			Dimensions(mm)					Wt Kg
	HP/Kw	I ^u 220V	I ^u 380V	B1	B2	B1+B2	D1	D2	
MVI 8-20/1	1.0/0.75	30.9A	1.79A	345	244	589	158	127	35
MVI 8-20	1.0/0.75	3.09A	1.79A	350	244	594	158	127	35
MVI 8-30	1.5/1.1	4.37A	2.53A	380	244	624	158	127	35
MVI 8-40	2.0/1.5	5.82A	3.37A	420	267	687	193	151	45
MVI 8-50	3.0/2.2	8.17A	4.73A	450	267	717	193	151	50
MVI 8-60	3.0/2.2	8.17A	4.73A	480	267	747	193	151	50
MVI 8-80	4.0/3.0	10.90A	6.31A	550	292	842	217	160	55
MVI 8-100	5.5/4.0	13.6A	7.89A	610	336	946	232	168	55
MVI 8-120	5.5/4.0	13.6A	7.89A	670	336	1006	232	168	60
MVI 8-140	7.5/5.5	18.7A	10.85A	750	396	1146	279	179	85
MVI 8-160	7.5/5.5	18.7A	10.85A	810	396	1206	279	179	85
MVI 8-180	10/7.5	25.1A	14.53A	870	396	1266	279	179	90
MVI 8-200	10/7.5	25.1A	14.53A	930	396	1326	279	179	90

* B2 is depended on motor length.



MVI Vertical Multistage Pumps – SS304/SS316

Applications

- Urban Water Supply
- Pressure Boosting for Building, Cleaning, Wash-down
- Industrial Circulating System and Processing System
- Water Supply for Boiler and Condensate System
- Environmental Water Treatment
- Reverse Osmosis Process
- Machine Tools Lubrication

Working Conditions

- Hot and cold clean, non-flammable, non-explosive liquid without solid grain and fiber
- Liquid temperature :
- Ambient temperature -15°C ~ +70°C
- Hot Water Temperature +70°C ~ +110°C
- Environmental Temperature : +40°C
- Max Operating Pressure : 10Bar

Mechanical Seal

Rotating Face	Stationary Face	Rubber Material
Tungsten Carbide	Tungsten Carbide	EPDM
		Silicone Rubber
		Viton
Tungsten Carbide	Carbon	EPDM
		Silicone Rubber
		Viton
Carbon	Silicon Carbide	EPDM
		Silicone Rubber
		Viton



MVI(F) 16

SPECIFICATION

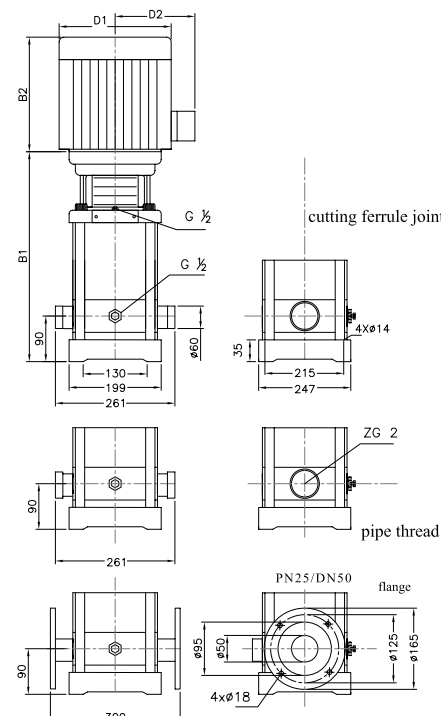
2900rpm

Cat.	HP/KW	Motor (V)	Q (Flow Rate)								
			ℓ/min	133.6	167	200.4	233.8	267.2	300.6	334	367.4
			m ³ /hr	8	10	12	14	16	18	20	22
MVI16-20	3.0/2.2	230/400T	27	26	25	24	22	21	19	16	
MVI16-30	4.0/3.0	230/400T	41	40	38	37	34	32	29	25	
MVI16-40	5.5/4.0	230/400T	54	53	52	49	46	43	38	34	
MVI16-50	7.5/5.5	230/400T	68	67	65	62	58	54	48	43	
MVI16-60	7.5/5.5	230/400T	82	80	78	74	70	64	58	52	
MVI16-70	10/7.5	230/400T	96	95	91	87	85	76	68	61	
MVI16-80	10/7.5	230/400T	110	108	104	99	94	86	77	70	
MVI16-100	15/11	230/400T	138	136	131	125	118	109	97	87	
MVI16-120	15/11	230/400T	166	162	157	150	141	130	116	105	
MVI16-140	20/15	230/400T	194	190	184	175	166	152	136	122	
MVI16-160	20/15	230/400T	222	217	210	200	189	174	156	140	

Dimensions / Electrical Data

Pump Type	Motor			Dimensions(mm)					Wt Kg
	HP/Kw	I 1 [∅] 220V	I 1 [∅] 380V	B1	B2	B1 + B2	D1	D2	
MVI 16-20	3.0/2.2	8.17A	4.73A	400	290	690	190	155	40
MVI 16-30	4.0/3.0	10.91A	6.31A	455	315	770	197	165	50
MVI 16-40	5.5/4.0	13.6A	7.89A	500	335	835	230	188	55
MVI 16-50	7.5/5.5	18.7A	10.85A	565	430	995	260	208	70
MVI 16-60	7.5/5.5	18.7A	10.85A	610	430	1040	260	208	75
MVI 16-70	10/7.5	25.1A	14.53A	655	430	1085	260	208	80
MVI 16-80	10/7.5	25.1A	14.53A	700	430	1130	260	208	80
MVI 16-100	15/11	36.2A	20.95A	820	490	1310	330	255	140
MVI 16-120	15/11	36.2A	20.95A	910	490	1400	330	255	145
MVI 16-140	20/15	48.2A	27.9A	1000	490	1490	330	255	160
MVI 16-160	20/15	48.2A	27.9A	1000	490	1580	330	255	165

* B2 is depended on motor length.





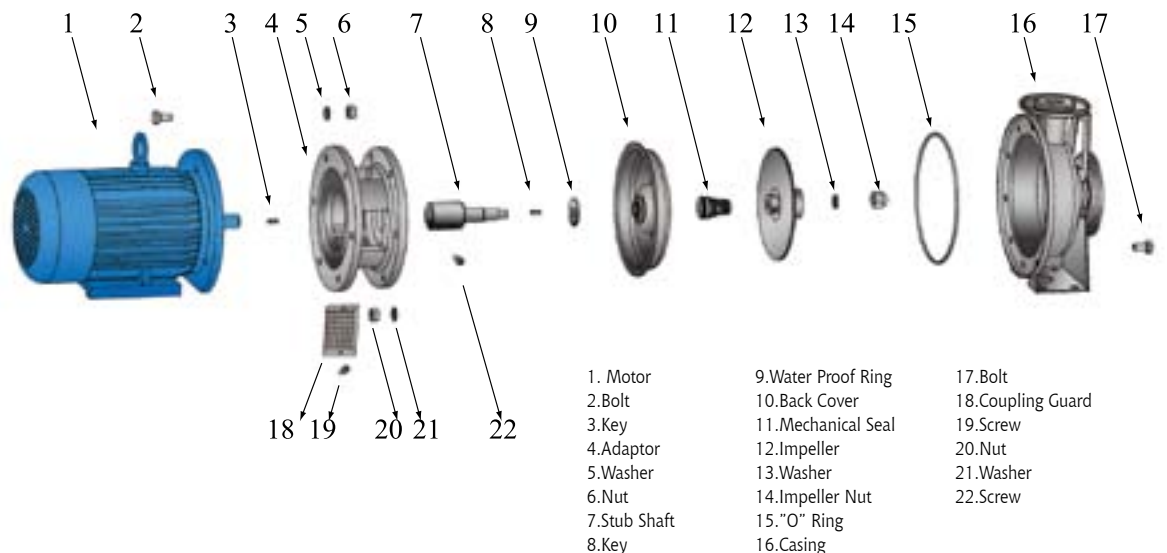
ASG Close Coupled Single Stage Pumps – SS304 (Option SS316)

Series ASG Close Coupled Pumps are designed in accordance with ISO 2858 / DIN 24256 standards. The suction and discharge flanges conform to GB9119-88 standards. All wetted parts including the volute casing, shaft and impeller are made of stamped stainless steel.

ASG

2900rpm

Cat.	HP/KW	Motor (V)	Q (Flow Rate)																	
			ℓ/min	50.1	100.2	150.3	200.4	250.5	300.6	334	400.8	451	507	551	601	651	701	802	1002	1202
			m ³ /hr	3.0	6.0	9.0	12	15	18	20	24	27	30	33	36	39	42	48	60	72
ASG50-32-125 /2.2	3.0/2.2	230/400T	21	20.5	20	19	17.5	16.5	15	11										
ASG50-32-160 /2.2	3.0/2.2	230/400T	26	25.5	25	24	23.5	21.5	20	18										
ASG50-32-160 /3.0	4.0/3.0	230/400T	35	34	33	32	31	30	29	27										
ASG50-32-200 /4.0	5.5/4.0	230/400T	40.5	40	38.5	37.5	36	34	33	30										
ASG50-32-200 /5.5	7.5/5.5	230/400T	50	49.5	49	48.5	48	47.5	47	44.5										
ASG65-50-125 /2.2	3.0/2.2	230/400T					15.5	15	14.5	14	13	12	11	10	8	6				
ASG65-50-125 /3.0	4.0/3.0	230/400T					21.8	21.5	21.3	21.1	20.7	20.2	19.5	18.4	16	14.5	12.5			
ASG65-50-160 /4.0	5.5/4.0	230/400T					28.5	28	27.4	27.1	26.3	25.4	24.3	22.9	21.7	20.5	19			
ASG65-50-160 /5.5	7.5/5.5	230/400T					36	35	34.5	33.8	33	32	31.5	31	30.5	29.8	29			
ASG65-40-200 /7.5	10/7.5	230/400T					44.5	43.5	42.5	42	41.8	41	40	38.5	37	35	33			
ASG65-40-200 /9.2	12.5/9.2	230/400T					53.5	52.8	52	51.5	51	50.5	50	49.5	49	47	45.5			
ASG80-65-125 /4.0	5.5/4.0	230/400T									21.6	21.2	20.5	20	19.2	18.2	17.5	15.5	11	8
ASG80-65-125 /5.5	7.5/5.5	230/400T									25.6	25.4	24.9	24.5	23.8	23.3	22.6	21	19	14
ASG80-65-160 /7.5	10/7.5	230/400T									30	29.8	29.5	28.8	28	27	26.5	24.8	23	19
ASG80-65-160 /9.2	12.5/9.2	230/400T									37	36.5	36	35.3	34.5	34	33.8	32	30	27.5
ASG80-50-200 /11	15/11	230/400T									52	51	50	49.5	49	48.5	48	46	41	33
ASG80-50-200 /15	20/15	230/400T									55	54.8	54.5	54.3	54	53.5	53	51	46.8	40



ASG Close Coupled Single Stage Pumps – SS304 (Option SS316)

Applications

- Water supply
- Pressure boosting
- Washing Machine
- Light Chemical Industry
- Food Processing
- Water Treatment
- Reverse Osmosis

Operating Conditions

- Flow: max 72 M3/hr
- Head: max 50 M
- Liquid Temp: -20°C to 110°C
- Operating Pressure: max 10bar

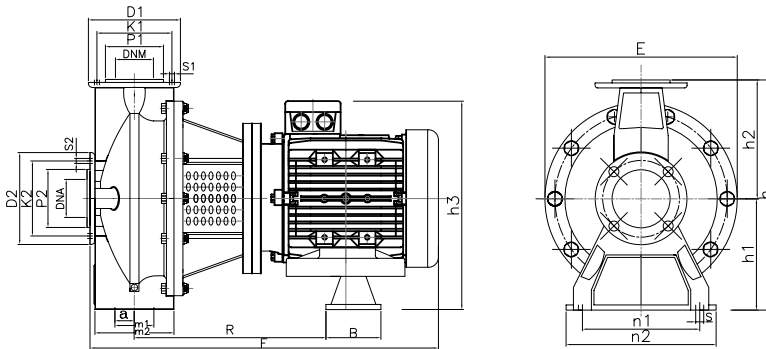
Mechanical Seal

- Materials
- NBR/Ceramic/Carbon (Standard)
- Viton/ Ceramic/Carbon
- Silicon Carbide/Ceramic/Carbon

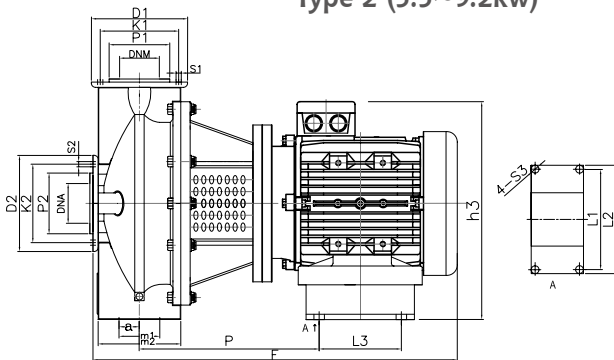


Dimensions

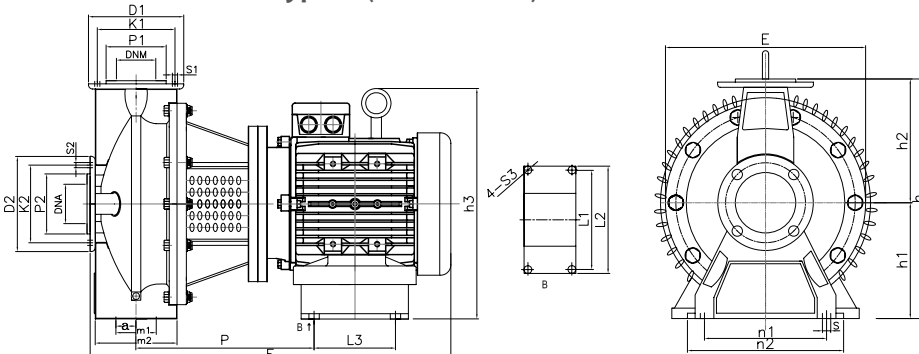
Type 1 (2.2~4.0kw)



Type 2 (5.5~9.2kw)



Type 3 (11.0~15.0kw)




ASG Close Coupled Single Stage Pumps – SS304 (Option SS316)

Series ASG Close Coupled Pumps are designed in accordance with ISO 2858 / DIN 24256 standards. The suction and discharge flanges conform to GB9119-88 standards. All wetted parts including the volute casing, shaft and impeller are made of stamped stainless steel.

Cat.	∅ E	F±2	h	h1	h2	h3	a	m1	m2	n1	n2	S
ASG50-32-125 /2.2	244	492	292	132	160	260	80	70	118	190	240	15
ASG50-32-160 /2.2	244	492	292	132	160	260	80	70	118	190	240	15
ASG50-32-160 /3.0	244	519	292	132	160	260	80	70	118	190	240	15
ASG50-32-200 /4.0	295	524	340	160	180	260	80	70	118	190	240	15
ASG50-32-200 /5.5	295	572	340	160	180	330	80	70	118	190	240	15
ASG65-50-125 /2.2	244	489	292	132	160	260	80	70	118	190	240	15
ASG65-50-125 /3.0	244	516	292	132	160	260	80	70	118	190	240	15
ASG65-50-160 /4.0	244	524	292	132	160	260	80	70	118	190	240	15
ASG65-50-160 /5.5	244	572	292	132	180	330	80	70	118	190	240	15
ASG65-40-200 /7.5	295	592	340	160	180	330	100	70	136	212	265	15
ASG65-40-200 /9.2	295	630	340	160	180	330	100	70	136	212	265	15
ASG80-65-125 /4.0	244	549	340	160	180	260	100	70	142	212	265	15
ASG80-65-125 /5.5	244	602	340	160	180	330	100	70	142	212	265	15
ASG80-65-160 /7.5	244	602	340	160	180	330	100	70	142	212	265	15
ASG80-65-160 /9.2	244	640	340	160	180	330	100	70	142	212	265	15
ASG80-50-200 /11	295	696	360	160	200	385	100	70	140	212	265	15
ASG80-50-200 /15	295	696	360	160	200	385	100	70	140	212	265	15

B	R	P	L1	L2	L3	L4	S3	D2	K2	P2	S2	D1	K1	P1	S1	DNA	DNM	Wt. (kg)
42	223	/	/	/	/	/	/	165	125	99	18	140	100	76	18	50	32	29.8
42	223	/	/	/	/	/	/	165	125	99	18	140	100	76	18	50	32	30
38	241	/	/	/	/	/	/	165	125	99	18	140	100	76	18	50	32	38.5
48	233	/	/	/	/	/	/	165	125	99	18	140	100	76	18	50	32	43.8
/	/	202	216	248	140	/	14	165	125	99	18	140	100	76	18	50	32	64.8
42	220	/	/	/	/	/	/	185	145	118	18	165	125	99	18	65	50	30.4
38	238	/	/	/	/	/	/	185	145	118	18	165	125	99	18	65	50	38.8
48	233	/	/	/	/	/	/	185	145	118	18	165	125	99	18	65	50	64.8
/	/	202	216	248	140	/	14	185	145	118	18	165	125	99	18	65	50	42
/	/	202	216	248	140	/	14	185	145	118	18	150	110	84	18	65	40	63
/	/	202	216	248	140	/	14	185	145	118	18	150	110	84	18	65	40	71.2
48	243	/	/	/	/	/	/	200	160	132	18	185	145	118	18	80	65	43.8
/	/	202	216	248	140	/	14	200	160	132	18	185	145	118	18	80	65	64.8
/	/	202	216	248	140	/	14	200	160	132	18	185	145	118	18	80	65	71.2
/	/	202	216	248	140	/	14	200	160	132	18	185	145	118	18	80	65	76.7
/	/	215.5	254	330	210	265	15	200	160	132	18	165	125	99	18	80	50	135
/	/	215.5	254	330	210	265	15	200	160	132	18	165	125	99	18	80	50	146



SPS Deep Well Submersible Pumps 4" & 6" - SS304

Series SPS pumps have stamped stainless steel chambers and impellers. These pumps suit bore hole diameters for 4" and 6" and for water temperature of up to 35 degrees C and these pumps have built in check valves.

4" SPS Pump

2900rpm

Cat.	Motor HP/KW	Disch. Inch	Total Head M	Q (Flow Rate)						Pump		Motor	
				ℓ/min	10	12	15	17	20	L	Wt.	L	Wt.
				m ³ /hr	0.6	0.7	0.9	1	1.2	mm	kg	mm	kg
SPS-0109	0.5/0.37	1 1/4	50	H (m)	44	42	36	32	26	354	3.1	330	8
SPS-0114	0.5/0.37		77		67	63	57	50	39	459	4	330	8
SPS-0118	0.75/0.55		100		87	83	73	67	50	543	4.7	335	9.5
SPS-0121	0.75/0.55		116		100	96	83	76	58	606	5.2	335	9.5
SPS-0128	1.0/0.75		155		135	127	110	101	78	753	6.6	335	11
SPS-0136	1.5/1.1		189		157	148	127	117	90	946	8.6	355	11.5
SPS-0142	1.5/1.1		219		180	170	146	133	102	1072	9.8	355	11.5
SPS-0150	2.0/1.5		262		218	203	177	163	124	1240	11.3	385	12.5

Cat.	Motor HP/KW	Disch. Inch	Total Head M	Q (Flow Rate)						Pump		Motor	
				ℓ/min	20	25	30	35	40	L	Wt.	L	Wt.
				m ³ /hr	1.2	1.5	1.8	2.1	2.4	mm	kg	mm	kg
SPS-0209	0.5/0.37	1 1/4	50	H (m)	43	40	37	30	23	354	3.2	330	8
SPS-0213	0.75/0.55		72		63	59	53	43	35	438	4	335	9.5
SPS-0218	1/0.75		101		90	82	73	60	45	543	5.1	335	11
SPS-0223	1.5/1.1		129		116	105	96	70	60	648	6.2	335	11.5
SPS-0228	2.0/1.5		158		141	130	117	98	76	753	7	385	12.5
SPS-0233	2.0/1.5		186		163	150	133	113	87	858	8.1	385	12.5
SPS-0240	3.0/2.2		233		204	187	164	138	35	1041	10.4	425	14
SPS-0248	3.0/2.2		178		250	220	197	162	120	1209	12.1	425	14

Cat.	Motor HP/KW	Disch. Inch	Total Head M	Q (Flow Rate)						Pump		Motor	
				ℓ/min	36	40	44	48	52	L	Wt.	L	Wt.
				m ³ /hr	2.2	2.4	2.6	2.9	3.1	mm	kg	mm	kg
SPS-0306	0.5/0.37	1 1/4	36	H (m)	30	29	27	26	24	291	2.6	330	8
SPS-0309	0.75/0.55		54		43	41	40	39	37	354	3.1	335	9.5
SPS-0312	1.0/0.75		72		60	58	53	50	47	417	3.7	335	11
SPS-0318	1.5/1.1		108		87	84	81	78	73	543	4.9	335	11.5
SPS-0325	2.0/1.5		149		103	118	110	103	98	690	6.3	385	12.5
SPS-0333	3.0/2.2		198		163	158	150	140	133	858	7.9	425	14
SPS-0345	5.0/3.7		268		224	218	207	199	187	1146	10.8	590	21
SPS-0352	5.5/4.0		312		263	253	243	236	221	1293	12.5	590	23

Cat.	Motor HP/KW	Disch. Inch	Total Head M	Q (Flow Rate)						Pump		Motor	
				ℓ/min	60	65	70	75	80	L	Wt.	L	Wt.
				m ³ /hr	3.6	3.9	4.2	4.5	4.8	mm	kg	mm	kg
SPS-0504	0.5/0.37	1 1/2	24	H (m)	19	18	17	16	15	249	2.2	330	8
SPS-0506	0.75/0.55		37		29	27	25	23	21	291	2.3	335	9.5
SPS-0508	1.0/0.75		48		39	37	35	33	32	333	2.9	335	11
SPS-0512	1.5/1.1		73		57	55	53	50	47	419	3.7	335	11.5
SPS-0517	2.0/1.5		104		80	77	73	70	67	522	4.7	385	12.5
SPS-0525	3.0/2.2		152		118	113	110	103	99	690	6.4	425	14
SPS-0533	5.0/3.7		200		156	150	141	136	129	858	7.8	590	21
SPS-0538	5.5/4.0		238		183	177	170	161	156	999	9.7	590	23
SPS-0544	5.5/4.0		267		201	193	187	180	173	1125	11	590	23
SPS-0552	7.5/5.5		317		244	237	227	217	207	1293	13	590	21

Cat.	Motor	Disch.	Total Head	Q (Flow Rate)					Pump		Motor		
				ℓ/min	95	110	125	140	155	L	Wt.	L	Wt.
				m ³ /hr	5.7	6.6	7.5	8.4	9.3	mm	kg	mm	kg
SPS-0805	1.0/0.75	2	29	H (m)	22.3	21.1	19.4	17.4	15.0	411	4.5	355	11
SPS-0807	1.5/1.1		40		29.5	29.3	26.2	23.1	19.7	495	5.4	355	11.5
SPS-0810	2.0/1.5		57		46.3	42.3	41.1	35.2	29.3	621	6.9	385	12.5
SPS-0815	3.0/2.2		86		67.2	65.3	62.3	51.7	43.5	831	9.4	425	14
SPS-0818	5.0/3.7		103		80.4	79.7	73.5	66.4	56.8	957	11.1	590	23
SPS-0825	7.5/3.7		143		115.6	111.5	95.9	89.1	80.4	1251	14.2	590	21
SPS-0837	7.5/5.5		210		167.1	156.8	151.7	128.5	116.8	1755	20.2	590	21
SPS-0844	10/5.5		251		205	193	177	160	142	2049	23.7	810	27

Cat.	Motor	Disch.	Total Head	Q (Flow Rate)					Pump		Motor		
				ℓ/min	160	180	200	220	240	L	Wt.	L	Wt.
				m ³ /hr	9.6	10.8	12	13.2	14.4	mm	kg	mm	kg
SPS-1405	2.0/1.5	2	31	H (m)	27	25.7	24.5	22.4	20.4	503	4.9	385	12.5
SPS-1407	3.0/2.2		44		37.4	36.3	33.4	30.7	27.3	633	5.9	425	14
SPS-1410	5.0/3.7		63		54.8	52.5	48.1	43.2	39.4	828	7.4	590	23
SPS-1413	7.5/5.5		82		70	67.4	63.5	59.8	56	1023	8.9	590	21
SPS-1418	7.5/5.5		113		98	94	89	84	78	1348	11.4	590	21
SPS-1425	10/7.5		156		134	128	122	114	106	1803	14.9	810	27


SPS Applications

- Irrigation
- High Rise Building Boosting
- Water Treatment
- Reverse Osmosis
- High Pressure Cleaning

6" SPS Pump

2900rpm

Cat.	Motor HP/KW	Disch Inch	Total Head M	Q (Flow Rate)						Pump		Motor	
				ℓ/min	220	240	260	280	300	L	Wt.	L	Wt.
				m ³ /hr	13.2	14.4	15.6	16.8	18	mm	kg	mm	kg
SPS-1701	0.75/0.55	2 1/2	11	H (m)	7	7	7	7	7	317	4.6		
SPS-1704	3.0/2.2		43		37	37	34	33	30	497	8.5	425	14
SPS-1705	5.0/3.7		53		45	43	41	39	37	557	9.8	590	21
SPS-1710	7.5/5.5		106		89	83	80	77	73	857	16.1	590	21
SPS-1713	10/7.5		138		118	113	103	100	93	1052	20.3	810	27
SPS-1717	12/9.2		180		154	144	139	130	120	1292	25.4	711	56
SPS-1720	15/11		212		179	170	160	153	140	1472	29.2	711	58
SPS-1724	20/15		255		217	205	197	182	168	1712	34.3	776	64
SPS-1727	20/15		286		243	235	220	207	193	1892	38.2	776	64

Cat.	Motor HP/KW	Disch Inch	Total Head M	Q (Flow Rate)					Pump		Motor		
				ℓ/min	300	350	400	450	500	L	Wt.	L	Wt.
				m ³ /hr	18	21	24	27	30	mm	kg	mm	kg
SPS-3001	1.5/1.1	3	11	H (m)	9	9	9	9	9	353	4.8		
SPS-3002	3.0/2.2		23		18	17	17	16	15	449	6.5	425	14
SPS-3003	5.0/3.7		32		29	28	26	24	21	545	8.2	590	21
SPS-3006	7.5/5.5		65		56	54	50	46	43	848	13.8	590	21
SPS-3008	10/7.5		87		74	71	66	61	57	1040	17.3	810	27
SPS-3013	15/11		141		121	116	109	101	92	1520	26.1	711	58
SPS-3015	20/15		163		140	133	125	117	106	1712	29.6	776	64
SPS-3017	20/15		183		159	151	143	134	122	1904	33.2	776	64
SPS-3021	25/18.5		228		197	189	177	165	151	2288	40.2	841	70

Cat.	Motor HP/KW	Disch Inch	Total Head M	Q (Flow Rate)					Pump		Motor		
				ℓ/min	550	600	650	700	750	L	Wt.	L	Wt.
				m ³ /hr	33	36	39	42	45	mm	kg	mm	kg
SPS-4601	3.0/2.2	4	13	H (m)	9	9	9	9	9	391	6.3	425	14
SPS-4602	5.0/3.7		25		19	18	17	16	15	504	8.5	590	21
SPS-4603	7.5/5.5		40		29	28	27	26	24	617	10.7	590	21
SPS-4605	10/7.5		64		49	47	45	43	41	858	15.2	810	27
SPS-4607	15/11		89		72	68	64	60	57	1084	19.7	711	58
SPS-4610	20/15		128		99	96	91	87	81	1423	26.5	776	64
SPS-4612	25/18.5		154		120	116	110	105	100	1649	31	841	70
SPS-4615	30/22		193		151	145	139	132	124	1988	37.8	906	76
SPS-4617	35/26		219		172	166	160	150	143	2214	42.3	1036	88

Cat.	Motor HP/KW	Disch Inch	Total Head M	Q (Flow Rate)					Pump		Motor		
				ℓ/min	600	700	800	900	1000	L	Wt.	L	Wt.
				m ³ /hr	36	42	48	54	60	mm	kg	mm	kg
SPS-6001	3.0/2.2	4	12	H (m)	9	9	9	9	9	391	6.4	425	14
SPS-6002	5.5/4.0		27		20	18	16	15	14	504	8.7	590	23
SPS-6003	7.5/5.5		40		30	28	26	23	21	617	11	590	21
SPS-6004	10/7.5		53		42	38	34	31	27	745	13.2	810	27
SPS-6006	15/11		81		66	61	56	51	46	971	17.8	711	58
SPS-6008	20/15		108		84	78	72	66	57	1197	22.3	776	64
SPS-6010	25/18.5		136		106	99	90	82	73	1423	26.9	841	70
SPS-6012	30/22		162		129	119	108	99	87	1649	31.4	906	76
SPS-6015	35/26		203		157	147	135	122	108	1988	38.2	1036	88

SPS-H Small Flow, High Pressure Submersible Pump 4" - SS304

SPS-H is specially designed for high pressure applications. Two submersible pumps are integrated in series to increase the pump discharge pressure.

4" SPS-H Pump

2900rpm



Cat.	Motor	Disch	Total Head	Q (Flow Rate)						Pump		Motor	
				ℓ/min	12	14	16	18	20	L	Wt.	L	Wt.
	HP/KW	Inch	M	m ³ /hr	0.72	0.84	0.96	1.08	1.2	mm	kg	mm	kg
SPS-H-0155	2.0/1.5	1 1/4	273	H (m)	210	190	173	150	127	1484	15	385	12.5
SPS-H-0160	3.0/2.2		296		230	212	192	169	142	1589	16	425	14
SPS-H-0165	5.0/3.7		320		245	222	200	175	148	1694	17.1	590	21
SPS-H-0170	5.0/3.7		344		265	240	217	190	160	1799	18.3	590	21

Cat.	Motor	Disch	Total Head	Q (Flow Rate)						Pump		Motor	
				ℓ/min	20	24	28	32	36	L	Wt.	L	Wt.
	HP/KW	Inch	M	m ³ /hr	1.2	1.44	1.68	1.92	2.16	mm	kg	mm	kg
SPS-H-0255	5.0/3.7	1 1/4	298	H (m)	272	253	230	202	170	1484	15	590	21
SPS-H-0260	5.0/3.7		326		294	273	248	217	182	1589	16	590	21
SPS-H-0265	5.0/3.7		358		318	295	269	235	199	1694	17.1	590	21
SPS-H-0270	5.5/4.0		379		342	319	290	255	215	1799	18.3	590	23

Cat.	Motor	Disch	Total Head	Q (Flow Rate)						Pump		Motor	
				ℓ/min	35	40	45	50	55	L	Wt.	L	Wt.
	HP/KW	Inch	M	m ³ /hr	2.1	2.4	2.7	3	3.3	mm	kg	mm	kg
SPS-H-0355	5.5/4.0	1 1/4	314	H (m)	280	265	250	235	212	1484	15	590	23
SPS-H-0360	5.5/4.0		340		297	281	265	245	225	1589	16	590	23
SPS-H-0365	7.5/5.5		369		320	302	285	265	240	1694	17.7	590	21
SPS-H-0370	10/7.5		395		340	324	304	280	255	1799	18.3	810	27

Cat.	Motor	Disch	Total Head	Q (Flow Rate)						Pump		Motor	
				ℓ/min	60	65	70	75	80	L	Wt.	L	Wt.
	HP/KW	Inch	M	m ³ /hr	3.6	3.9	4.2	4.5	4.8	mm	kg	mm	kg
SPS-H-0555	7.5/5.5	1 1/2	325	H (m)	259	250	235	225	210	1484	15	590	21
SPS-H-0560	7.5/5.5		348		279	265	255	240	225	1589	16	590	21
SPS-H-0565	10/7.5		376		307	293	280	262	245	1694	17.1	810	27
SPS-H-0570	10/7.5		404		323	310	293	277	260	1799	18.3	810	27



Ebara Submersible Motor

ZBH4N/K is intended to be used directly connected to the submersible pump for deep well applications. The motor is full SS304 material and is a water cooled unit.

Winding	B class with Epoxy Coating
Protection	IP68
Max Waer Temperature	35°C
No of Starting/hr	Max 30
Allowable voltage Variation	+6% / -10%
Max Depth immersion	250 Meter
Mounting	Vertical / Horizontal
Starting method	2 Wired / 3Wired
Cable Length	3 Meter

Phase	Volt V	Freq H z	Thrust Type	Thrust Load N	Output kw	Amp A	EFF %	PF %	Speed min-1	C Run	C Start			
1 (3WIRE)	220	50	Low	1500	0.37	3.9	62	72	2880	-	48			
					0.55	6.4	62	72	2870	-	65			
			Middle	3000	0.75	8.0	63	75	2870	-	95			
					1.1	10.0	66	80	2880	10	115			
					1.5	12.1	66	82	2870	10	160			
					2.2	17.0	70	88	2880	35	300			
			High	6500	2.2	17.0	70	88	2880	35	300			
			1 (PSC)	220	50	Low	1500	0.37	3.5	57	93	2850	-	16
								0.55	4.6	62	90	2840	-	20
						Middle	3000	0.75	5.8	64	94	2840	-	30
1.1	8.6	66						95	2830	-	40			
1.5	11.0	67						96	2830	-	50			
2.2	14.9	69						98	2830	-	70			
High	6500	2.2				14.9	69	98	2830	-	70			
3	220	50				Low	1500	0.37	2.1	64	74	2830	-	-
								0.55	2.9	67	75	2840	-	-
						Middle	3000	0.75	3.9	68	79	2830	-	-
			1.1	5.4	72			79	2830	-	-			
			1.5	7.2	72			80	2830	-	-			
			2.2	9.7	74			80	2830	-	-			
			Hi-Middle	4500	2.2	9.7	74	80	2830	-	-			
					3.7	16.6	75	80	2830	-	-			
			High	6500	5.5	23.9	77	81	2840	-	-			
					2.2	9.7	74	80	2830	-	-			
			380	50	Low	1500	0.37	1.2	64	74	2830	-	-	
							0.55	1.7	67	75	2840	-	-	
	Middle	3000			0.75	2.3	68	79	2830	-	-			
					1.1	3.1	72	79	2830	-	-			
	Hi-Middle	4500			1.5	4.2	72	80	2830	-	-			
					2.2	5.6	74	80	2830	-	-			
	High	6500	2.2	5.6	74	80	2830	-	-					
						3.7	9.6	75	80	2830	-	-		
					5.5	13.8	77	81	2840	-	-			

SPP Deep Well Submersible Pump 4" – Composite

- Series SPP Pumps are precise, engineered, corrosion resistant composite submersible pumps in deep well applications. The impeller is of a design that allows suspended solids to easily pass through the impeller without causing damage to the impeller. The pump can be operated in aggressive clean water that doesn't contains fibres etc. Suction and discharge outlets are made from 304 stainless steel with the impeller and chamber made from resin impregnated thermoplastic. The pump sleeve is made of stainless steel with the materials being used, providing high performance pumps.



4" SPP Pump

2900rpm

Cat.	Motor	Q (Flow Rate)										Pump		Motor	
		ℓ/min	5	10	15	20	25	30	35	37	L	Wt.	L	Wt.	
		m³/h	0.3	0.6	0.9	1.2	1.5	1.8	2.1	2.22	(mm)	(kg)	(mm)	(kg)	
SPP 1010	0.5/0.37	H (m)	68	62	52	41	30	18	12	5	388	3.430	255	6.5	
SPP 1015	0.75/0.55		111	104	91	78	60	40	22	13	500	4.395	255	7.1	
SPP 1020	1.0/0.75		140	128	111	94	70	44	23	13	612	5.360	295	9.5	
SPP 1030	1.5/1.1		211	190	163	137	100	59	30	13	871	7.536	295	11	
SPP 1040	2.0/1.5		284	252	216	173	127	80	40	15	1095	9.466	335	15	

Cat.	Motor	Q (Flow Rate)												Pump		Motor	
		ℓ/min	5	10	15	20	25	30	35	40	45	50	57	L	Wt.	L	Wt.
		m³/h	0.3	0.6	0.9	1.2	1.5	1.8	2.1	2.4	2.7	3.0	3.42	(mm)	(kg)	(mm)	(kg)
SPP 2006	0.5/0.37	H (m)	50	48	45	42	38	34	29	24	19	13	8	293	2.688	255	6.5
SPP 2009	0.75/0.55		78	73	69	65	60	54	47	40	33	23	16	360	3.282	255	7.1
SPP 2012	1.0/0.75		101	96	90	84	77	70	60	51	41	30	18	428	3.876	295	9.5
SPP 2017	1.5/1.1		143	135	127	119	108	97	85	71	53	37	20	540	4.866	295	11
SPP 2022	2.0/1.5		187	177	166	155	141	127	111	93	73	51	27	652	5.856	335	15
SPP 2030	3.0/2.2		255	243	228	214	193	174	153	129	102	75	45	866	7.686	360	17
SPP 2040	4.0/3.0		340	325	306	283	258	235	209	171	132	88	43	1090	9.666	380	25

Cat.	Motor	Q (Flow Rate)													Pump		Motor	
		ℓ/min	5	10	15	20	25	30	35	40	45	50	60	65	L	Wt.	L	Wt.
		m³/h	0.3	0.6	0.9	1.2	1.5	1.8	2.1	2.4	2.7	3.0	3.6	3.9	(mm)	(kg)	(mm)	(kg)
SPP 2606	0.5/0.37	H (m)	53	51	48	46	43	40	35	31	27	22	17	6	298	2.691	255	6.5
SPP 2608	0.75/0.55		74	70	67	64	60	55	50	45	38	32	26	12	342	3.102	255	7.1
SPP 2610	1.0/0.75		89	85	82	77	72	68	62	55	48	41	33	16	386	3.513	295	9.5
SPP 2615	1.5/1.1		134	129	123	116	110	101	92	82	70	60	47	23	497	4.546	295	11
SPP 2620	2.0/1.5		178	170	162	152	142	131	120	108	93	79	62	27	608	5.579	335	15
SPP 2630	3.0/2.2		266	252	239	225	211	192	173	155	132	110	87	35	869	7.812	360	17
SPP 2635	4.0/3.0		317	303	290	274	254	235	215	193	168	145	115	54	977	8.975	380	25


SPP
Applications

- Deep Well Water Supply
- Commercial building
- Residential
- Houses

Working Conditions

- SPP
- FlowL 20 m³/hr
- HeadL 280 M
- Liquid Temperature up to 30°C

4" SPP Pump

Cat.	Motor HP/KW	Q (Flow Rate)											Pump		Motor	
		ℓ/min	25	30	35	40	45	50	60	70	80	90	L	Wt.	L	Wt.
		m ³ /h	1.5	1.8	2.1	2.4	2.7	3.0	3.6	4.2	4.8	5.4	(mm)	(kg)	(mm)	(kg)
SPP3006	0.5/0.37	H (m)	50	41	39	37	35	32	29	22	15	7	316	2.807	255	6.5
SPP3008	0.75/0.55		69	57	55	52	48	45	40	30	21	11	366	3.257	255	7.1
SPP3009	1/0.75		78	63	60	57	53	49	44	34	23	11	391	3.482	295	9.5
SPP3013	1.5/1.1		112	92	88	84	80	74	67	52	35	18	492	4.387	295	11
SPP3017	2.0/1.5		146	120	113	107	102	94	86	67	45	23	593	5.292	335	15
SPP3026	3.0/2.2		221	178	169	159	150	140	123	94	62	25	820	7.326	360	17
SPP3031	4.0/3.0		270	221	210	200	187	176	160	123	82	40	981	8.749	380	25
SPP3037	5.0/3.7		317	259	245	230	215	200	182	140	92	40	1132	10.104	400	30
SPP3041	5.5/4.0		364	295	280	262	248	230	212	160	108	40	1236	11.383	400	30

Cat.	Motor HP/KW	Q (Flow Rate)													Pump		Motor	
		ℓ/min	20	25	30	35	40	45	50	60	70	80	90	95	L	Wt.	L	Wt.
		m ³ /h	1.2	1.5	1.8	2.1	2.4	2.7	3.0	3.6	4.2	4.8	5.4	5.7	(mm)	(kg)	(mm)	(kg)
SPP 3605	0.5/0.37	H (m)	43	37	36	35	32	30	28	26	20	15	9	3	290	2.577	255	6.5
SPP 3607	0.75/0.55		60	53	51	48	47	44	41	38	31	23	16	7	341	3.032	255	7.1
SPP 3608	1/0.75		67	59	57	55	53	51	48	44	36	27	18	7	367	3.257	295	9.5
SPP 3613	1.5/1.1		114	98	95	92	87	82	76	69	55	40	23	8	492	4.378	295	11
SPP 3617	2.0/1.5		149	128	125	120	116	108	100	92	75	53	33	11	593	5.292	335	15
SPP 3625	3.0/2.2		217	186	180	173	167	155	145	133	105	76	47	16	794	7.097	360	17
SPP 3630	4.0/3.0		265	230	222	213	205	192	179	166	133	100	61	27	956	8.524	380	25
SPP 3636	5.0/3.7		313	267	256	247	236	222	205	189	151	112	66	27	1107	9.879	400	30
SPP 3640	5.5/4.0		358	312	302	290	280	261	246	226	188	142	90	37	1210	11.153	400	30

Cat.	Motor HP/KW	Q (Flow Rate)												Pump		Motor	
		ℓ/min	30	35	40	45	50	60	70	80	90	100	103	L	Wt.	L	Wt.
		m ³ /h	1.8	2.1	2.4	2.7	3.0	3.6	4.2	4.8	5.4	6.0	6.18	(mm)	(kg)	(mm)	(kg)
SPP 5006	0.5/0.37	H (m)	44	39	38	36	35	33	28	23	17	12	4	325	2.6	255	6.5
SPP 5009	1.0/0.75		66	57	55	53	51	48	42	33	24	16	5	405	3.6	255	7.1
SPP 5012	1.5/1.1		88	77	75	71	68	65	55	45	33	21	6	490	4.3	295	9.5
SPP 5015	2.0/1.5		112	98	96	94	89	85	73	60	45	30	10	573	4.9	295	11
SPP 5022	3.0/2.2		162	143	139	135	128	121	107	86	64	40	12	880	7.5	335	15
SPP 5030	4.0/3.0		222	195	190	186	182	171	148	120	90	58	24	1020	8.7	360	17
SPP 5038	5.0/3.7		275	238	231	222	212	204	172	140	101	62	26	1254	11	380	25
SPP 5040	5.5/4.0		300	262	255	247	239	230	200	162	121	80	30	1300	11.5	400	30

SPP Deep Well Submersible Pump 4" – Composite

Series SPP Pumps are precise, engineered, corrosion resistant composite submersible pumps in deep well applications. The impeller is of a design that allows suspended solids to easily pass through the impeller without causing damage to the impeller. The pump can be operated in aggressive clean water that doesn't contains fibres etc. Suction and discharge outlets are made from 304 stainless steel with the impeller and chamber made from resin impregnated thermoplastic. The pump sleeve is made of stainless steel with the materials being used, providing high performance pumps.



4" SPP Pump

2900rpm

Cat.	Motor HP/KW	Q (Flow Rate)										Pump		Motor	
		ℓ/min	50	60	70	80	90	100	120	140	150	L	Wt.	L	Wt.
		m³/h	3.0	3.6	4.2	4.8	5.4	6.0	7.2	8.4	9.0	(mm)	(kg)	(mm)	(kg)
SPP 7006	1.0/0.75	H (m)	44	40	39	38	35	32	28	20	10	380	3.3	295	9.5
SPP 7009	1.5/1.1		64	57	56	53	52	47	40	28	13	490	4	295	11
SPP 7013	2.0/1.5		91	82	79	77	72	66	57	38	16	636	5.5	335	15
SPP 7018	3.0/2.2		125	116	107	100	92	82	70	43	17	850	7	360	17
SPP 7023	4.0/3.0		159	142	138	134	124	112	99	68	28	1032	8.6	380	25
SPP 7030	5.0/3.7		202	180	172	165	155	139	120	77	24	1292	11	400	30

Cat.	Motor HP/KW	Q (Flow Rate)												Pump		Motor		
		ℓ/min	50	60	70	80	90	100	120	140	160	180	200	210	L	Wt.	L	Wt.
		m³/h	3.0	3.6	4.2	4.8	5.4	6.0	7.2	8.4	9.6	10.8	12	12.6	(mm)	(kg)	(mm)	(kg)
SPP 8005	1.0/0.75	H (m)	35	31	30	29	28	27	25	22	20	16	12	6	398	3.271	295	9.5
SPP 8007	1.5/1.1		46	40	39	37	36	35	33	30	26	21	13	5	492	3.997	295	11
SPP 8010	2.0/1.5		70	60	58	56	53	51	48	43	37	31	21	9	631	5.089	335	15
SPP 8014	3.0/2.2		97	83	81	78	74	70	67	59	51	42	28	12	817	6.542	360	17
SPP 8018	4.0/3.0		128	108	105	100	96	92	86	77	68	57	38	13	1039	8.293	380	25
SPP 8022	5.0/3.7		148	127	123	118	113	107	101	90	77	63	43	17	1125	9.365	400	30
SPP 8024	5.5/4.0		169	147	143	138	133	125	119	105	91	76	55	25	1321	10.846	400	30
SPP 8032	7.5/5.5		221	190	185	178	170	161	152	135	117	97	66	27	1694	13.757	475	42

Cat.	Motor HP/KW	Q (Flow Rate)														Pump		Motor	
		ℓ/min	70	80	90	100	120	140	160	180	200	220	240	260	274	L	Wt.	L	Wt.
		m³/h	4.2	4.8	5.4	6.0	7.2	8.4	9.6	10.8	12	13	12.4	16	16.4	(mm)	(kg)	(mm)	(kg)
SPP 11007	1.5/1.1	H (m)	45	40	39	38	36	33	29	26	23	20	15	10	5	511	4.128	295	11
SPP 11010	2.0/1.5		64	57	56	54	52	47	43	38	35	30	24	17	9	660	5.278	335	15
SPP 11014	3.0/2.2		90	78	76	73	70	64	57	52	47	40	30	20	10	858	6.809	360	17
SPP 11018	4.0/3.0		117	105	100	97	93	85	77	68	62	52	41	28	12	1091	8.632	380	25
SPP 11022	5.0/3.7		137	120	118	113	108	99	88	80	71	60	47	32	15	1292	10.537	400	30
SPP 11024	5.5/4.0		156	140	137	132	128	118	105	95	85	74	60	43	24	1391	11.302	400	30
SPP 11032	7.5/5.5		204	178	173	168	160	147	132	119	106	92	72	50	24	1787	14.363	475	42

• Note: Weight is not included submersible motor


SPP
Applications

- Deep Well Water Supply
- Commercial building
- Residential
- Houses

Working Conditions

- SPP
- FlowL 20 m³/hr
- HeadL 280 M
- Liquid Temperature up to 30°C

4" SPP Pump

2900rpm

Cat.	Motor	Q (Flow Rate)											Pump		Motor	
		l/min	100	120	140	160	180	200	220	240	260	309	L	Wt.	L	Wt.
		m ³ /h	6.0	7.2	8.4	9.6	10.8	12	13	12.4	16	18.5	(mm)	(kg)	(mm)	(kg)
SPP 12007	2.0/1.5		46	38	36	33	30	27	23	20	16	12	525	4.5	335	15
SPP 12010	3.0/2.2		65	54	52	47	43	38	33	28	23	17	683	6	360	17
SPP 12014	4.0/3.0	H (m)	91	78	74	69	62	56	50	43	35	26	930	8	380	25
SPP 12017	5.0/3.7		108	91	86	79	72	64	57	48	38	28	1090	9.5	400	30
SPP 12019	5.5/4.0		126	108	104	97	87	79	71	63	53	40	1190	10.5	400	30
SPP 12026	7.5/5.5		167	141	134	123	112	100	90	79	64	48	1560	14	475	42

Cat.	Motor	Q (Flow Rate)																Pump		Motor	
		l/min	140	160	180	200	220	240	260	280	300	320	340	360	380	400	435	L	Wt.	L	Wt.
		m ³ /h	8.4	9.6	10.8	12	13	14.4	16	17	18	19	20	22	23	24	26.1	(mm)	(kg)	(mm)	(kg)
SPP 16006	2.0/1.5	37	30	29	28	26	25	23	22	21	19	17	15	14	12	10	572	4.9	335	15	
SPP16008	3.0/2.2	50	41	40	38	36	34	32	31	28	26	24	21	19	17	14	709	5.8	360	17	
SPP16011	4.0/3.0	H (m)	68	57	55	53	51	48	45	42	40	37	33	30	27	23	20	915	7.5	380	25
SPP 16013	5.0/3.7		78	65	62	60	57	54	51	47	44	41	37	33	28	24	20	1009	8.7	400	30
SPP 16015	5.5/4.0		94	79	76	73	69	66	62	58	54	51	47	42	37	32	27	1232	9.5	400	30
SPP 16020	7.5/5.5		122	101	98	93	88	82	80	75	70	63	59	53	43	40	34	1575	12.5	475	42

SPC Deep Well Submersible Pumps 6" to 14" – SS304

Series SPC Pump has investment cast stainless steel for chamber and impeller. SPC are designed for high head applications. The chamber has better sand resistance giving extended life. The product is suited for head duty applications.

6" SPW Pump

2900rpm



Cat.	Motor HP/KW	Disch Inch	Q (Flow Rate)					Pump		Motor		
			ℓ/min	50	73.5	98.5	124	148	L	Wt.	L	Wt.
			m ³ /hr	3	4.4	5.9	7.4	8.9	mm	kg	mm	kg
SPW15-6	3.0/2.2	3	H (m)	78	73	65	54	40	504	13.6	320	18.5
SPW15-9	5.0/3.7			115	108	97	81	61	612	17.5	504	36
SPW15-13	7.5/5.5			165	154	139	117	89	756	22.7	583	38
SPW15-14	7.5/5.5			177	165	149	126	96	792	24	583	38
SPW15-17	10/7.5			213	198	179	152	117	900	27.9	653	46
SPW15-18	10/7.5			224	209	189	161	124	936	29.2	653	46
SPW15-26	15/11			316	292	267	230	182	1292	41	753	54
SPW15-27	15/11			327	302	276	239	190	1328	42.3	753	54
SPW15-34	20/15			403	375	341	298	242	1580	51.4	760	76.5
SPW15-35	20/15			413	385	350	306	250	1616	52.7	760	76.5

Cat.	Motor HP/KW	Disch Inch	Q (Flow Rate)					Pump		Motor		
			ℓ/min	83.5	126	173	212	250	L	Wt.	L	Wt.
			m ³ /hr	5	7.6	10.22	12.7	15.3	mm	kg	mm	kg
SPW20-3	3.0/2.2	3	H (m)	42	39	35	29	21	396	9.7	320	18.5
SPW20-5	5.0/3.7			69	65	58	48	35	468	12.3	504	36
SPW20-6	5.0/3.7			83	77	70	58	43	504	13.6	504	36
SPW20-9	7.5/5.5			123	115	104	87	65	612	17.5	583	38
SPW20-11	10/7.5			150	140	127	107	81	684	20.1	653	46
SPW20-12	10/7.5			163	153	138	117	89	720	21.4	653	46
SPW20-17	15/11			228	214	195	166	130	900	27.9	753	54
SPW20-18	15/11			241	226	206	176	138	936	29.2	753	54
SPW20-22	20/15			292	274	250	216	173	1148	35.8	760	76.5
SPW20-23	20/15			305	286	261	226	181	1184	37.1	760	76.5
SPW20-27	25/18.5			355	333	305	267	218	1328	42.3	800	79
SPW20-28	25/18.5			367	345	316	277	227	1364	43.6	800	79
SPW20-32	30/22			416	391	359	318	265	1508	48.8	830	81
SPW20-33	30/22	428	402	370	328	275	1544	50.1	830	81		

Cat.	Motor HP/KW	Disch Inch	Q (Flow Rate)					Pump		Motor		
			ℓ/min	130	192	257	317	384	L	Wt.	L	Wt.
			m ³ /hr	7.8	11.5	15.4	19	23	mm	kg	mm	kg
SPW36-3	3.0/2.2	3	H (m)	34	31	27	22	16	320	10	431	18.5
SPW36-5	5.0/3.7			56	51	45	36	26	504	12.8	526	36
SPW36-6	5.0/3.7			67	61	53	44	31	504	14.2	573	36
SPW36-8	7.5/5.5			89	81	71	58	42	583	17	668	38
SPW36-9	10/7.5			100	90	79	65	47	653	18.4	716	46
SPW36-10	10/7.5			111	100	88	72	52	653	19.8	763	46
SPW36-15	15/11			164	148	130	107	79	753	26.8	1001	54
SPW36-16	15/11			175	158	138	114	84	753	28.2	1048	54
SPW36-20	20/15			216	195	171	141	106	760	35.2	1306	76.5
SPW36-21	20/15			226	204	179	147	111	760	36.6	1354	76.5
SPW36-25	25/18.5			267	240	210	174	132	800	42.2	1544	79
SPW36-26	25/18.5			277	249	218	180	138	800	43.6	1591	79
SPW36-30	30/22			316	284	249	209	159	830	49.2	1781	81
SPW36-31	30/22			326	295	259	216	165	830	50.6	1829	81



SPC

Applications

- Deep Well Water Supply
- Irrigation
- Hot Springs
- De-watering
- Environmental
- Fountains
- Reverse Osmosis
- High Rise Building
- Sea Water - SS316L/Duplex SS

6" SPW Pump

2900rpm

Cat.	Motor HP/KW	Disch Inch	Q (Flow Rate)					Pump		Motor		
			ℓ/min	167	250	334	417.5	500	L	Wt.	L	Wt.
			m ³ /hr	10	15	20	25	30	mm	kg	mm	kg
SPW50-4	5.0/3.7	3	H (m)	45	40	35	28	20	478	11.4	504	36
SPW50-6	7.5/5.5			67	60	53	42	31	573	14.2	583	38
SPW50-7	10/7.5			78	70	62	49	36	621	15.6	653	46
SPW50-8	10/7.5			89	80	70	56	41	668	17	653	46
SPW50-12	15/11			132	119	106	85	63	858	22.6	753	54
SPW50-16	20/15			175	158	139	114	85	1048	28.2	760	76.5
SPW50-20	25/18.5			217	197	172	143	107	1306	35.2	800	79
SPW50-23	30/22			249	225	196	164	124	1449	39.4	830	81
SPW50-24	30/22			259	235	205	172	130	1496	40.8	830	81
SPW50-30	40/30			321	291	256	216	165	1849	51.2	955	129
SPW50-31	40/30			331	301	265	223	171	1897	51.6	955	129
SPW50-32	40/30			341	310	273	230	177	1944	54	955	129

Cat.	Motor HP/KW	Disch Inch	Q (Flow Rate)					Pump		Motor		
			ℓ/min	227	334	456	577	685	L	Wt.	L	Wt.
			m ³ /hr	13.6	20	27.3	34	41	mm	kg	mm	kg
SPW65-3	5.0/3.7	3	H (m)	35	32	28	22	16	459	10.9	504	36
SPW65-4.5	7.5/5.5			53	49	42	34	24	573	14.3	583	38
SPW65-6	10/7.5			71	65	56	45	32	630	16	653	46
SPW65-8	15/11			94	86	74	61	44	744	19.4	753	54
SPW65-9	15/11			106	97	83	68	50	801	21.1	753	54
SPW65-12	20/15			140	128	111	92	67	972	26.5	760	26.2
SPW65-14	25/18.5			163	149	130	107	79	1086	29.6	800	29.6
SPW65-15	25/18.2			174	159	139	115	85	1143	29.6	800	31.3
SPW65-17	30/22			197	180	157	131	98	1257	31.3	830	34.7
SPW65-18	30/22			208	190	167	139	104	1314	31.3	830	36.4
SPW65-23	40/30			264	241	213	179	137	1735	39.4	955	48.3
SPW65-24	40/30			275	251	222	187	144	1792	39.4	955	50

Cat.	Motor HP/KW	Disch Inch	Q (Flow Rate)					Pump		Motor		
			ℓ/min	300	451	601	752	919	L	Wt.	L	Wt.
			m ³ /hr	18	27	36	45	55	mm	kg	mm	kg
SPW 80-1.5	5.0/3.7	3	H (m)	24.89	23.10	20.44	16.89	12.45	453	11.2	504	36
SPW 80-2	7.5/5.5			32.85	30.53	27.11	22.56	16.88	508	13	583	38
SPW 80-3	10/7.5			48.78	45.39	40.45	33.91	25.76	618	16.6	653	46
SPW 80-4	15/11			64.39	59.97	53.65	45.31	34.92	725	20.2	753	54
SPW 80-5	15/11			79.66	74.28	66.70	56.75	44.38	838	23.8	753	54
SPW 80-6	20/15			94.61	88.33	79.60	68.24	54.12	948	27.4	760	76.5
SPW 80-6.5	20/15			101.96	95.25	86.00	74.00	59.10	1003	29.2	800	76.5
SPW 80-8	25/18.5			123.51	115.60	104.98	91.36	74.48	1168	34.6	800	79
SPW 80-9	30/22			137.47	128.82	117.45	102.98	85.09	1278	38.2	830	81
SPW 80-10	30/22			151.10	141.78	129.77	114.66	95.99	1388	41.8	830	81

SPC Deep Well Submersible Pumps 6" to 14" – SS304

Series SPC Pump has investment cast stainless steel for chamber and impeller. SPC are designed for high head applications. The chamber has better sand resistance giving extended life. The product is suited for head duty applications.



8" SPH Pump

2900rpm

Cat.	Motor HP/KW	Disch Inch	Q (Flow Rate)					Pump		Motor		
			ℓ/min	287	431	576	781	863	L	Wt.	L	Wt.
			m ³ /hr	17.2	25.8	34.5	43	51.7	mm	kg	mm	kg
SPH 72-2	7.5/5.5	4	H (m)	39	36	32	26	19	420	13.5	410	39.5
SPH 72-3	10/7.5			59	54	47	39	29	477	16.5	630	57
SPH 72-4	15/11			78	71	63	51	39	534	19.5	690	66
SPH 72-6	20/15			117	107	94	78	59	648	25.5	760	76.5
SPH 72-7	25/18.5			136	124	110	91	70	705	28.5	800	79
SPH 72-9	30/22			174	159	141	117	91	819	34.5	830	81
SPH 72-10	35/26			193	177	157	131	102	944	39.5	895	117
SPH 72-11	40/30			212	194	172	144	112	1001	42.5	955	129
SPH 72-12	40/30			231	211	188	158	123	1058	45.5	955	129
SPH 72-13	50/37			249	229	203	171	164	1115	48.5	1025	143
SPH 72-14	50/37			268	246	218	185	146	1172	51.5	1025	143
SPH 72-16	60/45			305	280	249	212	168	1336	60.2	1128	154
SPH 72-17	60/45			323	297	264	226	180	1393	63.2	1128	154

Cat.	Motor HP/KW	Disch Inch	Q (Flow Rate)					Pump		Motor		
			ℓ/min	326	484	653	815	979	L	Wt.	L	Wt.
			m ³ /hr	19.5	29	39.1	18.8	58.6	mm	kg	mm	kg
SPH 86-2	10/7.5	4	H (m)	43	39	34	28	20	420	13.7	630	57
SPH 86-3	15/11			64	59	51	42	30	477	16.8	690	66
SPH 86-4	15/11			85	78	68	56	40	534	19.9	690	66
SPH 86-5	20/15			405	97	85	70	51	591	23	760	76.5
SPH 86-6	25/18.5			126	115	101	84	62	648	26.1	800	79
SPH 86-7	30/22			146	134	118	98	73	705	29.2	830	81
SPH 86-8	35/26			166	152	134	112	84	830	34.3	895	117
SPH 86-9	40/30			185	170	150	126	96	887	37.4	955	129
SPH 86-10	40/30			205	188	166	140	107	944	40.5	955	129
SPH 86-11	50/37			224	206	182	154	119	1001	43.6	1025	143
SPH 86-12	50/37			243	223	198	168	131	1058	46.7	1025	143

Cat.	Motor HP/KW	Disch Inch	Q (Flow Rate)					Pump		Motor		
			ℓ/min	418	626	835	1044	1253	L	Wt.	L	Wt.
			m ³ /hr	25	37.5	50	62.5	75	mm	kg	mm	kg
SPH 100-1	5.0/3.7	4	H (m)	19	18	16	13	9	382	12.3	375	37.5
SPH 100-2	10/7.5			38	35	31	25	18	458	17.1	630	57
SPH 100-3	15/11			57	52	47	38	27	534	21.9	690	66
SPH 100-4	20/15			75	70	62	51	37	610	26.7	760	76.5
SPH 100-5	25/18.5			94	87	77	63	46	686	31.5	800	79
SPH 100-6	30/22			112	103	92	76	56	762	36.3	830	81
SPH 100-7	35/26			130	120	107	89	66	906	43.1	895	117
SPH 100-8	40/30			148	136	122	101	76	982	47.9	955	129
SPH 100-9	50/37			165	152	136	114	87	1058	52.7	1025	143
SPH 100-10	50/37			183	169	150	127	97	1134	57.5	1025	143
SPH 100-11	60/45			200	184	164	139	108	1210	62.3	1128	154
SPH 100-12	60/45			217	200	178	152	119	1286	67.1	1128	154


SPC
Applications

- Deep Well Water Supply
- Irrigation
- Hot Springs
- De-watering
- Environmental
- Fountains
- Reverse Osmosis
- High Rise Building
- Sea Water - SS316L/Duplex SS

8" SPH Pump

2900rpm

Cat.	Motor		Disch	Q (Flow Rate)					Pump		Motor	
	HP/KW	Inch		ℓ/min	493	735	987	1236	1486	L	Wt.	L
			m ³ /hr	29.5	44	59.1	74	89	mm	kg	mm	kg
SPH 130-1	5.0/3.7	4	H (m)	19	17	15	12	9	454	10.3	375	37.5
SPH 130-2	10/7.5			38	35	30	25	18	609	15.3	630	57
SPH 130-3	15/11			57	52	45	37	27	764	20.3	690	66
SPH 130-4	20/15			76	68	60	49	37	919	25.3	760	76.5
SPH 130-5	25/18.5			94	85	74	62	47	1074	30.3	800	79
SPH 130-6	30/22			112	101	89	74	57	1229	35.3	830	81

Cat.	Motor		Disch	Q (Flow Rate)					Pump		Motor	
	HP/KW	Inch		ℓ/min	585	877	1169	1453	1754	L	Wt.	L
			m ³ /hr	35	52.5	70	87	105	mm	kg	mm	kg
SPH 150-1	7.5/5.5	4	H (m)	19	18	16	13	10	454	10.4	410	39.5
SPH 150-2	15/11			38	35	32	26	20	609	15.5	690	66
SPH 150-3	20/15			57	52	47	39	30	764	20.6	760	76.5
SPH 150-4	25/18.5			75	69	63	52	40	919	25.7	800	79
SPH 150-5	30/22			93	86	78	65	51	1074	30.8	830	81
SPH 150-6	40/30			111	103	93	79	65	1297	37.9	955	129
SPH 150-7	50/37			128	119	107	92	73	1452	43	1025	143
SPH 150-8	50/37			146	135	122	105	84	1607	48.1	1025	143

12" SPD Pump - High head

2900rpm

Cat.	Motor	DISCH Inch	Q (Flow Rate)					Pump		Motor		
			ℓ/min	645	969	1290	1612	1937	L	Wt.	L	Wt.
			m ³ /hr	38.6	58	77.2	96.5	116	mm	kg	mm	kg
SPD 170-2	20/15	6"x10k	H (m)	64	57	49	39	28	553	33.1	760	76.5
SPD 170-3	30/22			96	85	73	59	42	634	39.7	830	81
SPD 170-4	40/30			128	114	98	78	56	648	44.3	955	129
SPD 170-5	50/37			160	142	122	99	71	729	50.9	1025	143
SPD 170-6	60/45			192	170	147	119	86	811	57.5	1128	154
SPD 170-7	75/56			223	199	171	139	102	892	64.1	1218	175
SPD 170-7.5	75/56			239	213	184	150	110	974	70.7	1218	175
SPD 170-9	90/67			285	255	221	181	134	974	70.7	1176	310
SPD 170-10	100/75			317	283	246	202	150	1055	77.3	1236	334

Cat.	Motor	DISCH Inch	Q (Flow Rate)					Pump		Motor		
			ℓ/min	683	1019	1366	1703	2054	L	Wt.	L	Wt.
			m ³ /hr	40.9	61	81.8	102	123	mm	kg	mm	kg
SPD 190-2	30/22	6"x10k	H (m)	71	64	57	45	33	553	33.1	830	81
SPD 190-3	40/30			106	96	84	68	49	566	37.7	955	129
SPD 190-4	50/37			140	127	112	91	66	648	44.3	1025	143
SPD 190-5	60/45			174	158	139	114	84	729	50.9	1128	154
SPD 190-6	75/56			207	188	166	136	101	811	57.5	1218	175
SPD 190-7	90/67			240	218	192	159	119	892	64.1	1176	310
SPD 190-8	100/75			272	248	219	182	137	974	70.7	1236	334
SPD 190-9	125/93			336	306	270	228	174	1137	83.9	1376	394



12" SPK Pump- High Flow

Cat.	Motor	DISCH Inch	Q (Flow Rate)					Pump		Motor		
			ℓ/min	868	1303	1737	2171	2789	L	Wt.	L	Wt.
			m ³ /hr	52	78	104	130	167	mm	kg	mm	kg
SPK 260-1	15/11	-	H (m)	31	29	25	21	15	-	-	-	-
SPK 260-1.5	25/18.5			52	48	43	36	26	-	-	-	-
SPK 260-2	30/22			61	56	50	42	31	-	-	-	-
SPK 260-2.5	40/30			83	77	69	57	43	-	-	-	-
SPK 260-3	50/37			91	84	75	63	47	-	-	-	-
SPK 260-4	60/45			114	106	95	82	63	-	-	-	-
SPK 260-5	75/56			138	127	112	94	72	-	-	-	-
SPK 260-6	100/75			175	162	146	125	100	-	-	-	-

• *Note: All data is to be available soon.

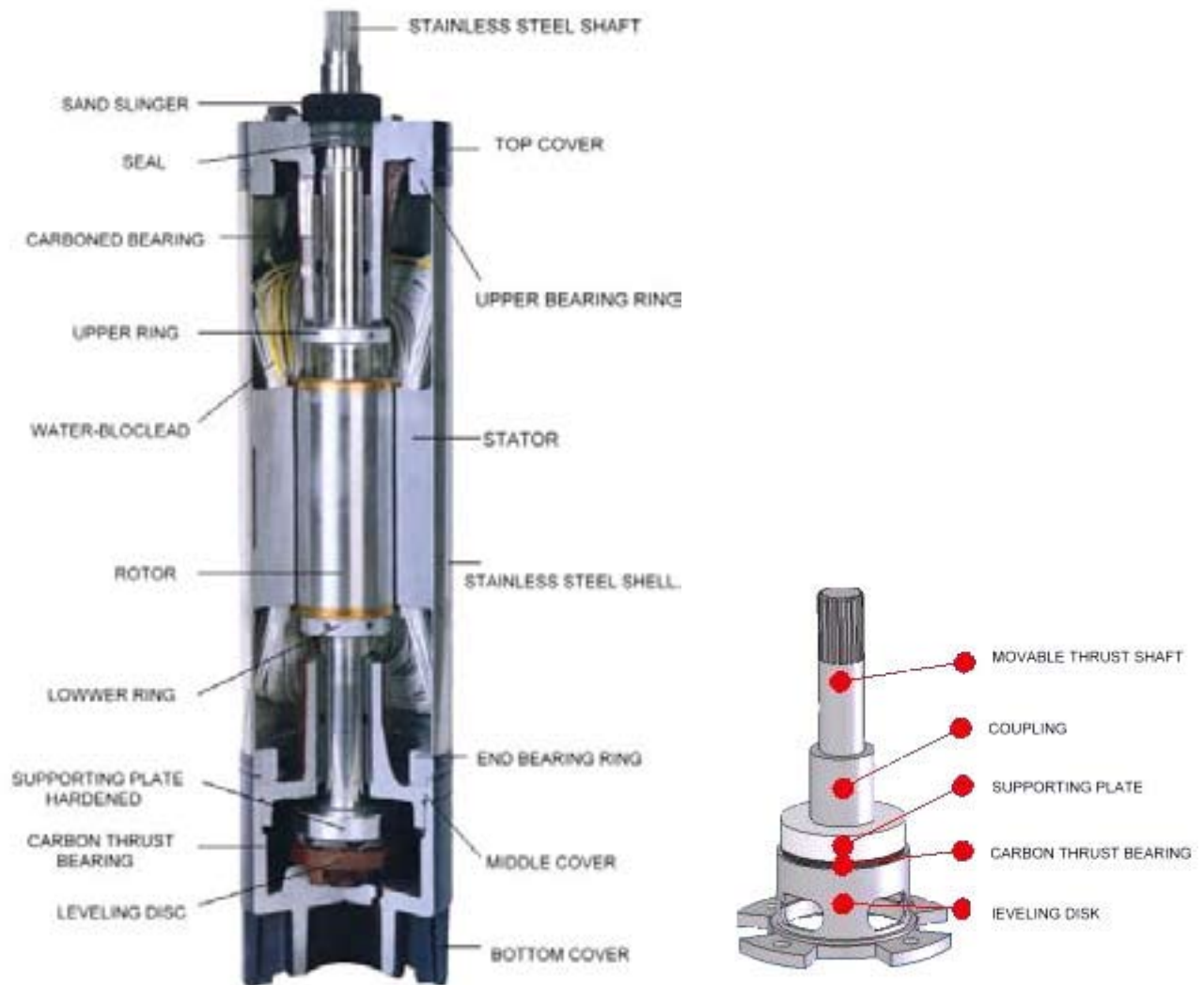
12" SPR Pump -High Flow

Cat.	Motor	DISCH Inch	Q (Flow Rate)					Pump		Motor		
			ℓ/min	949	1420	1897	2371	2839	L	Wt.	L	Wt.
			m ³ /hr	56.8	85	113.6	142	170	mm	kg	mm	kg
SPR 270-1	20/15	-	H (m)	35	32	29	24	17	-	-	-	-
SPR 270-2	40/30			68	63	56	47	35	-	-	-	-
SPD 270-2.5	50/37			85	78	70	59	45	-	-	-	-
SPD 270-3	60/45			101	93	83	71	54	-	-	-	-
SPD 270-3.5	75/56			117	108	97	82	64	-	-	-	-
SPD 270-5	100/75			163	151	136	118	94	-	-	-	-

• *Note: All data is to be available soon.

Multistage sectional thrust bearing, Multistage sand-proof system

Multistage sectional sand-proof thrust bearing could add or remove by requiring
 Multistage thrust bearing: Increase life of pump & motor system. Reduce the attrition by gravity in high head installation.
 Suitable for 250 m- 600 m head applications.
 For 5HP – 300HP(6" to 12") motors or 90°C high temperature motors.
 The sectional sand-proof thrust bearing belongs to dual coupling system. The dual coupling system would protect the motor if pump were damaged by a sandy well. Reduce the maintenance fees and increase the motor life.



WXZ Close Coupled Single Stage Pumps

Series WXZ Pumps are designed and manufactured to the European Standard DIN 24255. This is a close coupled version. The design advantage is that the pump can be fitted with IEC standard electric motors easily. This provides a wide range of motor selection. Meanwhile, an extra bearing has been installed onto the bearing house of pump end which reduce the failure of the motor bearing during heavy duty applications.



2900rpm

Cat.	Speed (rpm)	Q (Flow Rate)									Max.. Motor hp/kw			
		ℓ/min	0	116.9	150.3	200.4	250.5	283.9	334	384.1				
		m3/h	0	7	9	12	15	17	20	23				
WXZ 32-13-100	2900	H (m)	13.8	13	12.5	11	9.1							1.5hp/1.1kw
WXZ 32-13-120	2900		19.8	19	18.5	17.3	15.8							3.0hp/2.2kw
WXZ 32-13-139	2900		24.5	23.8	23.2	24	23	21						5.0hp/4.0kw
WXZ 32-16-145	2900		29		28.8	27.5	25	23.5						3.0hp/2.2kw
WXZ 32-16-155	2900		34		33	33	29.8	28						4.0hp/3.0kw
WXZ 32-16-165	2900		39		38	36.5	34.5	32.8						5.5hp/4.0kw
WXZ 32-16-174	2900		43		42	41	39	37.2						7.5hp/5.5kw
WXZ 32-20-195	2900		54			53	51	49	45					7.5hp/5.5kw
WXZ 32-20-205	2900		60			59	56.9	55.3	51.8					10hp/7.5kw
WXZ 32-20-214	2900		65			64	62.3	60.5	58					15hp/11kw
WXZ 32-26-255	2900		93				90	91	89	85				20hp/15kw
WXZ 32-26-264	2900		99				97.6	97.5	95	92				25hp/18.5kw

Cat.	Speed (rpm)	Q (Flow Rate)											Max. Motor hp/kw			
		ℓ/min	0	250.5	283.9	334	384.1	450.9	501	534.4	617.9	668				
		m3/h	0	15	17	20	23	27	30	32	37	40				
WXZ 40-13-110	2900	H (m)	16.5	16.1	16	15.5	14.8	14								3.0hp/2.2kw
WXZ 40-13-120	2900		19.5	19	19	18.5	18	17								4.0hp/3.0kw
WXZ 40-13-139	2900		26	25.4	25.5	25.2	24.8	24								5.5hp/4.0kw
WXZ 40-16-155	2900		32		30.5	29	27.6	25	22							5.5hp/4.0kw
WXZ 40-16-165	2900		36.5		35	33.5	32.4	30	27.5							7.5hp/5.5kw
WXZ 40-16-174	2900		40.5		39	38	36	35	32.5							10hp/7.5kw
WXZ 40-20-175	2900		41			39	38.2	35.8	32.3	31						7.5hp/5.5kw
WXZ 40-20-185	2900		46			44.5	43.5	40	38.8	36						10hp/7.5kw
WXZ 40-20-214	2900		62			61	59.7	57	55	53.3						15hp/11kw
WXZ 40-26-255	2900		92			90.2	90	89	88	87	84					25hp/18.5kw
WXZ 40-26-264	2900		99			97.3	97	96	95	94	90					30hp/22kw

Cat.	Speed (rpm)	Q (Flow Rate)															Max. Motor hp/kw	
		ℓ/min	0	450.9	501	534.4	617.9	668	734.8	784.9	835	901.8	968.6	1018.7	1068.8	1469.6		
		m3/h	0	27	30	32	37	40	44	47	50	54	58	61	64	88		
WXZ 50-13-120	2900	H (m)	19.9	19	18.8	18.7	18.2	17.9	17.5	17	16.6						5.5hp/4.0kw	
WXZ 50-13-130	2900		23.2	22.5	22.3	22.2	22	21.2	21	20.5	20						7.5hp/5.5kw	
WXZ 50-13-139	2900		26.5	25.8	25.5	25.4	25.2	24.5	24.3	23.8	23.4						10hp/7.5kw	
WXZ 50-16-165	2900		37		36	35.7	35	35	34.5	34	33.5	33	32.2					10hp/7.5kw
WXZ 50-16-174	2900		41		40	39.8	39.2	39	38.2	38	37.6	37.3	36.2					15hp/11kw
WXZ 50-20-195	2900		54.8		53.2	52.2	51.2	50.5	50	49.6	48.2	47	46					15hp/11kw
WXZ 50-20-205	2900		60		59	58.5	58	57	56	55	54.5	52.6	51.7					20hp/15kw
WXZ 50-20-214	2900		66		65	64	63	62.8	62	61.3	60	58	57					25hp/18.5kw
WXZ 50-26-235	2900		78			78.2	78	78	77.8	76	75.8	74	73.5	73				30hp/22kw
WXZ 50-26-255	2900		93			92.5	92	92	91.5	91	90	89.5	89	87.5				40hp/30kw
WXZ 50-26-264	2900		99.2			99.5	99	99	98.5	98	97	96.5	96	95				50hp/37kw

WXZ
Applications

- Irrigation
- Pressure Boosting
- De-watering
- Fire Protection
- Plumbing

Material

- Casing -Cast Iron and standard; optional Stainless Steel
- Impeller -Bronze standard, optional Cast Iron or Stainless Steel
- Shaf -Stainless Steel
- Shaft Seal -Mechanical Seal Standard



2900rpm

Cat.	Speed	Q (Flow Rate)													Max. Motor	
		l/min	0	734.8	784.9	835	901.8	968.6	1018.7	1068.8	1469.6	1803.6	2037.4	2171		
		(rpm)	m3/h	0	44	47	50	54	58	61	64	88	108	122		130
WXZ 65-13-120	2900	H	18.1	17	16.8	16.5	16.3	16	15.7	15.3						7.5hp/5.5kw
WXZ 65-13-130	2900		21.1	20.2	20	19.9	19.8	19.1	18.8	18.5						10hp/7.5kw
WXZ 65-13-139	2900		24.2	23.3	23	22.8	22.7	22.1	22	21.5						15hp/11kw
WXZ 65-16-155	2900		34		32.2	32	30	30.3	30.2	30	27.2					15hp/11kw
WXZ 65-16-165	2900		38.5		37	36.5	36	35.1	35	34.8	32					20hp/15kw
WXZ 65-16-174	2900	(m)	42.5		41	40.7	40.2	39.8	39.7	39	36.2					25hp/18.5kw
WXZ 65-20-175	2900		43				42.2	42	42	40.2	37.8	34				20hp/15kw
WXZ 65-20-185	2900		48				47.2	47	46.8	44.8	43	39				25hp/18.5kw
WXZ 65-20-205	2900		59				58.5	58	58	57	54	50.2				30hp/22kw
WXZ 65-20-214	2900		64				63	63.2	63	62	59.5	56				40hp/30kw

Cat.	Speed	Q (Flow Rate)												Max. Motor		
		l/min	0	1018.7	1068.8	1469.6	1803.6	2037.4	2171	2505	2839	3507	3674			
		(rpm)	m3/h	0	61	64	88	108	122	130	150	170	210		220	
WXZ 80-16-135	2900	H	23	21	23	21.8	21	20	20	18	15					N/A
WXZ 80-16-145	2900		26.5	27	26.5	25.8	25	24	24	22	19.2					20hp/15kw
WXZ 80-16-155	2900		30	30.8	30.5	29.8	29	28	27	26	23.8					25hp/18.5kw
WXZ 80-16-165	2900		34.5	35	35	34	33	32	32	30	28.1					30hp/22kw
WXZ 80-20-175	2900	(m)	44		43	42.5	42	41	40	39	36	27.5				30hp/22kw
WXZ 80-20-195	2900		53		52.5	52	52	52	51	50	48	41				40hp/30kw
WXZ 80-20-205	2900		59		59	58.5	58	57	57	55.5	54	47.5				50hp/37kw
WXZ 80-20-214	2900		64		64	63.5	63	63	62	61	60	54				60hp/45kw

Cat.	Speed	Q (Flow Rate)										Max. Motor				
		l/min	0	1803.6	2037.4	2171	2555.1	2889.1	3423.5	3674	4091.5					
		(rpm)	m3/h	0	108	122	130	153	173	205	220		245			
WXZ 100-16-174	2900	H	35	32	34.5	33	31	29.5	26	24	21					30hp/22kw
WXZ 100-16-180	2900	(m)	37	37	37.5	36	34	32	29	27	24					40hp/30kw

WXZ Applications

- Irrigation
- Pressure Boosting
- De-watering
- Fire Protection
- Plumbing

Material

- Casing -Cast Iron and standard; optional Stainless Steel
- Impeller -Bronze standard, optional Cast Iron or Stainless Steel
- Shaf -Stainless Steel
- Shaft Seal -Mechanical Seal Standard



1450rpm

Cat.	Speed (rpm)	Q (Flow Rate)									Max. Motor hp/kw	
		ℓ/min m3/h	0	50	84	117	150	200	251	284		
WXZ 32-13-139	1450		6.6	6.4	6.2	5.7	5.1					0.75hp/0.55kw
WXZ 32-16-174	1450		10.5		10.3	10.0	9.6	8.5				0.75hp/0.55kw
WXZ 32-20-214	1450		16.7		16.6	15.9	15					1.5hp/1.1kw
WXZ 32-26-255	1450		23.1		23.1	23	22.5	21.2	19.5	18		3.0hp/2.2kw
WXZ 32-26-264	1450		25		25	24.8	24.1	23				4.0hp/3.0kw

Cat.	Speed (rpm)	Q (Flow Rate)								Max. Motor hp/kw
		ℓ/min m3/h	0	117	150	200	251	284	334	
WXZ 40-13-130	1450		5.7	5.6	5.5	5.4	5.1	4.8		0.75hp/0.55kw
WXZ 40-13-139	1450		6.6	6.4	6.3	6.2	6	5.7		1.0hp/0.75kw
WXZ 40-16-174	1450		10.8		9.8	9.4	8.4	7.5		1.5hp/1.1kw
WXZ 40-20-214	1450		15.55		15.45	15	14.05			2.0hp/1.5kw
WXZ 40-26-264	1450		25		24.5	24	23.6	22.8		4.0hp/3.0kw
WXZ 40-32-285	1450		28.4			29.4	28.8	28	26	4.0hp/3.0kw
WXZ 40-32-300	1450		31.3			32.8	32	31.2	29.6	5.5hp/4.0kw
WXZ 40-32-329	1450		38			39.1	39	38.4	37	7.5kw/5.5kw

Cat.	Speed (rpm)	Q (Flow Rate)												Max. Motor hp/kw	
		ℓ/min m3/h	0	200	251	284	334	384	418	451	501	534	618		
WXZ 50-13-125	1450		5	4.88	4.8	4.7	4.5	4.3	4.2						0.75hp/0.55kw
WXZ 50-13-130	1450		5.9	5.75	5.6	5.5	5.35	5.2	5.1						1.0hp/0.5kw
WXZ 50-13-139	1450		6.7	6.6	6.45	6.4	6.2	6.1	6						1.5hp/1.1kw
WXZ 50-16-174	1450		10.55		10.5	10.5	10.3	10.2	9.95	9.85					2.0hp/1.5kw
WXZ 50-20-214	1450		16.6			16.2	15.9	15.7	15.5	15.1					3.0hp/2.2kw
WXZ 50-26-245	1450		21.5				21	20.8	20.7	20.6	20	19.7			4.0hp/3.0kw
WXZ 50-26-255	1450		23.4				22.8	22.5	22.4	22.3	21.7	21.5			5.5hp/4.0kw
WXZ 50-26-264	1450		25				24.4	24.1	24	23.9	23.3	23			7.5hp/5.5kw
WXZ 50-32-270	1450		25					24.2	24	23.9	23.2	23	21.8		5.5hp/4.0kw
WXZ 50-32-285	1450		28					27.2	27	26.9	26.2	26	24.8		7.5hp/5.5kw
WXZ 50-32-315	1450		34					33.2	33	32.9	32.2	32	30.8		10hp/7.5kw
WXZ 50-32-329	1450		37.1					36.2	36	35.9	35.2	35	33.8		15hp/11kw

Cat.	Speed (rpm)	Q (Flow Rate)														Max. Motor hp/kw
		ℓ/min m3/h	0	334	384	418	451	501	534	618	668	735	785	835	902	
WXZ 65-13-130	1450		6	5.8	5.7	5.6	5.5	5.45	5.4	5.1						1.5hp/1.1kw
WXZ 65-13-139	1450		6.9	6.6	6.5	6.4	6.35	6.3	6.25	6						2.0hp/1.5kw
WXZ 65-16-174	1450		10.9		10.5	10.4	10.3	10.1	10	9.75	9.55					3.0hp/2.2kw
WXZ 65-20-214	1450		16			15.6	15.5	15.4	15.3	15	14.8	14.4	14.2			5.5hp/4.0kw
WXZ 65-26-255	1450		21				20.8	20.6	20.4	20	19.8	19.6	19.5	19.1		7.5hp/5.5kw
WXZ 65-26-264	1450		23				22.7	22.5	22.2	22	21.6	21.2	20.9	20.6		10hp/7.5kw
WXZ 65-32-285	1450		28.2					28	27.8	27.5	27	27	26.5	26		10hp/7.5kw
WXZ 65-32-315	1450		34.5					34.5	34.3	34.2	34	33.7	33.5	33		15hp/11kw
WXZ 65-32-329	1450		37.8					37.5	37.3	37	37.6	37	36.8	36.2		20hp/15kw

WXC Long Coupled Single Stage Pumps

Series WXC Pumps are designed and manufactured to the European Standard DIN 24255. This is a Bare Shaft Version. The design advantage is that the pump can be fitted with IEC standard electric motors easily. This provides a wide range of motor selection.



2900rpm

Cat.	Speed (rpm)	Q (Flow Rate)									Max. Motor hp/kw		
		ℓ/min m3/h	0	116.9 7	150.3 9	200.4 12	250.5 15	283.9 17	334 20	384.1 23			
WXC 32-13-100	2900		13.8	13	12.5	11	9.1						1.5hp/1.1kw
WXC 32-13-110	2900		16.6	16	15.3	13.8	12.1						1.5hp/1.1kw
WXC 32-13-120	2900		19.8	19	18.5	17.3	15.8						3.0hp/2.2kw
WXC 32-13-130	2900		23	22.2	21.7	21	19.5						3.0hp/2.2kw
WXC 32-13-139	2900		24.5	23.8	23.2	24	23						5.0hp/4.0kw
WXC 32-16-135	2900		26		25	23.5	21	19					3.0hp/2.2kw
WXC 32-16-145	2900		29		28.8	27.5	25	23.5					3.0hp/2.2kw
WXC 32-16-155	2900		34		33	33	29.8	28					4.0hp/3.0kw
WXC 32-16-165	2900		39		38	36.5	34.5	32.8					5.5hp/4.0kw
WXC 32-16-174	2900		43		42	41	39	37.2					7.5hp/5.5kw
WXC 32-20-175	2900	H (m)	43.8			42	39.5	37	32				7.5hp/5.5kw
WXC 32-20-185	2900		49			47	45	43.8	39				7.5hp/5.5kw
WXC 32-20-195	2900		54			53	51	49	45				7.5hp/5.5kw
WXC 32-20-205	2900		60			59	56.9	55.3	51.8				10hp/7.5kw
WXC 32-20-214	2900		65			64	62.3	60.5	58				15hp/11kw
WXC 32-26-225	2900		72				70	69	68	64			20hp/15kw
WXC 32-26-235	2900		79				77.3	76	75	71			20hp/15kw
WXC 32-26-245	2900		85				84	83	81	77			20hp/15kw
WXC 32-26-255	2900		93				90	91	89	85			25hp/18.5kw
WXC 32-26-264	2900		99				97.6	97.5	95	92			25hp/18.5kw

Cat.	Speed (rpm)	Q (Flow Rate)											Max. Motor hp/kw	
		ℓ/min m3/h	0	250.5 15	283.9 17	334 20	384.1 23	450.9 27	501 30	534.4 32	617.9 37	668 40		
WXC 40-13-100	2900		13.5	13.2	13	12.5	12	11						2.0hp/1.5kw
WXC 40-13-110	2900		16.5	16.1	16	15.5	14.8	14						3.0hp/2.2kw
WXC 40-13-120	2900		19.5	19	19	18.5	18	17						4.0hp/3.0kw
WXC 40-13-130	2900		22.5	22.4	22.2	22	21.3	20.5						5.5hp/4.0kw
WXC 40-13-139	2900		26	25.4	25.5	25.2	24.8	24						5.5hp/4.0kw
WXC 40-16-135	2900		24		22.5	21.8	19.3	15	10					4.0hp/3.0kw
WXC 40-16-145	2900		27.5		26.5	25.3	23.8	20	16.5					5.5hp/4.0kw
WXC 40-16-155	2900		32		30.5	29	27.6	25	22					5.5hp/4.0kw
WXC 40-16-165	2900		36.5		35	33.5	32.4	30	27.5					7.5hp/5.5kw
WXC 40-16-174	2900		40.5		39	38	36	35	32.5					10hp/7.5kw
WXC 40-20-175	2900		41			39	38.2	35.8	32.3	31				7.5hp/5.5kw
WXC 40-20-185	2900		46			44.5	43.5	40	38.8	36				10hp/7.5kw
WXC 40-20-195	2900	H (m)	51			49	48	46	44	41.3				15hp/11kw
WXC 40-20-205	2900		56			55	54	52	50	47.5				15hp/11kw
WXC 40-20-214	2900		62			61	59.7	57	55	53.3				15hp/11kw
WXC 40-26-225	2900		71.5			70	69	68	66	65.5	63			20hp/15kw
WXC 40-26-235	2900		78			76	75.5	75	73	72	69			25hp/18.5kw
WXC 40-26-245	2900		85			83.5	83	82	80	79	76.5			25hp/18.5kw
WXC 40-26-255	2900		92			90.2	90	89	88	87	84			25hp/18.5kw
WXC 40-26-264	2900		99			97.3	97	96	95	94	90			30hp/22kw
WXC 40-32-270	2900		102				98	94	86	85	75	65		30hp/22kw
WXC 40-32-285	2900		114				114	111	106	105	96	89		40hp/30kw
WXC 40-32-300	2900		126				129	127	123	121	115	108		50hp/37kw
WXC 40-32-315	2900		139				144	142	140	139	135	130		60hp/45kw
WXC 40-32-329	2900		151				156	156	155	154	151	147		75hp/55kw


WXC
Applications

- City Water supply
- Air-Conditioning
- Firefighting System
- Imigation

Material

- Casing -Cast Iron and Ductile Iron standard; Optional Stainless Steel
- Impeller -Bronze standard, optional Cast Iron & Stainless Steel
- Shaft -AISI420 standard, optional AISI304 & AISI316
- Shaft Seal -MechanicalSeal Standard
Carbon-Sic / Vinton(optional)
Ortional Gland Packing

2900rpm

Cat.	Speed (rpm)	Q (Flow Rate)															Max. Motor hp/kw
		l/min m3/h	0	450.9 27	501 30	534.4 32	617.9 37	668 40	734.8 44	784.9 47	835 50	901.8 54	968.6 58	1018.7 61	1068.8 64	1469.6 88	
WXC 50-13-100	2900	13.8	13	12.8	12.7	12	11.5	11	10.6	10							4.0hp/3.0kw
WXC 50-13-110	2900	16.8	16	15.8	15.7	15	14.5	14	13.6	13.2							5.5hp/4.0kw
WXC 50-13-120	2900	19.9	19	18.8	18.7	18.2	17.9	17.5	17	16.6							5.5hp/4.0kw
WXC 50-13-130	2900	23.2	22.5	22.3	22.2	22	21.2	21	20.5	20							7.5hp/5.5kw
WXC 50-13-139	2900	26.5	25.8	25.5	25.4	25.2	24.5	24.3	23.8	23.4							10hp/7.5kw
WXC 50-16-135	2900	24.8		24	23.8	23	22.5	22	21.8	21.3	21	18.7					10hp/7.5kw
WXC 50-16-145	2900	28.1		27.2	27	26.8	26.2	26	25.5	25	24.2	23					10hp/7.5kw
WXC 50-16-155	2900	32.5		31.8	31.5	31	30.8	30.2	29.9	29.1	28.5	27.2					10hp/7.5kw
WXC 50-16-165	2900	37		36	35.7	35	35	34.5	34	33.5	33	32.2					15hp/11kw
WXC 50-16-174	2900	41		40	39.8	39.2	39	38.2	38	37.6	37.3	36.2					15hp/11kw
WXC 50-20-175	2900	44			42.8	42	41	40	39	38.5	37.5	36	35				15hp/11kw
WXC 50-20-185	2900	49.5			48	47.2	47	46	44.2	44	43	41	40				20hp/15kw
WXC 50-20-195	2900	54.8			53.2	52.2	51.2	50.5	50	49.6	48.2	47	46				20hp/15kw
WXC 50-20-205	2900	60			59	58.5	58	57	56	55	54.5	52.6	51.7				25hp/18.5kw
WXC 50-20-214	2900	66			65	64	63	62.8	62	61.3	60	58	57				25hp/18.5kw
WXC 50-26-225	2900	72.1				72	71.2	71	70.8	70	69	68	67	66			40hp/30kw
WXC 50-26-235	2900	78				78.2	78	78	77.8	76	75.8	74	73.5	73			40hp/30kw
WXC 50-26-245	2900	86				85.5	85	84.2	84	83.6	83	82.5	82	81			50hp/37kw
WXC 50-26-255	2900	93				92.5	92	92	91.5	91	90	89.5	89	87.5			50hp/37kw
WXC 50-26-264	2900	99.2				99.5	99	99	98.5	98	97	96.5	96	95			50hp/37kw
WXC 50-32-270	2900	100					99	98	97	97	96	95	94.5	94	73		50hp/37kw
WXC 50-32-285	2900	112					110	109	108	108	107	106	105.5	105	88		60hp/45kw
WXC 50-32-300	2900	125					122.3	122	121	120	120	119	118.5	118	104		75hp/55kw
WXC 50-32-315	2900	137					135	134	133	133	132	131	130.5	130	118		100hp/75kw
WXC 50-32-329	2900	149					148	147	146	146	145	144	143.5	143	133		100hp/75kw

Cat.	Speed (rpm)	Q (Flow Rate)												Max. Motor hp/kw			
		l/min m3/h	0	734.8 44	784.9 47	835 50	901.8 54	968.6 58	1018.7 61	1068.8 64	1469.6 88	1803.6 108	2037.4 122		2171 130		
WXC 65-13-100	2900	12.8	11.7	11.5	11	10.5	10.2	10	9.6								4hp/3.0kw
WXC 65-13-110	2900	15.1	14.1	14	13.6	13.5	13	12.8	12.5								5.5hp/4kw
WXC 65-13-120	2900	18.1	17	16.8	16.5	16.3	16	15.7	15.3								7.5hp/5.5kw
WXC 65-13-130	2900	21.1	20.2	20	19.9	19.8	19.1	18.8	18.5								10hp/7.5kw
WXC 65-13-139	2900	24.2	23.3	23	22.8	22.7	22.1	22	21.5								15hp/11kw
WXC 65-16-135	2900	26		23.5	23.2	22.8	22.2	22.2	22.1	19.3							10hp/7.5kw
WXC 65-16-145	2900	29.8		28.8	28.7	27	26.3	26.2	26	23.2							15hp/11kw
WXC 65-16-155	2900	34		32.2	32	30	30.3	30.2	30	27.2							15hp/11kw
WXC 65-16-165	2900	38.5		37	36.5	36	35.1	35	34.8	32							20hp/15kw
WXC 65-16-174	2900	42.5		41	40.7	40.2	39.8	39.7	39	36.2							25hp/18.5kw
WXC 65-20-175	2900	43					42.2	42	42	40.2	37.8	34					25hp/18.5kw
WXC 65-20-185	2900	48					47.2	47	46.8	44.8	43	39					30hp/22kw
WXC 65-20-195	2900	53					52.2	52	52	51	48	44.8					30hp/22kw
WXC 65-20-205	2900	59					58.5	58	58	57	54	50.2					40hp/30kw
WXC 65-20-214	2900	64					63	63.2	63	62	59.5	56					40hp/30kw
WXC 65-26-225	2900	74					74	73	72	69	66	61	58				50hp/37kw
WXC 65-26-235	2900	80					80	80	80	75	73	69	66				60hp/45kw
WXC 65-26-245	2900	87					87	87	86	83	82	77	74				75hp/55kw
WXC 65-26-255	2900	94					94	94	94	90	88	84	81				75hp/55kw
WXC 65-26-264	2900	101					100	100	100	98	95	91	88				100hp/75kw
WXC 65-32-270	2900	94						91	90	88	80	70	64				75hp/55kw
WXC 65-32-285	2900	104						103	102	99	92	84	79				100hp/75kw
WXC 65-32-300	2900	116							113	112	109	104	97	92			100hp/75kw
WXC 65-32-315	2900	128							126	125	122	117	114	107			120hp/90kw
WXC 65-32-329	2900	139								137	136	133	129	124	120		120hp/90kw

WXC Long Coupled Single Stage Pumps

Series WXC Pumps are designed and manufactured to the European Standard DIN 24255. This is a Bare Shaft Version. The design advantage is that the pump can be fitted with IEC standard electric motors easily. This provides a wide range of motor selection.



2900rpm

Cat.	Speed (rpm)	Q (Flow Rate)												Max. Motor hp/kw		
		ℓ/min	0	1018.7	1068.8	1469.6	1803.6	2037.4	2171	2505	2839	3507	3674			
		m3/h	0	61	64	88	108	122	130	150	170	210	220			
WXC 80-16-135	2900	23	21	23	21.8	21	20	20	18	15						20hp/15kw
WXC 80-16-145	2900	26.5	27	26.5	25.8	25	24	24	22	19.2						20hp/15kw
WXC 80-16-155	2900	30	30.8	30.5	29.8	29	28	27	26	23.8						25hp/18.5kw
WXC 80-16-165	2900	34.5	35	35	34	33	32	32	30	28.1						30hp/22kw
WXC 80-16-174	2900	37.5	39	38.8	37.6	37	36.5	36	35	32.5						40hp/30kw
WXC 80-20-175	2900	44		43	42.5	42	41	40	39	36	27.5					40hp/30kw
WXC 80-20-185	2900	48		48	47.5	47	46	46	44	43	34					40hp/30kw
WXC 80-20-195	2900	53		52.5	52	52	52	51	50	48	41					50hp/37kw
WXC 80-20-205	2900	59		59	58.5	58	57	57	55.5	54	47.5					60hp/45kw
WXC 80-20-214	2900	64		64	63.5	63	63	62	61	60	54					60hp/45kw
WXC 80-26-225	2900	72			70	68	66	66	63	58	52	48				60hp/45kw
WXC 80-26-235	2900	79			77	75	73	73	71	66	60	54				75hp/55kw
WXC 80-26-245	2900	86			83	83	81	81	77	73	67	62				100hp/75kw
WXC 80-26-255	2900	93			91	90	88	88	84	81	75	69				100hp/75kw
WXC 80-26-264	2900	100			99	96	95	95	92	88	82	77				100hp/75kw
WXC 80-32-270	2900	98				96	95	94	94	92	86	82				120hp/90kw
WXC 80-32-285	2900	110					109	107	106	106	103	99	95			150hp/110kw
WXC 80-32-300	2900	123						122	121	120	120	117	113	109		150hp/110kw
WXC 80-32-315	2900	138						136	135	134	134	131	127	123		175hp/132kw
WXC 80-32-329	2900	152						151	150	149	149	146	142	138		175hp/132kw

Cat.	Speed (rpm)	Q (Flow Rate)														Max. Motor hp/kw
		ℓ/min	0	1803.6	2037.4	2171	2555.1	2889.1	3423.5	3674	4091.5	4509	5010	5678	6346	
		m3/h	0	108	122	130	153	173	205	220	245	270	300	340	380	
WXC 100-16-174	2900	35	32	34.5	33	31	29.5	26	24	21						30hp/22kw
WXC 100-16-180	2900	37	37	37.5	36	34	32	29	27	24						40hp/30kw
WXC 100-20-175	2900	45		44	44	43	42	39.5	37	34	32	27				50hp/37kw
WXC 100-20-185	2900	51		49	49	48	47	45	43	40	38	33				60hp/45kw
WXC 100-20-195	2900	56		55	55	54	53	51	49	46	44	39				60hp/45kw
WXC 100-20-205	2900	62		61	61	60	59	57	55	52	50	45				75hp/55kw
WXC 100-20-214	2900	68		67	67	65	64	62	60	57	55	50				100hp/75kw
WXC 100-26-225	2900	74			75	74	74	73	72	70	68	66	63	60		120hp/90kw
WXC 100-26-235	2900	81			82	81	81	80	79	77	75	73	70	67		120hp/90kw
WXC 100-26-245	2900	88			87	88	88	87	86	84	82	80	77	74		150hp/110kw
WXC 100-26-255	2900	95			96	95	95	95	94	93	91	89	87	84	81	175hp/132kw
WXC 100-26-264	2900	102				101	102	102	101	100	98	87	85	82	79	175hp/132kw

Cat.	Speed (rpm)	Q (Flow Rate)											Max. Motor hp/kw			
		ℓ/min	0	2505	2839	3507	3674	4175	4509	5010	5678	6346		7181		
		m3/h	0	150	170	210	220	250	270	300	340	380		430		
WXC 125-20-175	2900	40	39.5	39	39	38.5	38	37	36	33.5	31	27				75hp/55kw
WXC 125-20-185	2900	45	44	44	43.5	43.5	43	42	41	39	36	32				75hp/55kw
WXC 125-20-195	2900	50	49	49	48.5	48	48	47	46	44	42	38				100hp/75kw
WXC 125-20-205	2900	56	55	55	53.5	53	53	52	51.5	50	47	43				100hp/75kw
WXC 125-20-214	2900	60	59	59	58.5	58	58	57.5	56.5	56	53	49				120hp/90kw


WXC
Applications

- City Water supply
- Air-Conditioning
- Firefighting System
- Imigation

Material

- Casing -Cast Iron and Ductile Iron standard; Optional Stainless Steel
- Impeller -Bronze standard, optional Cast Iron & Stainless Steel
- Shaft -AISI420 standard, optional AISI304 & AISI316
- Shaft Seal -MechanicalSeal Standard
Carbon-Sic / Vinton(optional)
Ortional Gland Packing

1450rpm

Cat.	Speed (rpm)	Q (Flow Rate)									Max. Motor hp/kw
		ℓ/min m3/h	0	50	84	117	150	200	251	284	
WXC 32-13-100	1450		3.4	3.3	3	2.9	1.4				0.5hp/0.37kw
WXC 32-13-110	1450		4.1	4	3.7	3.4	2.2				0.5hp/0.37kw
WXC 32-13-120	1450		4.9	4.7	4.5	4	3.3				0.5hp/0.37kw
WXC 32-13-130	1450		5.8	5.6	5.4	4.8	4.2				0.75hp/0.55kw
WXC 32-13-139	1450		6.6	6.4	6.2	5.7	5.1				0.75hp/0.55kw
WXC 32-16-135	1450		6.3		6.1	5.7	5.3	4.2			0.75hp/0.55kw
WXC 32-16-145	1450		7.3		7.1	6.7	6.2	5.2			0.75hp/0.55kw
WXC 32-16-155	1450		8.3		8.2	7.8	7.3	6.2			0.75hp/0.55kw
WXC 32-16-165	1450		9.4		9.3	8.9	8.5	7.4			1.0hp/0.75kw
WXC 32-16-174	1450		10.5		10.3	10.0	9.6	8.5			1.0hp/0.75kw
WXC 32-20-175	1450	H (m)	11		10.9	10.1	9				1.0hp/0.75kw
WXC 32-20-185	1450		12.5		12.2	11.5	10.6				1.0hp/0.75kw
WXC 32-20-195	1450		13.8		13.6	13	12				1.5hp/1.1kw
WXC 32-20-205	1450		17		15.1	14.4	13.6				1.5hp/1.1kw
WXC 32-20-214	1450		16.7		16.6	15.9	15				1.5hp/1.1kw
WXC 32-26-225	1450		18		18	17.8	17.1	16	13.9	12.9	2.0hp/1.5kw
WXC 32-26-235	1450		19.8		19.8	19.5	19	17.8	15.8	14	3.0hp/2.2kw
WXC 32-26-245	1450		21.5		21.4	21.1	20.7	18.3	17.5	16	3.0hp/2.2kw
WXC 32-26-255	1450		23.1		23.1	23	22.5	21.2	19.5	18	4.0hp/3.0kw
WXC 32-26-264	1450		25		25	24.8	24.1	23			4.0hp/3.0kw

Cat.	Speed (rpm)	Q (Flow Rate)								Max. Motor hp/kw
		ℓ/min m3/h	0	117	150	200	251	284	334	
WXC 40-13-100	1450		3.4	3.3	3.2	2.9	2.7	2.4		0.5hp/0.37kw
WXC 40-13-110	1450		4.1	4	3.9	3.7	3.4	3.2		0.5hp/0.37kw
WXC 40-13-120	1450		4.8	4.7	4.7	4.5	4.2	4		0.5hp/0.37kw
WXC 40-13-130	1450		5.7	5.6	5.5	5.4	5.1	4.8		0.75hp/0.55kw
WXC 40-13-139	1450		6.6	6.4	6.3	6.2	6	5.7		1.0hp/0.75kw
WXC 40-16-135	1450		6.5		5.6	5	3.65	2.25		0.5hp/0.37kw
WXC 40-16-145	1450		7.5		6.6	6.1	4.8	3.55		0.75hp/0.55kw
WXC 40-16-155	1450		7.8		7.7	7.3	6	4.8		1.0hp/0.75kw
WXC 40-16-165	1450		9.75		8.8	8.3	7.3	6.2		1.0hp/0.75kw
WXC 40-16-174	1450		10.8		9.8	9.4	8.4	7.5		1.5hp/1.1kw
WXC 40-20-175	1450		10.4		10.1	9.6	8.4			1.0hp/0.75kw
WXC 40-20-185	1450		11.6		11.4	10.9	9.8			1.5hp/1.1kw
WXC 40-20-195	1450	H (m)	11.95		12.7	12.2	11.2			2.0hp/1.5kw
WXC 40-20-205	1450		14.2		14	13.6	12.7			2.0hp/1.5kw
WXC 40-20-214	1450		15.55		15.45	15	14.05			2.0hp/1.5kw
WXC 40-26-225	1450		18		17.6	17.2	16.5	15.9		3.0hp/2.2kw
WXC 40-26-235	1450		19.6		19.2	19	18.2	17.3		3.0hp/2.2kw
WXC 40-26-245	1450		21.4		20.9	20.5	19.9	19.2		3.0hp/2.2kw
WXC 40-26-255	1450		23		22.5	22.4	22	21		4.0hp/3.0kw
WXC 40-26-264	1450		25		24.5	24	23.6	22.8		4.0hp/3.0kw
WXC 40-32-270	1450		25.6		26.1	25.5	24.5	22.9		5.5hp/4.0kw
WXC 40-32-285	1450		28.4		29.4	28.8	28	26		5.5hp/4.0kw
WXC 40-32-300	1450		31.3		32.8	32	31.2	29.6		7.5hp/5.5kw
WXC 40-32-315	1450		34.8		35.9	35.5	35	33.2		7.5hp/5.5kw
WXC 40-32-329	1450		38		39.1	39	38.4	37		10hp/7.5kw

WXC Long Coupled Single Stage Pumps

Series WXC Pumps are designed and manufactured to the European Standard DIN 24255. This is a Bare Shaft Version. The design advantage is that the pump can be fitted with IEC standard electric motors easily. This provides a wide range of motor selection.



1450rpm

Cat.	Speed (rpm)	Q (Flow Rate)												Max. Motor hp/kw		
		ℓ/min	0	200	251	284	334	384	418	451	501	534	618			
		m3/h	0	12	15	17	20	23	25	27	30	32	37			
WXZ 50-13-100	1450		3.45	3.25	3.2	3.1	2.95	2.78	2.6							0.5hp/0.37kw
WXZ 50-13-110	1450		4.2	4	3.95	3.9	3.7	3.5	3.3							0.75hp/0.55kw
WXC 50-13-120	1450		5	4.88	4.8	4.7	4.5	4.3	4.2							0.75hp/0.55kw
WXC 50-13-130	1450		5.9	5.75	5.6	5.5	5.35	5.2	5.1							1.0hp/0.75kw
WXC 50-13-139	1450		6.7	6.6	6.45	6.4	6.2	6.1	6							1.5hp/1.1kw
WXC 50-16-135	1450		6.3		6.2	6.1	6	5.85	5.7	5.4						1.0hp/0.75kw
WXC 50-16-145	1450		7.4		7.3	7.2	6.95	6.8	6.65	6.45						1.5hp/1.1kw
WXC 50-16-155	1450		8.35		8.25	8.25	8.1	7.9	7.7	7.55						2.0hp/1.5kw
WXC 50-16-165	1450		9.55		9.45	9.4	9.2	9.1	8.9	8.7						2.0hp/1.5kw
WXC 50-16-174	1450		10.55		10.5	10.5	10.3	10.2	9.95	9.85						2.0hp/1.5kw
WXC 50-20-175	1450		11.2			10.6	10.3	10	9.7	9.5						1.5hp/1.1kw
WXC 50-20-185	1450		12.5			11.9	11.6	11.4	11	10.7						1.5hp/1.1kw
WXC 50-20-195	1450		13.8			13.4	13	12.7	12.5	12.2						2.0hp/1.5kw
WXC 50-20-205	1450		15.4			14.8	14.6	14.3	14	13.7						3.0hp/2.2kw
WXC 50-20-214	1450		16.6			16.2	15.9	15.7	15.5	15.1						3.0hp/2.2kw
WXC 50-26-225	1450		18.1				17.5	17.2	17.1	17	16.5	16.4				4.0hp/3.0kw
WXC 50-26-235	1450		19.9					19.2	19	18.9	18.8	18.2	18			5.5hp/4.0kw
WXC 50-26-245	1450		21.5					21	20.8	20.7	20.6	20	19.7			5.5hp/4.0kw
WXC 50-26-255	1450		23.4					22.8	22.5	22.4	22.3	21.7	21.5			7.5hp/5.5kw
WXC 50-26-264	1450		25					24.4	24.1	24	23.9	23.3	23			7.5hp/5.5kw
WXC 50-32-270	1450		25						24.2	24	23.9	23.2	23	21.8		7.5hp/5.5kw
WXC 50-32-285	1450		28						27.2	27	26.9	26.2	26	24.8		10hp/7.5kw
WXC 50-32-300	1450		31						30.2	30	29.9	29.2	29	27.8		10hp/7.5kw
WXC 50-32-315	1450		34						33.2	33	32.9	32.2	32	30.8		15hp/11kw
WXC 50-32-329	1450		37.1						36.2	36	35.9	35.2	35	33.8		15hp/11kw

Cat.	Speed (rpm)	Q (Flow Rate)														Max. Motor hp/kw	
		ℓ/min	0	334	384	418	451	501	534	618	668	735	785	835	902		
		m3/h	0	20	23	25	27	30	32	37	40	44	47	50	54		
WXC 65-13-100	1450		3.5	3.3	3.2	3.1	3.05	3	2.95	2.6							0.75hp/0.55kw
WXC 65-13-110	1450		4.3	4	4	3.9	3.8	3.75	3.7	3.4							1.0hp/0.75kw
WXC 65-13-120	1450		5.1	4.9	4.8	4.7	4.65	4.6	4.5	4.2							1.0hp/0.75kw
WXC 65-13-130	1450		6	5.8	5.7	5.6	5.5	5.45	5.4	5.1							1.5hp/1.1kw
WXC 65-13-139	1450		6.9	6.6	6.5	6.4	6.35	6.3	6.25	6							2.0hp/1.5kw
WXC 65-16-135	1450		6.6		6.25	6.05	6	5.8	5.7	5.4	5.25						1.5hp/1.1kw
WXC 65-16-145	1450		7.5		6.8	6.7	6.95	6.8	6.65	6.4	5.2						2.0hp/1.5kw
WXC 65-16-155	1450		8.6		7.5	7.4	8	7.9	7.8	7.5	7.2						2.0hp/1.5kw
WXC 65-16-165	1450		9.8		9.4	9.3	9.2	9	8.9	8.6	8.25						3.0hp/2.2kw
WXC 65-16-174	1450		10.9		10.5	10.4	10.3	10.1	10	9.75	9.55						3.0hp/2.2kw
WXC 65-20-175	1450		10.6			10.4	10.2	10	9.9	9.6	9.5	9.1	8.8				3.0hp/2.2kw
WXC 65-20-185	1450		12			11.7	11.4	11.2	11.1	10.9	10.8	10.3	10.1				4.0hp/3.0kw
WXC 65-20-195	1450		13.2			12.9	12.8	12.6	12.5	12.2	12	11.6	11.4				4.0hp/3.0kw
WXC 65-20-205	1450		14.6			14.3	14.2	14	13.9	13.6	13.5	13.1	12.9				5.5hp/4.0kw
WXC 65-20-214	1450		16			15.6	15.5	15.4	15.3	15	14.8	14.4	14.2				5.5hp/4.0kw
WXC 65-26-225	1450		16.5				16	16	15.8	15.5	15.2	14.8	14.4	14			5.5hp/4.0kw
WXC 65-26-235	1450		18					17.7	17.5	17.2	16.8	16.6	16.2	16	15.8		7.5hp/5.5kw
WXC 65-26-245	1450		19.4					19.2	19	18.8	18.5	18.3	18	17.6	17.1		7.5hp/5.5kw
WXC 65-26-255	1450		21					20.8	20.6	20.4	20	19.8	19.6	19.5	19.1		7.5hp/5.5kw
WXC 65-26-264	1450		23					22.7	22.5	22.2	22	21.6	21.2	20.9	20.6		10hp/7.5kw
WXC 65-32-270	1450		25.2							25	24.8	24.5	24.1	24	23.5	23	10hp/7.5kw
WXC 65-32-285	1450		28.2							28	27.8	27.5	27	27	26.5	26	15hp/11kw
WXC 65-32-300	1450		31.2							31	30.8	30.5	30.2	30	29.8	29.5	15hp/11kw
WXC 65-32-315	1450		34.5							34.5	34.3	34.2	34	33.7	33.5	33	20hp/15kw
WXC 65-32-329	1450		37.8							37.5	37.3	37	37.6	37	36.8	36.2	20hp/15kw


WXC
Applications

- City Water supply
- Air-Conditioning
- Firefighting System
- Imigation

Material

- Casing -Cast Iron and Ductile Iron standard; Optional Stainless Steel
- Impeller -Bronze standard, optional Cast Iron & Stainless Steel
- Shaft -AISI420 standard, optional AISI304 & AISI316
- Shaft Seal -MechanicalSeal Standard
Carbon-Sic / Vinton(optional)
Ortional Gland Packing

1450pm

Cat.	Speed (rpm)	Q (Flow Rate)													Max. Motor hp/kw	
		ℓ/min m3/h	0	618	668	735	785	835	902	1086	1336	1670	1837	2004		
WXC 80-16-135	1450	7.7	7.6	7.5	7.5	7.45	7.4	7.3	7	6.4						3.0hp/2.2kw
WXC 80-16-145	1450	8.4	8.3	8.3	8.3	8.2	8.1	8	7.8	7						3.0hp/2.2kw
WXC 80-16-155	1450	9.2	9	9	9	8.9	8.8	8.7	8.5	7.8						4.0hp/3.0kw
WXC 80-16-165	1450	10	9.8	9.8	9.8	9.7	9.7	9.7	9.3	8.7						4.0hp/3.0kw
WXC 80-16-174	1450	10.5	10.65	10.5	10.5	10.45	10.4	10.3	10.1	9.5						5.0hp/4.0kw
WXC 80-20-175	1450	10.3		9.8	9.7	9.6	9.55	9.5	9.3	8.5	7					4.0hp/3.0kw
WXC 80-20-185	1450	11.5		11	11	10.9	10.85	10.8	10.4	9.8	8.4					5.5hp/4.0kw
WXC 80-20-195	1450	12.8		12.4	12.2	12.1	12	12	11.8	11.1	9.8					7.5hp/5.5kw
WXC 80-20-205	1450	14.2		13.7	13.6	13.5	13.4	13.3	13	12.4	11.3					7.5hp/5.5kw
WXC 80-20-214	1450	15.5		15	14.8	14.6	14.55	14.5	14.3	13.6	12.6					10hp/7.5kw
WXC 80-26-225	1450	18			17.9	17.8	17.7	17.6	17.2	16.5	14.8	13.5				7.5hp/5.5kw
WXC 80-26-235	1450	19.6				19.5	19.4	19.3	19.2	19	18.2	16.8	15.5			10hp/7.5kw
WXZ 80-26-245	1450	21.5					21.2	21	21.2	21	20	18.5	17.5			15hp/11kw
WXC 80-26-255	1450	23.1					23.1	23	22.9	22.8	22.5	22	20.5	19.3		15hp/11kw
WXC 80-26-264	1450	24.8					24.8	24.7	24.6	24.5	24	23.7	22	21.2		15hp/11kw
WXC 80-32-270	1450	24						23.5	23.4	23.3	23.1	23	22	21.2		15hp/11kw
WXC 80-32-285	1450	27						26.6	26.5	26.4	26.2	26	25	24.1		15hp/11kw
WXC 80-32-300	1450	30.8						30.3	30.2	30.1	30	29.5	28.4	27.5		20hp/15kw
WXC 80-32-315	1450	34						33.5	33.4	33.3	33	32.7	31.5	30.8		25hp/18.5kw
WXC 80-32-329	1450	37.8						37.4	37.3	37.2	37	36.8	36	35		25hp/18.5kw
WXC 80-40-350	1450	42							41.2	41	40	38	34.2	31.2	27.1	25hp/18.5kw
WXC 80-40-365	1450	45.5							45	44.7	43.5	41.5	38	35.8	32	30hp/22kw
WXC 80-40-380	1450	49.2							48.8	48.5	47.5	45.6	42.2	40.2	36	30hp/22kw
WXC 80-40-395	1450	53.2							52.8	52.5	51.7	49.5	46.2	43.4	40.1	40hp/30kw
WXC 80-40-409	1450	57							56.8	56.5	55.7	53.8	50.2	48.2	46	40hp/30kw

Cat.	Speed (rpm)	Q (Flow Rate)													Max. Motor hp/kw			
		ℓ/min m3/h	0	785	835	969	1086	1336	1503	1670	2004	2171	2338	2505		2839		
WXC 100-16-174	1450	8.7	8.8	8.71	8.6	8.25	7.6	7.2	6.7							4.0hp/3.0kw		
WXC 100-16-180	1450	9.22	9.8	9.3	9.1	8.85	8.3	7.7	7.2							5.5hp/4.0kw		
WXC 100-20-175	1450	11.2		11.1	11	10.8	10.5	10.2	9.8	8.8	8					5.5hp/4.0kw		
WXC 100-20-185	1450	12.6		12.4	12.3	12.2	11.8	11.5	11.2	10.2	9.5					7.5hp/5.5kw		
WXC 100-20-195	1450	14		13.8	13.7	13.6	13.3	13	12.6	11.8	11.2					10hp/7.5kw		
WXC 100-20-205	1450	15.4		15.3	15.2	15.1	14.7	14.5	14.2	13.2	12.6					10hp/7.5kw		
WXC 100-20-214	1450	17		16.8	16.7	16.6	16.2	16	15.6	14.6	14.1					15hp/11kw		
WXC 100-26-225	1450	18			18	18	18	18	17.6	17	16.8	16.2				15hp/11kw		
WXC 100-26-235	1450	19.5			20	20	19.9	19.7	19.3	18.9	18.5	18				15hp/11kw		
WXC 100-26-245	1450	21.2				21.8	21.8	21.5	21.4	21.2	20.8	20.3	20			20hp/15kw		
WXC 100-26-255	1450	23					23.3	23.4	23.4	23.2	23	22.6	22.2	22		20hp/15kw		
WXC 100-26-264	1450	24.7						25.1	25.2	25	24.9	24.8	24.2	24	23.7	25hp/18.5kw		
WXC 100-32-270	1450	25.5							25.4	25.1	24.8	24.5	23	22.5	21.2	19.7	20hp/15kw	
WXC 100-32-285	1450	28.5							28.5	28.1	27.8	27.5	26.5	26	24.7	23	20hp/15kw	
WXC 100-32-300	1450	31.7							31.7	31.5	31.2	31	29.5	28.8	28.3	27	25hp/18.5kw	
WXC 100-32-315	1450	34.3							35	34.9	34.2	34	33	32.5	32	30.7	30hp/22kw	
WXC 100-32-329	1450	37.8							38	37.9	37.5	37.2	36.2	35.8	34.5	33.5	30hp/22kw	
WXC 100-40-350	1450	41.2							41.2	40.8	40	39	38	37.5	36	35	31	30hp/22kw
WXC 100-40-365	1450	44.8							44.8	44.5	44	43	42	41.5	40	38.5	35	40hp/30kw
WXC 100-40-380	1450	48.5							48.5	48	47.8	47	46	45	44	43	39	50hp/37kw
WXC 100-40-395	1450	52.2							52.2	52.1	52	51	50	49	48	47	43.8	50hp/37kw
WXC 100-40-409	1450	56							56.2	56	55.8	54.8	53.8	53.1	52	50.8	48	60hp/45kw

WXC Long Coupled Single Stage Pumps

Series WXC Pumps are designed and manufactured to the European Standard DIN 24255. This is a Bare Shaft Version. The design advantage is that the pump can be fitted with IEC standard electric motors easily. This provides a wide range of motor selection.



WXC

1450rpm

Cat.	Speed (rpm)	Q (Flow Rate)													Max. Motor hp/kw			
		l/min m3/h	0	1336	1503	1837	2004	2171	2338	2505	2839	3507	3674	4092				
WXC 125-20-175	1450		10.2	10	9.8	9.8	9.5	9.4	9	8.7								10hp/7.5kw
WXC 125-20-185	1450		11.3	11.2	11	11	10.8	10.7	10.5	10								10hp/7.5kw
WXC 125-20-195	1450		12.6	12.4	12.3	12.3	12.1	12	11.8	11.5								15hp/11kw
WXC 125-20-205	1450		13.9	13.6	13.6	13.6	13.5	13.4	13.2	12.9								15hp/11kw
WXC 125-20-214	1450		15.2	14.9	14.8	14.8	14.7	14.6	14.4	14.2								15hp/11kw
WXC 125-26-225	1450		17		17.3	17.3	17	16.9	16.8	16.7	16.5							20hp/15kw
WXC 125-26-235	1450		18.5		18.8	18.8	18.8	18.7	18.6	18.5	18.3							20hp/15kw
WXC 125-26-245	1450		20.2		20.5	20.5	20.5	20.4	20.3	20.2	20							30hp/22kw
WXC 125-26-255	1450		21.9		22.2	22.2	22.2	22.1	22	22	21.9							40hp/30kw
WXC 125-26-264	1450	H	23.5		23.8	23.8	23.8	23.7	23.6	23.6	23.3							40hp/30kw
WXC 125-32-270	1450	(m)	24.2			23.2	23	22.6	22.5	22.2	21.8	20.2						25hp/18.5kw
WXC 125-32-285	1450		27			26	25.8	25.4	25.2	25	24.5	23.2						30hp/22kw
WXC 125-32-300	1450		30			29	28.5	28.2	28	27.6	27.3	26.2						30hp/22kw
WXC 125-32-315	1450		33			32	31.8	31.5	31	30.8	30.2	29						40hp/30kw
WXC 125-32-329	1450		36.1			35	35.8	34.5	34.2	34	33.5	32.1						40hp/30kw
WXC 125-40-350	1450		42				40	40	39.8	39	38	35.5	33	31				50hp/37kw
WXC 125-40-365	1450		46					44.1	44	44	43.5	43	41.3	39.2	37.5			60hp/45kw
WXC 125-40-380	1450		49.5					48	48	47.8	47.5	47	46	44	43.8			75hp/55kw
WXC 125-40-395	1450		53.5					52	52	52	51.8	51.5	50.8	49.5	48			75hp/55kw
WXC 125-40-400	1400		57.5					56.8	56.5	56.2	56	55.8	55	54	53.2			100hp/75kw

Cat.	Speed (rpm)	Q (Flow Rate)																Max. Motor hp/kw
		l/min m3/h	0	1837	2004	2171	2338	2505	2839	3507	3674	4092	4509	5010	5678	6346	7181	
WXC 150-20-175	1450		8.4	8.8	8.8	8.8	8.8	8.85	8.7	8.55	8.5	8.4	8	7.6				15hp/11kw
WXC 150-20-185	1450		9.4	9.8	9.8	9.8	9.8	9.75	9.7	9.65	9.5	9.3	9	8.8				15hp/11kw
WXC 150-20-195	1450		10.3	11	11	11	10.9	10.8	10.7	10.6	10.5	10.4	10.3	10				20hp/15kw
WXC 150-20-205	1450		11.8	12.2	12.2	12.2	12.3	12.3	12.2	12.2	12.1	12	11.9	11.6				25hp/18.5kw
WXC 150-20-214	1450		12.7	13.4	13.4	13.4	13.5	13.5	13.5	13.4	13.3	13.2	13	12.6				25hp/18.5kw
WXC 150-26-225	1450		16.2		16.4	16.5	16.5	16.5	16.5	16.45	16.3	15.8	15	13.8				25hp/18.5kw
WXC 150-26-235	1450		17.8		17.9	17.95	17.95	17.9	17.9	17.9	17.8	17.6	17.2	17	15.6			25hp/18.5kw
WXC 150-26-245	1450		19.2		19.4	19.5	19.5	19.6	19.6	19.6	19.4	19.2	18.6	17.3				30hp/22kw
WXC 150-26-255	1450		20.8		21	21	21	21	21	21.1	21.2	21.1	20.8	20.3	19.5			40hp/30kw
WXC 150-26-264	1450	H	22.2		22.4	22.5	22.5	22.6	22.6	22.7	22.6	22.5	22.1	21				40hp/30kw
WXC 150-32-270	1450	(m)	24.3				24.8	24.8	24.6	24.5	24.2	23.9	23	22.5	21	19.5		40hp/30kw
WXC 150-32-285	1450		27.2				27.5	27.5	27.5	27.4	27.3	27	26.5	25.8	24	22.5		50hp/37kw
WXC 150-32-300	1450		30				30.2	30.25	30.3	30.2	30	29.9	29.5	28.8	27.5	26		60hp/45kw
WXC 150-32-315	1450		33				33.2	33.25	33.2	33.1	33	32.8	32.6	32	30.8	29		60hp/45kw
WXC 150-32-329	1450		36				36.2	36.25	36.5	36.5	36.3	36.1	35.9	35.2	34	32.5		75hp/55kw
WXC 150-40-350	1450		40					40.7	40.4	40	39.8	39	38.2	37	35.6	33.1	29.5	75hp/55kw
WXC 150-40-365	1450		43.8					44	43.8	43.5	43.2	42.9	42	41	39.5	37.1	34	75hp/55kw
WXC 150-40-380	1450		47.2					48	47.8	47.1	47	46.5	45.9	44.8	43.5	41.2	38	100hp/75kw
WXC 150-40-395	1450		51					51.8	51.5	51	50.9	50.3	49.8	48.8	47.5	45.5	42.5	100hp/75kw
WXC 150-40-409	1450		55					55.5	55.3	55	54.9	54.2	53.6	52.5	51.2	49.2	46.8	120hp/90kw


WXC
Applications

- City Water supply
- Air-Conditioning
- Firefighting System
- Imigation

Material

- Casing -Cast Iron and Ductile Iron standard; Optional Stainless Steel
- Impeller -Bronze standard, optional Cast Iron & Stainless Steel
- Shaft -AISI420 standard, optional AISI304 & AISI316
- Shaft Seal -MechanicalSeal Standard
Carbon-Sic / Vinton(optional)
Ortional Gland Packing

1450pm

Cat.	Speed (rpm)	Q (Flow Rate)												Max. Motor hp/kw	
		ℓ/min	0	2505	2839	3674	4092	4509	5010	5678	6346	7181	7849		8851
		m3/h	0	150	170	220	245	270	300	340	380	430	470		530
WXC 200-26-260	1450	18.3	18.7	17.5	17.1	16.7	16.3	15.7	14.8	13.9	12.5				30hp/22kw
WXC 200-26-275	1450	20.4	19.8	19.7	19.3	19	18.5	17.9	16.7	16.4	14.7				40hp/30kw
WXC 200-26-288	1450	22.5	21.6	21.5	21.2	20.8	20.5	20	19.3	18.2	17				40hp/30kw
WXC 200-32-270	1450	24	23.8	23.5	23	22.8	22.5	21.8	21	20.1	19.8				50hp/37kw
WXC 200-32-285	1450	26.5	26.4	26.2	26	25.7	25.2	25.6	24	23	22.3				50hp/37kw
WXC 200-32-300	1450	29.6	29.5	29.1	29	28.5	28	27.5	26.9	26	25.3				60hp/45kw
WXC 200-32-315	1450	32.5	32.5	32.2	32	31.7	31.3	30.6	30	29	28.5				75hp/55kw
WXC 200-32-329	1450	35.5	35.4	35.2	35	34.6	34.2	33.6	33	32	31				100hp/75kw
WXC 200-40-350	1450	41.2		41.3	41.3	41.2	41.5	41.7	41.8	41.2	40.3	37			75hp/55kw
WXC 200-40-365	1450	44.8		45	45	45	45	45	45	45	44.5	42			100hp/75kw
WXC 200-40-380	1450	48.5		48.6	48.6	48.7	48.8	49	49	49	48.7	46.8			120hp/90kw
WXC 200-40-395	1450	52.4		52.5	52.4	52.5	52.6	52.7	53	53	52.8	51.5			120hp/90kw
WXC 200-40-409	1450	56.2		56.3	56.3	56.2	56.2	56.5	56.8	57	56.8	56			150hp/110kw

Cat.	Speed (rpm)	Q (Flow Rate)											Max. Motor hp/kw	
		ℓ/min	0	5010	5678	6346	7181	7849	8851	9686	10521	11356		
		m3/h	0	300	340	380	430	470	530	580	630	680		
WXC 250-32-285	1450	23	23.8	23.7	23.6	23.5	23	22.7	22.2	22				75hp/55kw
WXC 250-32-300	1450	25.5	26	26.1	26	25.9	25.7	25.2	24.8	24				100hp/75kw
WXC 250-32-315	1450	28.2	29	29	28.8	28.6	28.3	28	27.8	27				100hp/75kw
WXC 250-32-329	1450	30.8	31.9	31.8	31.6	31.4	31	30.8	30	29.5				150hp/90kw
WXC 250-40-350	1450	36.2		37	36.5	36	35.5	34.3	34	32.7	31.8			100hp/75kw
WXC 250-40-365	1450	39.5		40.5	40	39.2	39	37.8	37.5	36.2	35.3			120hp/90kw
WXC 250-40-380	1450	43		44	43.5	43	42.5	41.2	41	40	39			150hp/110kw
WXC 250-40-395	1450	48.2		47.6	47.3	46.5	46	45	44.5	43.8	42.8			150hp/110kw
WXC 250-40-409	1450	49.7		51.2	51	50	49.6	48.5	48	47.1	46.2			175hp/132kw

Mono CXDE-CXE Booster Set

Electronic Stable Pressure Booster

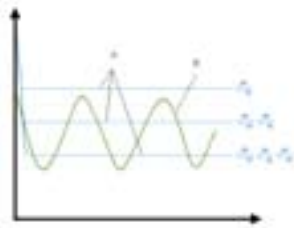
Specifications:

- Mono CXE Pump
- Material for all wet parts: SS304 or SS316
- Applications: Domestic Water Supply, Small Scale Commercial use such as barber shop, small restaurant etc.
- Product Specifications:
 - Capacity:
 - Head:
 - Max Working Pressure: 8 Bar
 - Motor:
 - ◆ Single Phase: 1x220V, 50hz
 - ◆ Three Phase: 2x220/380V, 50hz
 - ◆ Output Power: 0.37kw-0.75kw
 - ◆ Insulation: F Class
 - ◆ Protection Class: IP55
 - ◆ Noise < 60dBA

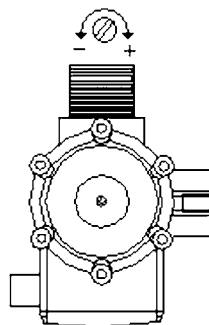


50HZ

Input Voltage		Power		Moter			1/min 0	20	40	60	80	100	120	140	160	180	
1 x 220V 1 x 50Hz	3 x 380V 3 x 50Hz	Kw	Hp	1x 220V	3x 220V	3x 380V	m³/h 0	1.2	2.4	3.6	4.8	6.0	7.2	8.4	9.6	10.8	
CXDE70/037	CXDE70/037	0.37	0.5	2.90	1.65	0.95	H (m)	16	15	13.5	13	11.5	10				
CXDE70/055	CXDE70/055	0.55	0.75	4.00	2.06	1.09		19	18	17	16	15	14				
CXDE70/075	CXDE70/075	0.75	1.0	5.10	3.12	1.80		25	24	22.5	22	20	19				
CXDE70/090	CXDE70/090	0.90	1.2	5.45	3.62	2.09		29	28	27	26	24	23				
CXDE70/110	CXDE70/110	1.10	1.5	6.80	4.50	2.60		33	32	31	30	28.5	27				
CXDE120/75	CXDE120/75	0.75	1.0	5.10	3.12	1.80		19	17.5	17	15.8	15	14	12	11		
CXDE120/110	CXDE120/110	1.10	1.5	6.80	4.50	2.60		26	25	24	23	22	21	20	18		
CXDE120/150	CXDE120/150	1.50	2.0	8.95	5.78	3.34		31	30	29	28	27	25	24	21		
CXDE120/185	CXDE120/185	1.85	2.5	11.80	6.86	3.96		37	35.5	34	33	32	30	28	25		
2CXDE70/150	2CXDE70/150	1.50	2.0	8.95	5.78	3.34		54	52	50	47	43					
2CXDE70/185	2CXDE70/185	1.85	2.5	11.80	6.86	3.96		61	58	56	52	48					



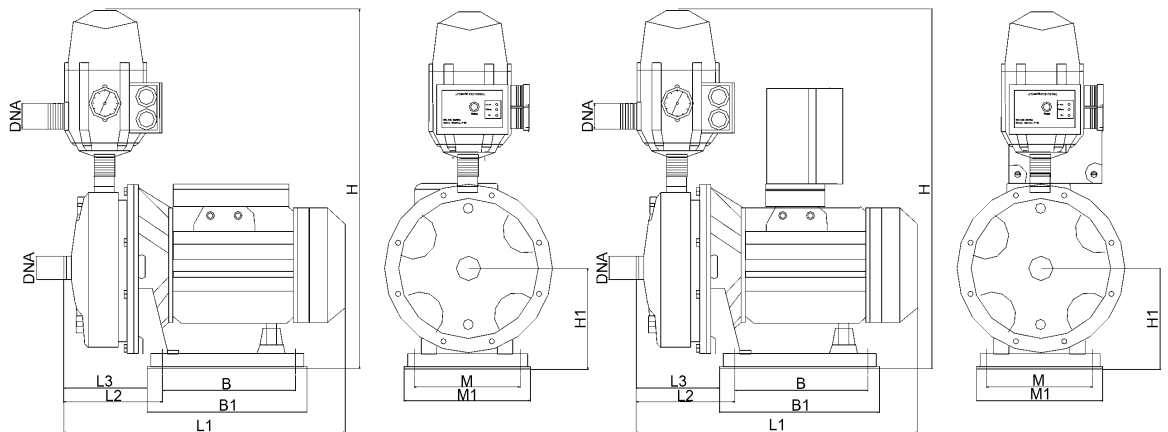
- Power ● Green
- Reset ● Orange
- Failure ● Pink
- On ● Yellow



• Electronic Stable Pressure Device

- Power Supply: 1x220V, 50hz
- Protection Class: IP65
- Max Working Pressure: 10 Bar
- Material: Non-toxic composite suitable for drinking water
- Max Liquid Temp: 60°C
- Pressure Gauge: 0-10 Bar
- Starting Pressure Setting: 1.5 – 3.0 Bar
- Min Pressure Difference: 0.8 Bar
- LED indicator for “ Power “ ; “ Failure “ and “ ON “
- Certificate: UL , CE

Dimensions

CDEX 2/4
CXE 2/4


Cat		Dimensions (mm)										PUMP		Wt. Kg
1Ø	3Ø	L1	L2	L3	H	H1	B	B1	M	M1	IN DNA	OUT DNM		
CXDE70/037	CXDE70/037	315	75	58	460	125	174	212	130	108	G1"1/4	G1"	9.1	
CXDE70/055	CXDE70/055	315	75	58	460	125	174	212	130	108	G1"1/4	G1"	9.8	
CXDE70/075	CXDE70/075	315	75	58	460	125	174	212	130	165	G1"1/4	G1"	11	
CXDE70/090	CXDE70/090	315	75	58	460	125	174	212	130	165	G1"1/4	G1"	14.6	
CXDE70/110	CXDE70/110	370	75	58	460	125	174	212	130	165	G1"1/4	G1"	15.6	
CXDE120/75	CXDE120/75	315	75	58	460	125	174	212	130	165	G1"1/4	G1"	11	
CXDE120/110	CXDE120/110	370	75	58	460	125	174	212	130	165	G1"1/4	G1"	12.6	
CXDE120/150	CXDE120/150	370	75	58	460	125	174	212	130	165	G1"1/4	G1"	16.8	
CXDE120/185	CXDE120/185	370	75	58	460	125	174	212	130	165	G1"1/4	G1"	18	
2CXDE70/150	2CXDE70/150	416	112	95	482	137	174	212	130	165	G1"1/4	G1"	12.6	
2CXDE70/185	2CXDE70/185	416	112	95	482	137	174	212	130	165	G1"1/4	G1"	16	

Mono VMF Booster Set

Variable Frequency Constant Pressure Booster – MVI Pump

Specifications:

- Mono MVI Vertical Multistage Pump
- Material for all Wet Parts: SS304 or SS316
- Capacity: 1-12 m³/hr
- Head: 13-224M
- Max Working Pressure: 25 Bar
- Liquid Temp Range: -15°C- 120°C
- Power Supply: 1x220V, 3x220/380V, 50hz
- Motor:
 - TEFC, IP55, F Class,
 - Horsepower: 0.75kw-7.5kw



50HZ

Functions:

- Constant Pressure control by frequency converter
- Quiet and Non Water Hammer operation. Built in PI control function to control the pump in soft start and stop to prevent water hammer; to control the speed increase and decrease gradually to prevent the noise in sudden speed change
- System Stop automatically when no use of water. When the system detect no use of water, motor will reduce the speed in 10%, after 10sec, the system will stop the pump operation
- Dry Running Protection. When the pump running in full speed, but the pressure is still 50% under setting point. After 30sec, the system will shut down the power to prevent the damage of pump. Need to reset the system, then the pump can be restarted in 10sec.
- Motor Protection Functions: High / Low voltage; Over current, Overloading; Overheating; phase failure; grounding failure.

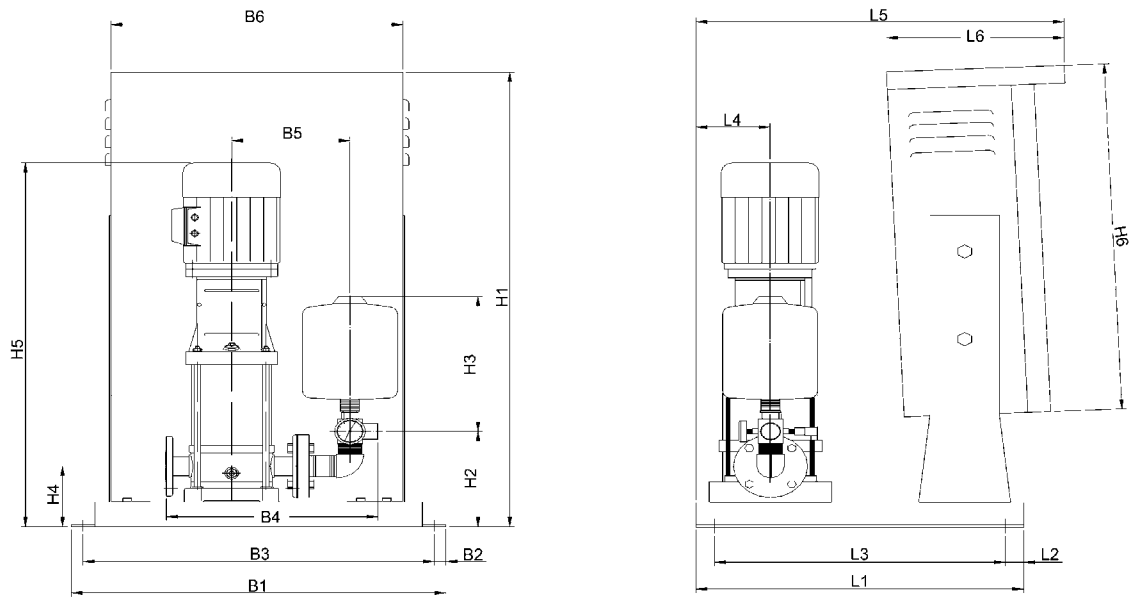
Material Specifications:

- Frequency Converter: Danfoss or Equivalent
- HY-PO: Japanese Controller
- Pressure Transmitter: Danfoss: 0-10 Bar or 4-20mA
- Pressure Tank: IPP Diaphragm Tank
- 5 way Valve with non-return valve: SS304
- Control Panel: 2.5mm thick steel plate with powdered painting

VMF2

2900rpm

Input Voltage 220-240V/380-460V 50Hz	Power		l/min m ³ /h	16.7	25	33.3	41.7	50	58.3
	Kw	Hp		1.0	1.5	2.0	2.5	3.0	3.4
VMF2-20	0.37	0.5	H (m)	17	16	15	14	13	11
VMF2-30	0.55	0.75		25	24	34	32	29	27
VMF2-40	0.55	0.75		32.5	31	46	42	38	34
VMF2-50	0.55	0.75		41	39	57	52	48	42
VMF2-60	0.75	1.0		52	50	47	43	39	33
VMF2-90	1.1	1.5		78	74	69	63	58	46
VMF2-110	1.1	1.5		96	91	85	80	72	57
VMF2-130	1.5	2.0		112	107	100	90	81	69
VMF2-150	1.5	2.0		130	124	114	104	93	77
VMF2-180	2.2	3.0		156	149	138	125	100	92
VMF2-220	2.2	3.0		185	173	165	150	121	100
VMF2-260	3.0	4.0		218	103	194	176	150	120

Dimensions


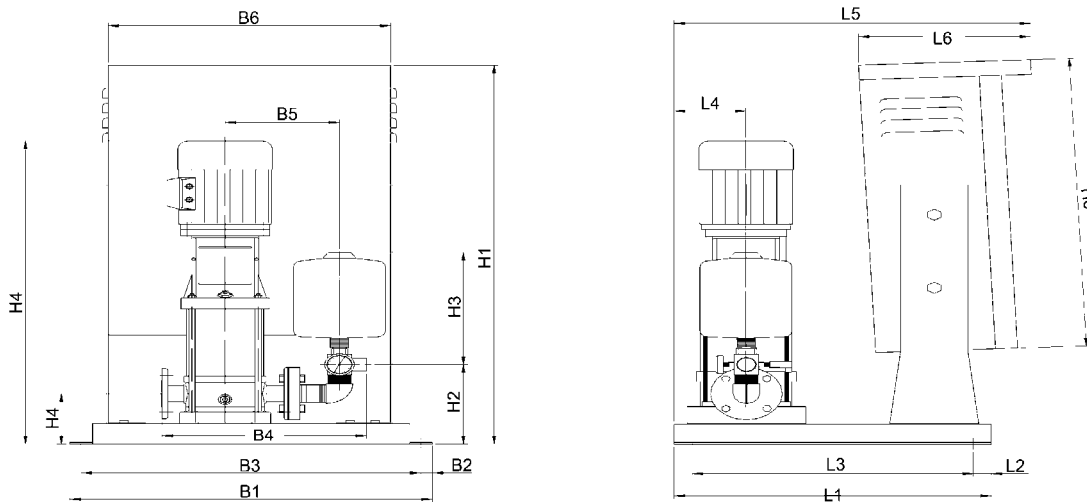
Cat	Dimensions (mm)																	PUMP		Pressure Tanl	Wt. Kg	
	L1	L2	L3	L4	L5	L6	B1	B2	B3	B4	B5	B6	H1	H2	H3	H4	H5	H6	IN			OUT
																			DNA			DNM
VMF2-20	500	30	440	130	500	230	480	15	450	400	220	400	920	205	350	135	558	600	1"	1"	8L	88
VMF2-30	500	30	440	130	500	230	480	15	450	400	220	400	920	205	350	135	576	600	1"	1"	8L	90
VMF2-40	500	30	440	130	500	230	480	15	450	400	220	400	920	205	350	135	621	600	1"	1"	8L	93
VMF2-50	500	30	440	130	500	230	480	15	450	400	220	400	920	205	350	135	639	600	1"	1"	8L	95
VMF2-60	500	30	440	130	500	230	480	15	450	400	220	400	920	205	350	135	662	600	1"	1"	8L	95
VMF2-90	500	30	440	130	500	230	480	15	450	400	220	400	920	205	350	135	716	600	1"	1"	8L	97
VMF2-110	500	30	440	130	500	230	480	15	450	400	220	400	920	205	350	135	752	600	1"	1"	8L	98
VMF2-130	500	30	440	130	500	230	580	15	580	400	220	500	1020	205	350	135	848	700	1"	1"	8L	104
VMF2-150	500	30	440	130	500	230	580	15	580	400	220	500	1020	205	350	135	884	700	1"	1"	8L	105
VMF2-180	500	30	440	130	500	230	580	15	580	400	220	500	1020	205	350	135	938	700	1"	1"	8L	108
VMF2-220	500	30	440	130	500	230	580	15	580	400	220	500	1020	205	350	135	990	700	1"	1"	8L	108
VMF2-260	500	30	440	130	500	230	580	15	580	400	220	500	1020	205	350	135	1122	700	1"	1"	8L	115

VMF4

2900rpm

Input Voltage 220-240V/380-460V 50Hz	Power		l/min m³/h	33.3	50	66.7	83.3	100	116.7	133.3
	Kw	Hp		2	3	4	5	6	7	8
VMF4-20	0.55	0.75	H (m)	17	16.5	15.5	14.58	13	11	5
VMF4-30	0.75	1.0		26	25	24	22.5	20	17.5	7.5
VMF4-40	0.75	1.0		35	33.5	32	29.5	26.5	23	10
VMF4-50	1.1	1.5		43	40	37	33	28	20	11.5
VMF4-60	1.1	1.5		53	50	47	42	33	24	13
VMF4-80	1.5	2.0		70	66.5	61	54	46	32	21
VMF4-100	2.2	3.0		86	80	74	66	56	41	23
VMF4-120	2.2	3.0		105	99	91	82	68	47	27
VMF4-140	3.0	4.0		123	116	106	93	79	56	29
VMF4-160	3.0	4.0		142	133	122	111	94	67	34
VMF4-190	4.0	5.5		172	160	148	134	115	89	47
VMF4-220	4.0	5.5		190	177	163	142	119	91	60

Dimensions



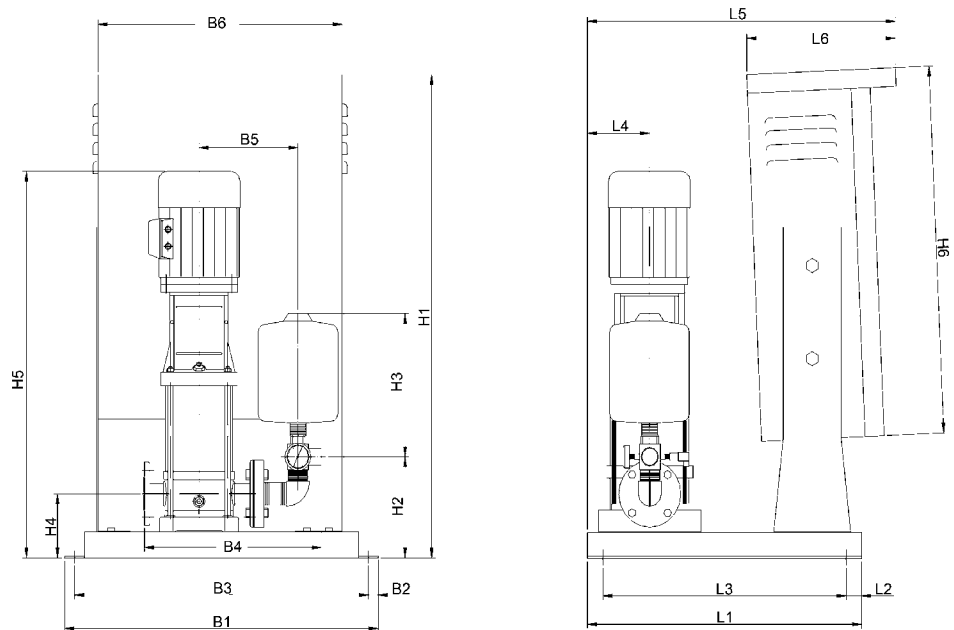
Cat	Dimensions (mm)																			PUMP		Pressure Tanl	Wt. Kg
	L1	L2	L3	L4	L5	L6	B1	B2	B3	B4	B5	B6	H1	H2	H3	H4	H5	H6	IN DNA	OUT DNM			
	VMF4-20	500	30	440	130	500	230	480	15	450	415	220	400	920	240	380	135	558	600	1 1/4"	1 1/4"		
VMF4-30	500	30	440	130	500	230	480	15	450	415	220	400	920	240	380	135	625	600	1 1/4"	1 1/4"	8L	92	
VMF4-40	500	30	440	130	500	230	480	15	450	415	220	400	920	240	380	135	662	600	1 1/4"	1 1/4"	8L	94	
VMF4-50	500	30	440	130	500	230	480	15	450	415	220	400	920	240	380	135	689	600	1 1/4"	1 1/4"	8L	95	
VMF4-60	500	30	440	130	500	230	480	15	450	415	220	400	920	240	380	135	716	600	1 1/4"	1 1/4"	8L	95	
VMF4-80	500	30	440	130	500	230	580	15	550	415	220	500	1020	240	380	135	830	700	1 1/4"	1 1/4"	8L	103	
VMF4-100	500	30	440	130	500	230	580	15	550	415	220	500	1020	240	380	135	884	700	1 1/4"	1 1/4"	8L	107	
VMF4-120	500	30	440	130	500	230	580	15	550	415	220	500	1020	240	380	135	938	700	1 1/4"	1 1/4"	8L	108	
VMF4-140	500	30	440	130	500	230	580	15	550	415	220	500	1020	240	380	135	99	700	1 1/4"	1 1/4"	8L	117	
VMF4-160	500	30	440	130	500	230	580	15	550	415	220	500	1020	240	380	135	1046	700	1 1/4"	1 1/4"	8L	117	
VMF4-190	500	30	440	130	500	230	580	15	550	415	220	500	1020	240	380	135	1127	700	1 1/4"	1 1/4"	8L	124	
VMF4-220	500	30	440	130	500	230	580	15	550	415	220	500	1020	240	380	135	1208	700	1 1/4"	1 1/4"	8L	124	

VMF8

2900rpm

Input Voltage 220-240V/380-460V 50Hz	Power		l/min m ³ /h	83	100	117	133	150	167	183	200
	Kw	Hp		H (m)							
VMF8-30	1.1	1.5	30	29.5	28.5	27	25	24	21	19	
VMF8-40	1.5	2.0	41	39.5	38	36	34	32	28	26	
VMF8-50	2.2	3.0	52	50	48	45	42	40	36	32	
VMF8-60	2.2	3.0	62	60	57	54	51	48	43	39	
VMF8-80	3.0	4.0	83	80	77	73	69	65	58	52	
VMF8-100	4.0	5.5	104	100	97	92	87	81	73	65	
VMF8-120	4.0	5.5	124	120	116	111	104	92	87	78	
VMF8-140	5.5	7.5	145	141	136	130	122	113	102	92	
VMF8-160	5.5	7.5	166	161	156	148	139	130	118	106	
VMF8-180	7.5	10	187	182	175	167	157	146	134	120	
VMF8-200	7.5	10	208	202	195	186	175	163	150	135	

Dimensions



Cat	Dimensions (mm)																		PUMP		Pressure Tanl	Wt. Kg
	L1	L2	L3	L4	L5	L6	B1	B2	B3	B4	B5	B6	H1	H2	H3	H4	H5	H6	IN	OUT		
																			DNA	DNM		
VMF8-30	500	30	440	130	500	230	480	15	450	415	220	400	920	240	380	140	741	600	1 1/2"	1 1/2"	20L	100
VMF8-40	500	30	440	130	500	230	580	15	550	415	220	500	1020	240	380	140	821	700	1 1/2"	1 1/2"	20L	105
VMF8-50	500	30	440	130	500	230	580	15	550	415	220	500	1020	240	380	140	851	700	1 1/2"	1 1/2"	20L	105
VMF8-60	500	30	440	130	500	230	580	15	550	415	220	500	1020	240	380	140	881	700	1 1/2"	1 1/2"	20L	120
VMF8-80	500	30	440	130	500	230	580	15	550	415	220	500	1020	240	380	140	1005	700	1 1/2"	1 1/2"	20L	140
VMF8-100	600	30	540	160	600	290	580	15	550	465	220	500	1020	240	440	140	1103	700	1 1/2"	1 1/2"	20L	150
VMF8-120	600	30	540	160	600	290	580	15	550	465	220	500	1020	240	440	140	1163	700	1 1/2"	1 1/2"	20L	150
VMF8-140	600	30	540	160	600	290	580	15	550	465	220	500	1020	240	440	140	1205	700	1 1/2"	1 1/2"	20L	150
VMF8-160	600	30	540	160	600	290	580	15	550	465	220	500	1020	240	440	140	1265	700	1 1/2"	1 1/2"	20L	150
VMF8-180	600	30	540	160	600	290	580	15	550	465	220	500	1020	240	440	140	1363	700	1 1/2"	1 1/2"	20L	150
VMF8-200	600	30	540	160	600	290	580	15	550	465	220	500	1020	240	440	140	1423	700	1 1/2"	1 1/2"	20L	150

Mono HSF Booster Set

Variable Frequency Constant Pressure Booster – ASG Pump

Specifications:

- Mono ASG Close Coupled Pump
- Material for all Wet Parts: SS304 or SS316
- Capacity: 3-72 m³/hr
- Head: 6-55M
- Max Working Pressure: 10 Bar
- Liquid Temp Range: -15°C- 110°C
- Motor:
 - Power Supply: 3x220/380V, 50hz
 - TEFC, IP55, F Class,
 - Horsepower: 0.75kw-7.5kw
 - Noise: 60dBA

Functions:

- Constant Pressure control by frequency converter
- Quiet and Non Water Hammer operation. Built in PI control function to control the pump in soft start and stop to prevent water hammer; to control the speed increase and decrease gradually to prevent the noise in sudden speed change
- System Stop automatically when no use of water. When the system detect no use of water, motor will reduce the speed in 10%, after 10sec, the system will stop the pump operation
- Dry Running Protection. When the pump running in full speed, but the pressure is still 50% under setting point. After 30sec, the system will shut down the power to prevent the damage of pump. Need to reset the system, then the pump can be restarted in 10sec.
- Motor Protection Functions: High / Low voltage; Over current, Overloading; Overheating; phase failure; grounding failure.

Material Specifications:

- Frequency Converter: Danfoss or Equivalent
- HY-PO: Japanese Controller
- Pressure Transmitter: Danfoss: 0-10 Bar or 4-20mA
- Pressure Tank: IPP Diaphragm Tank
- Pipes, fittings and 5 way Valve with non-return valve: SS304
- Control Panel: 2.5mm thick steel plate with powdered painting

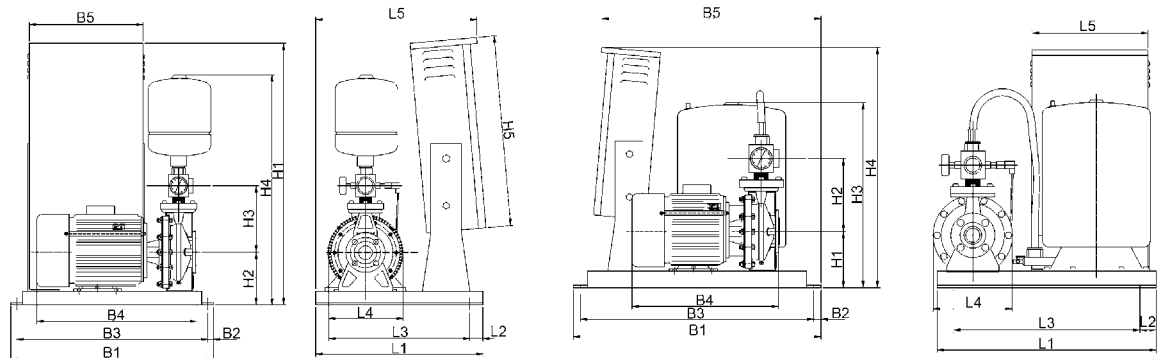


50HZ

HSF

2900rpm

Input Voltage 380V 50Hz	Power		l/min m³/h	50	100	150	200	250	300	333	400	450	500	550	600	650	700	800	1000	1200
	Kw	Hp		3.0	6.0	9.0	12	15	18	20	24	27	30	33	36	39	42	48	60	72
HSF 50-32-125 2.2	2.2	3.0		21	20.5	20	19	17.5	16.5	15	11									
HSF 50-32-160 2.2	2.2	3.0		26	25.5	25	24	23.5	21.5	20	18									
HSF 50-32-160 3.0	3.0	4.0		35	34	33	32	31	30	29	27									
HSF 50-32-200 4.0	4.0	5.5		40.5	40	38.5	37.5	36	34	33	30									
HSF 50-32-200 5.5	5.5	7.5		50	49.5	49	48.5	48	47.5	47	44.5									
HSF 65-40-125 2.2	2.2	3.0					15.5	15	14.5	14	13	12	11	10	8	6				
HSF 65-40-125 3.0	3.0	4.0					21.8	21.5	21.3	21.1	20.7	20.2	19.5	18.4	16	14.5	12.5			
HSF 65-40-160 4.0	4.0	5.5					28.5	28	27.4	27.1	26.3	25.4	24.3	22.9	21.3	20.5	19			
HSF 65-40-160 5.5	5.5	7.5					36	35	34.5	33.8	33	32	31.5	31	30.5	29.8	29			
HSF 65-40-200 7.5	7.5	10					44.5	43.5	42.5	42	41.8	41	40	38.5	37	35	33			
HSF 65-40-200 9.2	9.2	12.5					53.5	52.8	52	51.5	51	50.5	50	49.5	49	47	45.5			
HSF 65-50-125 4.0	4.0	5.5									21.6	21.2	20.5	20	19.2	18.2	17.5	15.5	11	8
HSF 65-50-125 5.5	5.5	7.5									25.6	25.4	24.9	24.5	23.8	23.3	22.6	21	19	14
HSF 65-50-160 7.5	7.5	10									30	29.8	29.5	28.8	28	27	26.5	24.8	23	19
HSF 65-50-160 9.2	9.2	12.5									37	36.5	36	35.3	34.5	34	33.8	32	30	27.5
HSF 65-50-200 11.0	11	15									52	51	50	49.5	49	47.5	48	46	41	33
HSF 65-50-200 15.0	15	20									55	54.8	54.5	54.3	54	53.5	53	51	46.8	40

Dimensions


Cat	Dimensions (mm)															PUMP		Pressure Tanl
	L1	L2	L3	L4	L5	B1	B2	B3	B4	B5	H1	H2	H3	H4	H5	IN DNA	OUT DNM	
HSF 50-32-125 2.2	550	30	490	244	550	620	15	590	492	400	900	192	215	832	600	50	1 1/2"	20L
HSF 50-32-160 2.2	550	30	490	244	550	620	15	590	492	400	900	192	215	832	600	50	1 1/2"	20L
HSF 50-32-160 3.0	550	30	490	244	550	620	15	590	481	400	900	192	215	832	600	50	1 1/2"	20L
HSF 50-32-200 4.0	550	30	490	295	550	620	15	590	519	400	900	220	215	832	600	50	1 1/2"	20L
HSF 50-32-200 5.5	820	50	720	295	400	730	15	700	582	730	220	285	660	900	/	65	1 1/2"	60L
HSF 65-40-125 2.2	550	30	490	244	550	620	15	590	489	400	900	192	255	852	600	65	1 1/2"	20L
HSF 65-40-125 3.0	550	30	490	244	550	620	15	590	479	400	900	192	255	852	600	65	1 1/2"	20L
HSF 65-40-160 4.0	550	30	490	244	550	620	15	590	479	400	900	192	255	852	600	65	1 1/2"	20L
HSF 65-40-160 5.5	820	50	720	244	400	730	15	700	582	730	192	265	660	900	/	65	1 1/2"	60L
HSF 65-40-200 7.5	920	50	820	295	500	730	15	700	602	730	220	285	660	970	/	65	1 1/2"	60L
HSF 65-40-200 9.2	920	50	820	244	500	730	15	700	641	730	220	285	660	970	/	65	1 1/2"	60L
HSF 65-50-125 4.0	550	30	490	244	550	620	15	590	509	400	900	192	260	902	600	65	2"	20L
HSF 65-50-125 5.5	820	50	720	244	500	730	15	700	612	730	192	265	660	970	/	65	2"	60L
HSF 65-50-160 7.5	920	50	820	244	500	730	15	700	612	730	220	285	660	970	/	65	2"	60L
HSF 65-50-160 9.2	920	50	820	244	500	730	15	700	651	730	220	285	660	970	/	65	2"	60L
HSF 65-50-200 11.0	1020	50	920	413	600	750	15	720	696	750	220	305	660	1000	/	65	2"	60L
HSF 65-50-200 15.0	1020	50	920	413	600	750	15	720	696	750	220	305	660	1000	/	65	2"	60L

2 MXF Booster Set

Variable Frequency Constant – 2x MHE Pump

Specifications:

- Two units of MHE Pump
- Material for all wet parts: SS304
- Applications: Domestic Water Supply, Commercial use such as barber shop, motel, restaurant etc.
- Product Specifications:
 - Capacity:
 - Head:
 - Max Working Pressure: 8 Bar
 - Motor:
 - ◆ Single Phase: 1x220V, 50hz
 - ◆ Three Phase: 2x220/380V, 50hz
 - ◆ Output Power: 0.37kw-0.75kw
 - ◆ Insulation: F Class
 - ◆ Protection Class: IP55
 - ◆ Noise < 60dBA



50HZ

Functions:

- Alternative parallel
- Constant Pressure control by frequency converter
- Quiet and Non Water Hammer operation. Built in PI control function to control the pump in soft start and stop to prevent water hammer; to control the speed increase and decrease gradually to prevent the noise in sudden speed change
- System Stop automatically when no use of water. When the system detect no use of water, motor will reduce the speed in 10%, after 10sec, the system will stop the pump operation
- Dry Running Protection. When the pump running in full speed, but the pressure is still 50% under setting point. After 30sec, the system will shut down the power to prevent the damage of pump. Need to reset the system, then the pump can be restarted in 10sec.
- Alternative fault
- Alternative timing
- Built in RS-232 and RS-485 Communication Protocol
- Panel Display to display the failure signal for trouble shooting
- Motor Protection Functions: High / Low voltage; Over current, Overloading; Overheating; phase failure; ground-ing failure.

Qty	Parts	Description
1 pcs	HY-PO PLC Controller	HY-PO Japanese
2 pcs	Variable Frequency Drive	Danfoss or Equivalant
2psc	Pressure Diaphragm Tank	IPP Pressure Tank
2 pcs	5 Way Valve	SS304
1 pc	Pressure Guage	Max 10 Bar
1 pc	Pressure Transducer	Danfoss or Equivalent
1 set	Pipes, Fittings	SS304
1 pc	Base Plate	Mild Steel with Painting
1 pc	Panel	Mild Steel with Painting

2 MXF2

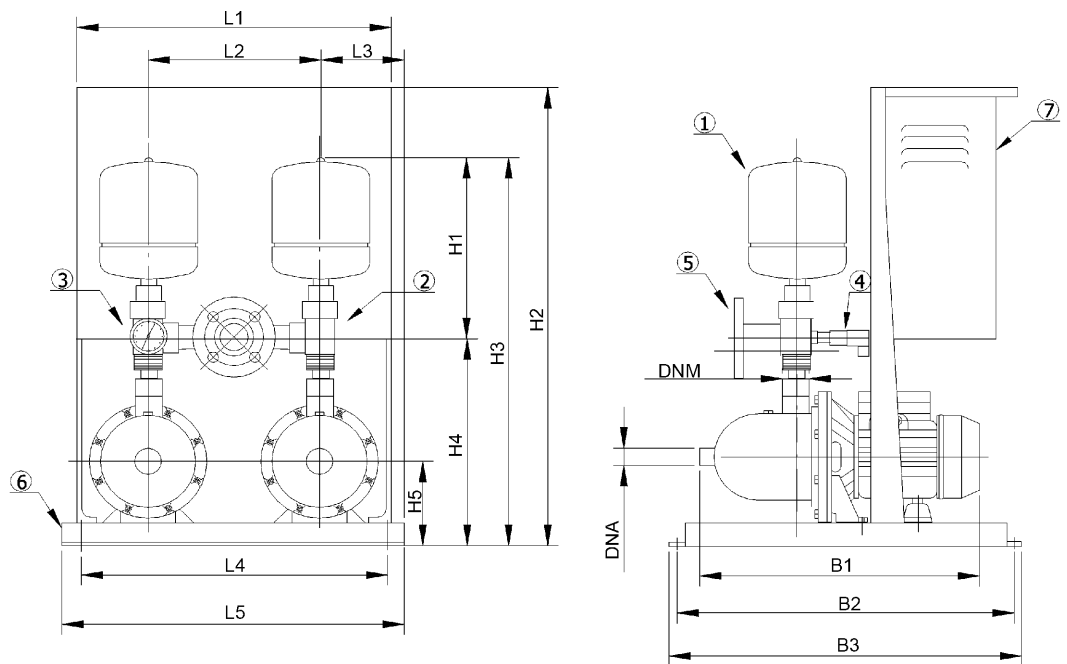
2900rpm

Input Voltage 3x 380V 3x 50Hz	Power		l/min m ³ /h	16.6	33.4	50	66.6	83.4	100	116.6	Pressure setting (Kg/cm ²)
	Kw	Hp		1.0	2.0	30.	4.0	5.0	6.0	7.0	
2MXF2-20/037	0.37	0.5	H (m)	18	17	16	15	14	13	11	0.5-1.6
2MXF2-30/055	0.55	0.75		26	25	24	22.5	21	19	16	0.5-2.4
2MXF2-40/055	0.55	0.75		35	32.5	31	29.5	27.5	25.5	21	0.5-3.2
2MXF2-50/055	0.55	0.75		44	41	39	36.5	34	31	26	0.5-4.0
2MXF2-60/072	0.75	1.0		53	50	47	44	40	36	30	0.5-5.0

2 MXF4

2900rpm

Input Voltage 3x 380V 3x 50Hz	Power		l/min m ³ /h	33.4	66.6	100	133.4	166.6	200	233.4	Pressure setting (Kg/cm ²)
	Kw	Hp		2.0	4.0	6.0	8.0	10	12	14	
2MXF4-20/055	0.55	0.75	H (m)	18	17	16.5	15.5	14.5	13	11	0.5-1.6
2MXF4-30/075	0.75	1.0		27	26	25	24	22.5	20	17.5	0.5-2.5
2MXF4-40/075	0.75	1.0		36	35	33.5	32	29.5	26.5	23	0.5-3.3

Dimensions


Cat	407Dimensions (mm)													PUMP		Pressure Tanl
	L1	L2	L3	L4	L5	H1	H2	H3	H4	H5	B1	B2	B3	IN	OUT	
	DNA	DNM														
2MXF2-20/037	545	305	130	535	565	234	815	500	266	148	353	450	480	G1" 1/4	G1"	11/2"
2MXF2-20/037	545	305	130	535	656	234	815	500	266	148	353	450	480	G1" 1/4	G1"	11/2"
2MXF2-40/055	545	305	130	535	565	234	815	500	266	148	407	450	480	G1" 1/4	G1"	11/2"
2MXF2-50/055	545	305	130	535	565	234	815	500	266	148	407	450	480	G1" 1/4	G1"	11/2"
2MXF2-60/055	545	305	130	535	565	234	815	500	266	148	407	450	480	G1" 1/4	G1"	11/2"
2MXF4-20/055	545	305	130	535	565	234	815	500	266	148	353	450	480	G1" 1/4	G1"	2"
2MXF4-30/075	545	305	130	535	565	234	815	500	266	148	407	450	480	G1" 1/4	G1"	2"
2MXF4-40/075	545	305	130	535	565	234	815	500	266	148	407	450	480	G1" 1/4	G1"	"

2 VMF Booster Set

Variable Frequency Constant – 2x MVI Pump

Specifications:

- Two units of MVI Vertical Multistage Pump
- Material for all Wet Parts: SS304 or SS316
- Capacity: 2-24 m3/hr
- Head: 13-224M
- Max Working Pressure: 25 Bar
- Liquid Temp Range: -15°C- 120°C
- Power Supply: 3x220/380V, 50hz
- Motor:
 - TEFC, IP55, F Class,
 - Horsepower: 0.75kw-7.5kw



Functions:

- Alternative parallel
- Constant Pressure control by frequency converter
- Quiet and Non Water Hammer operation. Built in PI control function to control the pump in soft start and stop to prevent water hammer; to control the speed increase and decrease gradually to prevent the noise in sudden speed change
- System Stop automatically when no use of water. When the system detect no use of water, motor will reduce the speed in 10%, after 10sec, the system will stop the pump operation
- Dry Running Protection. When the pump running in full speed, but the pressure is still 50% under setting point. After 30sec, the system will shut down the power to prevent the damage of pump. Need to reset the system, then the pump can be restarted in 10sec.
- Alternative fault
- Alternative timing
- Built in RS-232 and RS-485 Communication Protocol
- Panel Display to display the failure signal for trouble shooting
- Motor Protection Functions: High / Low voltage; Over current, Overloading; Overheating; phase failure; ground- ing failure.

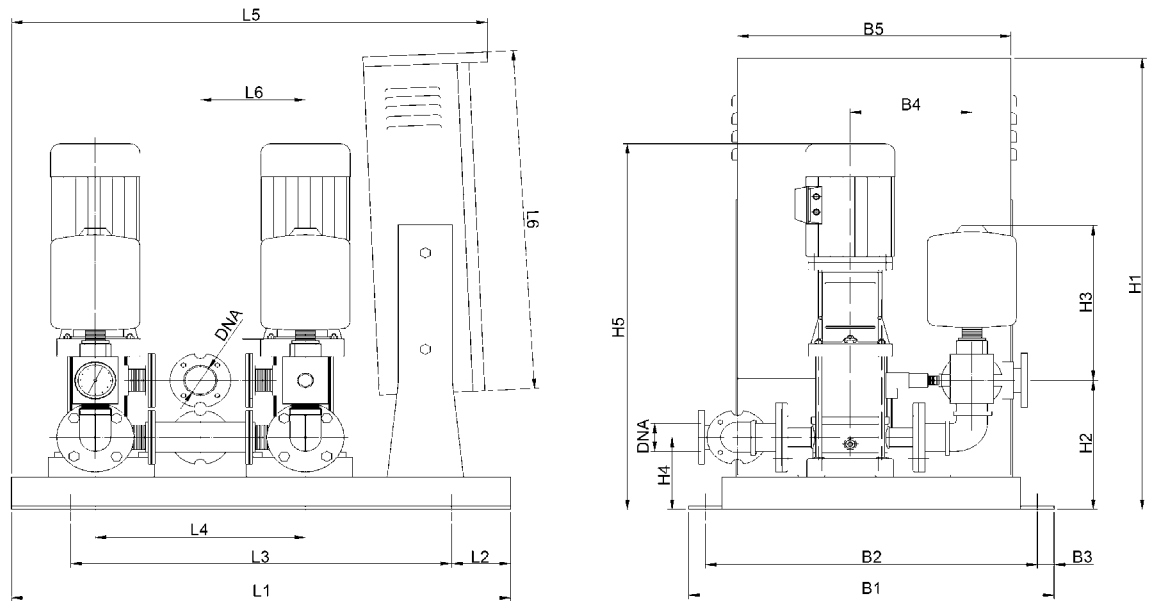
Qty	Parts	Description
1 pcs	HY-PO PLC Controller	HY-PO Japanese
2 pcs	Variable Frequency Drive	Danfoss or Equivaent
2psc	Pressure Diaphragm Tank	IPP Pressure Tank
2 pcs	5 Way Valve	SS304
1 pc	Pressure Guage	Max 10 Bar
1 pc	Pressure Transducer	Danfoss or Equivalent
1 set	Pipes, Fittings	SS304
1 pc	Base Plate	Mild Steel with Painting
1 pc	Panel	Mild Steel with Painting

2VMF2

2900rpm

Input Voltage 220-240V/ 380-460V 50Hz	Power		1/min	33.4	50	66.6	83.4	100	116.6
	Kw	Hp	m ³ /h	H (m)					
2VMF2-20	0.37	0.5	17	16	15	14	13	11	
2VMF2-30	0.55	0.75	25	24	34	32	29	27	
2VMF2-40	0.55	0.75	32.5	31	46	42	38	34	
2VMF2-50	0.55	0.75	41	39	57	52	48	42	
2VMF2-60	0.75	1.0	52	50	47	43	39	33	
2VMF2-90	1.1	1.5	78	74	69	63	58	46	
2VMF2-110	1.1	1.5	96	91	85	80	72	57	
2VMF2-130	1.5	2.0	112	107	100	90	81	69	
2VMF2-150	1.5	2.0	130	124	114	104	93	77	
2VMF2-180	2.2	3.0	156	149	138	125	100	92	
2VMF2-220	2.2	3.0	185	173	165	150	121	100	
2VMF2-260	3.0	4.0	218	103	194	176	150	120	

Dimensions



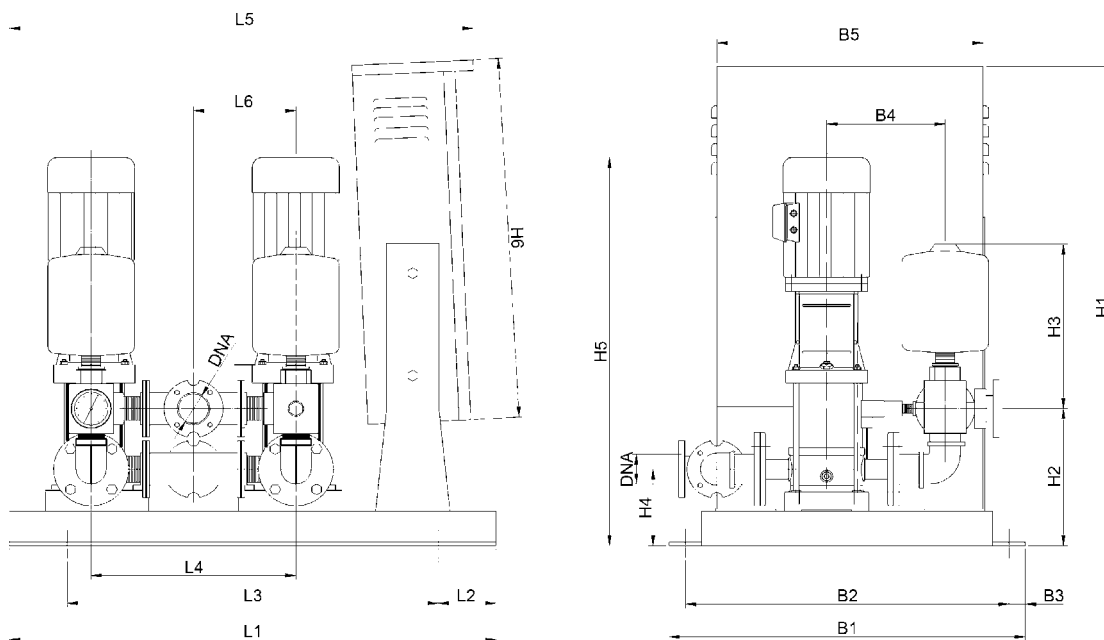
Cat	Pressure Tank	Dimensions (mm)																PUMP		Pipe Size	Wt. Kg	
		L1	L2	L3	L4	L5	L6	B1	B2	B3	B4	B5	H1	H2	H3	H4	H5	H6	IN DNA			OUT DNM
2VMF2-20	8L x 2	900	50	800	350	900	175	600	570	15	270	500	1000	210	350	135	580	700	1"	1"	2"	205
2VMF2-30	8L x 2	900	50	800	350	900	175	600	570	15	270	500	1000	210	350	135	598	700	1"	1"	2"	206
2VMF2-40	8L x 2	900	50	800	350	900	175	600	570	15	270	500	1000	210	350	135	616	700	1"	1"	2"	207
2VMF2-50	8L x 2	900	50	800	350	900	175	600	570	15	270	500	1000	210	350	135	634	700	1"	1"	2"	208
2VMF2-60	8L x 2	900	50	800	350	900	175	600	570	15	270	500	1000	210	350	135	662	700	1"	1"	2"	210
2VMF2-90	8L x 2	900	50	800	350	900	175	600	570	15	270	500	1000	210	350	135	716	700	1"	1"	2"	215
2VMF2-110	8L x 2	900	50	800	350	900	175	600	570	15	270	500	1000	210	350	135	752	700	1"	1"	2"	220
2VMF2-130	8L x 2	900	50	800	350	900	175	600	570	15	270	500	1000	210	350	135	848	700	1"	1"	2"	225
2VMF2-150	8L x 2	900	50	800	350	900	175	600	570	15	270	500	1000	210	350	135	884	700	1"	1"	2"	230
2VMF2-180	8L x 2	900	50	800	350	900	175	600	570	15	270	500	1000	210	350	135	938	700	1"	1"	2"	232
2VMF2-220	8L x 2	900	50	800	350	900	175	600	570	15	270	500	1000	210	350	135	950	700	1"	1"	2"	235
2VMF2-260	8L x 2	900	50	800	350	900	175	600	570	15	270	500	1000	210	350	135	1082	700	1"	1"	2"	238

2VMF4

2900rpm

Input Voltage 220-240V/ 380-460V 50Hz	Power		l/min m ³ /h	66.6	100	133.4	166.6	200	233.4	266.6
	Kw	Hp		4.0	6.0	8.0	10	12	14	16
2VMF4-20	0.55	0.75	H (m)	17	16.5	15.5	14.5	13	11	5
2VMF4-30	0.75	1.0		26	25	24	22.5	20	17.5	7.5
2VMF4-40	0.75	1.0		35	33.5	32	29.5	26.5	23	10
2VMF4-50	1.1	1.5		43	40	37	33	28	20	11.5
2VMF4-60	1.1	1.5		53	50	47	42	33	24	13
2VMF4-80	1.5	2.0		70	66.5	61	54	46	32	21
2VMF4-100	2.2	3.0		86	80	74	66	56	41	23
2VMF4-120	2.2	3.0		105	99	91	82	68	47	27
2VMF4-140	3.0	4.0		123	116	106	93	79	56	29
2VMF4-160	3.0	4.0		142	133	122	111	94	67	34
2VMF4-290	4.0	5.5		172	160	148	134	115	89	47
2VMF4-220	4.0	5.5		190	177	163	142	119	91	60

Dimensions



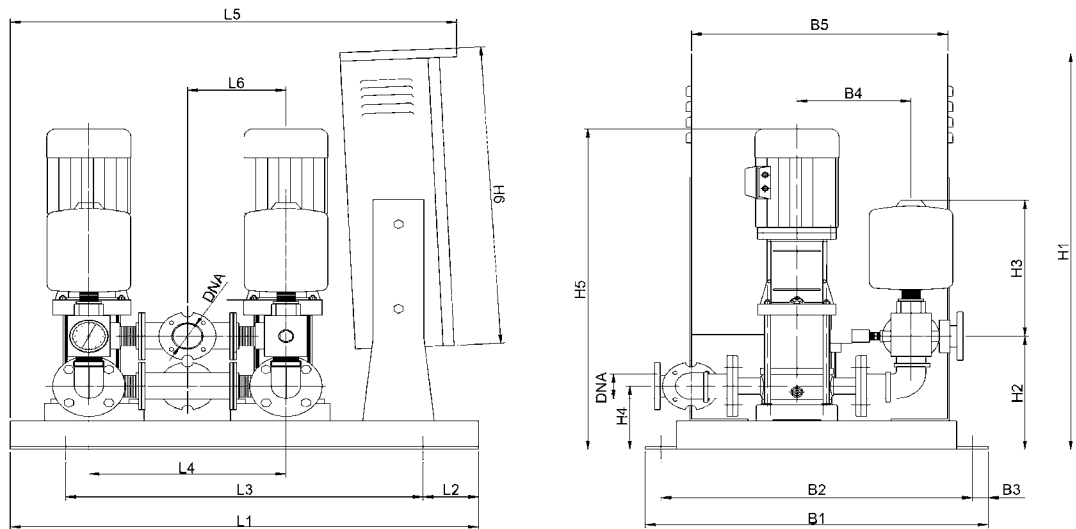
Cat	Pressure Tank	Dimensions (mm)																PUMP		Pipe Size	Wt. Kg	
		L1	L2	L3	L4	L5	L6	B1	B2	B3	B4	B5	H1	H2	H3	H4	H5	H6	IN DNA			OUT DNM
2VMF4-20	8L x 2	900	50	800	350	900	175	600	570	15	270	500	1000	235	380	135	598	700	1 1/4"	1 1/4"	2"	210
2VMF4-30	8L x 2	900	50	800	350	900	175	600	570	15	270	500	1000	235	380	135	625	700	1 1/4"	1 1/4"	2"	216
2VMF4-40	8L x 2	900	50	800	350	900	175	600	570	15	270	500	1000	235	380	135	652	700	1 1/4"	1 1/4"	2"	229
2VMF4-50	8L x 2	900	50	800	350	900	175	600	570	15	270	500	1000	235	380	135	689	700	1 1/4"	1 1/4"	2"	236
2VMF4-60	8L x 2	900	50	800	350	900	175	600	570	15	270	500	1000	235	380	135	716	700	1 1/4"	1 1/4"	2"	241
2VMF4-80	8L x 2	900	50	800	350	900	175	600	570	15	270	500	1000	235	380	135	830	700	1 1/4"	1 1/4"	2"	247
2VMF4-100	8L x 2	900	50	800	350	900	175	600	570	15	270	500	1000	235	380	135	884	700	1 1/4"	1 1/4"	2"	250
2VMF4-120	8L x 2	900	50	800	350	900	175	600	570	15	270	500	1000	235	380	135	938	700	1 1/4"	1 1/4"	2"	258
2VMF4-140	8L x 2	900	50	800	350	900	175	600	570	15	270	500	1000	235	380	135	992	700	1 1/4"	1 1/4"	2"	280
2VMF4-160	8L x 2	900	50	800	350	900	175	600	570	15	270	500	1000	235	380	135	1046	700	1 1/4"	1 1/4"	2"	280
2VMF4-190	8L x 2	900	50	800	350	900	175	600	570	15	270	500	1000	235	380	135	1127	700	1 1/4"	1 1/4"	2"	296
2VMF4-220	8L x 2	900	50	800	350	900	175	600	570	15	270	500	1000	235	380	135	1208	700	1 1/4"	1 1/4"	2"	300

2VMF8

2900rpm

Input Voltage 220-240V/ 380-460V 50Hz	Power		1/min	200	234	266	300	334	366	400	434
	Kw	Hp	m³/h	H (m)							
2VMF8-30	1.1	1.5	30	29.5	28.5	27	25	24	21	19	
2VMF8-40	1.5	2.0	41	39.5	38	36	34	32	28	26	
2VMF8-50	2.2	3.0	52	50	48	45	42	40	36	32	
2VMF8-60	2.2	3.0	62	60	57	54	51	48	43	39	
2VMF8-80	3.0	4.0	83	80	77	73	69	65	58	52	
2VMF8-100	4.0	5.5	104	100	97	92	87	81	73	65	
2VMF8-120	4.0	5.5	124	120	116	111	104	92	87	78	
2VMF8-140	5.5	7.5	145	141	136	130	122	113	102	92	
2VMF8-160	5.5	7.5	166	161	156	148	139	130	118	106	
2VMF8-180	7.5	10	187	182	175	167	157	146	134	120	
2VMF8-200	7.5	10	208	202	195	186	175	163	150	135	

Dimensions



Cat	Pressure Tank	Dimensions (mm)																PUMP		Pipe Size	Wt. Kg	
		L1	L2	L3	L4	L5	L6	B1	B2	B3	B4	B5	H1	H2	H3	H4	H5	H6	IN DNA			OUT DNM
2VMF8-30	20L x 2	900	50	800	350	900	175	600	570	15	270	500	1000	235	380	140	741	700	1 1/2"	1 1/2"	2 1/2"	280
2VMF8-40	20L x 2	900	50	800	350	900	175	600	570	15	270	500	1000	235	380	140	821	700	1 1/2"	1 1/2"	2 1/2"	290
2VMF8-50	20L x 2	900	50	800	350	900	175	600	570	15	270	500	1000	235	380	140	851	700	1 1/2"	1 1/2"	2 1/2"	300
2VMF8-60	20L x 2	900	50	800	350	900	175	600	570	15	270	500	1000	235	380	140	881	700	1 1/2"	1 1/2"	2 1/2"	314
2VMF8-80	20L x 2	950	50	850	350	950	175	680	650	15	270	600	1200	235	380	140	1005	800	1 1/2"	1 1/2"	2 1/2"	316
2VMF8-100	20L x 2	950	50	850	420	950	210	780	750	15	310	700	1200	235	440	140	1103	1000	1 1/2"	1 1/2"	2 1/2"	320
2VMF8-120	20L x 2	950	50	850	420	950	210	780	750	15	310	700	1200	235	440	140	1163	1000	1 1/2"	1 1/2"	2 1/2"	330
2VMF8-140	20L x 2	950	50	850	420	950	210	780	750	15	310	700	1200	235	440	140	1205	1000	1 1/2"	1 1/2"	2 1/2"	340
2VMF8-160	20L x 2	950	50	850	420	950	210	780	750	15	310	700	1200	235	440	140	1265	1000	1 1/2"	1 1/2"	2 1/2"	350
2VMF8-180	20L x 2	950	50	850	420	950	210	780	750	15	310	700	1200	235	440	140	1363	1000	1 1/2"	1 1/2"	2 1/2"	360
2VMF8-200	20L x 2	950	50	850	420	950	210	780	750	15	310	700	1200	235	440	140	1423	1000	1 1/2"	1 1/2"	2 1/2"	380

2 HSF Booster Set

Variable Frequency Constant – 2x ASG Pump

Specifications:

- Mono ASG Close Coupled Pump
- Material for all Wet Parts: SS304 or SS316
- Capacity: 6-100 m3/hr
- Head: 6-55M
- Max Working Pressure: 10 Bar
- Liquid Temp Range: -15°C- 110°C
- Motor:
 - Power Supply: 3x220/380V, 50hz
 - TEFC, IP55, F Class,
 - Horsepower: 0.75kw-7.5kw
 - Noise: 60dBA



Functions:

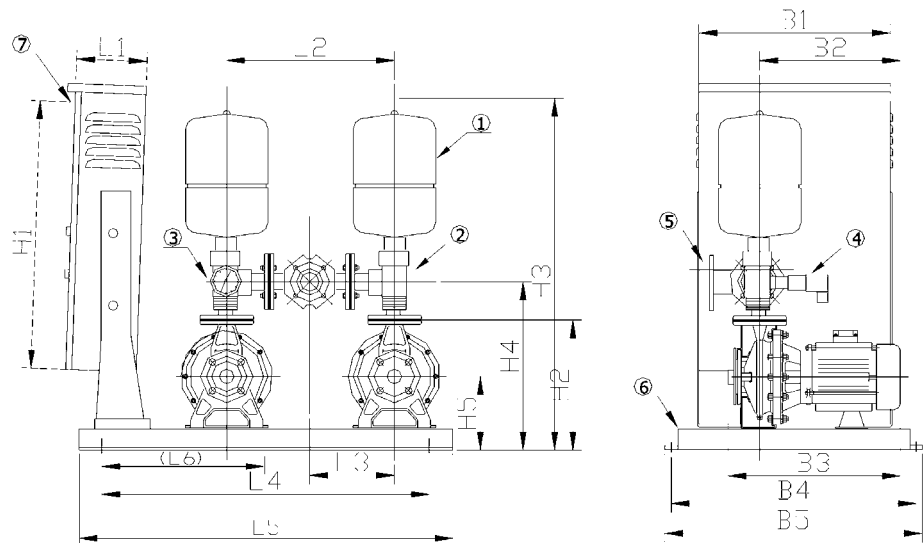
- Alternative parallel
- Constant Pressure control by frequency converter
- Quiet and Non Water Hammer operation. Built in PI control function to control the pump in soft start and stop to prevent water hammer; to control the speed increase and decrease gradually to prevent the noise in sudden speed change
- System Stop automatically when no use of water. When the system detect no use of water, motor will reduce the speed in 10%, after 10sec, the system will stop the pump operation
- Dry Running Protection. When the pump running in full speed, but the pressure is still 50% under setting point. After 30sec, the system will shut down the power to prevent the damage of pump. Need to reset the system, then the pump can be restarted in 10sec.
- Alternative fault
- Alternative timing
- Built in RS-232 and RS-485 Communication Protocol
- Panel Display to display the failure signal for trouble shooting
- Motor Protection Functions: High / Low voltage; Over current, Overloading; Overheating; phase failure; ground- ing failure.

Qty	Parts	Description
1 pcs	HY-PO PLC Controller	HY-PO Japanese
2 pcs	Variable Frequency Drive	Danfoss or Equivalent
2psc	Pressure Diaphragm Tank	IPP Pressure Tank
2 pcs	5 Way Valve	SS304
1 pc	Pressure Guage	Max 10 Bar
1 pc	Pressure Transducer	Danfoss or Equivalent
1 set	Pipes, Fittings	SS304
1 pc	Base Plate	Mild Steel with Painting
1 pc	Panel	Mild Steel with Painting

2 HSF

2900rpm

Input Voltage 380V 50Hz	Power		l/min	100	200	300	400	500	600	666	800	900	1000	1100	1200	1300	1400	1600	2000	2400
			m ³ /h	6.0	12.0	18.0	24.0	30.0	36.0	40.0	48.0	54.0	60.0	66.0	72.0	78.0	84.0	96.0	120.0	144.0
2 HSF 50-32-125 2.2	2.2	3.0	21	20.5	20	19	17.5	16.5	15	11										
2 HSF 50-32-160 2.2	2.2	3.0	26	25.5	25	24	23.5	21.5	20	18										
2 HSF 50-32-160 3.0	3.0	4.0	35	34	33	32	31	30	29	27										
2 HSF 50-32-200 4.0	4.0	5.5	40.5	40	38.5	37.5	36	34	33	30										
2 HSF 50-32-200 5.5	5.5	7.5	50	49.5	49	48.5	48	47.5	47	44.5										
2 HSF 65-40-125 2.2	2.2	3.0					15.5	15	14.5	14	13	12	11	10	8	6				
2 HSF 65-40-125 3.0	3.0	4.0					21.8	21.5	21.3	21.1	20.7	20.2	19.5	18.4	16	14.5	12.5			
2 HSF 65-40-160 4.0	4.0	5.5					28.5	28	27.4	27.1	26.3	25.4	24.3	22.9	21.37	20.5	19			
2 HSF 65-40-160 5.5	5.5	7.5					36	35	34.5	33.8	33	32	31.5	31	30.5	29.8	29			
2 HSF 65-40-200 7.5	7.5	10					44.5	43.5	42.5	42	41.8	41	40	38.5	37	35	33			
2 HSF 65-40-200 9.2	9.2	12.5					53.5	52.8	52	51.5	51	50.5	50	49.5	49	47	45.5			
2 HSF 65-50-125 4.0	4.0	5.5									21.6	21.2	20.5	20	19.2	18.2	17.5	15.5	11	8
2 HSF 65-50-125 5.5	5.5	7.5									25.6	25.4	24.9	24.5	23.8	23.3	22.6	21	19	14
2 HSF 65-50-160 7.5	7.5	10									30	29.8	29.5	28.8	28	27	26.5	24.8	23	19
2 HSF 65-50-160 9.2	9.2	12.5									37	36.5	36	35.3	34.5	34	33.8	32	30	27.5
2 HSF 65-50-200 11.0	11	15									52	51	50	49.5	49	47.5	48	46	41	33
2 HSF 65-50-200 15.0	15	20									55	54.8	54.5	54.3	54	53.5	53	51	46.8	40

Dimensions


Input Voltage 380V 50Hz	Dimensions (mm)															PUMP		Pipe Size
	L1	L2	L3	L4	L5	H1	H2	H3	H4	H5	B1	B2	B3	B4	B5	IN DNA	OUT DNM	
2 HSF 50-32-125 2.2	210	330	165	820	850	600~700	352	827	432	192	400~500	412	492	530	560	50	32	2 1/2"
2 HSF 50-32-160 2.2	210	330	165	820	850	600~700	352	827	432	192	400~500	412	492	530	560	50	32	2 1/2"
2 HSF 50-32-160 3.0	210	330	165	820	850	600~700	352	827	432	192	400~500	401	481	530	560	50	32	2 1/2"
2 HSF 50-32-200 4.0	210	330	165	870	900	600~700	400	875	480	220	400~500	439	519	530	560	50	32	2 1/2"
2 HSF 50-32-200 5.5	210	330	165	870	900	600~700	400	875	480	220	400~500	502	582	630	660	50	32	2 1/2"
2 HSF 65-40-125 2.2	210	330	165	820	850	600~700	352	752	357	192	400~500	409	489	530	560	65	40	3"
2 HSF 65-40-125 3.0	210	330	165	820	850	600~700	352	752	357	192	400~500	399	479	530	560	65	40	3"
2 HSF 65-40-160 4.0	210	330	165	820	850	600~700	352	752	357	192	400~500	399	479	530	560	65	40	3"
2 HSF 65-40-160 5.5	210	330	165	820	850	600~700	352	752	357	192	400~500	502	582	630	660	65	40	3"
2 HSF 65-40-200 7.5	250	330	165	850	950	600~800	400	800	405	220	700~900	502	602	780	810	65	40	3"
2 HSF 65-40-200 9.2	280	440	220	1000	1100	1000~1200	400	800	405	220	700~1000	541	641	780	810	65	40	3"
2 HSF 65-50-125 4.0	280	440	220	1000	1100	1000~1200	352	787	387	192	700~1000	409	509	780	810	65	50	4"
2 HSF 65-50-125 5.5	280	440	220	1000	1100	1000~1200	352	787	387	192	700~1000	512	612	780	810	65	50	4"
2 HSF 65-50-160 7.5	280	440	220	1000	1100	1000~1200	400	835	435	220	700~1000	512	612	780	810	65	50	4"
2 HSF 65-50-160 9.2	280	440	220	1000	1100	1000~1200	400	835	435	220	700~1000	551	651	780	810	65	50	4"
2 HSF 65-50-200 11.0	280	440	220	1000	1100	1000~1200	420	835	455	220	700~1000	596	696	780	810	65	50	4"
2 HSF 65-50-200 15.0	280	440	220	1000	1100	1000~1200	420	835	455	220	700~1000	596	696	780	810	65	50	4"

PT Pressure Tank for Reverse Osmosis

Description: The PT Tank are available in sizes from 3 to 160 liters for vertical installation – Horizontal version will be available in future. Tanks are diaphragm types are fitted with a non-toxic Polypropylene Liner and Butyl Diaphragm to separate water and air. The connections are in stainless steel which fitted for RO requirement.

The tanks are NSF approved under standard 58, and CE approved under the PED (pressure equipment directive), because of these approvals our tanks carry the appropriate markings and can be used everywhere in the world.



Tank Sizing:

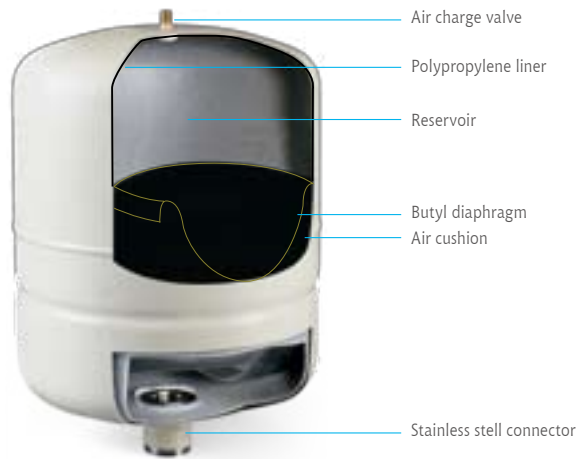
Model	Total Tank Volume		Connector BSP	Dimension		Shipping Weight kg	Packet Volume Cu/ft
	Gal.	liters		height mm W/Stand W/O Stand	Diameter mm		
PT-3V	0.8	3.0	1"	190	140	14.70	2.48/12 pcs
PT-8V	2.1	8.0	1"	320	202	2.50	0.52
PT-24V	6.3	24.0	1"	380	290	4.60	1.43
PT-58V	14.0	58.0	1"	520	390	9.25	3.08
PT-80V	20.0	80.0	1"	700	390	13	4.63
PT-160V	40.0	160.0	1 1/4"	910	550	25.00	11.06

REMARK

Maximum Working Pressure: 100PSI

All Tanks are Pre-charged at 5-7 PSI

All tanks are BSP Connections



Description:

High Performance sand Filter are manufactured with polyester and glass winding for dependable, durable and all weather operation. They are economic, high performance filters for private, fish pool, Jacuzzi and public pools

Filters with flange connection include with:

- Superior manhole
- Filtration bed with 1 meter of sand
- Stainless Steel hubs and laterals
- Air bleed system
- Drain for sand and water
- Manometer panel
- Inlets and outlets with detachable unions flanges
- Working pressure 2.5bar or 4 bar

Function of 6-way(multi-port) valve

filter, 2. waste, 3. close, 4. backwash, 5. re-circulate, 6. rinse

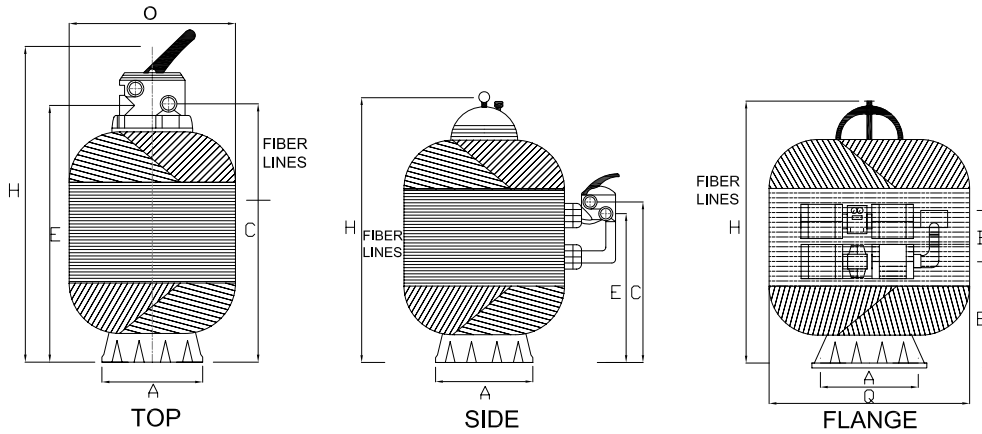


FBd8-a5



FB0a-H6

FB 064-200
00-FB-044-199



Technical Data For Top Mount Fiberglass Filter

Type	Diameter mm	Connection mm	Flow m3/hr	Surface Area m2	Efficiency %	Sand Weight kg	Pressure kg/m2	H mm	A mm	C mm	E mm
FB-018	400	40	4	0.126	75	70	2.5	730	370	555	555
FB-019	450	40	5	0.159	75	80	2.5	815	370	640	640
FB-020	500	40	6	0.196	75	100	2.5	886	460	710	710
FB-021	600	40	9	0.283	75	180	2.5	975	460	800	800
FB-022	750	50	13	0.442	75	250	2.5	1150	590	934	934
FB-023	900	50	19	0.636	75	350	2.5	1300	790	1084	1084
FB-024	1000	50	24	0.785	75	450	2.5	1380	945	1164	1164
FB-025	1200	50	33	1.131	75	750	2.5	1580	1010	1364	1364

Technical Data For Side Mount (Thread)Fiberglass Filter

Type	Diameter mm	Connection mm	Flow m3/hr	Surface Area m2	Efficiency %	Sand Weight kg	Pressure kg/m2	H mm	A mm	C mm	E mm
FB-001	500	40	6	0.196	95	120	2.5	811	460	551	470
FB-002	600	40	9	0.283	95	200	2.5	891	460	594	513
FB-003	750	50	13	0.442	95	300	2.5	1006	590	643	562
FB-004	900	50	19	0.636	95	400	2.5	1228	790	779	698
FB-005	1000	50	24	0.785	95	550	2.5	1233	945	787	707
FB-006	1200	50	33	1.131	95	750	2.5	1433	1010	901	820

Technical Data For Flange Fiberglass Filter

Type	Diameter mm	Connection mm	Flow m3/hr	Surface Area m2	Efficiency %	Sand Weight kg	Pressure kg/m2	H mm	A mm	C mm	E mm	B mm
FB-064	1200	3"	33	1.01	95	750	2.5	1400	1010	500	550	340
FB-067	1400	3"	46	1.54	95	1600	2.5	1620	1150	500	665	340
FB-200	1600	4"	60	2.01	95	2300	2.5	1760	1440	500	685	440
00-FB-044	1200	3"	33	1.01	95	1400	2.5	1800	1020	500	725	440
00-FB-047	1400	4"	46	1.54	95	1900	2.5	1800	1230	500	735	440
00-FB-173	1600	4"	60	2.01	95	2600	2.5	1900	1440	500	780	440
00-FB-174	1800	6"	76	2.545	95	3500	2.5	1940	1570	500	810	440
00-FB-186	2000	6"	94	3.142	95	4500	2.5	2000	1760	500	825	440
00-FB-190	2350	8"	130	4.337	95	6000	2.5	2360	1760	500	1020	600
00-FB-199	2500	8"	150	4.909	95	8300	2.5	2450	1760	500	980	600

Multiport Valve

Top Mount(Bolts)/(Clamps)

- FILTER: For normal filtration, and vacuuming pool though filter
- BACKWASH: For reversing flow for cleaning filter
- RINSE: For initial start-up cleaning, plus re-setting filter bed after backwashing
- WASTE: For vacuuming directly to waste, lowering pool level/draining pool
- CLOSE: For shutting off all flow to filter and pool
- RECIRCULATE: For by-passing filter, but circulating pool water

Size of Connection:

- 1 1/2" valve – 48 or 50mm unions available
- 2" valve – 60 or 63mm unions available
- 2 1/2" valve – 75 or 76mm unions available

Side Mount

- Easy-to-operate lever-action handle
- Heavy duty stainless steel spring
- High density abrasion-resistant disc key
- Mold ABS body and cover
- Built-in sight glass for convenient backwashing viewing

Size of Connection:

- 1 1/2" valve – 48 or 50mm unions available
- 2" valve – 60 or 63mm unions available
- 2 1/2" valve – 75 or 76mm unions available



Top Mount (Bolts)



Top Mount (Clamps)



Side Mount (Bolts)

Top-Mount(Bolts)

Model	Size
HT-715	1 1/2"
HT-720	2"
HT-725	2 1/2"

Top-Mount(Clamps)

Model	Size
HT-815	1 1/2"
HT-820	2"

Side Mount(Bolts)

Model	Size
HT-915	1 1/2"
HT-920	2"
HT-925	2 1/2"

SFC Top-Mount Sand Filter System

Descriptions:

Systems are designed for quick assembly and precise alignment of components to pump and filters are performance-matched to provide maximum flow and energy efficiency filter bases interconnect with fiberglass stand for long lasting all – weather performance combination water and sand drain makes servicing and winterizing fast and easy all model are inter system

Top-Mount Sand Filter System

Model Number	Filter Dia mm	Filter Control Valve mm	Pump	H.P.	Flow Rate (m ³ /h)	Head (m)	Volume (m ³)
SFC-021P75	600	1.5"MPV (HT815)	FCP-750S	1HP	16	11	0.49
SFC021P110	600	1.5"MPV (HT815)	FCP-1100S	1.5HP	21	13.2	0.49



PG Pressure Gauge

Specifications:

Gauge Dia: 1-1/2" , 2" and 2-1/2"

Accuracy: +/- 3-2-3%

Pressure Range: 4~20kg/cm² (Also use in 1-1/4")

Vacuum: 0~30inHg to 4000psi(300kg/cm²) (Also use in 1-1/2, 2 inch)

Vacuum: 0~30inHg to 15000psi(1000kg/cm²) (Also use in 2-1/2 inch)

Material: Steel with CED

Mirror: PVC, PC or Glass

Connector: Brass with BP thread

Horizontal Mounting

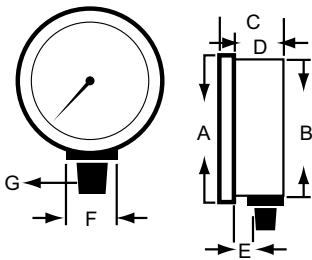
1-1/2 inch



2 inch



2-1/2 inch



Model Inch mm	P-A10S	P-A20S	P-A25S	P-A30S	P-A40S
	1-1/2	2	2-1/2	3	4
A	42.0	52.8	64.0	76.8	100
B	41	51.8	63.0	74.0	98.5
C	23.5	27.5	28	35.5	37
D	16.5	19.7		17.5	
E	2.7	3.0			

Build in Mounting

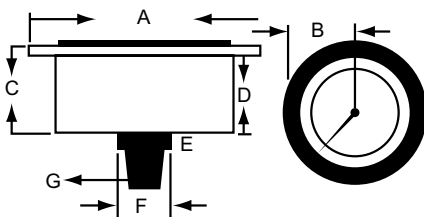
1-1/2 inch



2 inch



2-1/2 inch



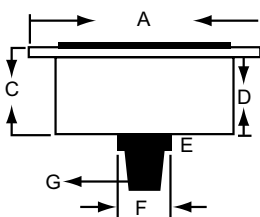
Model Inch mm	P-AD12S	P-AD15S	P-AD20S	P-AD25S
	1-1/4	1-1/2	2	2-1/2
A	32.6	42.3	52.8	
B		41	51.8	
C	19	23	26.6	
D				
E		6	7	

Build in with Flange Mounting

2 inch



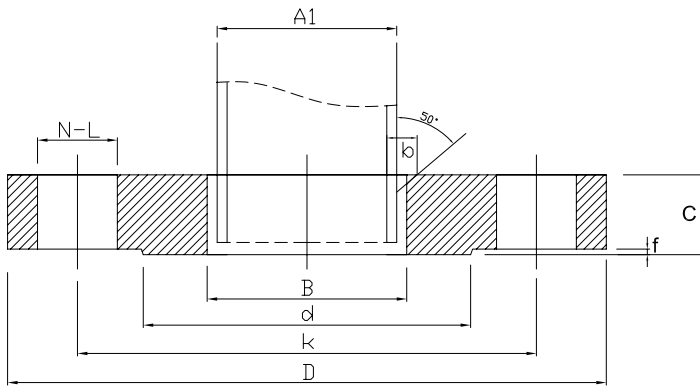
2-3/4 inch



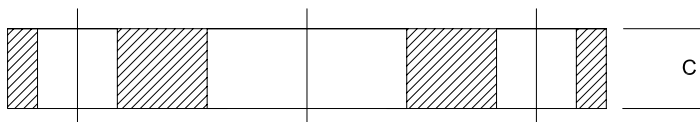
Model Inch mm	P-BD20	P-BD26
	2	2-3/4
A	65	85.3
B	55	68
C	25	26
D	24	25
E		9

Flange – Cast SS304, DIM PN10

DN	A1		D	K	L	Th.	d	f
	A	B						
10	17.2	14	90	60	14	M12	40	2
15	21.3	18	95	65	14	M12	45	2
20	26.9	25	105	75	14	M12	55	2
25	33.7	32	115	85	14	M12	65	2
32	42.4	38	140/135	100	18	M16	78	2
40	48.3	45	150/145	110	18	M16	85	3
50	60.3	57	165/160	125	18	M16	100	3
65	76.1	76	185/180	145	18	M16	120	3
80	88.9	89	200/195	160	18	M16	135	3
100	114.3	108	220/215	180	18	M16	155	3
125	139.7	133	250/245	210	18	M16	185	3
150	168.3	159	285/280	240	18	M16	210	3
175	-	194	310	270	23	M20	240	3
200	219.1	219	340/335	295	23	M20	265	3



RF



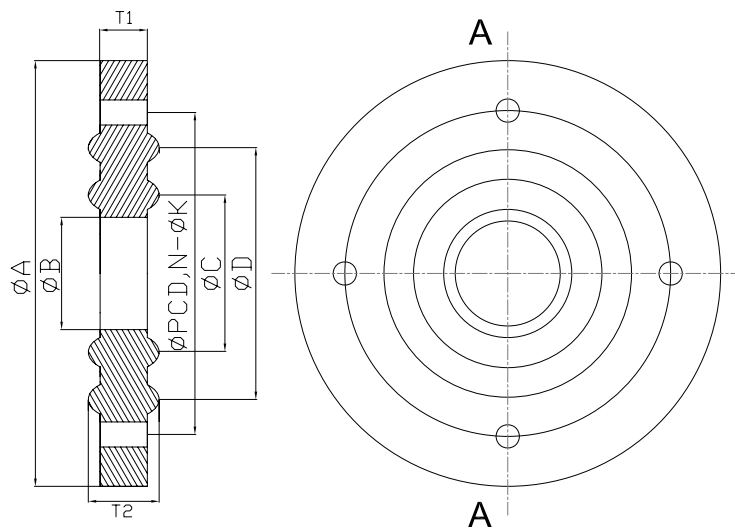
FF

DIN PN 10

Unit : mm



DIN	A	B	C	D	T1	PCD	n- ϕ k	T2
15	93	18	26	41	3	65	4-14	5
20	105	22	32	47	3	75	4-14	5
25	113	30	38	53	3	85	4-14	5
32	133	37	50	65	3	100	4-18	5
40	148	43	54	69	3	110	4-18	5
50	163	54	68	83	3	125	4-18	5
65	183	69	86	101	3	145	4-18	5
80	198	80	98	112	3	160	8-18	5
100	21	102	120	138	3	180	8-18	5
125	248	127	145	166	3	210	8-18	5
150	283	150	168	170	3	240	8-23	5
200	338	198	216	247	3	295	12-23	5

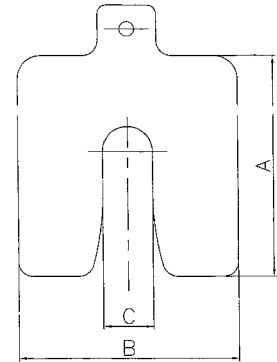


TMAS Single Slot Shims

- Features: No sharp edge; corrosion resistance; No burr
- Material: SS304
- Tolerance: +/- 0.005mm

Shims for 1 hp to 40hp Motor

Designation	Number of Shims per set	A mm	B mm	C mm	Thickness Mm
TMAS 50-005	20	50	50	13	0.05
TMAS 50-008	20	50	50	13	0.08
TMAS 50-010	20	50	50	13	0.10
TMAS 50-015	12	50	50	13	0.15
TMAS 50-020	12	50	50	13	0.20
TMAS 50-030	12	50	50	13	0.30
TMAS 50-050	8	50	50	13	0.50
TMAS 50-060	8	50	50	13	0.60
TMAS 50-080	8	50	50	13	0.80
TMAS 50-100	8	50	50	13	1.00
TMAS 50-150	8	50	50	13	1.50



Shims for 15 hp to 75hp Motor

Designation	Number of Shims per set	A mm	B mm	C mm	Thickness Mm
TMAS 75-005	20	75	75	17	0.05
TMAS 75-008	20	75	75	17	0.08
TMAS 75-010	20	75	75	17	0.10
TMAS 75-015	12	75	75	17	0.15
TMAS 75-020	12	75	75	17	0.20
TMAS 75-030	12	75	75	17	0.30
TMAS 75-050	8	75	75	17	0.50
TMAS 75-060	8	75	75	17	0.60
TMAS 75-080	8	75	75	17	0.80
TMAS 75-100	8	75	75	17	1.00
TMAS 75-150	8	75	75	17	1.50



Shims for 100hp to 270hp Motor

Designation	Number of Shims per set	A mm	B mm	C mm	Thickness Mm
TMAS 110-005	20	110	110	25	0.05
TMAS 110-008	20	110	110	25	0.08
TMAS 110-010	20	110	110	25	0.10
TMAS 110-015	12	110	110	25	0.15
TMAS 110-020	12	110	110	25	0.20
TMAS 110-030	12	110	110	25	0.30
TMAS 110-050	8	110	110	25	0.50
TMAS 110-060	8	110	110	25	0.60
TMAS 110-080	8	110	110	25	0.80
TMAS 110-100	8	110	110	25	1.00
TMAS 110-150	8	110	110	25	1.50



**No. 23, Lane 2, Sec. 2, Shatian Rd.,
Dadu Shiang, Taichung County 432, Taiwan
Tel : +886 - 4 - 26991558
Fax: +886 - 4 - 26991553**