

# SlipForm Pavers - HEM 12-27 Slip Form Paver in India



12 -27 - SlipForm Paver

## Optional Equipment (not included in base machine)

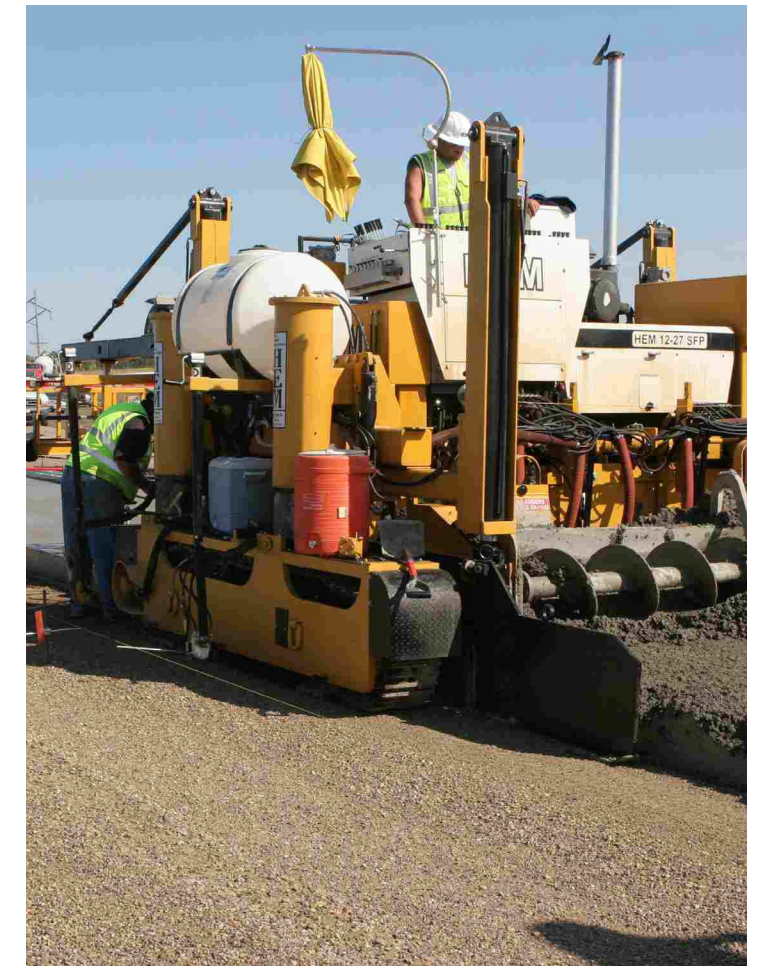
- Poly Pads
- Additional Complete Frame Extension Assemblies
- Additional Hydraulic Vibrators
- Curb Molds Built to Customer Specifications
- Male Side Form Key
- Hydraulic Center Bar Inserter with Electronic Indicator
- Hydraulic Side Bar Inserter with Electronic Indicator
- Hydraulic Oscillating Rear Belt Finisher
- Hydraulic Curb Shut-Of for Curb Molds
- Curb Shut-Of for Curb Molds
- Belt Conveyor for Unloading Transit Mixer Of-Grade
- Sensor for Reverse Steering and Travel
- Water Fogging Bar (for watering burlap)
- Additional 8 Port Vibrator Manifold
- 4 Point Outrigger Lift
- Hydraulic Oscillating Auto Float
- Hydraulic Edge Slump Control (in lieu of manual)
- Metal Keyway Former and Punch Assembly
- Optional Track Lengths and Width



Optional Water Fogging Bar



Optional Auto Float



Authorized India Representative :



[www.apolloinfratech.com](http://www.apolloinfratech.com)





## Standard Specifications for HEM 12-27 SlipForm Paver

### CAT C7 Turbocharged Diesel Engine -

240 hp (179 kW) Tier III  
enclosed engine compartment  
engine sound proofing

### Hydraulic Oil Reservoir 211 gallon (798 liter)

### Fuel Reservoir 116 gallon (440 liter)

### 2 Hydraulic System Heat Exchangers with electric fan

### 16 Hydraulic Vibrators

vertical adjustment controlled from operator's platform  
individual or en-masse vibrator speed controls  
automatic shut-of with machine travel  
maximum flow 4 gallon (15.14 liter) per minute  
normal operating pressure 800 - 1300 psi

### 16 Hydraulic Vibrator Circuits with individual variable controls pressure compensated

### Hydraulic Pump System

(2) triple stage hydraulic pumps  
(1) double stage hydraulic pump  
one pressure relief manifold for convenient  
pressure monitoring and pressure adjustments

### Two Crawler Tracks

length: 11 ft. 11 inches (3.65 m)  
width: 12 inches (30 cm)  
6 inch (15 cm) pitch - triple grouser shoes  
101:1 gear reduction  
sealed, lifetime lubricated rollers

### 12 ft. - 27 ft. (3.65 m - 8.2 m) Paving Width

by 6 inch (15 cm) increments  
12 ft. (3.65 m) main frame (minimum width)  
additional paving width to 35 ft. (10.67 m) is optional

### Paving Pans

bolt-together sections to allow for paving  
12 ft. - 27 ft. (3.65 m - 8.2 m) by 6 inch (15 cm) increments  
3/8 inch thick x 18 inch high x 52 inch long  
(9 mm thick x 45 cm high x 132 cm long)  
power crown "on-the-go" for uninterrupted paving  
through transitions and intersections  
tamper and vibrator rack follow vertical movement of pans  
hydraulic power crown controlled from operator console  
crown gauge indicator  
curb mold inserts for right and/or left side  
8 inch (20.3 cm) trailing pan extensions with vertical  
stabilizers at 1 ft. (30.5 cm) intervals for fine adjustment and  
rigidity

### Hydraulically Powered Split Tamper Bar System

adjustable tamping depth  
variable speed  
double bar system

### Hydraulically Adjustable Side Forms

6 way hydraulic adjustment  
split 30 inch (76 cm) high side forms - folding inward for  
transport  
side forms attach to the main frame of the machine,  
not tracks  
18 inch (45 cm) vertical stroke,  
4 inch (10 cm) horizontal stroke  
adjustable edge slump control  
hydraulically controlled from ground and  
operator's platform

### Spreader Auger System

16 inch (41 cm) diameter, split reversible, heavy duty augers,  
variable speed  
planetary drives  
augers are adjustable for height  
augers drives are shielded from wet concrete  
quick disconnect for width changes

### Hydraulic Strike-Of

hydraulically controlled strike-of plates  
individual controls for variable crown paving

### Grade Control System

4 hydraulic stringline sensors  
automatic and manual control from operator's platform  
system works with two string lines, or "lock to grade"

### Steering System

1 Hydraulic stringline sensor  
steer from right or left hand side of machine  
automatic and manual steering, controlled from  
operator's platform

### Power Wash System

(2) 110 gallon (416 liter) water tanks  
2000 psi, 4 gallon (15 liter) per minute hydraulic  
power wash pump  
25 ft. (7.6 m) high pressure hose and wand

### Intermittent Shut-Down System

single switch operation  
electronic over hydraulic  
controls all critical functions of machine:  
grade, travel, tamper, vibration, belt finisher

### Operator's Platform

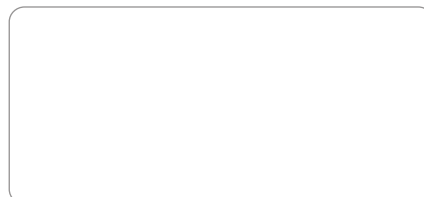
hydraulic system pressure gauges: grade, travel, vibrator,  
tamper, auger  
hydraulic controls: travel, vibrator, tamper, pressure wash,  
strike-of, auger, grade  
high visibility "wrap around" console  
engine controls and monitoring devices mounted on console  
safety railing  
engineered for easy monitoring of all machine functions  
canopy

Additional Options Available : Consult our Authorized India Representative on below mentioned contact details



### Apollo Infratech Pvt. Ltd.

(an Apollo Infratech Group company)  
Ahmedabad - Mehsana State Highway  
Village : Rajpur, 382715. Dist. Mehsana, (Gujarat) INDIA.  
Office (M) : +91 90990 71618  
sales@apolloinfratech.com



## 12 -27 - SlipForm Paver



Individual Solutions for all Your Paving Needs



Authorized India Representative :



www.apolloinfratech.com