



UNIVERSE
SURGICAL EQUIPMENTS CO.




UNIVERSE SURGICAL EQUIPMENTS CO.

**You deserve a
Healthy Life!**

PRODUCT CATALOGUE

About Us

 is one of the fastest growing consumer healthcare product organization addressing the needs of pain management, wound and mobility market through an extensive range of quality products in medical devices in the fields of Urology, Gastroenterology and Interventional Radiology.

Research and Development -

As a growing company we don't have to focus only on development. But we are working on research, planning and development. So we are continuously improving the quality of the products and researching new solutions for changing customer needs and market dynamics. Our research and production teams work in tandem to realize the above objective.

Manufacturing and Distributions

As an growing company we need to think all the parameter which are essential for the Manufacturing of Medical Devices under WHO–TRS compliance. we although understand the major and minor necessities of Manufacturing and we step on it.

Our Vision

"Providing new , better and innovative solutions in Orthopedics and other allied fields

To work in collaboration with academic and medical fraternity to improve health care standards

Emphasis on quality and use of technology to provide the best health care products to the customers "

Quality

"We are committed to delight our customers and provide them best of quality products".

- By adopting highest industry standards.
- Regular improvement in the production efficiency, quality and delivery of our products.
- Their regular R&D process going for providing even more better quality goods .

Our Mission

To Excel in designing & delivering of healthcare products and services with user friendliness and safety features using latest technology for the best comfort to the customers which give them a satisfaction

CONTENTS

ANESTHESIA/RESPIRATORY

ENDOTRACHEAL TUBE CUFFED/UNCUFFED	4
SAFETY TUBE CREINFORCED E.T TUBE	4
RAY NASAL NORTH POLAR TUBE	4
RAY ORAL SOUTH POLAR TUBE	5
INTRODUCER BOUGIE	5
INTUBACTION STYLET	6
LARYNGEAL MASK	6
C-PAP/BI-PAP MASK	6
C-PAP/BI-PAP HOSE PIPE	7
AMBU BAG	7
TRACHOTUBE CUFFED/UNCUFFED	7
T.T INNER CANNULA	8
NEBU MASK	8
HI-OXY MASK	8
OXYMASK	8
OXYTUBE	9
NASOPHARYNGEAL AIRWAY	9
CATHETER MOUNT	9
SPIRO-FLO	9
T-RECOVERY	10
VENTILATOR CIRCUIT	10
BAIN CIRCUIT	10
HME FILTER	11
GUEDEL AIRWAYS	11
SPINAL NEEDLE	11
MADOFIX KIT	11

CRITICAL CARE

CENTROLINE	19
MADOFIX	19
P.M KIT	20
CLOSED SUCTION SYSTEM	20
CHEMO NEEDLE	20
SPO2 PROBE	20
BIOPSY GUN	21
BIOSLIT	21
BONE MARROW	21
EPIDURAL NEEDLE	21

CARDIAC

EMBOLECTOMY CATHETER	13
CONTROL SYRINGE	13
MA BAND	13
ARTERIAL PUNCHURE NEEDLE	13
MANIFOLD	14
ANGIO KIT	14
PTCA KIT	14
PTCA Y CONNECTOR KIT	14
INFLATION DEVICE/KIT	15
RADIAL SHEATH	15
ANGLOGROPHY CATHETER	15
GUIDING CATHETER	15
PTCA BALLOON	16
ASPIRATION CATHETER	16
TRANSSEPTAL NEEDLE	16
TEMPORARY PACING LEAD	16
VASCULAR SNARE	17
MULLIN SHEATH	17
PTCA STENT	17
INTRODUCER SHEATH	17

DIALYSIS

MADHUKAR	23
LONG TERM DIALYSIS CATHETER KIT	23
A.V.FISTULA NEEDLE SET	24
TRANSDUCER PROTECTORS	24
GUIDE WIRE	24
INTRODUCER NEEDLE	24

WOUND CARE

MADODERM	26
MADODERM WITH HP PAD	26
MADODERM	26
MADOPRIME	26
SURGICAL PAD	27
MADOSWAB	27
MADO MOPS	27
DIANA BAND	27
MADOPORE	28
MADOTRANS	28
MADO MESH	28
COLLASHEET	28
WOUND FILL	29
WOUND FILL WITH AB	29
COLLAGRAFT	29
ABSPONGE	29

UROLOGY

DOUBLE J STENT	31
P.C.N.CATHETER	31
STON BASKET NITINAL	31
PENILE CLAMP	31
ALL SILICONE FOLEYS	32
MADODRAIN	32
FASCIAL DILATOR SET	32
URETHRAL DILATOR SET	32

TRANSFUSION

M FLON / N FLON	36
SARGEN NON-VENTED I.V SET	36
VENOLINE	36
P.M.LINE	36
MADO-FLOW	37
MADO SPLINT	37
I.V.FIX	37
MADODERM	37

VASCULAR

COMPRESSING STOCKING	41
ANIT EMBOLISM	41
VARICOSE VIEN STOCKING	41

STERLIZATION

SERLIZATION REEL	43
AUTOCLAVE	43
E.T.O.TAPE	43

ORTHOPEDIC

ALL ORTHO	45 TO 52
-----------	----------

E.N.T

MEDOCEL	34
NASOSPLINT	34
MADOWICK	34
MADOVENT	34

SURGERY

ABSPONGE	39
VACCU SUCTION SET	39
MADOVAC SET	39
MADOLINE MESH	39

MISCELLANEOUS

EYE PAD	54
SKIN MARKER	54
SKIN RAZOR	54
SKIN STAPLER REMOVER	54
SURGICLOSE SKIN STAPLER	55
SKIN SEAL	55
MADOPEN	55
MADOPLATE	55
CLEAR TIP	56
CORD CLAMP	56
SKIN GRAFTING BLADE	56
B.P. BLADE	56
E.C.G.ELECTRODE	57
E.C.G.PAPER	57
OXYGEN FLOW METER	57
VENTURI MASK	57



ANESTHESIA/RESPIRATORY



Endotracheal Tube (Cuffed)

- Provided with soft cuff based on high volume and low pressure at the distal end
- Non–return valve with pilot cuff for easy assessment of the pressure in the main cuff

Sizes	
Sizes	5.0 mm to 10.0 mm



Endotracheal Tube (Uncuffed)

- Made of special thermo sensitive material readily conforming to body curvatures at body temperature

Sizes	
Sizes	2.5 mm to 5.0 mm



Safety Tube

Reinforced Endotracheal Tube

- Flexo–Metallic Reinforced Endo Tracheal Tube for airway management intended for use in surgeries demanding flexible head or neck position.
- Specially designed, suitable to laryngeal–tracheal anatomy, ensuring patient safety.
- Flexo–Metallic feature provides 100% kink resistance & anti crushing strength to the Endo Tracheal Tube.
- Easy, non–traumatic intubation and ex–tubation.

Sizes	
Sizes	3.0 mm to 10.0 mm



Ray Nasal / North Polar Tube (Uncuffed)

- Made of special thermo sensitive material readily conforming to body curvatures at body temperature

Sizes	
Sizes	3.0 mm to 5.0 mm



Ray Nasal / North Polar Tube (Cuffed)

- Provided with soft cuff based on high volume and low pressure at the distal end
- Non–return valve with pilot cuff for easy assessment of the pressure in the main cuff

Sizes	
Sizes	3.0 mm to 8.5 mm



Ray Oral / South Polar Tube (Uncuffed)

- Made of special thermo sensitive material readily conforming to body curvatures at body temperature

Sizes	
Sizes	3.0 mm to 5.0 mm



Ray Oral / South Polar Tube (Cuffed)

- Provided with soft cuff based on high volume and low pressure at the distal end
- Non–return valve with pilot cuff for easy assessment of the pressure in the main cuff

Sizes	
Sizes	3.0 mm to 8.5 mm



Introducer Bougie

The tracheal tube introducer, known as the bougie, is typically used to aid tracheal intubation in poor laryngoscopic views or after intubation attempts fail. The effect of routine bougie use on first–attempt intubation success is unclear.

Sizes	
Sizes	10 FR 70 CM / 15 FR 70 CM



INTUBATION STYLET

The stylet is a rigid but malleable introducer which fits inside the endotracheal tube and allows for manipulation of the tube shape; to facilitate passage of the tube through the laryngeal inlet.

Sizes	
Sizes	6 FR / 10 FR / 14 FR



Laryngeal Mask Airway

- Specially engineered laryngeal mask comes with separate inflation line
- Disposable airway has 15mm standard connector
- Radio-Transparent line for X-ray visualization
- Pilot balloon for easy inflation and deflation of cuff

Sizes	
Sizes	1, 1.5, 2, 2.5, 3, 4 & 5



Laryngeal Mask Silicon

- Specially engineered laryngeal mask comes with separate inflation line
- Disposable airway has 15mm standard connector
- Radio-Transparent line for X-ray visualization
- Pilot balloon for easy inflation and deflation of cuff

Sizes	
Sizes	1, 1.5, 2, 2.5, 3, 4 & 5



C-Pap / Bi-Pap Full Face Mask / Nasal Mask

The Sargen is the standard for CPAP masks. Offering streamlined design and quiet performance, It is easy to fit and use, offering a choice of 24 forehead support positions to best suit your individual facial structure. The New cushion technology also accommodates a wide range of movement during sleep and provides an effective solution for jaw drop

Sizes	
Sizes	SMALL / MEDIUM / LARGE



CPAP Hose Pipe

The streamlined design of the tube makes it easier for patients to move around in bed without pulling on the mask, so their mask and seal stay stable.

Handy smart-fit cuff design makes it simpler to attach and remove

Travel-friendly tube for use at home, in hospital or while traveling

Length	
Length	1.8 Meters



Silicone Manual Resuscitator With Accessories

- Resuscitator & Mask made up from 100% silicone.
- Silicone Resuscitator provides excellent bag re-expansion property.
- Pressure Limiting Valve ensures crucial adjustments for enhanced performance.
- Presence of 360 degree swivel joint between Patient Valve and Face Mask facilitates ease of maneuverability to interface with the patient's posture.

Sizes	
Sizes	Adult / Pediatric / Infant



Trachotube (Cuffed)

Tracheostomy Tube

- Soft low pressure cuff dynamically adjusts the pressure at the point of contact during the breathing cycle minimizes the risk of tracheal trauma & other complications.
- Pilot balloon with non return valve facilitates the cuff inflation & deflation.

Sizes	
Sizes	3.0 to 9.0



Trachotube (Uncuffed)

Tracheostomy Tube

- Being light in weight and non irritant it avoids the inflammation around Tracheostomy

Sizes	
Sizes	3.0 to 5.0



Tracho Inner Cannula

Tracheostomy Inner Cannula

The inner cannula fits inside the outer cannula. It has a lock to keep it from being coughed out, and it is removed for cleaning. The obturator is used to insert a tracheostomy tube. It fits inside the tube to provide a smooth surface that guides the tracheostomy tube when it is being inserted.

Sizes	
Sizes	6.0, 6.5, 7.0, 7.5, 8.0 & 8.5



Nebu mask (Nebulizer Mask)

- Specially designed nebulizer chamber with nebulization rate of approximately 3cc in 10 minutes
- Average particle size generation is approximately 2 microns
- Complete kit consists of: Nebulizer Mask, Nebulizer Chamber, and Star Lumen Tubing
- 200 cm long star lumen tubing to ensure continuous flow of oxygen

Sizes	
Sizes	Adult / Pediatric



HI OXY MASK

HIGH CONCENTRATION MASK

- Specially designed for High Concentration Oxygen Therapy.
- Equipped with soft, transparent and odour free Vinyl Mask for greater patient comfort.
- Non return valves provided at inhale and exhale points, prevent CO₂ retention.
- Light weight reservoir improves the oxygen efficiency and patient comfort.
- Mask with Elastic Strap and Non Return Valve.

Sizes	
Sizes	Adult / Pediatric



OXY MASK (OXYGEN MASK)

- OXYMASK is designed for convenient oxygen therapy.
- Moulded face mask is manufactured from non-toxic, non irritant medical grade PVC.
- Provided with adjustable elastic strap for proper positioning of mask on the nasal area.
- Swivel connector for convenience of attachment to the oxygen tube.
- Two meter multichannel tube is provided to ensure continuous flow of oxygen.
- Proximal end fitted with soft funnel shape connector for easy connection to oxygen source.

Sizes	
Sizes	Adult / Pediatric



OXY TUBE (NASAL CANNULA)

- Suitable for easy and efficient administration of oxygen
- Star lumen kink resistant main tube to avoid accidental blockage
- Soft twin prong nasal tips to ensure equal distribution of oxygen through both air passages which provides maximum patient comfort
- Tube length: 200cm

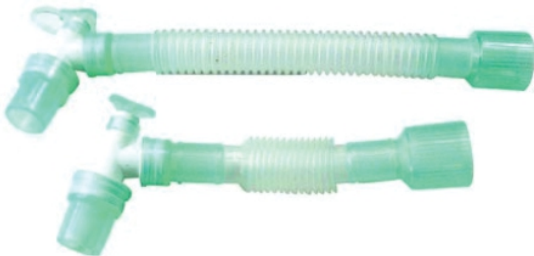
Sizes	
Sizes	Adult, Pediatric & Neonatal



NASOPHARYNGEAL AIRWAY

- Suitable for suctioning in I.C.U.s & provide an alternative way when oropharyngeal airway is occluded.
- Made of Medical Grade PVC readily conforms to the nasopharyngeal anatomy.
- Thin wall construction provides maximum inner diameter.
- Interior walls with channel grooves, facilitate easy insertion of catheter.
- Specially designed bevel tip reduces mucosal trauma during insertion.

Sizes	
Sizes	6.0, 6.5, 7.0, 7.5 & 8.0 mm



CATHETER MOUNT

- Suitable for connection between endotracheal tube and breathing circuits
- Provided with 22 mm standard female connector compatible with all breathing & ventilator circuits
- An elbow port is provided for easy suctioning without causing disturbance to breathing circuits



SPIRO-FLO

Respiratory Exerciser

- Innovative system to exercise respiration through aspiration
- Provided with unique handle for easy holding while exercising
- Breathing capacity of 1200cc, 900cc & 600cc provides more efficient exercise to the patient at a step up basis
- Innovative design, can be dismantled into parts for cleaning & disinfection
- Tube holder holds flexible tube while not in use
- Air Filter for enhanced protection during inspiration



T-RECOVERY / T-OXYGENERATOR

- Suitable for easy and efficient administration of oxygen
- Star lumen kink resistant main tube to avoid accidental blockage
- Soft twin prong nasal tips to ensure equal distribution of oxygen through both air passages which provides maximum patient comfort
- Tube length: 200cm

Sizes	
Sizes	Adult



VENTILATOR CIRCUITS PLAIN

- 22mm corrugated tube of 1.6 m length
- 22mm male and female circuit adaptors x2 insertion.

Sizes	
Sizes	Adult / Pediatric



VENTILATOR CIRCUITS DOUBLE WATER TRAPE

- Flexible breathing system consists of 2 ports of 22 mm diameter
- Y Connector with ports
- Safety cap
- 22 mm straight connector to connect the machine port
- 2 Water traps
- Water trap with capacity of 50ml approx.

Sizes	
Sizes	Adult / Pediatric



BAIN CIRCUITS

- Provided with 22mm Corrugated tube of length 1.6m
- 6mm green PVC tube of length 1.6 m
- APL Valve
- 2.0 L Antistatic Rebreathing Bag
- Provided with 15mm and 10mm corrugated tube of length 1.6m
- 0.5 L Antistatic Rebreathing Bag

Sizes	
Sizes	Adult / Pediatric



HME / BVF FILTER

- Filter particles
- Moisture return: 32mg H₂O/L
- Flow rate: 30L/minute at pressure 0.2Mpa
- Filter efficiency: greater than 95%
- Minimum tidal volume: 150ml

Sizes	
Sizes	Adult



GUEDEL AIRWAYS

- Suitable for maintaining an unobstructed oropharyngeal airway
- Bite block to prevent biting of tongue and airway occlusion
- Rounded traumatic edges & smooth airway
- Color coded for easy identification of sizes

Sizes	
Sizes	000, 00, 0, 1, 2, 3, 4, 5



SPINAL NEEDLE

Spinal Introducer needles allow for easy insertion of the Spinal Needle and provide additional support. Available in two types quincke and Pencil type. Quincke Type needle provide a sharper bevel for low puncture force, while allowing for tactile, reliable the precision-ground styles are designed to minimize tissue coring and optimize gliding characteristics.

Sizes	
Sizes	18G, 20G, 21G, 22G, 23G, 24G, 25G, 26G, 27G

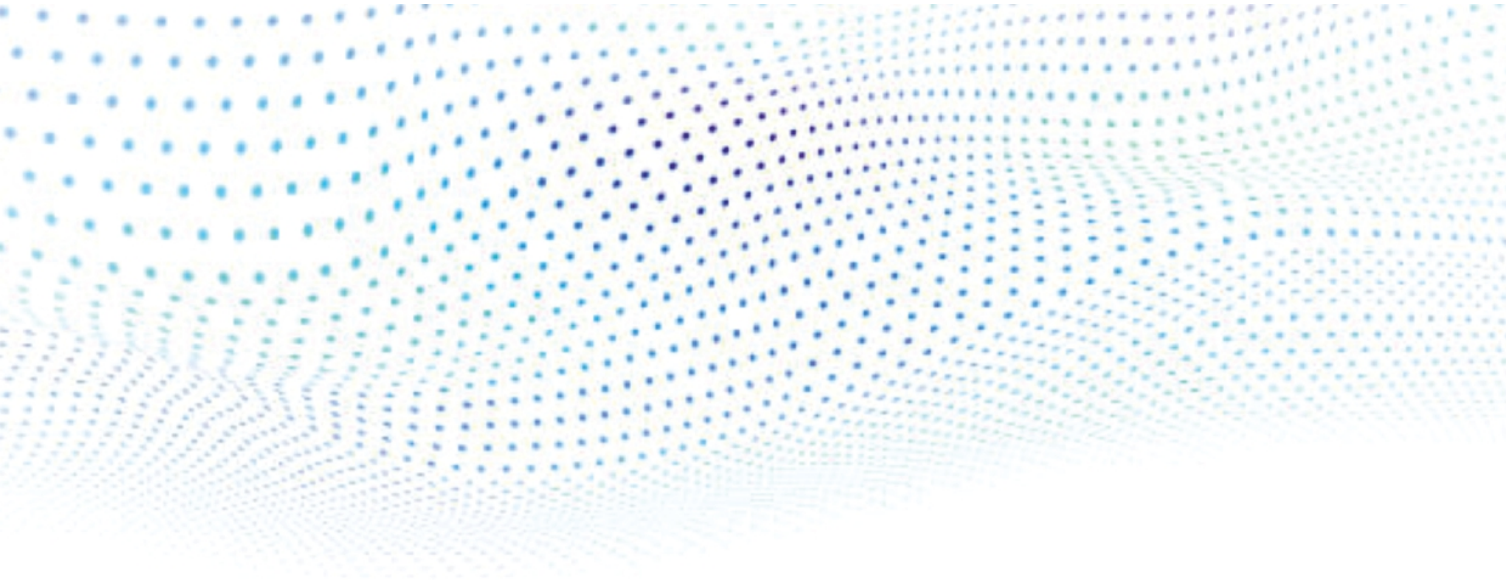


MADOFIX LOR

Epidural Kit

Epidural catheter is specially designed for continuous anesthesia and pain relief therapy. Catheter is made from unique plasticizer free polymer with excellent bio-compatibility. Flexible and traumatic soft tip with three lateral eyes. Catheter is printed to determine the depth of insertion and accurate placement of catheter in the epidural space. Luer lock twist connector. Crystal clear catheter with radio opaque line.

Sizes	
Sizes	16 & 18 G



CARDIAC



EMBOLECTOMY CATHETER

Embolectomy catheters are sterile medical devices dedicated for removal of fresh arterial embolism. Catheter is non-toxic, pyrogene free, visible under fluoroscopy.

Single lumen catheters use hand-tied balloons that are glued in three areas and pre-stretched for flexibility. These catheters are strong and able to withstand a substantial force before the balloon disengages from the catheter. Balloons are well-centered and resistant to rupture.

Sizes	
Sizes	2,3,4,5,6 & 7 FR x 80 cm



CONTROL SYRINGE

Control syringe (latex free) is specially designed for ease of use. The plunger tip and barrel are designed for consistent movement and smooth rotator action. The enhanced graduation markings increase legibility. The clear polycarbonate design allows for enhanced visual inspection and the enlarged reservoir stop is specially designed to decrease the possibility of air infusion.

Sizes	
Sizes	10ml & 12ml



MA BAND

Femoral Artery Band

Luer lock fits both ordinary syringe and control syringe. Tape with super adhesive balloon having sufficient stanching pressure

Sizes	
Sizes	20 & 24ml



ARTERIAL PUNCTURE NEEDLE

Arterial puncture is performed to obtain a sample of blood for arterial blood gas (ABG) analysis. An ABG analysis measures the pH and the partial pressure of oxygen and carbon dioxide. ABG samples are also analyzed for oxygen saturation and for bicarbonate values.

Sizes	
Sizes	



MANIFOLD

Medical's High & Medium Pressure Stop cocks and Manifolds are suitable for Cathlab and other interventional applications and are designed to withstand 500 to 1200 psi pressure. Our products are available in 2 way and 3 way configurations with rotating High Pressure adapters or a standard swivel luer lock nut.

Sizes	
Sizes	2PORT & 3PORT



ANGIO KIT

The Angio Kit contains all supplies necessary in angiography and other procedures that involve a form of catheter examination. The Angio Kit contains all supplies necessary in angiography and other procedures that involve a form of catheter examination. Advanced Features: Non-toxic.

Sizes	
Sizes	Standard



PTCA KIT

We develop, manufacture, market and support cutting edge vascular access devices and accessories to meet the clinical needs of the medical industry, particularly in the field of interventional cardiology and dialysis. Our company's engineering and applications expertise provides superior products whose progressive designs accommodate advances in medical device and whose quality anticipates the requirements of our professional clients and the patients they serve.

Sizes	
Sizes	Standard



PTCA Y CONNECTOR KIT

Hemostatic PTCA Y Connector

Clear Connector are easy, fast and accurate single handed intra vascular device for insertion of PTA Guidewire. Perfect insertion device respecting the integrity of the coated surface with combination of a hemostatic valve and an integrated valve opener. It is a clean and safe product with a minimized backflow thus limiting blood loss during the procedure.

Sizes	
Sizes	All Size

INFLATION DEVICE / KIT

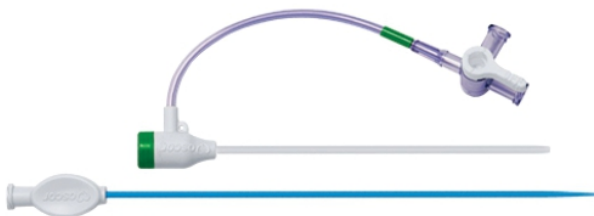


Ergonomically designed device to ensure accurate inflation of Interventional Devices. Features an angled analog gauge for better viewing of pressure readings and a luminescent dial for low-lit procedures.

- Comfortable handle grip.
- Device with large barrel to maximize vacuum for rapid and easy deflation.

Sizes	
Sizes	20ml

RADIAL SHEATH



Sheath Works : Coronary catheterization is a minimally invasive procedure to access the coronary circulation using a catheter. The procedure uses a special dye that visualizes the blood flow through the heart. The procedure begins with access to the femoral/radial artery. A needle is inserted through the skin into the femoral artery. The needle is withdrawn until a flash of blood appears.

Sizes	
Sizes	5FR, 6FR x 7cm & 11cm

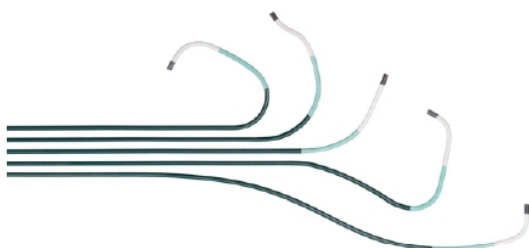
ANGIOGRAPHY CATHETER



- Tungsten layering in the distal catheter segment results in a highly radiopaque catheter tip that promotes clear fluoroscopic visualization.
- Catheter tip stability and excellent contrast flow result in a clear image of the vasculature.
- Soft tip material designed to reduce risk of trauma during contrast injection.
- Advanced tip construction provides the balance of flexibility and the shape retention required for successful access. Soft tip material reduces risk of trauma during selection and contrast injection.
- Transition to facilitate entry and crossing.
- Predictable torque response designed to facilitate exact positioning.
- Advanced braided shaft designed to promote kink resistance and push-ability to ease advancement through tortuous and distal anatomy.
- Durable, fluted hub designed to ease guidewire manipulation and provide strain relief for kink-resistant advancement.
- Wide variety of shapes provides the versatility required to meet individual clinical requirements.
- Proprietary coating enhances lubricity for sheathless insertion and superb tracking.

Sizes	
Sizes	All Size

GUIDING CATHETER



Guide catheters are required for all coronary interventions to provide access to the coronary ostium and support equipment delivery. The ideal guide provides stability for device advancement through the coronary anatomy, while minimising vessel trauma and allowing for vessel opacification

Sizes	
Sizes	All Size



PTCA BALLOON

Feather Balloon Catheter technologies deliver the exceptional performance needed to succeed in demanding cases. Experience the ultra-low profiles of FEATHER BALLOON CATHETER and how a transitionless design can provide exceptional control when accessing lesions.

Sizes	
Sizes	All Size



ASPIRATION CATHETER

Catheter which take control of the Aspiration Process in sync with the proven leader in thrombus removal. It also features a small diameter that enhances crossing and contrast visibility.

Sizes	
Sizes	6FR & 7FR



TRANSSEPTAL NEEDLE

Transseptal puncture (TSP) is a frequently performed procedure for gaining access to the left atrium for catheter ablation, hemodynamic assessment of the left heart, left ventricular assist device implantation, percutaneous left atrial appendage closure or mitral valvuloplasty during childhood and adulthood.

Sizes	
Sizes	18 G x 71cm , 89cm & 19 G x 56cm



TEMPORARY PACING LEAD

Pacing leads are designed for temporary trans venous pacing, primarily for patients with the sudden ventricular arrest. It can be used in the present and threatening bradycardia caused by conduction system disorder and acute myocardial infarction. Indications for use may procedures with risk of clinically significant decrease of heart rate and also the need to manage recurrent dangerous ventricular arrhythmias.

Sizes	
Sizes	5FR, 6FR & 7FR



VASCULAR SNARE

A vascular snare is an endovascular device that is used to remove foreign bodies from inside arteries and veins. The snare consists of several radiopaque loops of wire inside a catheter, which when extended flower out, and which collapse when withdrawn into the catheter. Newtech vascular snare have been developed to assist and designed to enhance clinical outcome in Interventional procedures and the Snare loop with 90 degree to shaft remains coaxial to the lumen to manipulate foreign objects in the cardiovascular system.

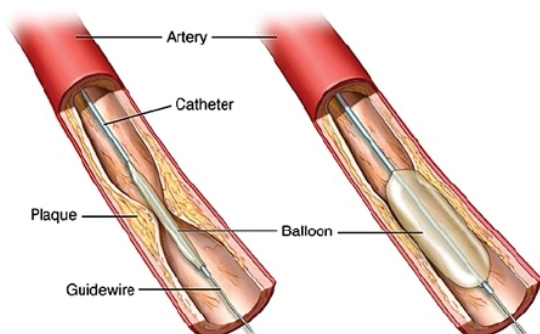
Sizes	
Sizes	All Size



MULLIN SHEATH

Transseptal technique allows left atrial access from the venous system for catheter ablation of left-sided arrhythmogenic substrates. Many physicians prefer the transseptal approach; others use it when a transaortic (retrograde) approach is contraindicated. The Mullin Sheath and Brockenbrough Needle are sterile, single-use products designed to allow access to the left atrium during electrophysiology procedures. The sterile Mullin sheath/dilator set serves as a conduit for the needle and electrophysiology

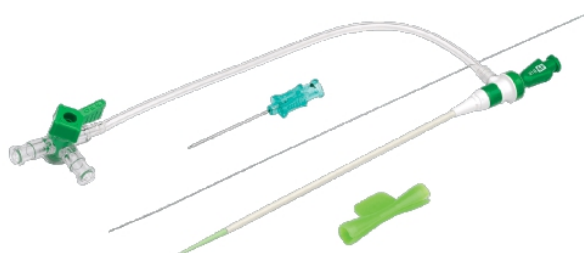
Sizes	
Sizes	6F, 7F & 8F



PTCA STENT

The stent is left in place permanently to allow blood to flow more freely. Coronary angioplasty is sometimes known as percutaneous transluminal coronary angioplasty (PTCA). The combination of coronary angioplasty with stenting is usually referred to as percutaneous coronary intervention (PCI).

Sizes	
Sizes	All Size



INTRODUCER SHEATH

Introducer Sheath offers you a blend of flexibility, support and visualization, the capability you need to respond to your challenging cases. Coronary catheterization is a minimally invasive procedure to access the coronary circulation using a catheter. The procedure uses a special dye that visualizes the blood flow through the heart. The procedure begins with access to the femoral/radial artery. A needle is inserted through the skin into the femoral/radial artery. The needle is withdrawn until a flash of blood appears.

Sizes	
Sizes	5, 6 & 7FR



CRITICAL CARE



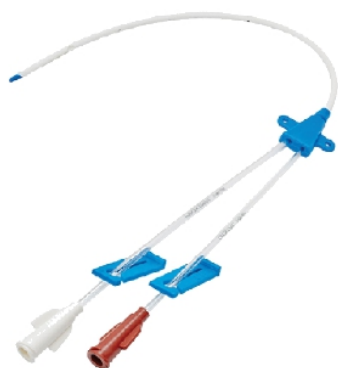
CENTROLINE MONO

Central Venous Catheters

Complete range of Central Venous Catheters, single, double triple & quadruple lumen, meeting the needs of intensive care and emergency medication

The multi lumen catheters prevent mixing of incompatible drugs thus minimizing the complications

Sizes	
Sizes	14x20cm / 16x20cm / 18x20cm / 20x16cm / 22x8cm



CENTROLINE DUO

Central Venous Catheters

Complete range of Central Venous Catheters, single, double triple & quadruple lumen, meeting the needs of intensive care and emergency medication

The multi lumen catheters prevent mixing of incompatible drugs thus minimizing the complications

Sizes	
Sizes	7x16cm / 7x20cm / 5x8cm / 5x13cm / 4.5x8cm / 4.5x13cm / 4x8cm / 4x13cm



CENTROLINE TRIO

Central Venous Catheters

Complete range of Central Venous Catheters, single, double triple & quadruple lumen, meeting the needs of intensive care and emergency medication

The multi lumen catheters prevent mixing of incompatible drugs thus minimizing the complications

Sizes	
Sizes	7x16cm / 7x20cm / 5x8cm / 5x13cm / 4.5x8cm / 4.5x13cm / 4x8cm / 4x13cm



MADOFIX LOR

Epidural Kit

Epidural catheter is specially designed for continuous anesthesia and pain relief therapy. Catheter is made from unique plasticizer free polymer with excellent bio-compatibility. Flexible and traumatic soft tip with three lateral eyes. Catheter is printed to determine the depth of insertion and accurate placement of catheter in the epidural space. Luer lock twist connector. Crystal clear catheter with radio opaque line.

Sizes	
Sizes	16 & 18 G



PRESSURE MONITORING KIT

- Choice of standard Single, Double and Triple kits
- Custom Design kit as per user specifications and requirement Option of Closed loop blood sampling kit available including needleless sampling site
- DEHP Free tubing
- Contact for non-obligatory schematic design / samples

Sizes	
Sizes	Single / Double



CLOSED SUCTION SYSTEM

Catheter suction is used to remove tracheal secretions through the endotracheal tube in mechanically ventilated patients, which may be either closed tracheal suction system (CTSS) or open one. In CTSS, the catheter is a part of ventilator circuit with no need to disconnect the ventilator

Sizes	
Sizes	8,10,12,14 & 16FR



CHEMO NEEDLE

The Wing Huber Set is composed of Bevel90° curved Huber needle and administration set consisting of Butterflywing, Y Injection Site, Clamp, Male Luer Lock connector and Pellethane PU Tubing Ideal for Continuous Infusion, Blood sampling through implantable Port.

Sizes	
Sizes	20G & 22G



SPO² PROBE SENSOR

A clip-like device called a probe is placed on a body part, such as a finger or ear lobe. The probe uses light to measure how much oxygen is in the blood. This information helps the healthcare provider decide if a person needs extra oxygen.

Sizes	
Sizes	7 & 9 PIN

BIOPSY GUN INSTRUMENTS



Disposable Core Biopsy Instrument It is versatile, easy to use and reliable, with unique rapid firing or two-stage firing feature, it represents the state of the art in automatic biopsy instruments. It can be easily operated with one hand making it ideal for procedures requiring ultrasound guidance. Color coding promotes accurate needle gauge identification & centimeter marking on the cannula helps the professionals to estimate the distance penetrated.

Sizes	
Sizes	16 Gx10 cm / 16 Gx16 cm / 16 Gx20 cm / 16 Gx25 cm
	18 Gx10 cm / 18 Gx16 cm / 18 Gx20 cm / 18 Gx25 cm

BIOSLIT

Disposable Core Biopsy Needle



Biopsy Needle with very sharp cannula for a safe and painless percutaneous insertion and Paton. Its compact, lightweight design can help to reduce tissue shear. It also provides a clear path to work through when performing multiple biopsies in the same area. Echogenic markings on cannula allow for precise ultrasound placement and centimeter depth markings assist in needle placement. Standard sizes are available.

Sizes	
Sizes	14x10cm / 14x16cm / 16x10cm / 16x16cm / 18x10cm / 18x16cm

BONE MARROW



The needle offers features that have made this bone marrow biopsy / aspiration needle a best seller for decades. The needles are available in a wide variety of sizes to meet user preference. All needles are packaged with an adapter to accommodate luer lock syringes. Lightweight handle with built-in comfort knob enables the practitioner to apply sufficient pressure without discomfort. Tapered distal tip facilitates the recovery of bone marrow samples with unaltered architecture. Single-use design helps assure sterility for every procedure and helps prevent cross contamination. Razor-sharp bevel tip allows easy coring of the bone.

Sizes	
Sizes	8G, 11G, 13G x 10cm & 15cm

EPIDURAL NEEDLE

Epidural Needle has Quality high precision Epidural Needle with unique Tuohy curve & bevel for excellent tactile feel of the different tissues.

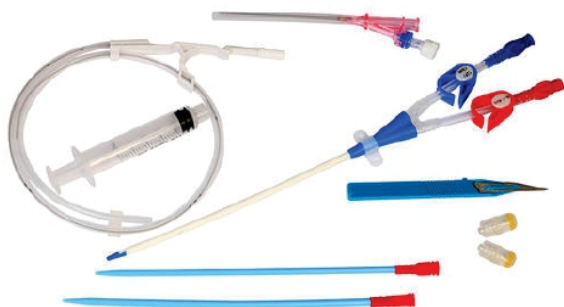
- Epidural Space Detection Device for definite visual end point.
- Highly flexible, transparent Epidural Catheter with atraumatic tip for non traumatic catheterization & minimum complication.
- Catheter Guide for easy catheterization.



Sizes	
Sizes	16G & 18G



DIALYSIS



MADHUKAR

Dual Lumen Catheter Kit

Haemodialysis Catheter Kit Straight Extensions

- Made of specially formulated and bio-compatible Polyurethane material, provides strength during insertion
- PUR material softens at body temperature to conform to the body tissues and reduces the risk of vascular trauma
- Soft flexible kink resistant]-tip guide wire made up of nitinol prevents the vessel perforation and also provides good torque to ensure firm insertion
- Radio-opaque catheter with clear, definite marking facilitates correct placement of catheter tip

Sizes	
Sizes	Adult / Pediatric



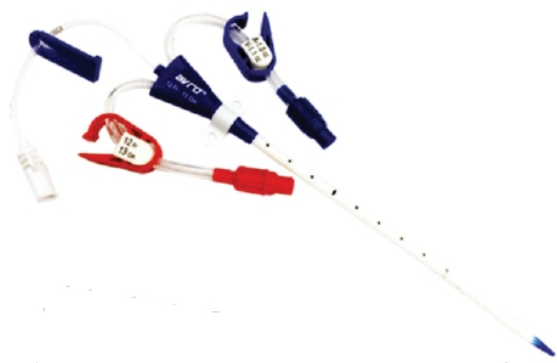
MADHUKAR

Dual Lumen Catheter Kit

Haemodialysis Catheter Kit Curved Extensions

- Made of specially formulated and bio-compatible Polyurethane material, provides strength during insertion
- PUR material softens at body temperature to conform to the body tissues and reduces the risk of vascular trauma
- Soft flexible kink resistant]-tip guide wire made up of nitinol prevents the vessel perforation and also provides good torque to ensure firm insertion
- Radio-opaque catheter with clear, definite marking facilitates correct placement of catheter tip

Sizes	
Sizes	Adult / Pediatric



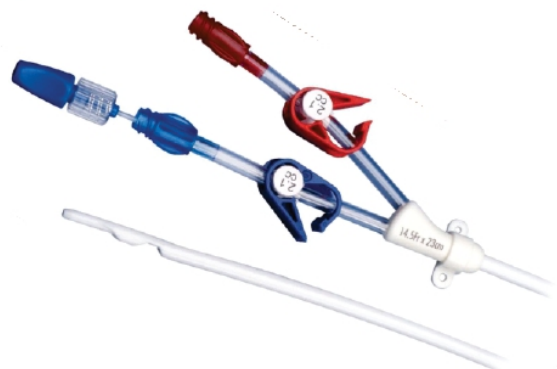
MADHUKAR

Triple Lumen Catheter Kit

Haemodialysis Catheter Kit

- Made of specially formulated and bio-compatible Polyurethane material, provides strength during insertion
- PUR material softens at body temperature to conform to the body tissues and reduces the risk of vascular trauma
- Soft flexible kink resistant]-tip guide wire made up of nitinol prevents the vessel perforation and also provides good torque to ensure firm insertion
- Radio-opaque catheter with clear, definite marking facilitates correct placement of catheter tip

Sizes	
Sizes	Adult / Pediatric



Long Term Dialysis Catheter Kit

UNEPERM dialysis Catheter is a reliable long-term dialysis catheter that consistently delivers high flow rates with low venous and arterial pressures.

Sizes	
Sizes	Adult / Pediatric

A.V.Fistula Needle Set



Fistula Needle is used to access the blood vessels for dialysis process. Ultrathin tube and sharp needle reduce pain on insertion. Soft and elastic tubing is convenient for the patient. Rotatable and fixed wings are easy to handle and control. Screw adapter well with blood lines. A.V. Fistula Needle is made to satisfy all clinical requirements.

Sizes	
Sizes	15G, 16G & 17G



TRANSDUCER PROTECTORS

Transducer Protectors are an effective barrier against bacteria and they are used in hemodialysis blood-lines. Our Transducer Protectors are manufactured with fully automatic technology. The membranes are ultrasonically welded and parts are tested with automatic testing equipment in order to guarantee superior quality of the parts. It can be fitted in any blood line or other medical device, covering the market requirement.

Sizes	
Sizes	Standard



GUIDE WIRE

Guidewires, Uncoated Guidewires, Nitinol Guidewires, Hydrophilic Guidewires and Lunderquist Guidewires. Our Guidewires are available with J tip or straight tip or double distal ends. We have SS Core Stiff Guidewires, Extra Stiff Guidewires and Super Stiff Guidewires to meet every Clinical requirement of Professionals. We do have Kink Resistive guidewires as well. Our Guidewires range is available from diameter 0.018" to 0.038", which supports length up to 70cm to 260 cm

Sizes	
Sizes	0.018, 0.025, 0.032, 0.035, 0.038



INTRODUCER NEEDLE

Extremely low insertion forces
Easy access and reduce tissue trauma.
Smooth Guidewire Insertion
Safety Cover for Unwanted Hazard
Variety of sizes, lengths and shapes.

Sizes	
Sizes	18G & 20G



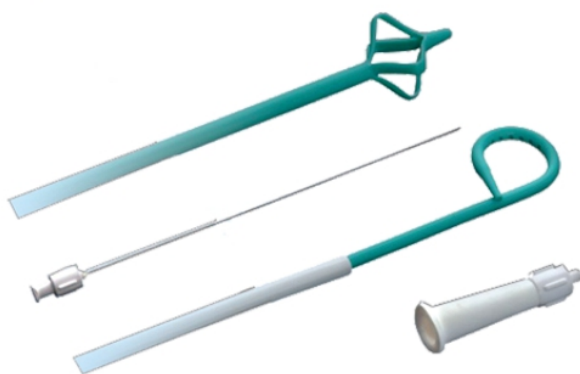
UROLOGY



DOUBLE J STENT

- D.J. Stent used for temporary & prolonged internal drainage from ureteropelvic junction to the bladder.
- Made of superior grade poly-urethane material.
- Complete radio opaque stent for x ray visualization.
- Black line on the stent indicates the direction of coil after withdrawal of guidewire.
- Marking at every cm. and double marking at every 5cm.
- Implant tested with an extremely low encrustation tendency.

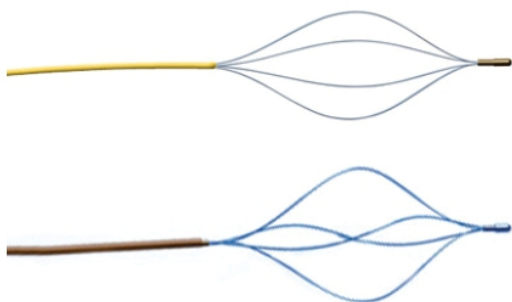
Sizes	
Sizes	3.0, 3.5, 4.0, 4.5, 5.0, 5.5, 6.0 & 7.0 FR x 16 & 26 cm



P.C.N CATHETER PIGTAL

Pigtail catheter insertion is an effective and safe method of draining pleural fluid. We encourage its use for all cases of pleural effusion requiring chest drain except for empyema and other loculated effusions that yielded low success rate.

Sizes	
Sizes	8FR to 18FR



STON BASKET NITINAL & S S

Basket have been developed to assist and designed to enhance clinical outcome in Interventional procedures. These baskets are used to retrieve the foreign objects in the Kidney stones system.

Sizes	
Sizes	3wire & 4wire

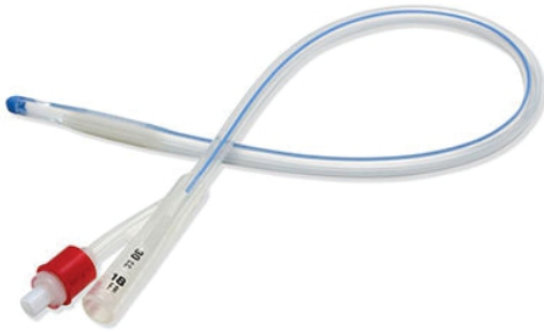


PENILE CLAMP

Penis clamp is an external penis compression device that treats male urinary incontinence. Incontinence clamps for men are applied to compress the urethra to compensate for the malfunctioning of the natural urinary sphincter, preventing leakage from the bladder with minimal restriction of blood flow.

Sizes	
Sizes	Standard

ALL SILICON FOLEY CATHETER



Foley Balloon Catheter

Made of Silicone elastomer bonded with latex rubber, which can be retained in body for longer duration Symmetrical Foley balloon to ensure upright tip in urinary bladder for proper drainage of urine Two lateral eyes to prevent the risk of injury and encrustation Hard plastic valve for trouble free inflation and deflation of balloon Color-coded for easy identification of size

Sizes	
Sizes	2 Way 6FR to 24FR 3 Way 18FR to 24FR

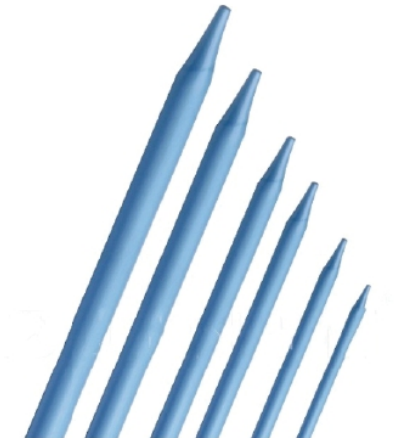
MADODRAIN



- Penile Sheath/External Catheter.
- Male Cath is specially designed for urine incontinence for day and night use in male patients.
- Manufactured from 100% latex for soft and gentle feel.
- Provided with soft adhesive coated strip for proper fixing on the penis.
- Proximal end is designed for safe and easy connection to urine bag/leg bag.

Sizes	
Sizes	20mm , 25mm, 30mm & 35mm

FASCIAL DILATOR SET



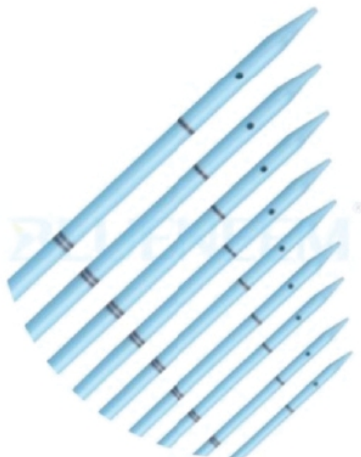
Used for fascial dilation, intended for stretching or enlarging the fascial tissue covering a cavity, tract or opening prior to a diagnostic or interventional procedure.

- Gradual tapered end & smooth surface for atraumatic entry
- Also available with hydrophilic coating for ease of introduction
- Optimal radiopacity for better visualization

Sizes	
Sizes	All Size

URETHRAL DILATOR SET

Used for dilation of the Urethra.



- Tapered end for atraumatic entry during dilation
- Smooth surface for introduction
- Optimal radiopacity for visualization
- To be used for sequential dilation
- Side hole for drains!

Sizes	
Sizes	All Size



E.N.T



MEDOCEL

Nasal Pack with String

Nasal Packing is made from soft, absorbent and polyvinyl alcohol (PVA) sponge. When the dressing contacts with blood, the expanded sponge and pressure on bleeding part.

Sizes	
Sizes	8cm & 10cm & Airway with String 8cm



NASOSPLINT

Aluminum External Nasal Splint

Background/Objectives: Plaster of Paris (POP), thermoplastic splints and self-adhesive padded aluminium splints are the most common splinting methods used after reduction of fractured nasal bones and rhinoplasty

Sizes	
Sizes	Standard



MEDOWICK

Ear Wick

An ear wick can be inserted between the swollen canal walls to help instill medication and keep the medication around longer to assist with healing. An ear wick is hard when you place it in the ear, and it softens and expands as soon as it is moistened.

Sizes	
Sizes	9mmx15mm



MADOVENT

Ear Ventilation Tube Shepherd

An ear ventilation tube (or vent tube) is a very small tube that's placed in the eardrum. It's also called a myringotomy tube, tympanostomy tube, or pressure equalization (PE) tube. Vent tubes let fluid trapped behind the eardrum drain, which helps prevent ear infections

Sizes	
Sizes	Standard



TRANSFUSION

M-FLON / N-FLON

I.V Canula

Quick Flashback instantly confirms successful venepuncture
 CAdva Needle technology enhances success in first-prick of needle
 Instant confirmation of blood flow along catheter body increases clinician's ability to successfully access the vein
 Advance Polyurethane catheter material ensures better bio-compatibility & longer indwelling time



Sizes	
Sizes	18G, 20G, 22G, 24G & 26G

SARGEN I.V SET NON - VENTED

Non-vented IV sets are just the opposite of vented IV sets – they don't have any vents in the tubing. Non-vented IV sets work great with flexible plastic containers like the Homepump Eclipse. Non-vented tubing must also be primed to rid the tube of air. Non-vented tubing allows a vacuum to be created within the plastic IV bag so that it can collapse as it is emptied.



Sizes	
Sizes	Non – Vented

VENO-LINE

Three Way Stop Cock with Extension Tube

- Low pressure large bore extension line.
- Provided with male luer lock at one end and 3-way stop cock at other end enabling the user to run two lines simultaneously.
- Luer lock connector provide secure fitting.



Sizes	
Sizes	10, 25, 50, 100, 150 & 200 cm

P.M. LINE

- Small bore high pressure extension line.
- Suitable for high pressure monitoring and for connection between syringe infusion pump and patient.
- Provided with male luer lock at one end and female luer lock at other end and fits all standard equipment.
- Luer lock connectors provide secure fitting.
- Sterile, individually packed in Blister pack.
- Box of 20/ Master box of 400.



Sizes	
Sizes	100, 150 & 200 cm



MADOFLOW REGULATOR

I.V. Flow Regulator Extension Sets

Precise flow rate control of I.V. fluids with range of 5 to 250 ml/hr

With "Y" injection port for intermittent medication

Male luer connector at one end and female luer connector at other end

Standard tube length : 20 cm without "Y" site & 40 cm with "Y" site

Sizes	
Sizes	Standard



MADOSPLINT

I.V Splint

The product is made of high quality of pvc . The product is in one side pvc tube and other side sponge material for the comfort . This product is placed below hand while putting the i.v.cannula so that i the cannula can be properly placed

Sizes	
Sizes	1, 2, 3, 4 & 5



I.V. Fix Cannula Fixation Non Woven Adhesive Dressing

- * Non woven Cannula fixation dressing with strip
- * Highly absorbent low Adherent
- * Excellent Cannula stability
- * Dressing allows air & humidity to pass freely
- * Sterile & Packed in paper pouch
- * Indication : Non woven Dressing for Cannula fixation

Sizes	
Sizes	6cmx7cm



MADODERM

- Tranparent Polyurethane I V Dressing Fram Style
- High Moisture Vapour Transmission Rate Film
- Water Proof I V Dressing
- Excellent catheter stability
- Tranparent film allows inspection of infection if any without need for dressing removal
- Sterile and Packed in peel pouch
- Indication : Transparent film dressing for catheter fixation

Sizes	
Sizes	1623 (6cmx7cm)



SURGERY



ABS PONGE

Absorbent Gelatine Sponge

Absponge is an absorbable surgical gelatin sponge, widely used as a haemostatic in abdominal, dental, ENT, gynaecological, neuro and onco surgeries. Manufactured from highly purified neutral gelatin with hemostatic capabilities. Designed to control blood oozing in instances of haemorrhage from multiple small vessels. Completely absorbed in 4 to 5 weeks with no residue or encapsulation. Non-toxic, non-allergic, non-immunogenic and non-pyrogenic.

Sizes	
Sizes	80mm x 50mm x 10mm



VACCU SUCTION SET

Yankauer Suction Set

- Suitable for pre-operative removal of secretion and body fluids
- Cut to fit funnel connector to suit different suction pump lines at proximal end. Also available with Kapkon and Conical connector at proximal end
- Standard funnel connector at distal end of tubing to connect Yankauer Handle
- Yankauer Handle is open end—with 4 lateral eyes
- Yankauer Handle available in standard or crown tip with or without vacuum thumb control
- Soft and kink resistant ribbed PVC tubing.

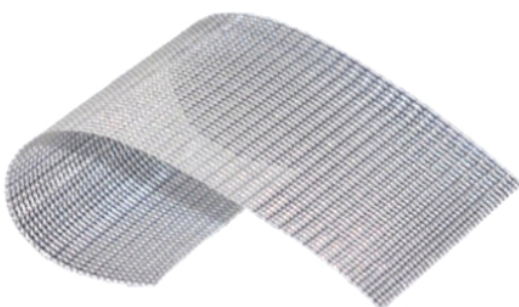
Sizes	
Sizes	Standard



MADOVAC SET

- Close wound drainage device under negative pressure with option to use one or two catheters post-operatively.
- Multiperforated catheters provided with radio opaque line and satin smooth eyes for efficient trauma free performance.
- Graduated bellow allows user to measure drainage volume.
- Different catheter sizes available to meet moderate to heavy drainage needs.

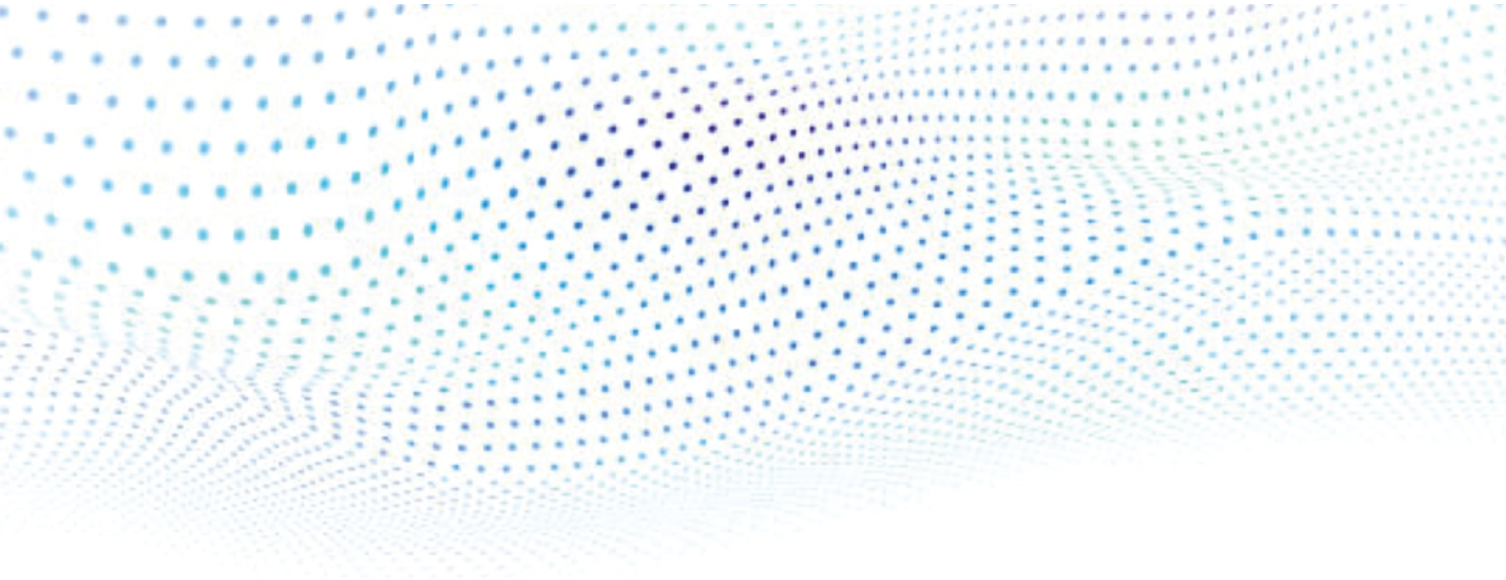
Sizes	
Sizes	10G, 12G, 14G, 16G, 18G



MADOLINE MESH

A hernia mesh serves as a flexible scaffold in hernia repair surgery. It has the ability to reinforce the muscle walls and also prevent the organs from coming through. As such, it prevents the patient's condition from worsening. During the hernia surgery, the surgeon places the mesh on top of the open hernia.

Sizes	
Sizes	6cm x 11cm / 7.6cm x 15cm / 15cm x 15cm / 30cm x 30cm



VASCULAR



SARGEN COMPRESSION STOCKING

Knee High Class—II

Knee High Compression Stocking therapeutic compression socks (for varicose veins): Made by special elastic Lycra fibre. Forming a pressure gradient from top to bottom with the pressure depletion on the leg to cope with the venous hypertension inside the vein, facilitate the haemal circumfluence, and remedy the varicose veins.

Sizes	
Sizes	S/M/L/XL/XXL/XXXL



SARGEN COMPRESSION STOCKING

MID Thigh Class—I

Mid Thigh Compression Stocking therapeutic compression socks (for varicose veins): Made by special elastic Lycra fibre. Forming a pressure gradient from top to bottom with the pressure depletion on the leg to cope with the venous hypertension inside the vein, facilitate the haemal circumfluence, and remedy the varicose veins.

Sizes	
Sizes	S/M/L/XL/XXL/XXXL



SARGEN ANTI EMBOLISM

Knee High Class—I

The product prevents the forming of deep venous thrombosis by the provision of declining pressure to the patient's lower extremity facilitating the haemal circumfluence of the vein.

Sizes	
Sizes	S/M/L/XL/XXL/XXXL



SARGEN ANTI EMBOLISM

MID Thigh Class—I

The product prevents the forming of deep venous thrombosis by the provision of declining pressure to the patient's lower extremity facilitating the haemal circumfluence of the vein.

Sizes	
Sizes	S/M/L/XL/XXL/XXXL



STERILIZATION



STERILIZATION REELS

Sterilization reels and pouches are used in preventing ink pigmentation. – They have an extra reinforced layer film used to avoid tear during openings. – They have protective dust covers for increased protection of sterile packs during distribution and storage. – They are used to package extra-long products.

Sizes	
Sizes	50mm, 75mm, 100mm, 125mm, 150mm, 200mm, 250mm & 300mm x 200mtr



AUTOClave TAPE

Autoclave tape is an adhesive tape used in autoclaving (heating under high pressure with steam to sterilise) to indicate whether a specific temperature has been reached. Autoclave tape works by changing color after exposure to temperatures commonly used in sterilization processes, typically 121°C in a steam autoclave.

Sizes	
Sizes	18mm x 50mtr



ETO TAPE

ETO Sterilizer Indicator Tape is designed to indicate whether a specific temperature has been reached for sterilization identification on items exposed to ETO.

Sizes	
Sizes	18mm x 50mtr



UNIVERSE
SURGICAL EQUIPMENTS CO.

Address:

No. 86, Old No. 21, Nyniappa Naicken St, Near Kandaswamy Temple, Rattan Bazaar,
Park Town, Chennai - 600003

Phone :

+91-988487 4313 / +91 98407 45230

Email:

universesurgical@gmail.com