

# OLYMPIA CLEAR



## Specifications

Input Voltage	230V AC 50 Hz
Operating Temperature	-20 °C to 50 °C
Ingress Protection	IP 40
Colour Temperature	3000 K/4000 K /6000 K
Colour Rendering Index	> 70
Lifespan	Typically 25, 000 Hours
Power Factor	> 0.9
Safety Standard	EN 60598
EMC / EMI Standard	EN 61547/EN 55015
Harmonics	EN 61000-3-2 and 61000 - 3- 3

## Product Description

A low bay cousin to the excellent High bay light. Provide good light levels and excellent distributions.

## Other Features

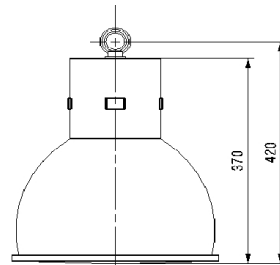
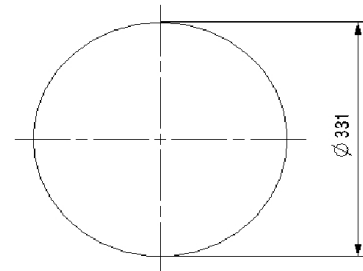
Dimmable (Optional)

Product Code	Input Power	Lumen Output	Replacement of	Size ( Ø x H)
XH 01 12	50 W	2200	150W MH	Ø331 x 420

## Mechanical

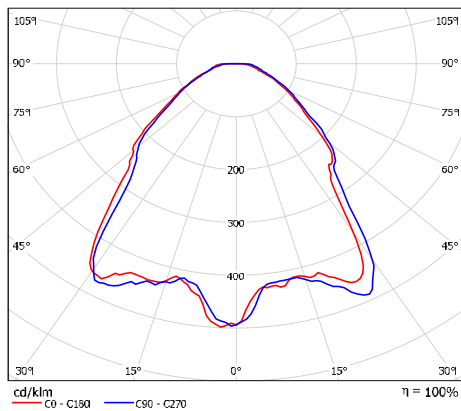
Housing	Powder Coated Die cast Aluminium
Optics	Polycarbonate Diffuser
Installation	Suspended

## Dimension Drawing



All dimensions in mm

## Polar Candela Distribution



## Application Area

Hotels, Hospitals, Shopping Malls, Airports, Industrial Sheds

