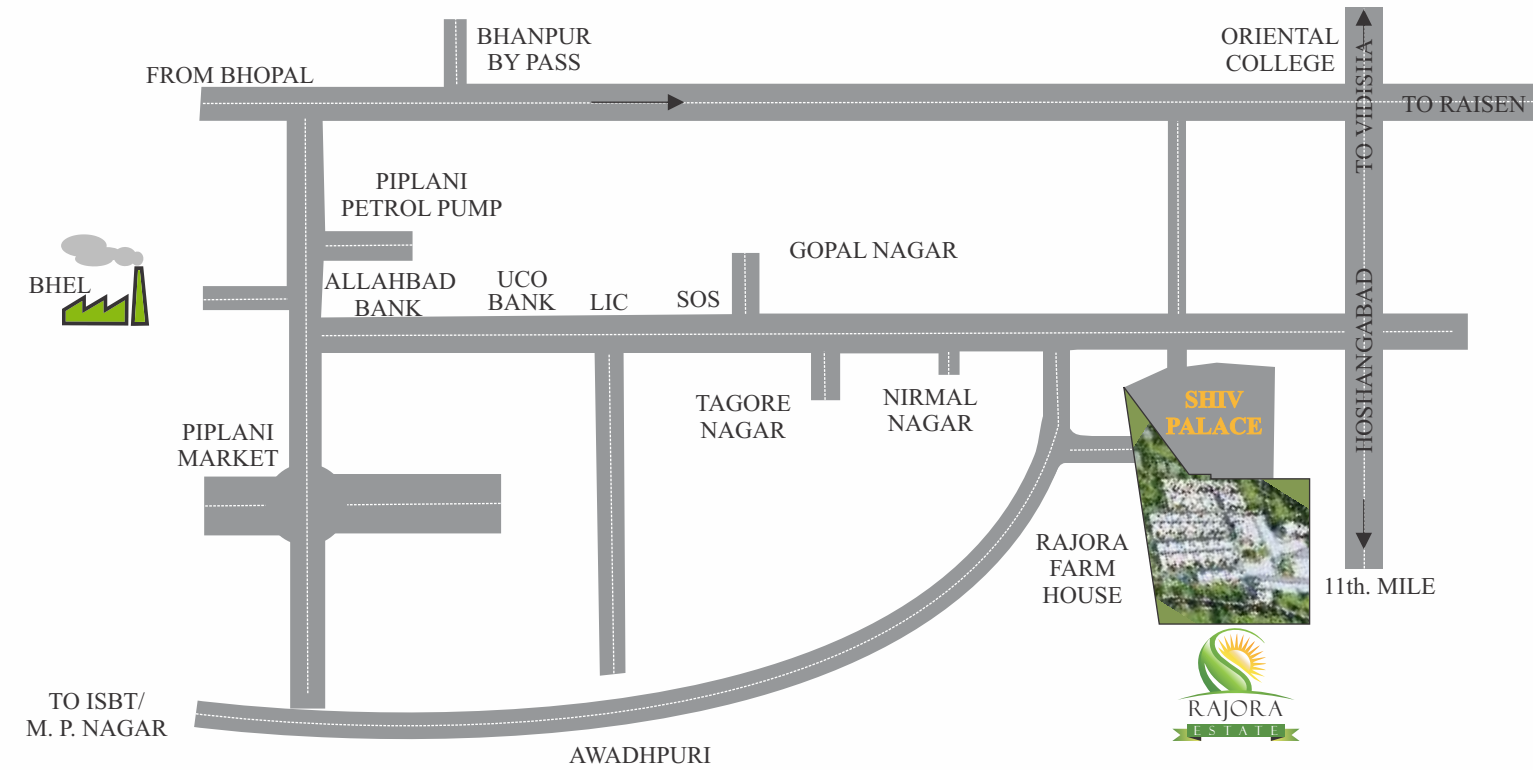


Location Plan



Site address : Rajora Estate, Rajora Farm House, Khajuri Kalan Road, Piplani, BHEL, Bhopal (M. P.)

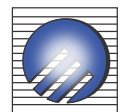
For booking details contact:- +91-7828888375, 9303108731, 9893429737

A project by



Office address :
A-01, Shiv Palace,
Rajora Farm House,
Khajuri Kalan Road, Piplani,
BHEL, Bhopal (M. P.)

Architect:



Astral Group

Architectural Consultancy Service

55,56-B JANKI NAGAR, CHUNABHATTI BHOPAL
PHONE: 0755-242425 MOBILE: +91-9425300258
email: astralgroup2009@gmail.com

Designs & Concepts



MASS INFRA TECH
BHOPAL

8818898383; 0755-3194222



A Lifestyle that unfolds Luxurious Living





Towards development
Rajora Infra Homes

Rajora Infrastructure has embarked as a modest-sized but focused construction company of today's era. A strong, consistent, multifaceted and vibrant organization committed to utmost customer satisfaction. We bank on innovation, teamwork, a high degree of technical excellence and maintain the finest standards of business practice in our entire endeavors. Long-term relationships and prime customer satisfaction are, and will always be our primary goals.





△ Magnificence
brilliance in spectacular array of
Luxury Bungalows





Precise Planning
Elegant Aesthetics
Classic Craftmanship

Classic craftsmanship, precise planning clubbed with elegant aesthetics describe the majestic living finesse that makes Rajora Estates the most brilliant of its kind.





Rajora Estates feature-rich residential apartments are all set to take style, comfort and happiness to newer realms.





Transform mundane aspects
of daily life to priceless moments.



Amenities...

- Grand entrance gate with security room
- Adequate water supply through sump-well
- Wide concrete/pevord roads
- Elegant street lights
- Beautifully Landscaped garden
- Lush green eco-friendly environment
- Three tier security system with CCTV surveillance
- Specially designed Children's Play area
- Video door phones with intercom facilities
- Sand-pit
- Jogging track
- Underground modern sewage disposal system
- Vastu based well planned colony
- Approved project for loan from leading Banks
- Shopping center
- Pollution free atmosphere
- A well developed campus with suitable security arrangements and boundary wall



Specifications...



BATHROOM

- Neat toilet designs for best space utilization
- Ceramic designer tiles in all bathrooms
- A-class counter-top basin and single lever fitting
- Wall-mounted WC with concealed cistern.
- Dual flush plate and soft closing seats
- High quality health facet and a quarter turn tap in all bathrooms
- Anti-skid flooring tiles
- Aluminium awning windows with provision for exhaust



BEDROOM

- Grand bedroom door with both sides laminated & wooden door frame
- Stainless steel cylindrical locks
- I.S.I. standard door fixtures
- Internal walls with smooth finish and high quality paint
- Television and telephone points in the master bedroom
- Branded modular electrical fitting
- Sufficient light points on the ceiling in all bedrooms
- Aluminium sliding doors and windows with mosquito net
- Flooring of 2'x2' vitrified tiles with skirting



DRAWING AND DINING

- Grand hall
- Elegant main door with both sides laminated & wooden door frame
- I.S.I. standard door fixtures
- Flooring of 2'x2' vitrified tiles with skirting
- Internal walls with smooth finish plaster and high quality paint.
- Three track aluminium sliding windows with mosquito mesh
- Television and telephone points
- Branded modular electrical fitting
- Sufficient light points on the ceiling
- Internal wiring for inverter



KITCHEN

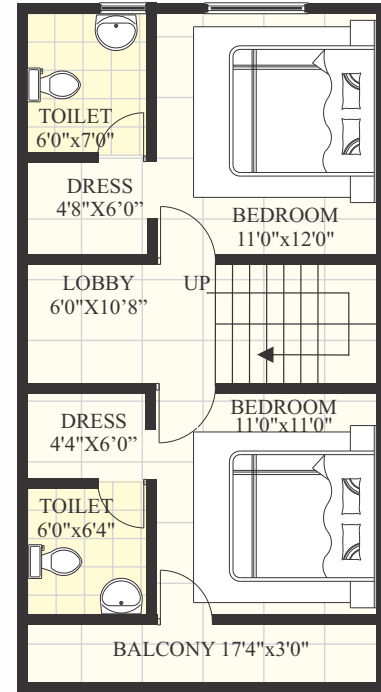
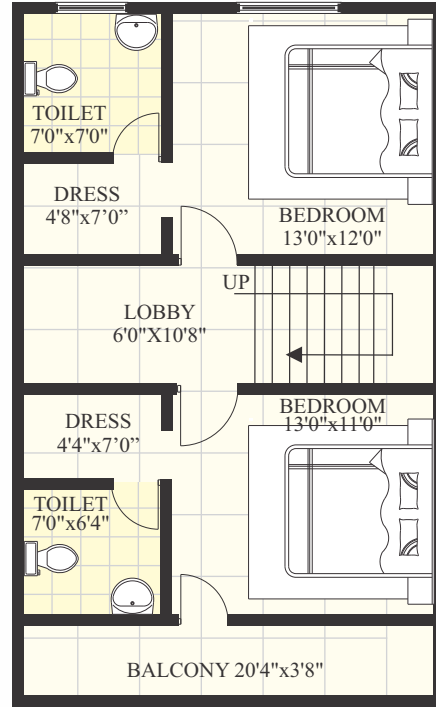
- Modular Kitchen (Optional)
- Meticulous, modern kitchen layouts for the best comfort
- Sufficient power points for appliances
- Ceramic tiles above counter
- Well-laid platform with marble/granite top
- Stainless steel sink
- Anodized aluminium sliding windows with mosquito mesh
- Flooring of 2'x2' vitrified tiles with skirting
- Utility Sapce
 - Ceramic tiles up to balcony height and antiskid ceramic tiles on the floor
 - Provision for washing machine




RAJORA
ESTATE



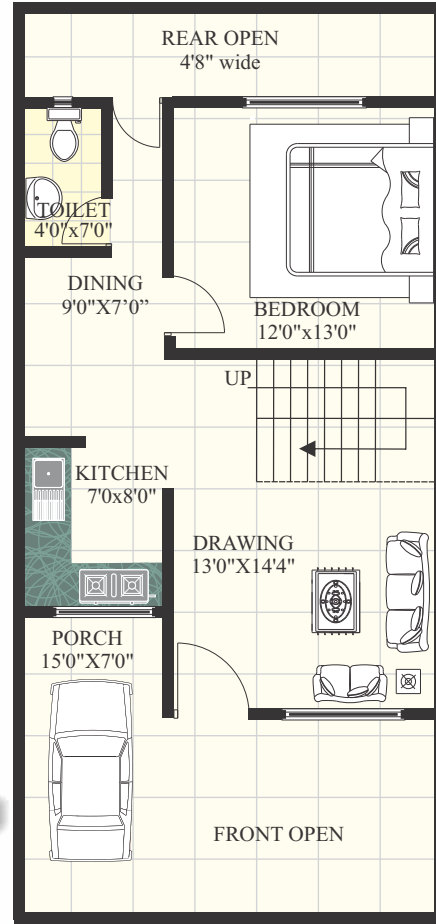
First Floor



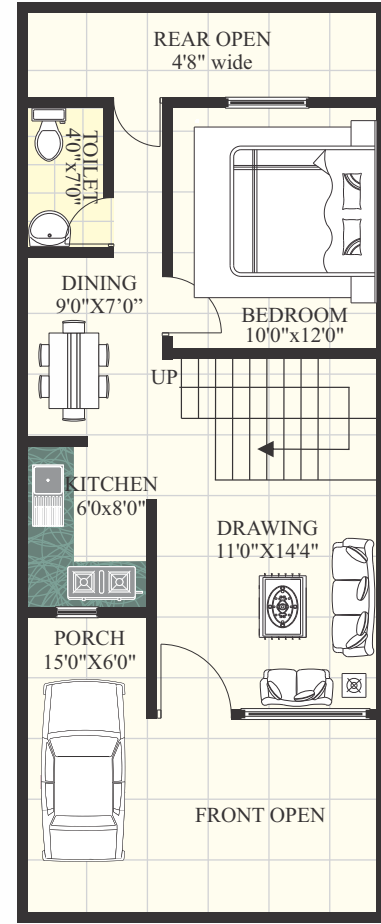
First Floor



Ground Floor



Type - A
Plot Area : 945 Sq.Ft
SBU Area : 1442 Sq.Ft



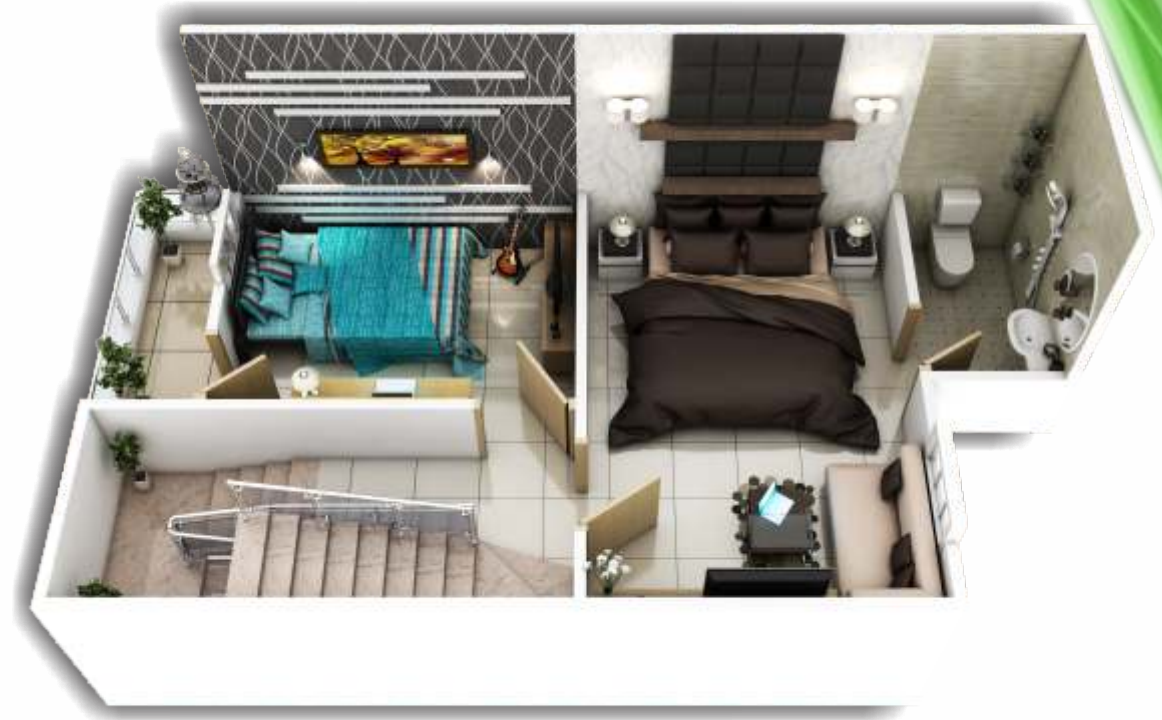
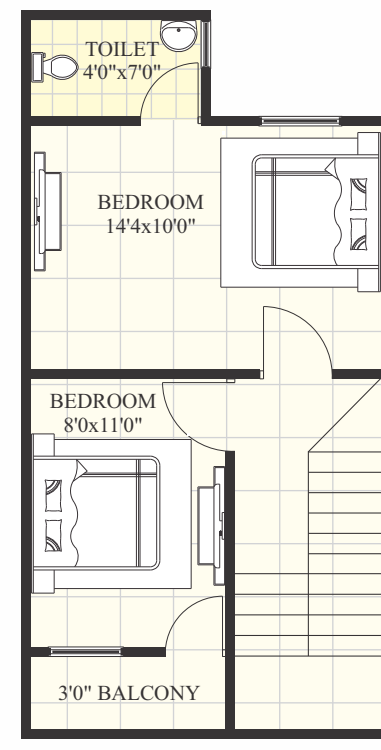
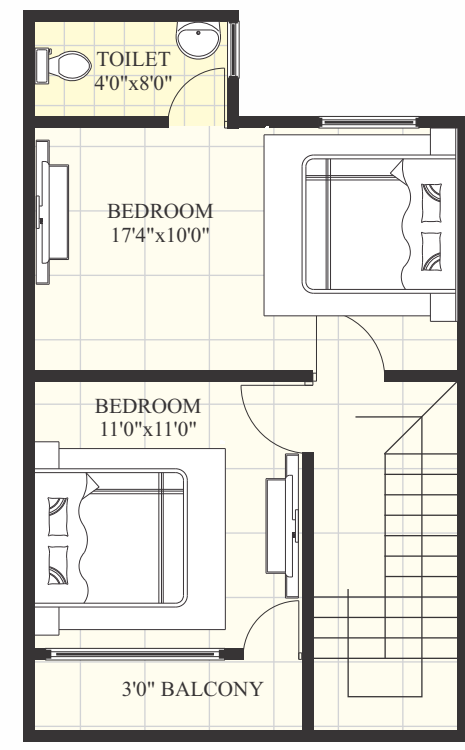
Ground Floor



Type - B
Plot Area : 810 Sq.Ft
SBU Area : 1212 Sq.Ft



First Floor

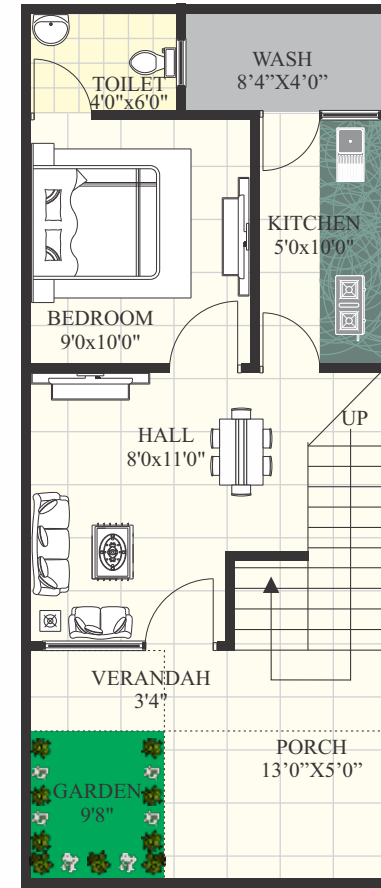
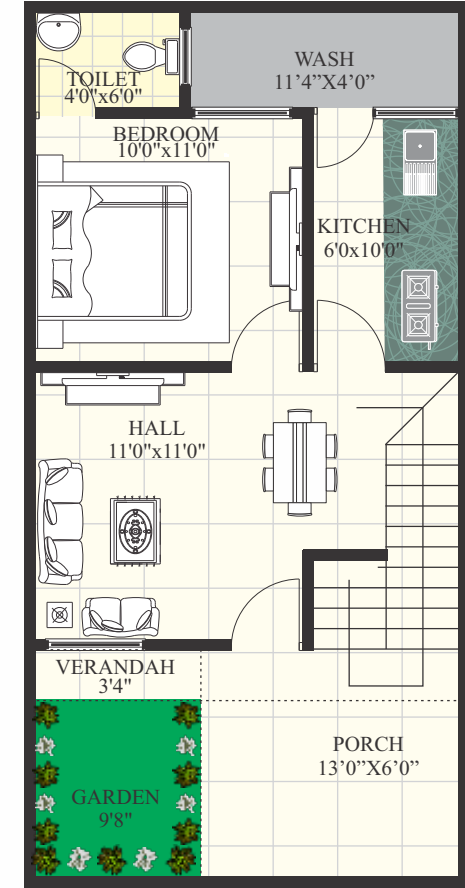


First Floor



Type - C
Plot Area : 648 Sq.Ft
SBU Area : 987 Sq.Ft

Ground Floor



Ground Floor

Type - D
Plot Area : 540 Sq.Ft
SBU Area : 826 Sq.Ft