

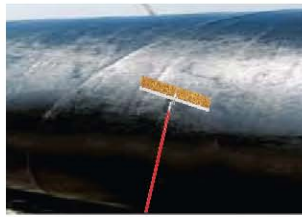


**Inbuilt Battery Model
VHD**



**In Plant Model
VHDS**

Application



HOLIDAY DETECTOR

KEY FEATURES OF VHD

- Portable size
- Insulated cabinet
- Digital / Analog actual set Voltage display
- Inbuilt Jeep Meter
- Pulse DC Output Voltage
- 12 months Warranty
- Built-in automatic battery charger circuit
- Audiable & Visual detecting holiday indicators
- Multiple Electrode available as per requirement
- Calibrated and tested as per IS:1876
- Assured Quality which complies ISO 9001:2008

KEY FEATURES OF VHDS

- Portable size
- Digital actual set Voltage display
- Inbuilt Jeep Meter
- Pulse DC Output Voltage
- 12 months Warranty
- Audiable & Visual detecting holiday indicators
- Multiple Electrode available as per requirement
- Input Fuse Protection
- External Hooter Facility
- Calibrated and tested as per IS:1876
- Assured Quality which complies ISO 9001:2008

APPLICATION

- To Test insulative coatings like coal tar, paint, polyurethane, asphalt, PVC coatings, glass coating, resin coating etc.
- Useful to detect pinholes or defective point on pipeline, fire line, tanks or pillings of conductive surface.

INTRODUCTION

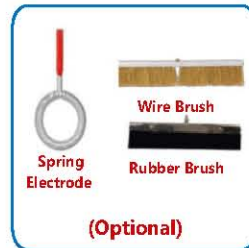
Veer Electronics Holiday Detector is capable to detect any pinhole or defects in anticorrosive coating on metallic pipes/surfaces. The pipe is connected to earth and electrode charged to high tension is moved over coating. If any pinhole or defective point is detected on coating, high voltage spark occur on pipe or surface of testing. At same time electronic buzzer also gives audio indication & Fault LED glows as visual indication of fault.

SPECIFICATIONS

MODEL-Digital Read out	VHD-30D	VHD-20D	VHD-10D	VHD-05D	VHDS-30D	VHDS-05D
Range (Voltage)	3KV - 30KV	2.5 KV - 20KV	2KV - 10KV	1.5KV - 5KV	3KV - 30KV	1.5KV - 5KV
Coating Thickness (Depend on Material)	1mm - 9mm	0.5mm - 5.5mm	0.5mm - 2.5mm	0.3mm - 1mm	1mm - 9mm	0.3mm - 1mm
Accuracy	3% on FSD					
Charging Input	AC 230V ± 10% @ 50 Hz / AC 110V ± 10% @ 60 Hz (on request)				Auxiliary Power Supply	
Charging Time	15 Hrs Approx.					
Duration of Operation	24 Hrs in normal use after full charging					
Battery	12 Volt / 7Ah Dry Rechargeable Battery					
Battery Life	200 Cycles / 2Years approx.					
Resolution	Range setting using pot, resolution 0.1KV					
Display	3 Digit display (For digital model only)					
Size of Instrument (L x B x H)	265mmX145mmX255mm approx.				358mmX339mmX193mm approx.	
Weight of Instrument	6.5 kg approx.				7 kg approx.	
Warranty	One Year against manufacturing defects ex- works Gujarat, India					

NOTE:- 1. Above all Specifications are subject to change without prior notice.

ACCESSORIES



FEW OTHER PRODUCTS AT A GLANCE



 **VEER ELECTRONICS**
LET'S SAVE ENERGY AN ISO 9001:2008 CERTIFIED COMPANY

Plot No. B-45, GIDC Electronics Estate, Sector-25,
Gandhinagar - 382024, Gujarat, India.
Phone : +91 - 79 - 23 28 92 25 Fax : +91 - 79 - 23 28 92 26
Mobile : +91 - 98 79 20 34 86 / 80 38
Email : info@veerelectronics.com, veer@veerelectronics.com
Web : www.veerelectronics.com, www.veerpoweranalyzer.com

NSIC CERTIFIED CO. **CE** **D&B**

Scan to Reach us



Authorized Dealer / Distributor