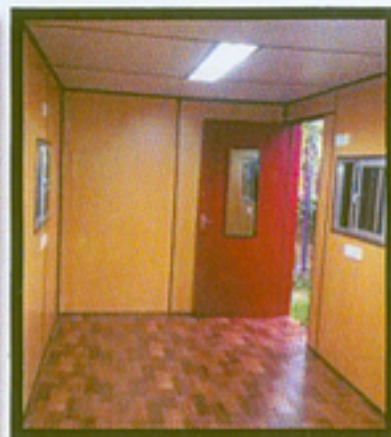




PRISHA CONTAINER LINES

BUILDING BLOCKS TO A BETTER TOMORROW





ABOUT US

- PRISHA CONTAINER LINES is a leading manufacturer of a wide range of porta cabins, shipping container site offices and portable prefabricated structures across India. These find application in meeting the on-site demands of construction sites, security facilities, factories, toll booths and other similar areas where permanent construction is not feasible.
- We offer a broad spectrum of services including consultation, designing and fabrication of units as per client requirement and transportation to the desired location.
- Our expertise includes understanding our customer's business needs in order to formulate a comprehensive integrated solution which will help render all prefab related services from a single window.
- PRISHA CONTAINER LINES is a leading manufacturer of Portable Container Toilets of various sizes.



WHY USE SHIPPING CONTAINERS ?

- Multipurpose Usage
- Mobile / Movable
- Strong and Durable
- Easily joined and stacked
- No Foundation Required
- Reduces Operational Cost





OFFICE CONTAINER 20' – BASIC

Size: 20' x 8' x 8.5'

Office Container Includes

- 2 X Aluminum Slider Window with rain shade & MS Grill outside
- 1 X Main door with rain shade
- 1 X AC provision
- 2 X Tube light
- All electrical work
- Glass wool insulated wall and roof
- Paint from outside
- Vinyl flooring





OFFICE CONTAINER 20' – WITH WORKSTATIONS

Size: 20' x 8' x 8.5'

Office Container Includes

- 2 X Aluminum Slider Window with rain shade & MS Grill outside
- 1 X Main door with rain shade
- 1 X AC provision
- 2 X Tube light
- 2 X Fan
- 4 X Workstation with overhead cabinets
- All electrical work
- Glass wool insulated wall and roof
- Paint from outside
- Vinyl flooring





OFFICE CONTAINER 20'- WITH WORKSTATIONS + CABIN

Size: 20' x 8' x 8.5'

Office Container Includes

- 2 X Aluminum Slider Window with rain shade & MS Grill outside
- 1 X Main door with rain shade
- 1 X AC provision
- 2 X Tube light
- 2 X Fan
- 4 X Workstation with overhead cabinets
- 1 X Cabin with overhead cabinets
- All electrical work
- Glass wool insulated wall and roof
- Paint from outside
- Vinyl flooring





OFFICE CONTAINER 40' HC – BASIC

Size: 40' x 8' x 9.5'

Office Container Includes

- 4 X Aluminum Slider Window with rain shade & MS Grill outside
- 1 X Main door with rain shade
- 1 X AC provision
- 4 X Tube light
- All electrical work
- Glass wool insulated wall and roof
- Paint from outside
- Vinyl flooring





OFFICE CONTAINER 40' HC – WITH WORKSTATIONS

Size: 40' x 8' x 9.5'

Office Container Includes

- 4 X Aluminum Slider Window with rain shade & MS Grill outside
- 1 X Main door with rain shade
- 1 X AC provision
- 4 X Tube light
- 4 X Fan
- 8 X Workstation with overhead cabinets
- All electrical work
- Glass wool insulated wall and roof
- Paint from outside
- Vinyl flooring





OFFICE CONTAINER 40'– WITH WORKSTATIONS + CABIN

Size: 40' x 8' x 9.5'

Office Container Includes

- 4 X Aluminum Slider Window with rain shade & MS Grill outside
- 1 X Main door with rain shade
- 1 X AC provision
- 4 X Tube light
- 4 X Fan
- 8 X Workstation with overhead cabinets
- 1 X Cabin with overhead cabinets
- All electrical work
- Glass wool insulated wall and roof
- Paint from outside
- Vinyl flooring





PREFAB CONTAINER 20' – BASIC

Size: 20' x 10' x 8.5'

Office Container Includes

- 2 X Aluminum Slider Window with rain shade & MS Grill outside
- 1 X Main door with rain shade
- 1 X AC provision
- 2 X Tube light
- All electrical work
- Glass wool insulated wall and roof
- Paint from outside
- Vinyl flooring





PREFAB CONTAINER 40' – BASIC

Size: 40' x 10' x 9.5'

Office Container Includes

- 4 X Aluminum Slider Window with rain shade & MS Grill outside
- 1 X Main door with rain shade
- 1 X AC provision
- 4 X Tube light
- All electrical work
- Glass wool insulated wall and roof
- Paint from outside
- Vinyl flooring





GUARD CABIN / ROOM

Size: 4'x4' ; 4'X6' ; 6'X6' ; 8'X8' ; 10'X8'

- Roof: Hut Shaped, One Side Slope
- Walls: PVC, CFB, Wooden Ply
- Framing: MS Pipe, Wooden Baton,
- Floor: PVC Vinyl, Wooden Ply, Aluminum Checker Plate
- Paint: Texture, OBD, Enamel
- Electricals: CFL, Bulb, LED, Socket, Switch, Fan
- Insulation: Thermocol, Glass Wool, Puff





PORTABLE CONTAINER TOILETS

Size: 4'x 4'; 4'X 6' ; 6'X 6' ; 8'X 8' ; 10'X 8' ; 20'x 8' ; 40' x 8'

- **Shape:** Round, square, rectangle.
- **Material:** Steel, ceramic, plastic, HDPE, sandwich panel, insulated material
- **Color:** Available in various color combination as per client choice.
- **Base :** 75mm X 75mm square pipe, 50mm X 50mm square pipe, 18mm Cross member, Marine ply mounted
- **Roof:** M.S. Frame structure welded with M.S.18 SWG plain sheet for outer top curve, top inner 9mm white MDF.
- **Cage structure & wall panel:** 50mm square pipe & wall thickness, M.S. frame work.
- **Exterior wall:** M.S. frame welded with M.S.18 SWG bended sheet.
- **Internal wall:** Decorated with bake-lite sheet.
- **Door:** M.S. frame, Bake-lite sheet external wall, Suitable locking arrangement.
- **Plumbing:** Provided with quality EWC, flush tank, taps, washbasin, & mirror.
- **Paint:** Two coats of epoxy or enamel paint for all components.
- **Electrical fittings:** Concealed electric wiring, modular switch and sockets, exhaust fan, CFL.





PRISHA CONTAINER LINES

Contact Us:

Contact Person : Veepul Kaushik

Phone : +91 9711205396

Email : veepul@prishacontainers.com

Website : www.prishacontainers.com

Head Office:

Plot : 34, Block A, Road No. 2,
Mahipalpur Extension,
New Delhi - 110037

Site Office:

14/6, Plot 3, Hella Compound,
Mathura Road, Faridabad,
Haryana - 121003