



**Benny Impex®**  
where dreams lead to innovations

## Milk Analysers and Automation Solutions

# EKOMILK®

*Horizon*



## One Touch Automatic Milk Analyser

In technical collaboration with  
**EON TRADING INC**  
Bulgaria

**BULTEH**  
2000

### Milk Parameters & Somatic Cells Count



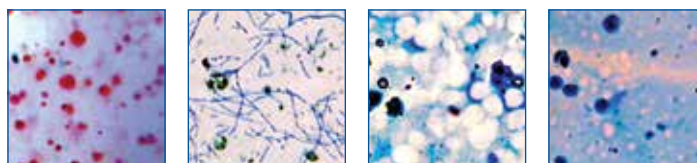
#### FUNCTIONAL REQUIREMENT

Preventing mastitis and improving milk quality is a vital role that contributes to improve animal well being, enhanced farm profitability and better assurances that food is being produced in a safe and sustainable way. Our monitoring tool includes all elements of a cost-efficient and effective surveillance system for controlling milk parameters and mastitis:

- Effective mechanisms to detect both clinical and subclinical mastitis starting with reliable and regular cell count and milk parameters measurements.
- Automated data collection that allow for timely evaluation of risk factors.
- Feedback mechanisms that allow management personnel and veterinarians to manage milk quality (dashboards, analysis and synthesis besides inter-stakeholder collaboration and remote diagnosis).

#### KEY FEATURES

- Hybrid Technology
- Easy to use and maintain
- Reliable and automated
- High Accuracy
- Multi- parameter milk analysis
- Fast and cost-efficient analysis
- Very small quantity of milk is required
- Short measurement time and low power consumption
- Digital re-calibration option for end user
- Power supply 220-240V/110-120V AC or 12V DC
- Printout and storage of measurement data
- USB or RS 232 Interface available for Weighing Balance, Keyboard, Pen Drive, Remote Display Unit, Serial Printer, PC
- GSM/GPRS option - E-mail, SMS, FTP, Remote Management



#### PARAMETERS

Measuring time	70 Sec
Somatic Cells Count	60,000 - 1,600,000 per ml $\pm$ 5%*
Fat	0.5% - 12% $\pm$ 0.1%*
Solids non fat (SNF)	6% - 12% $\pm$ 0.2%*
Density	1.0260g/cm <sup>3</sup> - 1.0330 g/cm <sup>3</sup> $\pm$ 0.0005 g/cm <sup>3</sup>
Protein	2% - 6% $\pm$ 0.2%
Lactose	0.5% - 7% $\pm$ 0.2%
Freezing point	-1.000 - 0 °C $\pm$ 0.015°C
Added water to milk	0% - 60% $\pm$ 5%
Conductivity	2-20 mS/cm $\pm$ 1% mS/cm (18°C)
Temperature	0 - 50°C $\pm$ 0.015°C
Data Processing System	on-line data transfer, data storage, milk data print-out and reports generation for milk collection and payment
GSM/GPRS	E-mail, SMS, FTP, Remote Management
Animal monitoring platform	PC, Tablet, Smartphone application.

\* When compared with reference methods under Standard Test Conditions.

#### APPLICATION AREA



Dairy Farms



Milk Collection Points



Dairy Plant



Veterinary and Dairy Laboratories