

MEDICAL
GAS
PIPELINE
SYSTEM

A HOUSE OF LIFE SAVING
PRODUCTS

MEDICAL
GAS
PIPELINE
SYSTEM



Corporate Office & Works :

Industrial Estate, Kalpi Road, Near Amar Ujala, Kanpur.

Email : lifecare.products@yahoo.com

Ph : 09198797979, 09839211521

Head Office :

33, KDA Market, Shivaji Nagar, Kanpur- 208005

Email : lifecare.products@yahoo.com

Ph : 0512297978, 09839211521, 09198797979.

Branch office :

D-309, Vibhuti Khand, Near Urdu Academy, Gomti Nagar, Lucknow.

Ph : 07607797979, 07317456565

Branch Office :

Maya Bazar (North Gate) Near Jublie Talkies, Gorakhpur.

Ph : 07607797979



About us

Life Care Products is leading company providing a new age health care solutions to the nation. Company is dedicated in designing, constructions, manufacturing, fabrication supply and installation of Medical Gas Pipe Line System and Modular Operation Theatres.

Our motto is to be the leading provider of new age solution for Medical Gas Pipe Line and Modular Operation Theatres. The guiding philosophy with the Life care products has been to identify latest cutting edge technologies all over the world understand its relevance to Indian market and help the users in india with its acquisition, applications and maintenance. We get access to the latest technology and world class products from our principals who is incidentally enjoy a market lead position in the world, in the field of Medical Gas Pipe Line System, OT Pendants, Bed Head Panels, Modular O.T., Laminar Air Flow System, Nurse Call Systems.

The Life Care Products started in 1991 and in this tenure we achieve a remarkable position in the field of Medical Gas Pipe Line System and Modular Operation Theatre.

Moreover our company believes in continuous upgrading of technology and we invest a certain percentage of our margin in Research and Development, to develop high performance innovative products. Offering the facility of customized is one of the core areas of our company. Our customer can avail the facility of customization as per their specification at most competitive prices. Our expertise is delivering customized medical solutions within the stipulated time period helped us to gain the trust and support of our clients over our products range and also on our services.

We have a team of dedicated professionals in sales, execution, after sales service and R & D. The Research work of our product range is done on various attributes, thus meeting the various requirements of our esteemed clients. The attributes are :

- State of Art designs
- Safety adherence
- Smooth functioning of all components

Why Life Care Products :

- Use of advance technology.
- International quality standards
- Offer best competitive prices.

Life Care Products is financially sound company having its core business of providing turnkey solutions of hospitals for medical gas pipe line, modular operation theatres, nurse call system, O.T. Light, O.T. Table Scrub Sink, Anti Bacterial Paint, Anti Static Flooring etc. In house professionals consultants having specialized experience for the respective projects. Dedicated experienced team for execution of different projects and thoroughly professionally managed company. Corporate policy aids in our growth and development. The four pillars of our corporate police includes :

- Transparent work culture
- Customer orientation
- Professional and ethical values
- Sound Business Policies

MEDICAL GAS OUTLET POINTS

BS Standard (Model: Amber)

Front Loaded with Probe



Features

- Complies with BS EN 737-1, BS 5682 and HTM 2022 standard regulations.
- CE approved.
- The Medical Gas outlet combines ease of installation and low cost maintenance.
- Available for head wall unit/wall/pendant units.
- Double locking (secondary) facility.
- Front fascia of Gas outlet are non-interchangeable and gas colour coded.
- Secondary isolating valve allows the maintenance of the gas outlet without the need for a pipeline system shutdown.

British Standard (BS) Medical Gas Outlets are fixed to the gas source by safety nut preventing non-competent personnel to connect the outlet to the wrong gas source.

The releasing rings are gas specific via color and different shapes and it is absolutely impossible to mix them. Geometrical and dimensional connector keying according to gas used safety. Non-return valve for no interruption in gas supply. Plastic fool-proofing design to prevent gas interchangeability during reassembly. Color coding for different gas source and only accepts British compatible adapters. It can be used on O₂, Compressed Air, Vacuum and N₂O.

PB Standard (Model: Sapphire)

Front Loaded with Probe



Complies with NFPA-99

Features

- Flow rate exceeds the requirements of NFPA.
- Accept only puritan-Bennett gas adapters.
- 100% Pressure testing of each outlet and cleaned for medical gas service.
- Indexed to eliminate interchangeability of gas services.
- Up to 1 "[25mm] wall thickness adjustment.
- 360° Swivel inlet Pipe for easy installation.

A large color coded front plate shall used for ease of gas identification and aesthetic appeal.

The 'Puritan Bennett' standard (PB) medical gas outlet shall be manufactured by us under the brand name **SAPPHIRE**. It is manufactured with a 6-1/2" [165 mm] length type "K" 1/2"[12.7mm] outlet diameter (3/8" nominal) size copper inlet pipe stub, which is silver brazed to the outlet body. The body shall be of 1 -5/16"[33mm] diameter, one piece brass construction. For positive pressure gas services, the outlet shall be equipped with a primary and secondary check valve and the secondary check valve shall be rated at a

maximum of 200 psi [1,379 kpa]. In the event the primary check valve is removed for maintenance, outlets body shall be gas specific by indexing each gas service to a gas specific dual pin indexing arrangement on the receptive identification module.

Model: Parkodex with Probe (Hook Loose Type)



Features

- The Medical gas outlet combines ease of installation and low cost maintenance.
- Non-interchangeable self-sealing quick connect gas outlet for O₂, N₂O, Air, CO₂.
- Available for head wall unit/wall/pendant units.
- Double locking (Secondary) facility.
- Front fascia of gas outlet are interchangeable and gas colour coded.
- Secondary isolating valve allows maintenance of the gas outlet without need for a pipeline system shutdown.

DIN Standard (Model: Jasper) with Probe

New



Features

- Geometrical and dimensional connector keying according to gas used.
- Two-part construction for simple and fast separation from base block.
- Double locking prevents loss of gas due to leakage and for facilitating online servicing also.
- Gas-specific block and socket prevent any risk of false operation as interchanging of gas service and non-competent personnel mix connecting the outlet to the wrong gas source.
- Equipped with non-return valve for the convenient installation and servicing replacement possible without blocking the station.
- Push to release mechanism adaptor will automatically click back into first click lock position. Gas flow to the equipment is interrupted by pressing release ring on the fascia.
- Available for different kinds of installation, e.g. in walls, consoles, bed head trunkings, ceilings or pendants.
- Module design minimize the number of joints where dust and bacteria can collect. Thus it is very easy to clean and maintain.
- Worldwide color-coding and lettering identification for clearly indicating the specific gas.

German Standard Medical Gas Outlets are designed for quick connection with no risk of gas cross connection for gas distribution in centralized areas of hospitals, dental clinics and veterinary facilities; patient rooms, operating areas, surgery centers and dental offices.

OXYGEN FLOW METER with HUMIDIFIER BOTTLE

BPC Flow Meter



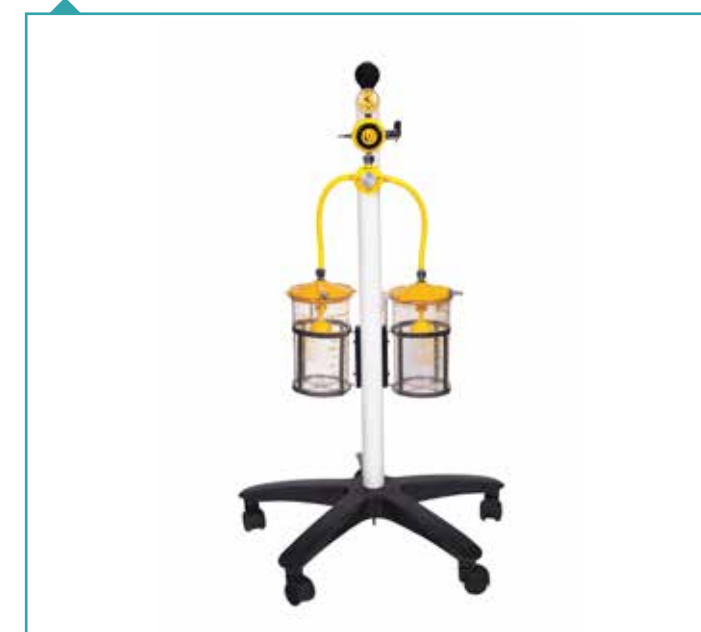
Features

- It will be made of nickel-plated brass body.
- It will be backpressure compensated, double jacket with flow gradations marked on it. Desired flow will be settled through rotatory knob.
- Flow range should be between 0-15 lpm.
- Transparent and unbreakable type humidifier bottles, to provide bubble-type humidification, made of polycarbonate to be installed with nut and nipple type connections.
- Humidifier bottle is available with safety valve features.

Oxygen flow meter is a pressure compensated flow meter that delivers an accurate prescribed flow to patients from the gas source. Our oxygen flow meter provides an accuracy of $\pm 5\%$ of full scale reading and is pressure compensated to ensure that the flow meter maintains its accuracy independent of varying gas supply pressures. It is suitable for most type of respiratory therapy.

THEATRE SUCTION TROLLEY

Theatre Vacuum Unit Model JK /TVU/01



Theatre Vacuum Unit Model JK /TVU/02



It will be trolley mounted. The unit will include one regulator having gauge mounted on the stand. Having two reusable each 2000ml plastic collection bottles mounted on base of trolley unit connected with regulator and low pressure tube inter connections. The base of the trolley is fitted on castor wheel arrangement to move the system from one place to another place easily.

VACUUM REGULATOR



Features

- Meets EN 739 standards.
- Provides an adjustable, continuous vacuum level up to 760mmHg.
- REG/OFF switch allows the quick restoration of a pre-adjusted vacuum level.
- Continuous suction controller guaranteeing reliability and fine adjustment.
- Plastic housing and cover preventing from risk of corrosion.
- REG/OFF indicator on the side allows the care giver to operate the vacuum regulator easily.
- Non Interchangeable Screw Threads (NIST) guarantee easy and safe operation.
- Precise vacuum control with non-slip hand wheel.
- Lightweight plastic construction
- Colour coded body for additional safety
- User-friendly gauge marked for high, medium and low pressure.
- Multiple connections and mounting options.
- Available with overflow safety trap.

2-stages Continuous Model Vacuum Regulator is to measure and adjust the vacuum level within the context of medical suction. It is used to remove substances from the patient's body during surgical and other procedures. The vacuum regulator should be connected to a wall source of vacuum using a direct probe or through a rail mounting system. Applications include all medical and emergency applications.

VACUUM JAR



Features

- Clear polycarbonate is non-toxic, exhibits low protein binding and is easy to clean.
- Screw-fit plastic cap and float assembly can be steamed or sterilized in autoclave.
- Cap fitted with float safety valve automatically and efficiently shuts Vacuum fully when it is full.
- Cap inlet and outlet tubing connectors molded-in unique graphic indication of patient/vacuum for easy-use.
- Molded ergonomic handle enables it to hang it directly onto the wall side which reduces the risk of fluid contact and makes transporting simple and efficient.
- O Ring over the top of bottle for a positive, leak proof seal without generating any noises or vibrations harmful to the patient.
- Available in 600ml, 1000ml and 2000ml.

Feature in 2000ml Jar

- In 2000ml capacity, the cap/lid is clipped on to avoid the fluid spread outside the bottle at the time of opening the Jar lid. This helps in easy removal of the lid from Jar.

Reusable Collection Bottle is used to collect liquids or mucus resulting from medical suction. Constructed of polycarbonate, it can be sterilized in autoclave countless times without losing quality even at 134° C for 15mins. It can withstand hard usage and provides trouble free service over a long time.

AVSU ZONAL VALVE BOX

Zone Valves and Zone Valve Boxes provide versatility and value through medical gas or vacuum pipeline flow prevention.



Features

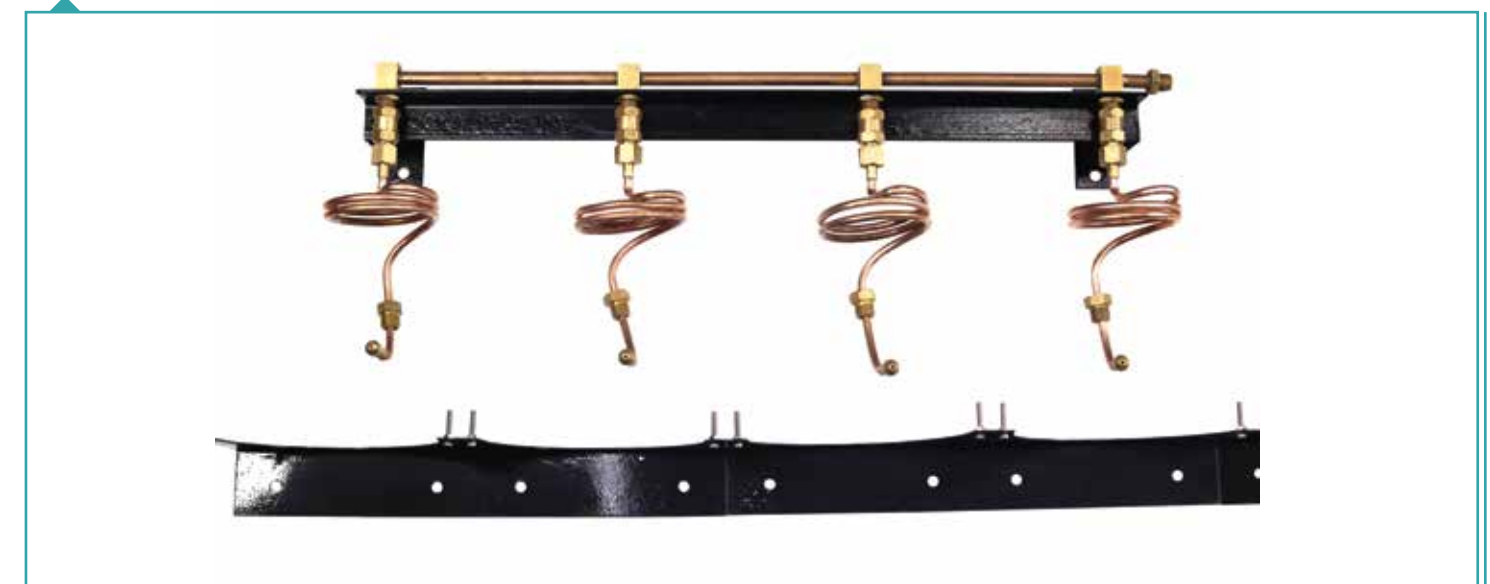
- Offered in single (houses 1 valve) or multiple (houses 2 to 6 valves) types.
- Features a pull-out, removable opaque window.
- Adjustable to different wall thicknesses.
- Include color-coded gas identification labels.
- Blowout proof stem.
- Available in locking or non-locking.
- Swing-out design to prevent damage during brazing operation.
- 100% hydrostatically tested.
- 3-piece ball type design for ease of maintenance.

MANIFOLD SYSTEM (OXYGEN/N₂O)

The manifolds manufactured by us are extendable & Non-extendable type with choice of size of cylinders bank for bulk 'D' type jumbo cylinders.

Manifold is suitable to withstand a working pressure of 140Kg/cm³.

Manifolds have high pressure copper annealed tail pipes with one end having Brass adaptor suitable for cylinders. Manifolds have Brass Non Return Valves (NRV) for individual cylinders (Cylinders to be provided by the client).



AUTOMATIC GAS CONTROL PANELS (DIGITAL/ANALOG)

Switchover gas manifolds provide a standby gas supply from two equal banks of cylinders, with automatic changeover. The manifold is convenient through regulating gas cylinders pressure to provide uninterrupted gas. It provides a cost effective solution to trailing hoses around the operating room.

The automatic changeover is done through a Fully Automatic Gas Control Panel.

Spectrolite



Features

- Complies with NFPA 99.
- Fully automatic with manual reset.
- Lockable metal outer cover provides durability and fire-resistance enhanced safety.
- Automatic switch by saddle valves between two gas sources and is used for refilling gas.
- Pressure-reducing design maintains a reliable stable output pressure.
- Pressure gauge/LED display shows clearly the pressure at each gas source and the total pressure at the outlet.
- Full bore valves for minimum pressure loss can be locked in open or closed positions.
- Provides maintenance or major works through isolation facilities of gas distribution system.
- Microprocessor based PLC for ease of maintenance and error reporting.
- Gas specific color-coded and non-interchangeable hoses connections results in enhanced safety.
- Audio and light alarms turn on automatically when one of the gas sources is exhausted.
- LED display readable even in poor lighting connections.
- Filter screens out all the impurities in the gas sources.
- User-definable hose length upon requests.
- Remove status panel indicates local status.
- Manifolds available for medium and high flow applications.
- Passes 100% pressure tests.
- Available in handling gases of O₂, Air, N₂O and CO₂. Input power 110V AC to 240V AC, 50 to 60Hz.

SEMI AUTOMATIC

We manufacture semi automatic gas control panels with manifolds. These equipment are used for checking the gas level. Fitted with control panels, our product are known for their ability to yield accurate results.



POWER COLUMN

Power Column samples the organization of medical service equipment in one aesthetically appealing vertical headwall.

It is a modular designed product to provide a clean, sanitary and ordered environment. Furthermore it can enhance the quality in care and medical environment. Due to its systematized design, a network provided for medical care service is applicable to the use of secondary instruments and assemblies.

The main structure consists of fluorescent panel, aluminum component and side track. Also includes power lines and medical gas piping. Side tracks are installed at four at angles, and the length is equal to the column. All the assemblies required by medical care personnel can be easily and securely placed on the side track of this column. Applications in mid to acute level environment.



Features

- Designed for ease of maintenance and infection control.
- Built as a four-sided unit that offers 360° access to services and equipment management for critical care areas.
- Can be customized and upgraded to meet your facility's needs.
- Offered in a variety of widths and heights, tailored to meet your space needs.
- Wide selection of laminate colors are available.
- Multiple rail system allows for superior accessory management.
- Removable laminate panels allow for simplified maintenance.

BED HEAD PANEL

Bed Head Units/Bed Head Panels are constructed from aluminum extrusion profiles with round and smooth shape corners and shall be in different sizes & length per each patient. The unit shall have three physically separated compartments (for low and extra low voltage, electrical services and for medical gas services). The unit shall provide a safe, efficient means of delivering services to patients/staff in both general and special care applications.

The unit shall have smooth curved surfaces, no visible screws. Installation of the unit shall be carried out easily by aluminium rail-brackets which allow simple horizontal and vertical alignment taking into account any wall high spots or unevenness. Removal of the covers for maintenance and pipeline connection shall be easy.

The unit shall consist of a number of modular extrusions capable of being joined together to form a carcass to suit the particular application. The unit shall have a backspin which shall incorporate an area which is for medical gas pipelines.

Segregation of services ie. Extra low voltage (<48 volts), low voltage (<500 volts) and medical gases shall be maintained throughout. Medical Gas and Electrical services shall be separated by inside unit. Electric power feedings shall be 220V/50Hz. The middle compartment of the unit shall be used for medical gas outlets and electrical services but gas services and electric services shall be physically separated. Upper and lower compartments of the unit shall be used for reading through indirect lights and necessary electrical wirings. The lower cover of the unit shall have compartment for reading through light illumination. The upper cover of the unit shall have two openings for indirect light illumination through a transparent sheet. Both sides of the unit shall be closed by aluminum covers. All cables and terminal blocks used inside the unit shall be non-flammable type.

The unit shall be manufactured in accordance with international and European standards, ISO 11197 and EN 793 for "Medical Supply Units" to HTM 2015 and 2022 and to latest edition of IEE and NEC regulations. The aluminum extrusion unit shall have an electrostatic powder paint finish on all external surfaces. Unit shall be supplied pre-piped, pre-wired and fully tested. The minimum mounting height of the unit should ideally be 48 inches (4') from the finished floor level. All removable covers of the unit shall be earthed. Electric power feedings shall be 220V/50Hz.

Lumipan H



The standard range of Patient Bed Head Unit shall be "CE" marked under the Medical Devices Directive 93/42/EEC. Under this directive, the specified products shall be classified as Class IIa Medical Devices. (We have different types of models and specification can vary for each model)

THE UNIT SHALL CONSIST OF FOLLOWING PROVISIONS.		
1. Medical Gas outlets	5. Infusion pole	9. Reading lamps
2. Electrical Switch Sockets	6. Vacuum jar holder	10. Medical rails
3. Low voltages	7. Monitor Trays	
4. IV Hook	8. Up and down lights	

Silk H



Critrunk H



Lumipan D



Robustrunk



Starlite H



Silk Smart V



Spinel V



Lumipan V



OPERATION THEATRE SURGICAL PENDANT

The Ceiling Pendant Systems shall provide convenient positioning of medical equipments, medical gas outlet points, electricals and speciality services. The pendant shall be mounted to the ceiling with extremely robust carcass system comprised of stainless steel angles and supporting rods. The Ceiling Pendant shall comply with HTM2022. The support arms shall be extremely robust and revolve on high quality bearings, so that the pendant head glides smoothly and quickly to any desired position. The multipurpose pendant can have single arm or double arm. The arms shall be available as follows:

-1000mm movable arm with 600mm of vertical movement arm shall be capable of 330 degrees of rotation and be fitted with stops, which can be easily adjusted to suit the desired mode of operation. The arm may be fitted with pneumatic brakes to prevent inadvertent movement. The pendant service heads shall be modular. The head shall be capable of accepting a range of shelves, accessories rails or other accessories.

The Pendant Service Heads shall be in 500mm length and supplied with medical gas outlets, BS 13 amp unswitched sockets. Medical gas outlets and probes shall fully complying with BS 5682:1992. Gas connection between pendant and pipeline shall be carried out via antistatic medical gas hoses comply with EN 739:1998. Both ends of the hoses shall be connected by gas specific NIST (Non-Interchangeable Screw Thread) connectors. The heavy duty electric arm shall be capable of supporting 90 kg load at maximum reach. Pendant arm shall be RAL 9002 electrostatic powder painted. The medical rail poles shall have an anodized finish.

The pendant shall have an electric junction box mounted to the carcass system over false ceiling for connection of incoming electrical services: segregated into three compartments, electrical, communications (low-voltage), and critical branch power, as required. Preinstalled electrical equipment shall be wired to the junction box. The pendant shall have ground bar located in junction box. Ground bar shall be copper with compression screws, which shall accept 4 AWG, or smaller building service ground wire. All cables used inside the pendant shall be non-flammable low smoke halogen free type. Cables shall be passed through flexible spiral conduit. Surgical Pendant shall be equipped with the following services:

- 2 no of Oxygen (O₂) outlet
- 1 no of Nitrous Oxide (N₂O) outlet
- 1 no of Medical Air 4 bar outlet
- 1 no of Medical Air 7 bar (Surgical Air) outlet
- 2 no of Medical Vacuum outlet
- 2 no of electrical box made from moulded white self-extinguishing ABS at both sides of the console
- 4 no of double unswitched BS 13A standard electrical socket (UPS)
- 8 no of potential earthing nodes
- 1 no of brake button for the control of pneumatic brake
- 2 no of aluminium extrusion accessories rail
- 1 no of shelves in 500x470x25 mm sizes
- 4 no of Pressure gauges for oxygen, nitrous oxide, air 4 and air 7 bar
- 1 no of vacuum gauge

The standard range of Operation Theatre Pendant shall be "CE" marked under the Medical Devices Directive 93/42/EEC with approval body number. Under this directive, the specied products shall be classied as Class IIa Medical Device

Critrunk V



Silk Smart V



S-2 (V) 600



Movable

S-2 (V) 800



Single Arm

OPERATION THEATER PENDANT

S-2 (V)



Long Movable

S-3 (H)



Laparoscopic Single Arm

S-3 (V) 800



Single Arm

S-4 (V) 800



Single Arm

S-1 (V) 1000



Double Arm

MEDIA BRIDGE (OT/ICU BRIDGE)

We bring you the latest technology in the form of a Media Bridge. Media Bridge is a replacement for pendants. It is not only better economically by providing 360 degree access but it also helps in maintaining the class of clean room specified as there is no obstruction in the laminar flow of air.



Features

- Aluminum Extrusions: Robust construction design with all suitable segregation.
- Medical gas outlet points (all the four sides of media bridge).
- Electrical switch sockets 5/15amp (All four sides).
- Low voltage segregation, RJ 45 sockets.
- Manually Horizontally (Left to Right) Movements of monitor trays (Pendants).
- Monitor trays swill movement up to 330 degree.
- Hanging Arrangements for Infusion pump, IV and other suitable equipments.
- Suitable High pressure antistatic and antibacterial hoses.
- Concealed LED Lights for better luminosity.
- Height adjustable trays (Pendants).

S-4 (V) 600



Movable

S-5 (H)



Laparoscopic Movable

MOTORIZED PENDANT



Specifications

- Material High strength aluminum alloy or customized
- length of the arms; One: 750mm; Two: 750mm
- Loading capability One 150kg
- Medical gas outlets Oxygen (2 nos.), Vacuum (1 nos.) and Air (1 nos.)
- Equipment shelf 2 pcs or customized
- Equipment drawer 1 pcs or customized
- Infusion sets Include sets sockets, infusion pump, infusion poles. etc
- Power Input 220V; 50-60Hz or customized
- Gas outlets standards: PB/BS/DIN/Parkodex
- Rotary degree 330 degrees in each joint
- Ceiling mounted according to customers' requirements
- Power sockets 6 pcs
- Communication system RJ45 (1 Pcs); RJ15 (1 Pcs)
- Finishing: Antibacterial Powder.

Single Arm Motorized Medical Pendant is mainly used in the Operating Rooms, Intensive Care Units, Emergency Rooms, etc. to supply Medical Gases, Electrical Power, Communicating Ports, and to load the medical equipments such as patient monitors, infusion pumps, surgical instruments, endoscopy equipments, etc.

S-5 (H)



Laparoscopic Single Arm

S-4 (V) 800



Double Arm

MEDICAL GAS ALARM (DIGITAL)

The Compact Digital Alarm system shall be complete with a one-year warranty. Each module of the Compact Alarm shall be microprocessor based with individual microprocessors on each display and sensor board. The sensors shall be capable of local (in box) or remote mounting. Each sensor and display unit shall be gas specific, with an error message display for an incorrect connection.

Compact Alarm can accommodate up to 07 gases.

Each specific Area service for the Compact Alarm shall be provided with an LED digital read-out comprising of 0-250psi [0-1,724 kPa] for pressure and 0-30"Hg [-100-0 HgkPa] for vacuum. The digital read-out shall provide a constant indication of each service being measured. It will indicate a green "NORMAL" and a red "HIGH" or "LOW" alarm condition. If an alarm occurs, the "RED" alarm light shall ash and the audible alarm will sound. Pushing the "ALARM MUTE" button will cancel the audible alarm, but the unit will remain in the alarm condition until the problem is rectied.

The default set point on the Compact Alarm shall be $\pm 20\%$ variation from normal condition. In the calibration mode the following parameters shall be eld adjustable: High/Low set-points, Imperial/Metric units, Repeat alarm Enable/Disable. Set points shall be adjustable by two on board push buttons.

Each Compact Alarm module shall be microprocessor based and be adjustable.

A repeat alarm function shall, when enabled on the Compact Alarm, be capable of turning on the buzzer again (after a preset time) if the fault condition has not been rectied.

The box shall be fabricated from 18 gauge [1.3 mm] steel with 1/4" [6.4 mm] I.D. type "K" copper pipe for connection to the service line. The box mounting brackets shall be adjustable to accommodate for dierent wall thickness.

Input power to the alarm is: 115 VAC to 220 VAC, 50 to 60 HZ. Complies with NFPA-99.

All the gases inlets provide the NIST connections.

Turquoise

Safe



Features

- Digital sensors can be mounted locally or remotely utilizing.
- True digital LED read-out with red "alarm", normal green trend indicator for each service.
- Psi, kPa or BAR read-out (switch selected).
- High/low alarm set-points are Held adjust able for each gas service.
- Repeat alarm, adjustable 1 to 60 minutes.
- Up to 07gases in a standard configuration.
- Alarm buzzer in excess of 90 decibels.
- Individual microprocessor for each display and sensor module.
- All modules mounted on a hinged frame for easy accessibility.

MASTER ALARM

Master Alarm System is mainly used in the system for providing information and current status of multiple gas alarms and is capable of supporting various gas alarms of different gas categories. The main feature is for remote monitoring of various gas alarm installed in hospital's rooms with displayed color LED's. The main benefits of this product are:



Features

- Support for multiple gas alarms (Max up to 20).
- Different category gas alarm support (2 Gas to 6 Gas Type).
- Real time and simultaneous monitoring from one single location
- Interactive color LED's push buttons and 7-segment display.
- Buzzer provided for sound alarm.
- Mute and test buttons.

MEDICAL GAS ALARM (ANALOG)



Features

- Pressure sensors can be mounted locally or remotely utilizing.
- True analog gauge read-out with red "alarm", normal green trend indicator for each service.
- True analog gauge read-out with red "alarm" normal green trend indicator for each service.
- High/low alarm set-points are held adjustable for each gas service.
- Repeat alarm, adjustable 1 to 60 minutes.
- Up to 07gases in a standard configuration.
- Alarm buzzer in excess of 90 decibels.
- Individual microprocessor for each display and pressure sensor module.
- All modules mounted on a hinged frame for easy accessibility.

NURSE CALL SYSTEM

Nurse call system acts as an interface between patients and the hospital administration/nurses.

The main unit is placed with the administrator and it subordinate 'Corridor panels' placed outside which are used by the patients to call the nurse. Nurse Call system makes the patient administration efficient and greatly simplifies patient care.The patients can press the appropriate button when he requires assistance, which will then show on the corridor and main panels. If the nurse is near the room, she will see the corridor panel light and immediately assist the patient. Otherwise, the attendant at the main panel can acknowledge the call, which will light up the LED 'waiting' on the bed panel informing the patient his call has been acknowledged.The main panel displays the corridor wise and room wise segregation of panels.The usual problems associated with installing such systems are extensive and complicated wiring. The usage of single cable wiring in Nurse Call System makes sure wiring is easy and not expensive.



E-FLO 7

- 10.1" Colour TFT screen with display of Pressure-time, Flow-time & Volume-time waveforms and P-V, F-V, F-P Loops
- Standard Ventilation Modes of VCV, PCV, SIMV(V) + PS, SIMV(P) + PS, Manual & Standby
- Advanced proportional solenoid valve technology to realize accurate ventilation control
- Electronic PEEP
- Absorber (without heating system)
- Electronic flowmeters for O₂, N₂O, Air with High accuracy and easy reading
- Closed - loop control for exact monitoring
- Comprehensive alarm system
- Compact and light weight body design for easy and safe maneuverability
- Yoke system (1xO₂, 1xN₂O; without Cylinders)
- ACGO function
- FiO₂ Monitoring
- Lithium battery: >90 Minutes monitoring
- * Optional: Vaporiser, SpO₂ Module, CO₂ (PHASE IN - Mainstream), Heater of Absorber, By-Pass of Absorber, Active AGSS System, Communication Interface, Autoclavable function of Absorber, Auxiliary Oxygen flow meter, Mainstream Gas module for 5 kinds of Anesthetic Agent, CO₂ & N₂O (PHASE IN), Touch Screen

**Optional features shall be configured at factory prior to shipment based on Customer Order



Features

- Three gases Anaesthesia machine O₂, N₂O, Air
- Penlon make Tec vaporizers for Halothane and Isoflurane drug with select a Tec Back Bar
- Cascaded 5 Tubes three gas rotameter for low & high flow Anaesthesia Delivery systems
- Anti Hypoxia Device for 1:3 mixed ratio between O₂ & N₂O in surgery gas mixture
- Audio-Visual Oxygen Failure Alarm
- Gas inlet point O₂ & N₂O each 3 nos. & Air 1 no. Pin-Indexed yokes for O₂ & N₂O each 2 nos. & diameter indexed pipe line connectivity each 1 No. O₂, N₂O, Air
- Moveable FGO patient block with emergency O₂ flush
- Passive Scavenging System.
- Panel mounted high pressure & low pressure display gauges Non return cum pressure relief valve to minimize risk of back pressure. Oxygen outlet port for gas driven ventilator
- Modified higher efficiency forged regulators
- Microprocessor controlled electrically driven anaesthesia ventilator.
- Multi parameter monitor ECG, NIBP, SpO₂, Temp, Resp.
- Top tech circle absorber.
- Trolley made of M.S. Multi colour electro statically powder coated, Stainless steel table top tray, Monitoring top tray, Moveable hanger hook, Mounting bracket for ventilator, two sliding drawers Antistatic Breaking Castor Wheel. Size: 1490 x 760 x 660 mm (HxWxD) approx.
- Provision for: Dial type BP apparatus, Drip stand, Basal flow.

(Optional at extra cost)



LIFE LINE COMPACT



Life Line Compact Features are similar with those of Life Line Hope.

Additional Features: Panel mounted high & low Pressure display gauges and audio visual OFWD.

Optional: Diameter indexed Air connection.

LIFE LINE HOPE



Features

Hypoxic Guard Rotameter - Pneumatic Device

Ensures no Nitrous Oxide flow, if oxygen flow is lower than 0.5 ltr/min. approx. Minimum 25% (±5%) oxygen (1:3 mixed ratio between O₂ & N₂O) in surgery Gas Mixture.

- Oxy Locked N₂O supply
- Oxy failure warning device
- Higher efficiency forged regulators & Yokes with S.S Fittings.
- High Precision pressure relief cum non return valve
- Vaporizer Ether & Halothane
- Change Over mechanism with oxygen flush (open & close circuit)
- Oxygen & Nitrous oxide Gas Inlet point each 3 nos.
- Standard Magill's circuit
- All Rubber Antistatic Tested

TOP TECH CIRCLE ABSORBER

Features

International standard, 22mm connector, Easy to refill, Light weight transparent Canister, Single & double chamber provision, Soda lime capacity 0.8 kg. each chamber, Easy cleaning-fully autoclavable.

APL valve provided for gas scavenging, Absorber completely made of chromium plated brass, All joints are leakproof by the taper & O ring Connectivity.



CIRCLE (CO₂) ABSORBER

- Transparent lightweight canister
- Double Chamber Adult size
- Soda lime Capacity 1800 gms
- Completely leak proof
- Easy cleaning - fully autoclavable

Reversible soda lime canister fitted to control head by means of a central tube which is screwed into the head with a large plastic hand wheel.



VAPORIZER

Penlon - U.K made sigma Delta Vaporizer

The sigma Delta is a Patented Technology used in designing the latest Vaporizer, ensuring highest quality and reliability. It generates accurate concentration under variable temperature & flow rate, low body weight Services free selectatec Pour fill halothane vaporizer (for enflurane, Isoflurane & sevoflurane drug vaporizer are also available in separate).

- Weight-5 kg (approximate)
- Capacity-Max 250mL/Min. 35±10mL (after draining approx. 60+-10mL of liquid is retained by the wick)
- Flow Range-Operating Flow Range 0.2 Ltr to 5 ltr/min
- Temperature Range -Operating Flow Range 15 to 35°C
- Selectatec compatible with interlocked dimension 120 wide x 190 deep x 242 high (mm)
- Service Free

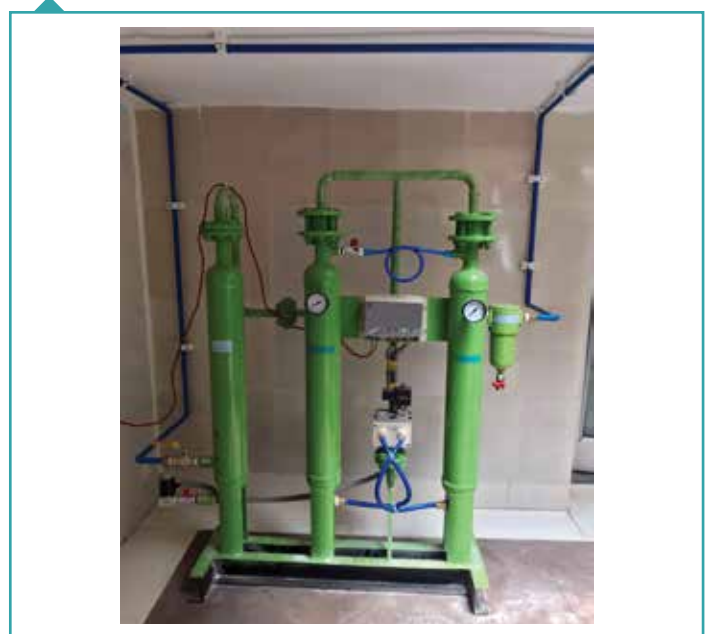




VACUUM PUMP WITH TANK

Vacuum is one of the most versatile of power sources it can lift, hold, compact, evacuate, move, dehydrate, agitate, actuate, form, rotate, filter, clean and simulate high altitude. Producing a vacuum for modern Medical/ Industrial requires a method of Air removal that is simple, dependable and economical to operate and maintain.

HEATLESS COMPRESSED AIR DRYER WITH POST & PRE FILTERS



Features

Tower

- Non-corrosive Aluminium body.
- Amply sized to save heat adsorption.
- Stainless-steel support screens and air diffusers.
- Large desiccant bed ensures sufficient contact time to produce -40°C dew point (-60°C with Molecular sieves).

- Each tower is provided with pressure gauge.

Filter

- Each dryer isequipped with a Pre-filter to protect desiccant from free water contamination, dust, scales, etc., and an after-filter to avoid desiccant dust carry over.

Pressure Gauge

- Pressure gauges on each tower for easier illustration of working of dryer.
- Highly reliable solenoid valves, to international standards, which acts as main flow and exhaust valves.

Valves

- Check valves with wel I designed orifice for highly accurate purge flow.

OIL FREE AIR COMPRESSORS

Duplex Compressors mounted on Base Frame (20 H1^ 25 H P & 30 H P)

- Low noise and vibration levels
- Easy installation
- Continuous and heavy duty operation
- Cost efficiency



SOME OF OUR PRESTIGIOUS CLIENTS:

- L.L.R. & Associated Hospital, Kanpur
- Dept. of Medicine, Kanpur
- Dept. of Pediatrics, Kanpur
- Dept. of E.N.T., Kanpur
- Mariampur Hospital, Kanpur
- Institute of Cardiology, Kanpur
- Satelite Hear Hospital (ESCORT), Kanpur
- Kanpur Medical Centre, Kanpur
- Chandani Hospital, Kanpur
- Zohra Hospital, Gorakhpur
- B.H.E.L.Hospital, Bhopal
- Hindustan Hospital, Jabalpur
- Ayushman Hospital, Jabalpur
- Jeevan Jyoti Hospita, Allahabad
- Anand Hospital, Allahabad
- Ratan Cencer Hospital & Research Institute, Kanpur
- Rama Dentre College & Hospital, Kanpur
- ERA's Lucknow Medical College & Hospital, Lucknow
- Regency Hospital, Kanpur
- Nepal Ganj Medical College, Nepal
- Fatima Hospital, Gorakhpur
- Opeque Hospital, Basti,
- P.P.M. Hospital, Saket Nagar, Kapur,
- Savitri Hospital, Gorakhpur
- Dist. Hospital, Chitrakoot
- Jalaun Medical College, Jalaun
- Azamgarh Medical College, Azamgarh
- J.K. Cencer Institute, Kanpur
- Rama Medical College, Mandhna
- Rani Lakshmi Bai Dist Hospital, Lucknow
- Ram Manohar Lohiya Dist. Hospital, Lucknow
- M.L.B. Medical College, Jhansi
- Yashlok Hospital, Allahabad
- Deen Dayal Hospital (phase-1), Aligarh
- Malkhan Singh Hospital, Aligarh
- Arogya Dham Hospital, Chitrakoot
- Sad Guru Sewwa Sangh Trust Hospital, Chitrakoot
- S.P.M. Meidcal Centre, Kalyanpur, Kanpur
- Prakhar Hospital Pvt. Ltd., Kanpur
- Rama Educational Society, Ghziabad
- Rachit Hospital, Gorakhpur
- Regency Reanal Hospital, Kanpur
- Panacea Hospital, Gorakhpur
- Anurag Hospital, Kanpur
- Azad Multi Speciality (Mirza Group), Unnao Kanpur
- City Hospiutal, Gorakhpur
- Fatima Hospital, Mau
- United Hospital, Butwal Nepal
- Hanuman Poddar Cancer Hospital, Korakhpur
- Gorakhnath Chikitsalya and Research Centre, Gorakhpur
- Pulse Hospital, Gorakhpur
- Regency Hospital Govid Nagar, Kanpur

... And Many More ...