

APPLICATIONS & OUR CUSTOMERS



Hi-Tech SEAL PVT. LTD.

AN ISO 9001:2008 CERTIFIED CO.

MANUFACTURERS & EXPORTERS OF MECHANICAL SHAFT SEALS

Plot No. 5023, Behind Meghmani, GIDC., Ankleshwar 393 002
Gujarat - India Ph: +91-2646- 645386 Fax: +91-2646-227236
(M) 98795 97593 (M) 92271 32051 / 99096 79711
E-mail: sales@hi-techseal.com / hitech_rajedia@yahoo.com
Website: www.hi-techseal.com

Marketing Location: Baroda, Ahmedabad, Surat, Vapi, Mumbai, Pune, Hyderabad, Goa, Chennai, Delhi, Baddi, Indore

DEALER

Design By Aditya Infotech (M) 98250 42135

Hi-Tech
The Perfect Sealing Technology

Hi-Tech SEAL PVT. LTD.

AN ISO 9001:2008 CERTIFIED CO.



NSIC
CERTIFIED CO.



MECHANICAL SEALS

SPARES

SERVICES

REPAIRING

Mechanical Seals



The experts for industrial
sealing technology

INDUSTRIAL PUMP MECHANICAL SEAL

MULTI SPRING SEAL



HTS/80A HTS/80B HTS/85U HTS/85M HTS/87U

INDUSTRIAL PUMP MECHANICAL SEAL

CARTRIDGE SEAL FOR PUMPS



HTS/90B33 HTS/90B34 HTS/90B35 HTS/90B36 HTS/90B42

WAVE SPRING SEAL



HTS/M70W-1 HTS/M70W-2 HTS/M70W-3

TEFLON BELLOW SEAL



HTS/20C HTS/20M HTS/20S HTS/20R

SINGLE SPRING SEAL



HTS/150 HTS/75U HTS/150S HTS/150S HTS/2U

RUBBER BELLOW SEAL



HTS/50U HTS/MG12 HTS/MG1

SINGLE SPRING SEAL FOR DAIRY INDUSTRIES



HTS/14/F

METAL BELLOW SEAL



HTS/M65 HTS/M46 HTS/M44 HTS/M45 HTS/M45C



HTS/51U HTS/52U HTS/54U



HTS/53U HTS/55C HTS/55S

GRUNDFOS SEAL



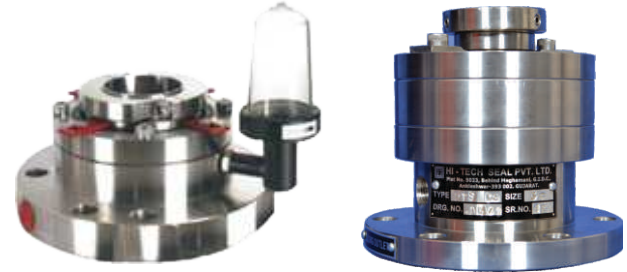
SINGLE DRY SEAL FOR AGITATORS



HTS/SD1

HTS/SD2

SINGLE BALANCE SEAL FOR AGITAORS



HTS/SH3

HTS/SH4

DOUBLE MECHANICAL SEAL FOR AGITATORS



HTS/DS1

HTS/DM2

ROTARY UNIONS



HTS/15/R

CHEMICAL PROCESS PUMPS



DESIGN CONSTRUCTION DETAILS:-

Casing, Stuffing box and Impeller are offered in Various Material

- Polypropylene • UHMW • PFA • FEP • PVDF
- Glass-Fibre Reinforced polypropylene
- PTFE
- * Offer as standard

MECHANICAL SEAL:-

As single externally mounted PTFE bellows Mechanical Seal with various face combination is offered after confirming chemical compatibility.

- | | | |
|-----------|-----|---------|
| • GFT | v/s | CERAMIC |
| • GFT | v/s | SILICON |
| • CARBON | v/s | CERAMIC |
| • CARBON | v/s | SILICON |
| • SILICON | v/s | SILICON |

THERMOSYPHAM



HAND PUMP



GLAND PACKING



PUMPS SPARES



SEALS SPARES



SPRINGS

SHAFT GLAND SLEEVE



MOC: SS304, SS316, ALLOY 20,
HESTOLLOY-C, TITANIUM, MONAL, M.S, EN8

FITTING ITEMS



BEARING BUSH (CARBON / SILICON)



ELASTOMER O RING
SILICON, NEOPRENE, FEP, TTV
KALREZ, VITON, PTFE, GFT, EPDM



CERAMIC STATIONERY

CERAMIC SLEEVE



MOC: TUNGSTEN CARBIDE (T.C), SILICON CARBIDE (SIC), STELLITE