



RAJ COOLING SYSTEMS PVT. LTD.

EARLIER KNOWN AS (RAJ FIBER GLASS)

Survey No.31, Plot No.58, B/H. Hotel Krishna Park,
Nr.Falcon Pumps Pvt.Ltd, Gondal Road,
At.Vavdi, Rajkot-360 004 (Gujarat) INDIA.



Ph:- (0281)-6592032
Mo:- +91 972 778 7603
Email:- Info@rajcooling.com

www.rajfiberglass.com



"Quality Is Our Qualification"

AN ISO 9001:2008 CERTIFIED COMPANY

Manufacturer & Exporter

Air Cooler, Cooling Tower, Air Ventilator,
Air Handling Unit, H.V.A.C, Centrally Cooling System,
Chiller, Hopper Dryer,
Hopper Loader & Poly Carbonate Sheet

FRP Cooling Tower



Natural Cooling Tower



Round Cooling Tower



Square Cooling Tower

Cross Flow Cooling Tower FRP Cooling Tower



Multi Cell Cross Flow Cooling Tower



Cross Flow Cooling Tower



Cooling Tower FEATURES AND ADVANTAGES

Applications

Aluminium Die Casting Machines / Air Compressors / A.C Plant & Cold Rooms / Blow Moulding Machines / Chemical Industries / Glass Mfg. Plants / Dairy, Citrus & Other Food Industries / Distilleries & breweries Plants / Herbal, Aromatics & Extraction Plants / Plastic Injection Moulding Machines / Soap Factory & Foundry

Features

- :- A Close Approaches
- :- Greater Thermal Efficiency
- :- Higher Energy Saving
- :- Easy Maintenance
- :- Economy of Initial as Well as
- :- Running Cost With Longer Life
- :- Exclusive One Year Warranty
- :- Vertical Air Discharge
- :- Efficient Drift Eliminators
- :- Lower Operating Cost
- :- Superior Lower Design
- :- Industrial Grade Motors
- :- Reliable, Accessible Components
- :- Motor And Fan Assembly
- :- Eliminates Splash Out Red

- :- Solve Water Carryover Problem
- :- Reduce Water Usage
- :- Minimize Possibility Of Re-Circulation

Natural Draft Fanless Technology

Features

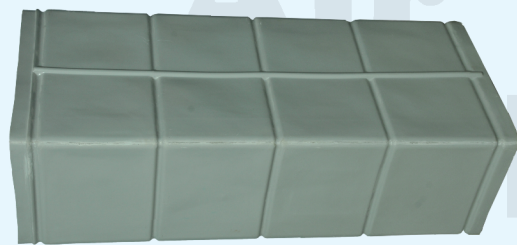
- :- Fan Less :- Energy / Power Saver
- :- Fills Less :- Consistence Cooling & Maintenance Free
- :- Natural :- Better Cooling Efficiency
- :- FRP Construction :- Corrosion Free Long Life

Cross Flow Cooling Tower FEATURES AND ADVANTAGES

RAJ Cross Flow Cooling Tower operates according to cross flow principle. The hot water is fed in to a FRP splash box, having target nozzles in the bottom to equally distribute water over PVC perforated V bar fill. by evaporation and direct contact the water transfer heat to air, which is sucked in by propeller type fan. The cold water is collected in a basin at the bottom of the tower for re-circulation.

- :- High efficient honeycomb PVC fills with large surface area with negligible resistance to airflow.
- :- Low maintenance cost, because fan is an only moving part.
- :- High efficient direct driven axial fan.
- :- Light in weight and modular
- :- Corrosion resistant and fire retardant.
- :- Maintenance down time is very low due to inspection window.
- :- Available in multi cell construction, if required.
- :- Versatile Applications.

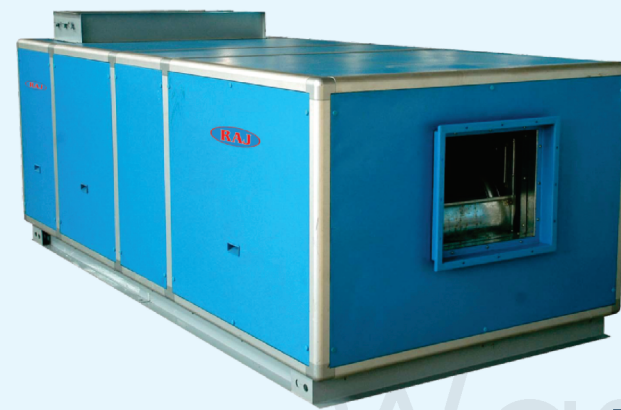
Air Washer And Air Handling Unit (A.H.U.) - (H.V.A.C.)



FRP Panel



Air Washer



Air Handling Unit (A.H.U.)



Air Washer And Air Handling Unit FEATURES AND ADVANTAGES

Raj Cooling Systems Pvt. Ltd. are highly engineered, effectively designed, thoughtfully manufactured and thoroughly tested evaporative cooling units. that are crafted to provide an efficient means of cooling at the least of expense.

designed for compactness and rigid construction these units are just ideal for any type of residential as well as commercial structure.

Range:- 2,000 CFM To 1,00,000 CFM

Blower Types:- Backward / Forward blowers

Bearings:- Self Aligning, Pillow Block Type

Filters:- Synthetic, Washable

Panels:- Fiber Long Life Body

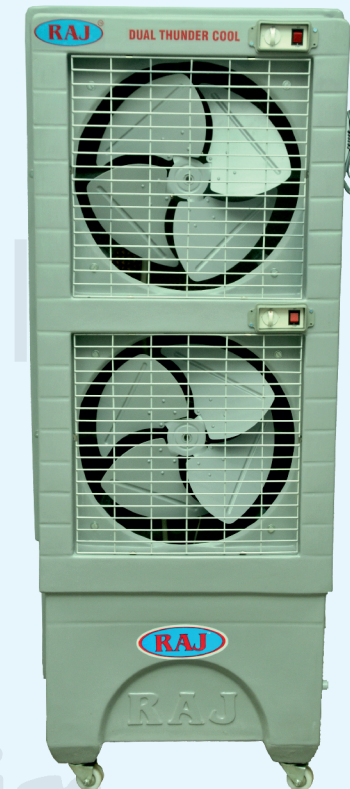
Single Skin:- 18 SWG, Powder Coated

Double Skin:- 24 SWG, Skins with Sandwiched Insulation

Air Cooler



Vortex Cool



Dual Thunder Cool



Duct Master Heavy



Cool House



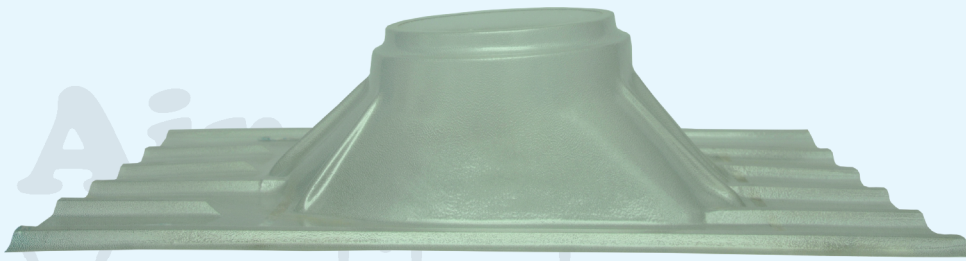
Ice Cool



Thunder Cool

So **Refreshing Cool Air** Just Plug In And **START!**

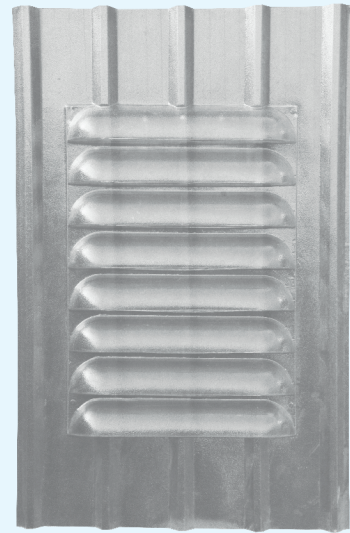
Air Ventilator



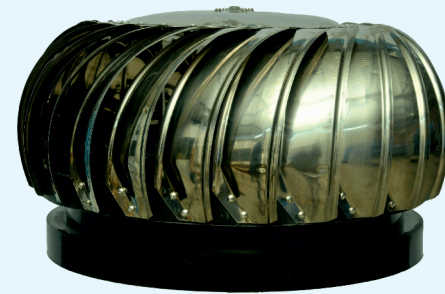
Polycarbonate Base Plate

Features

- Two Side UV Coated
- Better Transparency
- Long Lasting
- Light weight



Polycarbonate Louver

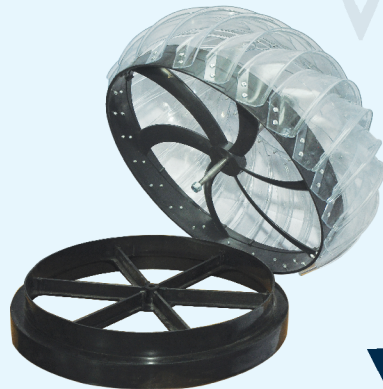


Aluminium Double Exhaust Air Ventilator



S.S Double Exhaust Air Ventilator

First Time
In India 24"
Double Exhaust
Fan.



Polycarbonate Double Exhaust Air Ventilator

Air Ventilator FEATURES AND ADVANTAGES

Ventilators utilities wind energy to rotate its vanes and as the vanes moves it starts pushing out the air filled in between the vanes because of centrifugal force, and out-side flow of air creates a low pressure zone in the inner area of ventilator.

- :- A Translucent Opal Base Which Allows 22% of Natural Day Light Inside the Building.
- :- UV Stabilized suites all short of slop roofs can be installed to deep rib profile.
- :- Impact and Thrust Resistant Easy & Quick to Install.
- :- Light Weight available in variety of colours.

- :- No Electricity
- :- No Operating Cost
- :- No Maintenance
- :- Give You Fresh Filling
- :- Great Power Saver
- :- Runs On Wind Energy

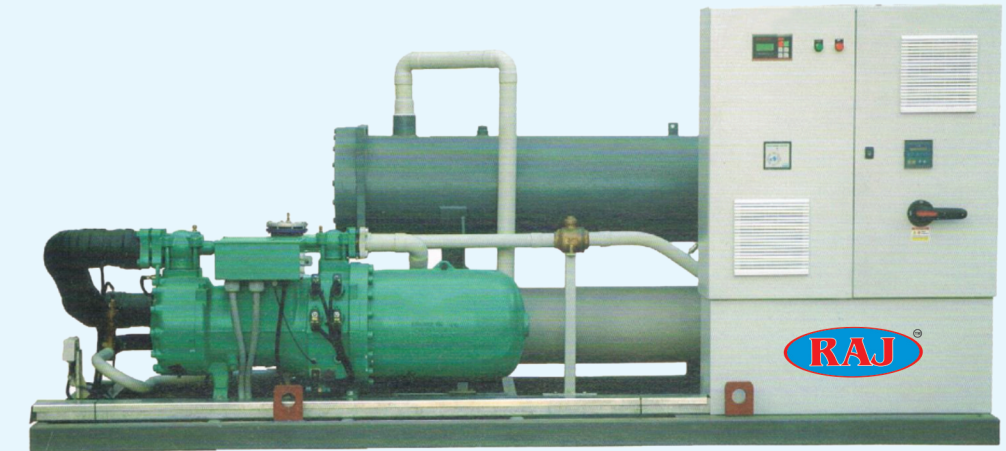
Application

- :- Industrial Sheds
- :- Factories & Foundries
- :- Oil Mills & Forging Units
- :- Chemical Factories
- :- Restaurants
- :- Paint Rooms
- :- Packing Rooms
- :- Boiler Rooms
- :- Hospitals
- :- Poultry Farms

Chiller



Chiller



Chiller



Hopper Dryer

Hopper Dryer Features

- Designed Specifically for Regrind & Dusty Material
- No Perfomated Cone & Holes Jamming
- No Material Blockage Material Change In quick & Easy
- Online drying saves power up to 70% as compares to oven.
- Complete stainless steel construction.
- User friendly design comprising of viewing window.
- Sliding plate, hinged structure makes operation easier.
- Dryers are equipped with 7 days time which helps in programming your production schedule.

Chiller FEATURES AND ADVANTAGES

Chiller Is capable to connect 4 to 5 injection moulding machines or more than one extrusion line.

Large insulated stainless steel tank.

Level electrode dry running protection.

Housing with easy access to all components.

Suction gas cooled fully-hermetic compressor with crank case heating.

Sight glass with moisture indicator, filter, dryer, cooling agent filling and oil.

Electrical cabinet of accommodation all necessary power and control components.

Function control of all main components with visual indication.

Maintenance free high volume, high pressure water circulation pump.

Freeze protection.