

**SATISFACTORILY GYPSUMIZED**

## **SOME OF OUR ESTEEMED CLIENTS**

Anshul Group  
Adani Group  
Alpine Housing Development Corporation  
Bagad Group  
Brigade Group  
Capacite Infraprojects Ltd.  
Embassy group  
Gannon Dunkerley & Co. Ltd.  
Gera Development Pvt Ltd  
Godrej & Boyce  
Goel Ganga Group  
JMC Projects Pvt. Ltd.  
K Raheja Corp  
Kalpataru Ltd.  
Kolte Patil Developers Ltd.  
L & T Limited: (Daicec- Bandra, Omkar- Malad, Seawoods Railway Station  
Integrated Commercial Project - Seawood, Crescent Bay – Parel  
Lemon Tree Hotels  
Lodha Group : (Lodha Palava, Lodha Venezia, Lodha Casario, Pawar Public School, The Park)  
Lokhandwala Infrastructure  
Mahindra Life Spaces  
Marathon Realty  
Peninsula Land  
Prestige group -Prestige Ferns - Bangalore, Prestige Lakeside Habitat -  
Bangalore, Prestige Sunrise Park  
Runwal Group  
Shapoorji Pallonji  
Sheth Developers  
Tata Housing



3b, Mapkhan Compound, Mapkhan Nagar, Marol Maroshi Road, Andheri (E), Mumbai - 400 059.

**Contact:** +91 65345120 / +91 43471098 ■ **Email:** info@buildon.co.in

ARE YOU  
**GYPSUMIZED!!**  
THINK GYPSUM, THINK BUILDON

**GYPSUM  
THAT  
WILL  
CHANGE  
THE  
FACE  
OF  
DESIGN  
&  
CONSTRUCTION.**



[www.buildon.co.in](http://www.buildon.co.in)



## HOW ARE WE DEFINED

Buildon is one of the leading manufacturer and importer of Gypsum plaster and Gypsum blocks, first of its kind embarking in India. At our factory we are producing the finest quality of gypsum plaster in the world. Being pure white in colour and hardness over 40% more than any other gypsum in Indian market makes it a world class product and the highest grade of gypsum in the construction arena.

## OUR COMPANY OVERVIEW



## HOW ARE WE 'GYPSUMIZING'... A BIRD'S EYE VIEW

Buildon is Mumbai based company providing world class gypsum across major cities of India. Seeing the huge gap between demand and supply of quality Gypsum plaster we introduced the same in Indian Market and now providing the finest quality of Gypsum plaster to our valued customer. Our products are manufactured with an advanced technology which has attained the much-desired excellence under strict quality control system. We follow and maintain extremely high international quality management systems to manage our production.

## HOW & WHY ARE WE THE MOST PREFERRED

The manufacturing facility is well equipped with state of art fully automated Gypsum processing machines, and backed by concrete resource support and supervision by highly qualified and experienced foreign engineers and a well-trained work force .

Buildon has created a huge network of marketing offices throughout the country to ensure uninterrupted and timely supply to all their customers. We have our own marketing offices near the major seaports of India to ensure faster delivery of imported gypsum at your doorstep.

We have a highly qualified team and experienced team of young and enthusiastic employees for all technical support who are determined to cater all its customers needs to their utmost satisfaction.

## WHO ARE WE REACHING TO

Buildon is supplying their quality Gypsum to many reputed **BUILDERS ,ARCHITECTS, PROJECT CONSULTANT AND CONTRACTORS** adding values to their prestigious projects.

## BUILDON GYPSUM PLASTER



## HOW DOES IT SPEAK QUALITY

**BUILDON Gypsum** plaster is produced from the light powder-density rock sourced from the purest mines. **The advantage of our Gypsum is that it is the highest grade of Gypsum being pure white in colour and having a hardness of about 40% more than any other Gypsum Plaster available in the Indian market. This Gypsum plaster can be directly applied on all surfaces, we do not need to sand cement plaster the walls. The coverage in a 25Kg bag is 20 Sq. Ft. with a thickness of 12mm. The Fineness of 250 Mesh and purity over 90% gives the best atomic bond and an absolute mirror finish.**

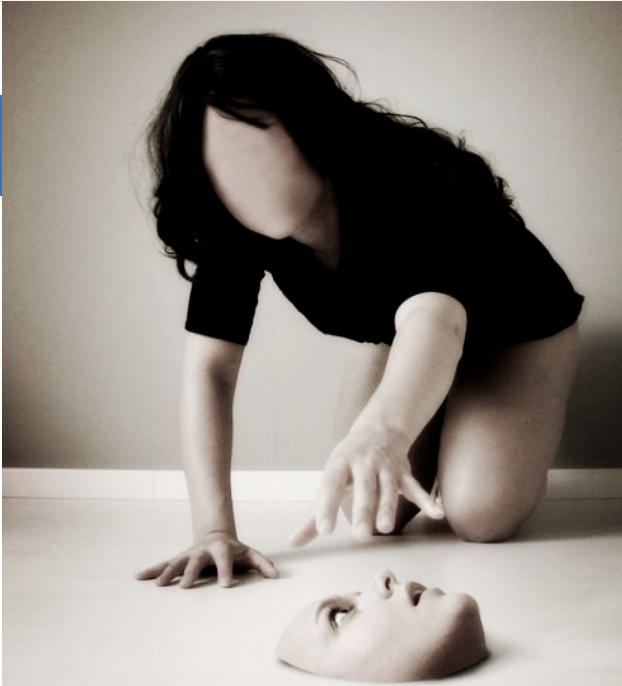
## APPLICATION ACROSS INDUSTRIES

### A) GYPSUM PLASTER IN BUILDING AND CONSTRUCTION

Gypsum plaster is used in all types of construction, from residential to commercial projects. Gypsum plaster is also used for making plasterboard, decorative cornices, plaster blocks and Gypsum based self levelling screeds.

### B) OTHER INDUSTRIES EXPLORING & USING BUILDON GYPSUM PLASTER

- Cement Industry
- Sanitaryware
- Agriculture
- Bandages & dentistry



## ADDING A FACE TO YOUR DESIGN & CONSTRUCTION



## BUILDON RANGE OF PRODUCTS



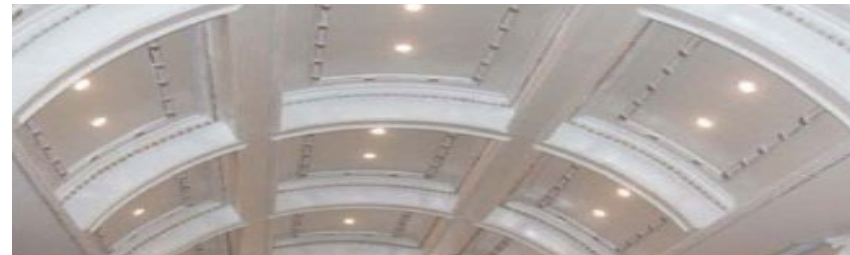
BUILDON Gypsum products in the construction space are the material of choice because of their unique properties. It has excellent insulation properties both thermal and acoustic and can offer very good passive fire protection, moisture resistance, impact resistance and vapour control when used in combination with the right systems.

### GYPSUM PLASTER ONE COAT

The distinguished advantage of the **BUILDON Gypsum Plaster-one coat** that it is made out of the highest grade of Gypsum **being pure white in colour and having a hardness of about 40%**, which is more than any other Gypsum Plaster available in the Indian market. This Gypsum plaster can be **easily applied directly on all surfaces**, we do not need to sand/cement/plaster the walls. The coverage in a 25kg bag is 20 Sq. Ft with a thickness of 12mm. **The fineness of 250 mesh and purity of over 90% gives the best atomic bond and an absolute mirror finish.**

### TECHNICAL SPECIFICATIONS OF GYPSUM POWDER

Purity (whiteness)	90%
Fineness	Mesh 250, Residue 3%
Setting Time Initial Final	12 - 15 min. 24 - 30 min.
Bending Strength (Dry)	50 Kg / Cm <sup>2</sup>
Compressive Strength (dry)	133 Kg / Cm <sup>2</sup>
Dry Bulk Density	750 Kg / m <sup>3</sup>
Coverage at 12mm thickness (25 Kg bag)	20 Sq. ft.



### APPLICATION OF GYPSUM PLASTER

1. Surface must be clean, dry, firm & free of dust.
2. Important properties like soluble salt content, thermal characteristics, shrinkage, strength, suction bonding properties etc. of the background which is to be plastered, should be evaluated before application.
3. Gypsum plaster one coat can be applied directly on most of the surfaces like Brick wall / Fly ash brick / Siporex blocks / Concrete surface / Sand cement plaster wall etc.
4. Suitable fixture can be fixed after the plaster has set, you can put up fixtures of varying weights. Smaller ones can be supported by using steel hooks and pins, while heavier frames and objects can be accommodated with plugs and screws, or suitable fixtures, adequately penetrated into the background to ensure firm hold.

### DIRECTION OF USE

1. The right way to mix is to add powder to water not water to powder
2. Avoid mixing more powder that can be used within 12 minutes - 15 minutes.
3. Do not temper or mix fresh material once a mix has started to set
4. After taking the required amount of plaster, always fold the open end, to protect the plaster from moisture.
5. Setting time cannot be altered by diluting the mixture with For longer setting time BUILDON retarder should be added

- **Single coat Application**
- **Very smooth finish**
- **Can be applied directly on all walls / surfaces**
- **Free of shrinkage cracks**
- **Zero maintenance**
- **Compatible with all types of paints**
- **Pure white in colour**

# BONDIT-151



BONDIT is high performance bonding agent for Gypsum on concrete blocks/RCC surfaces. Further it has waterproofing properties and hence it prevents leakages from the cracks in the plaster.

## ADVANTAGES

1. Ready to apply aingle coat Application.
2. Very strong chemical bond is created.
3. No hacking required on concrete surface. Hence prevention of microcracking in concrete & saving of labour.
4. Coverage is about 100 sft per kg.
5. Bonding strength is more than 2kgs/sft.
6. PH value is 7-9.
7. It is an elastomeric material & hence can withstand movements in the structure without cracking.

BONDIT-151, is a mixture of Polymer-Cement composite and can be put to multiple uses.

- Waterproof Coating
- Crack Sealing
- Bonding of Gypsum
- Concrete Repairs
- Tile Fixing on W alls
- Fixing Tile on Tile



### Waterproof Coating

1. Clean the concrete surface with brush
2. Wash the concrete surface with water one hour before application of Bondit-151
3. Fill any depression with mixture of cement, silica sand & Bondit-151 in the ratio of 1:1.50:0.50
4. Mix Bondit-151 & cement in the ratio of 1:2
5. Apply first coat of mixture on moist concrete
6. After 4 to 6 hrs apply 2nd coat of mixture
7. Third coat also can be applied if required
8. Fresh coated surface should not be submerged in water for 48 hours
9. After air drying for 4 to 6 hrs, cure the coated surface by spraying water for 24 to 48 hours
10. Surface is useable after 24hours of treatment
11. On terrace for top coat white cement can be used

### Bonding Gypsum Plaster

1. Clean the concrete surface
2. Apply Bondit-151 with brush or spray machine
3. Within 30 minutes when bondit-151 is tacky apply gypsum plaster



### Fixing tile on tile

1. Clean & wash old flooring
2. Mix Bondit-151 & cement in the ratio of 1:3 to 1:5 to make paste depending on desired viscosity
3. Apply cement-Bondit-151 paste on the back of new tile
4. Press the new tile on old flooring
5. Use the new flooring after 48 to 72hours

### Crack Sealing

1. Make V-groove on the face of the cracks
2. Make the crack wet
3. Mix Bondit-151 & cement in the ratio of 1:2 & apply on the crack
4. Add more cement to the Bondit-151 cement mixture to

- make suitable paste & fill the crack
5. Grey or white cement can be used

### Concrete Repairs

1. Clean the pocket & wet with water
2. Apply in the pocket cement Bondit-151 slurry (2:1ratio)
3. Mix Bondit-151, cement & silica sand in 1:2:4 to 6 ratio & fill the pocket or large cracks etc.

### Tile fixing on wall

1. Wet the already plastered wall with water
2. Mix Bondit-151 & cement to desired consistency & apply on the back of tile & fix the tile on plastered surface

## TECHNICAL SPECIFICATION

BUILDON Bondit 151 is used for high strength bonding of Gypsum Plaster/Cement plaster to concrete blocks RCC. No hacking is required

Chemical Composition	: Modified Hybrid System.	Film Characteristics	:Clear, forms flexible system with cement
Physical Appearance	: Milky White Emulsion	Handling & Storage	:Protect from frost. Containers once opened should be shut tightly to prevent contamination. Stocks should be used on a first in, first out basis.
Solid Contents	: More than 40%		
Viscosity	: 1500 cps Max		
PH Value	: 7-9	Packing	:20kgs HDPE Jerry cans
Butt joint strength	: 2000gsm/scm		

## PRECAUTIONS:

If the material goes in the eyes wash with water till the burning stops or immediately visit doctor.

# BUILDON GYPSUM BLOCKS



**BUILDON Gypsum Blocks** are for all Internal Wall requirement which will benefit not just in better and faster construction but will also reduce the cost as compared to Conventional Wall or Brick.

The blocks which measure 500mm x 666mm x 80mm have excellent acoustic and fire performance.

The solid gypsum blocks are formed with a smooth face that does not need plastering and is ready to accept either a paper, tiled or painted finish.

Each block is moulded with an interlocking tongue and groove joint in the horizontal and vertical edges. The joints are bonded with gypsum adhesive (BUILDON Block Bond)

**BUILDON Gypsum Block- are environment friendly, creative and effective, made from best quality gypsum ideal for all partition walls.**

## TECHNICAL SPECIFICATION

Face Dimensions	500mm x 666 mm	
Thickness	80mm	
Weight per block	Approx 22kg	
Compressive strength	66 Kg/cm <sup>2</sup>	
Bending strength	11kg/cm <sup>2</sup>	
Thermal Coefficient	0.31 - 1.94 kcal/hr.c	
Acoustic performance	38 – 42 db	
Range of density (%)	High	1100 ≤ P < 1500
	Intermediate	800 ≤ P < 1100
	Low	600 ≤ P < 8500



## INSTALLATION GUIDE FOR BUILDON GYPSUM BLOCK

1. The block should be transported with care and pallets should not be stacked to avoid damage.
2. Blocks should be protected from Water and moisture both during transportation and whilst stored on site.
3. The walls should be set out using either a chalk line or timber runner. The floor should be clean and free from dust, flat and level prior to commencing laying of blocks.
4. The first course of block is laid on a bed of Buildon Gypsum Block Bond. Care must be taken in laying the first course to ensure line and level.
5. In laying the first course of blocks ensure the vertical joints are between the blocks and bonded with Buildon Gypsum Block Bond lightly tapping with a rubber hammer to ensure the tongue and groove interlock and excess adhesive is squeezed out.
6. The second course of block commences with a half block laid on a bed of Buildon Gypsum Block Bond tap lightly into place to ensure the horizontal tongue and groove interlock and excess plaster is squeezed out of the joint.
7. The line and level of the wall should be continuous.
8. The blocks should be continued to be laid such that the vertical joints are staggered between courses.
9. The top course should be completed by cutting the blocks and where necessary incorporating a soft joint between the top of the block and the soffit of the structure to avoid load transfer.
10. Excess jointing plaster should be removed from the joints after approximately 30 Minutes.
11. Intersecting walls should be either bonded in or tied with proprietary metal tie.
12. Opening and chasings for services should be formed using the correct tools such as a wall chasing machine. Chiselling or other impact tools should not be used. The chases should be filled with Buildon Block Bond or Buildon Gypsum Plaster trowelled to achieve a smooth that finish
13. External corners should be finished with an expanded metal.
14. Finishing is subjective and depending upon the quality of finish required. The joints and any other defects in the form of grooves etc can be made good by filling and smoothing with Buildon Gypsum Block Bond. If a higher quality finish is required a slurry coat of plaster maybe applied to the whole of the wall.

# BLOCK BOND

Buildon Block Bond as a product is applied on surfaces of Cement block, Gypsum block and concrete block for bonding.



## TECHNICAL SPECIFICATION

- Usage amount for 1 cm thickness: Approx. 10 kg/m<sup>2</sup>
- Application Temperature: Min. +5°C
- Thickness: min. 2 mm
- Shelf life: 6 months from the date of production. It is recommended to use within 7 days after opening the bag.
- Storage Conditions: The bags should be stored in a dry place.
- Workability time: Approx. 30 minutes (sprinkling beginning=t<sub>0</sub>)
- Strength in flexure: > 2.0 N/mm<sup>2</sup>
- Compressive strength: > 6 N/mm<sup>2</sup>

## PREPARATION AND APPLICATION

- Fill a clean empty container with sufficient amount of water and sprinkle the product carefully on the water (Water/Plaster ratio: 5Kg of BUILDON BLOCK BOND in 3.5 liter of water).
- Wait 2-3 minutes for the floating gypsum to sink by soaking.
- Mix water and gypsum with a mechanical mixer at a low speed or with hand until a proper mixture is obtained.
- It should be applied on the surface with a trowel.



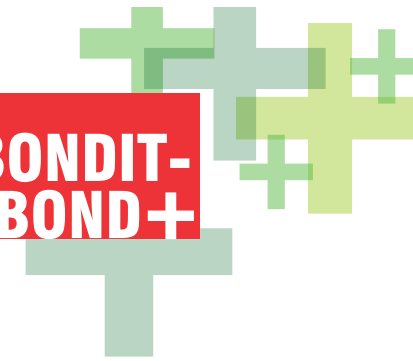
### IMPORTANT:

- Oil, dust, dirt and loose particles should be removed from the surface before application.
- The tools to be used in application and container, in which Buildon Block Bond is to be mixed, should be clean and free of any particles.
- Water or gypsum should not be added to the product once it starts setting and dough form.
- Any impurities such as salt or gypsum as well as high water temperature will reduce the work ability time and surface hardness.



BUILDON BONDIT-PLASTERBOND + is high performance bonding agent for gypsum and sand cement plaster on concrete blocks/RCC surfaces. Further it has waterproofing properties and hence it prevents leakages from the cracks in the plaster.

## BUILDON BONDIT-PLASTERBOND+



### APPLICATION PROCEDURE

- 1) Wash concrete surface with water
- 2) BUILDON Bondit-Plasterbond+ is used for high strength bonding of Gypsum Plaster/ sand Cement plaster to concrete blocks RCC. No hacking is required
- 3) Apply gypsum plaster / sand cement plaster after 24 hours or after the material has dried based on environmental conditions

1. Ready to Apply Single coat Application.
2. Very strong mechanical cum chemical bond is created
3. Green colour of BONDIT gives good visibility.
4. No hacking required on concrete surface. Hence prevention of microcracking in concrete & saving of labour.
5. Coverage is about 45sft per kg.
6. Bonding strength is more than 4.5 kgs/sft.
7. PH value is 8.5
8. It is an elastomeric material & hence can withstand movements in the structure without cracking.



- **Chemical Composition**  
Modified Hybrid System

- **Film characteristics**  
Green granular flexible

- **Physical Appearance**  
Green viscous paint

- **Handling & Storage**  
Protect from frost. Containers once opened should be shut tightly to prevent contamination. Stocks should be used on a first in, first out basis.

- **Solid Contents**  
More than 52.50 %
- **Packing**  
10kgs plastic buckets
- **Viscosity**  
2500 cps Max.
- **PH Value**  
8.5
- **Butt joint strength**  
More than 4500gm/scm



### PRECAUTIONS

If the material goes in the eyes wash with water till burning stops or immediately visit doctor.

Marketed by :



**3B, Mapkhan Compound, Mapkhan Nagar, Marol, Andhari E Mumbai-400 059. India**  
**Tel : 022 65345120 43471098 email info buildpn.co.in, buildonindia gmail.com**