

Product Overview

Automation Technology
Drives & System Solutions



Wonder Systems (India) Pvt. Ltd.

INTRODUCTION

Wonder Systems India Pvt.Ltd, being premier System Integrator for SSD Drives division of Parker Hannifin Corporation (formerly Eurotherm Drives), UK and Italy offers complete Engineering & cost effective solutions, covering Design Concepts, Assembly, Supply, Commissioning and Field services for various Industrial Applications.



Wonder guarantees high- quality personalized service with considerable technical and professional expertise makes us reliable, flexible partner who is capable of providing specialized support. We offer a full range of skills to help you select your ideal product and process solutions, no matter where you are.

There exists a well trained team of Engineers who handle the most complex drive requirements completely. All drafting needs are addressed through computers.

Wonder has one of the most modern and largest facilities in North India with:

- ✘ In-house fabrication using CNC Shearing and Bending Machines
- ✘ 7 Tank metal treatment Process
- ✘ Fully automatic Powder Coating Plant
- ✘ Engineering Designs using e-Plan (RITTA L- GERMANY) Professional series software
- ✘ Fully equipped Assembly Line using latest tools
- ✘ Complete Testing Facility for no load testing of all equipment manufactured
- ✘ In house Software development of PLC, SCADA, HMI, DC drives and AC drives
- ✘ Fully equipped customer training centre as well as on site training facility

COMPANY OVERVIEW

Business Type	Exporter, Manufacturer, Service Provider	Why Us?
Primary Competitive Advantages	<ul style="list-style-type: none"> ● Best quality ● Timely delivery ● Cost effective solutions ● Long lasting customer satisfaction 	<ul style="list-style-type: none"> ✘ In-house fabrication ✘ State-of-the-art technology ✘ Top quality products ✘ Guarantees high-quality and personalized service
Year of Establishment	1990	<ul style="list-style-type: none"> ✘ Believes in timely execution of the consignments ✘ Cost effective solutions ✘ Committed to enhance customers' satisfaction levels
Export Markets	African Countries, Asian Countries, All Countries	
Investment on Manufacturing	Rs. 300 Lacs	
Equipment	Semi-automatic	
Production Type	35	
No of Engineers	ISO 9001	

PRODUCT RANGE	ELECTRICAL CONTROL PANEL	AREAS OF APPLICATION
<ul style="list-style-type: none"> ◆ AC Drives ◆ DC Drives ◆ Digital DC Drives ◆ Analog DC Drives ◆ Servo Drives ◆ Servo Motors ◆ HMI Touch Screens ◆ Communication Systems 	<ul style="list-style-type: none"> ○ PCC Panels ○ MCC Panels ○ APFC Panels ○ DC Drives Panels ○ AC Drives Panels ○ Flying Shear Panels ○ Rotary Shear Panels ○ Hot Strip Mill Panels ○ TMT Rolling Mill Panels 	<p>The range of products manufactured from our end in widely applied in the following areas:</p> <ul style="list-style-type: none"> ✘ Hot Rolling Mills ✘ TMT Mills ✘ Hot Strip Mills ✘ Paper Mills ✘ Printing & Packaging Industries ✘ Wire Drawing Machines ✘ PVC Extruder Machines ✘ Cold Rolling Mills ✘ Wire Rod Rolling Mills ✘ Tube Mills ✘ Cable Industries

MANUFACTURING FACILITY

We at Wonder Systems (India) Pvt. Ltd. (Formerly Wonder International) have organized one of the most modern and largest manufacturing facilities in North India. At our unit we have segmented various departments with

- ✘ In-house fabrication using CNC Shearing and Bending Machines
- ✘ Fully automatic Powder Coating Plant
- ✘ Engineering Designs using E-Plan (RITTAL- GERMANY) Professional 2.0 series software
- ✘ Complete Testing Facility for no load testing of all equipment manufactured
- ✘ In house Software development of PLC, SCADA, HMI, DC drives and AC drives
- ✘ Fully equipped customer training center as well as on site training facility.
- ✘ 7 Tank Metal Treatment Process
- ✘ Fully equipped Assembly Line using latest tools

All these sections of our unit is facilitated with world's state-of-the-art technology to manufacture top quality products. The availability of such well assorted facilities has helped us to stem our company's philosophy of putting the needs and preferences of our customers first.

TEAM

We have employed a well-trained team of Engineers, Technocrats, Quality Analysts, etc., who all are expert in handling the most complex drive requirements with complete precision. The company attributes its phenomenal success to its dedicated staffs, who have worked really hard in order to make the company thrive successfully.



TMT & Wire Rod Mills

WSIPL has the answer to all complex & diverse market requirements and needs to react to diverse requirement from the smallest upgrade solution to the highest technical demands for high speed special Steel grade production. With our concept, our world class electrical equipment, we set the benchmarks for long rolling product market. We offer world-wide proven & extensively pre-configured solutions including Modular Standard Packages as well as global and intelligent service concept with support for the whole life- cycle. We keep you updated about your plant & production by high quality material handling, plant data acquisition & Reporting System.

Wonder Drives solutions for long rolling provides the high flexible solutions required of Modern Drive System Function like Drive Control Operator Control, Diagnostics & Controllers are standardized across the entire Automation System, reducing the resources required for Training & Maintenance.

We have the right drives as well as technological & process control system to fulfil your demand, product quality, stable production, high flexibility and shorter downtimes for product change.

Mill Shears and Saws :

WSIPL offers Electrical & Drive Automation of full-line of hot & cold shears necessary in a bar rod mill for wider variety of requirements such as Head/ Tail Cropping, Dividing, Sampling or Scrapping, Cut- tool length Automation of sign units are available for Rails, medium-large section, large bars and special steel grades where sawing is preferred over shearing.

Bar Finishing Automation :

WSIPL has an extensive portfolio of Automation Solutions to cover the complete range of final processing needs from Counting to Bundling & Stacking everything can be automatized with our solution.

Bar Thermal Processing :

Wonder Systems Automation solution for Quenching Systems for providing efficient cooling of ribbed products to meet virtually any world-wide specifications for Quenched & tempered re-bar.

Thermo- Mechanical Treatment (TMT) :

TMT is made possible by proper control of flow pressure & temperature of Quenching water. The TMT Automation also includes Temperature measurement of hot & cold end of TMT bars using pyrometer.



Hot Strip Mills

Wonder provides state of the art Automation solutions for Hot-Strip Mill Equipments and the modernisation of existing plants to produce Hot-Strip that ensure high- quality production, effectiveness & competitiveness.

The demand for modern grades steel is growing, as are the requirements for product quality, mill productivity & availability. In order to remain competitive new and existing steel plants must meet this challenge in the best possible way.

WSIPL -expertise in Plant layout, Electric Drives & Automation. The Wonder product : Hot Strip mill, Automation equipment, components , drives, electrical & automation systems as well as the full range of technical and service packages to meet demands for highest performance, product quality & operational flexibility for both new & existing mills.

This is the first mill of its kind using all continuous stands right from roughing stand to finishing stand.

Wsipl have supplied the complete turnkey solution for electrical and dc drives and automation. This is fully automatic plant having 9 continuous stands of 2000 kw, 1500 kw, 1000 kw, 1000 kw, 750 kw, 750 kw, 750 kw, 750 kw, 750 kw, 3 vertical stands of 200 kw each, 3 drives at pinch rolls and coilers of 50 kw each. All the drives are dc digital drives.

Apart from this wsipl have also supplied complete electrical for 6 steel tube mills and small strip mill for the same company (shivam dhatu udyog)

Congratulations to ugi engineering works, kolkata and as mechanical, ghaziabad for the mechanical machinery and consultancy support. We wish to do more and more such big projects.



590+ Integrator Series 2

DC Drives

0.75 to 1500 KW

(15-2700A)

The DC 590+ Integrator series is a highly advanced DC drive meets the demands of the most complex motor control applications. Extensive application software (including winder control) as standard together with Function Block Programming and configurable I/O creates a total drive system in a single module.

The DC590+ Integrator Series 2 sees the next step in the development of DC drive technology, derived from over 30 years experience in designing DC drives. With its innovative 32-bit control architecture, the DC590+ has the flexibility and functionality to more than meet the requirements of all applications, from basic motor installations through to the most demanding systems.



SPECIFICATIONS

Power Configuration

590+ Four Quadrant Regenerative; 2 Fully Controlled Three Phase Thyristor Bridges
591+ Two Quadrant Non Regenerative; 1 Fully Controlled Three Phase Thyristor Bridges
Thyristor Controlled Variable Field Supply
Easily configurable to 12 pulse operation with minimal software modification

Overload:

200% for 10sec; 150% for 30sec

Armature Voltage:

$$V_{\text{armature}} = V_{\text{ac}} \times 1.15$$

AC Supply Voltage 50/60 Hz:

200-690V(±10%)

Ambient:

High Energy MOV's	Motor Over temperature
Instantaneous Overcurrent	Heatsink Over temperature
Inverse Time Overcurrent	Thyristor Trigger Failure
Field Failure	Interline Snubber Network
Speed Feedback Failure	Zero Speed Detection
Standstill Logic	Stall Protection

Ambient:

Frame 1 : 4A, Frame 2 & 3 : 10A, Frame 4&5 : 30A
(Details on higher ratings will be provided on request)

Field Voltage:

$$V_{\text{field}} = V_{\text{ac}} \times 0.82$$

Attitude:

500m ASL (Derate 1%/200m above 500m to 5000m max)

Inputs/Outputs:

Analogue Inputs (5 Total - 1x12 bit plus sign, 4x10 bit plus sign)

Analogue (3 Total - 10 bit)

- 1 - Armature Current Output (-10/0/+10V or 0-10V)
- 2 - Configurable

Digital Inputs (9 Total - 24V, max 15mA)

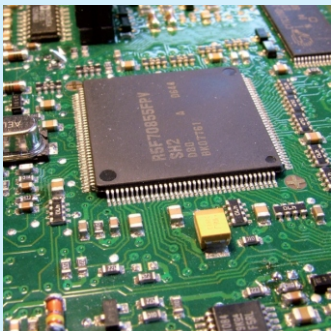
- 1 - Program Stop
- 1 - Coast Stop
- 1 - External Trip
- 1 - Start/Run
- 5 - Configurable

Digital Outputs (3 Total - 24V(max 30V) 100mA)

- 3 - Configurable

Reference Supplies

- 1 : +10V DC
- 1 : +24V DC
- 1 : -10V DC
- 3 : 0V DC



Advanced Control Architecture

Benefitting from the improved performance of a 32-bit RISC processor, the DC590+ Integrator Series 2 delivers enhanced functionality and increased flexibility, making it suitable for use in a wider range of more complex applications

- Faster drive response
- Greater control capabilities
- Increased maths and logic function blocks
- Enhanced diagnostic and programming functionality
- Common programming tools with rest of drives platform



The Global Leaders in Motion and Control Technologies

690+ Integrator Series

AC Drives 0.75 to 1000KW

The AC690+ Series is a single range of AC drives designed to meet the requirements of all variable speed applications from simple single motor speed control through to the most sophisticated integrated multi-drive systems. At the heart of the AC690+ is a highly advanced 32-bit microprocessor based motor control model. This provides an exceptional dynamic performance platform to which can be added a host of communications and control options, enabling you to tailor the drives to meet your exact requirements.

Three phase (380-500V) ratings are available from 0.75 to 1000KW and single phase ratings (220-240V) from 0.75KW to 2.2KW. It provides openloop (V/F), Sensorless Vector and closed loop vector in a single drive.



The AC690+ can be user configured for 4 different operating modes

This mode is ideal for basic motor speed control, or multiple motors driven in parallel. The quick set-up menu and plain language display ensures the quickest and easiest, trouble free start up.

Sensorless Vector Control

High starting torque and tight speed regulation is provided by a sophisticated MRAS (Model Reference Adaptive System) motor control strategy. MRAS provides accurate speed simulation (without the need for any speed measuring transducer) by continually modelling the motor.

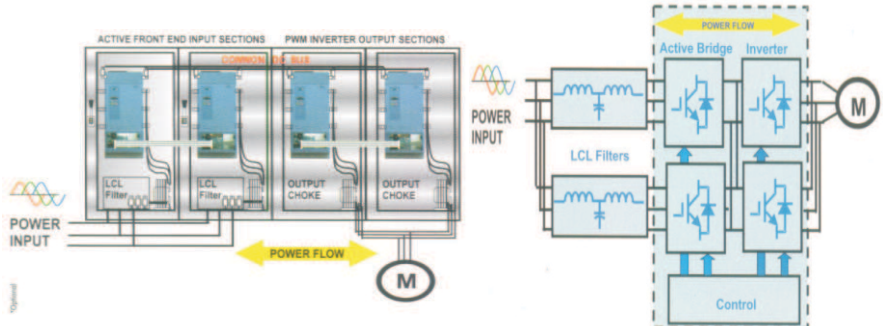
Closed-Loop Vector Control

Full closed-loop flux vector performance can be achieved with the AC690+ by simply adding an encoder feedback 'technology box'. This provides 100% continuous full load standstill torque plus a highly dynamic speed loop (up to 45 Hz bandwidth); more than sufficient for the most demanding of applications.

Active Front-end-Configuration

- Fully regenerative 4-quadrant control
- Eliminates input harmonics
- Unity Power-Factor-No penalties!
- The LCL FILTER is a low-pass design that removes high frequency harmonics
- The CONTROL section provides signals to both bridges.

The Active front end drive eliminates typical AC drive harmonics keeping THD (total harmonic distortion) below 4%, well IEEE519 guidelines



- The INVERTER section is a standard (6) IGBT PWM (pulse width modulated) inverter
- The ACTIVE BRIDGE rectifier is a (6) IGBT PWM bi-directional converter
- The CONTROL section provides signals to both bridges

Specifications:

Power Supply:
220-240Vac±10%; single or three phase ; 380-460Vac (±10%)
three phase (500V option available)

Overload :
Constant torque ratings: 150% for 60sec, 180% for1sec
Quadratic torque ratings: 115% for 10 secs

Ambient:
Constant torque ratings - 0-45°C (40°C with IP40 cover);
Quadratic torque ratings - 0-40°C (35°C with IP40 cover)
Derate from above temperatures to 50°C max
Altitude up to 1000m ASL, derate 1% per 100m above 1000m

Output Frequency:
0-480 Hz

Switching Frequency :
Frame B: 3, 6 or 9kHz;
Frame F, G, H, J and K : 3kHz
Frame C, D, E and F : 3 or 6kHz
(all with audibly silent switching pattern)

Dynamic Braking :
Frame B and C: standard; Frame D, E and F : optional
Inbuilt incoming choke for frame F

Inputs/Outputs:
Analogue Inputs - Total :4 - all user configurable, 10bit (12 bit with systems expansion module)
0-10V, 0 - ±10V, 0-20mA, 4-20mA
Analogue Outputs - Total : 3 - all user configurable, 10bit (12 bit with systems expansion module).
0-10V, 0-±10V, 0-20mA, 4-20mA
Digital Inputs - Total :8 - all user configurable, Nominal 24V DC (30V DC max).
Digital Outputs - Total : 3 - all user configurable
Potential free relay contact 3A at 230 V ac max
Reference Supplies -
1 : +10V DC,
1: -10V DC,
1: +24V DC.

Dual Torque Ratings:
Units from 7.5KW and above can be user selected for either Constant Torque applications (with 150% overload capability) or alternatively for higher Quadratic 'Fan' Torque ratings (with 115% overload capability).

Standards:
The 690+ series meets the following standards when installed in accordance with the relevant product manuals.
CE marked to EN50178 (Safety, LowVoltage Directive)



WSIPL is one of the growing manufacturers of Electrical Control Panels. The firm undertakes the activities such as: Designing, Manufacturing of the various types of Electrical Control Panels, which are as follows:

PCC Panel (Power Controller Center Panel)

We manufacture PCC panel (Power Distribution Board) to control the power supplied to LT motors, MCC panels and transformers who play vital role in any electrical control system. PCC panels are widely used in metals, paper, cement, sugar, wire & cable industry. Usually PCC panel is having modular construction with cable inlet is on either top or bottom of the structure .

We manufacture and distribute PCC panels which are used for attaining maximum and efficient electric power utilization.. PCC panels supplied by us come with a facility to be extended in future to meet the requirement.

Features of our PCC panels are:

- Our panels are fabricated using high quality raw materials and are fitted with reliable controls procured from reliable vendors in the market
- The outer structure of the panels are coated using high graded powder coating which makes it long lasting and can withstand any climatic condition
- We can make customized PCC panels to meet the custom requirement of our client in accordance with industry standard



MCC Panel (Motor Controller Center Panel)

We offer MCC panel which are designed to meet a specific requirement of controlling electric motor and loads. All the working parameters of an electric motor are taken into account while designing MCC (Motor control center). These MCC Panels are designed with utmost care and stringent quality inspection to ensure client satisfaction. This range is available in standard as well as in customized size.

We are instrumental in offering a wide range of MCC Panels that are highly demanded in the market for a variety of power distribution processes. Owing to their excellent performance and minimum maintenance, our products are widely demanded in various industries like metals, paper, cement, sugar, cable and wire etc.

Features of our MCC Panels are:

- Manufactured using high grade raw material that makes it sturdy and corrosion resistant
- MCC Panels are fabricated in standard as well as customized sizes meeting all the diversified needs of our clients.
- Our MCC panels are designed and manufactured using advanced technology which makes them stand in international markets



AC Drives

650 / 650V AC Drives 0.25 to 110KW

The AC650 and AC650V series is a family of AC drives that provides a no-fuss, cost effective solution for the simplest to most complex open-loop AC motor control applications.

The AC650 has single key selectable pre-programmed applications so set-up is quick and easy without unnecessary complications. In addition the AC650V has the added benefit of an ultra-high torque sensorless vector algorithm and the control flexibility of fully configurable Function Block Programming. Powers are available up to 110kW on 400V threephase supplies and 1.5kW on 230V supplies and all units are available with integral EMC compliant filters. With the AC 650 Series you are in control of your application immediately - no complicated set-up procedures, no confusing menu navigator : just quick and easy operation straight from the box.



FEATURES

Power Supply:

Single phase units : 220-240Vac $\pm 10\%$; 50-60Hz $\pm 5\%$
Three phase units : 380-460Vac $\pm 10\%$; 50-60Hz $\pm 5\%$

Overload:

150% for 60 seconds

Ambient:

0-40 °C

Environmental Protection:

IP20

Inputs/Outputs

Analogue Inputs – 2 : Speed control (0-10V, 4-20mA)

Analogue Outputs – 1 : User configurable output frequency / load (0-10V)

Digital Inputs – 3 (650V 6) : User configurable start/stop/direction/pre-set speeds (8)

Digital Input/Outputs – 1 (650V 2) : User configurable as inputs or outputs

Digital Relay Outputs – 1 : User configurable relay output (1A @ 240V)

All outputs configurable for; at (not at) speed / at (above) min speed / running (stopped) / healthy (tripped) / above (below) preset load.

Motor Thermistor Input

Inputs/Outputs

6 Button password protectable keypad giving control of

- start/stop
- raise/lower speed
- menu navigator
- direction
- parameter setting

Back lit LCD giving 4 digit readout of

- output current
- setpoint frequency
- output frequency
- drive rotating warning
- status alarms



Analog DC Drives

512C DC Drives Upto 32 Amps

Isolated control circuitry, a host of user facilities and extremely linear control loop makes the 512C ideal for single motor or multi-drive low power applications.

Designed for use on single phase supplies, the 512C is suitable for controlling permanent magnet or wound field DC motors in speed or torque control.



Characteristics and advantages

- Isolated input Circuitry
- Multiple inputs for reference speed/current
- Integrated Field Supply
- Extremely linear control loops

Power Supply:

Main supply - 110-115V, 220-240V or 380-415V±10% user selectable, single phase 50-60Hz±5%

Ambient:

0-40 °C upto 1000m ASL without derating

Overload:

150% for 60 seconds

514C DC Drives Upto 32 Amps

The regenerative 514C DC drive offers full four-quadrant control of DC motors from single phase supplies. As such it is ideal for applications involving overhauling loads or where rapid and accurate deceleration is required.

Together with the non-regenerative 512C, they offer the perfect solution for lower power single motor and multi-drive applications.



Characteristics and advantages

- Isolated input circuitry
- Multiple inputs for reference speed/current
- Integrated pilot relay for main contactor
- Integrated field supply
- Extremely linear control loops.

Power Supply:

Main supply - 110-500V±10% user selectable.
Auxillary supply- 110/120 or 220/240V ±10% user selectable, single phase 50-60Hz±5%

Ambient:

0-40 °C upto 1000m ASL without derating

Overload:

150% for 60 seconds

TS 8000 Touchscreens



TS 8000 - a family of web-enabled graphic operator interface stations poised to revolutionize machine control.

TS 8000 provides a user-friendly, powerful graphical HMI touchscreen and much more.

With over 30 popular PLC drivers supported, built-in Ethernet, and direct communication with all Parker SSD Drives products. TS8000 has a handle on all your drives system control needs.

FEATURES

- Available in sizes 3", 6", 8", 10" and 15" for easy mounting
- On board comms support for over 30 popular PLC Drivers
- Built - in Ethernet
- Remote monitoring and control
- Built-in Multi-language programming
- Built-in symbol library with over 4000 symbols
- Support for .BMP, .JPG, and WMF files for more graphics power

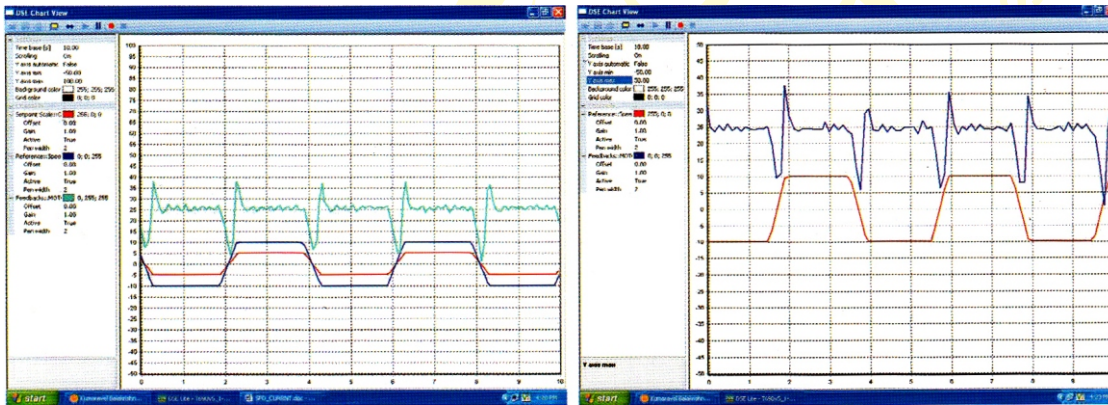
Software Tools

DSE Lite

Drive System Explorer (DSE) Lite is the new drive configuration software tool, with the help of which drive configuration has now become uncomplicated and effortless. This new addition from Parker SSD Drives makes the drive configuration so quick and simple that the design and production engineers can now minimize the set up and configuration time of drive to improve their efficiency.

DSE Lite software can be used the 890, 690+, 650, 590+ series range of drives available from SSD Drives and works with Windows XP™ and Windows Vista™ operating systems.

DSE Lite combines the features of CE Lite (Configuration Editor Lite) and DSD (Drive System Designer), the two previous software products for drive configurations, into a single application with a modern interface and more advanced features. This new software supports user-defined configurations and offers real-time monitoring and charting, with on-line help facility for drive function blocks. It can extract drive parameters into an open template.

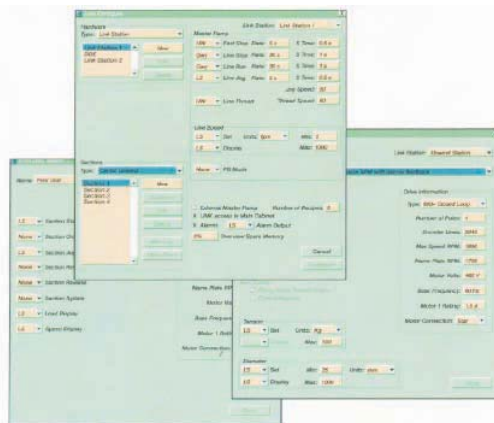


The 'frame' dependant parameters in the templates are displayed in color. In this software, the unique feature of accessing data online on oscilloscope is also available. The Oscilloscope will set-up a real-time data acquisition facility inside the drive firmware, wait for data to be ready, retrieve the data and display it. This is a tool to capture and display fast signals from external or internal triggers. You can add a parameter to the Oscilloscope either from an ONLINE configuration or from the ONLINE Parameter View.

DSD - Drive System Designer

In its standard form DSD - Drive System Designer - is an intuitive, easy to use configuration, set-up and monitor software package that can be used with any of powerful LINK AC and DC drives. DSD makes light work of even the most sophisticated multi-drive systems by enabling the multitude of LINK software function blocks' to be configured using standard click and drag operations. DSD is completely graphical and self-documenting.

But DSD can go far beyond a configuration tool - the optional "Autoconfigure" function turns DSD into the worlds most advanced drive design software. It allows the user to design complete multi drive systems in minutes, designs that previously would have taken days of expert engineering and debugging time.



From a standard single line diagram of the machine or process the user simply enters basic parameters (line speed, web tension etc) and functions (winder, nip drive etc) - the software does the rest. Literally hundreds of man-years of drive system expertise are built into DSD - and ready for you to take immediate advantage of.



OUR CLIENTS List

OUR CLIENTS IN INDIA

ANDHRA PRADESH

1) Kamakshi steel, Vijaywada

GUJRAT

2) Vijay Steel Ltd, Bhavnagar

HARYANA

3) Ashiana ispat ltd, Bhiwari

HIMACHAL PRADESH

4) Chandigarh Iron & Steels Ltd, Brotiwala

5) Him Alloys (P) Ltd, Amb

6) Sidhi Vinyak Tor Pvt Ltd Nalagarh

7) Sood Steels, Kandrori, Damtal

8) HM Steels, Kala Amb

JAMMU & KASHMIR

9) R.b. Jodhamal Ind. Pvt. Ltd Jammu

10) Shri balaji PIGMENTS ltd., Kathua

11) New Jammu & Kashmir Rolling Mills

12) Kashmir steels ltd, Jammu

13) KNK Chemicals Steel Rolling Mill, Samba

14) Vijay Steel Instruies, Jammu

JHARKHAND

15) Smridhi Ispat, Jhumritliya

16) Divine Alloy & Power Co. Ltd, Ranchi

17) Lal Steel(P) Ltd., Giridih

KARNATAKA

18) V.R K.P Steel Rolling Mill, Bangalore

PUNJAB

19) Gian Steel Mill, Mandi Gobindgarh

20) Bharat Ispat Udyg, Mandi Gobindgarh

21) Fortune Metals Ltd, Mandi Gobindgarh

22) Bansal Alloys & Metals Pvt Ltd. Mandi Gobindgarh

23) Prem Steel & Allied Industries, Mandi Gobindgarh

24) Doaba Steel & Allied Industries, Mandi Gobindgarh

25) Rasik Industries Pvt Ltd. Mandi Gobindgarh

26) Shri Ram Jain Steel Mill Mandi Gobindgarh

27) Sri Salasar Strips Ltd Mandi Gobindgarh

28) Madhav Udyog, Mandi Gobindgarh

29) Sandip Steel & Agro Ind Mandi Gobindgarh

30) Pearl Steel, Mandi Gobindgarh

31) Samana Alloy Mandi Gobindgarh

32) C.P. Rolling Mill Pvt Ltd, Mandi Gobindgarh

33) Samana Ispat Pvt Ltd. Amlah Road, Mandi

Gobindgarh

34) Aar Kay Industries Pvt Ltd., Mandi Gobindgarh

35) Arora Iron Ludhiana

36) Garg Industries, Machiwara

37) Garg Furnace Ltd., Ludhiana

38) Renny Steel Rolling Mill , Ludhiana

39) Prs Rolling Mill, Derabassi

40) Allied Recycling Ltd. Ludhiana

41) Sada Shiv Castings Ltd Dera Bassi

42) Surendra Steel Rolloing & General Mills,

Malerkotla

RAJASTHAN

43) Amar Partap Steel Pvt Ltd Jaipur

44) JLC Electromet Ltd., Jaipur

45) Vinayak Metal Steel Pvt Ltd., Jaipur

UTTRAKHAND

46) Rukmani Steels, Haridwar

47) Rana Global, Laksar, Haridwar

48) Fortune Metaliks Ltd., Raipur

49) Parshotam Steels Ltd Rurki

50) Haridwar Rolling Mill, Laksar

UTTER PRADESH

51) Golden Strips Ltd., Kanpur

52) Rana Alloy Muzaffarnagar

WEST BENGAL

53) Balmukand Steels Ltd, Kolkata

54) Rashmi Steel Ltd., Kolkata

55) Vasudev Ispat (P) Ltd.,Kolkata

56) Shivam Dhatu Udyog, Durgapur

57) Shri Ambika Metalics Pvt Ltd., Kolkata

58) C.P. Re-Rollers Ltd., Durgapur

OUR INTERNATIONAL CLIENTS

BANGLADESH

1) P.H.P. Ispat

2) Elite Iron & Steel Industries Ltd

3) Chakda Steels

4) METROCEM

BOTSWANA

5) Pula Steel & Casting Manufacturers Pvt Ltd.

EGYPT

7) Advance Electronic Engineering Co.

KENYA

8) Accurate Steel Mills Ltd.

9) Steel Makres Ltd.

10) Nails & Steel Product Ltd.

11) Tri Star

12) Bhachu Industries Ltd., Nairobi

NIGERIA

13) Westcom

14) Galaxy Promoters

15) Monarck Steel

16) Dolphin Steel

17) AKS Steel

18) Land Craft Steel

PAKISTAN

19) S.J. RE ROLLING MILLS

20) Razaque Steel

21) Mugal Steel

22) Agah Steel

TANZANIA

23) Steel Masters Ltd

UGANDA

24) Tembo Steel

SAUDI ARABIA

25) Salman Al Johar

26) J.C Steel M.Gobindgarh

SUDAN

27) Gaid Steel

Wonder Automation Training Division

WATD (Wonder Automation Training Division) is the Automation Training Division of Wonder Systems India Private Ltd. WSIPL is a ISO 9000 certified company establish in 1996 and a Premier ATC of Parker Hannifin USA. We Provide PLC, AC Drives, DC Drives, HMI, SCADA training for fresh / experienced Diploma / B.Tech in the region of Northern India.



WHY US!

We have the privilege of introducing ourselves as the only training Institute in India for providing theoretical as well as practical training of following live projects.

- A) PLC - Siemens, Ge-fanuc, Delta, Unitronic, Schneider, Allen Bradely, L&T, CO- Trust, ABB, Kinco.
- B) AC Drives - Parker, Siemens, Crompton, ABB, Allen Bradley, Danfoss, Delta, Powteran, Yaskawa.
- C) DC Drives - Parker, Siemens, ABB & Wonder.
- D) HMI/TS - Parker, Delta, Kinco, Ge-fanuc, QPT, Unitronic, Schneider & Co-Trust.
- E) SCADA Win CC, Cimplicity, Wonderware & Intractx.



Wonder System (India) Pvt. Ltd.

Premier ATC - Parker-SSD (USA)

E-192, Ph-8 B, Indl. Area, S.A.S. Nagar, Mohali, Punjab, India
Cell : 0091 9814012597, 9216612597, 9216444597

E-MAIL : ks@wondersystemsindia.com,

f : <https://www.facebook.com/wondersystemsindiapvtltd>

s : kulwinder.wondersystems