



# EMVO SINGLE STAGE OIL SEALED ROTARY VANE VACUUM PUMPS

## SUPERVANE (ROTARY VANE+BOOSTER COMBINATION VACUUM SYSTEMS)



# EMVO SINGLE STAGE OIL SEAL ROTARY VANE VACUUM PUMPS



Rotary Vane Vacuum Pumps



Mechanical Vacuum Boosters



SuperVane (Booster+Vacuum Pump) Combination Systems

## Everest - The Partner Of Choice

*Everest, Leaders in vacuum technology offer RotaryVane Vacuum Pumps and systems developed using diverse design and cross link to suit individual process requirement and as import substitute.*

Everest, Leaders in vacuum technology offer RotaryVane Vacuum Pumps and systems developed using diverse design and cross link to suit individual process requirement and as import substitute.

### **Robustness and reliability of operation**

are the outstanding properties of the EMVO rotary vane vacuum pumps. The models EMVO 030 - 630 series has been specially developed for applications in the rough vacuum sector. Thanks to the particularly high separating performance, these vacuum pumps guarantee oil-free exhaust under even the most difficult operating conditions.

### **Operationally reliable and cost-effective**

The rotary vane technology by Everest has been continuously developed and optimised by Everest over the years, with constant focus on both economy and reliability of operation. High efficiency and energy-efficient drive units are the positive results of this development.

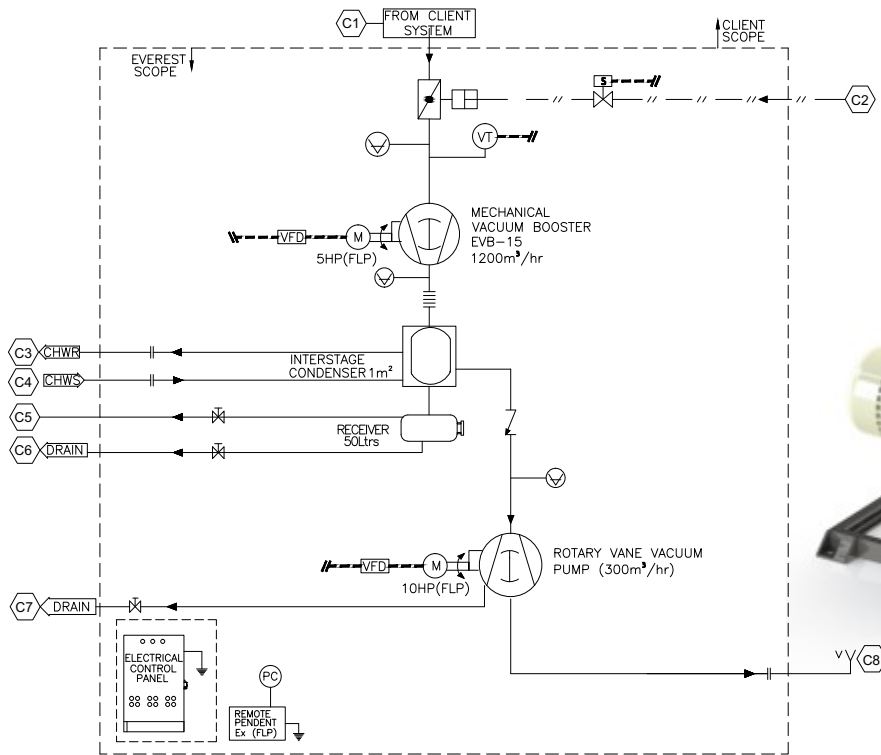
### **Application-oriented**

The EMVO vacuum pumps are distinguished by high pumping speed even in low pressure ranges and therefore quick pump-down times. The heavy-duty vanes guarantee long operating times. This series has been specially developed for applications with varying operating vacuums and can be reliably used both in continuous operation at ultimate pressure and also in low vacuum ranges. The optimised internal oil separation guarantees clean exhaust in all operating conditions.

### **Easy to service**

Maintenance can easily be carried out by the operator. Apart from the change of oil and filters at regular service intervals, no further maintenance is necessary. EMVO rotary vane vacuum pumps are known throughout the industry for modern and energy-efficient vacuum generation suitable for all kinds of applications – whether being used intermittently or around the clock, you can rely on Everest. EMVO Series are especially suited for certain applications such as pumping of very wet gases, vapours and explosive gases.

# SUPERVANE (ROTARY VANE + VACUUM BOOSTER) COMBI VACUUM SYSTEMS



ROTARY VANE PUMP

## SPECIFICATIONS | EVEREST SUPERVANE ROTARY PUMPS EMVO SERIES

Model	Inlet Displacement Speed (m <sup>3</sup> /hr)	Ultimate Vacuum (Torr)	Power Consumption (KW)	No. of Stages
SuperVane 400	400	0.05	5.9	2 Stage
SuperVane 800	800	0.05	9.2	2 Stage
SuperVane 1670	1670	0.05	13	2 Stage
SuperVane 2000	2000	0.05	16.5	2 Stage
SuperVane 3000	3000	0.0075	18.7	3 Stage
SuperVane 4000	4000	0.0075	24	3 Stage
SuperVane 5000	5000	0.0075	27.5	3 Stage

- Power consumption & Specification may vary without any prior notice.
- Individually customized systems can be manufactured depending upon process requirements.
- Filters & Condensers unit's along receivers + Automation is also supplied by Everest, when complete vacuum systems is procured.

### APPLICATIONS

Vacuum Drying | Solvent Recovery | Vacuum Distillation | Vacuum Degassing | Vacuum Impregnation | Space Research and Development Applications

### EVEREST ADVANTAGE

Everest has the skill, experience and capability to custom design vacuum systems for specific requirements and deliver guaranteed results

# EMVO SERIES ROTARY VANE PUMPS



**Most  
Robust  
Pumps Made  
Specially  
For Indian  
Environment**

## SPECIFICATIONS | EVEREST SUPERVANE ROTARY PUMPS EMVO SERIES

MODEL		EMVO-6	EMVO-8	EMVO-10	EMVO-16	EMVO-20	EMVO-30	EMVO-40	EMVO-63	EMVO-100
<b>Nominal Displacement</b>	(m <sup>3</sup> /hr)	6	8	10	16	20	30	40	63	100
	50 Hz	6	8	10	16	20	30	40	63	100
<b>Ultimate pressure</b>	mbar	2	0.5	0.5	2	2	0.5	0.5	0.5	0.5
	Torr	1.5	0.37	0.37	1.5	1.5	0.37	0.37	0.37	0.37
<b>Motor Rating</b>	(KW)	0.35	0.37	0.55	0.55	0.95	2	2	2.55	3.45
<b>Operating Speed</b>	(RPM)	-	1430	1420	3000	2850	1420	1420	1420	1420
<b>Sound Level</b>	(dB) (A)	50	59	58	60	61	64	67	68	70
<b>Operating Temp</b>	°C	40	40	40	40	40	40	40	40	40
<b>Water Vapour Tolerance (max)</b>	mbar	-	-	-	-	-	40	40	40	40
<b>Water Vapour Capacity</b>	L/h	-	-	-	-	-	0.9	0.9	1.8	2.8
<b>Oil Filling</b>	(Ltr)	0.3	0.3	0.4	0.3	0.4	1	1	2	2
<b>Approx Weight</b>	(kg)	12	18	20	18	20	34	38	64	75
<b>Dimensions</b>	(LXWXH)	-	303 X160 X234	410 X231 X161	303 X160 X234	410 X231 X161	620 X290 X264	620 X290 X264	672 X410 X298	672 X410 X298
<b>Port Size</b>	Suction (NB)	6.25	12.5	12.5	12.5	12.5	31.25	31.25	40	40
	Discharge (NB)	6.25	12.5	12.5	12.5	12.5	31.25	31.25	31.25	31.25

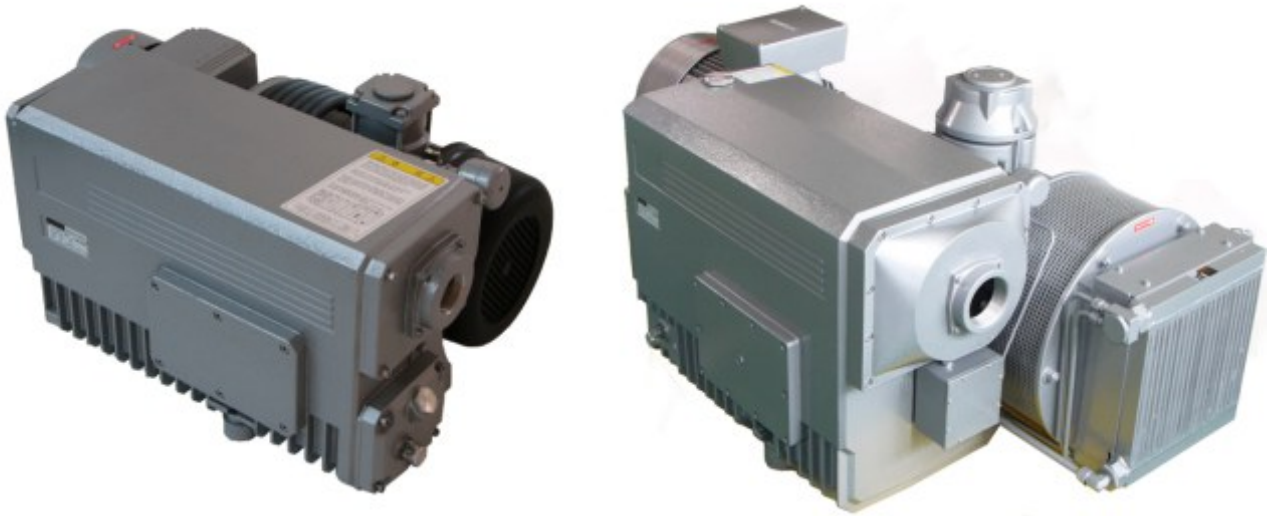
- Power consumption & Specification may vary without any prior notice.
- Individually customized systems can be manufactured depending upon process requirements.

ENGINEERING | EVALUATION | DESIGNING | MANUFACTURING | TESTING | EXECUTION | POST SALES AND SERVICE

# EMVO SERIES ROTARY VANE PUMPS



ROTARY VANE PUMP



## SPECIFICATIONS | EVEREST SUPERVANE ROTARY PUMPS EMVO SERIES

MODEL		EMVO-160	EMVO-200	EMVO-250	EMVO-300	EMVO-400	EMVO-630
<b>Nominal Displacement</b>	(m <sup>3</sup> /hr)	50 Hz 160	200	250	300	400	630
		60 Hz 190	240	300	360	480	760
<b>Ultimate pressure</b>	mbar	0.5	0.5	0.5	0.5	0.5	0.5
	Torr	0.37	0.37	0.37	0.37	0.37	0.37
<b>Motor Rating</b>	(KW)	50 Hz 5.5	5.5	7.5	7.5	11	15
		60 Hz -	-	-	-	15	18.5
<b>Operating Speed</b>	(RPM)	50 Hz 1455	1455	1455	1455	1000	1000
		60 Hz 1755	1755	1755	1755	1200	1200
<b>Sound Level</b>	(dB) (A)	50 Hz 70	72	72	74	70	72
		60 Hz 72	74	74	76	72	74
<b>Operating Temp</b>	°C	80	80	85	85	40	40
<b>Water Vapour Tolerance (max)</b>	mbar	40	40	40	40	40	40
<b>Water Vapour Capacity</b>	L/h	7.6	9.6	12	14	19	30
<b>Oil Filling</b>	(Ltr)	7	7	7	7	13	15
<b>Approx Weight</b>	(kg)	174	185	202	218	550	670
<b>Dimintions</b>	(LXWXH)	916 X 570 X429	916X570 X429	1030 X 570 X 429	1178 X 605 X 490	1546 X 832 X 668	1724 X 832 X 668
<b>Port Size</b>	Suction (NB)	50	50	50	50	75	75
	Discharge (NB)	50	50	50	50	75	75

- Specification are subject to change without prior notice.
- For standard version with Gas Ballast Valve open - All units achieve ultimate vacuum of 0.5 mbar.
- Pumps in both orientations of FLP & Non FLP type motor are available.

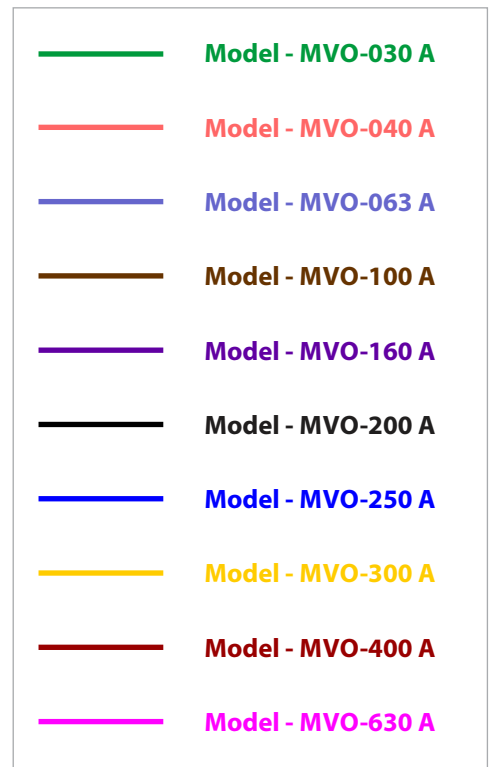
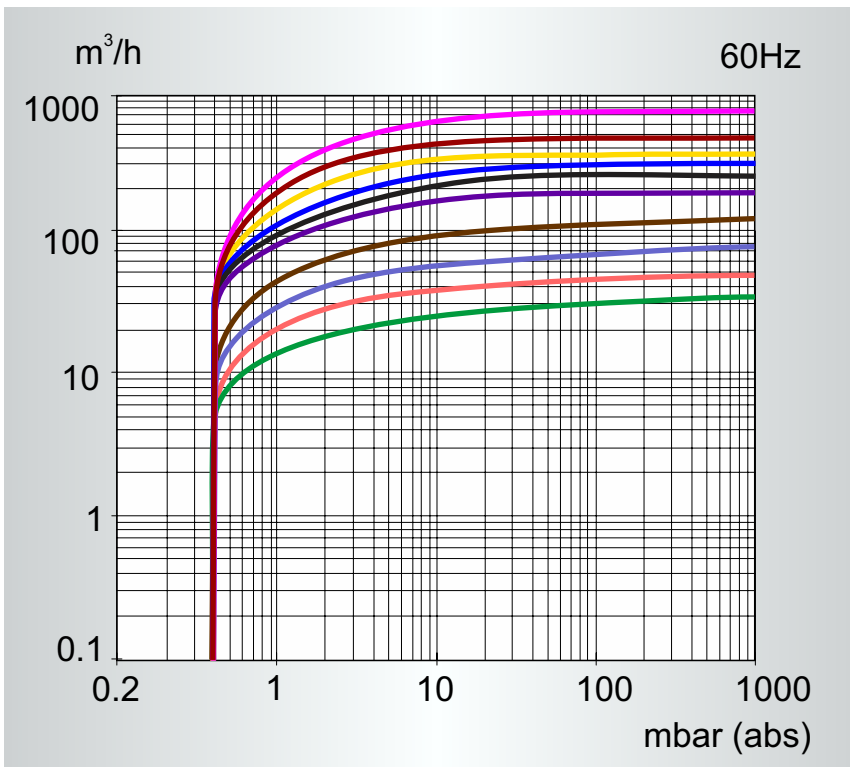
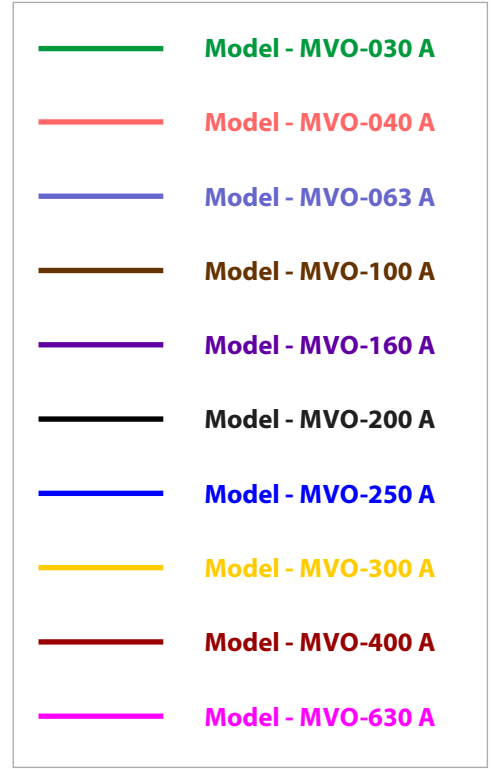
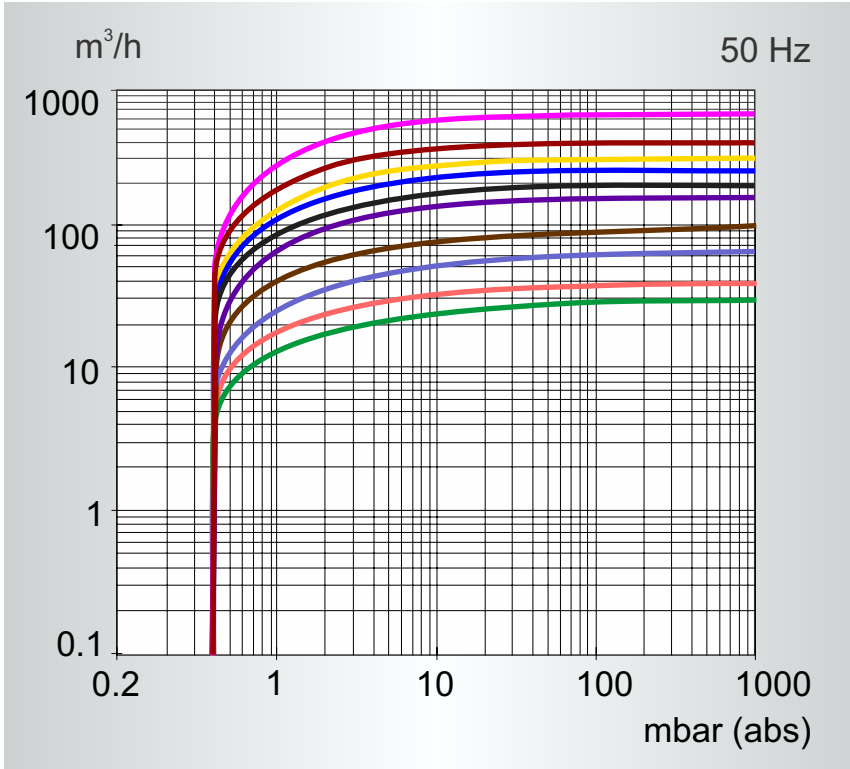
## SCOPE OF SUPPLY

- Oil Separator
- Gas Ballast
- Electric Motor
- NRV
- Fill of Oil - Shipped Separately

# EMVO SERIES ROTARY VANE PUMPS (PERFORMANCE CURVE)



## PERFORMANCE CURVES 50 Hz & 60 Hz





ROTARY VANE PUMP

## ADDITIONAL SPARES & ACCESSORIES

▶ **Vacuum Line Filter**  
 Everest compact in-line vacuum filters to vacuum lines or air-supply lines to trap dirt and debris from entering the process, or to the exhaust port to capture airborne contaminants. Everest pleated-element design offers a filter with significantly longer life.



▶ **Vacuum Regulator**  
 The other type of regulator works by throttling flow between the vacuum pump and the process in order to control the process vacuum. This type, which will be referred to as a Vacuum Regulator, is actually a Back Pressure Regulator because the pressure controlled is on the inlet port.



▶ **Silencer**  
 This Filter is used on the exhaust of the Rotary Vane High Volume Pump and acts as both a filter and a silencer.



▶ **Vacuum Switch**  
 Rely on Everest pressure switches and vacuum switches to perform in critical applications that experience performance spikes and other extreme conditions. These switches sense a change in the pressure or vacuum and open or close an electrical circuit when the designated set point is reached.



We don't just offer **Blowers, Boosters and Systems** we offer **SOLUTIONS !!**



ROTARY VANE PUMP

## A MULTITUDE OF APPLICATIONS

EMVO oil-sealed rotary vane vacuum pumps are perfect for a range of demanding applications:

- **Chemical & Pharmaceutical:** Distillation, Drying & Conveying applications.
- **Packaging:**
  - Food processing: general packaging, cheese processing, vacuum cooling of produce.
  - Meat packing: fresh and cooked meats, poultry, modified atmosphere packaging, tumbling, filling and sealing.
- **Woodworking:** CNC cutting and routing, loading and unloading systems.
- **Rubber and plastics:** Thermoforming applications, extruder barrel degassing, mold degassing, material handling.
- **R&D Systems:** central laboratory vacuum.
- **Electronics:** pick and place components, PCB manufacture, central vacuum systems.
- **Material Handling:** vacuum lifting, pick and place, bulk material transfer, pneumatic conveying, bottling, canning, vacuum sewage.
- **Paper and Printing:** Presses (sheet fed, offset, etc.), bindery equipment including stitching lines and perfect binding, newspaper production, envelope machines.
- **Medical Vacuum:** Various evacuation duties.
- **Environmental:** Ground remediation etc.

A humid version is available which is suitable for high water content duties, for applications such as plastics, clay molding, drying pipelines, salad cooling, freeze drying etc. If your application is not listed or you are considering whether your application will produce the benefits often associated with centralizing your vacuum supply, please contact your local Everest Group representative to discuss the suitability of the EMVO range of vacuum pumps for your specific application.



Corporate Office  
 B-44, Mayapuri Industrial Area, Phase 1, New Delhi 110 064, India  
 Tf: +91 11 4545 7777 | E: vacuum@everestblowers.com  
 Group Companies

Everest Blowers Pvt. Ltd. - Everest Transmission - Everest Blower Systems Pvt. Ltd.





[www.everestblowers.com](http://www.everestblowers.com)