

technical & physical specifications

(Vpremium & Vplank are manufactured as per IS 14862 : 2000 Type "A" category 3 / ASTM C 1186 Type "A" grade II standards)

S.No.	Property	Test Method	Unit	Requirement	Test Results
Physical Characteristics					
1.	Dimensional Tolerances:				
a.	Length & Width	ASTM C1185/		+ 0.5%	Pass
b.	Thickness	IS14862 /		+ 10%	Pass
c.	Straightness & Squareness	ISO 8336		3mm/m & 4mm/m	Pass
2.	Density	ASTM C1185	Kg /m3	>1250	1298
3.	Flexural Strength (MOR – Wet Condition)	ASTM C1185	N/mm2	> 7.0	9.1
4.	Water Impermeability	ASTM C1185		No water droplets at the underside	Pass
5.	Moisture Movement	ASTM C1185	%		0.061
6.	Water Absorption	ASTM C1185	%	30-36	30.64
7.	Moisture Content	ASTM C1185	%	4-8	4
8.	Water Vapour Transmission	ISO 12572	g/m2. Perday		40.6
	Water Vapour Resistance Factor (μ)				117
9.	Glue-Line Shear Force/Strength	ASTM D1037	N		3264.2
10.	Direct Screw Withdrawal Resistance	ASTM D1037	N		989.7, 643.3
Durability					
11.	Freeze-Thaw resistance (50 cycles)	ASTM C 1185			Pass
12.	Warm water resistance	ASTM C1185			Pass
13.	Soak-Dry resistance (50 cycles)	ISO 8336			Pass
14.	Heat-Rain resistance (25 cycles)	ASTM C1185			Pass
FIRE					
15.	Ignitability	BS 476, Part 5		Class P - not easily Ignitable	Class P
16.	Fire Propagation Index	BS 476, Part 6		Lower Values are better	2.79
17.	Surface Spread of Flame	BS 476, Part 7			Class 1
18.	Fire Resistance – Integrity & Insulation (in minutes for Non-load bearing, Insulated double-skin partition)	BS 476, Part 22	Both in minutes	>120	171 & 148
19.	Surface Burning Characteristics :	ASTM E84		Lower Values are better	
a.	Flame Spread Index				0
b.	Smoke Developed Index				0
c.	Class				A
Acoustic Characteristics					
20.	Sound Transmission Coefficient (STC) :	DIN 52210 /			
a.	Bare Board (8mm thick)	ISO 140	dB		29
b.	Typical Partition (with 10mm facing sheets, 72mm stud, 50mm glass wool 48kg/m3)		dB		45
Thermal Characteristics					
21.	Thermal Conductivity	ASTM C518	W/m ² K Kcal/mh ² K		0.0748 0.0643

Visaka Industries Ltd. was promoted by Dr. G. Vivekanand in 1981 to manufacture Fiber Cement Roofing Sheets.

Today, the company has manufacturing plants across the country with a turnover of ₹925 crores, making it the second largest cement sheet manufacturer in India. The non-asbestos cement board & panel division was established in the year 2008. The company boasts of a massive portfolio with 8 Fiber Cement Roofing Sheet plants having manufacturing capacities of 8,30,000 MT per annum, 2 Vboard plants having manufacturing capacities of 1,20,000 MT per annum, a Vpanel plant having manufacturing capacity of 3,00,000 Sq.m., and a Textile Yarn plant. With a focused vision of revolutionizing modern construction as we know it, the company manufactures the highest quality products that are exported around the world.



visaka
industries limited

Corporate Office :
Visaka Towers, 1-8-303/69/3,
S.P. Road, Secunderabad,
Andhra Pradesh, India - 500003
Tel: +91-040-2781 3833, 2781 3835.

Export email : export.vboard@visaka.in
Domestic email : domestic.vboard@visaka.in
Web: www.constructionnext.in

Factory 1
Gajalapuram Village,
Nalgonda District,
Andhra Pradesh, India.

Factory 2
Visaka Industries Limited
Gate no. 262 to 269
Delwadi Village, Daund taluq,
Pune, Maharashtra, India.



not wood....
much good

Vpremium
Vplank

contact@pad.net.in | 12/13

Vpremium Vplank

salient features



Vpremium Vplank - strong as cement. better than wood.

Fiber cement boards have taken the international market by storm. The strong portfolio of advantages make the product widely endorsed and appreciated by architects and customers worldwide; many of them are replacing plywood with fiber cement boards. Fiber cement boards have been used in some of the iconic buildings of our time as they save time, money and being aesthetically more beautiful in their appeal.

Multiple uses of **Vpremium** & **Vplank** has taken fiber cement board utilities to the next level for use in interior as well as exterior applications.

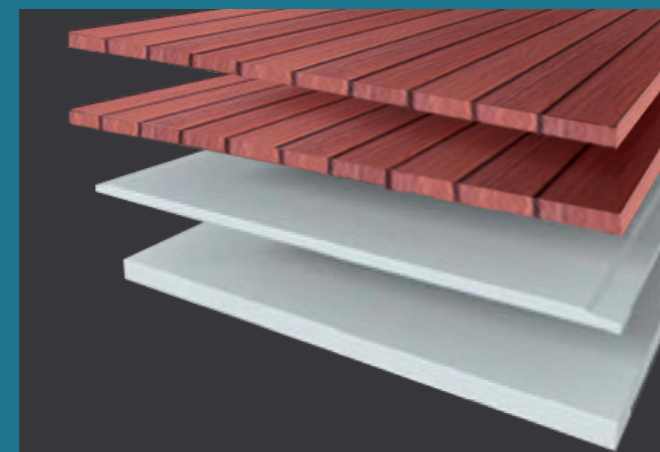
manufacturing

Vpremium & **Vplank** is a Non Asbestos, autoclaved product. These fiber cement boards are manufactured by the Hatschek process; later the product is cured using HPSC technology. The curing is done under high pressure steam to attain the product's strength and stability. **Vpremium** & **Vplank** is composed of a composite matrix containing special grade cellulose fibers, ordinary Portland cement, fine silica, quartz, and some mineral additives.

Vpremium & **Vplank** is manufactured as per ISO 8336/IS 14862/ASTM C 1186 standards. They are available in standard dimensions with smooth and textured finishes to meet the requirements of modern external building applications.

aesthetics

A beautiful home is an essential requirement and desire of any individual. **Vpremium** & **Vplank** can be craftfully used to decorate the home as per the taste and choice of the owner as it has innovative and multiple applications. The high aesthetic appeal of decorated **Vpremium** & **Vplank** can replace other products like ACP, Wood siding etc.



the Vpremium & Vplank advantage

- ✓ Asbestos free
- ✓ Energy efficient
- ✓ Termite resistant
- ✓ Weather resistant
- ✓ Low shrinkage
- ✓ Easy workability
- ✓ Low operational cost
- ✓ Sound insulation
- ✓ Aesthetics with durability
- ✓ Eco-Friendly
- ✓ Value for money
- ✓ Water resistant

Vpremium applications

Vpremium is a flexible and aesthetically appealing product suitable for the following applications :

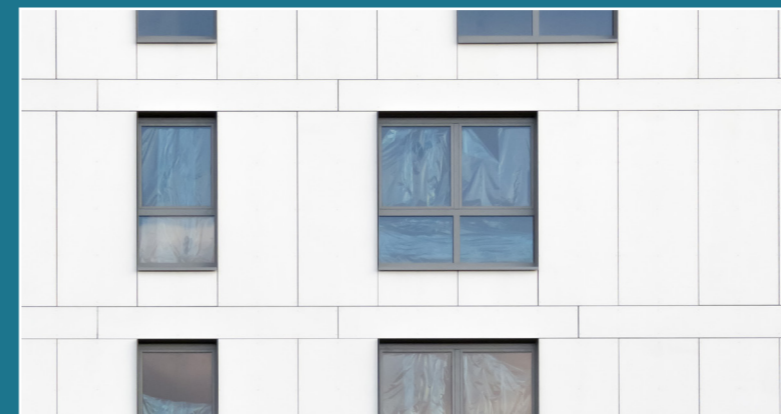


duct covering

Sewage pipes and air conditioning services can be covered using our 8mm **Vpremium** boards with appropriate members to conceal these services in order to make the building more aesthetically appealing.

external cladding

The weather resistant property of **Vpremium** when used with suitable protective and decorative finishes, makes it a suitable choice for applications like facades and external cladding.



wet areas

Vpremium is resistant to damage from water. This property makes **Vpremium** a smart choice for interiors in areas that are prone to constant contact with moisture. V-Tile as a backer board provides a suitable base for laying ceramic tiles in wet areas.

roof underlay

Our 12mm **Vpremium** board is popularly used as an underlay roofing application as a replacement for RCC slabs. The board is fixed using a self-drilling screw and the roof is finished using clay tiles or shingles, like Saint Gobain.



Vplank applications

Vplank is a flexible and aesthetically appealing product suitable for the following applications :

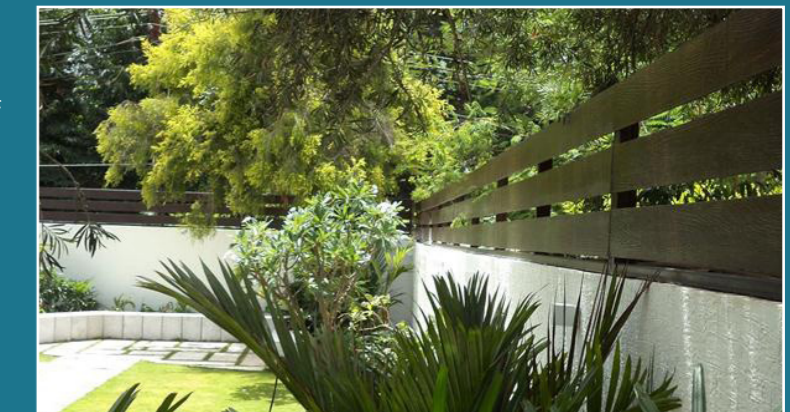


external cladding

Vplank is fiber cement board siding manufactured as per IS 14862:2000 Type "A" category 3/ASTM C 1186 Type "A" grade II board used for external and internal cladding, soffit covering, duct covering and eaves lining.

garden fences

Vplank can be used to give an aesthetic and appealing look along with the strength of durability of cement for backyard and garden fences.



compound wall cladding

The boundary walls of residential complexes and enclosed residential spaces can be adorned with **Vplank** that is impervious to changing weather conditions.

cladding of gates

Vplank can also be used as an effective, yet attractive and long-term option for covering gates, both in residential and commercial applications.

